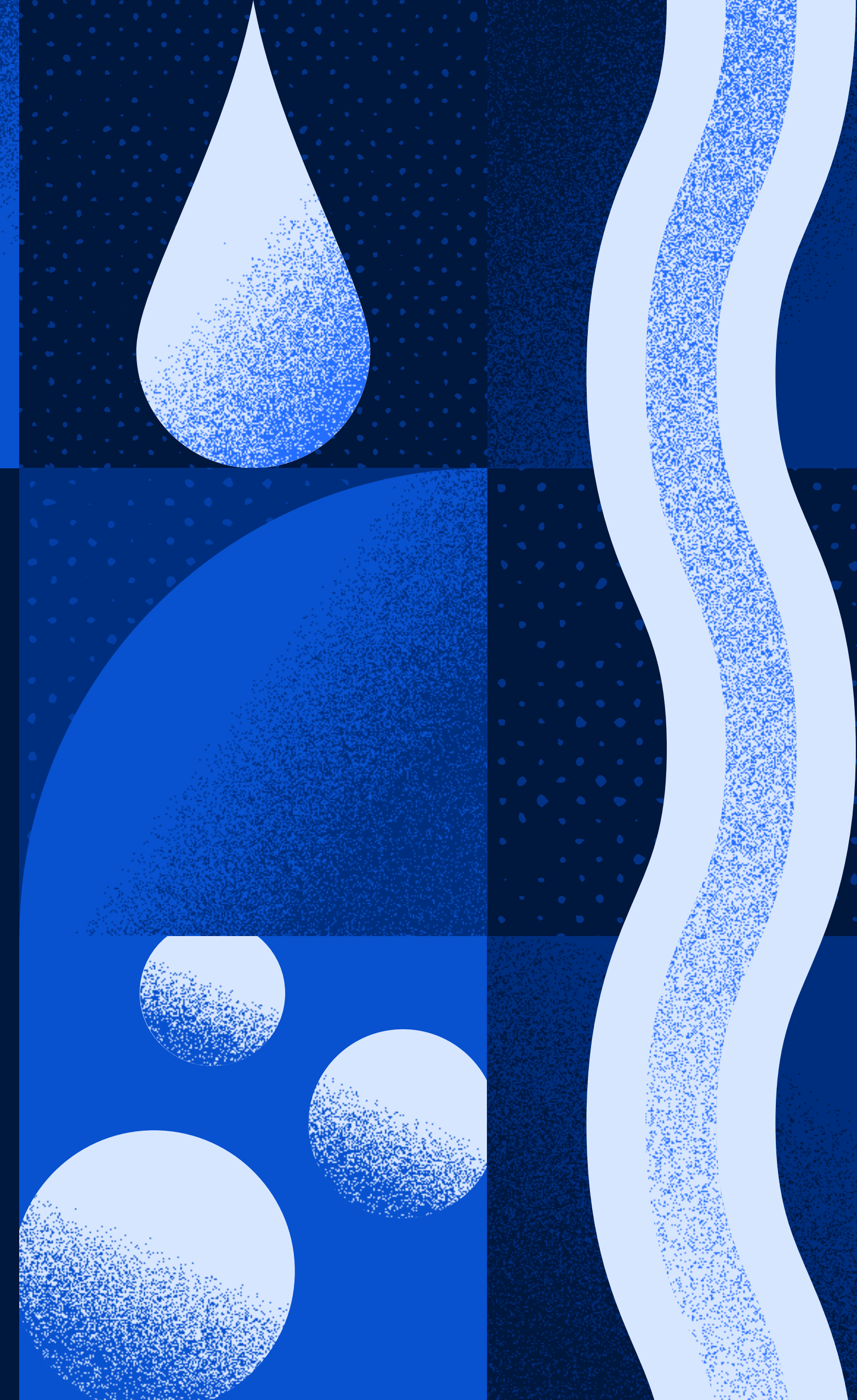
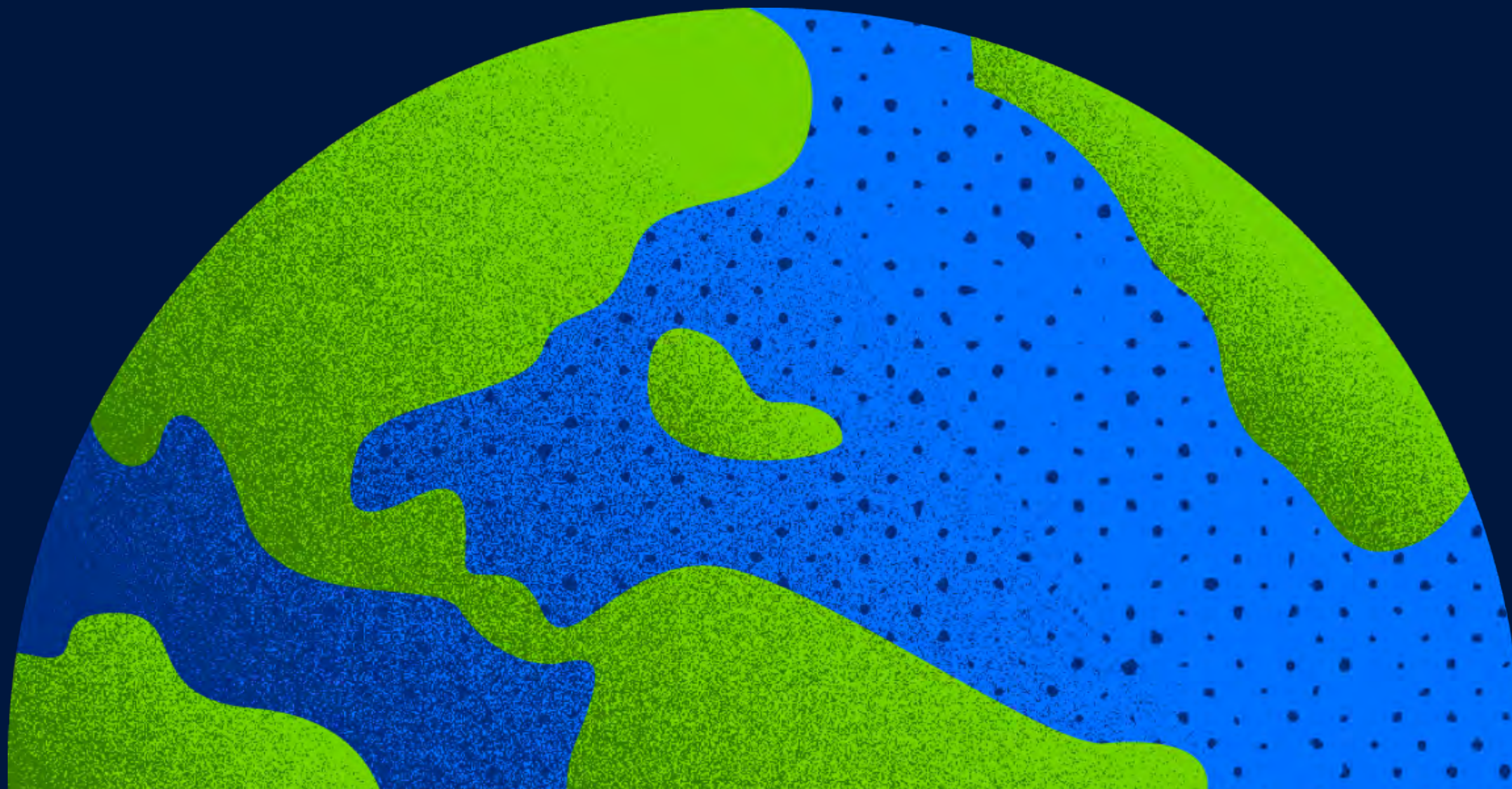


# Bevi's Environmental Impact Report

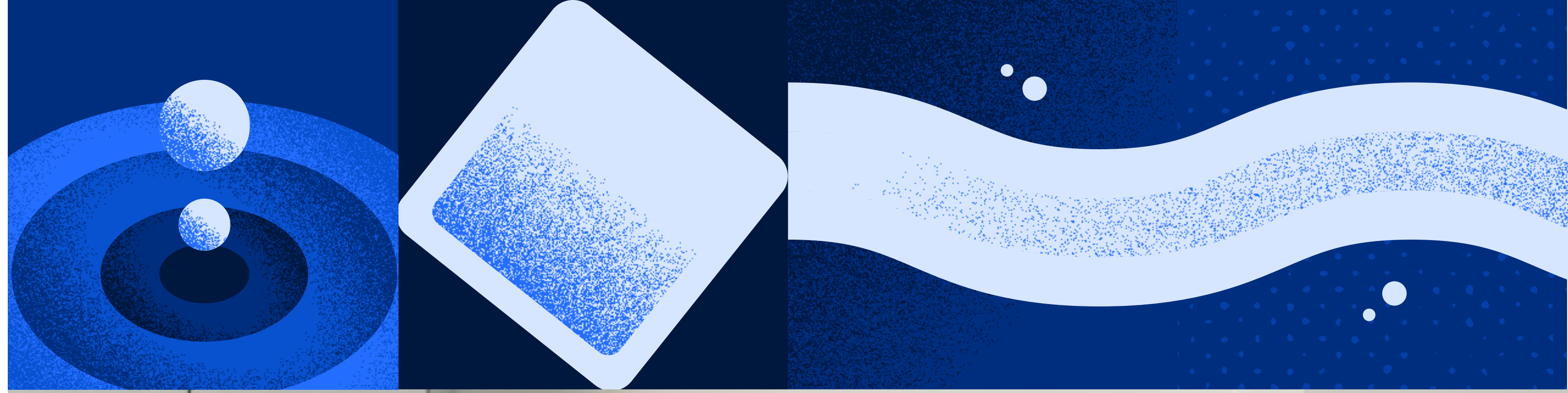


Keeping People and  
the Planet Refreshed

bevi<sup>®</sup>

# Table of Contents

- 2 Letter From the CEO:  
The Hydration Journey
- 4 Environmental Stewardship:  
The Bevi Product
- 19 Our People:  
The Bevi Culture
- 26 Operational Excellence:  
The Bevi Process
- 32 Conclusion: See How Bevi Fits  
With Your Net-Zero Goals

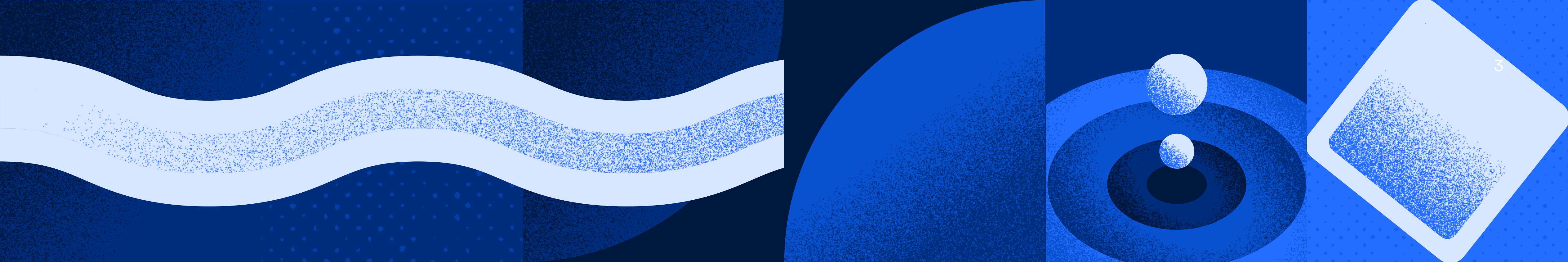




# Letter From the CEO: The Hydration Journey



Cathy Lewenberg  
CEO, Bevi



When I reflect on why I'm here at Bevi, it always comes back to a simple, personal conviction: I want to leave the world in a better place for my three children. Over a career spanning two decades leading both established brands and startups, I've seen many worthwhile causes, but none have felt as urgent as this.

We often think of *sustainability* as a series of massive, complex undertakings. But the truth is, the most material impacts we can make often come from the smallest daily shifts. Choosing how you hydrate and avoiding single serve bottles and cans is one of those shifts. It is quite possibly the easiest thing we can do to make a meaningful, positive impact on our planet.

Every drink poured from a Bevi machine represents one fewer single-use plastic bottle or can that needs to be produced, shipped, and ultimately discarded. That simple act multiplied across thousands of offices, schools, and gyms has allowed us to reach a monumental milestone:

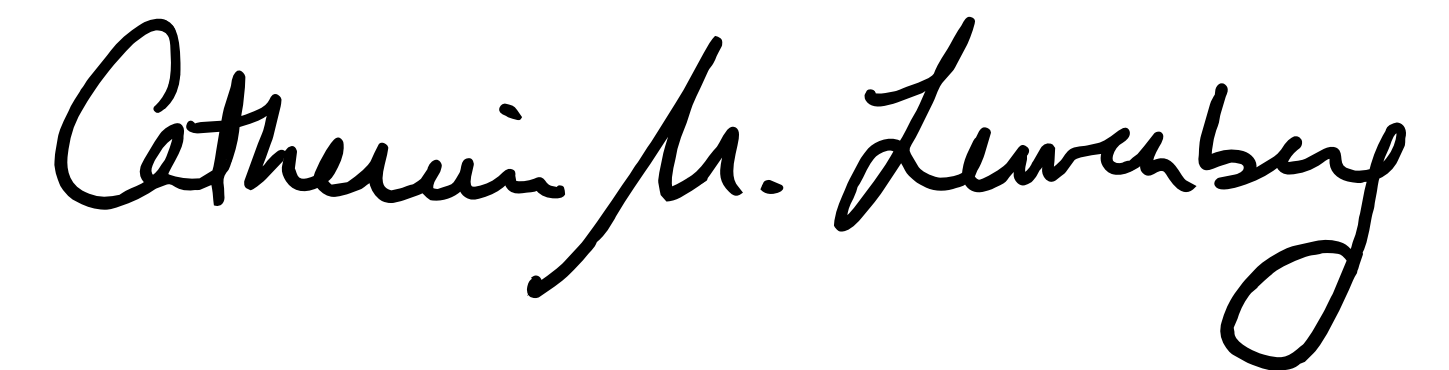
***As of late 2025, we have officially offset one billion single-use plastic bottles. That is one billion bottles not sitting in landfills and about 115,000 metric tonnes of carbon dioxide emissions avoided.***

Behind those big numbers is a daily effort tied to our core value: **get better every day**. We call this **Carbon Kaizen**, taking inspiration from the Kaizen methodology originating in Japan that refers to "continuous improvement." For us, this is a methodology of hunting for incremental, 1% gains in our carbon footprint and embedding them into our operations. Whether we're inventing portable water recyclers for our labs to limit waste or running our refurbishment program to maximize the life of every Bevi machine, we are always challenging ourselves to walk the walk.

This report is a look at that journey. It shows how we are scaling our impact and proving that doing what's right for the planet is also a smarter way to do business. As we expand our product offerings and diversify our beverages, our vision is to meet more of our drinkers' hydration needs throughout the day. We want to make the right choice, the most delicious and sustainable choice every time.

I am incredibly proud of what our team has accomplished, but I am even more inspired by the road ahead and the impact as we continue to scale. Every pour counts. Every small change adds up. Thank you for being part of this journey to a greener, healthier world.

Yours in sustainability,





# Environmental Stewardship: The Bevi Product

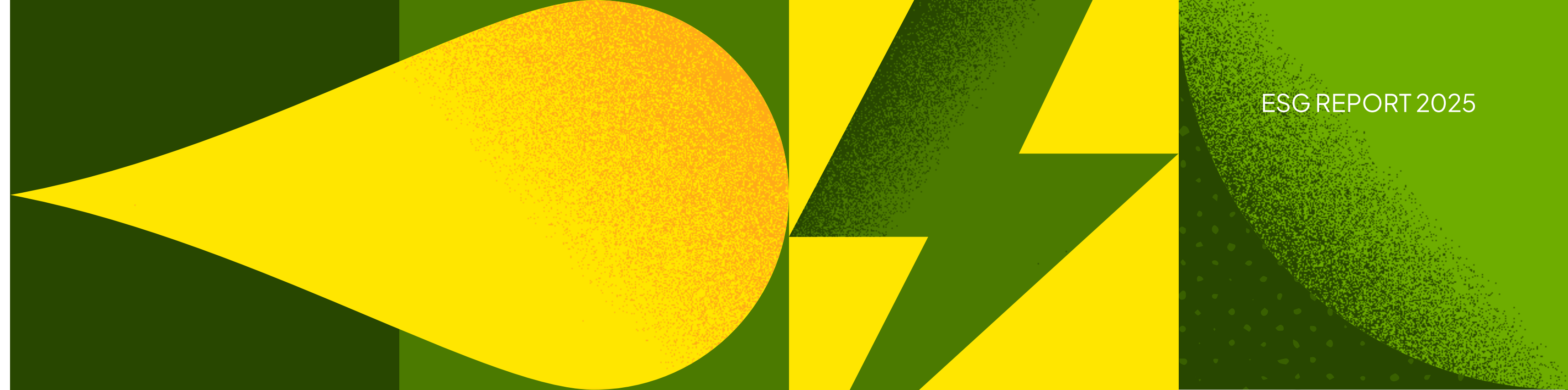
# Where We Started

Bevi was founded in 2013 after co-founder Eliza Becton decided to do something about the Great Pacific Garbage Patch, an accumulation of 1.8 trillion pieces of trash, mostly plastic, floating in the North Pacific Ocean.<sup>1</sup>

She was inspired to find an alternative to all of the plastic waste making its way into the ocean every year. In 2013, she teamed up with Sean Grundy and Frank Lee to create Bevi. Together, the team was focused on bringing together hardware, software, and design to solve a major part of this plastic pollution problem: single-use plastic bottles.

<sup>1</sup>The Ocean Cleanup. "The Great Pacific Garbage Patch."  
<https://theoceancleanup.com/great-pacific-garbage-patch/>

From left to right:  
Frank Lee, Eliza Becton,  
and Sean Grundy



# The State of Plastic Bottle Pollution

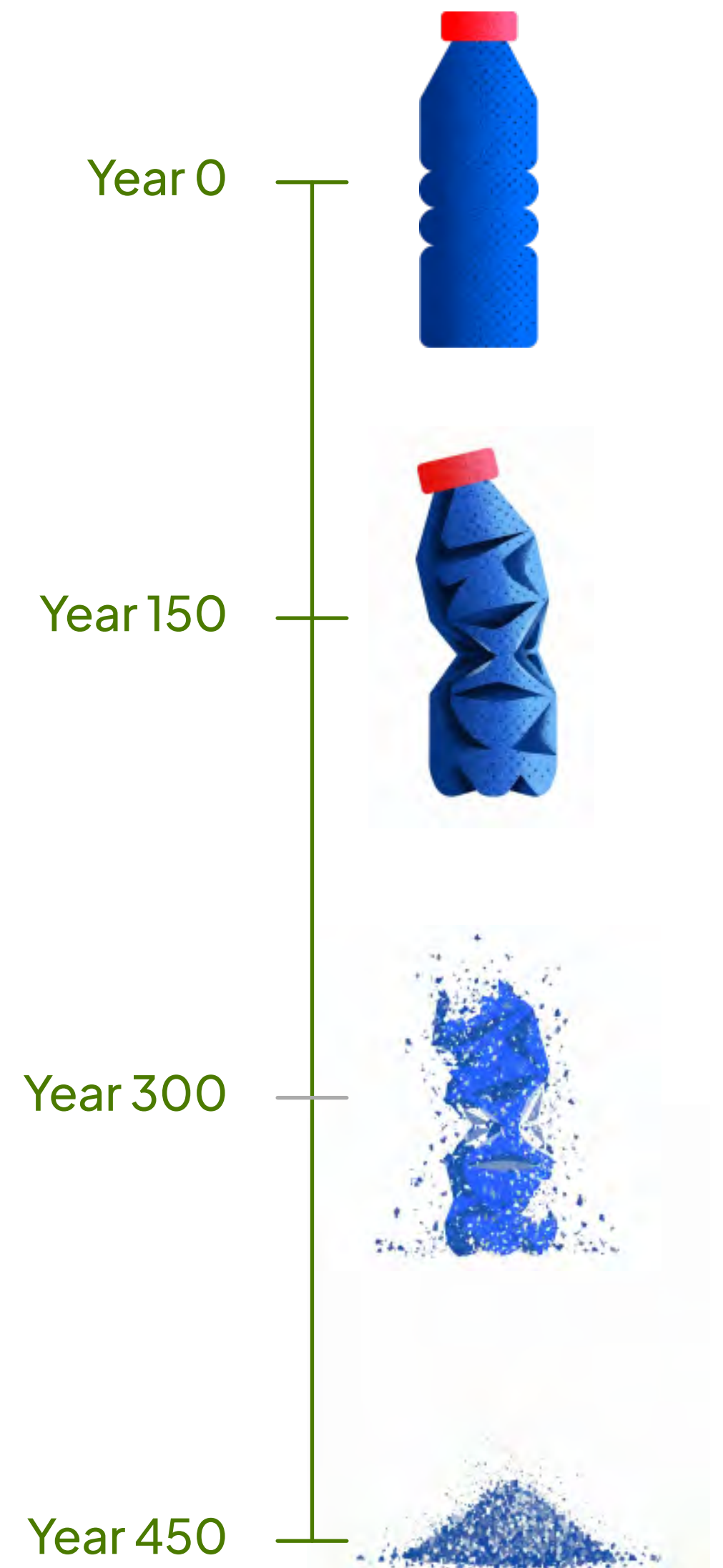
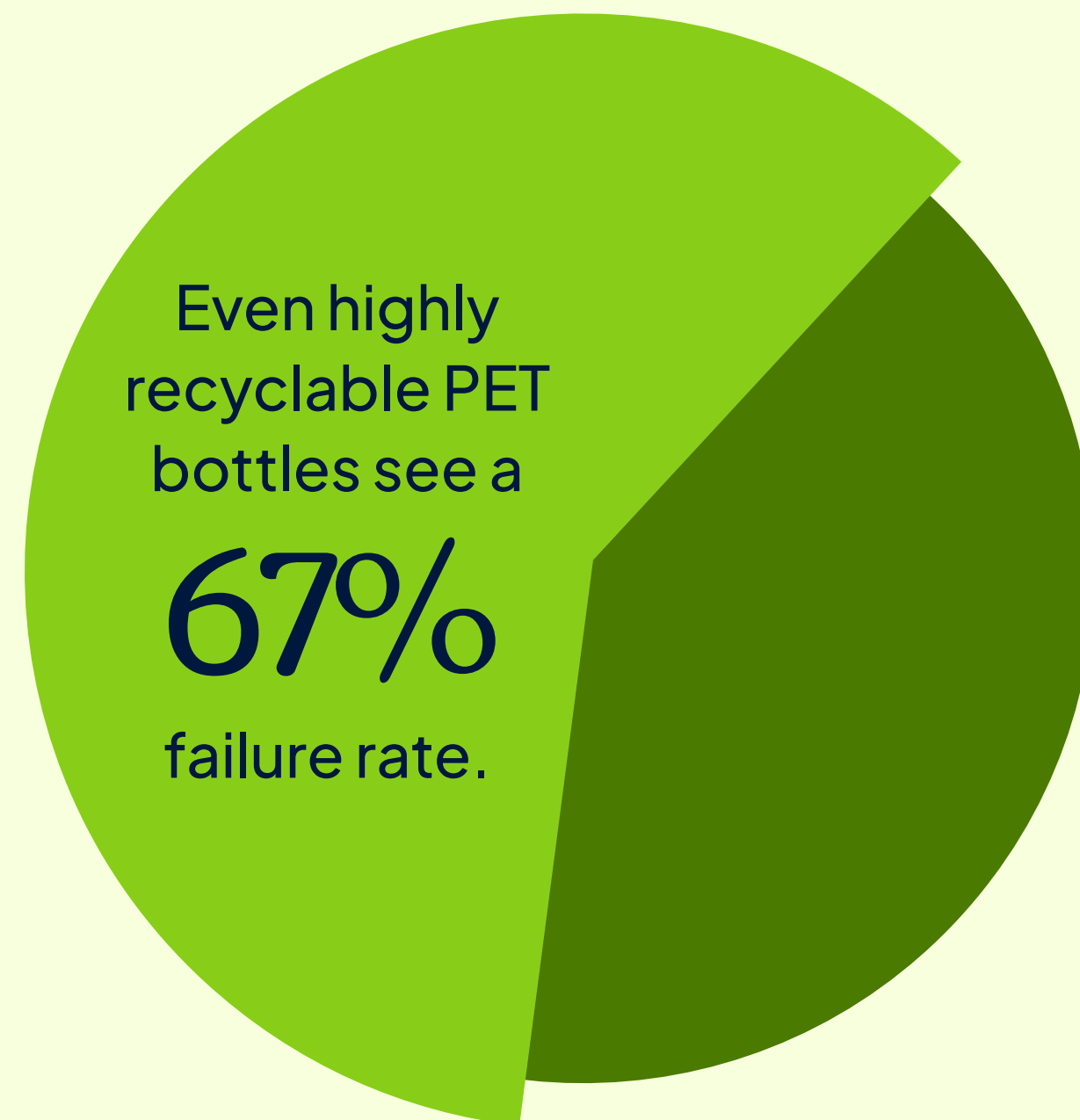
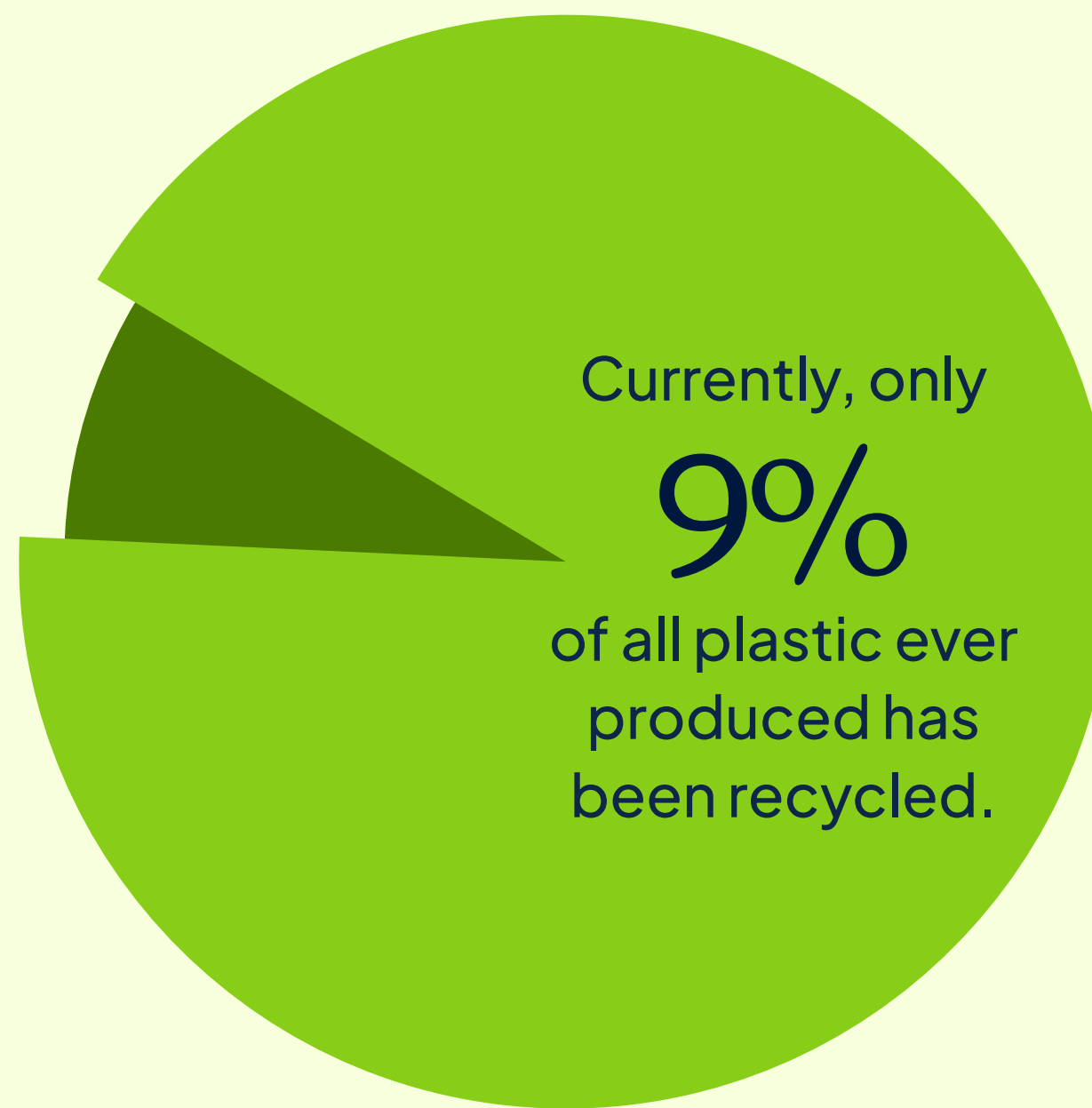
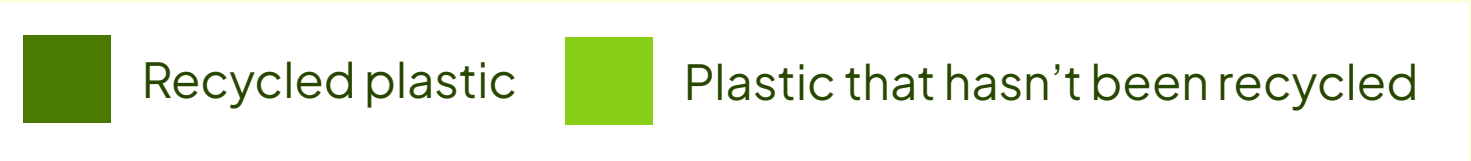
Every minute, another million plastic water bottles are sold globally. Most are used once and never recycled. Instead, they pile up in landfills, clog our oceans, and break down into microplastics that are now appearing inside the human body.

While major beverage brands pledge ambitious recycling goals, the system cannot scale fast enough to match production. Currently, only 9% of all plastic ever produced has been recycled.<sup>2</sup> Even highly recyclable PET bottles see a 67% failure rate, ending up in incinerators or—worse, like Eliza had realized—aquatic ecosystems, where single-use plastic bottles can take up to 450 years to degrade.<sup>3,4</sup>

<sup>2</sup> Science Advances. "Production, use, and fate of all plastic ever made." <https://www.science.org/doi/10.1126/sciadv.1700782>

<sup>3</sup> National Association for PET Container Resources. "PET Recycling Report." <https://napcor.com/reports-resources/>

<sup>4</sup> National Geographic. "The world's plastic pollution crisis, explained." <https://www.nationalgeographic.com/environment/article/plastic-pollution>



## CONTAMINATING THE SOURCE

We aren't just swimming in plastic; we're drinking it. Research shows

**93% of bottled water contains microplastics—often at double the levels found in tap water.<sup>5</sup>**

A liter plastic bottle can release 240,000 nanoplastics and microplastics into the water it holds especially when that bottle is exposed to heat or stress.<sup>6</sup>

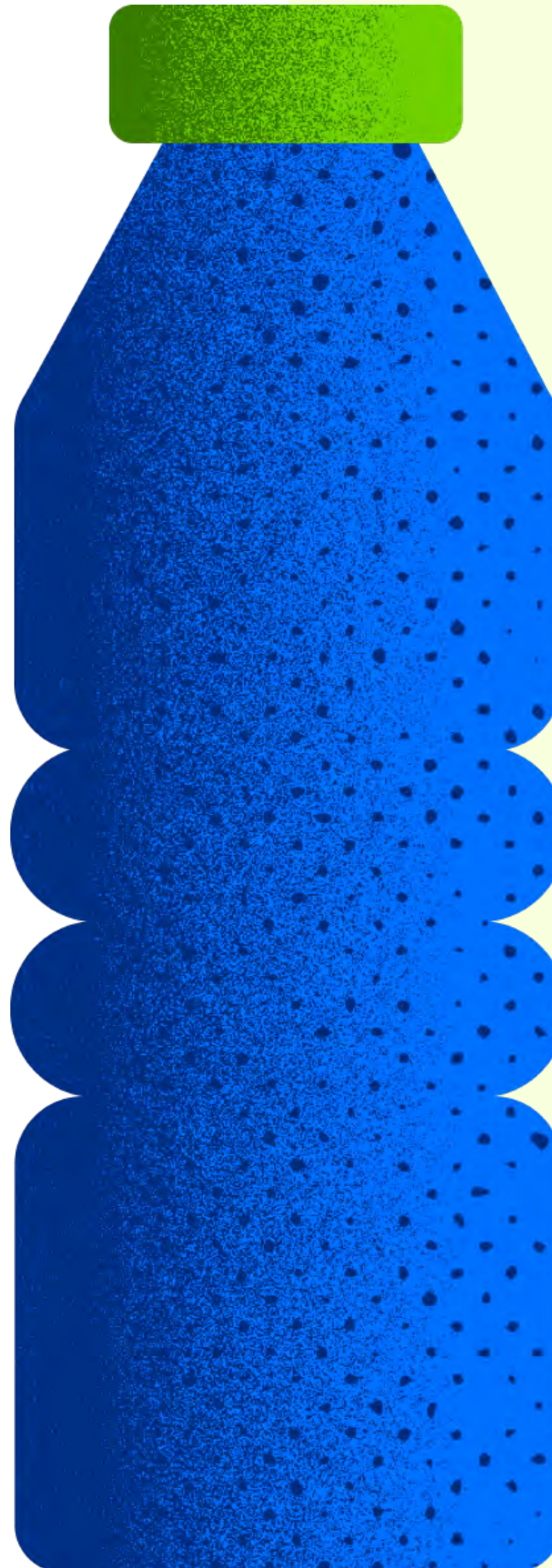
<sup>5</sup> PubMed Central. "Synthetic Polymer Contamination in Bottled Water." <https://www.ncbi.nlm.nih.gov/pmc/articles/PMC6141690/>

<sup>6</sup> Columbia Mailman School of Public Health. "Bottled Water Can Contain Hundreds of Thousands of Nanoplastics." <https://www.publichealth.columbia.edu/news/bottled-water-can-contain-hundreds-thousands-nanoplastics>

<sup>7</sup> Environ. Sci. Technol. 2019, 53, 12, 7068–7074. <https://pubs.acs.org/doi/10.1021/acs.est.9b01517>

<sup>8</sup> N Engl J Med 2024;390:900–10. <https://www.nejm.org/doi/pdf/10.1056/NEJMoa2309822?articleTools=true>

<sup>9</sup> PubMed Central. "Effect of microplastics deposition on human lung airways: A review with computational benefits and challenges." <https://pmc.ncbi.nlm.nih.gov/articles/PMC10826726/>



## MICROPLASTICS HAVE STAYING POWER

Adults consume up to 121,000 microplastic particles per year, not just from the beverages they're drinking, but also the food they're eating and the air they're breathing.<sup>7</sup> While the full extent of microplastic's impact on human health is still being studied, we are starting to see links between the presence of these toxic particles in our body with cardiovascular health issues and impaired lung function.<sup>8,9</sup>

## A BETTER WAY FORWARD

All of this waste is unnecessary. The future of hydration lies in eliminating the bottle entirely by filtering and enhancing the water already available at the tap. Bevi was founded to make this future a reality today. Our machines provide still, sparkling, flavored, and functional water without the need for single-use plastic. By using advanced filtration that removes 99.9% of microplastics with the use of our recommended carbon filter, Bevi empowers you to drink water as clean as it is sustainable.

# How We're Good for the Environment: Smart Water Cooler® Machines

Our countertop and standup beverage dispensers pour still, sparkling, flavored, and enhanced water on-demand.

Our Smart Water Coolers® offer sustainability benefits that go far beyond the bottle. Watch your contribution grow with a real-time counter of bottles saved, displayed on-screen as you fill up your cup.

## SAVING ENERGY & RESOURCES

Using water straight from the tap uses 2,000 times less energy than producing plastic bottles.<sup>10</sup>

## SAVINGS YOU CAN COUNT ON

Our machines have a sleep mode feature—Energy Saver Mode—to reduce power consumption during low usage periods. By improving and further optimizing this mode, we plan to continue decreasing lifetime emissions across the full fleet of machines.

## THE WELL

Track consumption trends and progress towards sustainability outcomes through The Well, Bevi's portal for all machine activity. Generate usage reports anytime to share with others in your organization.

## REAL-TIME BOTTLE COUNTER

Watch your contribution grow with a real-time Bottles Saved counter, displayed on-screen as you fill up your cup.

## RECYCLED MACHINE PARTS

Materials in the base of the machine are made from recycled plastic. We are always looking for new ways to ensure the Bevi machine parts do not add more plastic to the environment.

## PRIORITIZING REUSE

We refill and reuse our CO2 tanks, so you can enjoy a crisp serving of sparkling water with a clear conscience.

## FLAVOR PACKAGING

The cardboard boxes our flavor concentrates are packaged in are made from 47% renewable and recyclable corrugated fibers. The boxes themselves are also 100% recyclable.

<sup>10</sup> P H Gleick and H S Cooley 2009 Environ. Res. Lett. 4 014009. <https://iopscience.iop.org/article/10.1088/1748-9326/4/1/014009>

# What We've Accomplished: A Billion Bottles Saved

As of 2025, Bevi's Smart Water Cooler® machines have officially offset the need for one billion single-use plastic bottles.\*

That is one billion fewer bottles manufactured, transported, and discarded. Filling a reusable bottle might feel like a small, inconspicuous act, but when multiplied by hundreds of thousands of people, it changes the world. When you choose to hydrate happy with Bevi, you are a part of a positive impact rather than a wasteful action.

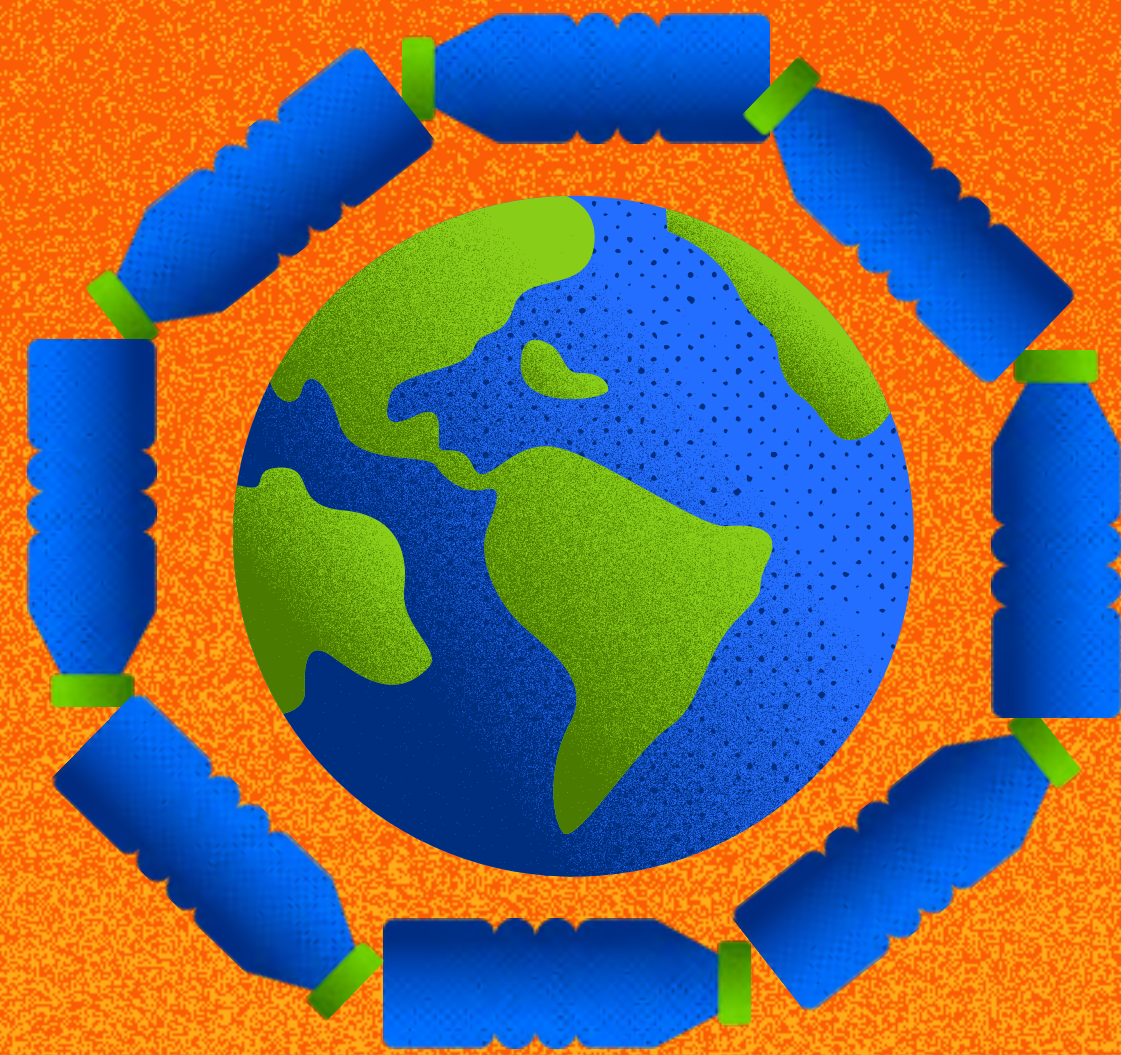
*\*Disclaimer: Based on 12-oz sized bottles*



1,000,000,000

# A Billion Bottles Saved to Scale, If Stacked End-to-End

Wraps  
around the  
Earth  
**5X**



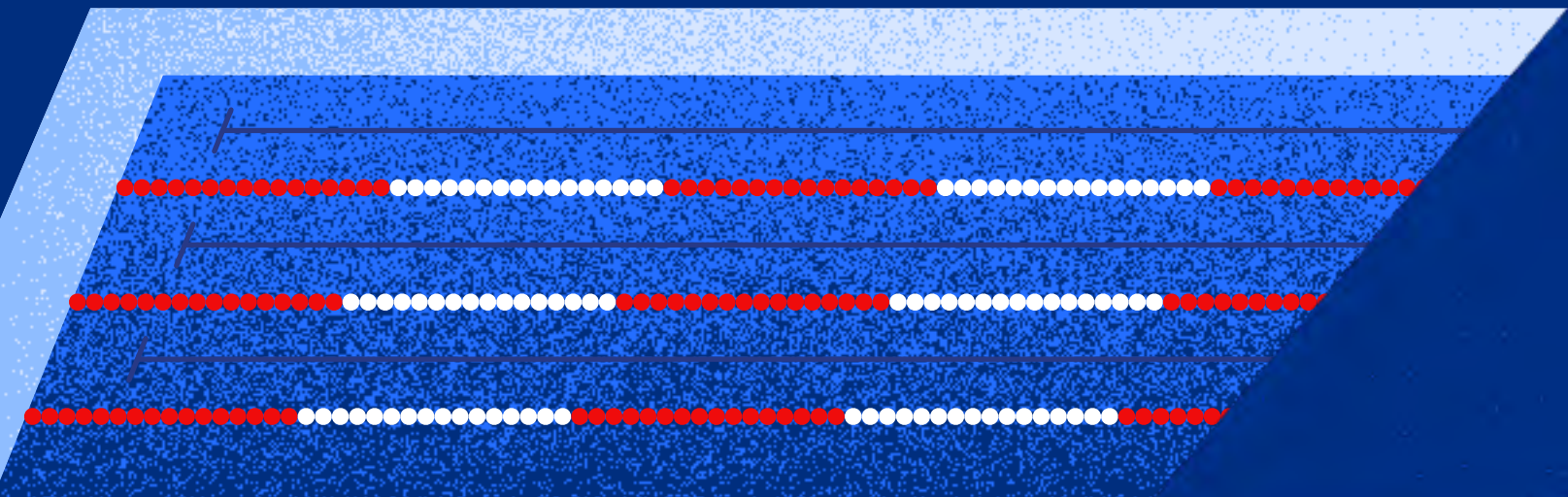
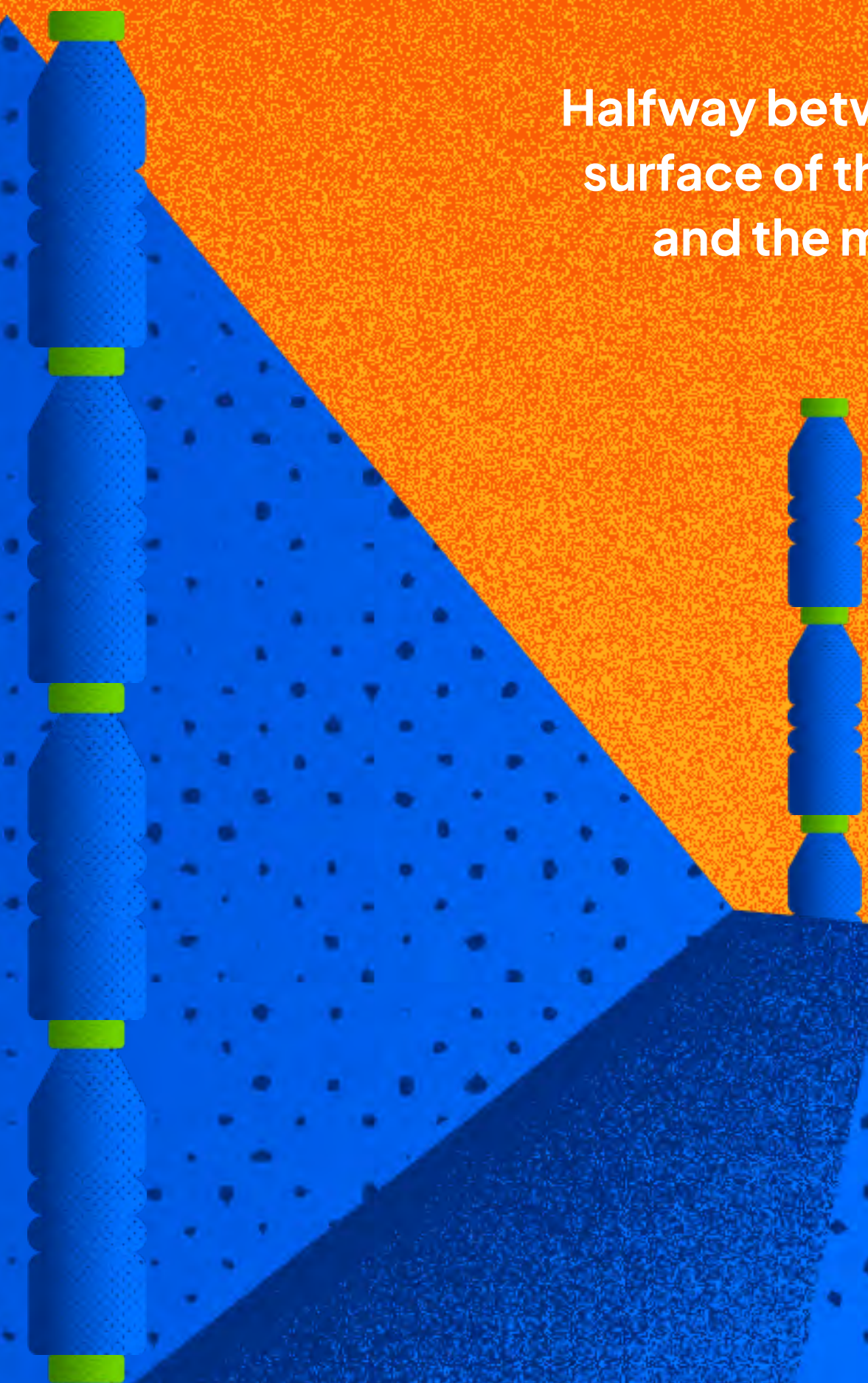
Halfway between the  
surface of the Earth  
and the moon

The volume of water from  
a billion bottles of water  
is equal, in volume, to

**200**

Olympic-sized  
swimming  
pools.

The height of  
**22,000**  
Mount Everests

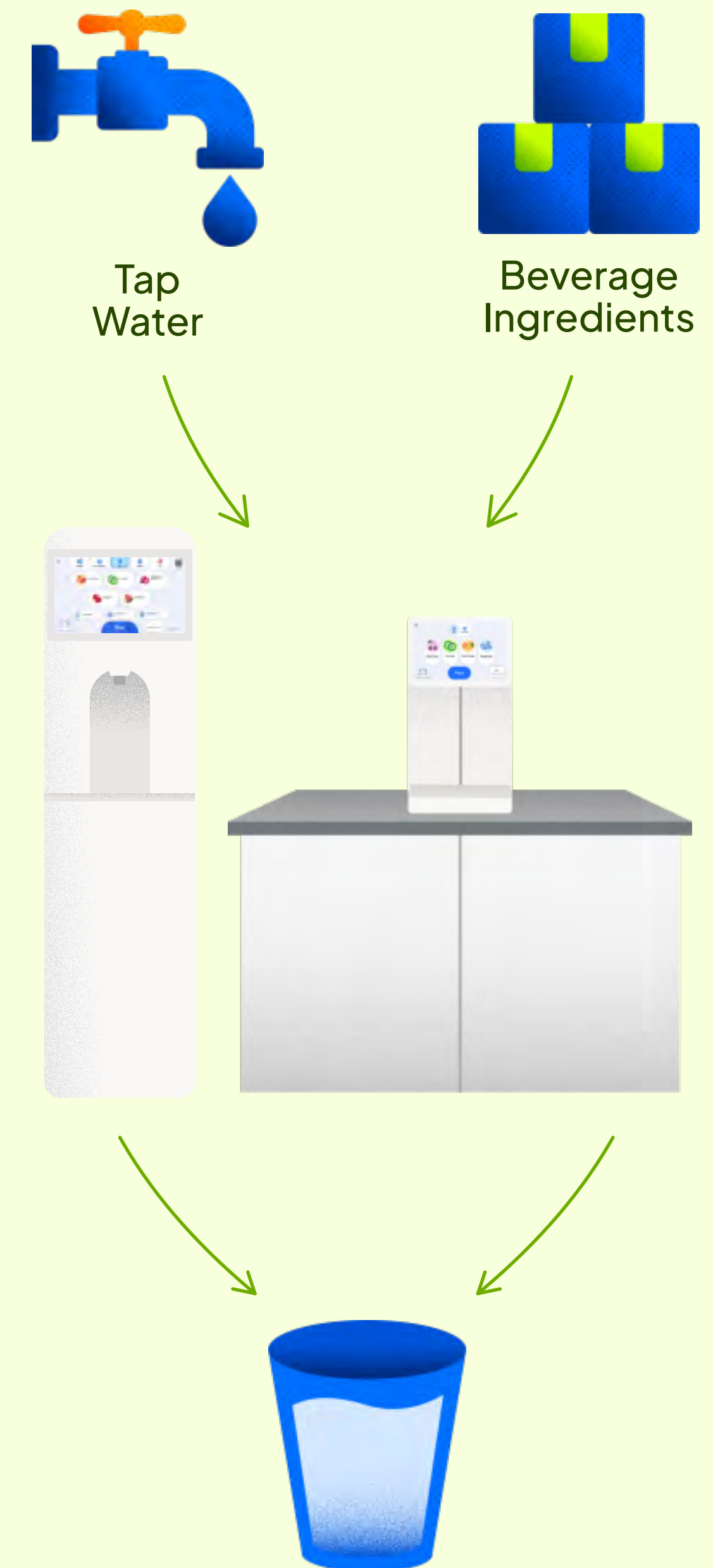
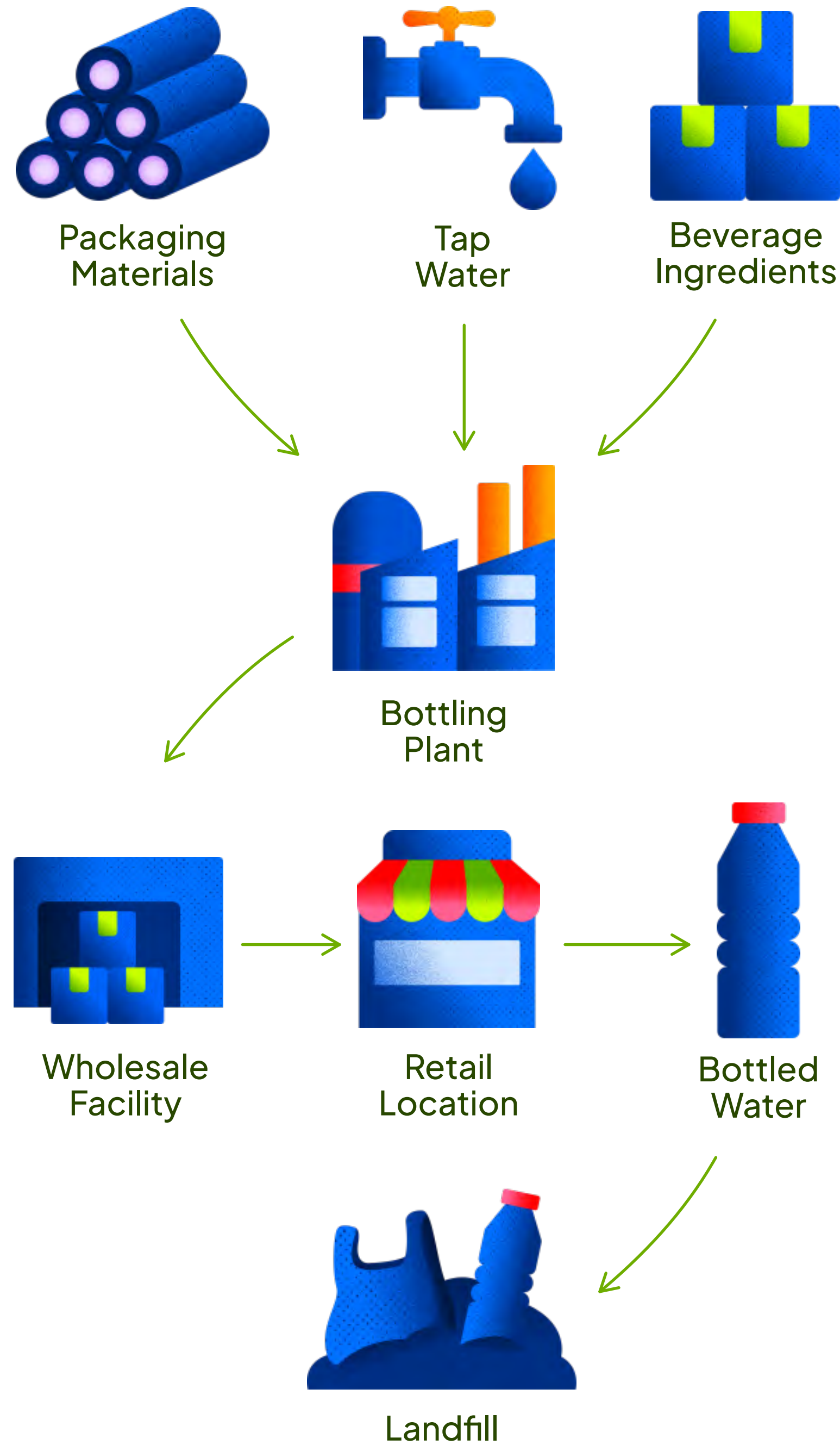


# Reduction in Carbon Emissions Compared to the Traditional Beverage Supply Chain

The traditional beverage supply chain is incredibly unsustainable, with many fuel-intensive steps to transport bottles filled with still and sparkling beverages around the world.

Bevi cuts the number of steps in the beverage supply chain by more than half, lessening the environmental impact with every beverage consumed from one of our machines.

## BEVERAGE INDUSTRY



# How You Can Achieve Net-Zero Goals with Bevi

For organizations committed to achieving net-zero targets, every facet of the corporate footprint requires scrutiny—including the high-volume waste generated by traditional beverage supply chains.

Bevi's Smart Water Cooler® is engineered to meet this challenge, transforming daily hydration from a logistical burden into a measurable driver of greenhouse gas reductions.

By replacing single-use bottles and cans with an integrated beverage platform, businesses can reduce their hydration-related emissions—while also gleaning additional benefits, including space utilization data and beverage consumption trends.

To prove it down to a data point, we ran a life cycle assessment (LCA) of our flagship machine model, the Standup 2.0. Read on to learn how, with Bevi, you can have your beverage and drink it, too.



## Understanding the Life Cycle Assessment

An LCA is often referred to as a “cradle-to-grave” audit that quantifies the total environmental impact of a product or service.

For Bevi, this means measuring every gram of carbon emitted—from the extraction of raw materials and factory assembly in Wisconsin to the electricity used to chill water in your office. We even account for the fuel used by technicians to deliver flavor refills and CO2 tanks.

The assessment then compares this data against the traditional bottled water supply chain. We calculate the energy required to manufacture billions of plastic bottles, the emissions from trucking heavy, water-filled pallets across the country, and the environmental cost of disposal.

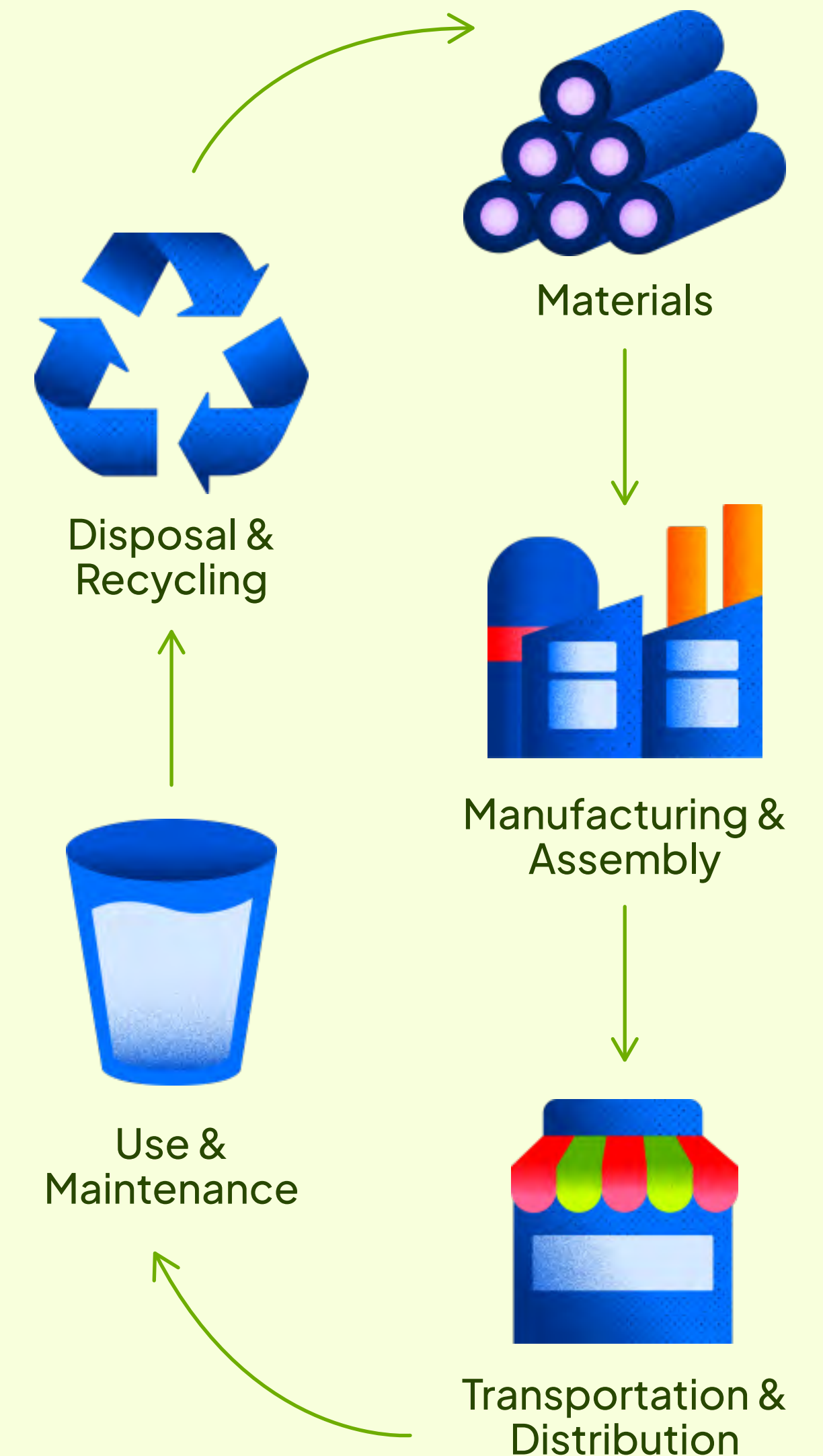
By comparing these two models, the LCA provides a verified data point: because Bevi uses concentrated flavors and local tap water, it bypasses the most carbon-intensive steps of the beverage industry.

**The result is a platform that delivers the same high-quality hydration with up to 9x fewer emissions than single-use plastic bottles.**

Calculations in this life cycle assessment are based on four counterfactuals:

- Bottled water is swapped with a plain glass of Bevi water
- Canned sparkling water is swapped with a sparkling glass of Bevi water
- Vitamin bottled water is swapped with a glass of flavored and vitamin-enhanced Bevi water
- Canned sparkling vitamin water is swapped with a flavored, vitamin-enhanced sparkling glass of Bevi water

These four counterfactuals capture a majority of the beverage types you can currently pour with Bevi: plain still, plain sparkling, plain water with functional ingredients and flavors, and sparkling water with functional ingredients and flavors.



## Key Finding From Bevi's Carbon Footprint Analysis

On average over its lifetime, the Bevi Standup 2.0 machine is estimated to save a total of

# 37,750 lbs

of carbon dioxide emission equivalents (CO<sub>2</sub>e) compared to single-use bottles and cans of water.



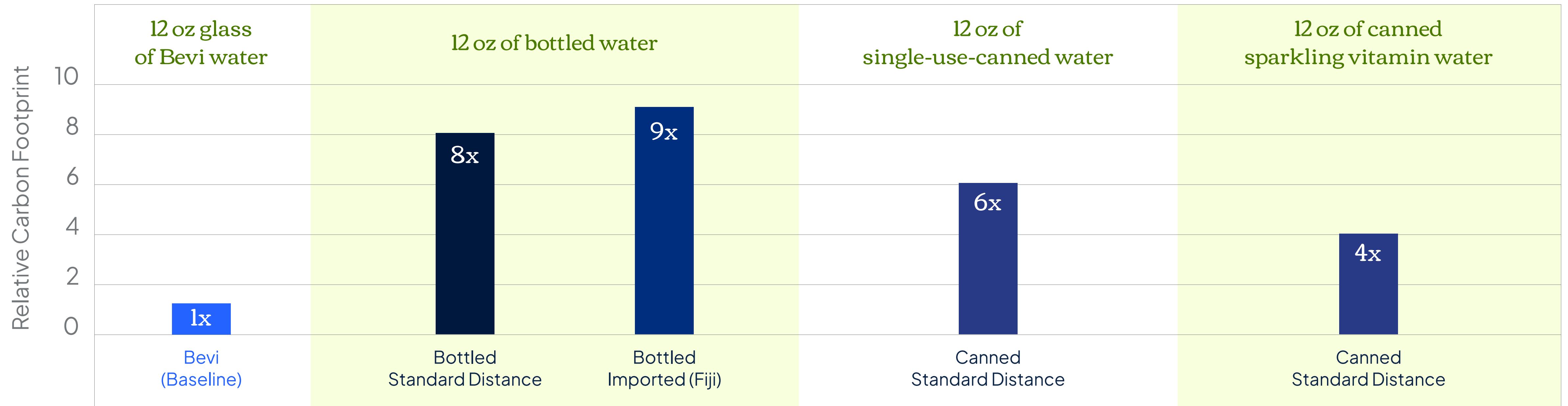
That's like eliminating the fuel emissions from driving a gas-powered car over

# 43,000 miles

The longer a Bevi Standup 2.0 remains in service, the lower its carbon footprint per glass becomes, as initial manufacturing emissions are amortized over a greater volume of pours. This efficiency is maximized by our industry-leading durability and a machine retention rate exceeding 90%.

# From Near and From Far:

## 12 OZ GLASS OF BEVI WATER VS. 12 OZ OF BOTTLED WATER



**From a standard distance.** Bottled water traveling the same distances as Bevi’s flavor concentrate packets is estimated to have almost 8x the carbon footprint of an average plain “bottle” of water poured with Bevi.

Imported bottled water shipped from Fiji and trucked over land for nearly 2,000 miles has almost 9x the carbon footprint of an average plain “bottle” of water poured with Bevi.

Canned sparkling water traveling the same distances as our flavor concentrate is estimated to have up to 6x the emissions of an average sparkling glass of water poured with Bevi.

Canned sparkling vitamin water traveling the same distances as Bevi’s flavor concentrate packets is estimated to have up to 4x the emissions of the same drink poured with Bevi.

Disclaimers:  
 • All Bevi drinks are assumed to be using a reusable glass or bottle that sees an average lifetime of 500 uses.  
 • All drinks with PET bottles are assumed to travel 300 truck miles to make a conservative claim, since there are many (10k+) bottling facilities in the US, according to the US Geological Survey: <https://www.epa.gov/system/files/documents/2023-04/US-GHG-Inventory-2023-Chapter-4-Industrial-Processes-and-Product-Use.pdf>

# Helping Our Customers Reduce Their Emissions While Pouring Joyful Beverages

## Helping Akamai Achieve Their Sustainability Targets

Akamai Technologies, a global leader in cloud computing and content delivery, was looking for a way to keep their employees happy without creating more emission-related waste. As they work towards their ambitious sustainability goals—net-zero and 100% renewable energy by 2030—Akamai is finding ways to make its offices more eco-friendly (and fun) for employees.

One big area of opportunity Akamai saw was in its kitchen and cafeterias, where single-serving flavored sparkling water was popular, but created a lot of waste. By introducing Bevi's smart water coolers, Akamai eliminated single-use bottles and cans while still offering flavored,

sparkling, still, and enhanced cold and hot water options for employees to choose from and customize.

*“Bevi’s commitment to helping our employees stay healthy while lessening their environmental footprint aligns with our commitment to creating global change through local and individual action.”*

—Mike Mattera, Akamai’s Director of Corporate Sustainability



## Keeping Beverages Cold and Plastic Usage Down at This AI Company

At their Boston office, software developer Bynder's outdated water dispenser left employees frustrated with lukewarm drinks and long lines. Installing a Bevi machine helped to fix that.

A Bevi machine is designed to pour beverages at the perfect temperature—a crisp 36 to 39°F for cold water, or an optimal 185 to 195°F for hot water—every time. There's a setting for room temperature water, too, if that's how you roll. (We respect it!) Plus, since the Bevi machines use commercial-grade filters, it can keep beverages flowing quickly. That means less waiting around, happier (and better hydrated) employees, as well as a more productive work environment. Everybody wins—even the environment.

After installing the Bevi machine, Bynder's Boston office manager Sam Pond shared,

*“We've definitely seen a decrease in plastic bottle use overall.”*

With the ability to add functional ingredients—such as Electrolytes and Vitamin Boost—to beverages at any time, the Bevi machine has also replaced the need for single-use plastic dietary supplement packets. “It's much more convenient to just touch a screen to inject some electrolytes or extra vitamins than it is to mix in a packet,” Pond said, appreciating the added benefit of cutting down on even more waste.



## More Sustainable Events with Bevi

Bevi water coolers can also be found supporting event organizers who are looking to reduce single-use plastic waste from their conferences and experiences while keeping attendees refreshed.

The Hollywood Climate Summit is a perfect example. The event brings together industry leaders and environmental advocates to discuss climate action, with a focus on ethical dining and local flavors. They also practice what they preach, using only compostable or reusable service wares, zero-packaging snacks, locally-produced vegan options, and ethically-sourced meats—plus, a Bevi machine to cut down on plastic waste.

*“By partnering [Bevi’s] machines with reusable cups, we significantly reduced our need for any bottled water. Recyclable or not, it’s all resource heavy. Besides our backstage area, all other water on-site came from people using the Bevi machines! This also reduced the work of recycling, since we had zero plastic water bottles going into our recycling bins.”*

—Event Organizer, Hollywood Climate Summit



Photo credit:  
Lex Ryan / VegOut



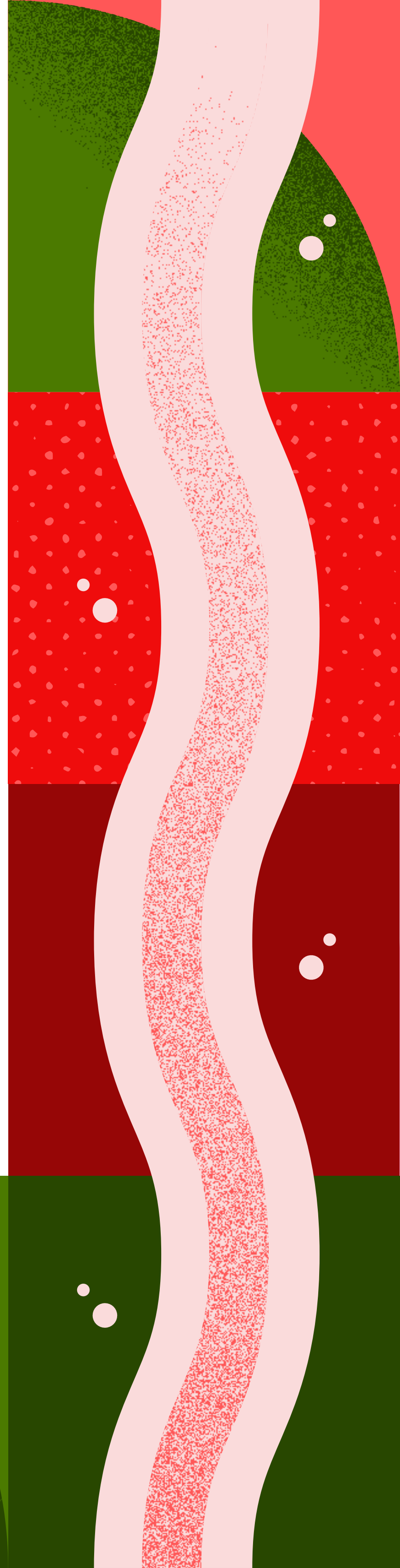
# Our People: The Bevi Culture



Bevi is able to execute on its mission every day thanks to our talented team. At all levels of the organization, it is the people at Bevi who make the magic happen.

# Strategic Anchors Guide How (and Why) We Work

Bevi exists to transform the way the world drinks by making hydration fun, customizable, and sustainable. We do this by bringing joyful beverage experiences that keep people and the planet refreshed. Bevi employees are guided in this pursuit by our strategic anchors: creating beloved products, cultivating a high-quality service network, and scaling Bevi machines across commercial spaces.



## Create Beloved Products

Delivering beautiful, intuitive, and high-performance experiences that delight our customers: this is what it means for Bevi to be a product leader.

- ★ Invest in our R&D, with a lab space right within our corporate headquarters
- ★ Owning our full technology stack, including hardware, software, and beverage
- ★ Maintain the premium quality and design that our brand is known for

## Cultivate a High-Quality Service Network

This is the operational backbone of Bevi's business. It speaks to the power of delivering exceptional experiences to drinkers, clients, and partners—anyone who interacts with Bevi today, tomorrow, and in the future.

- ★ Build a network of high-touch, reliable service across all delivery models
- ★ Use data to provide best-in-class service and proactive fleet management
- ★ Provide excellence in training and customer care to in-house teams and third-party providers

## Scale Bevi Machines Everywhere

This anchor emphasizes Bevi's go-to-market strategies and the importance of scale. Only by eliminating single-use plastic bottled waste and aluminum canned waste across the greatest number of commercial spaces—from offices to gyms, tradeshows to dining halls, retail businesses to warehouse breakrooms, hotels to airports—can we achieve our mission.

- ★ Build connection and trust with our channel partners in the manufacturing, distribution, and market space
- ★ Placing Bevi machines across commercial spaces through a differentiated channel strategy
- ★ Scale faster towards the elimination of single-use plastic and aluminum packaging for beverages

# The People Behind our Mission

At Bevi, people are what drive our mission forward. We stay humble, grounded, and always learning—leading with curiosity, listening with respect, and bringing positive energy and joy along the way. We own it, stepping up with purpose, solving problems, and following through as stewards of the bigger picture. We get better every day, embracing feedback and learning together on the smallest improvements and biggest changes that we know add up.

We work differently by combining this mindset with a deep commitment to excellence in everything we build and deliver. We move fast, work transparently, and focus on outcomes—not just tasks—so that we can reach our ultimate goal of transforming the way the world drinks.

That pride shows up in our product leadership: creating beautiful, intuitive, high-performance experiences, and in the way we deliver them

through exceptional, high-touch service and operational excellence. Every interaction with our customers and champions reflects the care, intention, and quality behind the Bevi experience.



## STAY HUMBLE

We stay open to new ideas and perspectives, knowing better solutions can come from anywhere as we work to reimagine sustainable hydration.



## OWN IT

We hold ourselves accountable for reducing single-use plastic—taking action to scale solutions that make a measurable difference.



## GET BETTER EVERYDAY

We continuously raise the bar, advancing our products and practices to expand our environmental impact over time.

OUR PEOPLE: THE BEVI CULTURE

Working at Bevi means being part of something people don't just use, but love. It's the pride of building a premium product, scaling through trusted partnerships, and expanding reach to see difference at a planetary scale. Our executive leadership team is 60% women—reinforcing our belief that varied perspectives and inclusive leadership are critical to advancing our mission and driving meaningful environmental impact. This belief is why we have been continuously recognized as a best place to work.



# Awards and Recognition



**BOSTON BUSINESS JOURNAL**  
Best Place to Work, 2025



**BUILT IN**  
100 Best Midsize Companies to Work for in Boston, 2025

# Life at Bevi

Bevi's culture emphasizes the importance of creating opportunities that build community, champion an inclusive workplace, and advance our commitment to a sustainable future.



## CARBON KAIZEN

Bevi employees host regular hackathon events for thinking through new sustainability opportunities for our business. For more details on the outcomes of these events, and other sustainability efforts we develop, please refer to the next section in this report.



## GREEN TEAM

From volunteering at local farms to reducing waste in our offices, the Green Team keeps Bevi's eco-values front and center.



## WOMEN OF BEVI

A space to uplift and empower women at Bevi – through connection, mentorship, and moments of celebration.



## QUENCHED & QUEER

A safe, inclusive, and joyful space for LGBTQIA+ employees and allies – no matter your identity or experience.



# Operational Excellence: The Bevi Process

At Bevi, we work every year to make our products and processes more sustainable, reducing our carbon footprint without compromising quality. We aren't looking to just talk the talk. We're here to walk the walk. Practice what we preach. Making the beverage industry more sustainable means running our business sustainably, too.

# Continuous Improvement: What Getting Better Every Day Looks Like

One of the key ways Bevi pushes its sustainable business operations forward is through regular hackathon events, the Carbon Kaizen, which is led by the Green Team and sees participation across all departments, including operations, marketing, product design, sales, HR, field operations, and hardware and software engineers. This event challenges the team to find creative ways to reduce our operational footprint. Kaizen is a methodology originating in Japan that refers to “continuous improvement.”

2025’s winning ideas focused on rethinking Bevi’s logistics, lab practices, and packaging materials to ensure our internal processes are as sustainable as the machines we build.

## Winning Ideas from the 2025 Carbon Kaizen



### Supply chain optimizations start with the (wooden) base

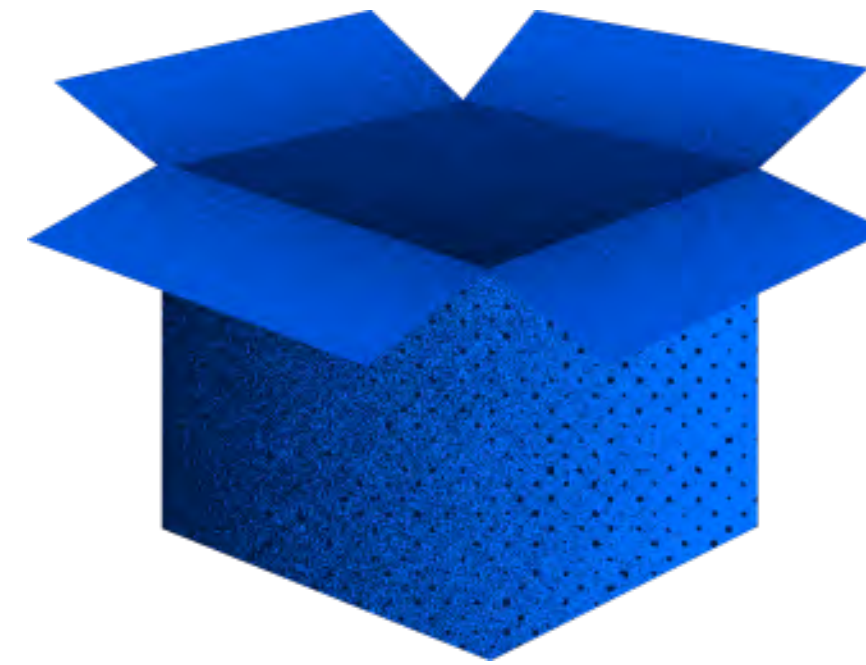
Wooden pallets that are used for shipping Bevi machines to their happy new commercial spaces should be returned and reused. This leads to a lower cost and a smaller emissions footprint over time compared to always sourcing new pallets.



### Improving the sustainability of our beverage testing environment

Over a thousand gallons of tap water can be used per month in Bevi's lab for testing new machine components and beverages.

The team built a portable water recycler that can store, sanitize, temperature control, and pump water back into machines, which now has the potential to reduce water use by over 80%.



### Chiller packaging that travels lighter

By reducing the amount of plastic wrapping that's needed to protect our machine's chiller units during shipment, Bevi would be able to further reduce carbon emissions from the lifetime usage of our machines.



### Improving Energy Saver Mode on our Machines

We developed our Energy Saver Mode feature further so that machines sleep through the weekend, for commercial spaces that do not have foot traffic during this time.

# Advancing Operational Efficiency to Scale Sustainable Impact

Beyond specific kaizens or hackathon events, Bevi maintains a year-round commitment to the intersection between operational efficiency and environmental sustainability. From managing our own electronic waste to giving legacy machines a second life, these initiatives ensure that our mission of waste reduction extends to every corner of our business.

Here's a snapshot of the improvements we've put into place over the last year (and a callout for what we've continued doing from previous years) that's always moving us closer to a more sustainable and resilient supply chain.

## HANDLING E-WASTE FROM BEVI HQ

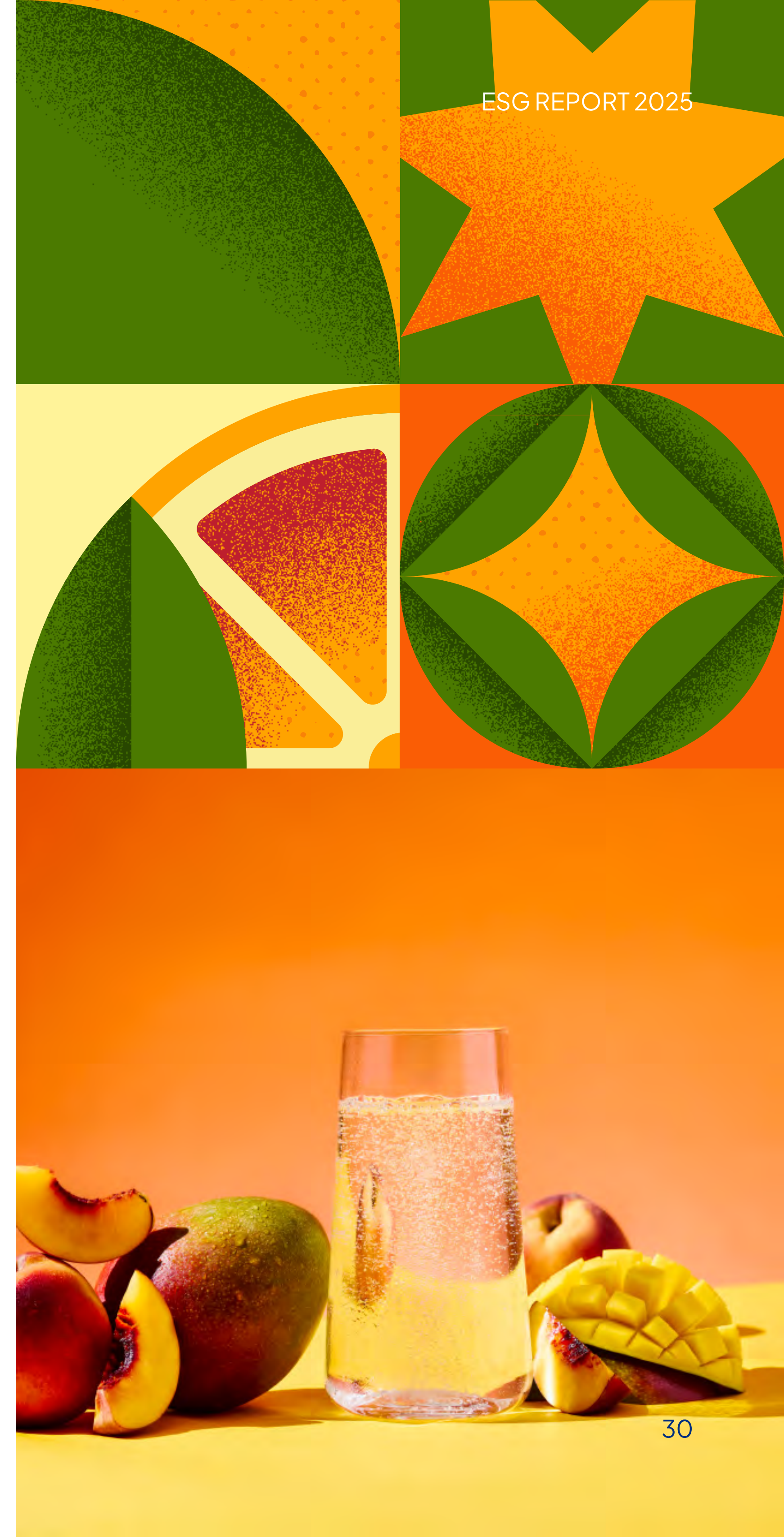
Electronic waste happens when you're equipping employees with the tools and products they need to perform their work and building electronic hardware that makes

the world more sustainable. That doesn't mean this waste should cause a negative impact on our environment by improper disposal.

Bevi wanted to find a recycling partner that could keep any e-waste from reaching landfills. After contacting 15+ New England recyclers, we settled on one just 30 minutes from our headquarters with a stellar reuse policy. The proximity also meant we could further minimize the carbon impact from processing.

- Guaranteed no direct landfill dumping
- Secured shredding of all data-bearing devices
- Optimized reuse of materials and salvageable electronics, including our printed circuit boards

Not only could we safely recycle these electronics from a security standpoint, but also support the creation of better electronic equipment in the future. Next, we're exploring lower-cost recycling options specifically for LCD screens that are used on our machines.



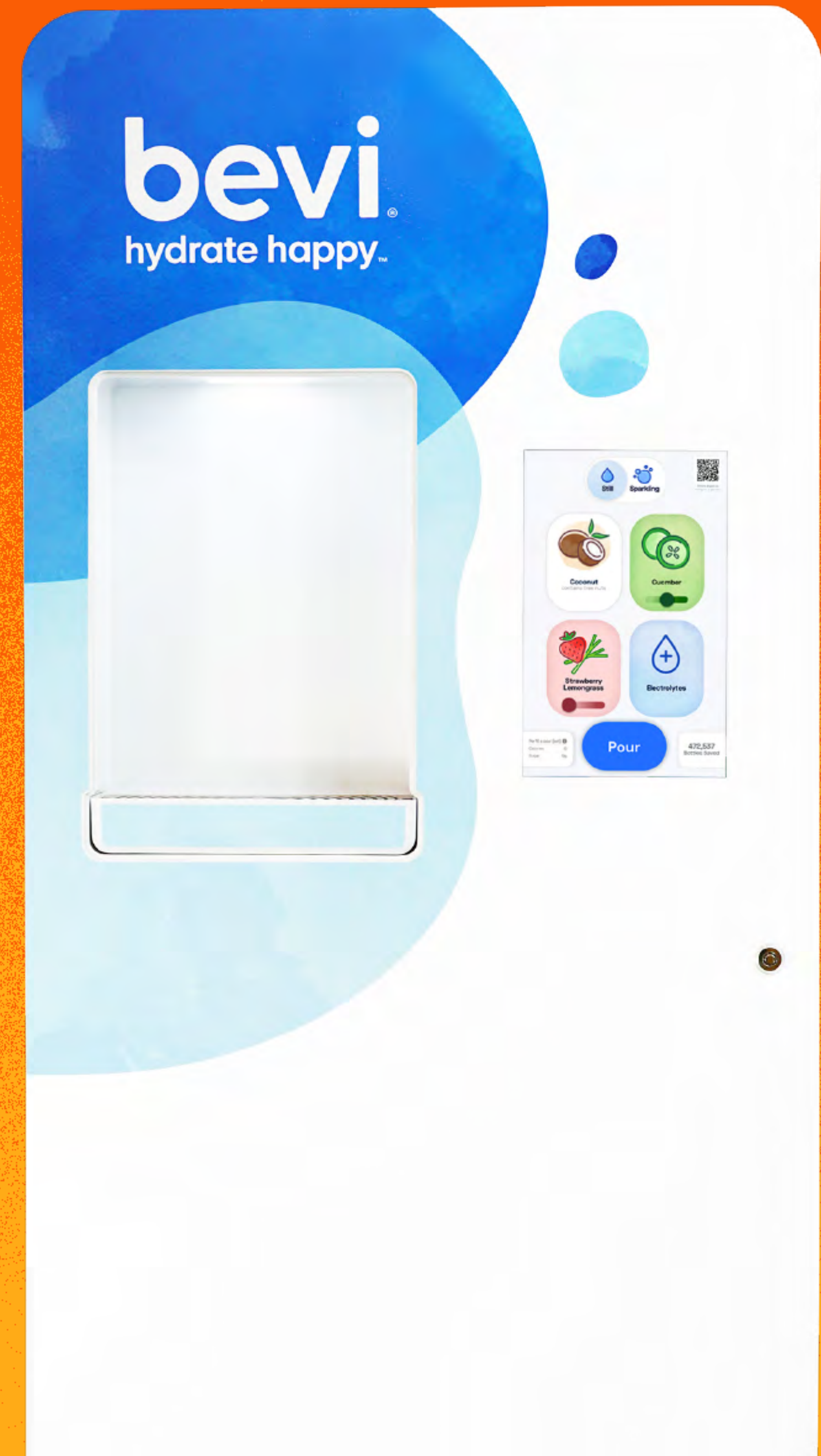
## REFURBISHMENT PROGRAMS FOR LEGACY MACHINE MODELS

Bevi evaluates and refurbishes returned legacy water cooler machines and offers them back on the market at a reduced price point. It's a win for new and current customers who are on a tighter budget, as well as our environment.

Each machine in the refurbishment process goes through rigorous quality checks and meticulous testing to adhere to certification standards. Even though they're older models, refurbished Bevi water dispensers can still be loaded with the newest flavor and enhancement releases, always making hydration fresh and enjoyable.

In 2025, Bevi concluded its in-house refurbishment program for the Standup 1.5, which saw over 300 of these legacy machines find new spaces to call their commercial home. Additionally, Bevi supports its numerous and valued distribution partners on standing up their own refurbishment programs for the legacy models in their fleets. Taken together, Bevi is proud to have supported refurbishment for thousands of its machines over the years.

With Bevi's in-house refurbishment program, **300+** machines found new commercial homes thanks to this program every year.





Conclusion: See How  
Bevi Fits Into Your  
Net-Zero Goals

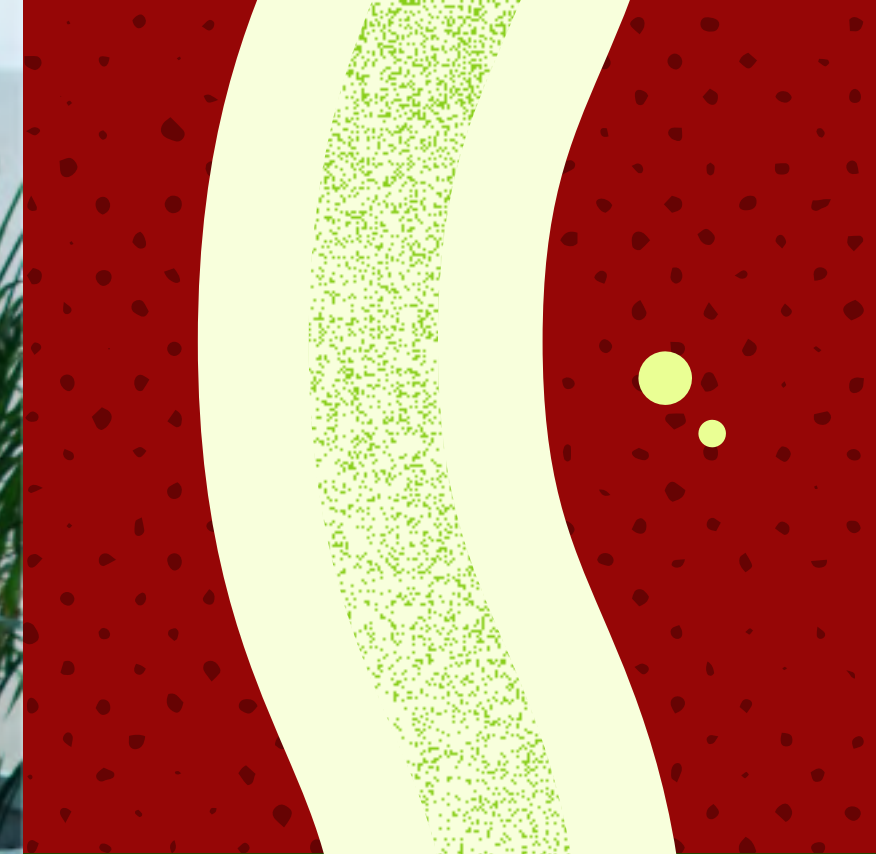
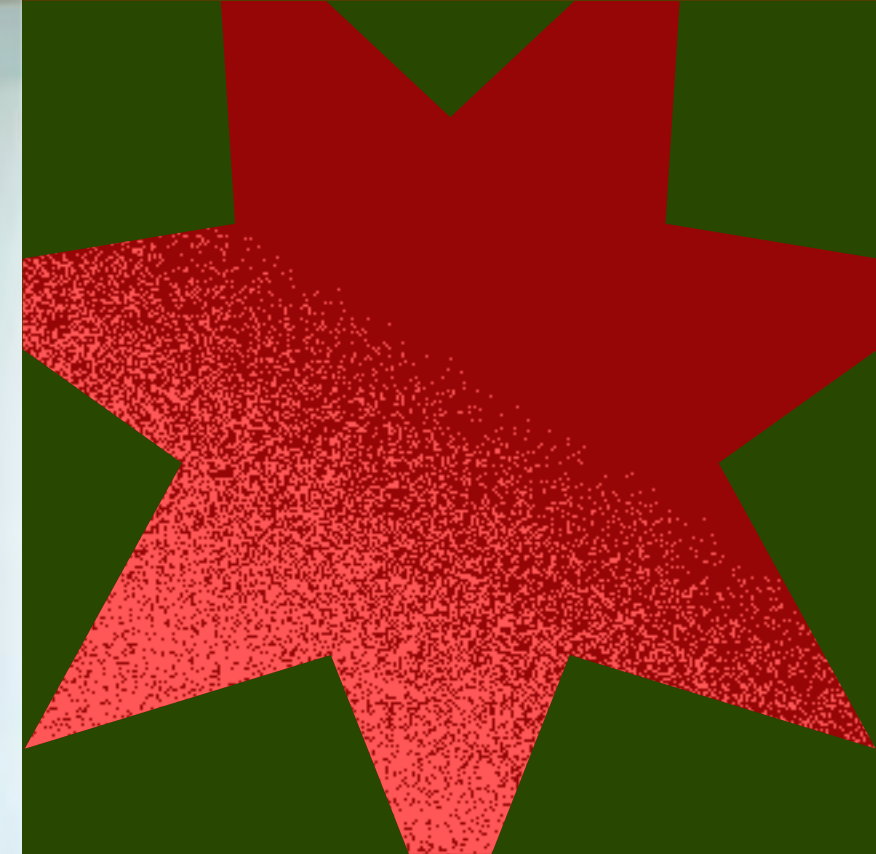
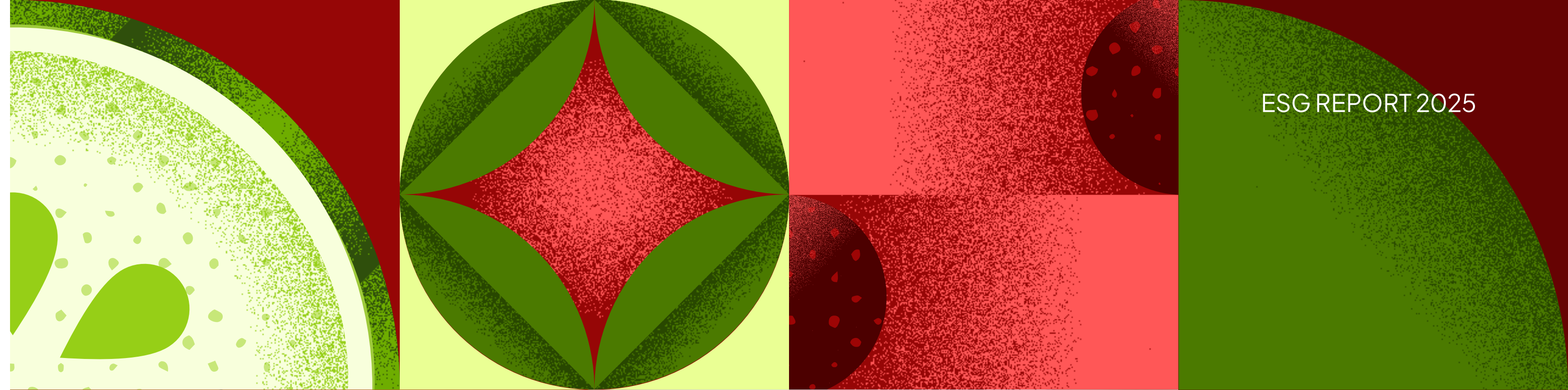
CONCLUSION: SEE HOW BEVI FITS INTO YOUR NET-ZERO GOALS

By transitioning from a traditional beverage supply chain and using single-use bottles and cans to the Bevi platform, your organization eliminates plastic waste while making measurable progress toward net-zero goals.

We thank our partners and customers for being on this sustainability journey with us. By bringing Bevi machines to market and enjoying the beverages they pour, you have played a part in eliminating this pesky form of plastic pollution. You've gotten to learn firsthand how great highly-filtered water can taste, with or without bubbles, flavors, or functional ingredients. You chose to hydrate happy.

With a smaller carbon footprint and IoT-driven telemetry for transparent ESG reporting, Bevi aligns corporate wellness with rigorous sustainability targets. Together, we have offset one billion bottles. Now, help us scale that impact with your organization.

Reach out to advance your sustainability milestones with Bevi.



[www.bevi.co](http://www.bevi.co)  
(617) 315-4715

 @getbevi  
 @bevi.official  
 @bevi

**bevi**®

[www.bevi.co](http://www.bevi.co)

(617) 315-4715

 @getbevi

 @bevi.official

 @bevi