

Choose the best camera mode for your meeting and device

Meetings almost always include one or more people joining remotely. With the right camera settings, you can ensure that the meeting is equally engaging for everyone in the room and for those joining remotely.

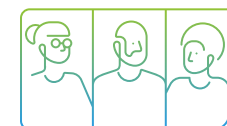
Camera modes allow you to cater to any size or complexity of room or meeting type. And, the camera mode applies to any type of meeting platform including Webex, Microsoft Teams, and Zoom.

Get started

Depending on the device, you can choose from one of the following camera modes:



Dynamic mode – This Agentic AI director dynamically optimizes camera modes best suited to the current situation in the room.



Frames – Camera zooms to show people individually or in smaller groups. See different scenarios and examples [here](#).



Group and Speaker – Camera will show two views; a group overview and a close-up of the person speaking.
Available on Room Kit Pro, Room Kit EQ and EQX.



Manual – Adjust the camera yourself.



Custom preset – [Create custom views](#) with predefined zoom and camera direction.



Tip: Your [selfview](#) shows what others see from your Board, Desk, or Room series device in a call. Use it to confirm that they see what you want them to see.

