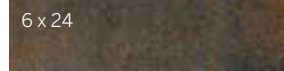


# Altered State

## Porcelain Stone®

### Sizes Available in all colors



### Mosaics Available in all colors



2 x 12 Mosaics available in UPS. (Mounted on a 297 mm x 297 mm sheet.)

### Get Planked!

Our Porcelain Stone® products are available in popular plank shapes with no minimum order and quick fulfillment.

See website for more details and sizes.



### Sizes & Finishes

#### Field Tile - Rectified

Available in all colors

Nominal (in)	Actual (mm)	Thickness (mm)	Grout Joint (mm)	Finish
6 x 24	147 x 597	9.5	3	UPS
12 x 24	297 x 597	9.5	3	UPS
24 x 24	597 x 597	9.5	3	UPS

All field tile is rectified  
Crossville recommends a minimum 3mm grout joint.  
Please note: Tile is directional. Please install accordingly.

#### Mosaics

Available in all colors

Nominal (in)	Actual (mm)	Thickness (mm)	Grout Joint (mm)	Finish
2 x 12*	47 x 297	9.5	3	UPS

\* 2 x 12 mosaic is mounted on a 297 x 297 sheets with a 3mm grout joint. The 2 x 12 mosaic can be used in linear drain shower pans as long as the 12 inch side runs parallel to the drain.

#### Coordinating Trim

Available in all colors

Nominal (in)	Actual (mm)	Thickness (mm)	Grout Joint (mm)	Finish
6 x 24 Single Bullnose	147 x 597	9.5	3	UPS



6 x 24 Single Bullnose

#### Wet Dynamic Coefficient of Friction Range

UPS	0.42 - 0.52	ANSI A326.3
-----	-------------	-------------

### Product Performance

Breaking Strength	>450 lbf	ASTM C648
Bond Strength	>200 psi	ASTM C482
Chemical Resistance	Unaffected	ASTM C650
Frost Resistance	Resistant	ASTM C1026
Water Absorption	<0.50%	ASTM C373
Scratch Hardness	7	Mohs Scale

### Shade & Texture Index

Altered State has a shade variation of V3.

V1	V2	V3	V4	V1 Uniform Appearance
				V2 Slight Variation
				<b>V3 Moderate Variation</b>
				V4 Substantial Variation

This porcelain tile product is produced with a V3 variation. Expect that the amount of color and texture on each piece may vary significantly. Inspect the product upon delivery and for best results, blend tile from several cartons during installation.

### Application Areas

Finish	Interior Floors (dry)	Interior Walls (wet/dry)	Exterior Walls	Interior Floors (Standing water/shower floors)	Exterior/Paving	Pool/Fountain Full Lining**	Water Line Pool/Fountains
UPS	✓	✓*	✓			✓	✓

\* The 2 x 12 mosaic can be used in linear drain shower pans as long as the 12 inch side runs parallel to the drain.

\*\* Excludes mesh mounted mosaics. Crossville recommends face mounted or edge mounted mosaics for fully submerged applications. Contact your Crossville sales representative for more information.

NOTE: Trim applications will differ from field tile applications for the same series.

For more information on ANSI- A362.3 visit our website at <https://www.crossvilleinc.com/Resources/Tile-101/DCOF?tab=1>

