

# FERN

---

The finely carved swirling design of Fern evokes fossilized nature — a moment frozen in time, as if the delicate leaves of an ancient plant were pressed into the stone and preserved. The soft muted tones of Ming Classico marble, Belgian Bluestone, or Barley limestone set an elegant background upon which the intricate pattern plays out, creating a textured, nuanced tile with organic movement. Fern is stocked as an 18"x18" tile.

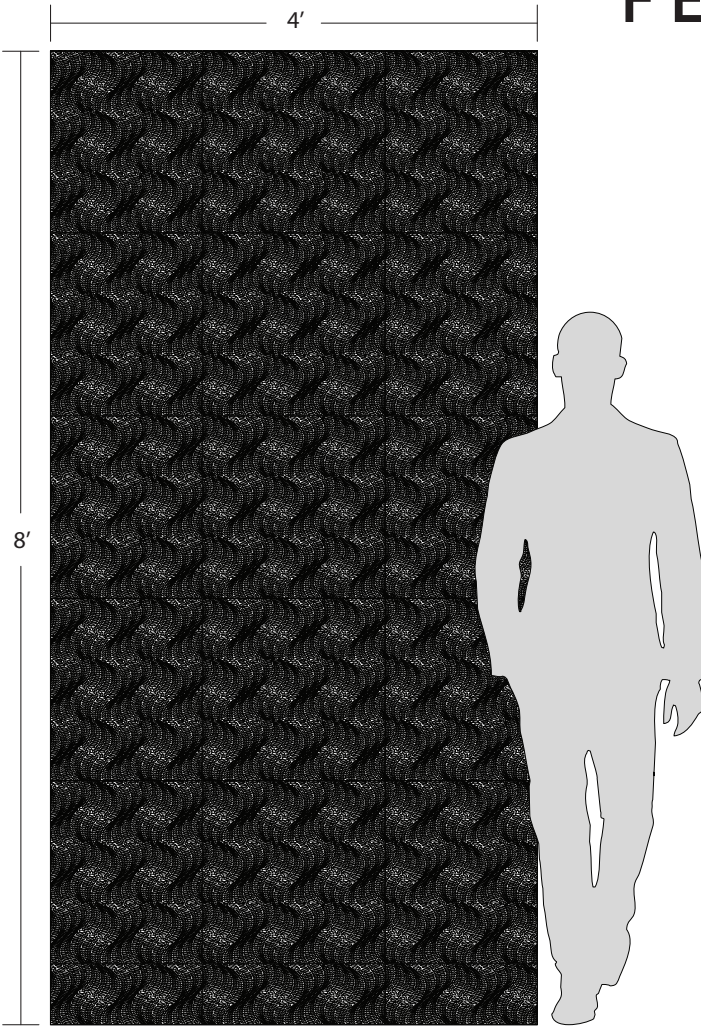


*Shown here: Fern Barley*

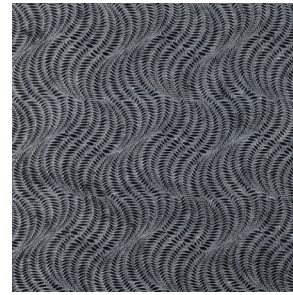
ARTISTIC TILE

ARTISTICTILE.COM | OCTOBER 2024

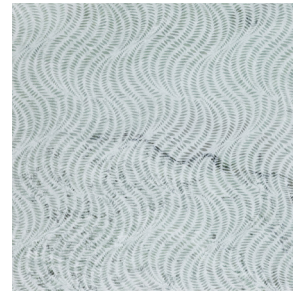
# FERN



Fern Barley



Fern Belgian Bluestone



Fern Ming Classico

APPLICATIONS									VARIATION <sup>4</sup>				TAILORED TO CUSTOMIZATION	
INTERIOR FLOOR	INTERIOR WALL	SHOWER WALL	SHOWER FLOOR	EXTERIOR FLOOR	EXTERIOR WALL	POOL/ FOUNTAIN	COUNTER TOP	FIREPLACE SURROUND	V1	V2	V3	V4	CARPET CUTTING	FIELD
No	All	Yes, including steam <sup>1</sup>	No	No	No	No	No	Yes					FINISH	MOSAIC
													SADDLE	VANITY TOP
													WATERJET	

INSTALLATION/MAINTENANCE										
SETTING MATERIAL	GROUT	GROUT JOINT	MEMBRANE	CAULK	SEALER	CLEANER	INSTALLATION INSTRUCTIONS	LAYOUT	DRY LAYOUT	QR CODE
Ardex X77 White Microtec Fiber Reinforced Mortar <sup>2</sup>	Ardex FG-C Microtec Unsanded <sup>3</sup>	1/16" minimum	Ardex 8 + 9	Ardex SX Silicone Sealant	AquaMix Sealer's Choice Gold	AquaMix Concentrated Cleaner	TCNA Handbook	Maintain Tile Orientation	Required	

**AVAILABLE SIZES**

**STONE**  
18" x 18" x 3/8"

**NOTES**

<sup>1</sup>Showers: Product MUST be installed in accordance with current TCNA Handbook Stone Methods. Minor vein washout is possible in wet installations.

<sup>2</sup>Alternate setting material - Ardex X5 White Medium Bed Mortar or Mapei Ultraflex LFT White

<sup>3</sup>Alternate grout - Ardex FL Rapid Set Sanded or Mapei Ultracolor Plus FA

<sup>4</sup>Barley is V3

Tech Note: Seal and utilize a grout release prior to grouting. The tile in this collection can be carefully bag grouted. White mortar is recommended for natural stone. Do not use color enhancer. Material may exhibit random spotting of mineral deposits.