

BILLIE OMBRÉ

Our ode to legendary jazz musician Billie Holiday, Billie Ombre traces Holiday's trademark melodic vocalizations along a wave of vibrant colored glass, creating an overall ombre effect. The Billie Collection includes Grey, ranging from rich charcoal to pure white; Blue, which wends from glistening navy to cool sky; Green, from deepest forest to palest moonlight; and Moonbeam, which glows with shimmering opalescence. All available in the Billie Ombre sheet, going from light to dark, and in solid Billie Gloss "extender" sheets, in a dark and light selection for each color series, offering a unique array of design possibilities.

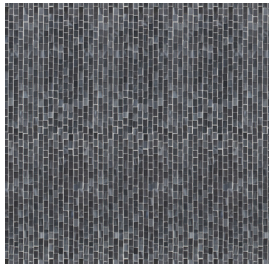


Picture shown: Grey Ombre Gloss and Ice White Solid with Fresh Lily Grout

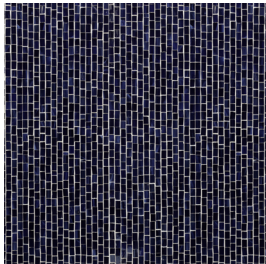
IC FF INTERIOR DESIGN
NYC AWARDS
X DESIGN
2019 AWARDS WINNER

BILLIE OMBRÉ

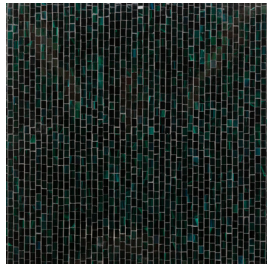
EXTENDERS



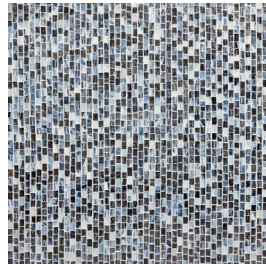
GREY - GLOSS



NAVY - GLOSS

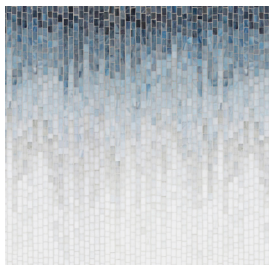


DARK GREEN - GLOSS

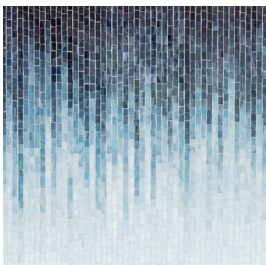


MOONBEAM GLASS - GLOSS

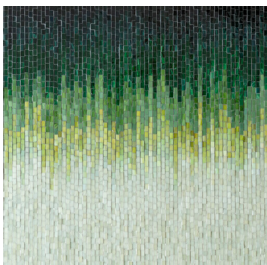
OMBRÉ



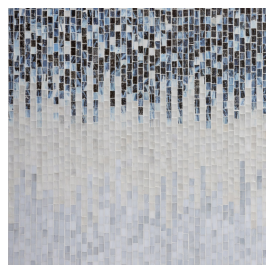
GREY OMBRÉ - GLOSS
BB Blue, Mingus Grey, Veined White, Stormy Greige, Ice White



BLUE OMBRÉ - GLOSS
Navy Blue, Denim Blue, Trumpet Turquoise, Light Bue

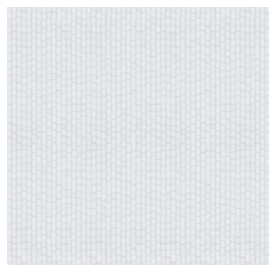


GREEN OMBRÉ - GLOSS
Gillespie Dark Green, Gillespie Malachite, Medium Forest Green, Light Green, Peggy Pale Green

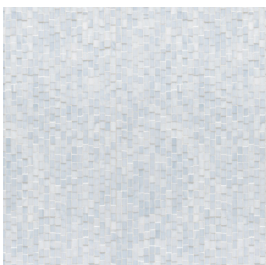


MOONBEAM - GLOSS
Moonbeam Gloss, Veined White

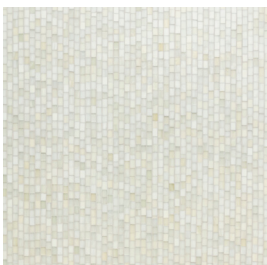
EXTENDERS



ICE WHITE - GLOSS



LIGHT BLUE - GLOSS



PALE GREEN - GLOSS

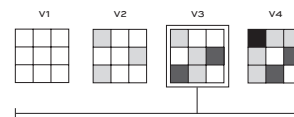


VEINED WHITE GLASS - GLOSS

APPLICATIONS

INTERIOR FLOOR	INTERIOR WALL	SHOWER WALL	SHOWER FLOOR	EXTERIOR FLOOR	EXTERIOR WALL	POOL/ FOUNTAIN	COUNTER TOP	FIREPLACE SURROUND
Light Traffic Residential	All	Yes, including steam*	Yes*	No	Yes	No ¹	No	Yes

VARIATION



INSTALLATION/MAINTENANCE

SETTING MATERIAL	GROUT	GROUT JOINT	MEMBRANE	CAULK	SEALER	CLEANER	INSTALLATION INSTRUCTIONS	LAYOUT	DRY LAYOUT
Mapei Adesilex P10/Keraply White ²	Mapei Ultracolor Plus FA ³	As established on sheets	Mapei Mapelastick AquaDefense	Mapei Keracaulk Sanded	Not Required	AquaMix Concentrated Stone & Tile Cleaner	A.T. Guidelines	No	Required ⁴

NOTES

¹ Available face mounted on a special order basis for use in submerged applications.

² Alternate mortar - Ardex X77 White, Mapei Keracolor Unsanded, or Ardex FG-C Microtech Unsanded.

Ardex X77 White - Not suitable for metallic colorways or submerged applications.

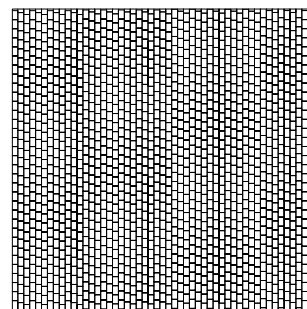
Mapei Planicrete W or Litokol Litoelastic- for Moonbeam Ombré and Moonbeam Gloss extender.

³ Alternate grout - Mapei Keracolor Unsanded or Mapei Ultracolor Plus.

⁴ Layout for color and vein selection before installation.

Tech Note: Grout joint between mosaic sheets should be the same as joints within the sheets. Particular attention should be paid to the joints between sheets - adjusting individual pieces if necessary to produce a 'seamless' installation. Final appearance of installation will be influenced by choice of grout color. Mockup to confirm grout color selection highly recommended. *Moonbeam Ombré and Moonbeam Gloss extender are not suitable for any wet areas.

MOSAIC



(0.91 sf/unit)
Mesh mounted interlocking sheet
20" x 20" concept board

BILLIE OMBRÉ

LAYOUT OPTIONS



INSTALLATION INSTRUCTIONS

The diagram shows the process of building a vertical row. On the left, a single 'ONE BILLIE OMBRE UNIT' is shown as a small rectangle with a red serrated top and bottom edge and a blue-to-white gradient. An arrow points from this unit to a single 'VERTICAL ROW' in the center. This row is a taller rectangle with the same gradient and serrated edges, featuring a green star at the bottom left and a red wavy line across its middle. A second arrow points from the vertical row to the right, where a larger section labeled '9 UNITS IN REPEAT' is shown. This section consists of three identical vertical rows placed side-by-side, each with its own green star at the bottom left and red wavy line across the middle.

ARTISTICTILE.COM | FEBRUARY 2025