

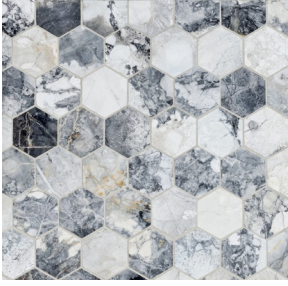
HEXAGON MOSAIC

Our exquisite Hexagon Mosaics are crafted from a captivating array of natural stone options. Elevate your space with the timeless allure of these stunning tiles, meticulously designed to infuse elegance and sophistication into any room. Currently stocked in 3cm and 5cm sizes.



HEXAGON MOSAIC

Hexagon 5.0 cm



Invisible Grey
Honed



Verde Reale Classico
Honed

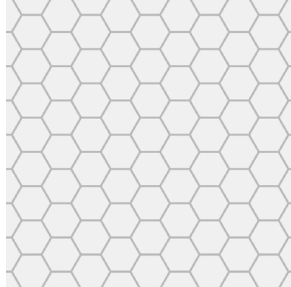


Viola Reale
Honed

Hexagon 3.0 cm



Volakas
Honed



Thassos
Polished



Textura Bianco Carrara
Mixed Finish



Statuary
Polished



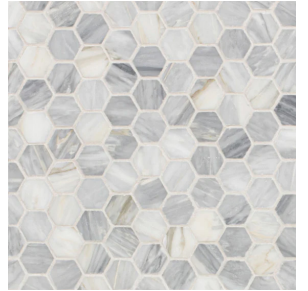
Pacific White
Polished



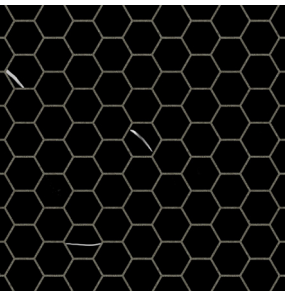
Rivershell White
Polished



Bianco Carrara
Polished & Honed



Calacatta Bluette-
Honed



China Black
Polished



White Sand
Polished



Bianco Dolomiti
Polished



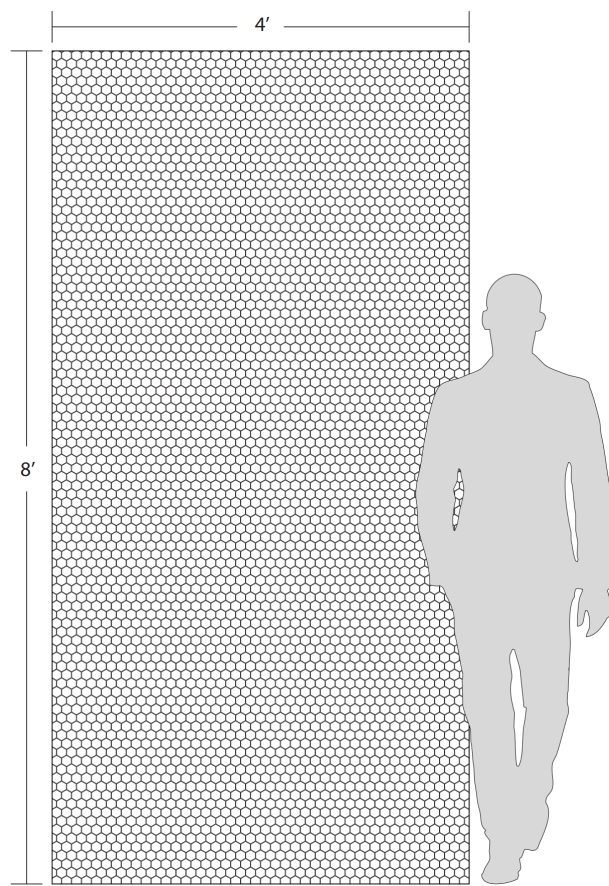
Arabescato D'Oro
Honed



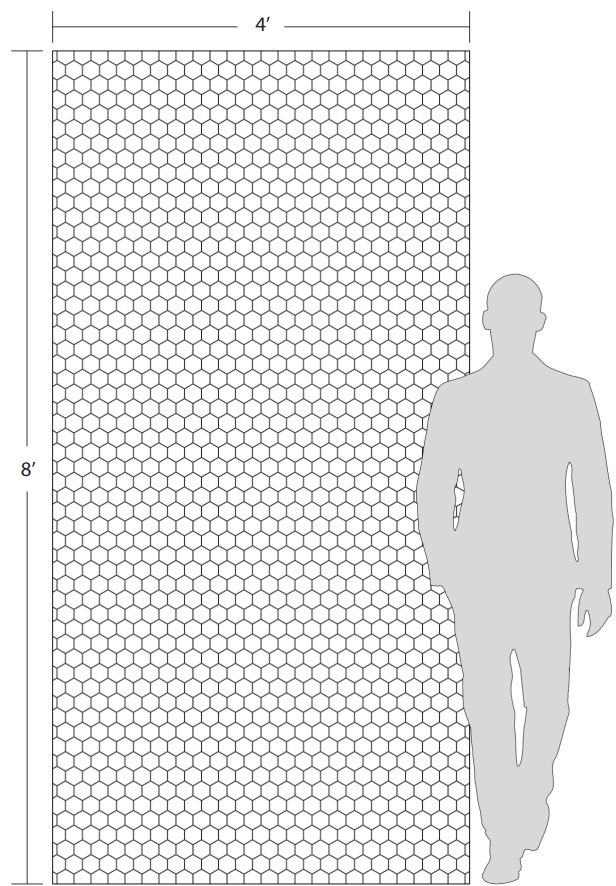
Calacatta Gold
Polished & Honed



Lilac
Honed



3 CM HEX Human Scale



5 CM HEX Human Scale

| APPLICATIONS | | | | | | | | | VARIATION | | TAILORED TO CUSTOMIZATION |
|---------------------------------|---------------|-----------------------------------|----------------------|----------------|---------------|----------------|-------------|--------------------|---|--|---------------------------|
| INTERIOR FLOOR | INTERIOR WALL | SHOWER WALL | SHOWER FLOOR | EXTERIOR FLOOR | EXTERIOR WALL | POOL/ FOUNTAIN | COUNTER TOP | FIREPLACE SURROUND | <div><div>V1</div><div>V2</div><div>V3</div><div>V4</div></div> | | CARPET CUTTING |
| Light/Medium Traffic Commercial | All | Yes, including steam ¹ | Yes, including steam | No | No | No | Yes | Yes | | | FIELD |
| | | | | | | | | | | | FINISH |
| | | | | | | | | | | | MOSAIC |
| | | | | | | | | | | | SADDLE |
| | | | | | | | | | | | VANITY TOP |
| | | | | | | | | | | | WATERJET |

| INSTALLATION/MAINTENANCE | | | | | | | | | | |
|---|---|---------------|--------------------------|--|------------------------------|------------------------------|---------------------------|--------|-------------|---------|
| SETTING MATERIAL | GROUT | GROUT JOINT | MEMBRANE | CAULK | SEALER | CLEANER | INSTALLATION INSTRUCTIONS | LAYOUT | DRY LAYOUT | QR CODE |
| Ardex X4 White Tile & Stone Mortar ² | Ardex FG-C Microtec Unsanded ¹ | 1/16" minimum | Ardex 8 + 9 ⁴ | Ardex SX Silicone Sealant ³ | AquaMix Sealer's Choice Gold | AquaMix Concentrated Cleaner | TCNA Handbook | No | Recommended | |

| NOTES |
|--|
| <p>¹ Shower - Product must be installed in accordance with current TCNA Handbook Stone Methods.</p> <p>² Mortar - For Thassos, Verde Reale, Viola Reale and Pacific White use Ardex X77 White Microtec Fiber Reinforced Mortar. For Calacatta Bluette use Ardex N23 White Microtec Rapid Set.</p> <p>³ Caulk - For China Black, Calacatta Gold, Rivershell White, and Statuary use Mapei Keracaulk Siliconized Acrylic Caulk. For Verde Real Classico use Ardex SX Silicone Sealant.</p> <p>⁴ Membrane - For China Black, Calacatta Gold, Rivershell White, and Statuary use Mapei Mapelastix AquaDefense.</p> <p>Technote: Sheets are irregular and combine into a seamless interlocking pattern. Plan your layout accordingly. White mortar is recommended for natural stone. For Arabescato D'oro and Thassos install with white thinset only. If job requires mud work, white portland cement must be used. China Black will exhibit surface scratching when used on floors, and in wet areas may discolor slightly due to soap residue or mineral deposits. For Calacatta Bluette install with Ardex N23 White or Mapei Granirapid White System. Do not install with organic adhesive, or in areas with rising moisture. Consider the use of a waterproofing membrane</p> |

| AVAILABLE SIZES |
|--|
| 3CM HEX MOSAIC SHEET SIZE 11-3/8" x 12" x 3/8" 0.96 SF/PC |
| 5CM HEX MOSAIC SHEET SIZE 11-7/8" x 10-1/4" x 3/8" 0.84 SF/PC |

SETTING NATURAL STONE MOSAICS ON A SHOWER FLOOR WITH ARDEX 100% SOLIDS EPOXY ADHESIVE WHITE

ARDEX 100% Solids Epoxy Adhesive White is suitable for each of the following installation methods shown in the Shower Receptors section in the most current edition of TCNA Handbook for Ceramic, Glass, and Stone Tile Installation.

B414-24 Stone, B441-24 Stone, B415-24 Stone, B420-24 Stone,
B426-24 Stone, B431-24 Stone, B421-24 Stone, B422-24 Stone.

| IMPORTANT NEXT STEPS: | IMPORTANT WATER CLEANUP STEPS |
|---|--|
| <ul style="list-style-type: none">• Pour Part A (Resin) into Part B (Hardener) bucket and hand mix to achieve color blend.• Mix using a power mixer (approx. 650 RPM) for approx. 2 minutes.• Pour the entire mixture out of the bucket onto the floor or onto a scrape piece of tile. It is very important to get the entire mixture out of the bucket immediately.• Spread a thin layer of epoxy mortar with a flat trowel over a predetermined area of the shower floor.• Using a square notch trowel or a V-notch trowel, spread the epoxy mortar over the same predetermined shower floor area.• Next flatten out all trowel ridges with flat side of trowel striving to achieve 100% coverage over the predetermined shower floor area.• Place the interlocking mosaic sheets into mortar bed over the predetermined shower floor area for 100% coverage.• Tap down and level the mosaic sheets with a grout float over the predetermined area.• Allow mortar to set, harden, and cure. | <ul style="list-style-type: none">• Wipe up any epoxy residue with sponges and clean water.• Note: No soap and no chemicals are needed. Just clean water.• Rinse sponges and change the water often.• Finally wipe with cool, clean water & clean sponges.• Use clean microfiber cloths for final wipe down. |

Artistic Tile recommends sealing all natural stones before grouting.