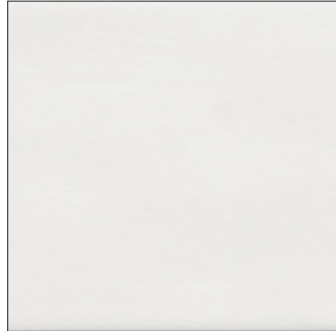
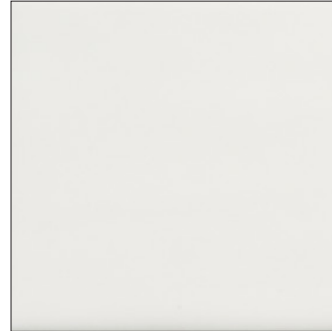


URBAN WALL TILE | V1 | 2.5x8 (actual 2.559 x 7.874 x 0.254")



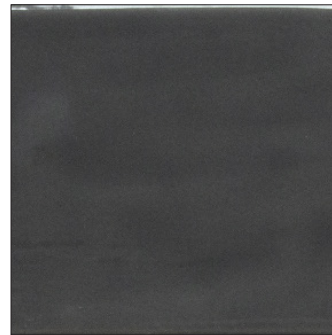
CITY LIGHTS | Matte
T-VS-URB-CTYL-WT-2HX8-M



CITY LIGHTS | Glossy
T-VS-URB-CTYL-WT-2HX8-GLS



CITY NIGHTS | Matte
T-VS-URB-CTYN-WT-2HX8-M



CITY NIGHTS | Glossy
T-VS-URB-CTYN-WT-2HX8-GLS

Material Composition: White Body
Application: Wall Wet or Dry
Minimum Grout Joint: 1/8"
Recycled Content: 21%
Water Absorbtion: >10%
Abrasion Resistance/PEI: 1
Scratch Hardness/MOHS: 5
Country of Origin: Spain

Backsplash: Yes
Shower Wall: Yes
Shower Floor: No
Steam Showers: Yes
Submerged Applications: No
Fireplace Surrounds: Yes
Exteriors: No

Care and Maintenance

Regular cleaning is the best way to keep Vine Street Wall Tile looking good for years to come. Clean tiles regularly with a ph neutral cleaner to prevent buildup of dirt, grease, and soap residue. After cleaning rise with clear water and wipe dry to prevent film. It is recommended that grout be sealed.