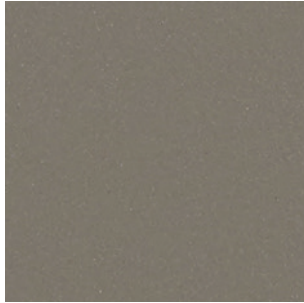


Retro Active 2.0

Porcelain Stone[®]

Available Colors - UPS and Polished



RET01 ▶ Antico Taupe UPS/PO



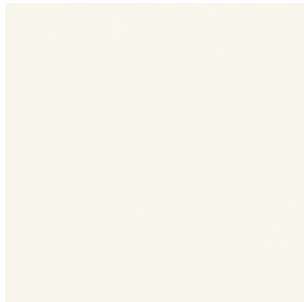
RET02 ▶ Seal Taupe UPS/PO



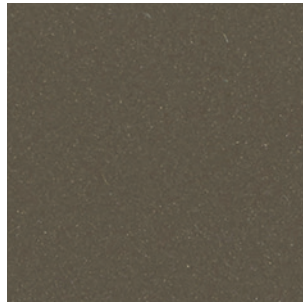
RET03 ▶ Featherstone UPS/PO



RET04 ▶ Empress White UPS/PO



RET05 ▶ Snow Blind UPS/PO



RET06 ▶ Roasted Chestnut UPS/PO



RET07 ▶ Leaden UPS/PO



RET08 ▶ Mercurial UPS/PO



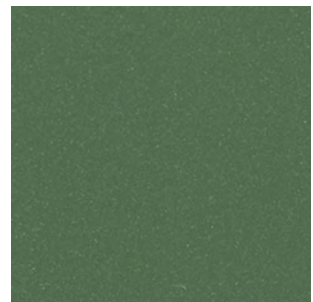
RET09 ▶ Phantom UPS/PO



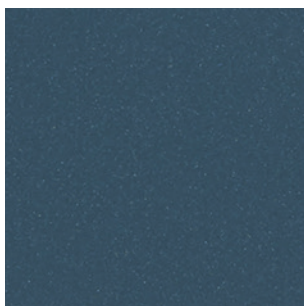
RET10 ▶ Armor UPS/PO



RET11 ▶ Gulf Breeze UPS/PO



RET12 ▶ Racing Green UPS/PO



RET13 ▶ Royal Navy UPS/PO

Features and Benefits

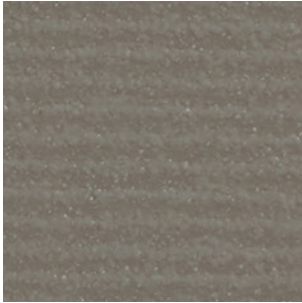
- Retro Active 2.0 includes the best-selling colors and in-demand sizes with a bold new finish option.
- 13 colors reflect a warm and cool neutral palette with exciting bright tones to enliven the mix, including super white and black.
- 8 sizes in polished and unpolished finishes and our complementary linear texture pattern pieces.
- Retro Active 2.0 pattern tiles, also in 13 colors, work in tandem or on their own to give dimension and a unique touch of texture.
- Ideal for any indoor application and exterior covered walls.
- Cross-Sheen[®] finish for easy cleaning
- Complementary 2 x 4 mosaic
- Green Squared certified and Made in the USA.



Retro Active 2.0

Porcelain Stone[®]

Available Patterns Colors



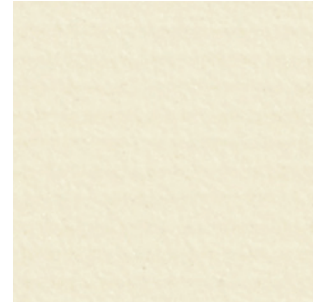
RET01 ▶ Antico Taupe PTN



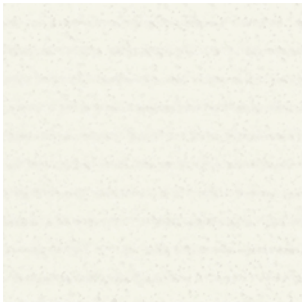
RET02 ▶ Seal Taupe PTN



RET03 ▶ Featherstone PTN



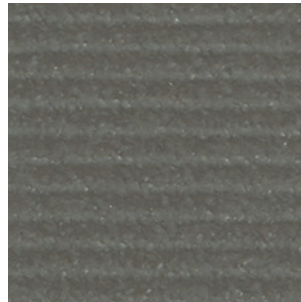
RET04 ▶ Empress White PTN



RET05 ▶ Snow Blind PTN



RET06 ▶ Roasted Chestnut PTN



RET07 ▶ Leaden PTN



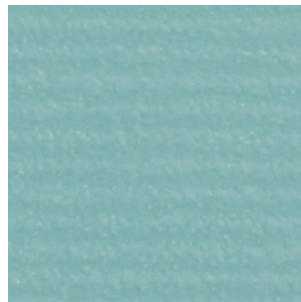
RET08 ▶ Mercurial PTN



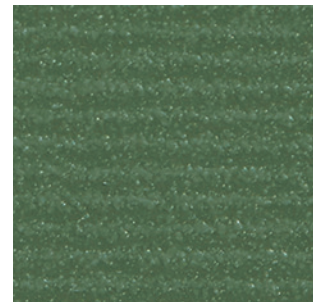
RET09 ▶ Phantom PTN



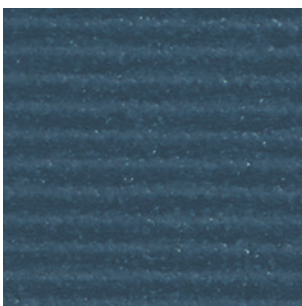
RET10 ▶ Armor PTN



RET11 ▶ Gulf Breeze PTN



RET12 ▶ Racing Green PTN



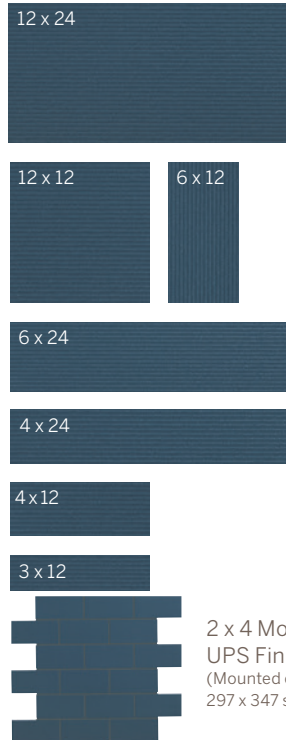
RET13 ▶ Royal Navy PTN



Retro Active 2.0

Porcelain Stone®

Sizes (Shown in RET13)



2 x 4 Mosaics
UPS Finish
(Mounted on an
297 x 347 sheet.)

Sizes & Finishes

Field Tile	Available in all colors			
Nominal (in)	Actual (in)	Thickness (in)	Grout Joint (in)	Finish
3 x 12†*	2-3/4 x 11-3/4	5/16	3/16	UPS/PO/PTN
4 x 12†*	3-3/4 x 11-3/4	5/16	3/16	UPS/PO/PTN
4 x 24†*	3-3/4 x 23-3/4	5/16	3/16	UPS/PO/PTN
6 x 12†*	5-3/4 x 11-3/4	5/16	3/16	UPS/PO/PTN
6 x 24†*	5-3/4 x 23-3/4	5/16	3/16	UPS/PO/PTN
12 x 12	11-3/4 x 11-3/4	5/16	3/16	UPS/PO/PTN
12 x 24	11-3/4 x 23-3/4	5/16	3/16	UPS/PO/PTN

* Custom cut program. Allow 2-4 weeks based on availability for delivery.

† The cut/bevel tile is cut from larger format tile and the edges are beveled to provide a factory appearance.

All field tile is calibrated (non-rectified).

Crossville recommends a minimum 3/16" grout joint..

Mosaics

Available in all colors				
Nominal (in)	Actual (in)	Thickness (in)	Grout Joint (in)	Finish
2 x 4 Mosaic	11-3/4 x 11-3/4	5/16	3/16	UPS

* Mesh mounted on 297 x 347 sheet with 3mm grout joint. Coverage area is 0.97sf.

Coordinating Trim

Nominal (mm)	Actual (in)	Thickness (in)	Grout Joint (in)	Finish
4 x 12 Single Bullnose	3-3/4 x 11-3/4	5/16	3/16	UPS/PO/PTN*
6 x 12 Cove Base	5-7/8 x 11-3/4	3/8	3/16	UPS
2 x 12 Cove Base	1-3/4 x 11-11/16	3/8	3/16	UPS
1 x 6 Inside Corner	1 x 5-7/8	NA	3/16	UPS
2 x 2 Inside Corner	1-3/4 x 1-3/4	NA	3/16	UPS
1 x 6 Outside Corner	1 x 5-7/8	NA	3/16	UPS
2 x 4 Outside Corner	1-3/4 x 3-1/2	NA	3/16	UPS



4 x 12 Bullnose*
* PTN Special Order



6 x 12 Cove Base



2 x 12 Cove Base



2 x 2 Inside Cove Base Corner



2 x 4 Outside Cove Base Corner



1 x 6 Inside & Outside Corners

Product Performance

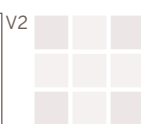
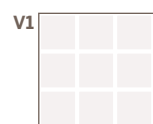
Breaking Strength	>300 lbf	ASTM C648
Bond Strength	>200 psi	ASTM C482
Chemical Resistance (UPS, PTN)	Unaffected	ASTM C650
Chemical Resistance (PO)	Unaffected	ASTM C650
Frost Resistance	Resistant	ASTM C1026
Water Absorption	<0.20%	ASTM C373
Scratch Hardness	7	Mohs Scale

Wet Dynamic Coefficient of Friction Range

UPS	0.50 - 0.60	ANSI A326.3
PO	0.31 - 0.41	ANSI A326.3
PTN	0.42 - 0.52	ANSI A326.3

Shade & Texture Index

Retro Active 2.0 has a shade variation of V1.



V1 Uniform appearance
V2 Slight Variation
V3 Moderate Variation
V4 Substantial Variation

This porcelain tile product is produced with a V1 variation. Differences among pieces from the same production run are minimal. Inspect the product upon delivery and for best results, blend tile from several cartons during installation.

Retro Active 2.0

Crossville, Inc.

PO Box 1168
Crossville, TN
38557

Phone 931.484.2110
Fax 931.456.2956
E-Mail Crossc@CrossvilleInc.com
Web CrossvilleInc.com

Application Areas

Finish	Interior Floors (dry)	Interior Walls (wet/dry)	Exterior Walls	Interior Floors (Standing water/shower floors)	Exterior/Paving	Pool/Fountain Full Lining**	Water Line Pool/Fountains
PO	✓	✓	✓			✓	✓
UPS	✓	✓	✓	Mosaics Only*		✓	✓
PTN	✓	✓	✓			✓	✓

* 4" or less in both length and width, UPS or UP mosaics

** Excludes mesh mounted mosaics. Crossville recommends face mounted or edge mounted mosaics for fully submerged applications. Contact your Crossville sales representative for more information.

NOTE: Trim applications will differ from field tile applications for the same series.

For more information on ANSI- A362.3 visit our website at <https://www.crossvilleinc.com/Resources/Tile-101/DCOF?tab=1>

Recommended Use

Retro Active 2.0 is recommended for interior floors, interior walls, countertops, exterior walls, pool waterlines and full linings† in both residential and commercial applications. Retro Active 2.0 is not recommended for exterior horizontal surfaces or exterior paving. See CrossvilleInc.com for detailed installation instructions.

† Excludes mesh mounted mosaics.

Care and Maintenance

Regular cleaning is the best way to keep Retro Active 2.0 tile looking good for years to come. Use clean, hot water (combined with a household cleaner for more aggressive cleaning). Rinse thoroughly and dry with a soft cloth to prevent water spots. No waxes or sealers are needed. More information regarding the care and maintenance of Crossville products is available at CrossvilleInc.com.

Wet area use for Retro Active 2.0 Mosaics

Crossville® produces the Retro Active 2.0 mosaics with an unpolished finish. The ANSI A326.3 wet Dynamic COF of Retro Active 2.0 is ≥ .50. Their small size ensures frequent grout joints which provides traction and drainage. Crossville cannot control situations involving incorrect installation, improper slope to the drain for elimination of standing water and poor surface cleaning.

This information is provided so that customers may make a realistic and informed decision when comparing Retro Active 2.0 to other tile products in wet area environments, such as residential/commercial bathrooms, showers, and interior pool decks.

Information listed here is subject to change. Please refer to CrossvilleInc.com for the latest, most accurate information.

Polished Tile

For polished tiles, the use of a penetrating type sealer is required prior to grouting. Grouts should be tested to determine if the grout or grout pigment will contaminate the surface of the tile and may require more than one coating of sealer before proceeding to the entire installation.

Due to the extremely white, through bodied nature of RET05 Snowblind, the polished finish is sensitive to grout staining when using contrasting colors, especially blacks and grays.

Depending on the type of grout and its color, it may take multiple coats of a penetrating sealer, with dry times in between coats, to make the surface capable of being successfully grouted without exhibiting any abnormal grout retention on the surface. It is possible that there may be no amount of sealer that can prepare the surface to receive some of the blackest grouts, it is critical that the compatibility between tile and grout be tested prior to full scale use.

We have found great results with the Flexcolor CQ (Colored Quartz) series of one-component pre-mixed and Kerapoxy CQ epoxy grout from Mapei. Because of the unique way the pigment is created, they showed excellent results, including the darkest colors, with either none or only a single coat of sealer applied prior to grouting.

Our Warranty

Crossville Inc. guarantees that its products will meet or exceed the performance specifications outlined in ANSI A137.1 and in the performance data section of the Crossville, Inc. general product catalog. For complete details check our website at CrossvilleInc.com.

Crossville® Sample Express

Visit the website to learn more:

CrossvilleInc.com/Products/Retro-Active-2-0

Loose Tile Samples

Sizes may vary depending on product series
Max. of 4 large field tile per order

Standard Shipping

FedEX Ground

CrossvilleInc.com

If you want a better idea of what Crossville tile would look like in a particular room setting, simply visit our website and click on Cross-Vision. This powerful software tool allows you to visualize different types of Crossville tile. In addition, you'll find comprehensive information about Crossville's entire portfolio of products. You can also learn about the latest styles and trends from industry experts, download detailed care and maintenance instructions for our various products, or browse electronic versions of Crossville's product brochures. So whether you need information about Crossville products or tile in general, please visit us at CrossvilleInc.com.

Living Product Challenge

Crossville is choosing to certify new products as part of a commitment to a healthy world by following the standards set for in the Living Product Challenge. Retro Active 2.0 has been awarded petals for Place, Water, and Beauty. Our newest 2.0 products - Shades 2.0 and Color Blox 2.0 - are currently in review. Please refer to CrossvilleInc.com for product information.



Trade Organizations



Environmentally Aware

