

# Multiplier

## Porcelain Mosaic

### Sizes

#### Mosaic Tile

	Nominal Size (in)	Actual Size (mm)	Thickness (mm)	Grout Joint (mm)	Finish
2" Square*	2 x 2	47.5 x 47.5	6	2.6	Gloss/Matte
2" Hex**	2 x 2	47.5 x 47.5†	6	2.6	Gloss/Matte
3/4" Penny Round***	0.75 (diameter)	19 (diameter)	6	2.0	Gloss/Matte

\* 2" Square is mounted on a 301 x 301 sheet (Coverage area 0.97263 sf)

\*\* 2" Hex is mounted on a 272 x 326 sheet (Coverage area 0.83894 sf)

\*\*\* 3/4" Penny Round is mounted on a 292 x 324 sheet (Coverage area 0.99617 sf)

† 2" Hex tile measures 47.5mm from one straight edge to the opposing parallel edge

### Product Performance

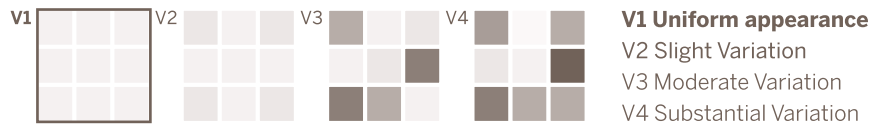
Breaking Strength	>350 lbf	ASTM C648
Chemical Resistance	Resistant	ASTM C650
Water Absorption	≤0.20%	ASTM C373
Scratch Hardness	7	Mohs Scale

### Wet Dynamic Coefficient of Friction Range

Gloss	<0.42	ANSI A326.3
Matte	<0.42	ANSI A326.3

### Shade & Texture Index

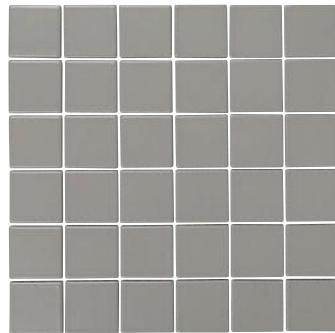
Multiplier has a shade variation of V1.



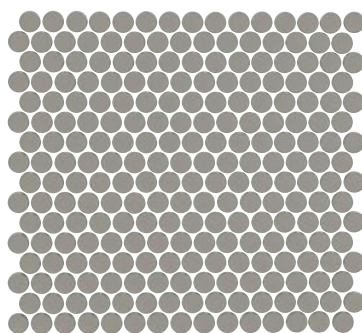
This porcelain tile product is produced with a V1 variation. Differences among pieces from the same production run are minimal. Inspect the product upon delivery and for best results, blend tile from several cartons during installation.

### Sizes

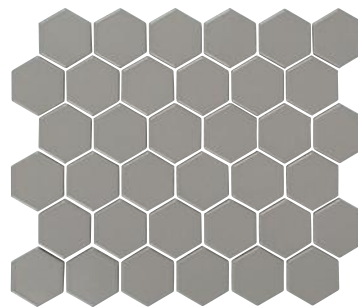
shown in MTPO2 Matte



2" Square Mosaic



3/4" Penny Round Mosaic



2" Hex Mosaic

### Application Areas

Finish	Interior Floors (dry)	Interior Walls (wet/dry)	Exterior Walls (covered)	Interior Floors (Standing water/shower floors)	Exterior/Paving	Pool/Fountain Full Lining**	Water Line Pool/Fountains
Gloss and Matte	✓	✓	✓	✓†			✓

† Note: Tile selection for wet applications (such as shower or bathroom floors) requires careful consideration of the unique nature of the design and installation. For instance, the industry standard for tile used on level interior surfaces is a dynamic coefficient of friction (DCOF) value of 0.42 or greater; however, the use of small (2" or less) mosaics with lower DCOF values may nonetheless be acceptable for projects with an increased number of grout joints, along with the presence of other surface structures that provide both traction and a means for water to drain and dissipate from the area. It is the sole responsibility of each end user to consult with a design professional to determine and select the most suitable flooring for a particular project.

\*\* Excludes mesh mounted mosaics. Crossville recommends face mounted or edge mounted mosaics for fully submerged applications. Contact your Crossville sales representative for more information.

NOTE: Trim applications will differ from field tile applications for the same series. For more information on ANSI- A362.3 visit our website at <https://www.crossvilleinc.com/Resources/Tile-101/DCOF?tab=1>

