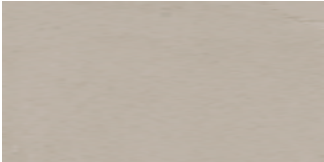


Eliane Revestimentos Ceramicos Ltda . Rua Maximiliano Gaidzinski-sala 2, N. 245
88845-000 . Cocal do Sul- SC . Brasil . +55 (048) 3447-7777 . www.eliane.com

Product:	HOMESTEAD BEIGE 30X60 N/A	Production Process:	Wet ceramic process
Code:	Bla	Work Size (W):	302.3 x 601.2 mm 11-7/8 in x 23-5/8 in
Class:	Porcelain tile	Nominal Size (N):	30x60 cm 12x24
Typology:	V2	Thickness (Ew):	7,5 mm
Shade:	3 mm	Covering Area:	17.60 sq.ft./box
Grout:	No	Pieces per box:	9
Rectified:		Surface:	GL (Glazed)



	CHARACTERISTICS		TESTING METHOD	SPECIFICATION		RESULTS
USAGE RECOMMENDATION	FIR	Indoor dry residential floors	Manufacturer's recommendation	According to the manufacturer's criteria		FLC FWI WRC WFA
	FLC	Indoor light commercial floors, including the areas FIR				
	FMC	Indoor medium commercial floors, including the areas FLC and FIR				
	FHC	Indoor heavy commercial floors, including the areas FMC, FLC, FIR				
	FFO	Flat outdoor floors				
	FRO	Outdoor inclines and ramps (maximum slope of 8.33%)				
	WID	Indoor dry residential and commercial walls				
	FWI	Indoor wet residential and commercial floors				
	WRC	Indoor and outdoor, wet or dry, residential and commercial walls, including the areas WID. For regions reaching below freezing temperatures, non frost resistant tiles are indoor only.				
	WWS	Swimming pool interior walls, including the areas WRC and WID				
	WFA	External facades, including the areas WRC and WID				
PHYSICAL PROPERTIES	Frost Resistance		ASTM C1026-13	ANSI A 137.1:	To declare	Yes
	Mohs hardness		C1895-20		To declare	8
	Breaking Strength		ASTM C648-04	ANSI A 137.1:	≥ 275	≥ 275
	Water Absorption		ASTM C373-16	ANSI A 137.1:	> 0,0 / ≤ 0,5	≤ 0,5
DYNAMIC FRICTION COEFFICIENT - DCOF	Wet Dynamic Friction Coefficient		ANSI A326-6	ANSI A 137.1:	To declare	≥ 0,42

CHEMICAL PROPERTIES	CHARACTERISTICS	TESTING METHOD	SPECIFICATION		RESULTS
	Stain Resistance	ASTM C1378-04	ANSI A 137.1:	Class A - E	Class A
	Chemical Resistance	ASTM C650-04	ANSI A 137.1:	Class A - E	Class A

Recycled content: 44.4% pre-consumer

Note:

Verify if the product is adequate for the intended usage.

Sand may cause scratches in any type of covering (stone, wood, vinyl, or ceramic). For this reason, ceramic tiles are not warranted against scratches, especially concerning products with glossy surfaces. It is recommended special care during installation and use. In residential areas, we recommend protecting the base of furniture and appliances.

Negligence towards the intended use specified in this report, abnormal environmental action, climate factors, etc, is going to reduce the product's useful life, which may be shorter than the period declared by the manufacturer.

Tiles cleaning: Tiles with metallic and special glass finishes should be cleaned only with a cloth soaked in water and neutral detergent. Do not use acidic cleaning products or abrasive sponges that may damage the tile's surface.

On outdoor areas of regions where there is an incidence of snow, the frost resistance should always be analyzed. Only porcelain les are indicated for outdoors use in areas with a temperature equal to or less than 0°C / 32°F.

DATE: 01/18/23

Ceramic Technology Dept