



QUARTER ROUND TRIM THE 8^{FT} JOLLY



The Questech JOLLY is a great way to finish any glass, metal or ceramic tile project and can be installed 4 ways as a cap, liner, corner, or trim finishing piece. Perfect for Designers, Contractors, Builders, and DIY home projects because it is the most versatile of the ceramic molding liners that install with tile.



SL708-23
Bright White
Polished

SL708-42
Bright White
Matte



SL708-28
Black
Polished

SL708-41
Black
Matte



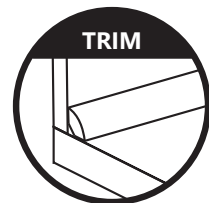
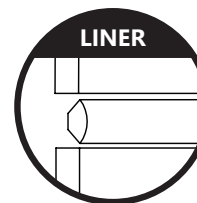
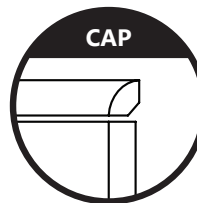
SL708-62
Cool Gray
Polished

SL708-52
Cool Gray
Matte

OVERVIEW

- Seamless Flexible Trim in an 8^{FT} Length
- Low-Cost Easy Installation
- Cuts with a Wet Saw or a Miter Saw
- Permanently Sealed
- Perfect for Wet Wall Applications
- Flexible Material

4 WAYS TO INSTALL



PROTECTED BY



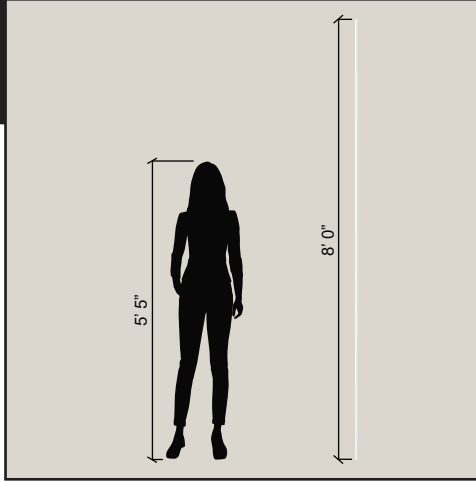
THE FINISHING TOUCH

WWW.QUESTECH.COM
INFO@QUESTECH.COM
P: 802.773.1228

SEAMLESS & FLEXIBLE

8^{FT} LENGTH

VIDEO INFO



INTRODUCING THE NEW 8^{FT} QUARTER ROUND JOLLY FIXTURE

\$60.⁰⁰ ITEM# JOLLY-FIXTURE

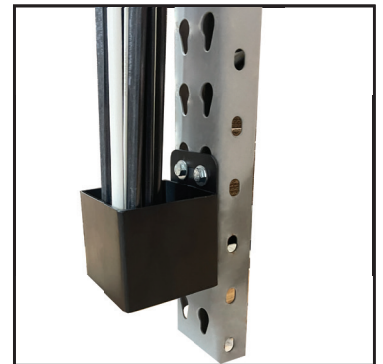
Introducing our 8^{FT} Quarter Round Trim Fixture. Designed to hold up to 36 pieces of 8^{FT} trim, it's crafted from durable, powder-coated metal for protection. Its sleek design allows for wall or shelving display installation, offering a stylish solution for showcasing your 8^{FT} Jolly Trim Collection.



Wall Mount Hardware
(4 Units Included)



Shelving Mount Hardware
(4 Units Included)



THE JOLLY SAMPLE RING

\$10.⁰⁰ ITEM# 8FT-JOLLY-RING

The Jolly Sample Ring set displays the full suite of the new 8^{FT} Jolly quarter round trim/liner piece's colors and finishes - all in one place. This sample ring allows your customers to enjoy the look and feel of this unique product.