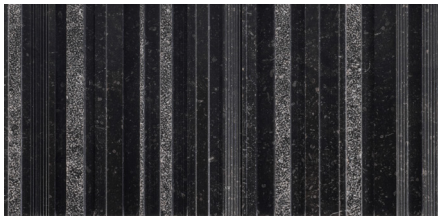


CRAFTSMAN STRIPE

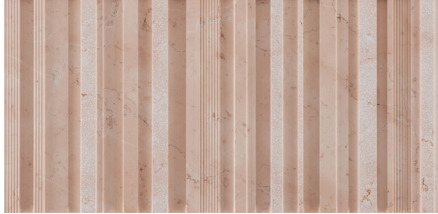
A captivating dimensional tile, Craftsman Stripe creates a contemporary design with the character of handcrafted artistry. Carved stripes in varying heights, widths, and textures are effortlessly combined, composing a textured tapestry of natural stone. Craftsman Stripe is stocked as a 6"x12" tile in Belgian Bluestone limestone, Rosa Perlino limestone, Sabbia limestone, or Bianco Carrara marble.



CRAFTSMAN STRIPE



Belgian Bluestone



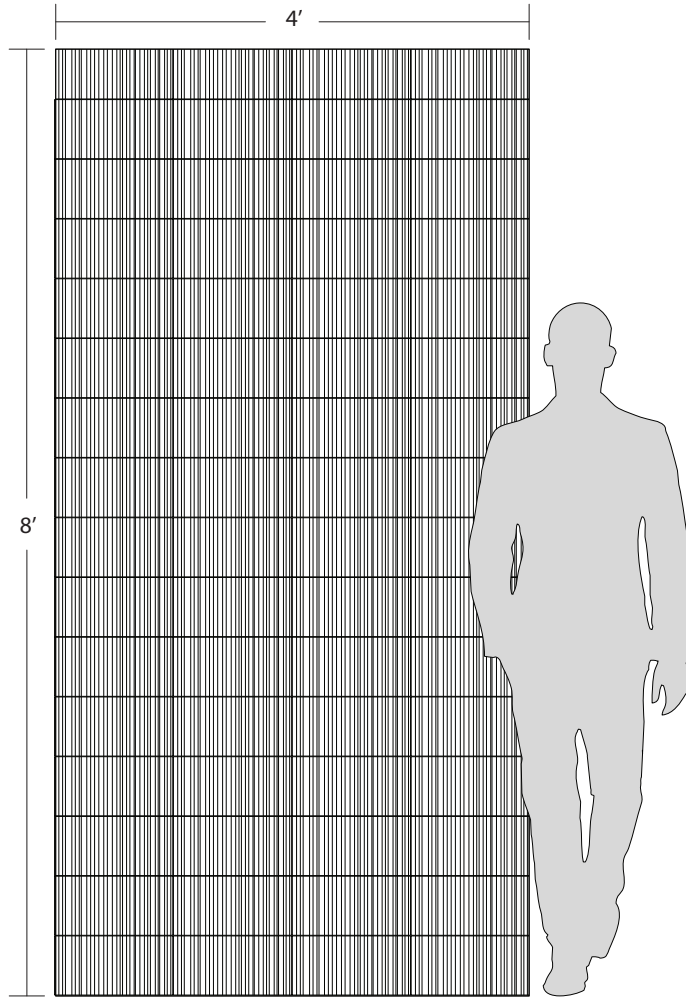
Rosa Perlino



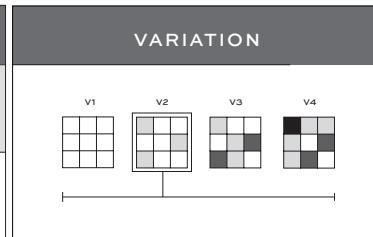
Bianco Carrara



Sabbia



APPLICATIONS								
INTERIOR FLOOR	INTERIOR WALL	SHOWER WALL	SHOWER FLOOR	EXTERIOR FLOOR	EXTERIOR WALL	POOL/ FOUNTAIN	COUNTER TOP	FIREPLACE SURROUND
No	All	Yes, including steam ¹	No	No	Yes, non-freeze thaw	No	No	Yes



TAILORED TO CUSTOMIZATION
CARPET CUTTING
FIELD
FRESH
MOSAIC
SADDLE
VANITY TOP
WATERJET

INSTALLATION/MAINTENANCE										
SETTING MATERIAL	GROUT	GROUT JOINT	MEMBRANE	CAULK	SEALER	CLEANER	INSTALLATION INSTRUCTIONS	LAYOUT	DRY LAYOUT	QR CODE
Ardex X77 White Microtec Fiber Reinforced Mortar ²	Ardex FG-C Microtec Unsanded ³	1/16" minimum	Ardex 8 + 9	Ardex SX	AquaMix Sealers Choice Gold	AquaMix Concentrated Cleaner	TCNA Handbook	Stacked Joint Required	Recommended	

AVAILABLE SIZES
6" x 12" x 7/16"
Projection: 1/4"
Textured
Stone Field Dimensional

NOTES

¹Showers: Product MUST be installed in accordance with current TCNA Handbook Stone Methods. White mortar is recommended for natural stone.

²Alternate setting material - Belgian Bluestone & Bianco Carrara: Ardex X5 White Medium Bed Mortar or Ardex 100% Solids Epoxy Adhesive White | Sabbia & Rosa Perlino: Ardex N23 White Microtec Rapid Set or Mapei Granirapid White 2-part System

³Alternate grout - Mapei Keracolor Unsanded or Ardex FL Rapid Set Sanded

Tech Notes: Seal and utilize a grout release prior to grouting. Pattern is asymmetrical, maintain orientation of pieces for continuity of pattern. Installation is wall only with a straight joint and bag grout.