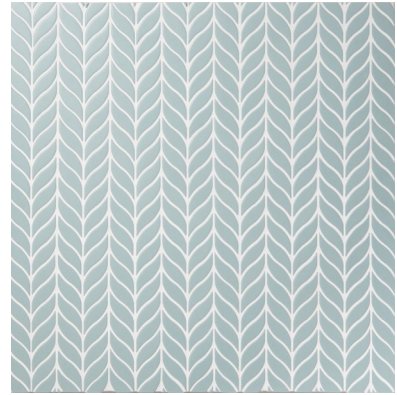
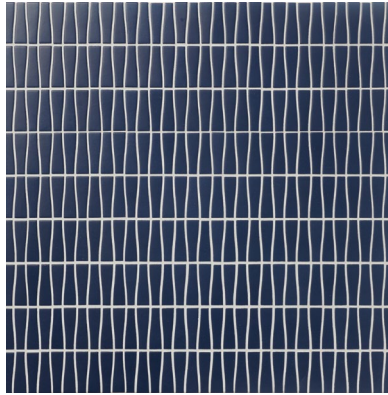


Thank you for considering Hustle tile! We want you to love your tile for years to come.  
This guide will help you understand what to expect, avoid common mistakes, and  
**SET YOU UP FOR SUCCESS!**



## SAMPLING

If you're looking at Hustle, we **highly recommend ordering samples** in the shape and color you're considering.

### GET HAPPY RESULTS.

We want you to love your tile for years to come! Every Hustle color has unique personality. Each color will reflect slightly different hues depending on the size and shape of the tile, as well as surrounding materials and light sources (natural or artificial). Ordering samples in the actual size you're considering is the best way to have confidence in what you've selected!

### HOW DO I DO THIS?

It's easy! All of our authorized dealers have samples on hand, or they can order it from us for you. From there, we recommend that you take it home and look at it in your environment, in your lighting conditions and against your other finishes. Now you're ready to order with confidence!

## ORDERING

**MEASURE TWICE, ORDER ONCE.**

**1**

We recommend ordering a minimum of 15% overage (sometimes more).

**2**

Ordering overage is necessary to accommodate cuts, a small percentage of breakage to be expected in transit, and to avoid add-on orders or delays to your installation.

**3**

Add-on orders are challenging due to the inherent variation from lot to lot. If you have to order more at a later date, it could vary slightly from your original order.

“

HUSTLE'S RECYCLED  
GLASS BODY FUSES  
HIGH DURABILITY WITH  
BOUNDLESS DESIGN.  
TIMELESS COLORS  
ARE BALANCED WITH  
FEARLESS HUES IN  
TRADITIONAL SHAPES  
AND MODERN FORMS.



## 350+ SHOWROOMS NATIONWIDE!

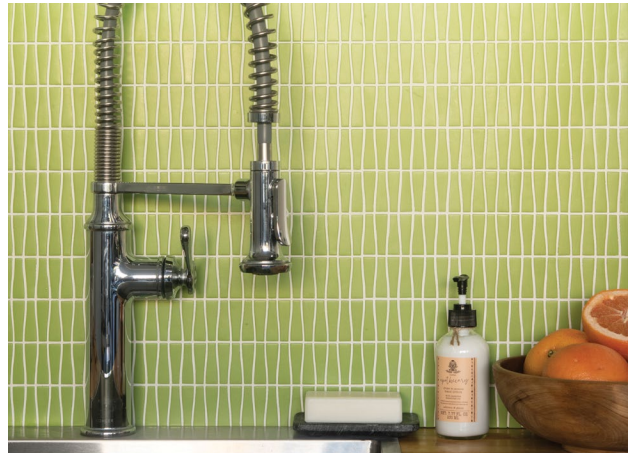
Our products are sold exclusively through our network of authorized dealers.  
To find the dealer nearest you, scan the QR code or visit [sonomatilemakers.com](http://sonomatilemakers.com).

## WHAT TO EXPECT

**Hustle is a mesh-backed recycled glass tile.** The recycled content will produce natural variation in color, shade and surface texture.

Minor pits, color flecks or wrinkles are considered an inherent characteristic of this product. Variation will occur from lot to lot, so final order may vary slightly from samples.

**Make sure your installer reads our installation instructions thoroughly to achieve the best look.**



## IT'S HERE! NOW WHAT?

When your order arrives, please be aware—you are responsible for determining the acceptability of the product prior to installation. Sonoma Tilemakers is in no way responsible for the installation of our tiles or thereafter.

We recommend:

1. Inspect all boxes for damage upon arrival.
2. Inspect all sheets in all boxes.
3. Double check you have enough tile to complete the project with some leftover.
4. If you need additional tile, do not start the installation until you have it.
5. Make sure you have seen and approved your tile BEFORE it is installed.
7. Love your new tile!

We ALWAYS recommend professional installation by an experienced installer who uses TCNA guidelines.

## TIPS FOR SUCCESS

1. **Make sure installer reads our installation instructions carefully and is using only recommended substrates, thin-sets and grouts exactly as directed by the manufacturer.**
2. **Watch our video on *How To Cut Hustle* for the cleanest cuts.**  
VISIT: [sonomatilemakers.com/tipsforcuttinghustle](http://sonomatilemakers.com/tipsforcuttinghustle)

## BASICS OF CARE

- For everyday cleaning use a mild dishwashing soap with water or a pH neutral leaner made for glass.
- Tubs and showers: DESCUM Soap Scum Remover & Renovator.
- Avoid harsh chemicals.
- Use a non-abrasive cloth/sponge to avoid scratching.
- Hustle does not need to be sealed. Check with grout manufacturer for sealing recommendations.
- **Read complete cleaning instructions before purchase.** VISIT: [sonomatilemakers.com/hustle-techinfo](http://sonomatilemakers.com/hustle-techinfo)

