



IMPROVE YOUR  
PACKAGING PROCESS  
**WITH AUTOMATED  
BAGGING SOLUTIONS.**



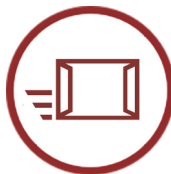
**Experts in Automated Poly Bagging Solutions**

**We Protect, Preserve and Inspyre**



**IMPROVE YOUR PACKAGING PROCESSES**

Our team of experts conduct on-site evaluations identifying ways to reduce costs, increase throughput, and streamline operations.



**Tailor made integration**

- Protect what matters
- Ideal setup for your workplace



**Maximize output and productivity**

- Reduce operational costs
- Simplify maintenance
- Decrease labor requirements



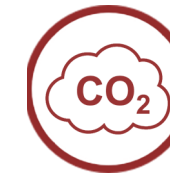
**Provide optimal working conditions**

- Ergonomic sound level
- Enables social distancing
- Easy loading processes
- User friendly HMI's



**ACHIEVE YOUR SUSTAINABILITY GOALS**

Packing with sharp bags protects your products without adding excess volume and weight to you package.



**CO2 saving**

- Fit for purpose - prevents damages and returns
- Small weight and volume - Reduces CO2 emission during transport and production



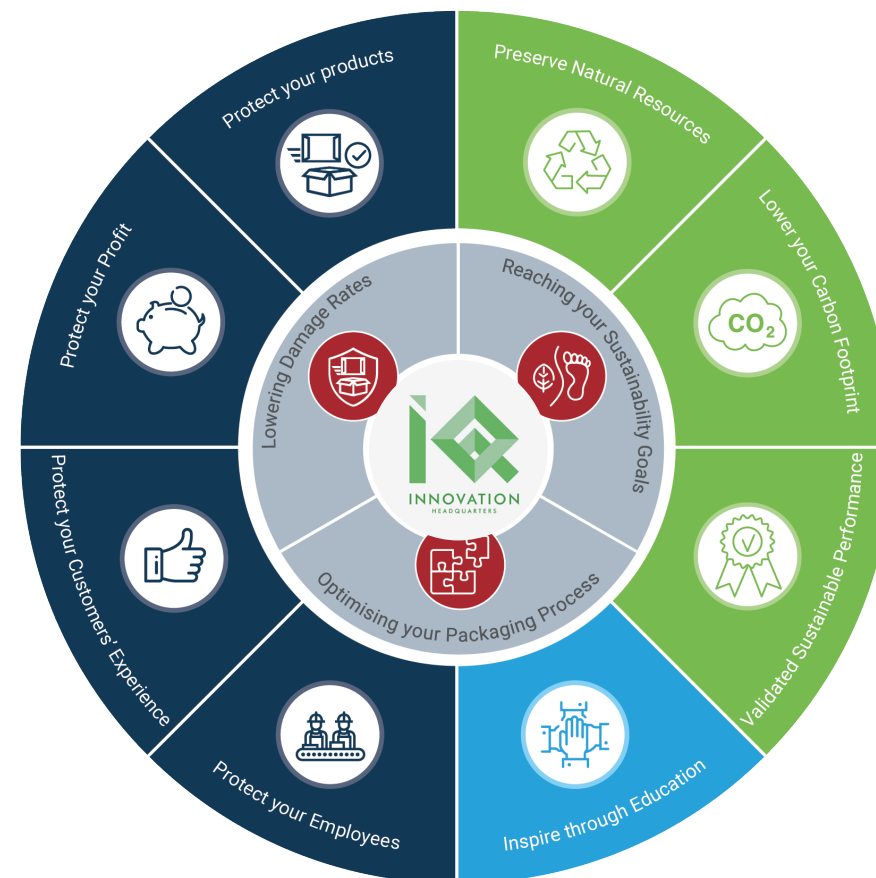
**100% recyclable**

- Standard PE bags are 100% recyclable
- Mailers available with 30% recycled content.
- General Purpose LDPE bags with up to 30% recycled content
- Sharp bags are easier to recycle as they replace the need for a paper label



**Reuse**

- Mailers are suitable as return package with use of a reclosing tape.





## TOP QUALITY POLY BAGS

Our custom bags are produced to your exact specifications. We can also develop artwork for customized printing.

- Custom bags**  
 Made for just for you! Our custom bags are made to your exact specifications – film type, size, even custom artwork and printing.
- Blanket orders**  
 Take the headache out of inventory. Let our team monitor your usage and release dates, so you focus on growing your business.
- Lower inventory, material, operating expenses and labor costs**  
 Our experts will recommend materials and features that improve the efficiency and quality of your packaging operation.
- Guarantee top packaging performance**  
 We extrude our own films using the highest grade resins available to ensure consistency and guarantee the highest quality bags to our customers.





## RECOMMENDED E-Z BAGS BY INDUSTRY



Industry	LDPE Mailer	General Purpose LDPE	Xtreme Poly (XP)	Ultra	Polypropylene	SPHD High Density Polyethylene
E-Commerce & PBM	✓					
Injection Molding		✓	✓	✓		✓
Medical		✓	✓	✓		✓
Parts		✓	✓	✓		✓
Retail		✓	✓	✓	✓	


## INNOVATIVE BAGGING MACHINES

We've engineered the most innovative machinery available. Our team of experts will work with you to understand your process requirements and identify the ideal machines to ensure your operation is as efficient as possible.

- 
**Predictive Maintenance**  
 Select Sharp machines can detect wear in their components, alerting operators and maintenance staff, so parts can be ordered and replacement scheduled before a breakdown causes unplanned downtime.
- 
**Intuitive Operation**  
 Smartphone-inspired HMIs, easy bag threading, and simple adjustments mean less time spent in training, less downtime swapping out bags, and more employees are able to operate the machine.
- 
**Cost Savings**  
 Sharp machines provide significant savings, both in labor and materials. Thermal printers eliminate the cost of adhesive labels, flexible packaging reduces shipping costs, and off-the-shelf parts across our entire line means that parts are readily available and inexpensive.
- 
**Simple Compatibility**  
 Our machines interface with most WMS systems, without the need for special programming or expensive workarounds. Plus, our machines interface directly with dozens of infeeds and conveyors, for easy implementation into your existing lines.

## WORLD CLASS SUPPORT AND SERVICE

To ensure you're getting the most out of your packaging, Pregis offers unrivaled consultative and technical services and industry leading training support.

- 
**Consultative Services**
  - Packaging optimized for any network – SFS, freight, ground, air, international
  - Testing center ensures packaging is Post Office, DPD, DHL ready
  - Specialized sales teams understand the unique challenges of your industry
- 
**Technical Service**
  - Proactively monitor packaging systems and schedule routine maintenance
  - Highly skilled, local field technicians available for immediate needs
- 
**Training Support**
  - Standard or custom guides, placards and videos
  - On-site employee training and educational seminars



# MAX-PRO 24 - The widest vertical bagger on the market

Redesigned to expand applications and increase your productivity



## MAX-PRO 24 Continuous Bagging System

**Sharp E-Z Bags® feed through the machine, are opened, filled with product, then sealed**

### Improve Productivity and Throughput

- Inline thermal printing with optional label side up exit conveyance
- Passthrough size adjusts automatically through HMI—4X faster!
- Semi-automated and fully automated integrations available

### Maxwell Technology

- **Predictive Maintenance**—Cutting edge diagnostics monitor individual machine components, notifying technicians of potential problems and allowing replacement parts to be ordered without downtime
- **Access data anywhere**—HMI, printer, and PLC can be networked and accessed remotely
- Use remote label printing, production reporting, and SCADA (supervisory control and data acquisition) control

### Intuitive HMI

- Networkable HMI responds like a smartphone—faster and with intuitive icons
- The machine can automatically change the passthrough with the touch of a button
- Save job settings in HMI for easy access
- Design and store labels directly on HMI

### Improved Design

- Compact footprint, under 101 cm wide
- Simple, quick loading and operation
- HMI conveniently located on either side of machine

### Packer Ergonomics and Safety

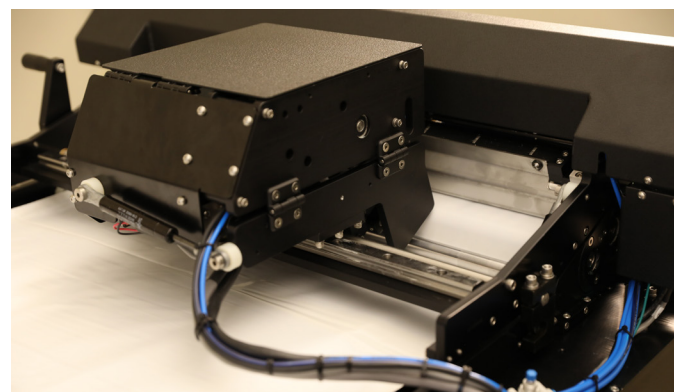
- Simple, one-person frame and loading height adjustment
- Fully electronic, adjustable height keeps the machine level while tailoring it to your operation
- Low force jaw and soft actuators cannot hurt the operator eliminating need for guarding

### Faster Printing, Reduce Costs

- Zebra thermal printers permit direct printing onto the package with barcodes, graphics, and alphanumeric fonts
- Movable printing head sets to precise positions, eliminating queuing, reducing material cost and scrap

### Easy Maintenance

- New design utilizes fewer components, decreasing downtime and increasing ease of maintenance
- Off-the-shelf, nonproprietary parts can be purchased at most MRO stores
- The service manual is integrated into the HMI for convenient reference
- HMI has color touchscreen display with troubleshooting guidance, exploded view drawings, manufacturer part numbers, and html files with hyperlinks for more help



# MAX-PRO 18

Redesigned from the ground up for increased productivity and easier operation



## MAX-PRO 18 Continuous Bagging System

**Sharp's E-Z Bags® feed through the machine, are opened, filled with product, then sealed**

- **Predictive Maintenance**—Advanced diagnostics monitor internal components, alerting technicians to potential wear before a failure occurs
- **Technology advancements** include an improved, easier to use HMI inspired by smartphones
- **Faster with huge productivity gains**
  - Tool free jaw changeover adjusts bag size with the touch of a button
  - Easier bag changeover and threading saves time and reduces training requirements
- **Cost Saving**
  - Off-the-shelf, nonproprietary parts
  - Longer lasting, constantly heated sealing mechanism
- **Handles longer and wider packages up to 45 x 20 cm**
- **Simpler Design**
  - Includes fewer components for increased reliability
  - Easier service access for faster maintenance
- **Smaller Footprint** fits into existing modular systems and takes up less floor space

### Cutting Edge Technology

- Advanced diagnostics monitor individual machine components, notifying technicians of any potential problems and allowing replacement parts to be ordered before a failure occurs
- Networkable HMI responds like a smartphone: faster and more intuitive, with easy to understand icons
- Passthrough size now adjustable via the HMI, with no tools required

### More Versatile Operation

- Simplified bag threading system allows even novice operators to load new bags easily
- Sharp MAX-PRO 18 accommodates 18" wide bags with an 8" passthrough depth
- Save job settings in HMI for easy access
- Store label designs and even create labels directly on the HMI
- Compatible with both rolls and boxes of bags



### Faster Printing

- Incorporating Zebra thermal printers permits direct printing onto the package for bar codes, graphics, and alphanumeric fonts
- Movable printing head sets to precise positions, eliminating queuing and reducing material cost and scrap
- Decrease thermal ribbon usage as much as 90% with reduced spacing between impressions, printing with alternative registrations, and adjusting impression placements to maximize ribbon usage

### Access Data Anywhere

- HMI, printer, and PLC can be networked, so they can be accessed at any time from almost anywhere
- Use remote label printing, production reporting, and SCADA (supervisory control and data acquisition) control

### Easy Maintenance

- New design utilizes fewer components, decreasing downtime and increasing ease of maintenance
- Improved error reporting pinpoints problems for hassle free troubleshooting
- Off-the-shelf, nonproprietary parts can be purchased at most MRO stores
- The color touchscreen display provides troubleshooting guidance with exploded view drawings, manufacturer and part numbers, and html help files with hyperlinks to explain any term



# MAX 12™

Industrial system frequently used for full automation solutions



## MAX 12™ Continuous Roll Bagging System

Sharp's E-Z Bags® feed through the machine, are opened, filled with product, then sealed

- **Technology advancements** include HMI, a networkable touchscreen.
- **Faster with huge productivity gains**
  - Printing is 50% faster than other printers.
  - Reduced cycle times with the lightweight aluminum jaw.
  - Quick realignment with heavy duty drive fingers.
- **Cost Saving**
  - No queuing reduces scrap and material cost with moveable printing head.
  - Thermal ribbon usage reduced as much as 90% with simple adjustments.
  - Long lasting, constantly heated sealing mechanism
  - Off-the-shelf parts.
- **Troubleshoot quickly on the PC based system** with manuals and video clips on the HMI.

### Faster Printing

- At least 50% faster than printers used by other manufacturers, increasing throughput dramatically.
- Set moveable printing head to precise positions, based on package size, to print bags in order, eliminating queuing and reducing scrap and material cost.
- Reduce thermal ribbon usage as much as 90% with reduced spacing between impressions, printing with alternative registrations, and adjusting impression placements to increase ribbon usage

### Cutting Edge Technology

- Touchscreen is a 30.7 cm TFT (thin film transistor) technology, including a PC with Windows®.
- bels on the PC, save, then add it to a particular job, so the label format is saved as part of the job.
- Includes a high speed counter, pulse train output and network capabilities.

### Versatility in loading

- Entire machine moves up or down, adjusting to a wide range of heights.
- 90° rotation capabilities for horizontal loading for heavy or stuffable products.



### More Efficient Operation

- Heavy duty drive fingers don't bend even with tugging at bags, so no need to realign.
- The proximity sensor is inside the jaw, protecting the magnet field and improving operation in dirty environments.
- The constantly heated sealing mechanism offers a longer life than impulse mechanisms.
- Controls for the printer are viewed directly on the bagger HMI, so it's not necessary to manage multiple monitors or displays for the bagger and printing system.
- Control, recall stored labels or even create labels directly on the single HMI.

### Access Data Anywhere

- HMI, printer, and PLC can be networked, so they can be accessed at any time from almost anywhere.
- Use remote label printing, production reporting, and SCADA (supervisory control and data acquisition) control.

### Easy Maintenance

- Off-the-shelf, nonproprietary parts.
- The color touchscreen display provides troubleshooting guidance with exploded view drawings, manufacturer and part numbers, and html help files with hyperlinks to explain any term.

# SX™

Our most versatile and flexible solution



## SX™ Continuous Roll Bagging System

- **Sharp E-Z Bags® feed through the machine, are labeled or addressed, then opened automatically.** Simply insert the product, and then the bag is sealed.
- **Runs bags** 5 to 27 cm wide and 10 to 81 cm long.
- **Technology advancements include** 10.9 cm wide color touchscreen with Allen-Bradley Micro850 PLC.
- **Variable speed fan** allows the operator to adjust the bag opening to accommodate various sizes and shapes of product, from 0% to 150% of the fan speed of the original SX.



Touchscreen Controls



4" Wide Print Head

### More Efficient Printing

- Prints unique, variable information on the first bag out.
- Can print long and short production runs for a variety of projects.
- 10.1 cm wide print head for a larger print area.
- Ribbon changes are up to 50% faster.
- Electronic ribbon out sensor prevents wasted ribbon. The viewing window allows you to see the amount of ribbon remaining on the roll.



All Electric Design

### Easier to Use

- All electric design—just plug in and use the SX™ anywhere.
- Optional adjustable load shelf for easy loading for bulky or heavy products.
- Cross flow fan channels high volume, low pressure ducted air for precise bag opening—no compressed air required.
- Auto-Rol™ tension system maintains consistent web flow, eliminates breakage.
- Clamshell design makes it easier to thread the bags.
- Bag changes are fast with touchscreen inputs.



Variable Speed Fan

### Maintenance Is Simple

- Off-the-shelf parts result in significant savings on replacement parts.
- Fewer moving parts for less maintenance
- Plug and play wired components for easy changing and ordering.
- Teflon tape is easier and less expensive to replace.
- Self diagnostics identify and correct problems quickly.
- On-board PLC for greater reliability in machine function.



Using Pregis' Sharp bagging systems has many proven benefits

**HOW IMPLEMENTING SHARP BAGGING SYSTEMS CAN INCREASE SHIPPING EFFICIENCY**

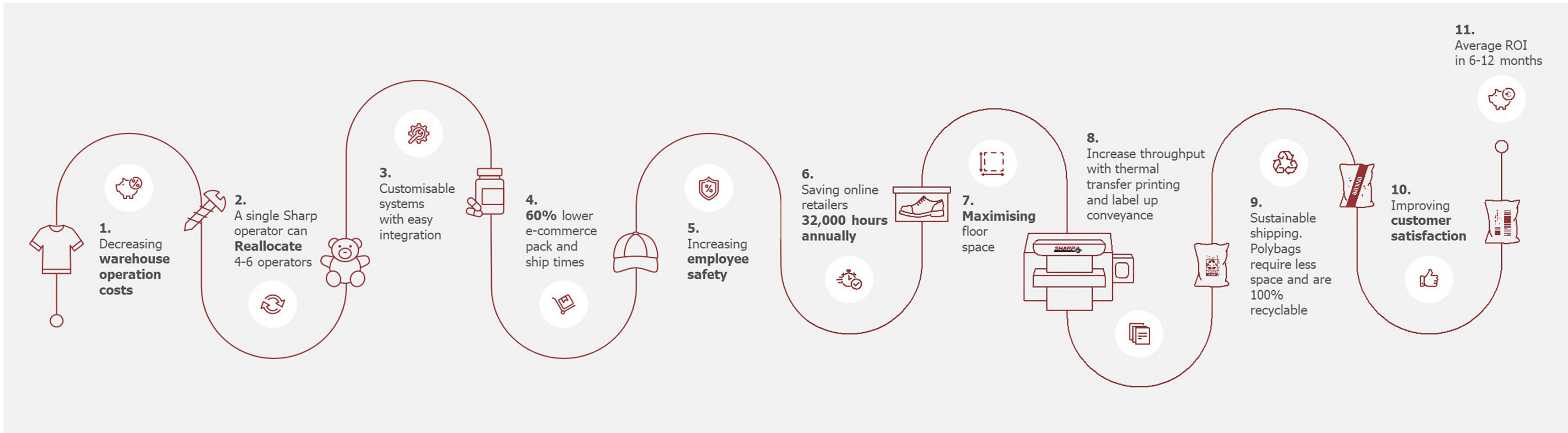


For DCs, low damages and high throughput are the name of the game. Shipping products efficiently from distribution and fulfillment centers for customer delivery is what every company strives for.



**PREGIS IQ: SOLVING BUSINESS CHALLENGES**

At the Pregis IQ, our Innovation Headquarters, our experts focus on the bigger picture and analyze your product needs, the complexities of your supply chain, your distribution environment and sustainability goals before making a recommendation. This consultative approach delivers validated package solutions and processes that prevent damage, control total costs of your packaging operation and minimized the impact on the environment.





# The Pregis Purpose

We Protect, Preserve and Inspyre

We are a leading manufacturer of **innovative packaging solutions** and **protective products**.

We ensure that we not only **PROTECT** our customers' products but their bottom line.

We **PRESERVE** the environment by creating packaging for the circular economy, which means we create the highest quality products while using less raw materials and maximizing recycled content.

And as a company, Pregis strives to **INSPYRE** our employees, customers, and consumers to think more sustainably and give back to our communities.

## Contact us today!

00800 8888 8840

[customer.care@pregis.com](mailto:customer.care@pregis.com)

[WWW.PregisEU.COM](http://WWW.PregisEU.COM)

