



Tower Carts

GCD_{xx} / GCR_{xx}

Parts List

Hestan Commercial Corporation

3375 E. La Palma Ave.

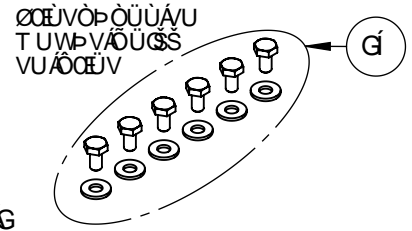
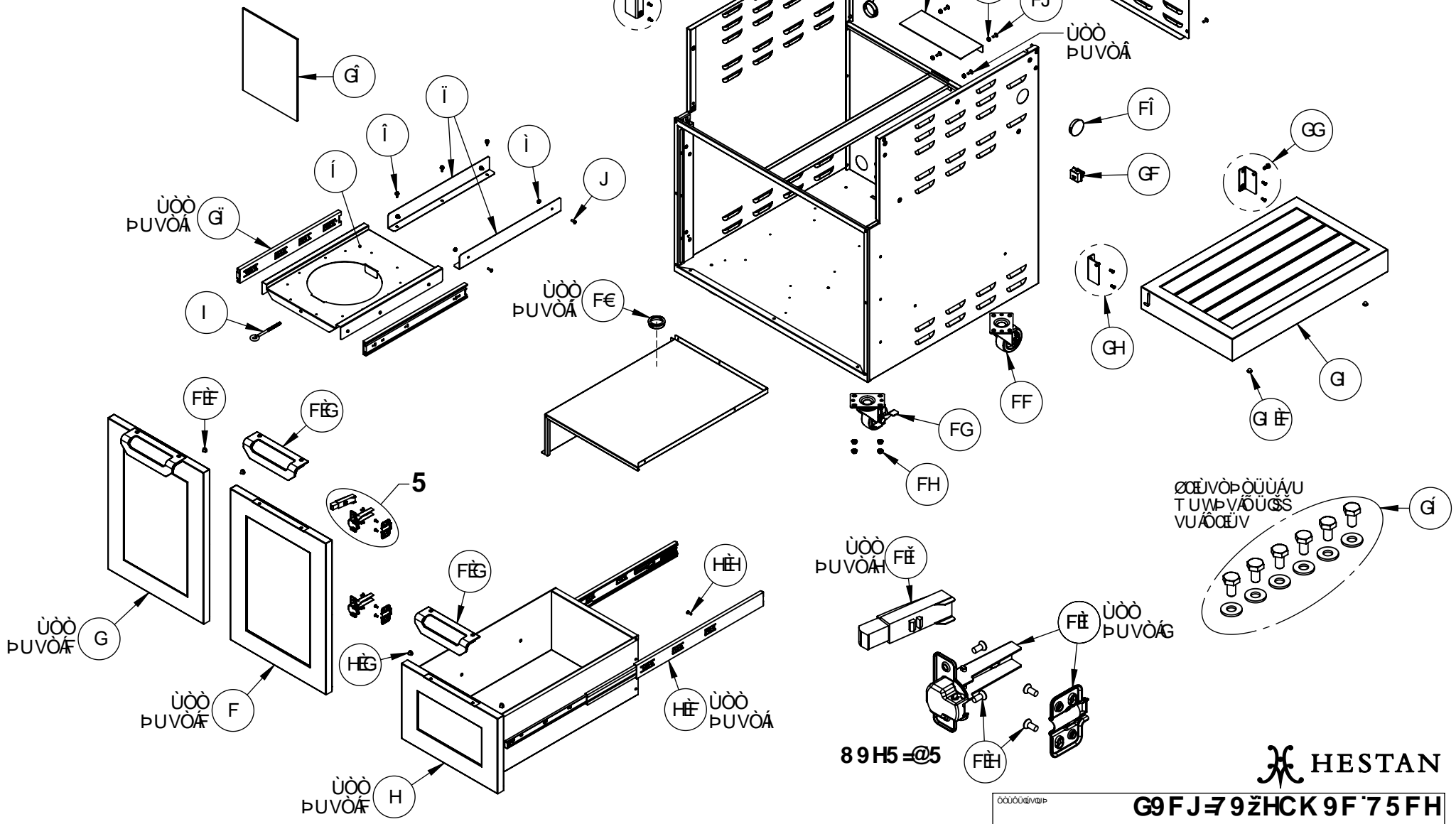
Anaheim, CA 92806

(888) 905-7463

RETAIN THIS FOR FUTURE REFERENCE

Last Revised: Aug. 4, 2021

REPLACEMENT PARTS - HESTAN TOWER CARTS	
APPLICABLE MODEL NUMBERS	DESCRIPTION
GCD30	DOUBLE DOOR CART, 30"
GCD36	DOUBLE DOOR CART, 36"
GCR30	DOUBLE DOOR & DRAWER CART, 30"
GCR36	DOUBLE DOOR & DRAWER CART, 36"
GCR42	DOUBLE DOOR & DRAWER CART, 42"



HESTAN

G9FJ79ZHCK9F75FH

; 7 LLL!G9FJ79



REPLACEMENT PARTS - HESTAN TOWER CARTS

Hestan Commercial Corp. | (888) 905-7463

All warranty and non-warranty repairs should be performed by qualified service personnel. To locate an authorized service agent, contact your Hestan dealer, local representative, or the manufacturer. Before you call, please have the model number and serial number/date code information ready. This is located on a sticker on an inside wall of the cart.

ITEM	PART NO.	DESCRIPTION	QTY				
			GCD30	GCD36	GCR30	GCR36	GCR42
1	*009162	SERVICE, ASSY., DOOR, RH, TOWER CART, GRILL, MARQUISE, 30"	1	-	-	-	-
	*009225	SERVICE, ASSY., DOOR, RH, TOWER CART, GRILL, MARQUISE, 36"	-	1	-	-	-
1.1	011691	SERVICE, BUMPER, PLASTIC, .50 DIAM. X 0.11 H, PKG 4	1	1	-	-	-
1.2	011760	SERVICE, HANDLE w/ SCREWS, CABINET	2	2	3	3	3
1.3	011702	SERVICE, MS, 8-32 X .375, PH, FLT, SS, PKG 8	1	1	-	-	-
1.4	007869	SERVICE, ASSY. HINGE w/ SCREWS, CONCEALED	2	2	-	-	-
1.5	007872	DAMPER, CLIP-TOP HINGE (SEE NOTE 3)	2	2	-	-	-
2	*009180	SERVICE, ASSY., DOOR, LH, TOWER CART, GRILL, MARQUISE, 30"	1	-	1	-	-
	*009230	SERVICE, ASSY., DOOR, LH, TOWER CART, GRILL, MARQUISE, 36"	-	1	-	1	-
	*009231	SERVICE, ASSY., DOOR, LH, TOWER CART, GRILL, MARQUISE, 42"	-	-	-	-	1
3	*011728	SERVICE, ASSY., DRAWER, TOWER CART, MARQUISE, 30"	-	-	2	-	-
	*011729	SERVICE, ASSY., DRAWER, TOWER CART, MARQUISE, 36"	-	-	-	2	-
	*011730	SERVICE, ASSY., DRAWER, TOWER CART, MARQUISE, 42"	-	-	-	-	2
3.1	037718	SERVICE, SLIDE, FULL EXT., 20", SOFT-CLOSE (KING), PAIR w/ RIVETS	-	-	2	2	2
3.2	011691	SERVICE, BUMPER, PLASTIC, .50 DIAM. X 0.11 H, PKG 4	-	-	2	2	2
3.3	011710	SERVICE, MS, 8-32 X .5, PH, PAN, SS, PKG 12	-	-	1	1	1
4	010674	EYEBOLT, 1/4-20 X 3.5" SHANK, ZN	1	1	1	1	1
5	011432	TRAY, LP TANK, STD CART, WA	1	1	1	1	1
6	017382	SERVICE, SMS, TEK, #8 X 1/2", PH, PAN, SS, PKG 6	1	1	1	1	1
7	006264	BRACKET, DRAWER SLIDE, LP TANK	2	2	2	2	2
8	011711	SERVICE, NUT, KEPS, #8-32, SS, PKG 6	1	1	1	1	1
9	011710	SERVICE, MS, 8-32 X .5, PH, PAN, SS, PKG 12	1	1	1	1	1
10	016805	GROMMET, LOCKING, 1-3/4 HOLE KNOCKOUT (SEE NOTE 5)	1	1	-	-	-

* For colors, add 2 letter color code to end of part number (e.g., 000123-BK)

NOTES:

1. EACH ITEM 1 AND 2 COME ASSEMBLED WITH ITEMS 1.1 THRU 1.4.
EACH ITEM 3 COMES ASSEMBLED WITH ITEMS 1.2 AND 3.1 THRU 3.3.
SPECIFY STAINLESS STEEL OR COLOR WHEN ORDERING. SEE NOTE 4.
2. ITEM 1.4 MAY BE FROM 2 MANUFACTURERS - PLEASE TELL CUSTOMER SERVICE IF 'BLUM' OR 'KING' IS ON THE PART.
3. THIS ITEM WAS USED ON EARLIER CART DOORS. LIMITED QUANTITIES AVAILABLE.
4. ITEM 3.1 AND 27 ARE SOLD IN PAIRS WITH POP-RIVETS INCLUDED. RE-USE OLD SCREWS/NUTS WHERE APPLICABLE.
SLIDE MAY BE FROM 2 MANUFACTURERS - PLEASE TELL CUSTOMER SERVICE IF 'ACCURIDE' OR 'KING' IS ON THE PART.
5. THIS ITEM WAS USED ON EARLIER CARTS FOR ROUTING THE POWER CORD THRU THE STORAGE SHELF.
6. THESE SCREWS/NUTS (18 & 19) ARE USED TO ATTACH THE GRILL ELECTRICAL BOX TO THE REAR WALL OF THE CART.

ITEM	PART NO.	DESCRIPTION	GCD30	GCD36	GCR30	GCR36	GCR42
			QTY				
11	007852	CASTER, SWIVEL, 3", W/O BRAKE	2	2	2	2	2
12	007854	CASTER, SWIVEL, 3", W/ BRAKE	2	2	2	2	2
13	011853	SERVICE, NUT, LCK, SERRATED FLANGE, 1/4-20, SS, PKG 4	4	4	4	4	4
14	009157	ASSY., BRACKET A, SIDE SHELF	1	1	1	1	1
15	010569	ASSY., BRACKET B, REAR, SIDE SHELF	1	1	1	1	1
15.1	011717	SERVICE, HB, 1/4-20 X .500, SS, PKG 4	1	1	1	1	1
15.2	017383	SERVICE, MS, 10-24 X 1/2, PH, FLT, UC, SS, PKG 2	1	1	1	1	1
16	015472	PLUG, ROUND, 1.750 DIA. MOUNT, PLASTIC	2	2	2	2	2
17	009191	GUARD, ELEC. BOX, STD CART, GRILL	1	1	1	1	1
18	017384	SERVICE, NUT, KEPS, #10-24, SS, PKG 4	1	1	1	1	1
19	011713	SERVICE, MS, 10-24 X .500, PH, TRUSS, SS, PKG 8	1	1	1	1	1
20	006261-030	ACCESS PANEL, REAR, GRILL, 30	1	-	1	-	-
	006261-036	ACCESS PANEL, REAR, GRILL, 36	-	1	-	1	-
	006261-042	ACCESS PANEL, REAR, GRILL, 42	-	-	-	-	1
21	008055	STRAIN RELIEF, SNAP-IN, 1.14" SQUARE MOUNT	1	1	1	1	1
22	010568	ASSY., BRACKET A, REAR, SIDE SHELF	1	1	1	1	1
23	009158	ASSY., BRACKET B, SIDE SHELF	1	1	1	1	1
24	007530	SIDE SHELF, GRILL, WA	2	2	2	2	2
24.1	010197	SERVICE, BUMPER, RUBBER, .50 DIAM. X .250 H, PKG 4	1	1	1	1	1
25	010244	KIT, HEX BOLTS & WASHERS, 6 PCS	1	1	1	1	1
26	010252	MANUAL, USE & CARE, OUTDOOR GRILL CART	1	1	1	1	1
27	037720	SERVICE, SLIDE, FULL EXT., 16", (KING), PAIR w/ RIVETS	1	1	1	1	1

NOTES:

- EACH ITEM 1 AND 2 COME ASSEMBLED WITH ITEMS 1.1 THRU 1.4.
EACH ITEM 3 COMES ASSEMBLED WITH ITEMS 1.2 AND 3.1 THRU 3.3.
SPECIFY STAINLESS STEEL OR COLOR WHEN ORDERING. SEE NOTE 4.
- ITEM 1.4 MAY BE FROM 2 MANUFACTURERS - PLEASE TELL CUSTOMER SERVICE IF 'BLUM' OR 'KING' IS ON THE PART.
- THIS ITEM WAS USED ON EARLIER CART DOORS. LIMITED QUANTITIES AVAILABLE.
- ITEM 3.1 AND 27 ARE SOLD IN PAIRS WITH POP-RIVETS INCLUDED. RE-USE OLD SCREWS/NUTS WHERE APPLICABLE.
SLIDE MAY BE FROM 2 MANUFACTURERS - PLEASE TELL CUSTOMER SERVICE IF 'ACCURIDE' OR 'KING' IS ON THE PART.
- THIS ITEM WAS USED ON EARLIER CARTS FOR ROUTING THE POWER CORD THRU THE STORAGE SHELF.
- THESE SCREWS/NUTS (18 & 19) ARE USED TO ATTACH THE GRILL ELECTRICAL BOX TO THE REAR WALL OF THE CART.

COLOR CODE	COLOR
BK	Stealth - Black
WH	Froth - White
RD	Matador - Red
YW	Sol - Yellow
OR	Citra - Orange
BG	Tin Roof - Burgundy
PP	Lush - Purple
BU	Prince - Blue
GR	Grove - Green
GG	Pacific Fog - Dark Gray
TQ	Bora Bora - Turquoise

* For colors, add 2 letter color code to end of part number (e.g., 000123-BK)