



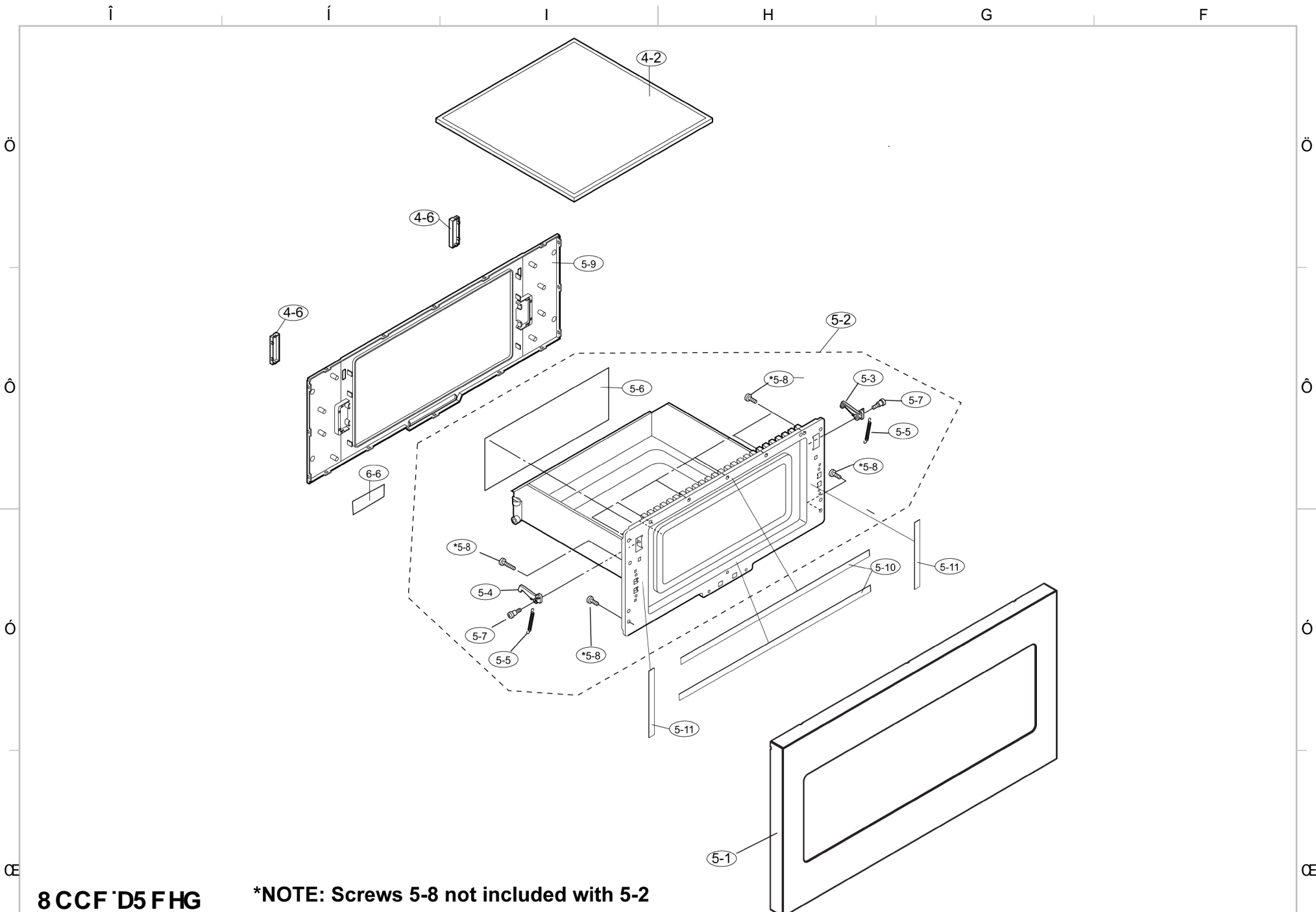
Drawer Microwave

KMWR₃₀

Parts List

Hestan Commercial Corporation
3375 E. La Palma Ave.
Anaheim, CA 92806
(888) 905-7463

RETAIN THIS FOR FUTURE REFERENCE



8 CCF 'D5 F HG

*NOTE: Screws 5-8 not included with 5-2



DFC DF-9 H5 FM
 PUAJCEVAJZAPQWOUOMTCEVITCEAOOUOUOUMCOOBA
 UVUJOCOPABUOUXGESAYVOTBUJUAUSBITQVCOOBA
 CEYQUUTBYQPUIWAPQAYUQVCEAJOUTQUQIPAJQA
 P**QAJI (/ S) **QJ I I) **QJ I I) **QJ I I) **QJ I I)
 OUBUAPASSCOUOVUJPOANUJUPXUQVCEAJOUVUVE

0000000000

G9FJ 7 9 Z8 F5 K 9 F'
 A 7 FCK 5 J 9 'f' PAK F' \$L

0000000000

?AK F' \$!G9FJ 7 9

0000000000

5
 0000000000
 GAUQA

Í Í I H G F

Ö

Ö

Ö

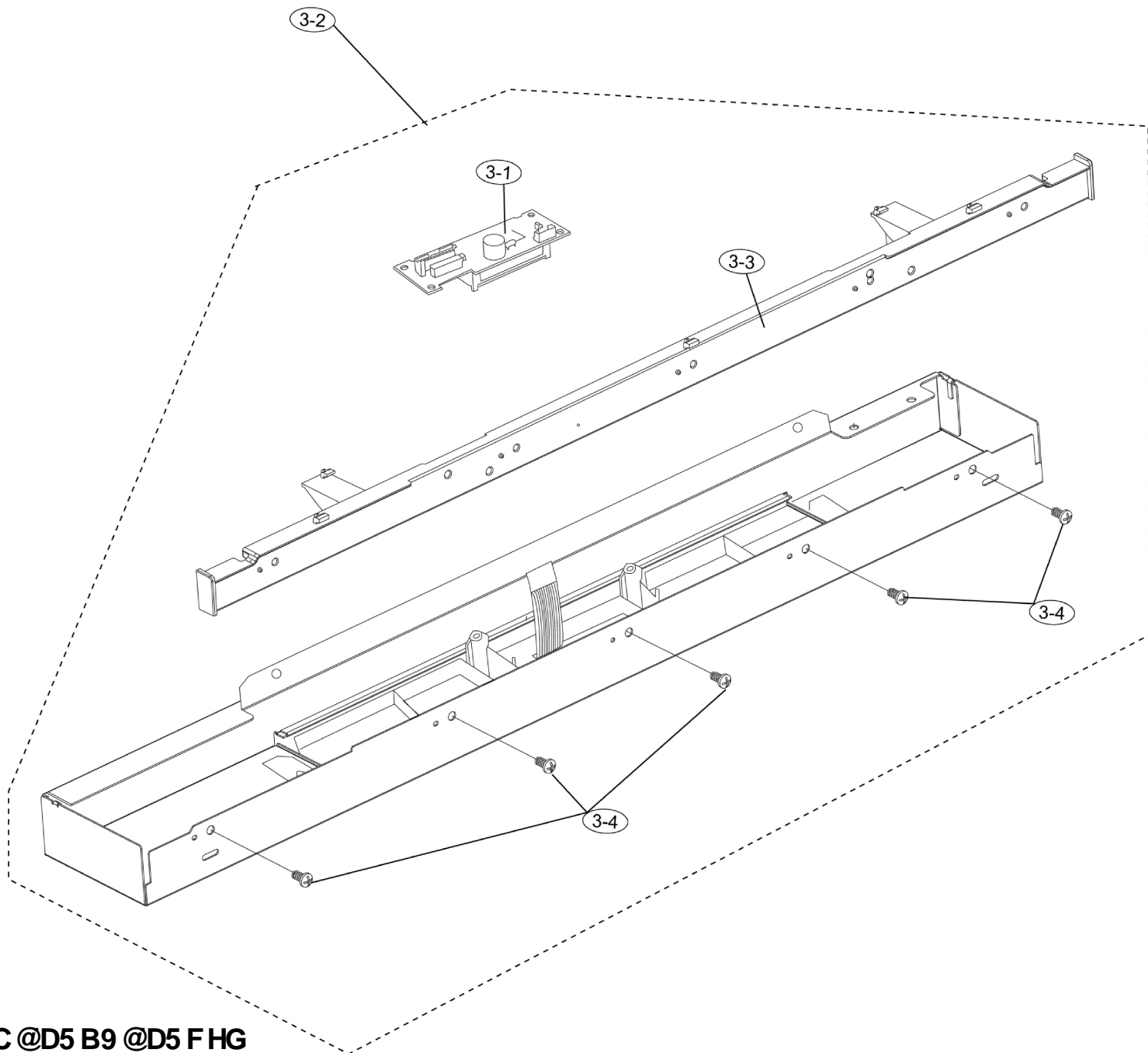
Ö

Ó

Ó

œ

œ



8 F 5 K 9 F ' 7 C B H F C @ D 5 B 9 @ D 5 F H G



DFC DF-9 H5 FM
 P U A I O E V A U Z A P Q @ U O M T C E V T C E A O O U O U O M C O C A
 U V U U O O F A B U O U @ X E S A V Y V O T B U A U A U S P U T Q V C O C A
 C E Y A U T B Y Q P U W A P O A U Q V C A U O T @ U S P A U A
 P * @ A Q I (/ S @ @ @ Q I I) @ @ B P @ Q U O M T C E V A U A B Y
 O U U @ U A P @ S S C A U O V U P O O W U P A U Q V C A U O U O U E

00000@v@P

G9FJ=9Z8F5K9F'
 A=FCK5J9'f?AKF'\$L

00000@v@P

?AKF'\$!G9FJ=9

00000@v@P

5
 HAUOA

Í Í I H G F

Balloon #	HESTAN Part Number	Description	Qty.
ELECTRICAL PARTS			
1-1	029290	HVC ASSY.	1
1-2	029291	PSU- DRAWER	1
1-3	029292	SW PSU	1
1-4	029293	POWER SUPPLY CORD	1
1-5	029294	SENSOR ASSY.	1
1-6	029295	FAN MOTOR ASSY.	1
1-7	029296	NOISE FILTER UNIT	1
1-8	029151	MONITOR SWITCH	1
1-9	029297	OVEN LAMP WITH SOCKET	1
1-10	029298	STIRRER MOTOR	1
1-11	029299	OVEN/MG DM FUSE	2
1-12	029300	TRANSFORMER	1
1-13	029301	MAGNETRON	1
1-14	029302	DRAWER HARNESS	1
1-15	029153	PRIMARY INTERLOCK / THIRD DOOR / DOOR SENSING SWITCH	3
1-16	029303	AUTO DRAWER GEAR ASSY.	1
1-17	029304	CPU HARNESS	1
1-18	029171	20A FUSE	1
CABINET PARTS			
2-1	029305	OUTER CASE CABINET	1
2-2	029306	AC CORD MOUNT ANGLE	1
2-3	029307	SIDE ANGLE L	1
2-4	029308	SIDE ANGLE R	1
2-5	029309	CORD BUSHING	1
2-6	029310	LATCH COVER	2
CONTROL PANEL PARTS			
3-1	029311	CPU- DRAWER	1
3-2	029312	TOUCH CONTROL PANEL ASSY.	1
3-3	029313	C/P BOTTOM MOUNT INSERT	1
3-4	029314	SCREW	5

Balloon #	HESTAN Part Number	Description	Qty.
OVEN PARTS			
4-1	029315	DOOR STOPPER	2
4-2	029316	OVEN TRAY ASSY.	1
4-3	N/A	CAVITY ASSEMBLY (NOT REPLACEABLE PARTS)	1
4-4	029317	ANTENNA ASSY.	1
4-5	029318	BACKPLATE	1
4-6	029319	DOOR SUPPORT COVER	2
4-7	029320	BASE PLATE	1
4-8	029321	DOOR SUPPORT ANGLE A	2
4-9	029322	DOOR SUPPORT ANGLE B	1
4-10	029323	HVC BAND	1
4-11	029324	PSU HOLDER	1
4-12	029325	SW PSU HOLDER	1
4-13	029326	SLIDE RAIL	3
4-14	029327	RACK GEAR	1
4-15	029328	CANOE CLIP	4
4-16	029329	C/P REAR COVER	1
4-17	029330	ANTENNA COVER	1
4-18	029331	OVEN LAMP COVER	1
4-19	029332	INLET CUSHION	2
4-20	029333	HV T CUSHION	1
4-21	029334	EXHAUST DUCT CUSHION	1
4-22	029335	FAN MOTOR SUPPORT CUSHION	1
4-23	029336	AIR FLOW CUSHION	1
4-24	029337	CUSHION	1
4-25	029338	OIL DAMPER	1
4-26	029339	MAG DUCT	1
4-27	029340	SENSOR DUCT	1
4-28	029341	EXHAUST DUCT	1
4-29	029342	LAMP FILTER	1
4-30	029343	PARTITION AG BOTTOM	1
4-31	029344	PARTITION AG REAR	1
4-32	029345	LATCH HOOK R	1
4-33	029346	LATCH HOOK L	1
4-34	029347	FACEPLATE OUTERCASE COVER	1
4-35	029348	STIRRER MOTOR SHAFT	1



DFCDF-#H5FM
P U A I O E V A U G P Q U O W T C E V T C E A O O U O U O W O O O A
 U U U O C P A B U O U O W G E S A V Y V O T B U U A U S B U T O V C O O A
 O B Y A U T B Y Q P U W A P O A U G V C A U O T Q U O P A U O A
 P * * Q A Q I ((S A S S O U I I)) H A) B P Q U O W T C E V A U U A B Y
 O U U B U A P S S C O U O W U P O O W U P X U G V C A U O U W O U E

0000000000

G9FJ=9Z8F5K9F'
 A=FCK5J9'f?AKF' \$L

0000000000

?AKF' \$!G9FJ=9

0000000000
 5
U P O O V A B U E I A U O A

Balloon #	HESTAN Part Number	Description	Qty.	Balloon #	HESTAN Part Number	Description	Qty.
DOOR PARTS				SCREWS, NUTS, AND WASHERS			
5-1	029349	DOOR FRAME ASSY.	1	7-1	029368	M4-POINTED-8	11
5-2	029350	DOOR PANEL ASSY.	1	7-2	029264	SPECIAL SCREW W/ WASHER	2
5-3	029351	LATCH HEAD R	1	7-3	029369	SCREW	3
5-4	029352	LATCH HEAD L	1	7-4	029370	SCREW WITH WASHER	2
5-5	029353	LATCH SPRING	2	7-5	029371	CAP NUT	2
5-6	029354	SEALER FILM	1	7-6	029372	CAP NUT	4
5-7	029355	SPECIAL SCREW	2	7-7	029373	SCREW, M3 X 8MM, TAP BINDING HEAD	4
5-8	029244	SCREW, M4 X 8MM, TAP PAN HEAD	11	7-8	029190	SCREW, POWER UNIT ASSY.	8
5-9	029356	CHOKE COVER	1	7-9	029188	SCREW, CONTROL UNIT MOUNTING	7
5-10	029357	DOOR CUSHION HORIZONTAL	1	7-10	029374	SCREW, 4MM X 8MM	5
5-11	029358	DOOR CUSHION VERTICAL	1	7-11	029375	SCREW, 4MM X 6MM	2
MISCELLANEOUS				7-12	029376	SCREW, M4 X 8MM, TAP TRUSS (RoHS)	5
6-1	027834	USE & CARE MANUAL, DRAWER MICROWAVE	1	7-13	029283	SCREW, 4MM X 12MM	58
6-2	027836	INSTALLATION, DRAWER MICROWAVE	1				
6-3	029359	WOOD SCREW (M4 X 20, PANHEAD)	4				
6-4	029360	DHHS/GRD/CAUTION LABEL	1				
6-5	029361	MONITOR CAUTION LABEL	2				
6-6	029362	CONSUMER WARNING LABEL	1				
6-7	029363	USER CAUTION LABEL	1				
6-8	029364	WAVEGUIDE COVER CLEANING LABEL	1				
6-9	029365	MENU LABEL	1				
6-10	029366	SCHEMATIC DIAGRAM	1				
6-11	029367	USER CAUTION FRENCH LABEL	1				
6-12	029253	NHW CAUTION LABEL	1				



DFCDF-9H5FM
P U A O E V A U Z A P Q U O M T C E V I T C E A O O U O U O W O C O B A
U V U U O O P A B U O U D X G E S A V Y V O T B U U A U S P U T O V O C O B A
O P Y A U T B V Q P U W A P O A U Q V O P A U O T Q U O P A J O A
P * * Q A I I (A B B C I I I) B P Q U O W T C E V A U A B Y
O U O U A P E S S C O U V W P O O W U P A U Q V O P A U O U V O U E

000000000

G9FJ=9Z8F5K9F'
A=FCK5J9'fPAKF' \$L

000000000

?AKF' \$!G9FJ=9

000000000

5
UPOOVAUE IAUOA