

SMART GAS FEATURES



36" SMART GAS DUAL FUEL RANGE

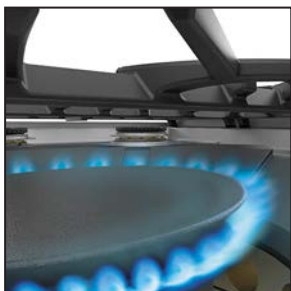
- Hestan Smart Technology creates a seamless cooking experience, allowing the Smart Gas Burner (1) and Smart Pan (1) to work in unison with you.
- Hestan Smart Pan (1 included) features Bluetooth® technology and patented embedded culinary sensors that automatically control cooking temperature as you adjust the AccuKnob™ to your desired temperature.
- 100 to 500°F (in 25°F increments) of precise temperature control is accessible via a unique, industry first, patent-pending touch-screen AccuKnob™ with built-in full color TFT LCD display.



AccuKnob™



Smart Pan Temperature Sensing



Smart Gas Burner

- No more LOW, MEDIUM, or HIGH settings. Smart Gas Technology eliminates guessing and instead allows precise and consistent temperature control.
- Dual cooking modes (Temperature Control & Manual) for more versatility.
- In Temperature Control mode, exclusive Smart Technology automatically adjusts the Smart Gas Burner's flame level to reach and maintain the precise target temperature as selected by the user. This Temperature Control mode is only possible using the Hestan Smart Pan.
- In Manual mode, cooking power is displayed by 12 heat settings. This Manual mode can be utilized to cook on any pan.
- AccuKnob™ in Temperature Control mode shows preheat temperature until set / selected temperature is achieved.
- Hestan Smart Gas Burner is a high performance dual-flow gas burner system with significant turndown capability from high Btu performance (20,000 Btu/hour) to low continuous simmer (500 Btu/hour) - NG..
- One single Hestan Smart Gas Burner (right front) and one single Hestan Smart Pan is included in each Hestan Smart Gas product (rangetops or ranges)
- The Hestan Smart Pan has a built-in safety limit of 550°F and the pre-programmed SafeGuard automatic shut-off, which can be programmed to either 4, 8, or 12 hours.
- Embedded sensors can detect the absence of the Hestan Smart Pan immediately, triggering an automatic shut-off.
- Other compatible Hestan smart cookware is also available.
- Personalization options include a choice of languages, as well as a choice between F° or C°.



*KRDS365 with optional
10" backguard (KBGLB36)
model shown*

The Hestan Smart Pan, which is also used for the Hestan Cue-enabled Smart Induction cooktops and portable countertop burner, is included with your Smart Gas product. However, guided cooking features, recipes, etc, are not part of the Smart Gas rangetops or dual fuel ranges. The GloConnect app is not to be confused with the Hestan Cue app.

**36" SMART GAS
DUAL FUEL RANGE**

STANDARD FEATURES



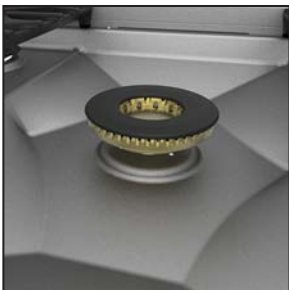
36" SMART GAS DUAL FUEL RANGE

- Heavy-duty cast-iron grates provide a continuous uninterrupted and maximized cooking surface for best in class coverage. In combination with brass sealed burner and burner bowl, designed to optimize combustion efficiency to produce top cooking performance, including the fastest time-to-boil.
- Award winning CircuFlame™ brass sealed center power burner provides 30,000 Btu/hour of high-performance cooking power, featured in Michelin starred restaurants and used by the top chefs around the country.
- High performance dual-flow burner system allows for significant turndown capability from high Btu performance (23,000 Btu/hour *Left Front Burner*) to low continuous simmer (500 Btu/hour *All Burners*). - NG

Back-Lit Knobs



CircuFlame™ Burner



Marquise Display™



- Patented, diamond stainless steel burner bowl, emphasizes the CircuFlame™ power burner. Allows for ease of cleaning with a water tight seal.
- Exclusive raised pattern burner cap design that is easy to remove and clean.
- Robust electronic ignition/re-ignition capability to provide safety and proper gas ignition. Igniter will continue to spark until the burner flame is established, and re-ignite in the case of flame blow out.
- Exclusive PureVection™ technology, electronically controls multiple heating elements and convection systems, to optimize baking, broiling, roasting, convection baking, and self cleaning processes. Achieved by alternating and adjusting the levels of heat and air circulation needed to produce the best result.
- MarquiseDisplay™ patent pending touch control oven display is discreetly and conveniently located in Marquise Accented™ oven door handle. Time, modes and temperature are elegantly displayed.
- 5.8 Cu. Ft heavy duty, porcelain enameled oven cavity interior for even heat distribution. Concealed bake, broil, and convection elements designed for ease of cleaning and more usable capacity.
- Gentle-close door feature is counterbalanced and equipped with a shock absorption system for stable, assisted closing of the door and smooth, effortless access.
- Distinctly angled oven door, commercial grade end caps and Marquise Accented™ handle are ergonomically designed for ease of opening and closing of oven door.
- Extra-wide glass oven window provides improved viewing area while keeping temperatures outside cool to touch
- Three full-extension, telescopic professional oven racks with (6) position rack supports, glide easily for convenient access.
- Soft-on & off oven interior lighting.
- Standard meat probe for accurate temperature measurement



KRDS365
with optional
10" backguard
(KBGLB36)
model shown

- Elegantly backlit control knobs add functionality and brilliant illumination.
- Zamak die-cast range and oven control knobs.
- Comes standard with Island Trim

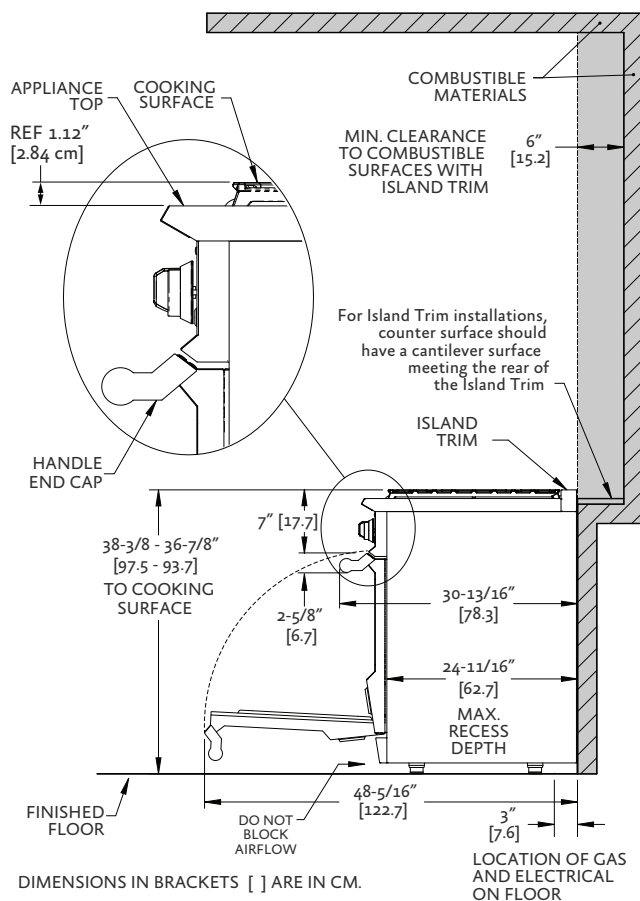
OPTIONS & ACCESSORIES

- Available in Twelve (12) Hestan signature color finishes
- Backguards : Low Back 10" and High Shelf 20"
- Natural Gas (NG) or Liquid Propane (LP)
- Wok Ring
- Gas conversion kits (NG/LP)
- High altitude kit

36" SMART GAS
DUAL FUEL RANGE

SIDE VIEW

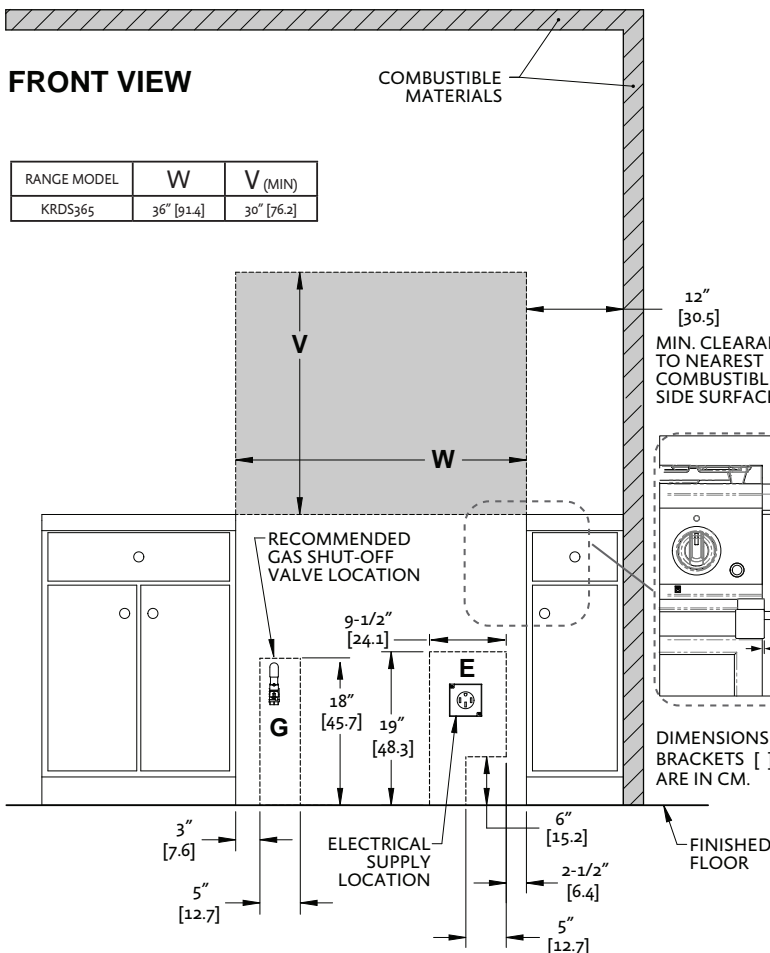
INSTALLATION CLEARANCES WITH ISLAND TRIM



INSTALLATION CLEARANCES 36" WITH ISLAND TRIM

FRONT VIEW

RANGE MODEL	W	V (MIN)
KRDS365	36" [91.4]	30" [76.2]



NOTES:

- SHADED AREAS INDICATE WHERE COMBUSTIBLE MATERIALS ARE NOT ALLOWED.
- APPLIANCE TOP MUST BE LEVEL OR HIGHER THAN THE ADJACENT COUNTERTOP SURFACES.
- "G" IS GAS CONNECTION ZONE ON REAR WALL. MOUNT SHUT-OFF VALVE AS HIGH AS POSSIBLE IN THIS ZONE FOR EASY ACCESS WHEN RANGE IS INSTALLED.
- "E" IS ELECTRICAL SUPPLY ZONE.
- "W" IS APPLIANCE OPENING.
NOTE: HANDLE END CAPS PROTRUDE 1/8" BEYOND EACH SIDE OF THE RANGE. ALLOWANCE MAY BE NEEDED FOR ADJACENT DRAWERS OR CABINETRY.
- "V" IS MIN. CLEARANCE TO REQUIRED VENTILATION HOOD.

ELECTRICAL REQUIREMENTS:
208/240V, 60Hz, 40 amps

GAS REQUIREMENTS: 1/2" NPT gas connection. Minimum gas supply is 7" water column for natural gas and 11" for propane. Operating pressure at the manifold is 5" water column for natural gas and 10" for propane. All units require a regulated gas supply. (included)

Hestan Indoor products are approved for indoor use only. Hestan Commercial Corporation reserves the right to change materials and specifications without notice. Please reference our Installation Instructions for more elaborate detail and as the main source in your dimensional planning. Specify type of gas when ordering.



ALL Models	Description	Cutout Dimensions		Total Btu's	Circuit Breaker Req	Approx SHP WT (lbs)
		W (in.)	D (in.)			
KRDS365-NG/-LP	36" Range with 4 burners + 1 Smart Burner	36"	24-1/2"	104,000	40 Amp	490



CONTACT US: www.hestanhome.com phone 888.905.7463 3375 E. La Palma Ave., Anaheim, CA 92806