



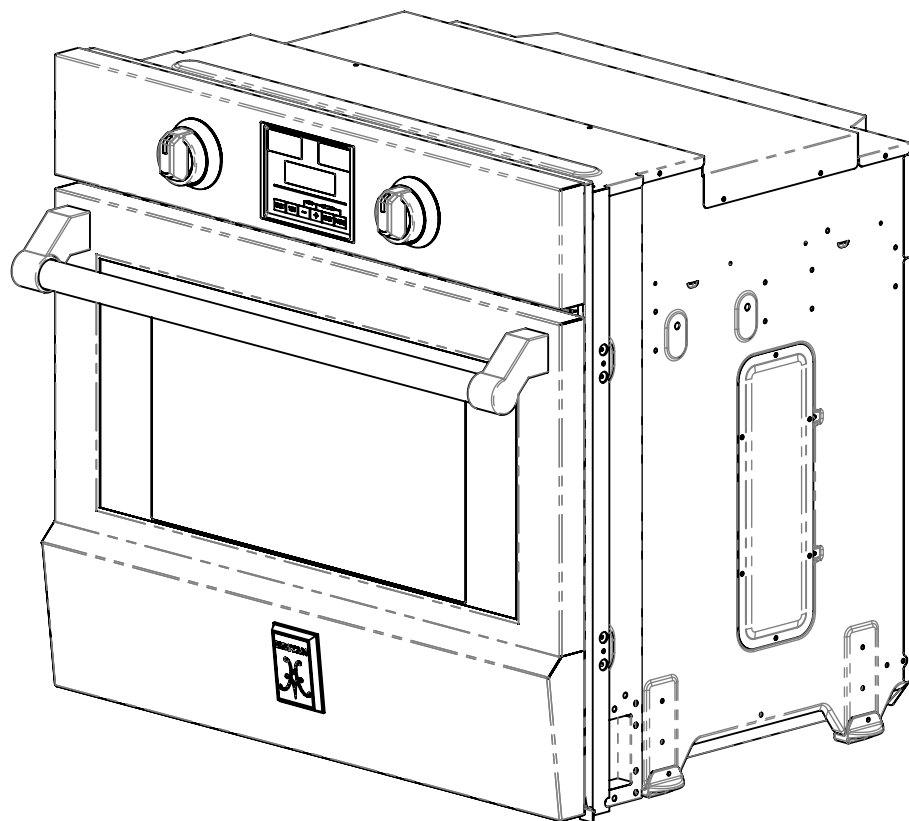
Single Wall Oven - KSO₃₀

Single Wall Oven
w/ Painted Door - KSO₃₀-XX

Parts List

Hestan Commercial Corporation
3375 E. La Palma Ave.
Anaheim, CA 92806
(888) 905-7463

RETAIN THIS FOR FUTURE REFERENCE



? GC' \$!LL'G<CK B

Color Extension (-XX)	Description
	Stainless Steel
-BK	Stealth - Black
-WH	Froth - White
-RD	Matador - Red
-YW	Sol - Yellow
-OR	Citra - Orange
-BG	Tin Roof - Burgundy
-PP	Lush - Purple
-BU	Prince - Blue
-GR	Grove - Green
-GG	Pacific Fog - Graphite Gray
-TQ	Bora Bora - Turquoise

HESTAN

DFC DF-9 H5 FM
P U A I D U A G P A Q U O M T C E V I T C E A O O U O U O M O O S
U U U O O P A B U O U B X G S A Y U V T B U A U S P U T Q V C O R A
C E Y A U T B V Q P U W A P O Y U Q V C A U T Q U S I P A I A
P * A Q I (I A B A Q I) I I I I B P Q U O M T C E V A U A B Y
O U U B U A P E S S O A U V A P O O N U P A Y U Q V C A U O U O U V E

0000000000

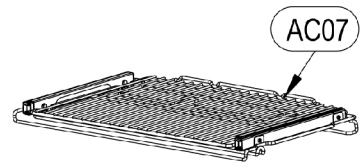
G9 F J = 7 9 Ž K 5 @ @ C J 9 B Ž G = B ; @
f! GC' \$ / ' ? GC' \$!LL

0000000000

? GC' \$!LL!G9 F J = 7 9

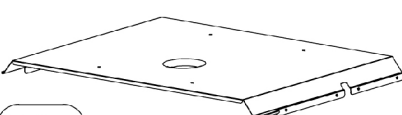
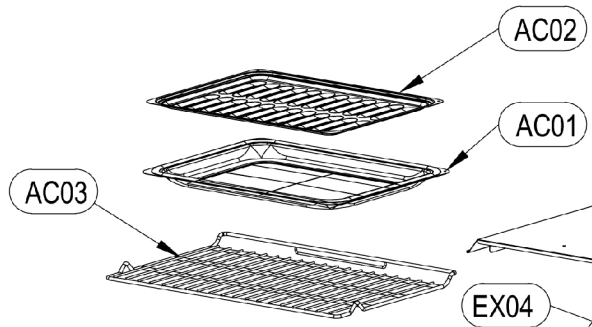
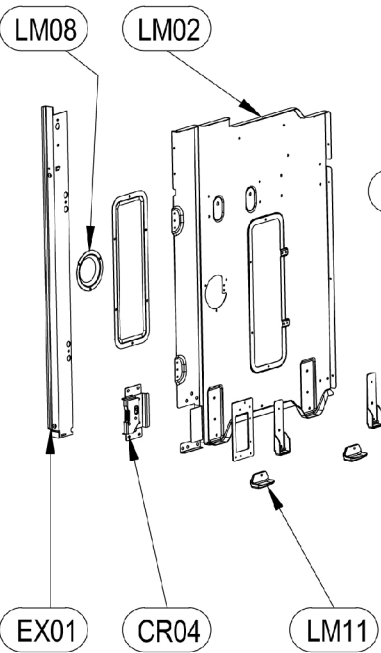
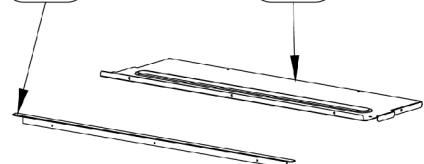
0000000000

7
U P O O V A U E



EX06

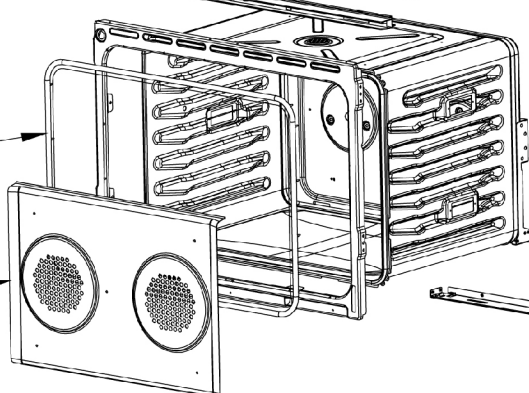
LM05



EM25

GU01

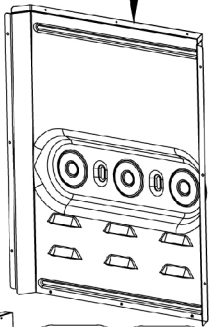
SM01



EM24

EM23

LM12



LM03

VM14

LM09

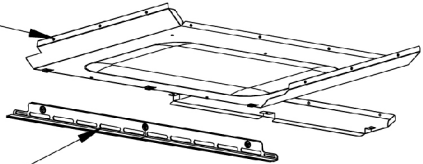
CR03

LM07

EX02

LM06

EX03



G97HCB%

2.873.451A

HESTAN

DFC DF-9 H5 FM
P U A D U V A U G P A Q U O M T C E V T C E A O O U O U O N O O O A
U U U U O O A B U O U D X E S A Y U V T B U A U S P U T Q V O O A
C E Y A U T E V Q P U W A P O N U Q V O A U O T Q U Z P A U A
P A A Q I (C A A Q I) I A B P A Q U O M T C E V A U A B Y
O U U B U A P E S S O O U V A P O O N U T P A U Q V O A U O U V U E

0000000000

G9FJ=79ZK5@@CJ9BZGB; @
fP GC' \$/ ' ? GC' \$!LL

0000000000

? GC' \$!LL!G9FJ=79

0000000000

7
U P O O V A U E
F A U O A

CB01

LM04

EM04

VM08

EM14

EM05

EM16

LM01

EM06

EL08

EL10

VM03

GU06

EM19

EM07

EM10

EL11

EM21

VM04

EM20

GU03

EM12

EM11

EL14

EL15

EL12

EL13

G97HCB&

HESTAN

DFC DF-9 H5 FM
P U A D U A D P A D U O M T C E V A C E A O U O U O N O O A
U U U O O P A B U O U D E A Y U O T B U A U A B U T O V O O A
C E Y A U U T E V Q P U W A P O A U O V O A U O T Q U O P A U A
P * A A O I (((A A A O I))) A B P A O U O M T C E V A U A B Y
O U U A U A P O S S O O U O W A P O O N U U A Y U O V O A U O U O U E

0000000000

G9FJ=9ŽK5@@CJ9BžGB; @
fP GC' \$/ ' ? GC' \$!LL

0000000000

? GC' \$!LL!G9FJ=9

0000000000

7
GÁŮĀ

G97 HCB'



HESTAN

DFCDE 9H5FM

DFCDEH5FM
 RUJCUVAJAPRUQUWOTOBVATOBADUQUUWOMOCOA
 UUUUOOBAPRUQUWOTOBVATOBADUQUUWOMOCOA
 OBYAUTUBVAPRUQUWOTOBVATOBADUQUUWOMOCOA
 PABOYU (1-8-80) (1-8-80) BAPRUQUWOTOBVATOB
 UUUUOOBAPRUQUWOTOBVATOBADUQUUWOMOCOA

ῥῶτ' ὁὔτιν' ὀφείβῃ

G9FJ=79ŽK5 @@CJ9BŽG-B; @'f! GC' \$' ?
/ '? GC' \$!LLŁ

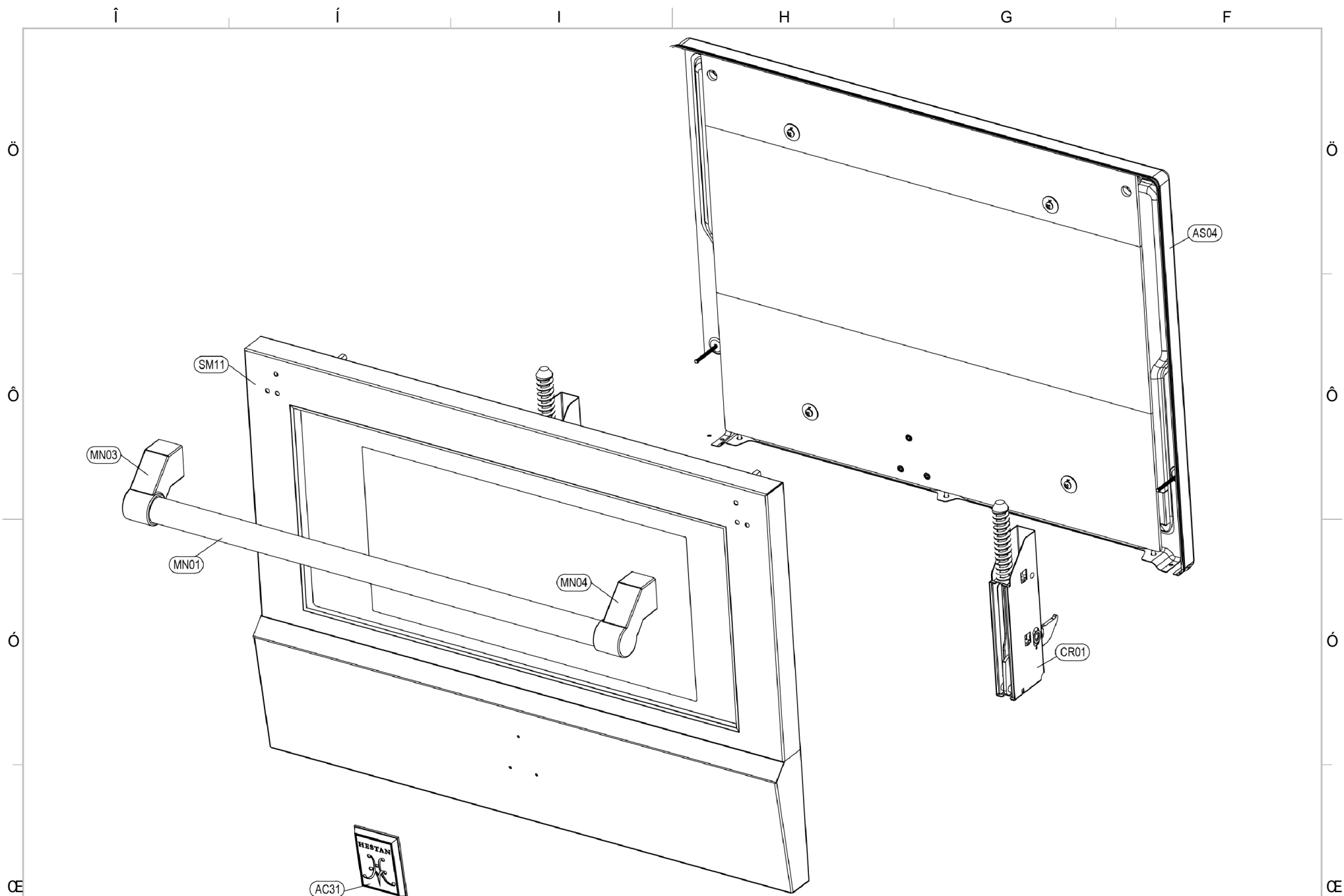
ÖLÜM RÖLÜ

\$? GC' \$!LL!G9FJ≡9

ÜÖXÖ/Ö/Ö

7

ÚPÒÒNÁPUE
HÁU Qǎ



G97 HCB)

2.873.451A



DFC DF-9 H5 FM
P U A I O U A U G P A Q U O M T C E V I T C E A O O U O U O N O O O A
U U U U O O P A B U O U B X E S A Y U V O T B U A A U B U T Q V O O B A
C B Y A U T B Y Q P U W A P O A Y U Q V O A O U T Q U Z I P A J O A
P A A Q I ((A A A A A) ()) B P A Q U O M T C E V A U A B Y
O U U B U A P E S S O O U V A P O O N U T P A Y U Q V O A O U Y O U V E

0000000000

G9 F J = 7 9 Ž K 5 @ @ C J 9 B Ž G = B ; @
f P G C ' \$ / ' ? G C ' \$! L L

0000000000

? G C ' \$! L L ! G 9 F J = 7 9

0000000000

7
I A U O A

17-Jun-2021

ὙΠΟΘΕΣΕΙΣ

SINGLE OVEN PARTS LIST

KSO30 / KSO30-XX

17-Jun-2021

SECT. #	BALLOON #	HESTAN P/N	DESCRIPTION	NOTES
2	EM11	025507	BOTTOM HEATING ELEMENT, 3000W 240V	
2	EM12	025508	RING HEATING ELEMENT, 1300W 240V	
2	EM14	025509	THERMOSTAT, MANUAL RESET, NC155°C-16A BIPOLAR Ty62-R	
2	EM16	025510	THERMOSTAT, FIXED TEMP., 16A 70°C	
2	EM19	025511	MOTOR, FAN, 80K, RIGHT, 120V	
2	EM20	025512	FAN BLADE, SS, LEFT, 30"	
2	EM21	025513	FAN BLADE, SS, 30"	
2	GU03	025514	RING ELEMENT SEAL, FIBER, 27/30"	
2	GU06	025515	GASKET, FIBER, CEILING, 80K	
2	LM01	025516	THERMOSTAT BRACKET	
2	LM04	025517	UPPER COVER, BACK, 80K	
2	VM03	025518	SPACER, ELECTRONIC CONTROL	
2	VM04	025519	SCREW, FAN MOTOR, 80K	
2	VM08	025520	SPACER, CERAMIC, MAIN POWER CONNECTOR	
3	AS01	025492	ASSEMBLY MOTOR LOCKING DOOR, 1μ 120V 80K UL	
3	AS02	025493	ASSEMBLY DOOR LOCKING, 3T, 80K	
4	CB03	025521	WIRING, OVEN, 30" 80K, DISPLAY BOARD-DISPLAY	
4	CB04	025522	WIRING, OVEN, 30" 80K, DISPLAY BOARD-DISPLAY	
4	CB06	025552	WIRING, OVEN, 30" 80K, DISPLAY	
4	EL05	025525	DISPLAY BOARD, CLOCK, WHITE, UL	
4	EL06	025526	DISPLAY BOARD, FUNCTION, WHITE	
4	EL07	025527	DISPLAY BOARD, TEMP., WHITE	
4	EL33	019678	LED DRIVER, HESTAN	
4	EL34	017612	LED MODULE, KNOB LIGHTING, HESTAN	
4	EM01	025530	SELECTOR, 0+8 POSITION, MULTIFUNCTION MODEL	
4	EM03	025531	SELECTOR, TEMPERATURE	
4	EM70	025532	COMMUTATOR, 8F+0 L20 7LA-8902XX, KNOB LIGHTING	
4	MP01	020663	KNOB, HESTAN	
4	MP05	025534	GUIDE, SELECTOR	
4	MP07	019744	LENS, DIFFUSER, HESTAN	
4	SM10	025550	CONTROL PANEL, FRONT, 80K, HESTAN	
4	VM15	025537	SPACER, DISPLAY	
4	80	025553	WIRING, OVEN, 30" 80K	
4	81	025547	WIRING, KNOB LIGHTING, 80K HESTAN	
4	82	016512	TRANSFORMER, 40VA, 120VAC TO 12/24V	
5	AC31	001834	LOGO, HESTAN, 3.5 X 2.5	
5	AS04	025538	OVEN DOOR BASE ASSEMBLY 80K, HESTAN	
5	CR01	025539	DOOR HINGE ASSEMBLY, 80K GAS/DF/IND.	END - Mar. 17, 2019
5		037650	DOOR HINGE ASSEMBLY, 80K GAS/DF/IND.	BEGIN - Mar. 18, 2019
5	MN01	020670	HANDLE, WALL OVEN/WARMING DRAWER	
5	MN03	000463	ENDCAP, HANDLE, LH, SM	
5	MN04	000704	ENDCAP, HANDLE, RH, SM	
5	SM11	025540	PANEL, OVEN DOOR w/ BADGE (STAINLESS STEEL)	
5	SM11	022925-XX	KIT, OVEN DOOR, LOWER, WALL OVEN (COLOR)	SPECIFY COLOR



DFC DF-9 H5 FM
P U A D E V A U G P Q U O V T C E V T C E A O O U O U O N O O A
U U U U O O P A B U O U B O U C E A Y U V O T B U A U A U B U T O V C O B A
C E Y A U U T E V Q P U W A P O V U Q V C A U O U T Q U B P A U A
P * Q A Q I ((A B A B I) (I A B) B V P Q U O U V T C E V A U A B Y
O U U B U A P O S S O O U V A P O O N U U P Y U Q V C A U O U V O U E

0000000000

G9FJ=79ŽK5@@CJ9BžG-B; @
fP GC' \$/ ' ? GC' \$!LL

0000000000

? GC' \$!LL!G9FJ=79

0000000000

7
UP O O V A W I E
I A U O A