

SERVICE INSTRUCTIONS



INSTALLATION OF WOOD OVERLAY PANELS ON INDOOR/OUTDOOR REFRIGERATION

MODELS: GRS, GRG, GRWS, GRWG, GFDS, GRR, GRFR

IMPORTANT - READ ALL INSTRUCTIONS BEFORE YOU BEGIN

Hestan Outdoor refrigeration units (solid or glass doors) are shipped from the factory with stainless steel front panels and handle in place on the unit. These models can be modified to accept a decorative wood overlay panel to match surrounding wood cabinetry and door handles (supplied by the customer). Templates for these wood panels are available on the Hestan website, www.hestanhome.com. Take care to choose the correct template for your specific refrigeration model (see table below).

Note: Glass doors may sweat (condensation) in conditions with relative humidity over 75%.

Some parts of the unit have sharp edges. Care must be taken when handling the various components to avoid personal injury. Wear gloves when handling. Also be careful not to tear the rubber door gasket material. If it is damaged, a replacement gasket can be ordered from the Hestan Service Dept.

TOOLS REQUIRED:

- Work gloves
- Safety glasses
- Phillips & flat-blade screwdrivers

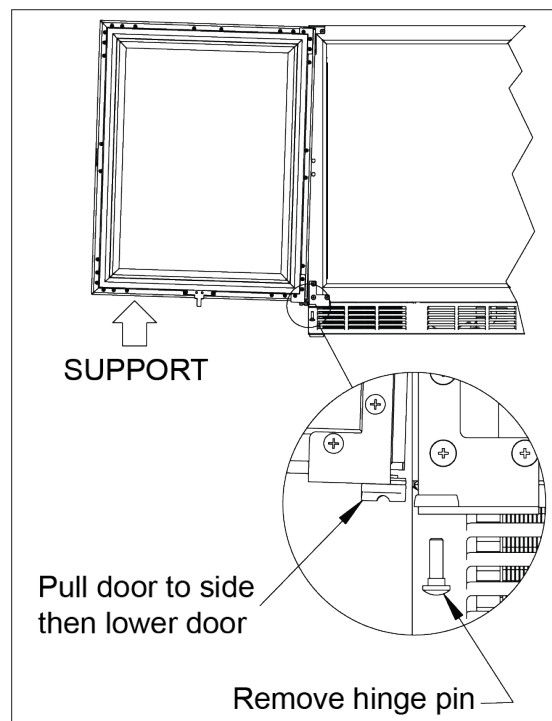
Template #	Description
028370	Wood Overlay, 24" Solid Door
028371	Wood Overlay, 24" Toe-Kick
028372	Wood Overlay, 24" Glass Door
028373	Wood Overlay, 24" Solid Drawer

DISASSEMBLY



STEP 1

Open the door and support the bottom edge as shown. Remove the hinge pin with a stubby flat-blade screwdriver. Slide the bottom edge of the door away from the unit to remove the door. Make a note of how the bracket, pin, and small plastic bearings all go together.

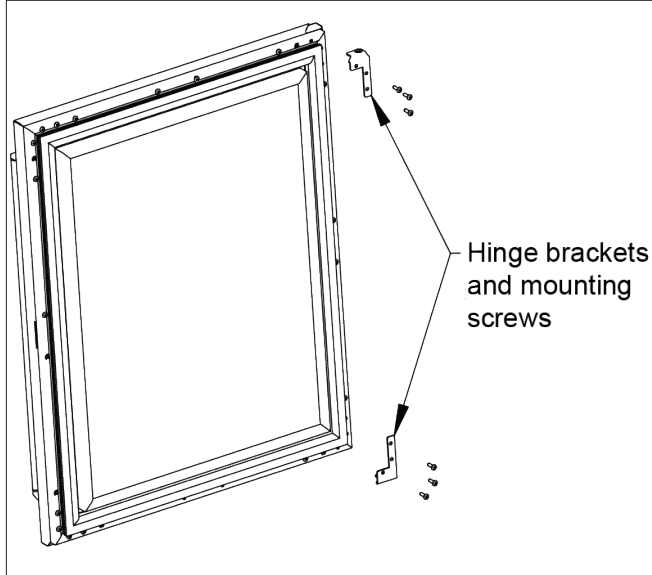




DISASSEMBLY *(continued)*

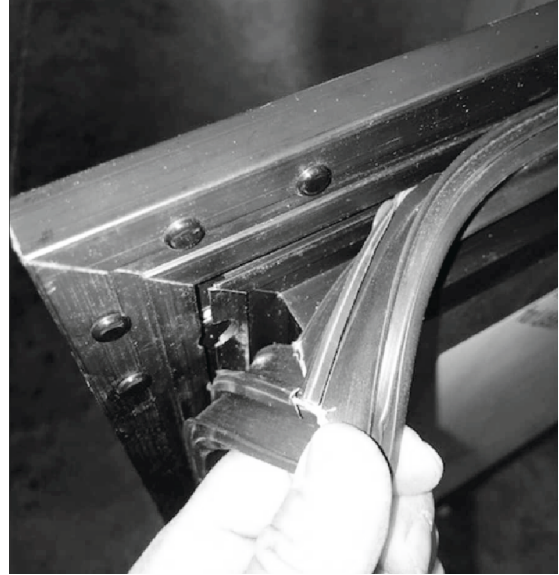
STEP 2

It may be necessary to remove the top and bottom hinge brackets. Retain screws for reinstallation later.

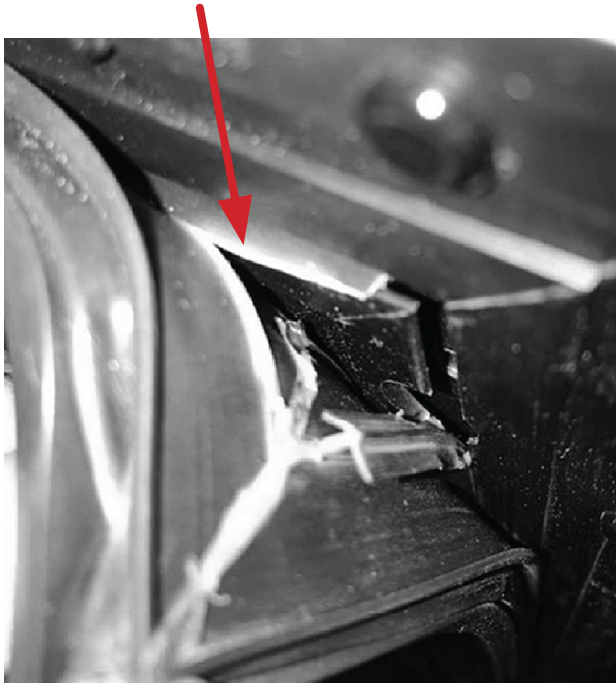


STEP 3

Remove the gasket carefully starting at the corners and avoid ripping the dart which goes in the channel. Use a narrow flat-blade screwdriver if needed.

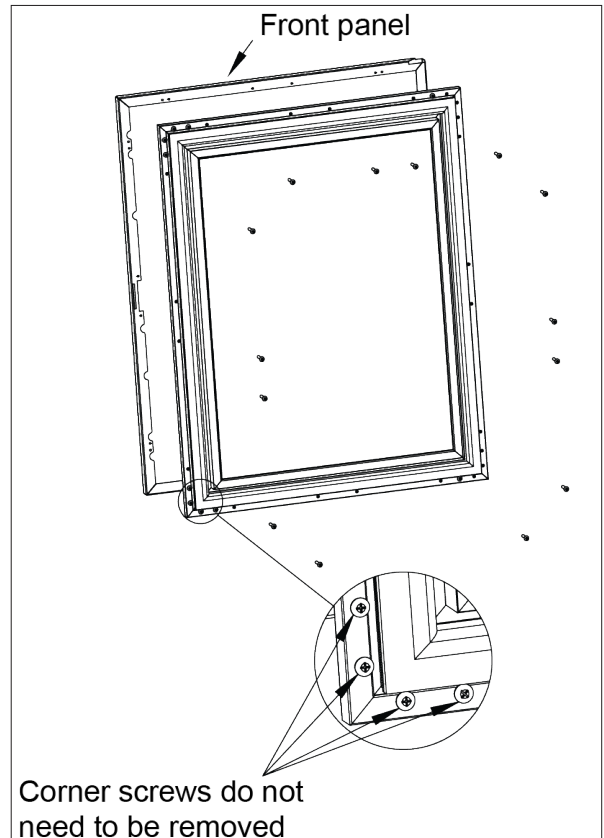


If the dart on the gasket is ripped, replace with a new gasket.



STEP 4

With the gasket removed, remove the existing stainless steel front panel by removing the screws, 4 per side, around the perimeter of the door.

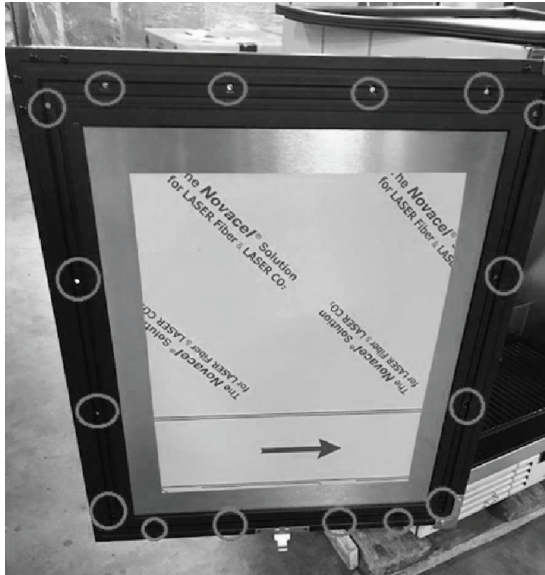


REASSEMBLY



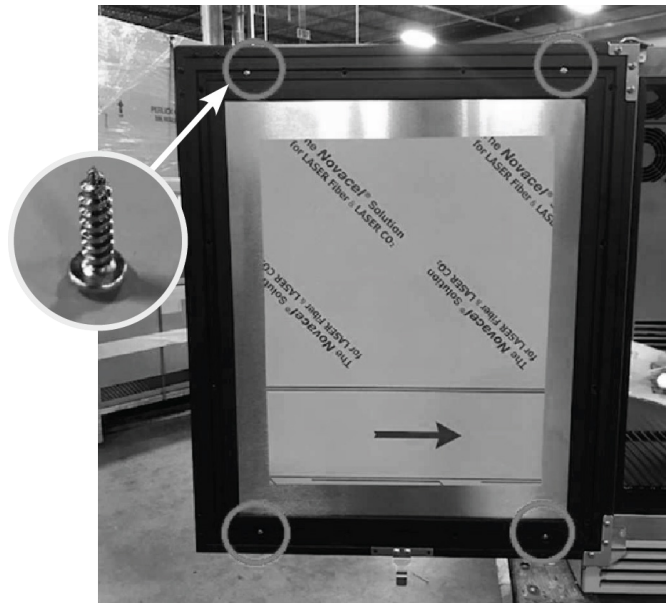
STEP 5

The screw holes needed to attach the wood panel (supplied by the customer) are shown below.



STEP 6

Loosely attach the new wood panel at these 4 corners with #10 x 3/4" wood screws. After alignment is satisfied, attach the handle (supplied by customer) and install and tighten all remaining screws.

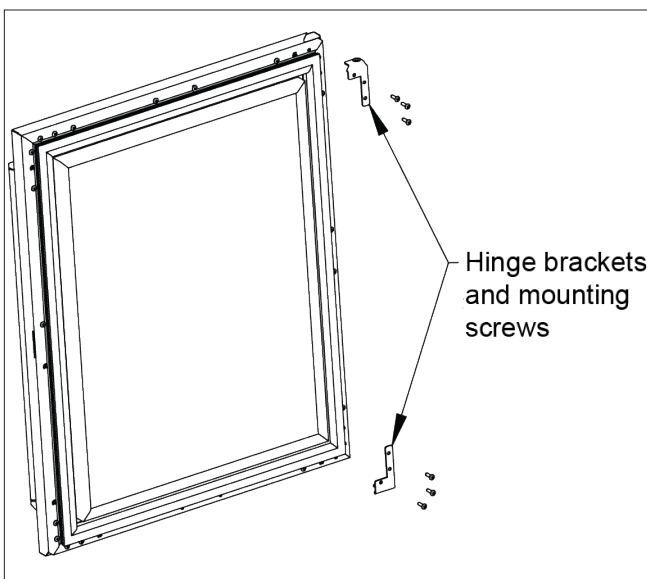


CAUTION

Do not overtighten wood overlay attachment screws, as this may damage the metal frame. Installation by hand (not with a drill) is recommended.

STEP 7

Reinstall the top and bottom hinge brackets removed in Step 2. Reattach the door in the reverse order as removed in Step 1.



STEP 8

Verify the alignment of the door once more.





REASSEMBLY *(continued)*

STEP 9

When reinstalling the gasket, make sure the dart is pressed inside the channel in the metal door frame. Start at the 4 corners and firmly press inwards.



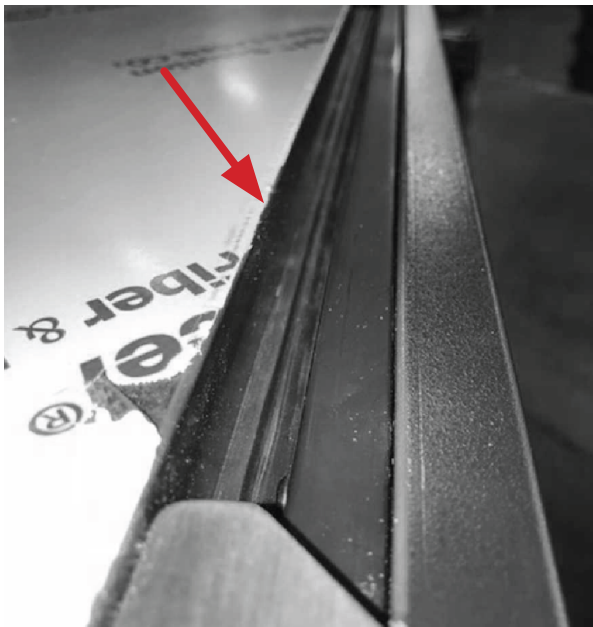
STEP 10

Verify the gasket is fully seated onto the metal door frame when completed.



STEP 11

With the door closed, verify the gasket is completely sealing around the cabinet frame.



NOTES:

The procedure for glass door and drawer models is the same.

Use and Care Manuals, Wood Overlay Templates, etc., are available on the Hestan website below:

www.hestanhome.com

Hestan Commercial Corporation

3375 E. La Palma Ave.
Anaheim, CA 92806
(888) 905-7463