



HESTAN **PRICE LIST**

Effective April 1, 2022

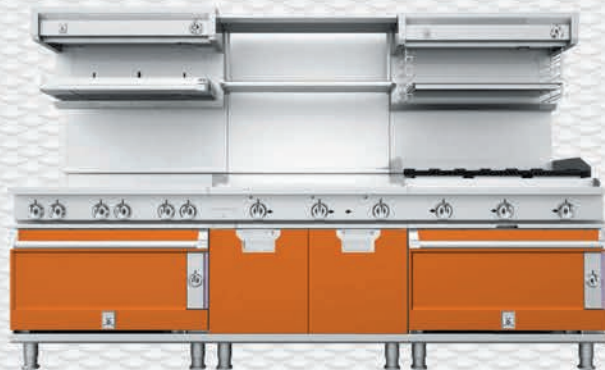


**DO YOUR JOB.
DO IT WELL.**

Thomas Keller
Chef Thomas Keller

When it came time to renovate The French Laundry kitchen, I knew exactly what I needed to elevate its form and function. So did Hestan Commercial. They spent years working alongside – and listening to – chefs. Then they built the Hestan kitchen around the way we actually cook. Every detail designed to elevate performance. Every burner, hinge and knob engineered to withstand the rigors of a real kitchen. This purpose-built design has already earned two Kitchen Innovations awards. That's the power of collaboration. That's the beauty of Hestan.

hestancommercial.com





Hestan is the award-winning culinary brand renowned for creating the market's most advanced, powerful and versatile commercial kitchen equipment, premium outdoor, and now a new indoor line of appliances. Founded by culinary icons Stanley Cheng and Eric Deng, and backed by some of the industry's most inventive and forward-thinking chefs and engineers, Hestan is forging new ground with visionary technologies and products. Headquartered in the heart of Southern California in a 130,000-square-foot, state-of-the-art manufacturing facility that includes a showroom, test kitchen and innovation lab, Hestan is led by a collaborative team of industry mavericks who bring together over 200 years of combined experience to create thoughtfully designed products that respond intelligently to the needs of the end user. Equipping the kitchens of acclaimed restaurateurs and Michelin-starred chefs such as Thomas Keller, as well as the legendary Culinary Institute of America, Hestan is setting the pace of the culinary evolution with products that provide the confidence and comfort of the highest quality materials and top craftsmanship. For more information, visit www.hestan.com.



TABLE OF CONTENTS

TERMS AND CONDITIONS	4
WARRANTY POLICY	5
HESTAN READY-MADE PROGRAM	6
SEALED & OPEN BURNER RANGETOPS	7
SPLIT TOPS	9
STEP UPS	9
CHARBROILERS	10
FRENCH TOPS	12
HOT TOPS	12
THERMOSTATIC & MANUAL GRIDDLES	13
PLANCHAS	15
WORK TOPS	16
OVENS & PASS-THROUGH OVENS	17
UPRIGHT CONVECTION OVENS	18
CABINET BASES	19
COUNTER HEIGHT UNITS	21
REFRIGERATED & FREEZER BASES	22
SAUTE STATIONS - GAS & INDUCTION	23
WINE COLUMNS	24
FRYERS & DUMP STATIONS	25
PASTA COOKERS	26
CHEESEMELTERS	27
SALAMANDERS	28
RISERS & SHELVES	29
OPTIONS & ACCESSORIES	33

TERMS AND CONDITIONS

TERMS

Net 30 days following the date of invoice, once credit is established. A service charge of 2.0% per month will be charged on any unpaid balance over 30 days.

PRICES

All prices are stated in US dollars and are subject to change without notice. Prices do not include sales or other state, province, federal, or local taxes. Prices are limited to purchases shipped within the US and Canada. Requests for shipments to other countries should be referred to Hestan Commercial Sales Department. All prices include manufacturer's warranty.

FREIGHT

Orders of net \$35,000 or more will be shipped freight prepaid. Orders of less than net \$35,000 will be shipped freight paid and amount added to the invoice. All shipments are FOB Anaheim, California, USA.

ORDER

All orders are subject to Hestan Commercial Corporation acceptance and are not binding until acceptance. They are accepted subject to acts of God, acts of government or other causes, strikes, walkouts, accidents, fires, delays in manufacturing or transportation of materials, or other causes beyond control of the manufacturer.

CHANGES, RETURNS, OR CANCELLATIONS

Additional costs incurred due to changes requested after production has begun will be charged back to the customer. Custom or special items are not subject to change, cancellation, or return once production has begun, including (but not limited to) colored/painted parts, mirrored finished plates, and grooved plates.

Orders cannot be returned without prior written authorization. Prepaid freight will be required for all authorized return for credit. Authorized returns are subject to a 30% restocking charge or costs needed for reconditioning, whichever is greater. No return will be accepted after 60 days from the date of invoice. Returned equipment must be received within thirty (30) days from authorization date.

Authorized cancellations are subject to a 30% cancellation fee, plus any other costs to recondition the equipment.

SHIPMENT

Title passes to the consignee and the manufacturer's responsibility ceases when the order is accepted by the carrier. Upon acceptance, the carrier assumes full responsibility for transportation of the products.

FREIGHT DAMAGE

Should the products arrive in a damaged condition, apparent or concealed, a claim for damages must be made by the customer with the carrier. **DO NOT REFUSE DAMAGED SHIPMENT.** Notify the carrier agent. Make notes of damages on delivery receipt before accepting shipment, charges are paid, or prepaid freight shipments are accepted. Failure to do so may result in the carrier refusing to honor your claim.

In case of concealed damage, save all packaging and immediately notify the carrier with your findings and intention to file a concealed damage claim. You must make a request for inspection within fifteen (15) days of delivery. The carrier will furnish you with the inspection report and necessary documents for filing a concealed damage claim.

Shipments directly from Hestan Commercial should be handled the same. Notify the appropriate Hestan Commercial service representative immediately of any damages or discrepancies.

All orders of replacement products or parts due to freight damage will be invoiced under regular terms.

Reimbursement or credit due to freight damage will come from the carrier.

WILL CALL AND DELAYED SHIPMENT

Will call orders must be picked up within 24 hours from notification of completion. Any will call order failed to be picked up after 24 hours from notification will be charged a storage fee of \$160 per pallet per day.

Completed orders must be picked up within three (3) business days from notification of completion. Any completed order failed to be picked up after the third day from notification will be charged a storage fee of \$160 per pallet per day.

**Hestan Commercial products are not approved or recommended for residential use.
Hestan Commercial Corporation reserves the right to change materials and specifications without notice.**

FOUR YEAR LIMITED WARRANTY

This Four Year Limited Warranty is provided by Hestan Commercial Corporation ("HCC"). It applies exclusively to the original purchaser ("Purchaser") of a new HCC Product ("Product") who takes title directly from an HCC authorized dealer, provided the Product has been purchased and installed in the United States or Canada. No oral or written representation or commitment given by anyone, including but not limited to, an employee, representative or agent of HCC will create a warranty or in any way increase the scope of this express Limited Warranty.

To obtain warranty service, the Purchaser must contact the dealer from whom the Product was purchased, an authorized agent or representative of the Hestan Commercial Service Network or HCC (see owner's manual, provided with Product, for contact information).

STANDARD FOUR YEAR TERM:

The overall term of this Limited Warranty is four years. During the warranty period, operating parts are warranted to the original Purchaser not to fail as a result of defects in design, materials, or workmanship during normal use. The four year period begins on the date of installation, or the date which is six months after the date of manufacture, whichever comes first. To determine when the Product was manufactured, check the serial number. The first four numbers represent the year and month of manufacture. There are exceptions to the four year length of this Limited Warranty, which may reduce or extend the period of warranty, as described below.

EXCEPTIONS TO FOUR YEAR TERM:

The following parts have more than, or less than, a four year warranty period. Irrespective of when the period ends, the period starts at the time described in the paragraph above.

Exception #1, Lifetime Warranty. The Product's stainless steel rod grates, brass burner heads (sealed burner), and welded steel frame have a limited warranty, to the original Purchaser, which does not expire.

Exception #2, Two Years, Plus an Additional Two Years Parts Only. The Product's compressor and evaporator have a limited warranty, to the original Purchaser, of two years. As well, for an additional two years thereafter, these parts bear an additional limited warranty, to the original Purchaser, for replacement of the defective part only.

Exception #3, Two Years. The Product's electrical components, convection fan motor, switches, capacitors, wiring, and stainless steel char broiler radiants, have a limited warranty, to the original Purchaser, of two years.

Exception #4, Six Months. The Product's cast iron grate, radiant, and briquettes have a limited warranty, to the original Purchaser, of six months.

Exception #5, Three Months. The Product's glass parts (including light bulbs), painted items, door gaskets, and decorative items, have a limited warranty, to the original Purchaser, of three months.

WHAT THE LIMITED WARRANTY COVERS:

If the limited warranty applies, HCC agrees to repair or replace, at HCC's option, the above warranted parts or items that fail due to defects in design, materials or workmanship during the warranted period. The limited warranty is only for the original Purchaser, and only applies in instances of normal use.

WHAT THE LIMITED WARRANTY DOES NOT COVER:

By way of example and not limitation, this Limited Warranty does not cover and HCC will not be responsible for and will not pay for: color variations in color finishes, failure or damage from abuse, accident, fire, natural disaster, loss of electrical power or gas supply to the Product, alteration, outdoor use, improper installation, improper operation, improper repair or replacement, service by someone other than an authorized agent or representative of the Hestan Commercial Service Network, exposing the Product to a corrosive atmosphere containing chlorine, fluorine, or any other damaging chemicals or not providing normal care and maintenance.

EXERCISING THE LIMITED WARRANTY:

PURCHASER'S SOLE REMEDY UNDER THIS LIMITED WARRANTY IS REPAIR OR REPLACEMENT OF THE DEFECTIVE PART. Purchaser is responsible for making the Product reasonably accessible for service or for paying the cost to make the Product reasonably accessible for service. Service is to be provided during normal business hours of the authorized Hestan Commercial Service Provider. The difference between regular rates and overtime or premium rates will be paid by the Purchaser. Purchaser is to pay the costs related to travel beyond 50 miles (one way) from the nearest authorized Hestan Commercial Service Provider.

IMPORTANT DISCLAIMERS:

EXCEPT AS EXPRESSLY SET FORTH IN THIS LIMITED WARRANTY, THE PRODUCT IS PROVIDED TO PURCHASER "AS IS". THIS LIMITED WARRANTY IS EXCLUSIVE AND IN LIEU OF ALL OTHER WARRANTIES, EXPRESS OR IMPLIED, INCLUDING BUT NOT LIMITED TO ANY IMPLIED WARRANTIES OF MERCHANTABILITY OR FITNESS FOR A PARTICULAR PURPOSE OR OTHER STATUTORY WARRANTIES, WHICH WARRANTIES ARE EXPRESSLY DISCLAIMED HEREBY. ANY IMPLIED WARRANTIES WHICH MAY NOT BE DISCLAIMABLE BY STATUTE WILL LAST ONLY FOR THE TERM OF THE EXPRESS LIMITED WARRANTY CONTAINED HEREIN. IN NO EVENT WILL THIS LIMITED WARRANTY BE CONSTRUED TO COVER, NOR WILL HCC BE LIABLE TO PURCHASER OR ANY OTHER PERSON FOR, ANY CONSEQUENTIAL, INCIDENTAL, ECONOMIC, DIRECT, INDIRECT, GENERAL OR SPECIAL DAMAGES, WHICH ARE HEREBY EXPRESSLY DISCLAIMED.

Some states do not allow the exclusion or limitation of incidental or consequential damages or do not allow limitations on how long an implied warranty or condition lasts, so the above limitations or exclusions may not apply to you.

Any questions about this Limited Warranty may be directed to Hestan Commercial Products at (888) 905-7463.

HESTAN READY-MADE PROGRAM



How to order:

- Email hccorders@hestan.com.
- Please clearly mark "Hestan Ready-Made Program" on purchase order(s).

Ready-Made Standards:

- Charbroiler with cast-iron grates and stainless steel radiant only.
- Stainless steel exterior finish only.*
- 9" tall low flue riser.*
- 4-5" plate shelf.*
- Intended for orders of less than 4 pieces of product only.*

Please specify:

- Natural gas (NG) or liquid propane (LP).
- Legs or casters.
- Inter-plumb kit (AHIP) available for range-mount salamander and cheesemelter.
- All rangetops offered are also available as countertop models - simply add 4" countertop lag kit (AHCL).



CONTACT US: www.hestancommercial.com

READY-MADE

Products ship 3-5 days after order is placed

Model	Description
HOP366/HSOP36	36" Range - Open Burner Rangetop with Standard Oven
HOP366/HCOP36	36" Range - Open Burner Rangetop with Convection Oven
HSP366/HSOP36	36" Range - Sealed Burner Rangetop with Standard Oven
HSP366/HCOP36	36" Range - Sealed Burner Rangetop with Convection Oven
HOP366	36" Rangetop - Open Burner
HSP366	36" Rangetop - Sealed Burner
HSOP366	36" Oven - Standard
HCOP366	36" Oven - Convection
HSMR36	36" Salamander - Range Mount
HSMW36	36" Salamander - Wall Mount
HCMR36	36" Cheesemelter - Range Mount
HCMW36	36" Cheesemelter - Wall Mount
HFT361	36" Frenchtop - 1 Top Assembly
HFT362	36" Frenchtop - 2 Top Assembly
HCH36	36" Charbroiler
HTG36	36" Griddle - Thermostatic
HMG36	36" Griddle - Manual
HCB36	36" Cabinet Base

Please be advised that the Hestan Ready-Made Program will not allow any customization or modification to the products listed. If your order includes other products that are not on this list, the schedule/availability will be affected.

Availability and Shipping:

- Add 1 - 2 additional ship days for LP units, or for elevations above 2,000 feet.
- Quantities higher than 2 per SKU may result in adjustment in lead time.
- Free freight in the continental US on orders over \$6,000 net (special delivery services not included).

*Consult factory for other options; extended lead times may be applicable.

phone 888.905.7463 3375 E. La Palma Ave., Anaheim, CA 92806

SEALED BURNERS



- High performance burner system with Sealed Dual Flow burners and/or Sealed Single Flow burners.
- Combined Ring at 30,000 Btu/hour for optimum cooking & searing performance.
- Cast brass lift-off burner cap and base for easy cleaning.
- Stainless steel fully sealed burner bowl for easy cleaning.
- Stainless steel, high polished, 1/2" diameter rod grates
- Single point re-ignition direct spark (SB) or Standing pilot systems (SP)

Model Number	Description	List Price	Rate (Btu/hr)	Weight (lb)
HSB122	12" width 2-burner All Single Flow Sealed Burners	\$3,740	60,000	80
HSB182	18" width 2-burner All Single Flow Sealed Burners	\$5,600	60,000	100
HSB244	24" width 4-burner All Single Flow Sealed Burners	\$7,180	120,000	150
HSB364	36" width 4-burner All Single Flow Sealed Burners	\$10,050	120,000	180
HSB365	36" width 5-burner All Single Flow Sealed Burners	\$10,770	150,000	200
HSB366	36" width 6-burner All Single Flow Sealed Burners	\$11,490	180,000	220
HSP122	12" width 2-burner All Single Flow Sealed Burners with Standing Pilot	\$3,330	60,000	80
HSP182	18" width 2-burner All Single Flow Sealed Burners with Standing Pilot	\$5,290	60,000	100
HSP244	24" width 4-burner All Single Flow Sealed Burners with Standing Pilot	\$6,500	120,000	150
HSP364	36" width 4-burner All Single Flow Sealed Burners with Standing Pilot	\$10,270	120,000	180
HSP365	36" width 5-burner All Single Flow Sealed Burners with Standing Pilot	\$11,180	150,000	200
HSP366	36" width 6-burner All Single Flow Sealed Burners with Standing Pilot	\$11,480	180,000	220

Options and Accessories

AHSSG122	12" width Sealed Rangetop 2-burner SS Grates	Standard
AHSSG182	18" width Sealed Rangetop 2-burner SS Grates	Standard
AHSSG244	24" width Sealed Rangetop 4-burner SS Grates	Standard
AHSSG364	36" width Sealed Rangetop 4-burner SS Grates	Standard
AHSSG365	36" width Sealed Rangetop 5-burner SS Grates	Standard
AHSSG366	36" width Sealed Rangetop 6-burner SS Grates	Standard
AHWR	Wok Ring	\$420
AHAFK	Adjustable Fill Kit	\$650

OPEN BURNERS



- 35,000 Btu/hour per burner for optimum cooking & searing performance.
- Cast brass lift-off burner cap and base for easy cleaning.
- Stainless steel drop-in burner pan(s) to catch 90%+ of spills
- Stainless steel lower drip tray pull out for easy cleaning
- Stainless steel, high polished, 1/2" diameter rod grates
- Brass standing pilot system resistant to plugs from drippings

Model Number	Description	List Price	Rate (Btu/hr)	Weight (lb)
HOP122	12" width 2-burner Open Burners with Standing Pilot	\$2,970	70,000	80
HOP182	18" width 2-burner Open Burners with Standing Pilot	\$4,730	70,000	100
HOP244	24" width 4-burner Open Burners with Standing Pilot	\$5,800	140,000	150
HOP364	36" width 4-burner Open Burners with Standing Pilot	\$9,170	140,000	180
HOP366	36" width 6-burner Open Burners with Standing Pilot	\$10,260	210,000	220

Options and Accessories

AHSSG122	12" width Sealed Rangetop 2-burner SS Grates	Standard
AHSSG182	18" width Sealed Rangetop 2-burner SS Grates	Standard
AHSSG244	24" width Sealed Rangetop 4-burner SS Grates	Standard
AHSSG364	36" width Sealed Rangetop 4-burner SS Grates	Standard
AHSSG365	36" width Sealed Rangetop 5-burner SS Grates	Standard
AHSSG366	36" width Sealed Rangetop 6-burner SS Grates	Standard
AHWR	Wok Ring	\$420

SPLIT TOPS



- High performance burner system with front Sealed Single Flow burners, cast brass lift-off burner cap and base for easy cleaning.
- 25,000 Btu/hour per burner for optimum cooking performance.
- Front stainless steel fully sealed burner bowl for easy cleaning.
- Stainless steel, high polished, 1/2" diameter rod grates
- Heavy duty 3/8" thick rear steel plate
- Standing pilot system

Model Number	Description	List Price	Rate (Btu/hr)	Weight (lb)
HST244	24" width 2-12" Split Top	\$9,330	100,000	185
HST364	36" width 2-18" Split Top	\$12,210	100,000	220
HST366	36" width 3-12" Split Top	\$13,790	150,000	260

Options and Accessories

AHSSGS244	24" width Split Top 4-burner SS Grates	Standard
AHSSGS364	36" width Split Top 4-burner SS Grates	Standard
AHSSGS366	36" width Split Top 6-burner SS Grates	Standard

STEP UPS



- High performance burner system with Sealed Single Flow burners.
- 25,000 Btu/hour per burner for optimum cooking and searing performance.
- Cast brass lift-off burner cap and base for easy cleaning.
- Stainless steel fully sealed burner bowl for easy cleaning.
- Stainless steel, high polished, 1/2" diameter rod grates
- Single point re-ignition direct spark system (SU) or Standing pilot system (SUP)
- Rear burners are raised by 5.5"

Model Number	Description	List Price	Rate (Btu/hr)	Weight (lb)
HSU244	24" width 2-12" Step Up	\$10,770	100,000	170
HSU366	36" width 3-12" Step Up	\$13,630	150,000	240
HSUP244	24" width 2-12" Step Up with Standing Pilot	\$10,770	100,000	170
HSUP366	36" width 3-12" Step Up with Standing Pilot	\$13,630	150,000	240

Options and Accessories

AHSSGE244	24" width Step Up 4-burner SS Grates	Standard
AHSSGE366	36" width Step Up 6-burner SS Grates	Standard

CHARBROILERS



- High performance, top-grade stainless steel tubular burner, each up to 40,000 Btu/hour, per 12" wide section.
- Reversible cast iron broiler grate.
- Cantilevered stainless steel cooking system: each section can be individually adjusted vertically at 3 broiling positions. Low profile design to allow island installation.
- Standard Marine Grade 12GA stainless steel radiant for even heat distribution.

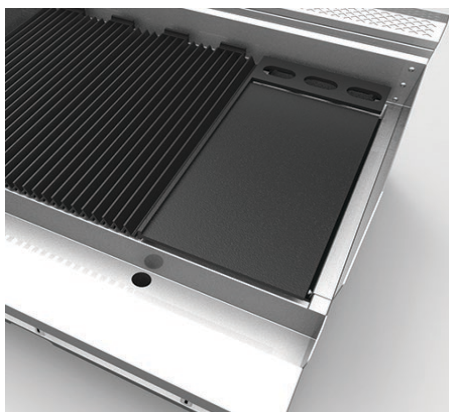
Model Number	Description	List Price	Rate (Btu/hr)	Weight (lb)
HCH18	18" width Char Broiler	\$10,900	60,000	200
HCH24	24" width Char Broiler	\$12,460	80,000	250
HCH30	30" width Char Broiler	\$13,350	100,000	300
HCH36	36" width Char Broiler	\$14,710	120,000	360
HCH48	48" width Char Broiler	\$17,430	160,000	500
HCH60	60" width Char Broiler	\$19,340	200,000	620
HCH72	72" width Char Broiler	\$21,240	240,000	720

Options and Accessories

AHCCG18	18" width Char Broiler Cast Iron Grates	Standard
AHCCG24	24" width Char Broiler Cast Iron Grates	Standard
AHCCG30	30" width Char Broiler Cast Iron Grates	Standard
AHCCG36	36" width Char Broiler Cast Iron Grates	Standard
AHCCG48	48" width Char Broiler Cast Iron Grates	Standard
AHCCG60	60" width Char Broiler Cast Iron Grates	Standard
AHCCG72	72" width Char Broiler Cast Iron Grates	Standard
AHCSG18	18" width Char Broiler SS Grates	\$250
AHCSG24	24" width Char Broiler SS Grates	\$490
AHCSG30	30" width Char Broiler SS Grates	\$620
AHCSG36	36" width Char Broiler SS Grates	\$780
AHCSG48	48" width Char Broiler SS Grates	\$990
AHCSG60	60" width Char Broiler SS Grates	\$1,020
AHCSG72	72" width Char Broiler SS Grates	\$1,280
AHCSR18	18" width Char Broiler SS Radiants	Standard
AHCSR24	24" width Char Broiler SS Radiants	Standard
AHCSR30	30" width Char Broiler SS Radiants	Standard
AHCSR36	36" width Char Broiler SS Radiants	Standard
AHCSR48	48" width Char Broiler SS Radiants	Standard
AHCSR60	60" width Char Broiler SS Radiants	Standard
AHCSR72	72" width Char Broiler SS Radiants	Standard

CHARBROILERS

Model Number	Description	List Price	Rate (Btu/hr)	Weight (lb)
Options and Accessories				
AHCSS18	18" width Char Broiler 5" tall Side and Rear Splash	\$750		
AHCSS24	24" width Char Broiler 5" tall Side and Rear Splash	\$810		
AHCSS30	30" width Char Broiler 5" tall Side and Rear Splash	\$880		
AHCSS36	36" width Char Broiler 5" tall Side and Rear Splash	\$960		
AHCSS48	48" width Char Broiler 5" tall Side and Rear Splash	\$1,020		
AHCSS60	60" width Char Broiler 5" tall Side and Rear Splash	\$1,080		
AHCSS72	72" width Char Broiler 5" tall Side and Rear Splash	\$1,160		
AHCSP12	12" width Char Broiler Searing Plate	\$1,130		
AHCSP18	18" width Char Broiler Searing Plate	\$1,700		



FRENCH TOPS



- Powerful cast iron lift-off burner system rated at 35,000 Btu/hour.
- Heavy duty stainless steel radiant with designed to dramatically increase efficiency and plate temperature - 980°F+ at the center of the ring.
- Tri-Ferrous dual ring inserts (2) are centered (front-to-back) for maximum temperature gradient.
- Heavy duty 3/8" thick fully welded steel plate for maximum heat retention and optimal temperature gradient.

Model Number	Description	List Price	Rate (Btu/hr)	Weight (lb)
HFT18	18" width French Top	\$6,320	35,000	250
HFT24	24" width French Top	\$9,470	35,000	350
HFT361	36" width French Top	\$11,910	35,000	450
HFT362	36" width 2-burner French Top	\$12,350	70,000	500

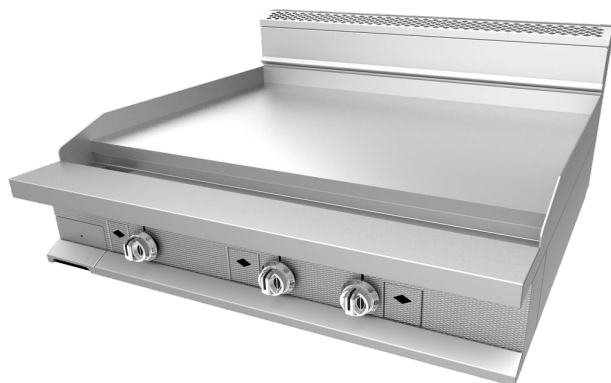
HOT TOPS



- High performance stainless steel tubular burner up to 40,000 Btu/hour for powerful even heat distribution throughout.
- Heavy duty 3/8" thick steel plate (12" or 18" wide).
- Stainless steel drip tray for easy cleaning.
- Available in 12", 18", 24", and 36" wide configurations.
- Standing pilot ignition system with front accessible pilot adjustment.

Model Number	Description	List Price	Rate (Btu/hr)	Weight (lb)
HHT12	12" width Hot Top	\$4,320	30,000	150
HHT18	18" width Hot Top	\$6,040	40,000	250
HHT242	24" width 2 Hot Top	\$7,750	60,000	300
HHT363	36" width 3 Hot Top	\$11,770	80,000	420
HHT362	36" width 2 Hot Top	\$11,850	90,000	470

THERMOSTATIC & MANUAL GRIDDLES



- Heavy duty 1" thick Blanchard ground steel griddle plate
- High performance, top grade stainless steel tubular burner, each up to 25,000 Btu/hour, per 12" wide section.
- Each burner is controlled thermostatically with a combination safety valve, or manually with a infinite manual valve.
- 2" high stainless steel splash guard (sides and rear).
- Stainless steel front grease trough.
- Available from 12" to 72" wide configurations.

Model Number	Description	List Price	Rate (Btu/hr)	Weight (lb)
HTG12	12" width Thermostatic Griddle	\$6,080	16,500	150
HTG18	18" width Thermostatic Griddle	\$7,880	25,000	200
HTG24	24" width Thermostatic Griddle	\$10,220	50,000	275
HTG30	30" width Thermostatic Griddle	\$12,280	62,500	300
HTG36	36" width Thermostatic Griddle	\$14,920	75,000	360
HTG48	48" width Thermostatic Griddle	\$17,480	100,000	540
HTG60	60" width Thermostatic Griddle	\$20,020	125,000	600
HTG72	72" width Thermostatic Griddle	\$22,820	150,000	720

HMG12	12" width Manual Griddle	\$4,610	16,500	150
HMG18	18" width Manual Griddle	\$6,470	25,000	200
HMG24	24" width Manual Griddle	\$8,350	50,000	275
HMG30	30" width Manual Griddle	\$10,080	62,500	300
HMG36	36" width Manual Griddle	\$11,410	75,000	360
HMG48	48" width Manual Griddle	\$14,480	100,000	540
HMG60	60" width Manual Griddle	\$18,150	125,000	600
HMG72	72" width Manual Griddle	\$21,960	150,000	720

Options and Accessories

AHGPS12S	12" width Standard Griddle Plate w/ Standard Side Splash	Standard
AHGPS18S	18" width Standard Griddle Plate w/ Standard Side Splash	Standard
AHGPS24S	24" width Standard Griddle Plate w/ Standard Side Splash	Standard
AHGPS30S	30" width Standard Griddle Plate w/ Standard Side Splash	Standard
AHGPS36S	36" width Standard Griddle Plate w/ Standard Side Splash	Standard
AHGPS48S	48" width Standard Griddle Plate w/ Standard Side Splash	Standard
AHGPS60S	60" width Standard Griddle Plate w/ Standard Side Splash	Standard
AHGPS72S	72" width Standard Griddle Plate w/ Standard Side Splash	Standard
AHGPS12T	12" width Standard Griddle Plate w/ Tall Side Splash	\$170
AHGPS18T	18" width Standard Griddle Plate w/ Tall Side Splash	\$210
AHGPS24T	24" width Standard Griddle Plate w/ Tall Side Splash	\$250
AHGPS30T	30" width Standard Griddle Plate w/ Tall Side Splash	\$290
AHGPS36T	36" width Standard Griddle Plate w/ Tall Side Splash	\$340
AHGPS48T	48" width Standard Griddle Plate w/ Tall Side Splash	\$390

THERMOSTATIC & MANUAL GRIDDLES

Model Number	Description	List Price
AHGPS60T	60" width Standard Griddle Plate w/ Tall Side Splash	\$440
AHGPS72T	72" width Standard Griddle Plate w/ Tall Side Splash	\$470
AHGPM12S	12" width Mirrored Griddle Plate w/ Standard Side Splash	\$640
AHGPM18S	18" width Mirrored Griddle Plate w/ Standard Side Splash	\$960
AHGPM24S	24" width Mirrored Griddle Plate w/ Standard Side Splash	\$1,260
AHGPM30S	30" width Mirrored Griddle Plate w/ Standard Side Splash	\$1,580
AHGPM36S	36" width Mirrored Griddle Plate w/ Standard Side Splash	\$1,880
AHGPM48S	48" width Mirrored Griddle Plate w/ Standard Side Splash	\$2,530
AHGPM60S	60" width Mirrored Griddle Plate w/ Standard Side Splash	\$3,160
AHGPM72S	72" width Mirrored Griddle Plate w/ Standard Side Splash	\$3,790
AHGPM12T	12" width Mirrored Griddle Plate w/ Tall Side Splash	\$810
AHGPM18T	18" width Mirrored Griddle Plate w/ Tall Side Splash	\$1,170
AHGPM24T	24" width Mirrored Griddle Plate w/ Tall Side Splash	\$1,550
AHGPM30T	30" width Mirrored Griddle Plate w/ Tall Side Splash	\$1,900
AHGPM36T	36" width Mirrored Griddle Plate w/ Tall Side Splash	\$2,260
AHGPM48T	48" width Mirrored Griddle Plate w/ Tall Side Splash	\$3,010
AHGPM60T	60" width Mirrored Griddle Plate w/ Tall Side Splash	\$3,610
AHGPM72T	72" width Mirrored Griddle Plate w/ Tall Side Splash	\$4,370
AHGPG12S	12" width Grooved Griddle Plate w/ Standard Side Splash	\$2,060
AHGPG18S	18" width Grooved Griddle Plate w/ Standard Side Splash	\$3,010
AHGPG24S	24" width Grooved Griddle Plate w/ Standard Side Splash	\$3,830
AHGPG30S	30" width Grooved Griddle Plate w/ Standard Side Splash	\$4,790
AHGPG36S	36" width Grooved Griddle Plate w/ Standard Side Splash	\$5,820
AHGPG48S	48" width Grooved Griddle Plate w/ Standard Side Splash	\$7,750
AHGPG60S	60" width Grooved Griddle Plate w/ Standard Side Splash	\$9,680
AHGPG72S	72" width Grooved Griddle Plate w/ Standard Side Splash	\$11,620
AHGPG12T	12" width Grooved Griddle Plate w/ Tall Side Splash	\$2,120
AHGPG18T	18" width Grooved Griddle Plate w/ Tall Side Splash	\$3,240
AHGPG24T	24" width Grooved Griddle Plate w/ Tall Side Splash	\$4,140
AHGPG30T	30" width Grooved Griddle Plate w/ Tall Side Splash	\$5,200
AHGPG36T	36" width Grooved Griddle Plate w/ Tall Side Splash	\$6,150
AHGPG48T	48" width Grooved Griddle Plate w/ Tall Side Splash	\$8,210
AHGPG60T	60" width Grooved Griddle Plate w/ Tall Side Splash	\$10,120
AHGPG72T	72" width Grooved Griddle Plate w/ Tall Side Splash	\$12,110

PLANCHA

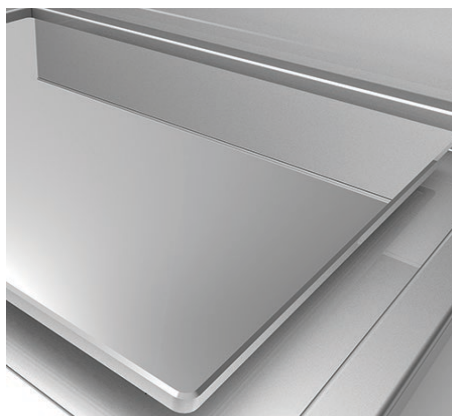


- Heavy duty 3/4" thick steel Plancha plate with Blanchard grind finish.
- High performance lift-off cast iron burner at 30,000 Btu/hour for maximum plate temperature.
- Stainless steel 4-sided grease trough with diverter system for easy cleaning.
- Under-plate flue system for island installation.
- Each burner manually controlled.
- Available from 18" to 36" wide configurations.

Model Number	Description	List Price	Rate (Btu/hr)	Weight (lb)
HPG18	18" width Plancha Griddle	\$8,970	30,000	200
HPG24	24" width Plancha Griddle	\$10,990	30,000	280
HPG30	30" width Plancha Griddle	\$12,910	30,000	320
HPG36	36" width Plancha Griddle	\$15,360	60,000	360

Options and Accessories

AHPPS18	18" width Standard Plancha Plate	Standard
AHPPS24	24" width Standard Plancha Plate	Standard
AHPPS30	30" width Standard Plancha Plate	Standard
AHPPS36	36" width Standard Plancha Plate	Standard
AHPPM18	18" width Mirrored Plancha Plate	\$980
AHPPM24	24" width Mirrored Plancha Plate	\$1,290
AHPPM30	30" width Mirrored Plancha Plate	\$1,580
AHPPM36	36" width Mirrored Plancha Plate	\$1,900



WORK TOPS



- Heavy gauge welded body construction
- Sound insulated work top surface
- Available from 12" to 48" wide configurations
- Stainless steel front, sides, bottom, and 4.5" plate shelf
- 9" tall Low Riser

Model Number	Description	List Price	Weight (lb)
HWT12	12" width Work Top	\$2,190	80
HWT18	18" width Work Top	\$2,330	100
HWT24	24" width Work Top	\$2,640	150
HWT30	30" width Work Top	\$2,820	165
HWT36	36" width Work Top	\$2,960	180
HWT48	48" width Work Top	\$3,240	200



OVENS



- High performance stainless steel tubular U-burner at 40,000 Btu/hour.
- Counter-weight oven door hinge system with hydraulic soft opening capability.
- 28" W x 27" D x 14.5" H heavy duty stainless steel oven cavity interior with flame spreader for even heat distribution throughout.
- Direct vent flue with standard heat exchanger system for maximum heat transfer from gas burner

Model Number	Description	List Price	Rate (Btu/hr)	Weight (lb)
HSO36	36" width Single Standard Oven Base	\$10,190	40,000	465
HCO36	36" width Single Convection Oven Base	\$15,650	40,000	485
HSOP36	36" width Single Standard Oven Base with Standing Pilot	\$9,090	40,000	465
HCOP36	36" width Single Convection Oven Base with Standing Pilot	\$14,220	40,000	485

Options and Accessories

AHOR36	36" width Oven Rack	\$280
--------	---------------------	-------

PASS-THROUGH OVENS



- Access from both sides of oven - ideal for single depth cooking suite applications
- High performance stainless steel tubular U-burner at 32,000 Btu/hour.
- Dual counter-weight oven door hinge system with soft opening capability.
- 27" W x 34" D x 14.5" H heavy duty stainless steel oven cavity interior with flame spreader for even heat distribution throughout.
- Low-profile high efficiency convection motor for pass-

Model Number	Description	List Price	Rate (Btu/hr)	Weight (lb)
HPSOP36	36" width Single Standard Pass-Through Oven Base with Standing Pilot	\$16,540	32,000	600
HPCOP36	36" width Single Convection Pass-Through Oven Base with Standing Pilot	\$21,190	32,000	600

UPRIGHT CONVECTION OVENS



- High performance dual stainless steel tubular burners at 35,000 Btu/hour.
- Heavy duty oven door design with 3 brass bushing per door hinge for optimized door alignment
- Heavy duty 2-speed low-profile high efficiency front serviceable convection motor
- 29" W x 22.5" D x 22.5" H heavy duty oven cavity - porcelain interior for ease of cleaning
- Electric thermostat adjusting oven temperature from 150F to 500F

Model Number	Description	List Price	Rate (Btu/hr)	Weight (lb)
HUCOR	Single Deck Upright Convection Oven w/ RH Door Window	\$17,650	70,000	520
HUCOL	Single Deck Upright Convection Oven w/ LH Door Window	\$17,650	70,000	520
HUCOD	Single Deck Upright Convection Oven w/ Double Door Window	\$17,970	70,000	520
HUCOS	Single Deck Upright Convection Oven with No Window	\$17,010	70,000	520
HUCOR2	Double Deck Upright Convection Oven w/ RH Door Window	\$32,080	140,000	1005
HUCOL2	Double Deck Upright Convection Oven w/ LH Door Window	\$32,080	140,000	1005
HUCOD2	Double Deck Upright Convection Oven with Double Door Window	\$33,370	140,000	1005
HUCOS2	Double Deck Upright Convection Oven with No Window	\$31,120	140,000	1005

Options and Accessories

AHUL4	4 Upright Double Convection Ovens 6" Legs Kit	No Charge
AHUC4	4 Upright Double Convection Ovens 6" Casters Kit	\$850
HUCOEL	Extended Legs, Upright Single Convection Oven	No Charge
AHUOR	Upright Convection Oven Rack	\$350
AHUDV	Upright Convection Oven Direct Vent Connection Kit	\$470

CABINET BASES



- Heavy duty modular cabinet bases available in various configurations: open (CB), with single or double doors (CD, CDL, CDR), and with drawer (CR).
- Available from 12" to 48" wide configurations
- Heavy gauge welded body construction

Model Number	Description	List Price	Weight (lb)
HCB12	12" width Cabinet Base	\$2,550	50
HCB18	18" width Cabinet Base	\$2,960	80
HCB24	24" width Cabinet Base	\$3,390	100
HCB30	30" width Cabinet Base	\$4,090	125
HCB36	36" width Cabinet Base	\$4,930	150
HCB48	48" width Cabinet Base	\$6,630	200
HCDL12	12" width LH Cabinet Base with Door	\$3,100	65
HCDR12	12" width RH Cabinet Base with Door	\$3,100	65
HCDL18	18" width LH Cabinet Base with Door	\$3,740	95
HCDR18	18" width RH Cabinet Base with Door	\$3,740	95
HCDL24	24" width LH Cabinet Base with Door	\$4,650	120
HCDR24	24" width RH Cabinet Base with Door	\$4,650	120
HCD30	30" width Cabinet Base with Doors	\$5,640	150
HCD36	36" width Cabinet Base with Doors	\$6,410	180
HCD48	48" width Cabinet Base with Doors	\$9,230	240
HCR12	12" width Cabinet Base with Drawer	\$3,520	60
HCR18	18" width Cabinet Base with Drawer	\$3,950	90
HCR24	24" width Cabinet Base with Drawer	\$4,930	120
HCR30	30" width Cabinet Base with Drawer	\$5,780	150
HCR36	36" width Cabinet Base with Drawer	\$6,770	180
HCR48	48" width Cabinet Base with Drawer	\$9,580	250
Options and Accessories			
AHCLR12	12" width Cabinet Ladder Racks Kit	\$880	
AHCLR18	18" width Cabinet Ladder Racks Kit	\$880	
AHCLR24	24" width Cabinet Ladder Racks Kit	\$880	
AHCLR30	30" width Cabinet Ladder Racks Kit	\$880	
AHCLR36	36" width Cabinet Ladder Racks Kit	\$1,340	
AHCLR48	48" width Cabinet Ladder Racks Kit	\$1,520	

CABINET BASES

Model Number	Description	List Price	Weight (lb)
Options and Accessories			
AHIS12	12" width Cabinet Intermediate Permanent Shelf	\$640	5
AHIS18	18" width Cabinet Intermediate Permanent Shelf	\$780	8
AHIS24	24" width Cabinet Intermediate Permanent Shelf	\$920	10
AHIS30	30" width Cabinet Intermediate Permanent Shelf	\$1,060	13
AHIS36	36" width Cabinet Intermediate Permanent Shelf	\$1,200	15
AHIS48	48" width Cabinet Intermediate Permanent Shelf	\$1,340	20



COUNTER HEIGHT UNITS



- Heavy duty 2.5" diameter stainless steel tubular modular legs, with or without bottom shelf.
- Each product on 28" tall modular legs.
- Heavy gauge welded body construction.
- Available from 12" to 72" wide configurations.
- Modular design to allow maximum flexibility and endless possible configurations.

Model Number	Description	List Price	Weight (lb)
HEL12	12" width Extended Legs	\$1,510	30
HEL18	18" width Extended Legs	\$1,920	50
HEL24	24" width Extended Legs	\$2,260	80
HEL30	30" width Extended Legs	\$2,740	100
HEL36	36" width Extended Legs	\$3,500	130
HEL48	48" width Extended Legs	\$4,240	170
HEL60	60" width Extended Legs	\$5,020	200
HEL72	72" width Extended Legs	\$5,820	230

REFRIGERATED & FREEZER BASES



- Heavy duty refrigerated bases with drawer configurations to accommodate 6" x 12" x 20" hotel pans.
- Modular design to be attached to Hestan Commercial rangetops.
- LED temperature display.
- Heavy duty drawer slides system with full extension. Each can withstand 275 lb
- Heavy duty top insulation for maximum heat protection.
- Removable drawer slides for cleaning or simple replacement.

Model Number	Description	List Price	Rate (Btu/hr)	Weight (lb)
HRBR36	36" width Remote Refrigerated Base	\$17,740	1,200	350
HRBR48	48" width Remote Refrigerated Base	\$20,560	1,600	450
HRBR54	54" width Remote Refrigerated Base	\$21,960	1,800	500
HRBR60	60" width Remote Refrigerated Base	\$23,230	1,800	550
HRBR72	72" width Remote Refrigerated Base	\$25,200	2,200	650
HRBR84	84" width Remote Refrigerated Base	\$29,430	3,000	750
HRBR96	96" width Remote Refrigerated Base	\$31,670	3,600	850
HRBR108	108" width Remote Refrigerated Base	\$36,030	4,000	950
HRBS36	36" width Self Contained Refrigerated Base	\$20,420	1,200	440
HRBS48	48" width Self Contained Refrigerated Base	\$23,930	1,600	540
HRBS54	54" width Self Contained Refrigerated Base	\$26,040	1,800	590
HRBS60	60" width Self Contained Refrigerated Base	\$27,870	1,800	640
HRBS72	72" width Self Contained Refrigerated Base	\$28,720	2,200	740
HRBS84	84" width Self Contained Refrigerated Base	\$31,670	3,000	840
HRBS96	96" width Self Contained Refrigerated Base	\$37,450	3,600	940
HRBS108	108" width Self Contained Refrigerated Base	\$41,240	4,000	1040
HFBR36	36" width Remote Freezer Base	\$18,730	1,200	350
HFBR48	48" width Remote Freezer Base	\$20,980	1,600	450
HFBR54	54" width Remote Freezer Base	\$23,230	1,800	500
HFBR60	60" width Remote Freezer Base	\$24,360	1,800	550
HFBR72	72" width Remote Freezer Base	\$26,040	2,200	650
HFBR84	84" width Remote Freezer Base	\$30,830	3,000	750
HFBR96	96" width Remote Freezer Base	\$32,380	3,600	850
HFBR108	108" width Remote Freezer Base	\$36,600	4,000	950
HFBS36	36" width Self Contained Freezer Base	\$22,100	1,200	440
HFBS48	48" width Self Contained Freezer Base	\$24,220	1,600	540
HFBS54	54" width Self Contained Freezer Base	\$26,040	1,800	590
HFBS60	60" width Self Contained Freezer Base	\$28,020	1,800	640
HFBS72	72" width Self Contained Freezer Base	\$30,970	2,200	740
HFBS84	84" width Self Contained Freezer Base	\$33,930	3,000	840
HFBS96	96" width Self Contained Freezer Base	\$38,290	3,600	940
HFBS108	108" width Self Contained Freezer Base	\$41,530	4,000	1040

SAUTE STATIONS



- Sealed Single Flow saute burners at 25,000 Btu/hour each - HSS, HSSP
- High performance Induction saute burners at 2,600 watts each - HSI models
- Stainless steel fully sealed burner bowl for easy cleaning - HSS, HSSP
- Stainless steel cold rail wrapped with refrigerated coil with thermostatic control
- Heavy duty refrigerated drawer configurations to accommodate 6" x 12" x 20" hotel pans.
- Heavy duty drawer slides system with full extension. Each can

Model Number	Description	List Price	Rate (Btu/hr)	Weight (lb)
HSS242	24" width 2-Saute Burner Rangetop	\$8,620	50,000	90
HSS363	36" width 3-Saute Burner Rangetop	\$11,490	75,000	110
HSS484	48" width 4-Saute Burner Rangetop	\$14,220	100,000	150
HSS605	60" width 5-Saute Burner Rangetop	\$17,080	125,000	180
HSS726	72" width 6-Saute Burner Rangetop	\$20,640	150,000	220
HSSP242	24" width 2-Saute Burner Rangetop with Standing Pilot	\$7,240	50,000	90
HSSP363	36" width 3-Saute Burner Rangetop with Standing Pilot	\$9,300	75,000	110
HSSP484	48" width 4-Saute Burner Rangetop with Standing Pilot	\$11,490	100,000	150
HSSP605	60" width 5-Saute Burner Rangetop with Standing Pilot	\$13,670	125,000	180
HSSP726	72" width 6-Saute Burner Rangetop with Standing Pilot	\$18,580	150,000	220
HSI362	36" width 2-Induction Burner Rangetop	\$11,860	5,200 W	110
HSI482	48" width 2-Induction Burner Rangetop	\$14,690	5,200 W	150
HSI603	60" width 3-Induction Burner Rangetop	\$17,520	7,800 W	180
HSI724	72" width 4-Induction Burner Rangetop	\$23,080	10,400 W	220
HRBSC36	36" width Self Contained Refrigerated Base with Cold Rail	\$34,940	1,900	480
HRBSC48	48" width Self Contained Refrigerated Base with Cold Rail	\$36,520	2,700	640
HRBSC60	60" width Self Contained Refrigerated Base with Cold Rail	\$45,230	3,700	800
HRBSC72	72" width Self Contained Refrigerated Base with Cold Rail	\$47,120	4,500	835
HRBRC36	36" width Remote Refrigerated Base with Cold Rail	\$25,920	2,300	380
HRBRC48	48" width Remote Refrigerated Base with Cold Rail	\$34,140	3,500	500
HRBRC60	60" width Remote Refrigerated Base with Cold Rail	\$38,130	3,700	630
HRBRC72	72" width Remote Refrigerated Base with Cold Rail	\$42,030	4,100	725

WINE COLUMNS



- Dual Zone - 36 bottles per zone, for total of 72 bottles.
- Heavy duty and elegant stainless steel interior liner.
- Multi-LED light array provides brilliant illumination.
- Robust and unique hinge system for smooth door opening and self-closing. Hinge opens within itself, so side cabinetry is not compromised.
- EvenFlow Air Circulating Technology(TM) consists of independent ventilation for each compartment, providing even distribution of cold air flow and allows for uniform and precise temperature control ensuring better food preservation.
- Triple-paned, bronzed glass door guarantees maximum protection from harmful UV light rays and helps maintain consistent interior preservation temperature.

Model Number	Description	List Price	Weight (lb)
KWCR24	24" width Wine Column, Right Hinged	\$22,100	400
KWCL24	24" width Wine Column, Left Hinged	\$22,100	400
KWCR24-OV	24" width Wine Column, Overlay, Right Hinged	\$20,880	400
KWCL24-OV	24" width Wine Column, Overlay, Left Hinged	\$20,880	400

Options and Accessories

AKRCJK	Central Joining Kit	400.00
AKRCJK-OV	Central Joining Kit, Overlay	400.00
AKRLJK	Lateral Joining Kit	650.00
AKHKC-OV	Handle Kit, Wine Column	340.00
AKWDRK	Wine Display Rack Kit	280.00

FRYERS & DUMP STATIONS



- Heavy duty welded stainless steel tank
- High performance cast iron tubular burner system at 38,000 Btu/hour each designed for maximum efficiency.
- Total power from 45,000 Btu/hour (12" model) up to 228,000 Btu/hour (36" model).
- Heavy duty fryer basket with insulated handles.
- Removable basket hanger for ease of cleaning
- Fast recovery time for high volume cooking.

Model Number	Description	List Price	Rate (Btu/hr)	Weight (lb)
HFRL12	12" width LH Single Tank Fryer	\$10,660	45,000	250
HFRR12	12" width RH Single Tank Fryer	\$10,660	45,000	250
HFRL18	18" width LH Single Tank Fryer	\$11,850	114,000	300
HFRR18	18" width RH Single Tank Fryer	\$11,850	114,000	300
HFRL182	18" width LH Double Tank Fryer	\$15,520	90,000	300
HFRR182	18" width RH Double Tank Fryer	\$15,520	90,000	300
HFRL241	24" width LH Single Tank Fryer	\$14,840	152,000	330
HFRR241	24" width RH Single Tank Fryer	\$14,840	152,000	330
HFRL242	24" width LH Double Tank Fryer	\$18,380	90,000	330
HFRR242	24" width RH Double Tank Fryer	\$18,380	90,000	330
HFRL362	36" width Double Tanks Fryer	\$23,830	228,000	500
HDS12	12" width Dump Station	\$2,190	na	100
HDS18	18" width Dump Station	\$2,330	na	125
HDS24	24" width Dump Station	\$2,650	na	210
HDS30	30" width Dump Station	\$2,960	na	240
HDS36	36" width Dump Station	\$3,380	na	250
HDH12	12" width Dump Station with Heat Lamp	\$3,800	na	120
HDH18	18" width Dump Station with Heat Lamp	\$3,950	na	145
HDH24	24" width Dump Station with Heat Lamp	\$4,270	na	230
HDH30	30" width Dump Station with Heat Lamp	\$4,590	na	260
HDH36	36" width Dump Station with Heat Lamps	\$6,630	na	290
Options and Accessories				
AHFRSL	Fryer Side Splash, Left	\$760	na	
AHFRSR	Fryer Side Splash, Right	\$760	na	
AHRGCFP	Fryer / Pasta Cooker Rear Gas Connection Kit	No Charge		

PASTA COOKERS

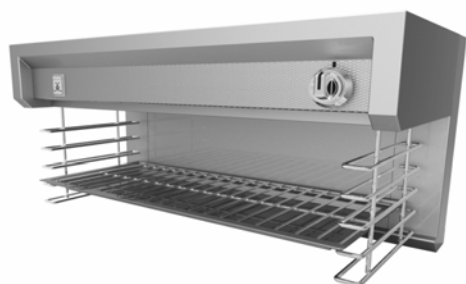


- High-performance 45,000 Btu/hour gas-fired burner system. Deluxe models (HPCH) with 80,000 Btu/hour burner system.
- Heavy duty, stainless steel, fully welded single chamber construction with 12 gallon capacity.
- Triple fiberglass insulation on all sides of chamber.
- Standing pilot with safety thermocouple.
- High-limit safety shut-off capability (Deluxe models -

Model Number	Description	List Price	Rate (Btu/hr)	Weight (lb)
HPCL18	18" width LH Pasta Cooker	\$18,460	45,000	250
HPCR18	18" width RH Pasta Cooker	\$18,460	45,000	250
HPCHL18	18" width LH Deluxe Pasta Cooker	\$19,100	80,000	250
HPCHR18	18" width RH Deluxe Pasta Cooker	\$19,100	80,000	250
AHRGCFP	Fryer / Pasta Cooker Rear Gas Connection Kit	No Charge		



CHEESEMELTERS



- Unique wide-open chassis design for maximum visibility from all directions
- Heavy duty gas-powered infrared burner, up to 30,000 Btu/hour, with intense and efficient infrared heat
- Heavy duty Inconel burner screens with optimum combustion efficiency, durability, and flame stability
- Tilted burner design for heat deflection and rear flue system to direct heat away from the user and controls

Model Number	Description	List Price	Rate (Btu/hr)	Weight (lb)
HCMR24	24" width Range Mount Cheesemelter	\$6,880	20,000	160
HCMW24	24" width Wall Mount Cheesemelter	\$6,690	20,000	100
HCMC24	24" width Counter Cheesemelter	\$7,290	20,000	115
HCMS24	24" width Single Depth See Through Cheesemelter	\$6,830	20,000	100
HCMR30	30" width Range Mount Cheesemelter	\$7,670	20,000	200
HCMW30	30" width Wall Mount Cheesemelter	\$7,520	20,000	130
HCMC30	30" width Counter Cheesemelter	\$8,130	20,000	145
HCMS30	30" width Single Depth See Through Cheesemelter	\$7,600	20,000	130
HCMR36	36" width Range Mount Cheesemelter	\$8,400	30,000	240
HCMW36	36" width Wall Mount Cheesemelter	\$8,270	30,000	160
HCMC36	36" width Counter Cheesemelter	\$8,870	30,000	170
HCMS36	36" width Single Depth See Through Cheesemelter	\$8,310	30,000	160
HCMD36	36" width Double Depth See Through Cheesemelter	\$16,690	60,000	320
HCMR48	48" width Range Mount Cheesemelter	\$9,870	40,000	320
HCMW48	48" width Wall Mount Cheesemelter	\$9,850	40,000	200
HCMC48	48" width Counter Cheesemelter	\$10,530	40,000	230
HCMS48	48" width Single Depth See Through Cheesemelter	\$9,860	40,000	200
HCMD48	48" width Double Depth See Through Cheesemelter	\$19,710	80,000	400
HCMR54	54" width Range Mount Cheesemelter	\$10,800	40,000	360
HCMW54	54" width Wall Mount Cheesemelter	\$10,830	40,000	220
HCMC54	54" width Counter Cheesemelter	\$11,420	40,000	250
HCMS54	54" width Single Depth See Through Cheesemelter	\$10,710	40,000	220
HCMD54	54" width Double Depth See Through Cheesemelter	\$21,400	80,000	440
HCMR60	60" width Range Mount Cheesemelter	\$11,720	50,000	400
HCMW60	60" width Wall Mount Cheesemelter	\$11,890	50,000	250
HCMC60	60" width Counter Cheesemelter	\$12,480	50,000	280
HCMS60	60" width Single Depth See Through Cheesemelter	\$11,700	50,000	250
HCMD60	60" width Double Depth See Through Cheesemelter	\$23,370	100,000	500
HCMR72	72" width Range Mount Cheesemelter	\$13,210	60,000	480
HCMW72	72" width Wall Mount Cheesemelter	\$13,530	60,000	320
HCMC72	72" width Counter Cheesemelter	\$14,130	60,000	340
HCMS72	72" width Single Depth See Through Cheesemelter	\$13,230	60,000	320
HCMD72	72" width Double Depth See Through Cheesemelter	\$26,320	120,000	640

CHEESEMELTERS

Model Number	Description	List Price	Rate (Btu/hr)	Weight (lb)
Options and Accessories				
AHCR24	24" width Cheesemelter Rack	\$200		
AHCR30	30" width Cheesemelter Rack	\$220		
AHCR36	36" width Cheesemelter Rack	\$240		
AHCR48	48" width Cheesemelter Rack	\$380		
AHCR60	60" width Cheesemelter Rack	\$460		
AHCR72	72" width Cheesemelter Rack	\$610		
AHIP	Inter-Plumb Kit	No Charge		
AHSP	Side Shields - set of 2	\$690		

SALAMANDERS



- Unique wide-open chassis design for maximum visibility from all directions.
- Heavy duty gas-powered infrared burner, up to 30,000 Btu/hour.
- Heavy duty Inconel burner screens with optimum combustion efficiency, durability, and flame stability.
- Elevation rack mechanism for smooth 5" vertical operation, infinite height adjustment, and maximum heat control.
- Full extension concealed horizontal glide system
- Range Mount models - riser to be ordered separately

Model Number	Description	List Price	Rate (Btu/hr)	Weight (lb)
HSMR24	24" width Range Mount Salamander	\$9,080	20,000	200
HSMW24	24" width Wall Mount Salamander	\$9,030	20,000	170
HSMC24	24" width Counter Salamander	\$9,280	20,000	190
HSMR36	36" width Range Mount Salamander	\$9,500	30,000	300
HSMW36	36" width Wall Mount Salamander	\$9,470	30,000	250
HSMC36	36" width Counter Salamander	\$9,710	30,000	275
Options and Accessories				
AHIP	Inter-Plumb Kit	No Charge		
AHSP	Side Shields - set of 2	\$690		

RISERS & SHELVES



- Heavy duty welded body construction.
- Stainless steel front and sides.
- Lift-off flue cap for ease of cleaning and service.
- Available in 4 different heights: Island Trim (IT), Low Riser (LR), Mid Riser (MR), and Tall Riser (TR).
- 22" vertical clearance from closest shelf to cooking surface.
- Mid Risers and Tall Riser are available with shelves: solid or tubular.
- Wall mount models (W) available.

Model Number	Description	List Price	Weight (lb)
TALL RISER			
HTR12	12" width Tall Riser	\$1,060	45
HTR18	18" width Tall Riser	\$1,250	55
HTR24	24" width Tall Riser	\$1,480	65
HTR30	30" width Tall Riser	\$1,700	75
HTR36	36" width Tall Riser	\$1,900	85
HTR48	48" width Tall Riser	\$2,260	120
HTR54	54" width Tall Riser	\$2,470	135
HTR60	60" width Tall Riser	\$2,670	145
HTR72	72" width Tall Riser	\$2,890	165
HTR84	84" width Tall Riser	\$3,320	190
HTR90	90" width Tall Riser	\$3,460	205
HTR96	96" width Tall Riser	\$3,600	220
HTR102	102" width Tall Riser	\$3,740	225
HTR108	108" width Tall Riser	\$3,880	235
HTRF12	12" width Tall Riser for Fryer	\$1,700	50
HTRF18	18" width Tall Riser for Fryer	\$2,120	60
HTRF24	24" width Tall Riser for Fryer	\$2,430	70
HTRF36	36" width Tall Riser for Fryer	\$3,050	80
HTRP18	18" width Tall Riser for Pasta Cooker	\$2,060	60
HTRP36	36" width Tall Riser for Pasta Cooker	\$3,030	80
MID RISER			
HMR12	12" width Mid Riser	\$810	30
HMR18	18" width Mid Riser	\$970	40
HMR24	24" width Mid Riser	\$1,130	50
HMR30	30" width Mid Riser	\$1,300	60
HMR36	36" width Mid Riser	\$1,440	70
HMR48	48" width Mid Riser	\$1,730	95
HMR54	54" width Mid Riser	\$1,900	105
HMR60	60" width Mid Riser	\$2,020	125
HMR72	72" width Mid Riser	\$2,260	140
HMR84	84" width Mid Riser	\$2,520	150

RISERS & SHELVES

Model Number	Description	List Price	Weight (lb)
HMR90	90" width Mid Riser	\$2,670	160
HMR96	96" width Mid Riser	\$2,790	170
HMR102	102" width Mid Riser	\$2,890	180
HMR108	108" width Mid Riser	\$2,990	190
HMRF12	12" width Mid Riser for Fryer	\$1,060	35
HMRF18	18" width Mid Riser for Fryer	\$1,250	45
HMRF24	24" width Mid Riser for Fryer	\$1,420	55
HMRF36	36" width Mid Riser for Fryer	\$1,560	65
HMRP18	18" width Mid Riser for Pasta Cooker	\$1,250	45
HMRP36	36" width Mid Riser for Pasta Cooker	\$1,570	65

LOW RISER

HLR12	12" width Low Riser	Standard	20
HLR18	18" width Low Riser	Standard	30
HLR24	24" width Low Riser	Standard	40
HLR30	30" width Low Riser	Standard	50
HLR36	36" width Low Riser	Standard	60
HLR48	48" width Low Riser	Standard	80
HLR54	54" width Low Riser	Standard	90
HLR60	60" width Low Riser	Standard	100
HLR72	72" width Low Riser	Standard	120
HLR84	84" width Low Riser	Standard	135
HLR90	90" width Low Riser	Standard	150
HLR96	96" width Low Riser	Standard	160
HLR102	102" width Low Riser	Standard	170
HLR108	108" width Low Riser	Standard	180
HLRF12	12" width Low Riser	Standard	25
HLRF18	18" width Low Riser for Fryer	Standard	35
HLRF24	24" width Low Riser for Fryer	Standard	45
HLRF36	36" width Low Riser for Fryer	Standard	55
HLRP18	18" width Low Riser for Pasta Cooker	Standard	35
HLRP36	36" width Low Riser for Pasta Cooker	Standard	55

ISLAND TRIM

HIT12	12" width Island Trim	No Charge	9
HIT18	18" width Island Trim	No Charge	15
HIT24	24" width Island Trim	No Charge	25
HIT30	30" width Island Trim	No Charge	30
HIT36	36" width Island Trim	No Charge	35
HIT48	48" width Island Trim	No Charge	45
HIT54	54" width Island Trim	No Charge	55
HIT60	60" width Island Trim	No Charge	65
HIT72	72" width Island Trim	No Charge	75

RISERS & SHELVES

Model Number	Description	List Price	Weight (lb)
HIT84	84" width Island Trim	No Charge	85
HIT90	90" width Island Trim	No Charge	95
HIT96	96" width Island Trim	No Charge	105
HIT102	102" width Island Trim	No Charge	115
HIT108	108" width Island Trim	No Charge	125

SINGLE TOP SHELF - RANGE MOUNT

HSTT12	12" width Single Top Tubular Shelf	\$440	3
HSTT18	18" width Single Top Tubular Shelf	\$580	5
HSTT24	24" width Single Top Tubular Shelf	\$720	5
HSTT30	30" width Single Top Tubular Shelf	\$870	10
HSTT36	36" width Single Top Tubular Shelf	\$1,010	10
HSTT48	48" width Single Top Tubular Shelf	\$1,160	10
HSTS12	12" width Single Top Solid Shelf	\$280	3
HSTS18	18" width Single Top Solid Shelf	\$350	5
HSTS24	24" width Single Top Solid Shelf	\$420	5
HSTS30	30" width Single Top Solid Shelf	\$480	10
HSTS36	36" width Single Top Solid Shelf	\$560	10
HSTS48	48" width Single Top Solid Shelf	\$620	10

SINGLE BOTTOM SHELF - RANGE MOUNT

HSBT12	12" width Single Bottom Tubular Shelf	\$510	5
HSBT18	18" width Single Bottom Tubular Shelf	\$650	7
HSBT24	24" width Single Bottom Tubular Shelf	\$800	7
HSBT30	30" width Single Bottom Tubular Shelf	\$940	12
HSBT36	36" width Single Bottom Tubular Shelf	\$1,080	12
HSBT48	48" width Single Bottom Tubular Shelf	\$1,230	12
HSBS12	12" width Single Bottom Solid Shelf	\$330	5
HSBS18	18" width Single Bottom Solid Shelf	\$390	7
HSBS24	24" width Single Bottom Solid Shelf	\$460	7
HSBS30	30" width Single Bottom Solid Shelf	\$530	12
HSBS36	36" width Single Bottom Solid Shelf	\$600	12
HSBS48	48" width Single Bottom Solid Shelf	\$660	12

DOUBLE SHELVES - RANGE MOUNT

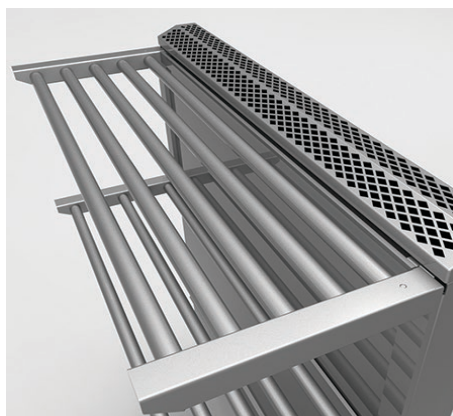
HDTS12	12" width Double Tubular Shelves	\$940	6
HDTS18	18" width Double Tubular Shelves	\$1,080	10
HDTS24	24" width Double Tubular Shelves	\$1,230	10
HDTS30	30" width Double Tubular Shelves	\$1,370	20
HDTS36	36" width Double Tubular Shelves	\$1,520	20
HDTS48	48" width Double Tubular Shelves	\$1,660	20
HDSS12	12" width Double Solid Shelves	\$600	6
HDSS18	18" width Double Solid Shelves	\$720	10
HDSS24	24" width Double Solid Shelves	\$870	10
HDSS30	30" width Double Solid Shelves	\$1,010	20
HDSS36	36" width Double Solid Shelves	\$1,130	20
HDSS48	48" width Double Solid Shelves	\$1,280	20

RISERS & SHELVES

Model Number	Description	List Price	Weight (lb)
HDMS12	12" width Double Mixed Shelves	\$780	6
HDMS18	18" width Double Mixed Shelves	\$990	10
HDMS24	24" width Double Mixed Shelves	\$1,200	10
HDMS30	30" width Double Mixed Shelves	\$1,420	20
HDMS36	36" width Double Mixed Shelves	\$1,620	20
HDMS48	48" width Double Mixed Shelves	\$1,840	20

SINGLE SHELF - WALL MOUNT

HSTTW12	12" width Single Wall Mount Tubular Shelves	\$440	3
HSTTW18	18" width Single Wall Mount Tubular Shelves	\$580	5
HSTTW24	24" width Single Wall Mount Tubular Shelves	\$720	5
HSTTW30	30" width Single Wall Mount Tubular Shelves	\$870	10
HSTTW36	36" width Single Wall Mount Tubular Shelves	\$1,010	10
HSTTW48	48" width Single Wall Mount Tubular Shelves	\$1,160	10
HSTSW12	12" width Single Wall Mount Solid Shelf	\$280	3
HSTSW18	18" width Single Wall Mount Solid Shelf	\$350	5
HSTSW24	24" width Single Wall Mount Solid Shelf	\$420	5
HSTSW30	30" width Single Wall Mount Solid Shelf	\$480	10
HSTSW36	36" width Single Wall Mount Solid Shelf	\$560	10
HSTSW48	48" width Single Wall Mount Solid Shelf	\$620	10



OPTIONS & ACCESSORIES

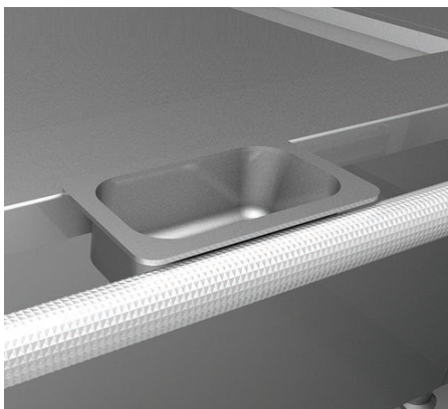
PLATE SHELF

Model Number	Description	List Price
AHPS12	12" width Standard Plate Shelf	Standard
AHPS18	18" width Standard Plate Shelf	Standard
AHPS24	24" width Standard Plate Shelf	Standard
AHPS30	30" width Standard Plate Shelf	Standard
AHPS36	36" width Standard Plate Shelf	Standard
AHPS48	48" width Standard Plate Shelf	Standard
AHPS54	54" width Standard Plate Shelf	Standard
AHPS60	60" width Standard Plate Shelf	Standard
AHPS72	72" width Standard Plate Shelf	Standard
AHPS84	84" width Standard Plate Shelf	Standard
AHPS90	90" width Standard Plate Shelf	Standard
AHPS96	96" width Standard Plate Shelf	Standard
AHPS102	102" width Standard Plate Shelf	Standard
AHPS108	108" width Standard Plate Shelf	Standard
AHPS126	12" width Extended 6" Plate Shelf	\$280
AHPS186	18" width Extended 6" Plate Shelf	\$420
AHPS246	24" width Extended 6" Plate Shelf	\$560
AHPS306	30" width Extended 6" Plate Shelf	\$690
AHPS366	36" width Extended 6" Plate Shelf	\$830
AHPS486	48" width Extended 6" Plate Shelf	\$1,070
AHPS546	54" width Extended 6" Plate Shelf	\$1,210
AHPS606	60" width Extended 6" Plate Shelf	\$1,380
AHPS726	72" width Extended 6" Plate Shelf	\$1,600
AHPS846	84" width Extended 6" Plate Shelf	\$1,850
AHPS906	90" width Extended 6" Plate Shelf	\$2,060
AHPS966	96" width Extended 6" Plate Shelf	\$2,120
AHPS1026	102" width Extended 6" Plate Shelf	\$2,260
AHPS1086	108" width Extended 6" Plate Shelf	\$2,390
AHPS128	12" width Extended 8" Plate Shelf	\$300
AHPS188	18" width Extended 8" Plate Shelf	\$470
AHPS248	24" width Extended 8" Plate Shelf	\$930
AHPS308	30" width Extended 8" Plate Shelf	\$1,170
AHPS368	36" width Extended 8" Plate Shelf	\$1,400
AHPS488	48" width Extended 8" Plate Shelf	\$1,850
AHPS548	54" width Extended 8" Plate Shelf	\$2,120
AHPS608	60" width Extended 8" Plate Shelf	\$2,330
AHPS728	72" width Extended 8" Plate Shelf	\$2,800
AHPS848	84" width Extended 8" Plate Shelf	\$3,290
AHPS908	90" width Extended 8" Plate Shelf	\$3,560
AHPS968	96" width Extended 8" Plate Shelf	\$3,730
AHPS1028	102" width Extended 8" Plate Shelf	\$3,970
AHPS1088	108" width Extended 8" Plate Shelf	\$4,240

OPTIONS & ACCESSORIES

BELLY BAR

Model Number	Description	List Price
AHBB12	12" width Standard Plate Shelf + Belly Bar	\$720
AHBB18	18" width Standard Plate Shelf + Belly Bar	\$1,080
AHBB24	24" width Standard Plate Shelf + Belly Bar	\$1,440
AHBB30	30" width Standard Plate Shelf + Belly Bar	\$1,820
AHBB36	36" width Standard Plate Shelf + Belly Bar	\$2,160
AHBB48	48" width Standard Plate Shelf + Belly Bar	\$2,880
AHBB54	54" width Standard Plate Shelf + Belly Bar	\$3,270
AHBB60	60" width Standard Plate Shelf + Belly Bar	\$3,600
AHBB72	72" width Standard Plate Shelf + Belly Bar	\$4,320
AHBB84	84" width Standard Plate Shelf + Belly Bar	\$5,040
AHBB90	90" width Standard Plate Shelf + Belly Bar	\$5,410
AHBB96	96" width Standard Plate Shelf + Belly Bar	\$5,740
AHBB102	102" width Standard Plate Shelf + Belly Bar	\$6,100
AHBB108	108" width Standard Plate Shelf + Belly Bar	\$6,470
AHBBC12	12" width Plate Shelf + Belly Bar for Condiment Trays	\$920
AHBBC18	18" width Plate Shelf + Belly Bar for Condiment Trays	\$1,380
AHBBC24	24" width Plate Shelf + Belly Bar for Condiment Trays	\$1,840
AHBBC30	30" width Plate Shelf + Belly Bar for Condiment Trays	\$2,300
AHBBC36	36" width Plate Shelf + Belly Bar for Condiment Trays	\$2,750
AHBBC48	48" width Plate Shelf + Belly Bar for Condiment Trays	\$3,660
AHBBC54	54" width Plate Shelf + Belly Bar for Condiment Trays	\$4,140
AHBBC60	60" width Plate Shelf + Belly Bar for Condiment Trays	\$4,590
AHBBC72	72" width Plate Shelf + Belly Bar for Condiment Trays	\$5,500
AHBBC84	84" width Plate Shelf + Belly Bar for Condiment Trays	\$6,430
AHBBC90	90" width Plate Shelf + Belly Bar for Condiment Trays	\$6,880
AHBBC96	96" width Plate Shelf + Belly Bar for Condiment Trays	\$7,330
AHBBC102	102" width Plate Shelf + Belly Bar for Condiment Trays	\$7,800
AHBBC108	108" width Plate Shelf + Belly Bar for Condiment Trays	\$8,240



OPTIONS & ACCESSORIES

STANDARD COLORS FOR BASES

Model Number	Description	List Price
	Stainless Steel	Standard per 36" width
-BK	Stealth - Black	\$1,464 per 36" width
-WH	Froth - White	\$1,464 per 36" width
-RD	Matador - Red	\$1,464 per 36" width
-YW	Sol - Yellow	\$1,464 per 36" width
-OR	Citra - Orange	\$1,464 per 36" width
-BG	Tin Roof - Burgundy	\$1,464 per 36" width
-PP	Lush - Purple	\$1,464 per 36" width
-BU	Prince - Blue	\$1,464 per 36" width
-GR	Grove - Green	\$1,464 per 36" width
-GG	Pacific Fog - Graphite Gray	\$1,464 per 36" width
-TQ	Bora Bora - Turquoise	\$1,464 per 36" width

HIGH ALTITUDE

Model Number	Description	List Price
-NG	Natural Gas	Standard
-NG-H1	Natural Gas High Altitude 1 (2,000 to 5,999 feet)	No Charge
-NG-H2	Natural Gas High Altitude 2 (6,000 to 10,000 feet)	No Charge
-LP	LP	Standard
-LP-H1	LP High Altitude 1 (2,000 to 5,999 feet)	No Charge
-LP-H2	LP High Altitude 2 (6,000 to 10,000 feet)	No Charge

Model Number	Description	List Price
AHSL4	4 Standard 6" Legs Kit	No Charge
AHSL6	6 Standard 6" Legs Kit	No Charge
AHSL8	8 Standard 6" Legs Kit	No Charge
AHCL4	4 Counter 4" Legs Kit	No Charge
AHCL6	6 Counter 4" Legs Kit	No Charge
AHCL8	8 Counter 4" Legs Kit	No Charge
AHAC4	4 Adjustable 6" Casters Kit	\$850
AHAC6	6 Adjustable 6" Casters Kit	\$1,380
AHAC8	8 Adjustable 6" Casters Kit	\$1,710
AHUL4	4 Upright Double Convection Ovens 6" Legs Kit	No Charge
AHUC4	4 Upright Double Convection Ovens 6" Casters Kit	\$850
AHCCL	Manifold Cap & Cover, Left	Standard
AHCCR	Manifold Cap & Cover, Right	Standard

OPTIONS & ACCESSORIES

Model Number	Description	List Price
AHPR100-NG	Pressure Regulator 1" Natural Gas	Standard
AHPR075-NG	Pressure Regulator 3/4" Natural Gas	No Charge
AHPR125-NG	Pressure Regulator 1-1/4" Natural Gas	No Charge
AHPR100-LP	Pressure Regulator 1" LP	No Charge
AHPR075-LP	Pressure Regulator 3/4" LP	No Charge
AHPR125-LP	Pressure Regulator 1-1/4" LP	No Charge
AHUPR075-NG	Pressure Regulator 3/4" Natural Gas. Upright Convection Oven	Standard
AHUPR075-LP	Pressure Regulator 3/4" LP. Upright Convection Oven	No Charge
AHQD36075	36" long Quick Disconnect Hose - 3/4" diameter	\$930
AHQD36100	36" long Quick Disconnect Hose - 1" diameter	\$1,020
AHQD48075	48" long Quick Disconnect Hose - 3/4" diameter	\$1,020
AHQD48100	48" long Quick Disconnect Hose - 1" diameter	\$1,080
AHQD60075	60" long Quick Disconnect Hose - 3/4" diameter	\$1,080
AHQD60100	60" long Quick Disconnect Hose - 1" diameter	\$1,170
AHRGC	Rear Gas Connection Kit	No Charge
AHRGCFP	Fryer / Pasta Cooker Rear Gas Connection Kit	No Charge
AHUDV	Upright Convection Oven Direct Vent Connection Kit	No Charge

