



Deluxe Grill

GABRxxCX2/GSBRxxCX2/GMBRxxCX2

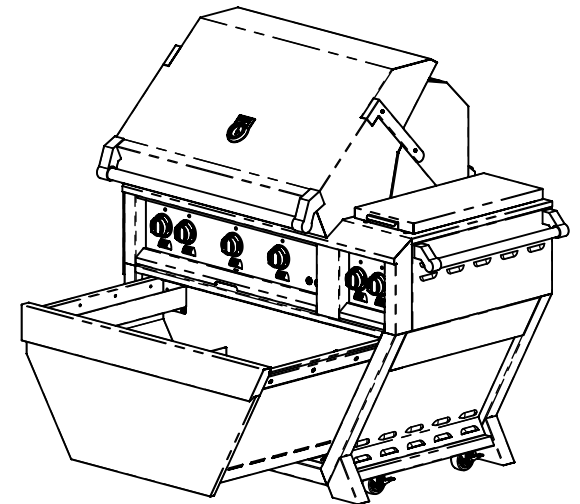
Parts List

THIS PARTS LIST APPLIES TO DELUXE GRILLS WITH THE FOLLOWING SERIAL NUMBER OR LATER:

Model: GxBR36CX2
Serial #: G0419D04078
Mfg. Date: May 2019

Model: GxBR42CX2
Serial #: G0419D04087
Mfg. Date: Apr. 2019

These new models feature the large pull-out drawer.
Please see Rev. C of this parts list for earlier serial numbers.

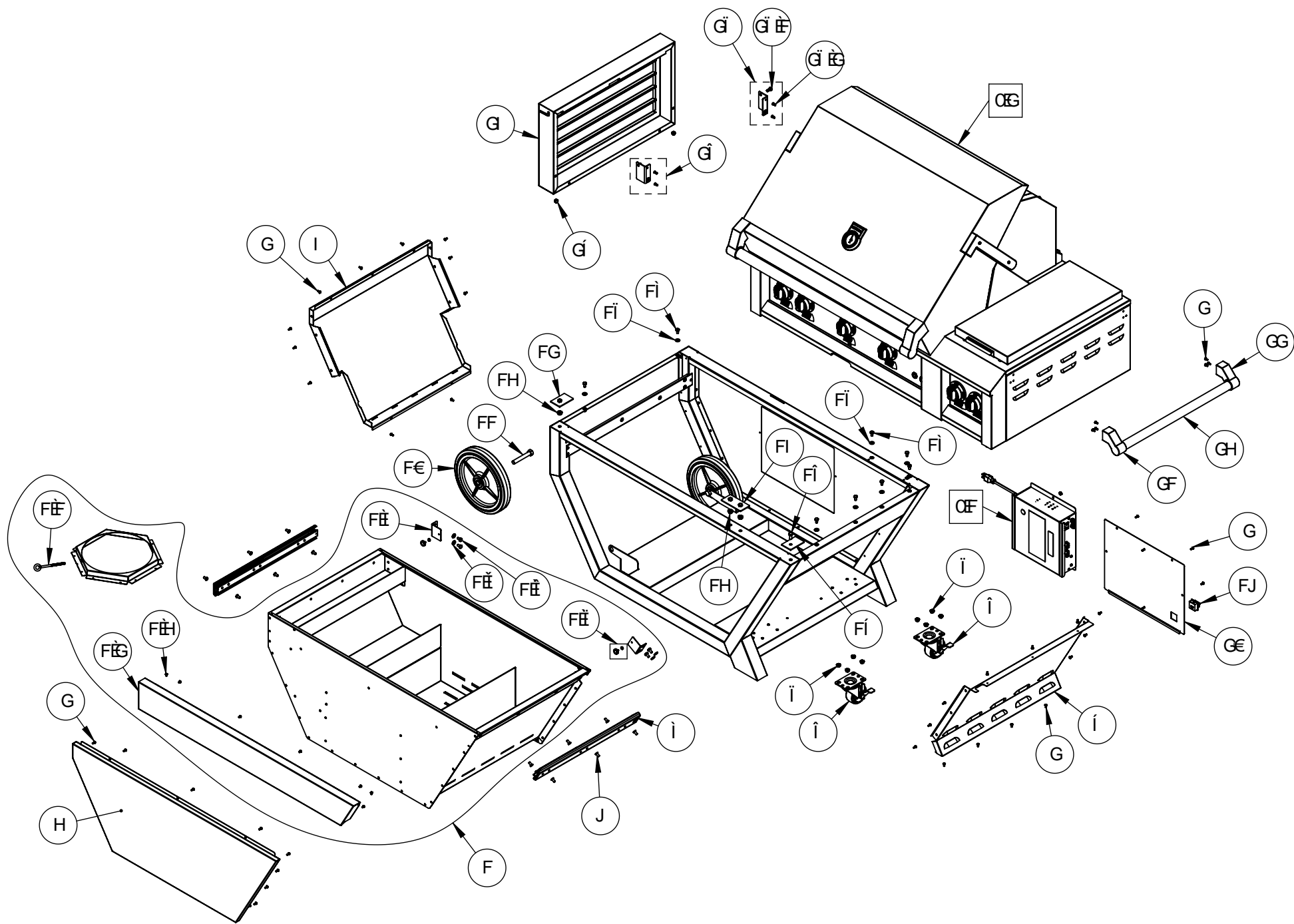


Hestan Commercial Corporation
3375 E. La Palma Ave.
Anaheim, CA 92806
(888)905-7463

RETAIN THIS FOR FUTURE REFERENCE

F9D@579A9BH'D5 FHG!'<9GH5 B'CI H8 CCF'89 @ L9 ; F=@@G

 HESTAN



REPLACEMENT PARTS - HESTAN OUTDOOR DELUXE GRILLS

All warranty and non-warranty repairs should be performed by qualified service personnel. To locate an authorized service agent, contact your Hestan dealer, local representative, or the manufacturer. Before you call, please have the model number and serial number information ready.
 Hestan Commercial Corp. (888) 905-7463

Item No.	Part No.	DESCRIPTION	GABR36CX	GMBR36CX	GSBR36CX	GABR42CX	GMBR42CX	GSBR42CX
			QTY	QTY	QTY	QTY	QTY	QTY
1	021834	SUB-ASSY., DRAWER FRONT, DELUXE CART, 36"	1	1	1	-	-	-
	024585	SUB-ASSY., DRAWER FRONT, DELUXE CART, 42"	-	-	-	1	1	1
1.1	010674	EYEBOLT, 1/4-20 X 3.5" SHANK, ZN	1	1	1	1	1	1
1.2	021868	FACE, DRAWER, DELUXE CART, 36"	1	1	1	-	-	-
	025108	FACE, DRAWER, DELUXE CART, 42"	-	-	-	1	1	1
1.3	011708	SERVICE, MS, 8-32 X .25, PH, PAN, SS, PKG 12	2	2	2	2	2	2
1.4	027763	BRACKET, MAGNET, DELUXE CART	2	2	2	2	2	2
1.5	011714	SERVICE, WSH, FLAT, 1/4 SAE, SS, PKG 4	1	1	1	1	1	1
1.6	011717	SERVICE, HB, 1/4-20 X .500, SS, PKG 4	1	1	1	1	1	1
1.7	015371	SERVICE, MAGNET, 3/4 DIA, KIT	2	2	2	2	2	2
2	011857	SERVICE, MS, 8-32 X .375, PH, PAN, SS, PKG 6	9	9	9	9	9	9
*3	031189-036	PANEL, TEXTURED, FRONT, DELUXE CART 36"	1	1	1	-	-	-
	031189-042	PANEL, TEXTURED, FRONT, DELUXE CART 42"	-	-	-	1	1	1
	021869-036-XX	PANEL, TEXTURED, FRONT, DELUXE CART, 36 (COLOR)	1	1	1	-	-	-
	021869-042-XX	PANEL, TEXTURED, FRONT, DELUXE CART, 42 (COLOR)	-	-	-	1	1	1
*4	031203	PANEL, TEXTURED, LH, DELUXE CART (304SS)	1	1	1	1	1	1
	021857-XX	PANEL, TEXTURED, LH, DELUXE CART (COLOR)	1	1	1	1	1	1
*5	031202	PANEL, TEXTURED, RH, DELUXE CART (304SS)	1	1	1	1	1	1
	021858-XX	PANEL, TEXTURED, RH, DELUXE CART (COLOR)	1	1	1	1	1	1
6	018166	CASTER, SWIVEL, TPR, 3", W/ BRAKE	2	2	2	2	2	2
7	011853	SERVICE, NUT, LCK, SERRATED FLANGE, 1/4-20, SS, PKG 4	2	2	2	2	2	2
8	024295	SLIDE, FULL EXT., 20" HEAVY DUTY, DELUXE GRILL	2	2	2	2	2	2
9	034676	SERVICE, SHCS, 1/4-20 X .50", BTN HD, SPECIAL, SS, PKG 6	2	2	2	2	2	2
10	007129	WHEEL, 10 DIA X 1.5 WIDTH, 1/2" BORE	2	2	2	2	2	2
11	004461	HB, 1/2-13 X 3.25, PARTIALLY THREADED, ZN	2	2	2	2	2	2
12	028026	END PLATE, GRILL JOINER, DELUXE CART, W/A	1	1	1	1	1	1
13	034677	SERVICE, NUT, LCK, SERRATED FLANGE, 5/16-18, SS, PKG 4	1	1	1	1	1	1
14	028025	CENTER PLATE, GRILL JOINER, DELUXE CART, W/A	1	1	1	1	1	1
15	026844	END PLATE, GRILL JOINER, DELUXE CART	1	1	1	1	1	1
16	028023	SERVICE, HB, 1/4-20 X .500, SS, PKG 4	1	1	1	1	1	1
17	011714	SERVICE, WSH, FLAT, 1/4 SAE, SS, PKG 4	2	2	2	2	2	2
18	011717	SERVICE, HB, 1/4-20 X .500, SS, PKG 4	2	2	2	2	2	2
19	008055	STRAIN RELIEF, SNAP-IN, 1.14" SQUARE MOUNT	1	1	1	1	1	1
20	021845	ASSY., ACCESS PANEL, ELECTRICAL BOX MOUNTING, DELUXE CART	1	1	1	1	1	1
21	000463	ENDCAP, HANDLE, LH, SM	1	1	1	1	1	1
22	000704	ENDCAP, HANDLE, RH, SM	1	1	1	1	1	1
23	007147	HANDLE, SIDE, DELUXE CART	1	1	1	1	1	1
24	007530	SIDE SHELF, GRILL, WA	1	1	1	1	1	1
25	010197	SERVICE, BUMPER, RUBBER, .50 DIAM. X .250 H, PKG. 4	1	1	1	1	1	1
26	009157	ASSY., BRACKET A, SIDE SHELF	1	1	1	1	1	1
27	010569	ASSY., BRACKET B, REAR, SIDE SHELF	1	1	1	1	1	1
27.1	014191	SERVICE, HB, 1/4-20 X .625 SS, PKG 4	1	1	1	1	1	1
27.2	017383	SERVICE, MS, 10-24 X 1/2, PH, FLT, UC, SS, PKG 2	1	1	1	1	1	1

COLOR CODE	DESCRIPTION
	STAINLESS STEEL
-BK	STEALTH - BLACK
-WH	FROTH - WHITE
-RD	MATADOR - RED
-YW	SOL - YELLOW
-OR	CITRA - ORANGE
-BG	TIN ROOF - BURGUNDY
-PP	LUSH - PURPLE
-BU	PRINCE - BLUE
-GR	GROVE - GREEN
-GG	PACIFIC FOG - DARK GRAY
-TQ	BORA BORA - TURQUOISE

* FOR COLORED PANEL, SPECIFY COLOR WHEN ORDERING (CHECK YOUR S/N)



DFCDFFSFM
 PUADEIUAZPQAUOMTQVTCFADUOUUOAOOAB
 UUUUOPOABUOUBXESAVYUOTBIAUAUBUTQVCOBA
 QBYAUUTBYQPUIWAPQYUOVQAUOTQUBPABUA
 P**@AQI(AS@AQI)I@I)BVP@UOWTQBUUAUBY
 OUDUAPBSSCOVWUP@ONUUPXUOVQAUOYUOVE

00000v0p

G9FJ=79z89 @ L9 ; F=@@

000Y @6+U

; L6FLL7L!G9FJ=79

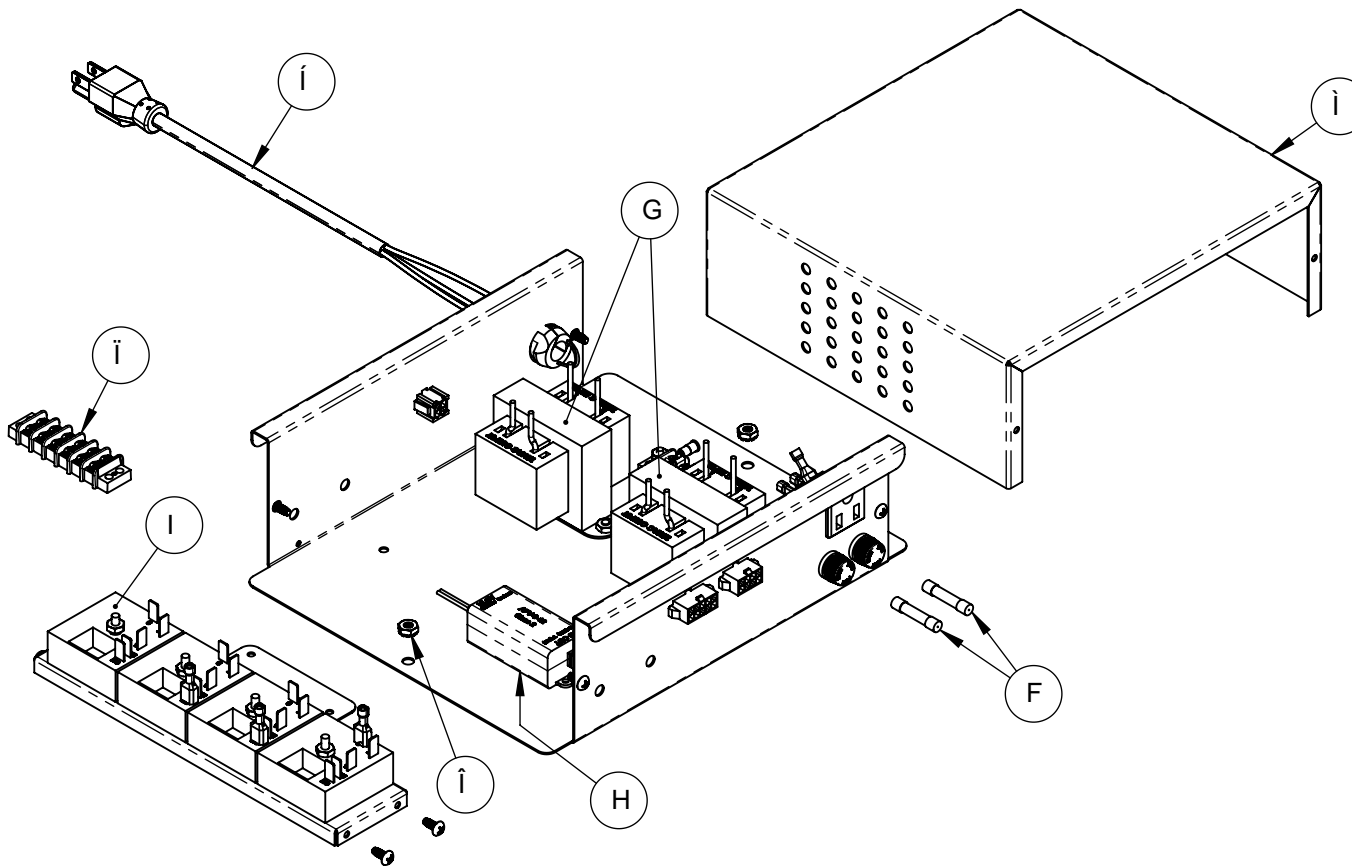
UOX@0P

9

I H G F

A1 - SERVICE, ELECTRICAL BOX ASSEMBLY, OUTDOOR GRILL

Item No.	Part No.	DESCRIPTION	GABR36CX	GMBR36CX	GSBR36CX	GABR42CX	GMBR42CX	GSBR42CX
			QTY	QTY	QTY	QTY	QTY	QTY
1	007732	FUSE, 750mA, 250V, 1/4 X 1-1/4, SLO BLO	2	2	2	2	2	2
2	024050	SERVICE, TRANSFORMER, 120V, CLASS 2, 12 VAC, 4.17 A	2	2	2	2	2	2
3	023837	SERVICE, KIT, LED DRIVER REPLACEMENT	1	1	1	1	1	1
4	007493	TIME DELAY RELAY, 10A, 8 SEC.	3	3	3	4	4	4
5	023755	SERVICE, CORD, POWER, 79", 3 BLADE PLUG, WITH TERMINALS	1	1	1	1	1	1
6	011716	SERVICE, NUT, KEPS, #10-32, SS, PKG 4	2	2	2	2	2	2
7	001457	TERMINAL BLOCK, 4 CIRCUIT, 3/8" SPACING	1	1	1	1	1	1
8	007575	COVER, ELECTRICAL BOX, GRILL	1	1	1	1	1	1



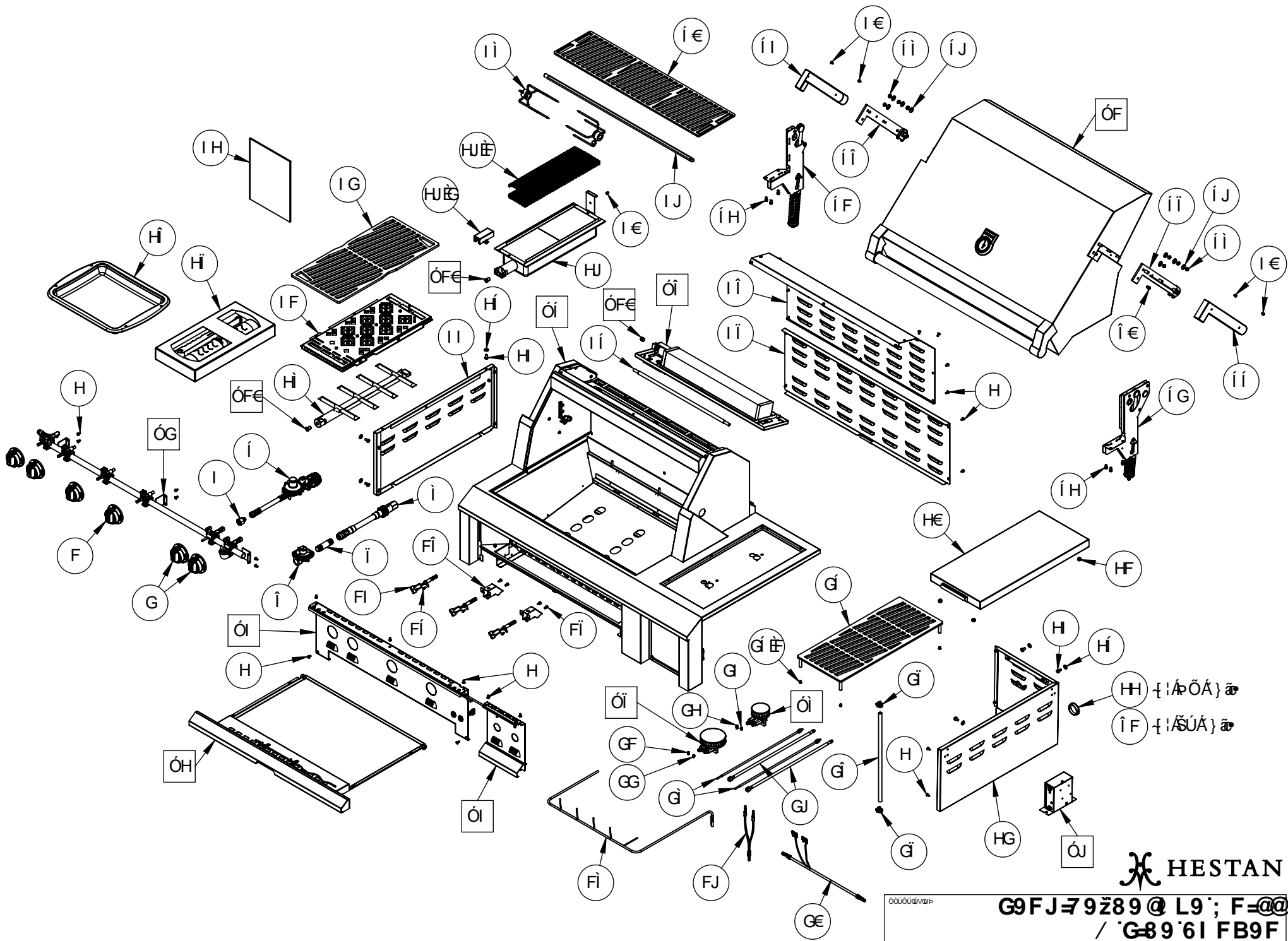
TO ORDER COMPLETE ELECTRICAL BOX

GRILL MODEL NUMBER	PART NUMBER
GABR36	007583-036
GSBR36	
GMBR36	
GABR42	007583-042
GSBR42	
GMBR42	



(& 9 @ 7HF=75 @6CL'G<CK B': CF'F9: 9F9B79

G9FJ=79ž9 @7HF=75 @6CL
 5GG9A6 @MžCI H8CCF'; F=@@
 5%



HESTAN

G9FJ79Z89 @ L9' ; F=@@
 / G-89'6l FB9F

5 &

0000000000
 0000000000

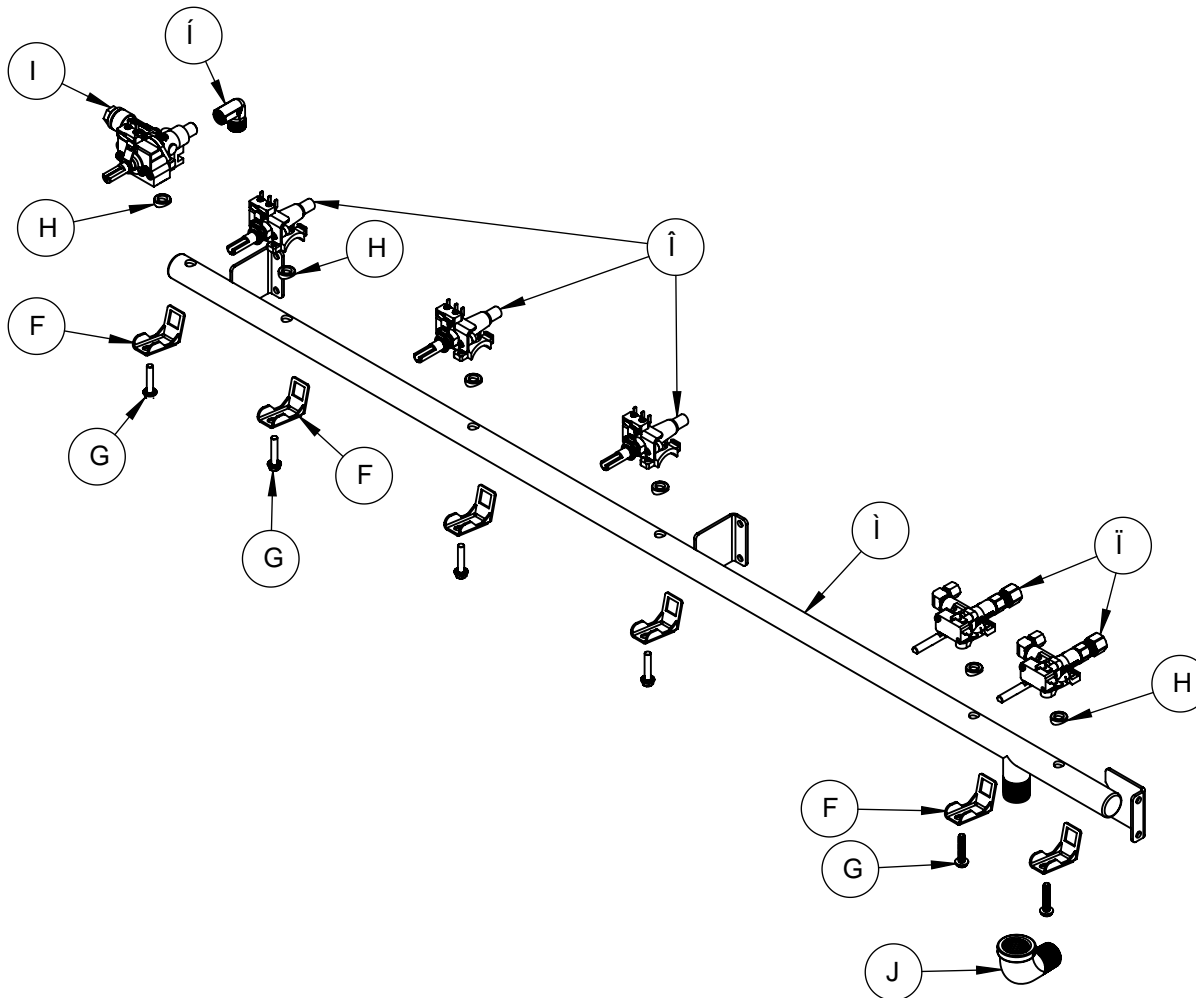
A2 - SERVICE, DELUXE GRILL & SIDE BURNER

			GABR36CX	GMBR36CX	GSBR36CX	GABR42CX	GMBR42CX	GSBR42CX
Item No.	Part No.	DESCRIPTION	QTY	QTY	QTY	QTY	QTY	QTY
1	007455	KNOB ASSY., BURNER, GRILL	3	3	3	4	4	4
2	007716	KNOB ASSY., SIDE BURNER, GRILL	2	2	2	2	2	2
3	010236	SERVICE, MS, 10-24 X 3/8, PH, PAN, SS, PKG 12	3	3	3	3	3	3
4	008053	ADAPTER, 3/8 FLARE X 1/2 NPT FEMALE (for LP units)	1	1	1	1	1	1
5	014309	REGULATOR, 2-STAGE, LP TANK X 3/8 NPT(F) OUTLET (for LP units)	1	1	1	1	1	1
6	006239	REGULATOR, STRAIGHT-THRU, 1/2"NPT (for NG units)	1	1	1	1	1	1
7	009277	NIPPLE, 1/2 NPT X 3", BLACK STEEL	1	1	1	1	1	1
8	026710	KIT, GAS CONNECTION HOSE, 1/2" NPTF X QUICK DISC., 10 FT.	1	1	1	1	1	1
14	006096	IGNITER, HOT SURFACE, BURNER	3	3	3	4	4	4
15	010222	SERVICE, MS, 8-32 X .375, TORX, PAN, SS, PKG 10	1	1	1	1	1	1
16	007674-S	SERVICE, SHROUD, IGNITER, GRILL	3	2	-	4	3	-
17	010242	SERVICE, SMS, #10-24 X 1/2, PH, PAN, TYPE F, SS, PKG 10	1	1	1	1	1	1
18	008622	HARNESS, WIRE, LIGHT & IGNITION, GRILL, 36"	1	-	-	-	-	-
	008607	HARNESS, WIRE, LIGHT & IGNITION, GRILL, 42"	-	-	-	1	-	-
19	027207	HARNESS, Y-CONNECTOR, LED LIGHT BAR, DELUXE CART	1	1	1	1	1	1
20	027206	HARNESS, ELECTRICAL BOX INTERCONNECT, DELUXE CART	1	1	1	1	1	1
21	008666-045	ORIFICE, SIDE BURNER, NG, #45	1	1	1	1	1	1
	008665-056	ORIFICE, SIDE BURNER, LP, #56	1	1	1	1	1	1
22	008666-065	ORIFICE, SIDE BURNER, NG, #65	1	1	1	1	1	1
	008665-075	ORIFICE, SIDE BURNER, LP, #75	1	1	1	1	1	1
23	008666-054	ORIFICE, SIDE BURNER, NG, #54	1	1	1	1	1	1
	008665-065	ORIFICE, SIDE BURNER, LP, #65	1	1	1	1	1	1
24	008675-067	ORIFICE, SIDE BURNER, NG, #67	1	1	1	1	1	1
	008675-076	ORIFICE, SIDE BURNER, LP, #76	1	1	1	1	1	1
25	008067	ASSY., GRATE, SIDE BURNER, DOUBLE	1	1	1	1	1	1
25.1	021396	SERVICE, BUMPER, RUBBER, 9mm DIAM. X 3mm H, PKG 4	1	1	1	1	1	1
26	026767	DRAIN TUBE, SIDE BURNER, DELUXE CART	1	1	1	1	1	1
27	014076	CLAMP, WORM-DRIVE, .313-.625 ID RANGE, SS	2	2	2	2	2	2
28	005688	HOSE, FLEX, 3/16 OD, 18", F-F, NUT/FERRULE	2	2	2	2	2	2
29	017423	SERVICE, HOSE, FLEX, 5/16 OD, 18", F-F	2	2	2	2	2	2
30	008281	ASSY., COVER, SIDE BURNER, DOUBLE	1	1	1	1	1	1
31	011691	SERVICE, BUMPER, PLASTIC, .50 DIAM X 0.11 H, PKG 4	1	1	1	1	1	1
32	026814	SIDE BURNER PANEL, DELUXE CART, W/A	1	1	1	1	1	1
33	015472	PLUG, ROUND, 1.750 DIA. MOUNT, PLASTIC (for LP units)	1	1	1	1	1	1
34	011717	SERVICE, HB, 1/4-20 X .500, SS, PKG 4	2	2	2	2	2	2
35	011714	SERVICE, WSH, FLAT, 1/4 SAE, SS, PKG 4	2	2	2	2	2	2
36	007648	PAN, DRIP, ACCESSORY, GRILL	1	1	1	1	1	1
37	008206	SMOKER BOX SET	1	1	1	1	1	1

			GABR36CX	GMBR36CX	GSBR36CX	GABR42CX	GMBR42CX	GSBR42CX
Item No.	Part No.	DESCRIPTION	QTY	QTY	QTY	QTY	QTY	QTY
38	005896	BURNER, TRELIS, GRILL	3	2	-	4	3	-
39	007500	ASSY., SEAR BURNER (includes screen)	-	1	3	-	1	4
39.1	007627	SCREEN, SEAR BURNER, GRILL	-	1	3	-	1	4
39.2	007619	SHROUD, IGNITER, SEAR BURNER	-	1	3	-	1	4
40	010237	SERVICE, MS, 10-24 X 1/4, HEXHD, SS, PKG 6	1	1	1	1	1	1
41	005959-S	SERVICE, ASSY., BRIQUETTE TRAY, GRILL, 36	3	2	-	-	-	-
	008939-S	SERVICE, ASSY., BRIQUETTE TRAY, GRILL, 42	-	-	-	4	3	-
42	007335	GRATE, STD, GRILL, 36	3	3	3	-	-	-
	008887	GRATE, STD, GRILL, 42	-	-	-	4	4	4
43	029014	MANUAL, USE & CARE, DELUXE OUTDOOR GRILL	1	1	1	1	1	1
44	026827	SIDE PANEL, LH, GRILL, DELUXE CART, W/A	1	1	1	1	1	1
45	005876	HOSE, FLEX, 3/8 OD, 48", F-F, NUT/FERRULE	1	1	1	1	1	1
46	006197	COVER, REAR, GRILL, 36	1	1	1	-	-	-
	008536	COVER, REAR, GRILL, 42	-	-	-	1	1	1
47	006261-036	ACCESS PANEL, REAR, GRILL, 36	1	1	1	-	-	-
	006261-042	ACCESS PANEL, REAR, GRILL, 42	-	-	-	1	1	1
48	006951	FORK, ROTISSERIE (sold each - 2 used in grill)	2	2	2	2	2	2
49	006253-036	SPIT, ROTISSERIE, 36	1	1	1	-	-	-
	006253-042	SPIT, ROTISSERIE, 42	-	-	-	1	1	1
50	006858	WARMING RACK, GRILL, 36	1	1	1	-	-	-
	014082	WARMING RACK, SPLIT, GRILL, 42 (sold each - 2 used in grill)	-	-	-	2	2	2
51	008918	COUNTERBALANCE HINGE ASSY., LH, GRILL, 36	1	1	1	-	-	-
	008919	COUNTERBALANCE HINGE ASSY., LH, GRILL, 42	-	-	-	1	1	1
52	008922	COUNTERBALANCE HINGE ASSY., RH, GRILL, 36	1	1	1	-	-	-
	008923	COUNTERBALANCE HINGE ASSY., RH, GRILL, 42	-	-	-	1	1	1
53	010238	SERVICE, SHCS, 1/4-20 X .375, SS, PKG 6	1	1	1	1	1	1
54	007584	COVER, STAMPED, LH, PIVOT ARM	1	1	1	1	1	1
55	007585	COVER, STAMPED, RH, PIVOT ARM	1	1	1	1	1	1
56	008200	PIVOT ARM ASSY., LH, COUNTERBALANCE HINGE, GRILL	1	1	1	1	1	1
57	008202	PIVOT ARM ASSY., RH, COUNTERBALANCE HINGE, GRILL	1	1	1	1	1	1
58	010240	SERVICE, NUT, LCK, EXPANDING, 1/4-20, SS, PKG 8	1	1	1	1	1	1
59	010201	SERVICE, WSH, FLAT, 9/32 (.281 X .750 X .060), FIBER, PKG 8	1	1	1	1	1	1
60	009342	NUT, WIRE, PORCELAIN, ULTRA HIGH-TEMP, HI-1	1	1	1	1	1	1
61	016805	SNAP BUSHING, 1.75" OD X 1.38" ID, BLACK NYLON (for NG units)	1	1	1	1	1	1

B2 - SERVICE, MANIFOLD, GAS ASSY., DELUXE GRILL

Item No.	Part No.	DESCRIPTION	GABR36CX	GMBR36CX	GSBR36CX	GABR42CX	GMBR42CX	GSBR42CX
			QTY	QTY	QTY	QTY	QTY	QTY
1	006997	CLAMP, GAS VALVE	6	6	6	7	7	7
2	010177	SERVICE, MS, M5-0.8 X 25mm, PH, SERRATED HEXWAS, SS, PKG 5	2	2	2	2	2	2
3	010180	SERVICE, GASKET, VALVE, SADDLE-MOUNT, SEVEN-U, PKG 5	2	2	2	2	2	2
4	007008	VALVE, SAFETY, SADDLE-MOUNT, BW00B0 (FOR ROTISS)	1	1	1	1	1	1
5	000918	ELBOW, ADAPTER, 3/8-27UNS FEMALE X 3/8 COMP.	1	1	1	1	1	1
6	006953	VALVE, SADDLE-MOUNT, SINGLE, GRILL/SEAR	3	3	3	4	4	4
7	007174	VALVE, SADDLE-MOUNT, DUAL, AX00B	2	2	2	2	2	2
8	026694	MANIFOLD, DELUXE GRILL, WA, 36	1	1	1	-	-	-
	026686	MANIFOLD, DELUXE GRILL, WA, 42	-	-	-	1	1	1
9	007508	ELBOW, 1/2 FNPT X 1/2 MNPT, 90 DEG	1	1	1	1	1	1



 HESTAN

0000000000

G9FJ=79ŽA5B=C@Ž; 5G
5GGMŽ89@L9; F=@@

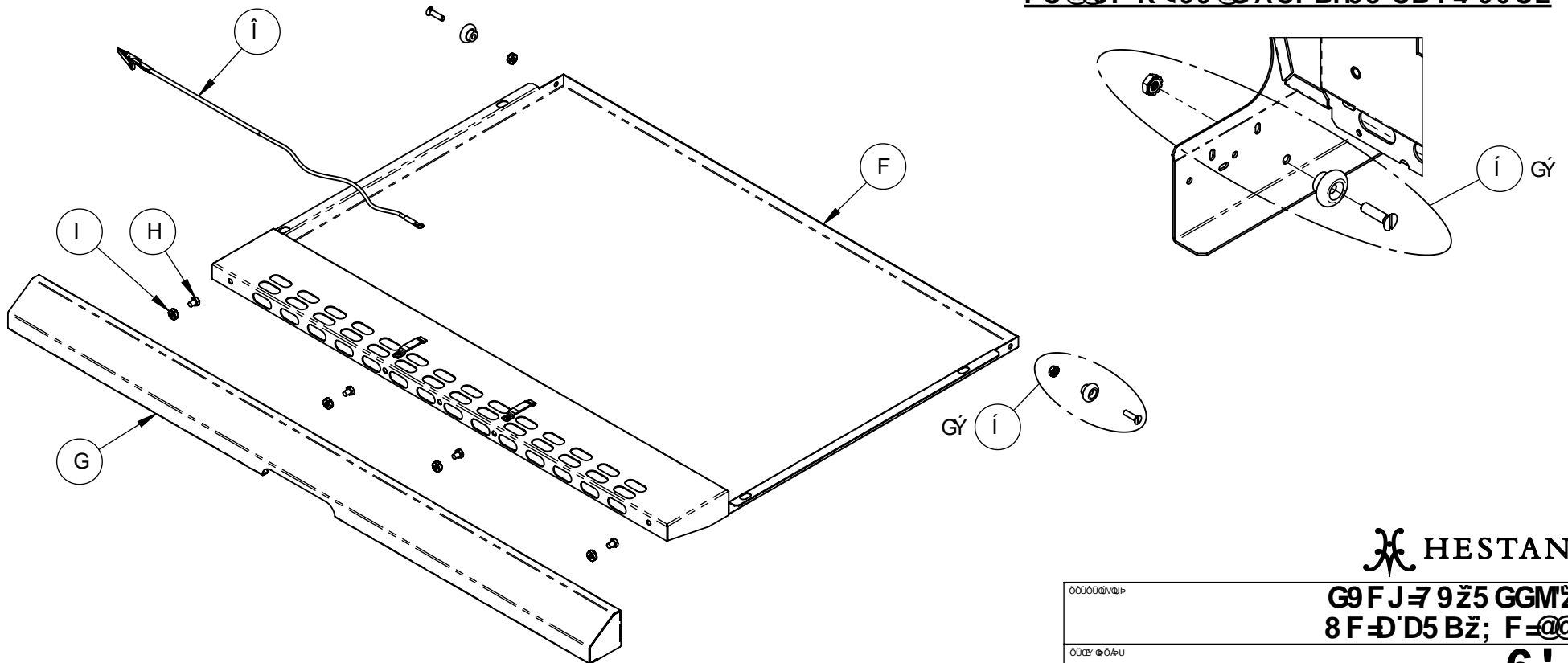
0000000000

6 &

B3 - SERVICE, ASSY., DRIP PAN, GRILL

Item No.	Part No.	DESCRIPTION	GABR36CX	GMBR36CX	GSBR36CX	GABR42CX	GMBR42CX	GSBR42CX
			QTY	QTY	QTY	QTY	QTY	QTY
1	006190	FRAME, DRIP PAN, GRILL, 36"	1	1	1	-	-	-
	008367	FRAME, DRIP PAN, GRILL, 42"	-	-	-	1	1	1
2	006187	CHIN, DRIP PAN, W/HANDLE, GRILL, WA, 36"	1	1	1	-	-	-
	008365	CHIN, DRIP PAN, W/HANDLE, GRILL, WA, 42"	-	-	-	1	1	1
3	010237	SERVICE, MS, 10-24 X 1/4, HEX HD, SS, PKG 6	1	1	1	1	1	1
4	017384	SERVICE, NUT, KEPS, #10-24, SS, PKG 4	1	1	1	1	1	1
5	010127	SERVICE, ROLLER WHEEL & FASTENER, DRIP PAN	4	4	4	4	4	4
6	008029	CLIP, MATCH LIGHT	1	1	1	1	1	1
TO ORDER COMPLETE DRIP PAN, FULLY ASSEMBLED								
	006189-S	SERVICE, ASSY., DRIP PAN, GRILL, 36	1	1	1	-	-	-
	008364-S	SERVICE, ASSY., DRIP PAN, GRILL, 42	-	-	-	1	1	1

FC@@F'K<99@G'ACI BH98'CB':F96CL



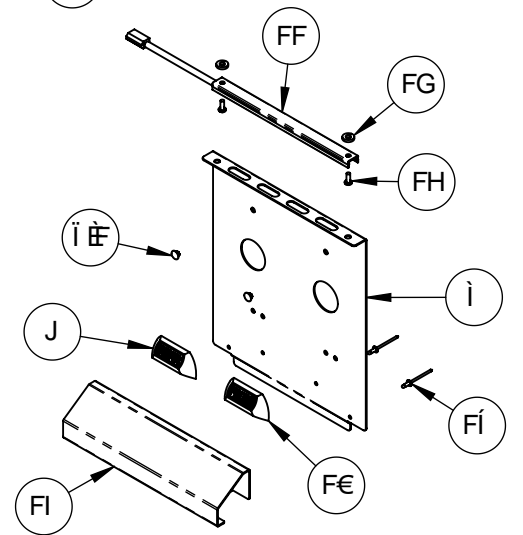
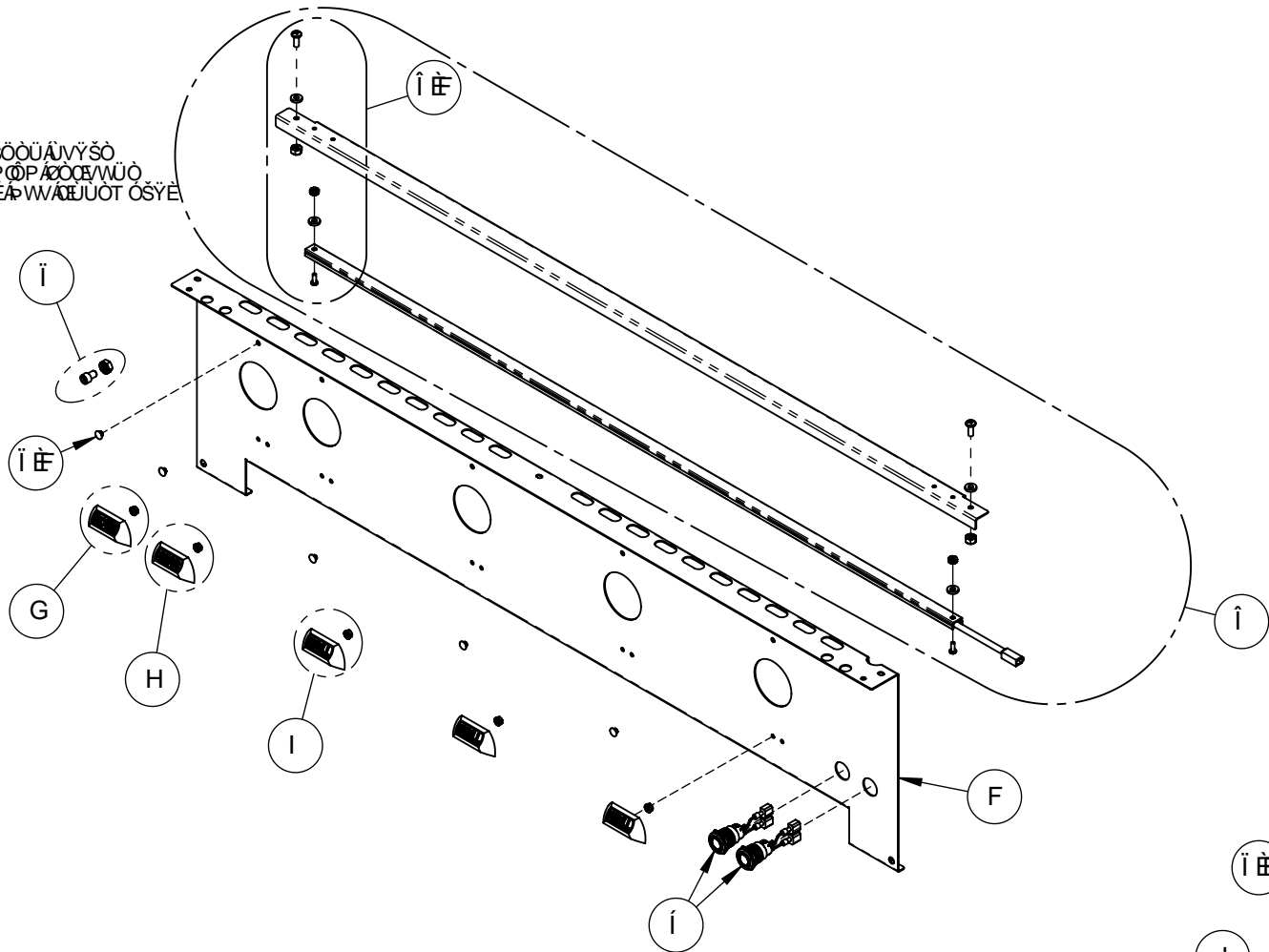
HESTAN

G9FJ=79Ž5GGMŽ
8F=D'D5BŽ; F=@@

6"

0000000000
0000000000

ΕΙΣΑΓΩΓΗ ΤΗΣ ΠΛΑΚΗΣ ΣΤΗΝ ΟΡΟΦΗ
ΟΡΟΦΗΣ ΣΤΗΝ ΟΡΟΦΗ ΣΤΗΝ ΟΡΟΦΗ
ΟΡΟΦΗΣ ΣΤΗΝ ΟΡΟΦΗ ΣΤΗΝ ΟΡΟΦΗ



(& "D5 B9 @G<CK B': CF`F9: 9F9B79

 HESTAN

G9 F J = 7 9 ž 5 GGMŽ
7 CBHF C @D5 B9 @ž; F=@@

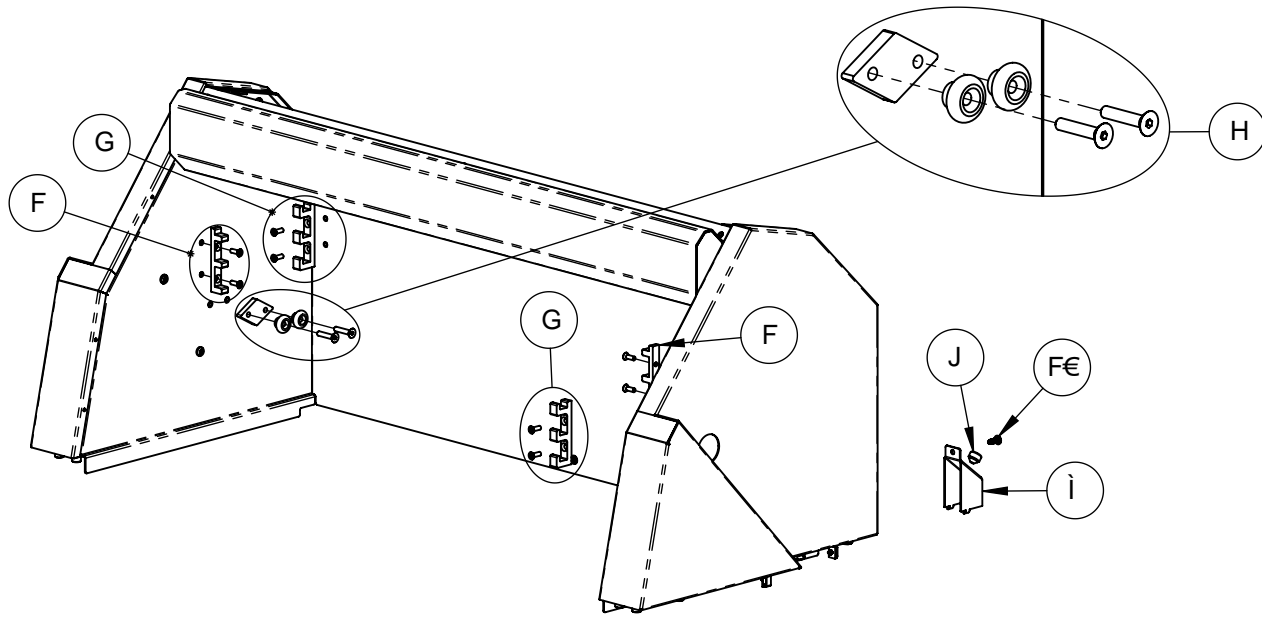
0000000000	6 (
0000000000	

B4 - SERVICE, ASSY., CONTROL PANEL, GRILL

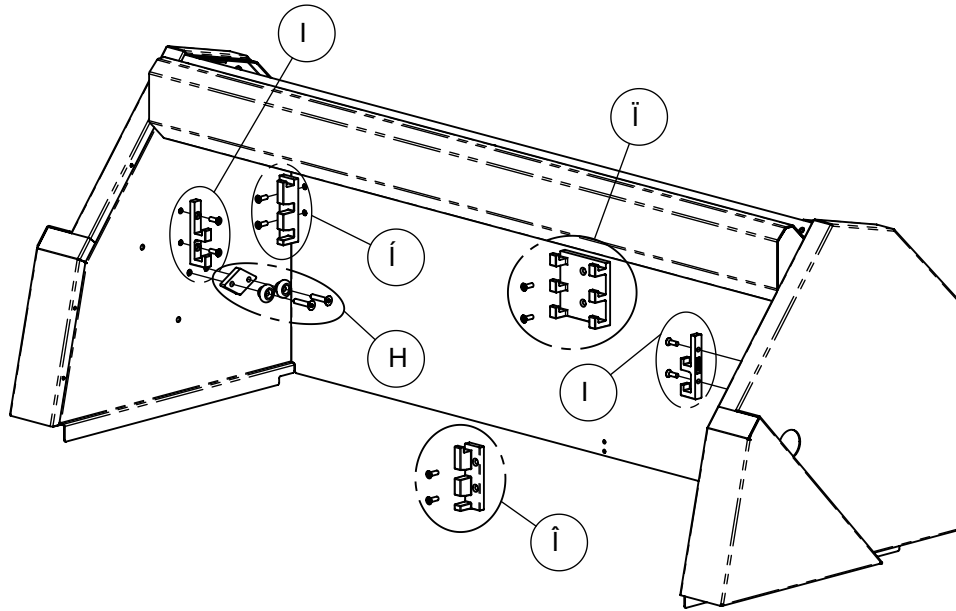
			GABR36CX	GMBR36CX	GSBR36CX	GABR42CX	GMBR42CX	GSBR42CX
Item No.	Part No.	DESCRIPTION	QTY	QTY	QTY	QTY	QTY	QTY
*1	006172-XX	PANEL, CONTROL, GRILL, 36	1	1	1	-	-	-
	008411-XX	PANEL, CONTROL, GRILL, 42	-	-	-	1	1	1
2	007797	ASSY., VALVE MARKER, ROTIS	1	1	1	1	1	1
3	007799	ASSY., VALVE MARKER, SEAR	-	1	3	-	1	4
4	007573	ASSY., VALVE MARKER, GRILL	3	2	-	4	3	-
5	020971	SWITCH, PUSHBUTTON, 19mm, SPST, 5A, 250VAC	2	2	2	2	2	2
6	043732	SERVICE, LED LIGHT BAR ASSY. & FASTENERS, 36	1	1	1	-	-	-
	043733	SERVICE, LED LIGHT BAR ASSY. & FASTENERS, 42	-	-	-	1	1	1
6.1	017836	SERVICE, LED BAR FASTENERS	1	1	1	1	1	1
7	010163	SERVICE, INDICATOR, OFF POSITION, CONTROL KNOB, GRILL	4	4	4	5	5	5
7.1	017808	SERVICE, PLUG, 1/4-20 SHCS, CHROME, PKG 5	1	1	1	1	1	1
*8	026471	PANEL, CONTROL, SIDE BURNER, DELUXE (304SS)	1	1	1	1	1	1
	026846-XX	PANEL, CONTROL, SIDE BURNER, DELUXE - (COLOR)	1	1	1	1	1	1
9	007801	ASSY., VALVE MARKER, REAR	1	1	1	1	1	1
10	007800	ASSY., VALVE MARKER, FRONT	1	1	1	1	1	1
11	007534-012	LED LIGHT BAR, HESTAN GRILL, 12	1	1	1	1	1	1
12	012253	SERVICE, WSH, FLAT, #10 (.438 X .203 X .094), NYLON, PKG 4	1	1	1	1	1	1
13	017829	SERVICE, MS, 6-32 X .375, PH, PAN, SS, PKG 2	1	1	1	1	1	1
14	026847	CHIN, SIDE BURNER, DELUXE CART	1	1	1	1	1	1
15	034693	SERVICE, POP RIVET, 1/8DIA X .275L, SS, PKG 8	1	1	1	1	1	1
TO ORDER COMPLETE GRILL CONTROL PANEL, FULLY ASSEMBLED - SPECIFY COLOR								
	043717-XX	SERVICE, CONTROL PANEL, FULL ASSY., GRILL, 36-T	1	-	-	-	-	-
	043723-XX	SERVICE, CONTROL PANEL, FULL ASSY., GRILL, 36-M	-	1	-	-	-	-
	043720-XX	SERVICE, CONTROL PANEL, FULL ASSY., GRILL, 36-S	-	-	1	-	-	-
	043718-XX	SERVICE, CONTROL PANEL, FULL ASSY., GRILL, 42-T	-	-	-	1	-	-
	043724-XX	SERVICE, CONTROL PANEL, FULL ASSY., GRILL, 42-M	-	-	-	-	1	-
	043721-XX	SERVICE, CONTROL PANEL, FULL ASSY., GRILL, 42-S	-	-	-	-	-	1

*FOR COLORED PANEL, SPECIFY COLOR WHEN ORDERING (CHECK YOUR S/N)

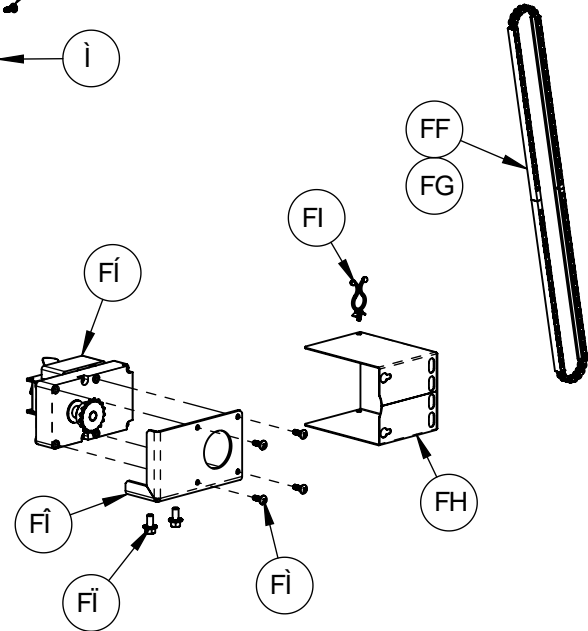
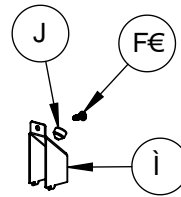
COLOR CODE	DESCRIPTION
	STAINLESS STEEL
-BK	STEALTH - BLACK
-WH	FROTH - WHITE
-RD	MATADOR - RED
-YW	SOL - YELLOW
-OR	CITRA - ORANGE
-BG	TIN ROOF - BURGUNDY
-PP	LUSH - PURPLE
-BU	PRINCE - BLUE
-GR	GROVE - GREEN
-GG	PACIFIC FOG - DARK GRAY
-TQ	BORA BORA - TURQUOISE



56CJ9'5DD@9GHC" *"; F=@G'K#G-B; @'K5FA-B; 'F57?



56CJ9'5DD@9GHC' (&"; F=@G'K#8I 5 @K5FA-B; 'F57?G



 HESTAN

G9FJ=79Z75BCDMZ
89@ L9'; F=@@

000000000000

000000000000

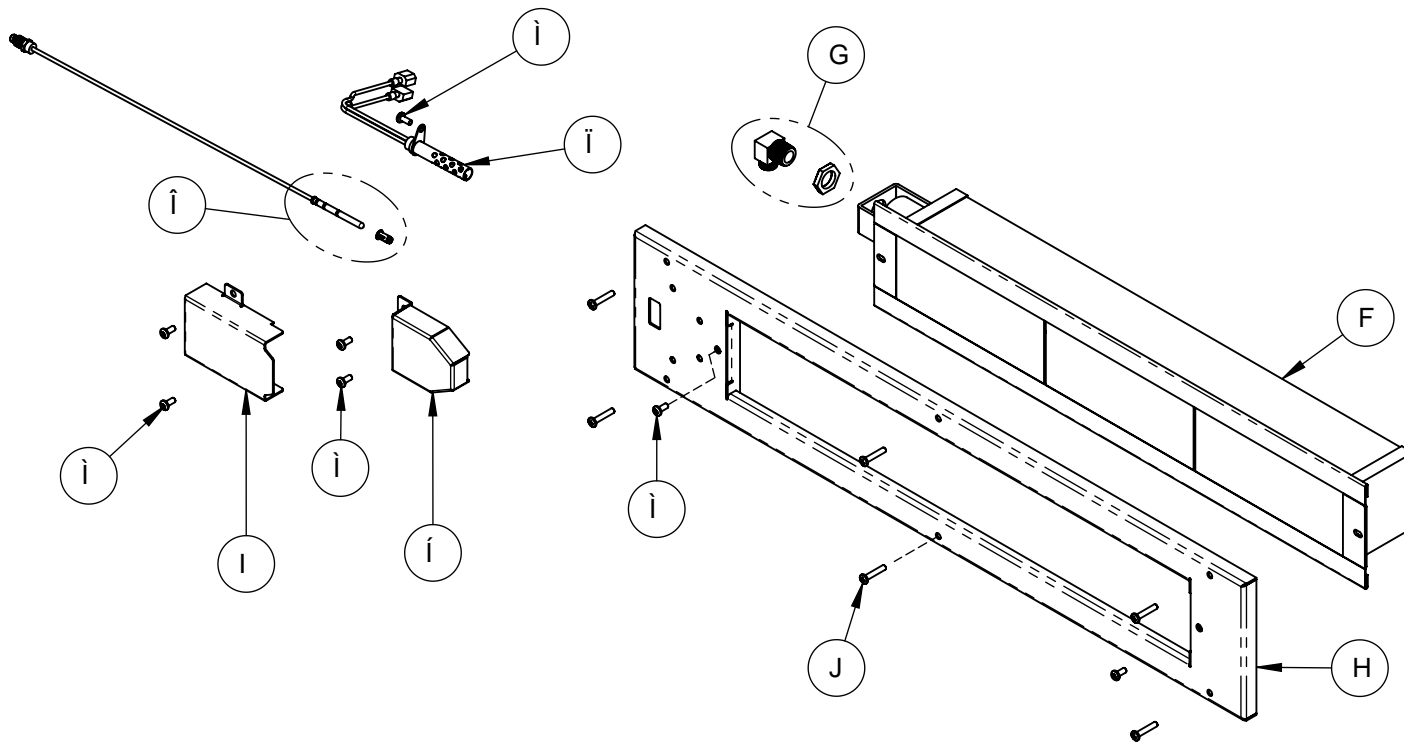
6)

B5 - SERVICE, CANOPY, DELUXE GRILL

Item No.	Part No.	DESCRIPTION	GABR36CX	GMBR36CX	GSBR36CX	GABR42CX	GMBR42CX	GSBR42CX
			QTY	QTY	QTY	QTY	QTY	QTY
1	010133	SERVICE, WARMING RACK LADDER & SCREWS, GRILL	2	2	2	-	-	-
2	010134	SERVICE, WARMING RACK LADDER LATCHED/SCREWS, GRILL	2	2	2	-	-	-
3	006824-S	SERVICE, ASSY., ROLLER CRADLE, GRILL	1	1	1	1	1	1
4	018143	SERVICE, SPLIT WARMING RACK & SCREWS, SIDE LADDER	-	-	-	2	2	2
5	018145	SERVICE, SPLIT WARMING RACK & SCREWS, REAR-LEFT LADDER	-	-	-	1	1	1
6	018146	SERVICE, SPLIT WARMING RACK & SCREWS, REAR-RIGHT LADDER	-	-	-	1	1	1
7	018144	SERVICE, SPLIT WARMING RACK & SCREWS, REAR-CENTER LADDER	-	-	-	1	1	1
8	007715	STOP, LID, GRILL	2	2	2	2	2	2
9	010197	SERVICE, BUMPER, RUBBER, .50 DIAM. X .250 H, PKG 4	1	1	1	1	1	1
10	010242	SERVICE, SMS, #10-24 X 1/2, PH, PAN, TYPE F, SS, PKG 10	1	1	1	1	1	1
11	007690	CHAIN, ROLLER, ANSI #25, GRILL	1	1	1	1	1	1
12	007692	MASTER LINK, ANSI #25 CHAIN	1	1	1	1	1	1
13	006162	COVER, ROTISS MOTOR, GRILL	1	1	1	1	1	1
14	012018	STANDOFF, TWIST-LOCK, STL-600-3-01	1	1	1	1	1	1
15	010132	SERVICE, ASSY., GEAR MOTOR w/ SPROCKET, GRILL	1	1	1	1	1	1
16	008543	BRACKET, MOTOR MOUNT, GRILL, WA	1	1	1	1	1	1
17	010175	SERVICE, HB, SERRATED FLANGE, 1/4-20 X .50, SS, PKG 2	1	1	1	1	1	1
18	010174	SERVICE, MS, 10-32 X 1/2, PH, PAN, SS, PKG 4	1	1	1	1	1	1

B6 - SERVICE, ASSY., ROTISS BURNER, GRILL

Item No.	Part No.	DESCRIPTION	GABR36CX	GMBR36CX	GSBR36CX	GABR42CX	GMBR42CX	GSBR42CX
			QTY	QTY	QTY	QTY	QTY	QTY
1	006098	BURNER, INFRARED, ROTISS, HR14	1	1	1	-	-	-
	008278	BURNER, INFRARED, ROTISS, HR18	-	-	-	1	1	1
2	010218	SERVICE, ORIFICE ELBOW & NUT, IR BURNER, GRILL	1	1	1	1	1	1
3	008413	FRAME, ROTISS BURNER, GRILL, WA, 36	1	1	1	-	-	-
	008414	FRAME, ROTISS BURNER, GRILL, WA, 42	-	-	-	1	1	1
4	006115	WIRE COVER, ROTISS IGNITER, GRILL	1	1	1	1	1	1
5	007554-S	SERVICE, SHROUD, IGNITER, ROTISS BURNER, GRILL	1	1	1	1	1	1
6	010220	SERVICE, THERMOCOUPLE & CLIP, IR BURNER, GRILL	1	1	1	1	1	1
7	006094	IGNITER, HOT SURFACE, ROTIS.	1	1	1	1	1	1
8	010222	SERVICE, MS, 8-32 X .375, TORX, PAN, SS, PKG 10	1	1	1	1	1	1
9	010221	SERVICE, MS, 8-32 X 1.25, PH, PAN, SS, PKG 6	1	1	1	1	1	1



HESTAN

G9FJ79Z5GGMZ
FCHGG6I FB9FZ; F=@@

000000000000

000000000000

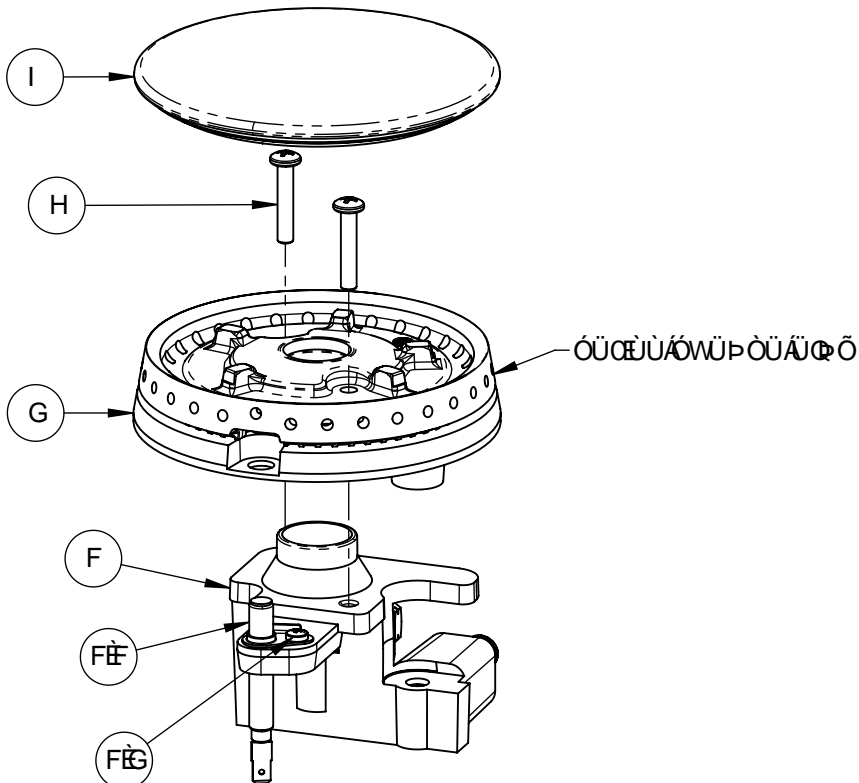
6*

B7 - SERVICE, ASSY., BURNER, DUAL STACKED, LARGE

Item No.	Part No.	DESCRIPTION	GABR36CX	GMBR36CX	GSBR36CX	GABR42CX	GMBR42CX	GSBR42CX
			QTY	QTY	QTY	QTY	QTY	QTY
1	007949	ORIFICE HOLDER, STACKED BURNER, LARGE	1	1	1	1	1	1
1.1	010331	SERVICE, ASSY., IGNITER WITH BRACKET	1	1	1	1	1	1
1.2	017815	SERVICE, IGNITER SCREW, PKG 2	1	1	1	1	1	1
2	007950	BASE, STACKED BURNER, LARGE	1	1	1	1	1	1
3	017811	SERVICE, MS, 8-32 X .875, PH, PAN, SS, PKG 4	1	1	1	1	1	1
4	007951	CAP, STACKED BURNER, LARGE	1	1	1	1	1	1

NOTES:

- ITEM 1 COMES ASSEMBLED WITH ITEMS 1.1 AND 1.2.
- ORDER P/N **007955-S** FOR THE COMPLETE ASSEMBLY.



HESTAN

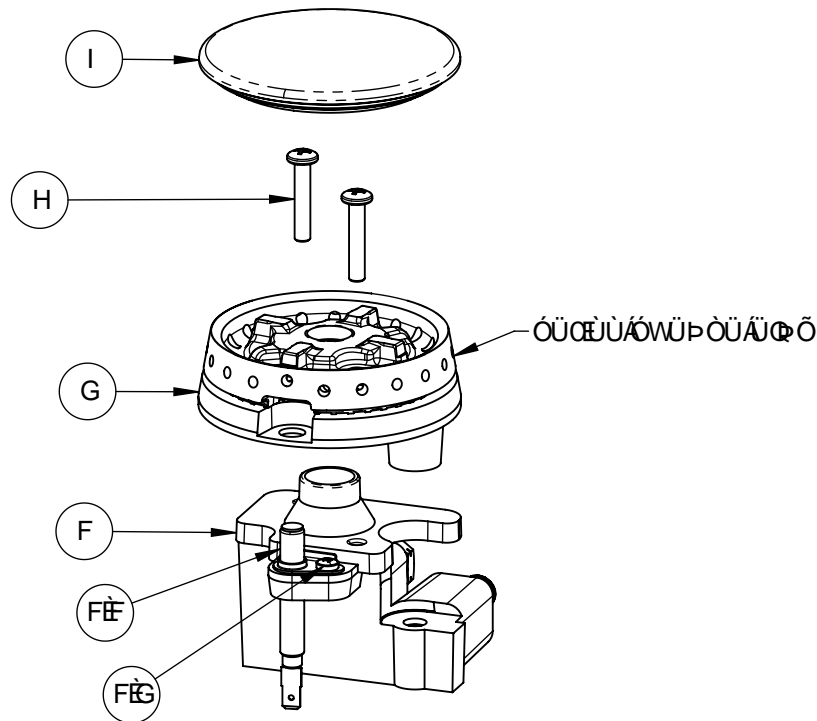
G9FJ79Z5 GGMZ61FB9FZ
 815@GH57?98Z@F;9
6+

B8 - SERVICE, ASSY., BURNER, DUAL STACKED, SMALL

Item No.	Part No.	DESCRIPTION	GABR36CX	GMBR36CX	GSBR36CX	GABR42CX	GMBR42CX	GSBR42CX
			QTY	QTY	QTY	QTY	QTY	QTY
1	007952	ORIFICE HOLDER, STACKED BURNER, SMALL	1	1	1	1	1	1
1.1	010331	SERVICE, ASSY., IGNITER WITH BRACKET	1	1	1	1	1	1
1.2	017815	SERVICE, IGNITER SCREW, PKG 2	1	1	1	1	1	1
2	007953	BASE, STACKED BURNER, SMALL	1	1	1	1	1	1
3	017811	SERVICE, MS, 8-32 X .875, PH, PAN, SS, PKG 4	1	1	1	1	1	1
4	007954	CAP, STACKED BURNER, SMALL	1	1	1	1	1	1

NOTES:

1. ITEM 1 COMES ASSEMBLED WITH ITEMS 1.1 AND 1.2.
2. ORDER P/N **007956-S** FOR THE COMPLETE ASSEMBLY.



HESTAN

<small>0000000000</small>	G9 F J 7 9 Ž 5 G M Ž 6 I F B 9 F Ž 8 I 5 @ G H 5 7 ? 9 8 Ž G A 5 @@
<small>0000000000</small>	6,

B9 - SERVICE, ASSY., RE-IGNITERS BOX, DELUXE CART

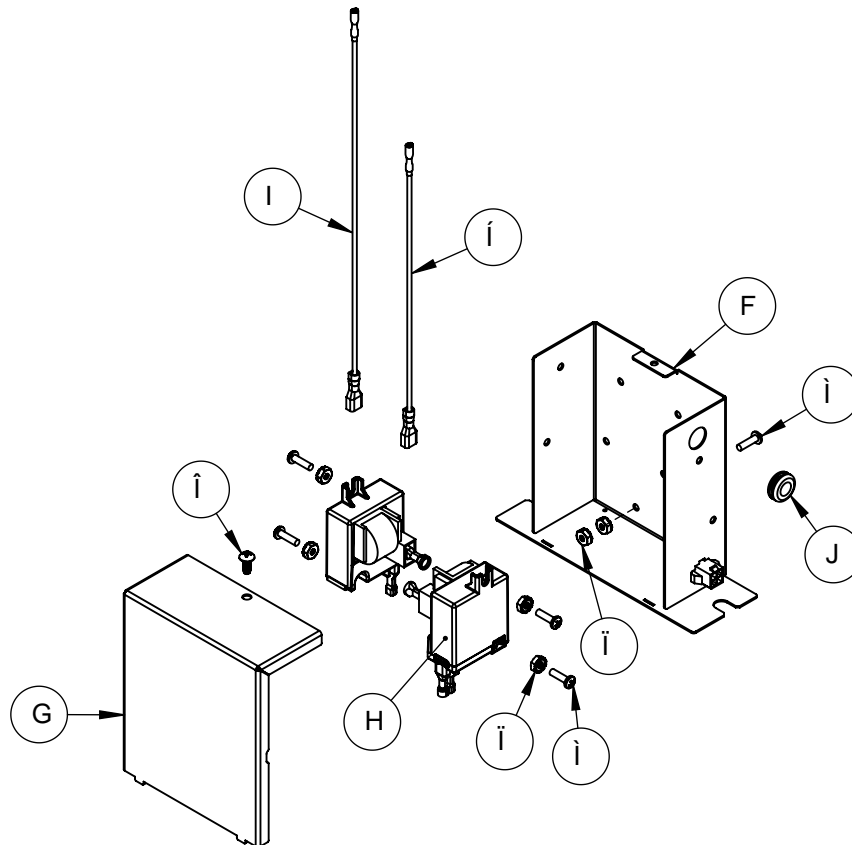
Item No.	Part No.	DESCRIPTION	GABR36CX	GMBR36CX	GGBR36CX	GABR42CX	GMBR42CX	GGBR42CX
			QTY	QTY	QTY	QTY	QTY	QTY
1	037540	BASE, RE-IGNITERS BOX, DELUXE CART	1	1	1	1	1	1
2	037541	COVER, RE-IGNITERS BOX, DELUXE CART	1	1	1	1	1	1
3	032028	MODULE, RE-IGNITER, SINGLE POINT, RI 120F-1, 120V, 3mA	2	2	2	2	2	2
4	011658	SERVICE, WIRE, IGNITER, 18"	1	1	1	1	1	1
5	011655	SERVICE, WIRE, IGNITER, 13"	1	1	1	1	1	1
6	011852	SERVICE, SMS, #8-32 X 3/8, PH, PAN, TYPE F, SS, PKG 4	1	1	1	1	1	1
7	012688	SERVICE, NUT, KEPS, 6-32, SS, PKG 4	2	2	2	2	2	2
8	034675	SERVICE, MS, 6-32 X .50, PH, PAN, SS, PKG 6	1	1	1	1	1	1
9	001464	GROMMET, 5/8 OD, 5/16 ID, 1/16 THK PNL, 1/2 PNL HOLE	1	1	1	1	1	1

TO ORDER COMPLETE ASSEMBLY

026838-S	SERVICE, ASSY., RE-IGNITERS BOX, DELUXE CART
----------	--

NOTES:

1. SEE NOTE ON THE COVER OF THIS PARTS LIST ABOUT EARLIER VERSIONS OF THIS PRODUCT. THE BOX, IGNITION MODULES, AND OTHER ITEMS INSIDE THIS ASSEMBLY MAY BE DIFFERENT THAN THOSE SHOWN ABOVE.



HESTAN

G9FJ 7 9ž5 GGMžF9!ž B#H9FG
6CLž89 @ L9 75FH
6 -

