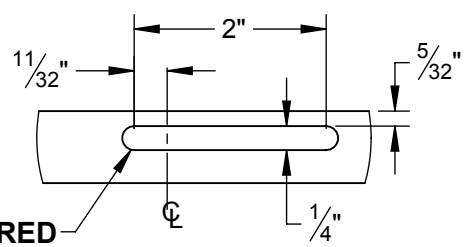
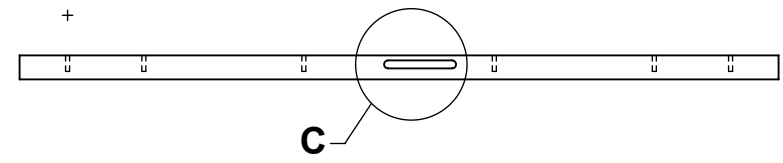


**BACK VIEW**

**BACK VIEW**

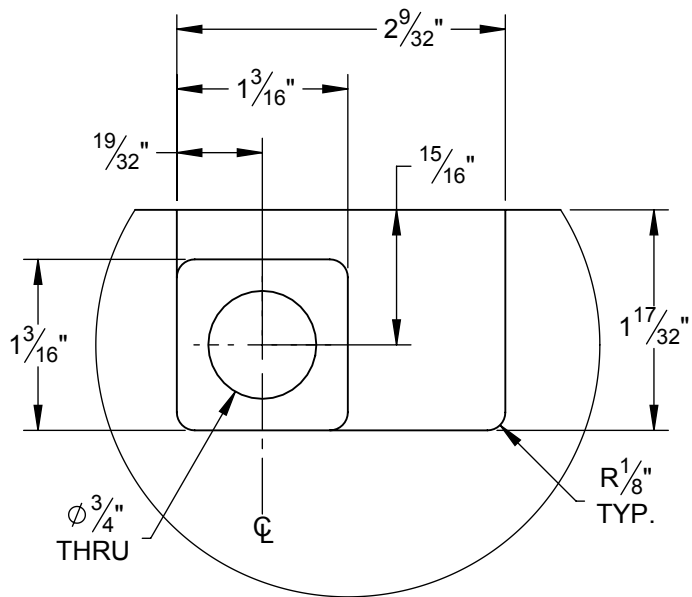
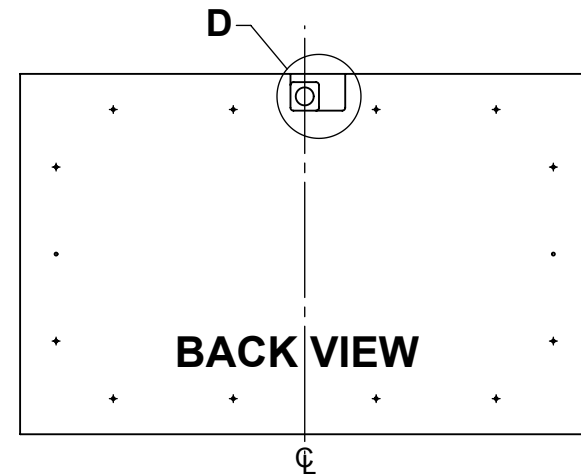
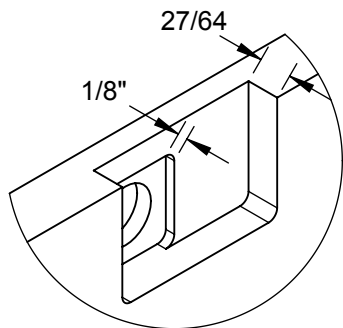
**NOTE: IF ADDING LOCKS,  
SEE SHEET 2 FOR DETAILS**



**THIS FEATURE ONLY REQUIRED  
ON UPPER DRAWER WITH LOCKS**

**DETAIL C  
SCALE 1 : 2**

B		3344	REVISE DESCRIPTION		hwenzel	5/6/2020
REVISION	ECN	DESCRIPTION OF CHANGE			DRAWN BY	DATE
UNLESS OTHERWISE SPECIFIED DO NOT SCALE DRAWING INTERPRET DIMENSIONS AND TOLERANCES PER ASME Y14.5M-1994 DIMENSIONS ARE IN INCHES TOLERANCES APPLY AS SHOWN BELOW			THIRD ANGLE PROJECTION	PROPRIETARY NO PART OF THIS DOCUMENT MAY BE REPRODUCED, STORED IN A RETRIEVAL SYSTEM, OR TRANSMITTED IN ANY FORM, WITHOUT THE WRITTEN PERMISSION OF Hestan Commercial Corporation. THIS DOCUMENT OR ANY COPIES SHALL BE RETURNED UPON WRITTEN REQUEST.		
X ±0.1 .XX ±0.06 .XXX ±0.030 ANGLES ±1°			DESCRIPTION	<b>WOOD OVERLAY, SOLID 24" DRAWER, INDOOR/OUTDOOR REFRIGERATION</b>		
DRAWN BY	DATE	DRAWING NO		REVISION		
hwenzel	2019-01-09	028373		B		
CHECKED BY	DATE	SCALE	SIZE	MATERIAL	FINISH	SHEET NO.
VS	2019-07-26	1:6	A	Wood	N/A	1 OF 2



**DETAIL D**  
**SCALE 3 : 4**

DRAWING NO		<b>028373</b>			REVISION	<b>B</b>
SCALE	SIZE	MATERIAL	FINISH	SHEET NO.		
1:8	<b>A</b>	Wood	N/A	2 OF 2		