

# Owner's Manual



**YellowGate** 

EUROPEAN INSTALLATION KIT

**One Gate. Fits All. Stops Falls.**  
888.663.0015 | [yellowgate.com](http://yellowgate.com)

This product and/or its components may be covered by one or more patents, see [www.saferack.com/patent](http://www.saferack.com/patent)

Please take a moment to inspect your new equipment and look for shipping damage. Please check packaging list on sheet 3 against your equipment to ensure all parts have arrived without damage.



\*European extension is compatible with gates as small as 24.75" In the parallel configuration and 21.125" In the perpendicular configuration.

## Tools Needed For Installation



**NOTE:** no power tools are to be used assembling this product.



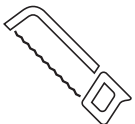
1 or 2 people are recommended for assembly



2.5 mm hex key



5.5 mm wrench



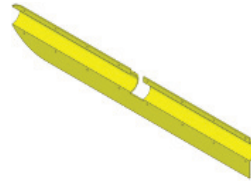
Hand saw



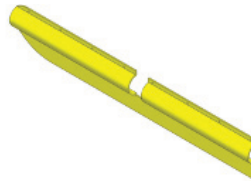
**WARNING:** This product can expose you to chemicals including cadmium, which is known to the State of California to cause cancer, and/or birth defect or other reproductive harm.

For more information go to [www.P65warnings.ca.gov](http://www.P65warnings.ca.gov)

## Packing List



Left extension half



Right extension half



Left end cap half



Right end cap half



(16) Hardware sets

# STEP 1:

Position kit components on bottom rail of gate as shown



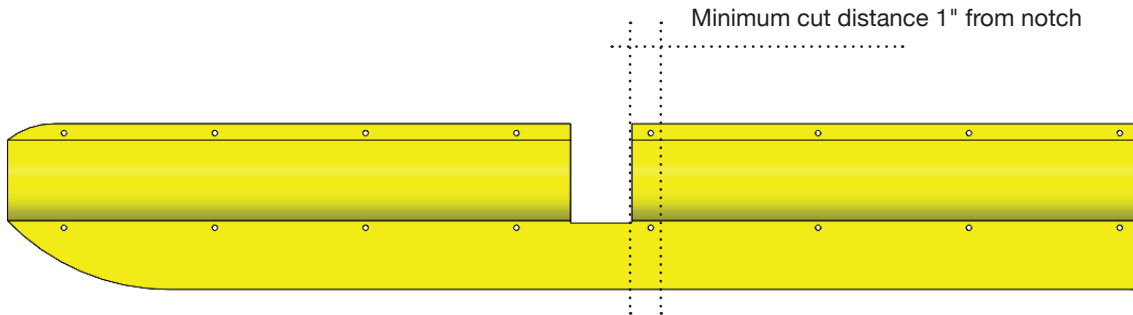
# STEP 2:

Mark cut line as shown



# STEP 3:

Remove part from gate and cut



# STEP 4:

Install all components using provided hardware.  
Be sure all mounting holes are used and connections as hand tight.

