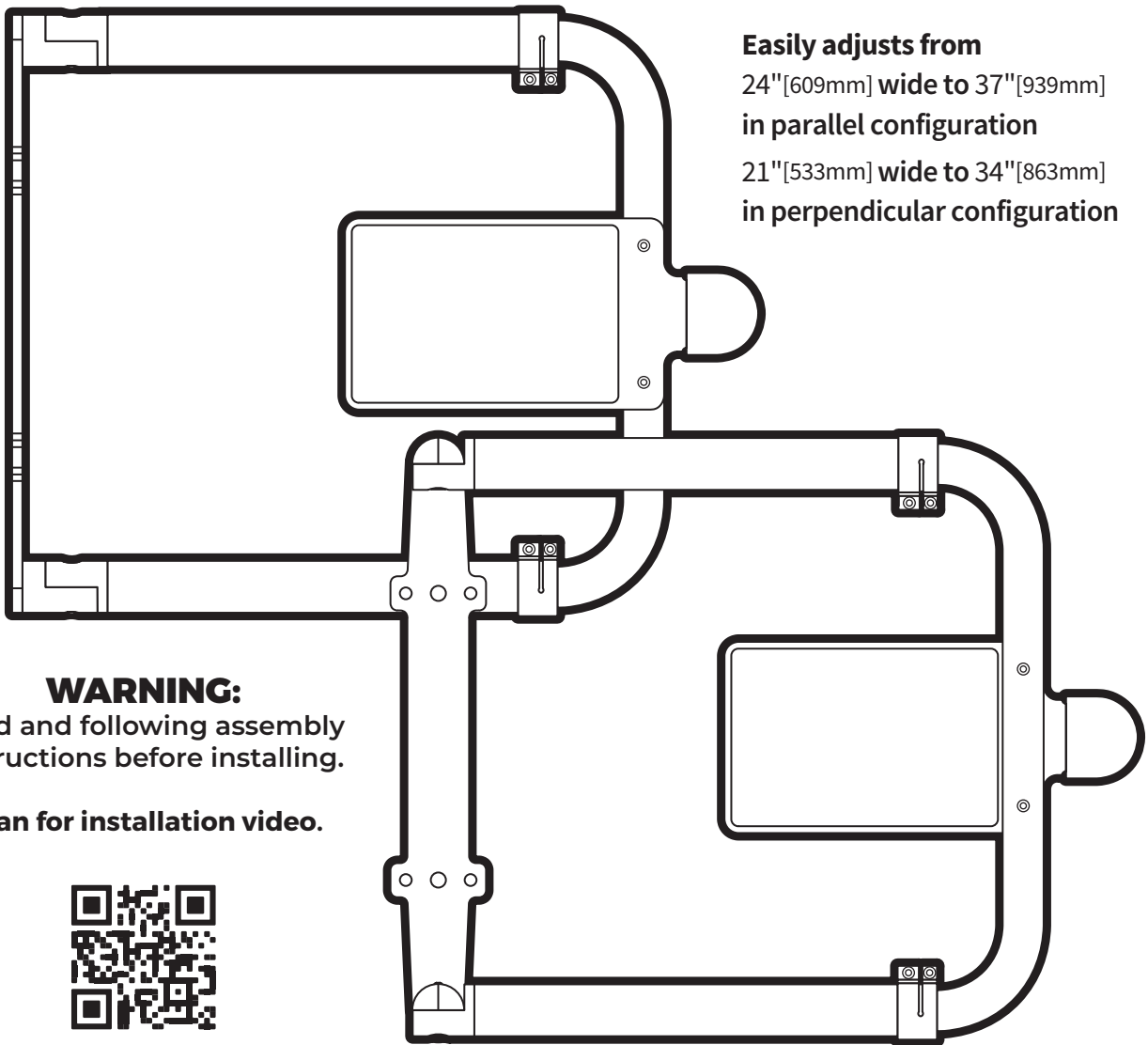


YellowGate

THE UNIVERSAL SWING GATE



Easy as **1/2/3**



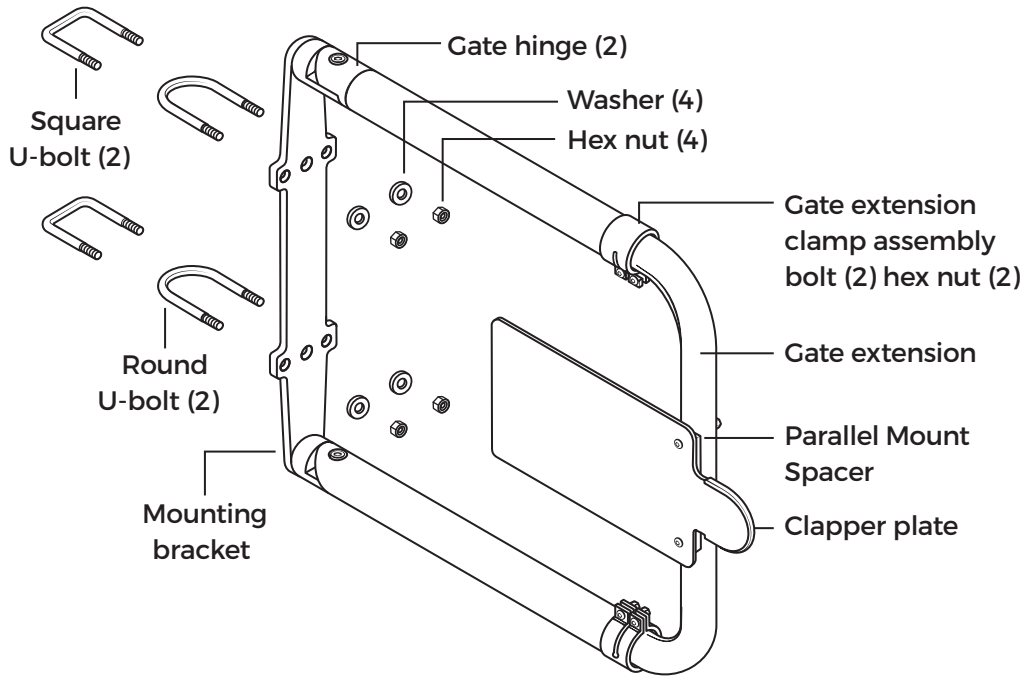
Easily adjusts from
24"[609mm] wide to 37"[939mm]
in parallel configuration
21"[533mm] wide to 34"[863mm]
in perpendicular configuration

WARNING:
Read and following assembly
instructions before installing.

Scan for installation video.



INCLUDED PARTS



TOOLS NEEDED

WRENCH

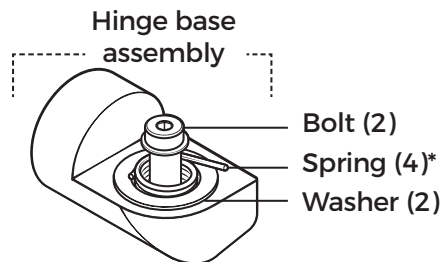
- 9/16" wrench
- 3/4" wrench
- 7/16" wrench

ALLEN KEY

- 5/32" allen key
- 1/8" allen key
- 3/32" allen key
- 3/16" allen key

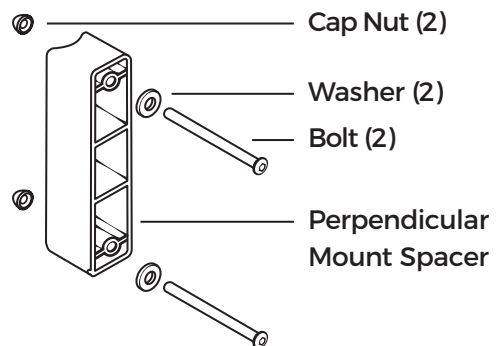
FLAT HEAD SCREWDRIVER

BLUE THREAD LOCKING COMPOUND



*2 Parallel Springs

*2 Perpendicular Springs

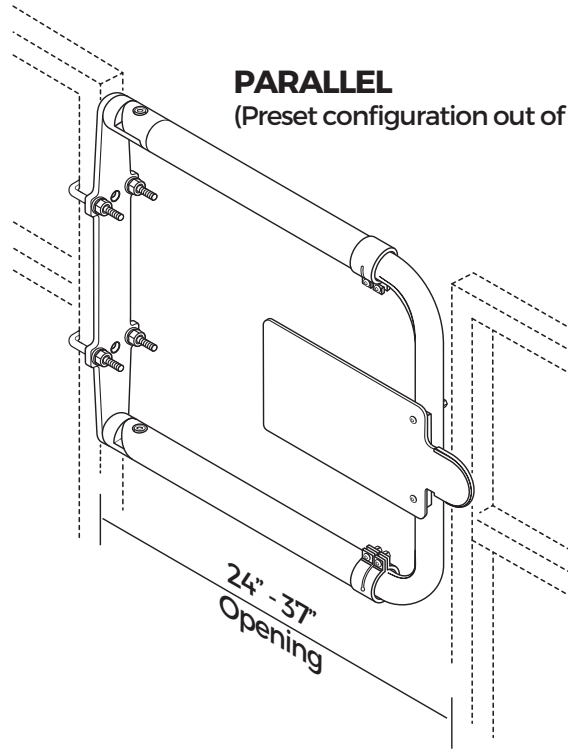


STEP 1

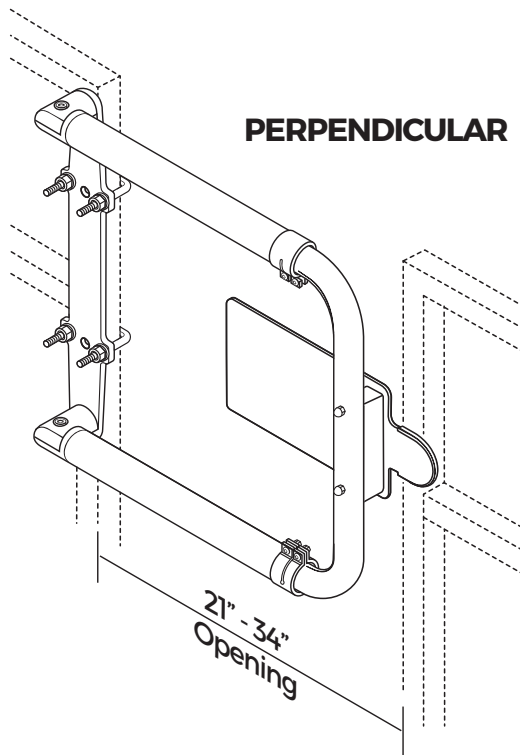
Determine which orientation of the gate hinge and clapper plate is needed for application.

PARALLEL

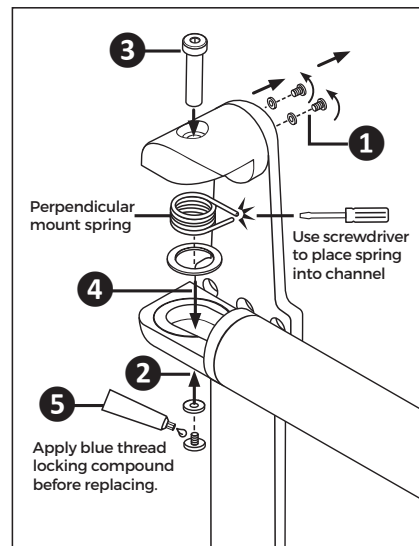
(Preset configuration out of the box)



PERPENDICULAR



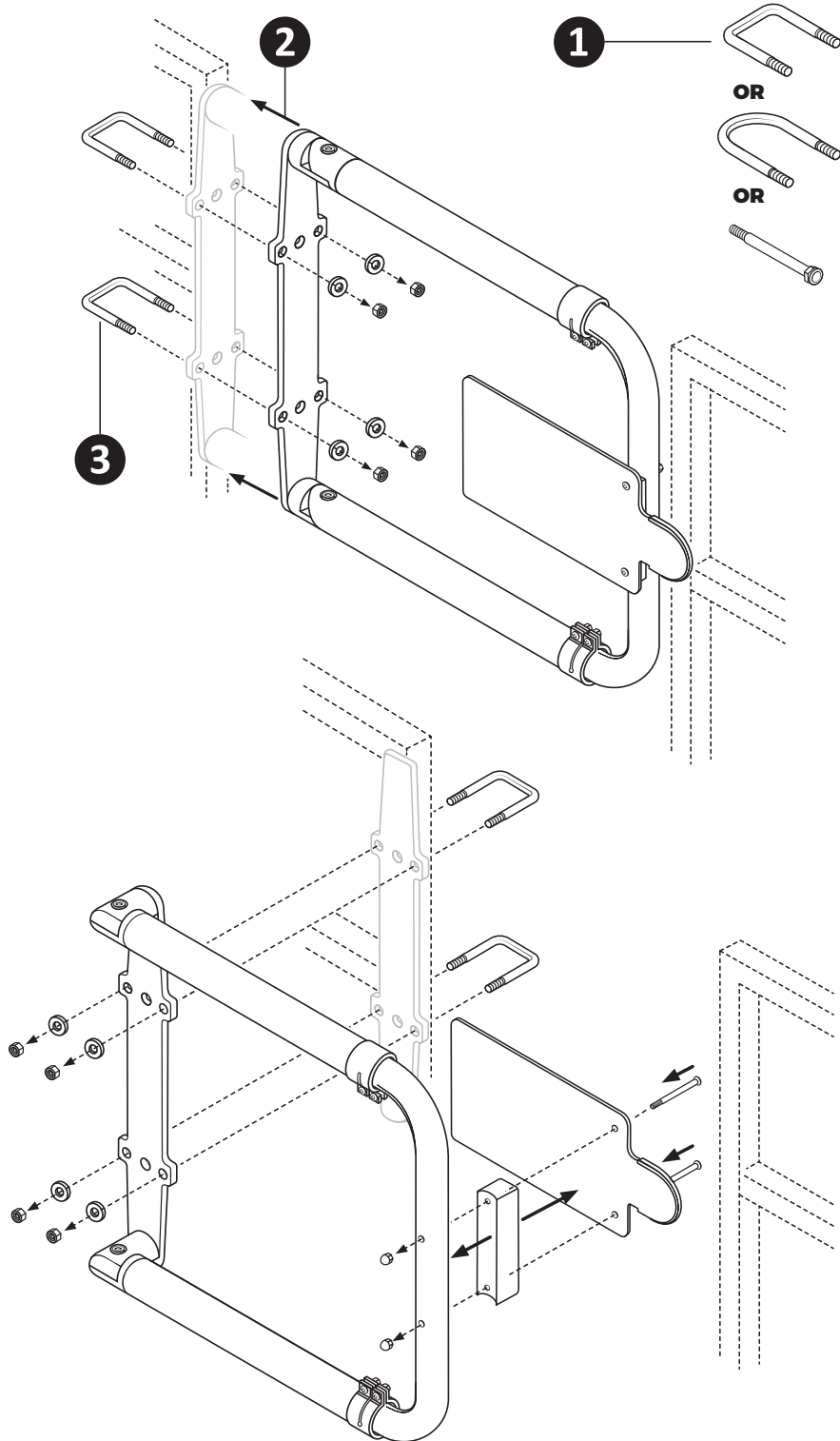
Adjustments required for perpendicular mounting.



*Repeat step 1-5 for lower gate hinge.

STEP 2

Attach gate using one of the 3 types of bolt anchors provided.



STEP 3

Adjust gate to proper length and tighten clamps to set.

