

# Career Preparation Programme

UK and Canada

Frequently asked questions



01



## How long is the period of employment?

- › If you secure a job, you must be prepared to commit to full-time work for a minimum of six months. If your employer offers a longer-term position, you may continue working beyond that period.

02



## What are the benefits?

- › Gain relevant work experience.
- › Networking opportunities within the luxury hotel, hospitality or tourism industries in the UK or Canada.
- › Apply the knowledge acquired at Bayswater in a real business setting.
- › Potential employment opportunities.

03



## Who is the programme suitable for?

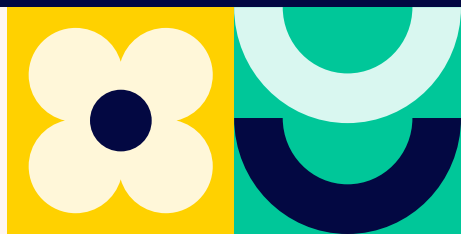
- › Individuals seeking job opportunities in the luxury hotel, hospitality and tourism industries in the UK or Canada.
- › Those with previous work experience in the luxury hotel, tourism or recreation industry, who wish to grow in an international setting.
- › Youth Mobility Scheme (YMS) visa holders for the UK and Work Holiday Visa holders for Canada. (Students are responsible for their visa status.)

04



## What is the process?

- › The Career Preparation Programme is an educational programme, not a placement service. The success of your career experience depends on various factors, including market demands, your skills and experience, and your ability to present yourself effectively in an interview with potential employers.
- › It is essential to attend all career modules, complete assignments, actively participate in the job search process, fulfil projects or reports assigned by advisors, and act professionally while on the job as a representative of Bayswater.
- › Bayswater supports students in the process of gaining up to three interview opportunities after they graduate the study portion of the programme. Once you've secured a role the process is considered complete.





05

## How can I register for the programme?

- › Apply for the Career Preparation Programme with a minimum of 8 weeks' study.



06

## How does Bayswater assist me?

We provide:

- › Four hours a week on the Career Skills module.
- › One-on-one consultations and support.
- › Personalised mock interviews and feedback.
- › CV support and tailoring.
- › Connection with local employers.



07

## Can I quit my job?

- › If you need to resign from the job you have been placed in, for personal reasons, you have the right to do this in accordance with the terms of your employment contract.



08

## Can I receive a refund if I cancel before placement?

- › The career placement programme is the course you complete at the school leading to employment at the end of the course. Normal T&Cs apply.



09

## How much will I be paid?

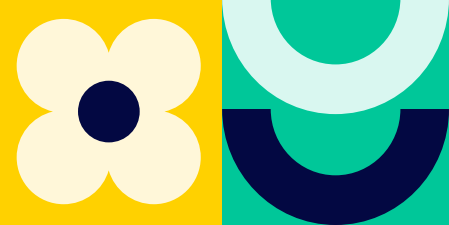
- › Rates of pay are determined by the employer. We recommend employers pay students according to their organisation's regular pay scale, considering job duties and level of responsibility. Typically, wages range from £12.21 to £13.15 per hour in the UK, and CAD \$17.40 per hour (\$15 in Alberta) in Canada. Rates, benefits, and working conditions may vary among employers.
- › Some hotels may offer meals and employee discounts, but this depends on the employer.



10

## What are typical working hours?

- › Working hours can vary depending on the role and employer. Some roles are approximately 9:00 AM to 5:30 PM, while other roles require shift work. Shifts may include early mornings, evenings, weekends, and night shifts. Typical hours are 40 hours a week, with 2 days off a week.



11



## What kind of roles can I get?

- › Available roles include both back-of-house (chambermaid, portering, commis waiter), food and beverage (bar, restaurant work), and front-of-house positions (guest relations, reception).
- › For students with relevant experience, roles in administration, marketing, and human resources may also be available, at the discretion of the relevant career placement employer.
- › Promotion in your role is dependent on the career placement employer.

12



## What will my journey look like?

- › Your commute can range from 10 minutes to 60 minutes, depending on your location. The UK and Canada have very integrated and regular travel options, so the average commute time is 30-45 minutes.

13



## Is there additional financial support?

- › No additional financial support is provided. It is essential to budget well and understand the cost of living in the UK and Canada.

14



## Is accommodation included?

- › Some career placement employers may offer accommodation, but most do not. The school offers convenient homestay and student accommodation options for the duration of the course, but once students leave the course and start their employment, they are responsible for their own accommodation.

15



## Are there opportunities for long-term progression?

- › Yes, we cater to post-study and work visa holders, who are in the UK and Canada and looking for long-term progression. Employers during your career placement may choose to promote you or offer you extended employment terms.

