



# Price List 2024



 UK

 Canada

 France

 South Africa

 Cyprus

# Contents

Welcome to the world of Bayswater Education. Our premium brands offer quality international education experiences in 5 amazing countries, the UK, Canada, South Africa, Cyprus and France.

## UK

London	4
Liverpool	6
Brighton	8
Bournemouth	10

## Canada

Vancouver	12
Toronto	14
Calgary	16

## South Africa

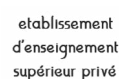
Cape Town	18
-----------	----

## France

Paris	20
-------	----

## Cyprus

English in Cyprus (Limassol)	22
------------------------------	----



# Our Promise

We're passionate about growing communities of global thinkers and explorers, at home and abroad - whatever their story. We set up Bayswater because we want people from every walk of life to get a buzz from discovering new cultures, exploring new flavours, and learning what's out there. We think of them as global spirits, like ourselves.



## A home away from home

We're here to support you, at every step of your journey.

## More power to you

We're a student powered community, listening to you and celebrating your efforts and achievements.

## Your success is ours

It's our job to meet your needs and give you what you need to succeed. Your goals are ours too.

## Inspiring global spirits

Why we do what we do - to empower all young people to create the life they want to live.



# London

## Course Fees

### General English and IELTS Preparation

Prices and lessons are per week

Course	Lessons	1 to 11	12 to 23	24+
Standard	20	£345	£310	£270
Intensive	25	£385	£345	£300
Super Intensive	30	£430	£385	£340

IELTS Preparation available in Standard 20 lessons. Can be combined with 5 or 10 General English lessons as part of an Intensive or Super Intensive Course  
Minimum level for IELTS preparation: B1

English Plus Add-ons	Lessons	Price	Notes
One to One lessons	5	£400	Custom packages available

Family Options	Lessons	1+	Extra adult/child	Course dates
Young Learner (age 12+)	20	£345	£325	08 Jul - 09 Aug
Parent & Child (age 12+)	20	£650		

Young Learners must be accommodated with a parent/guardian

### Cambridge Exam Preparation

Prices are per course

Course	Lessons	8 week	10 week	Dates
Standard	20	£2,760	£3,450	See website
Intensive	25	£3,080	£3,850	
Super Intensive	30	£3,440	£4,300	

First (FCE) - min level B2 (level 6)  
Advanced (CAE) - min level C1 (level 8)  
Cambridge Preparation Available in Standard 20 lessons. Can be combined with 5 or 10 General English lessons as part of an Intensive or Super Intensive Course

### Professional

Prices are per course - Upper Intermediate (B2) English level required

Professional Certificate Suite	Duration	Price	Start Dates
Digital Marketing	4 weeks	£1,995	See website
Luxury Brand Management	4 weeks	£1,895	
International Business Management	4 weeks	£1,895	

### Premium Package\*

Professional and English	8 weeks	12 weeks	24 weeks	36 weeks
Any UK cities, any mix of professional and English courses**	£3,155	£4,315	£7,625	£10,895
Extra week	£395	£366	£320	£305

\*Includes registration fee and material fees  
\*\*Courses to be studied one course at a time, not simultaneously  
\*\*Professional Courses available in London only



▲ 167 Queensway,  
London W2 4SB

### Quick Facts

#### All Courses Include

- Online placement test
- Welcome activity
- Organised social programme
- Student handbook
- End of course certificate
- WiFi

#### Professional Courses

- Minimum age: 18
- Class size: Max 16, Average 10

#### English Courses

- Minimum age: 16
- Minimum stay: 1 week
- Courses start: Every Monday
- Class size: Max 15, Average 10

#### English Lessons

- 1 lesson: 45 min
- 20 lessons: 15 hrs/week
- 25 lessons: 18.75 hrs/week
- 30 lessons: 22.5 hrs/week

Course schedule may take place in the morning or afternoon

#### Centre Closure Dates

- 1 Jan 26 Aug
- 29 Mar 23 Dec 2024 to
- 1 Apr 3 Jan 2025
- 6, 27 May

**15**  
Classrooms

**400**  
Capacity

**15**  
Max class size

**IELTS**  
Test Centre



# London

## Accommodation, Transfers and Other Fees

### Accommodation Prices are per week

Homestay Age 16+	Zone	Time	Bed & Breakfast	Half Board
Single Shared Bathroom	4-5	45 - 60 min	£230	£260
Twin* Shared Bathroom	4-5	45 - 60 min	£220	£250
Single Shared Bathroom	3	30 - 55 min	£245	£280
Twin* Shared Bathroom	3	30 - 55 min	£235	£265
Single Shared Bathroom	2	20 - 55 min	£270	£295
Twin* Shared Bathroom	2	20 - 55 min	£255	£290

<b>Summer Supplement</b> 9 Jun - 31 Aug £30 p/w	<b>Christmas Supplement</b> 22 Dec - 28 Dec £50	<b>Private Bathroom (Only Zone 4/5)</b> En-suite or Exclusive use £45 p/w
<b>Dietary Supplement</b> £25 - 45 p/w	<b>Under 18 Supplement Year Round</b> (Valid for arrivals from 12 Feb 2024) £20 p/w	

\*Twin rooms are only available for two people travelling together  
Students in a single room may be housed in the same homestay as other students  
Students under 18 in a homestay must book at least Half Board, a return transfer and provide a guardian consent form  
Extra nights: billed on a pro rata basis

Residences Age 18+	Zone	Time	Per week	Dates
Chapter Portobello Studio Room En-suite	2	20 min	£395	Year round
Premium Single Room En-suite	2	30 - 45 min	£425 - 550	Year round

### Other Charges

Prices per booking	
Registration Fee	£90
Accommodation Booking Fee	£50
Bank Charges	£12
Exam Fee - IELTS*	£240
Exam fee - FCE*	£212
Exam fee - CAE*	£215
Professional Courses Materials Fee	£24
YMS Internship Fee**	£1000
Prices per week	
Materials Fee***	£6
Insurance*	£8

\* Optional Charges  
\*\*Applicable for YMS Internship students only  
\*\*\*Applies to all language courses

All prices are subject to change

### Transfers

Airport	One Way
Heathrow	£130
London City	£130
Luton	£175
Gatwick	£175
Stansted	£175
St Pancras	£95

Transfer prices can include up to 2 people per vehicle - same flight & address



▲ Chapter Portobello,  
1 Alderson St, London W10 5JY

### Quick Facts

#### Room Types

Single 🛏

Twin 🛏🛏

Studio 🛏🛏

#### Board Types

**Bed & breakfast:** Room and breakfast provided

**Half Board:** Room, breakfast and evening meal provided

**Self-catering:** Room provided without meals

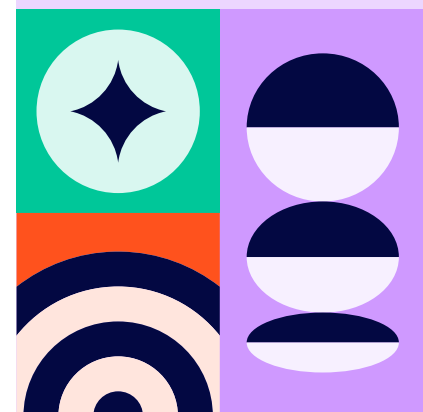
Residences are self-catering

#### Bathroom Types

**En-suite:** Ensuite OR exclusive use of a bathroom

**Shared Bathroom:** Bathroom shared with other residents and/or host family

**Arrival and departure day:** Sunday to Saturday



# Liverpool

## Course Fees

### General English and IELTS Preparation

Prices and lessons are per week

Course	Lessons	1 to 11	12 to 23	24+
Standard	20	£265	£245	£225
Intensive	25	£290	£265	£240
Super Intensive	30	£330	£315	£285

**IELTS Preparation:** Available as a module booked part of an Intensive or Super Intensive Course. A combination of 20 or 25 General English lessons + 5 dedicated IELTS lessons  
 Minimum level for IELTS Preparation: B1

English Plus Add-ons	Lessons	Price	Notes
One to One lessons	5	£350	Custom packages available

### Premium Package\*

Professional and English	8 weeks	12 weeks	24 weeks	36 weeks
Any UK cities, any mix of professional and English courses**	£3,155	£4,315	£7,625	£10,895
Extra week	£395	£366	£320	£305

\*Includes registration fee and material fees  
 \*\*Courses to be studied one course at a time, not simultaneously  
 \*\*Professional Courses available in London only



▲ 42 Whitechapel,  
 Liverpool L1 6DZ

### Quick Facts

- All Courses Include**
- Online placement test
  - Welcome activity
  - Organised social programme
  - Student handbook
  - End of course certificate
  - WiFi

**Professional Courses**  
 Minimum age: 18  
 Class size: Max 16, Average 10

**English Courses**  
 Minimum age: 16  
 Minimum stay: 1 week  
 Courses start: Every Monday  
 Class size: Max 15, Average 10

**English Lessons**

1 lesson:	45 min
20 lessons:	15 hrs/week
25 lessons:	18.75 hrs/week
30 lessons:	22.5 hrs/week

Course schedule may take place in the morning or afternoon

**Centre Closure Dates**

1 Jan	26 Aug
29 Mar	23 Dec 2024 to
1 Apr	3 Jan 2025
6, 27 May	

12

Classrooms

250

Capacity

15

Max class size

IELTS

Available



bayswater.ac/liverpool

E-mail us  
 partners@bayswater.ac  
 Call us  
 +44 (0) 151 707 8905  
 Visit us  
 42 Whitechapel, Liverpool L1 6DZ

**Agent Enquiries**  
 Our Agents are appointed experts in your country and can give you specialist advice on our courses, as well as any visa requirements. Contact us for an Agent in your area.  
 For agent sales enquiries please contact us at partners@bayswater.ac

# Liverpool

## Accommodation, Transfers and Other Fees

### Accommodation Prices are per week

Homestay Age 16+	Time	Bed & Breakfast	Half Board
Single Shared Bathroom	30 - 60 min 🚗	£165	£190
Twin Shared Bathroom*	30 - 60 min 🚗	£155	£180

<b>Summer Supplement</b> 9 Jun - 31 Aug £30 p/w	<b>Christmas Supplement</b> 22 Dec - 28 Dec £50	<b>Private Bathroom</b> En-suite or Exclusive use £45 p/w
----------------------------------------------------	----------------------------------------------------	--------------------------------------------------------------

<b>Dietary Supplements</b> £25 - 45 p/w	<b>Under 18 Supplement Year Round</b> (Valid for arrivals from 12 Feb 2024) £20 p/w
--------------------------------------------	----------------------------------------------------------------------------------------

\*Twin rooms are only available for two people travelling together  
 Students in a single room may be housed in the same homestay as other students  
 Students under 18 in a homestay must book at least Half Board, a return transfer and provide a guardian consent form  
 Extra nights: billed on a pro rata basis

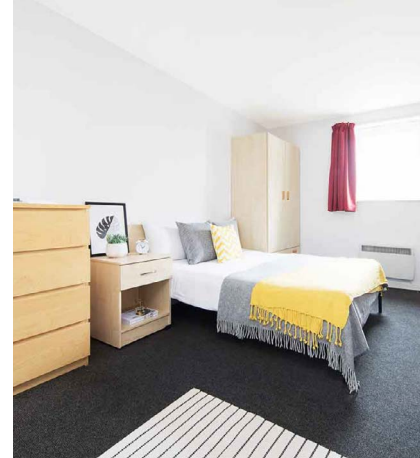
Residences Age 18+	Time	Per week	Dates
Atlantic Point Single Room En-suite	15 min 🚗	£155	Year round
The Lantern Single Room Ensuite	10 min 🚗	£185	Year round
Calico Single Room Ensuite	16 min 🚗	£190	Year round
Benson Yard Single Room Ensuite	11 min 🚗	£195	Year round

### Other Charges

Prices per booking	
Registration Fee	£90
Accommodation Booking Fee	£50
Bank Charges	£12
Exam Fee - IELTS*	£220
YMS Internship Fee**	£1000
Prices per week	
Materials Fee***	£6
Insurance*	£8

\* Optional Charges  
 \*\*Applicable for YMS Internship students only  
 \*\*\*Applies to all language courses

All prices are subject to change



▲ Atlantic Point, Naylor St, Liverpool L3 6LS

### Quick Facts

#### Room Types

- Single 🛏
- Twin 🛏🛏
- Studio 🛏🛏

#### Board Types

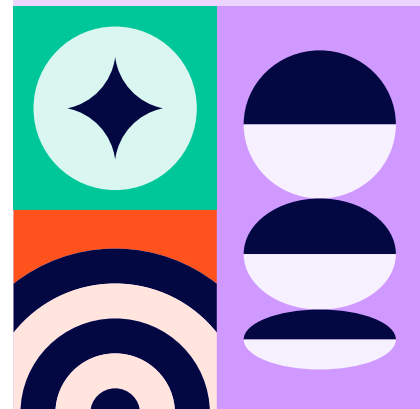
- Bed & breakfast:** Room and breakfast provided
- Half Board:** Room, breakfast and evening meal provided
- Self-catering:** Room provided without meals

Residences are self-catering

#### Bathroom Types

- En-suite:** Ensuite OR exclusive use of a bathroom
- Shared Bathroom:** Bathroom shared with other residents and/or host family

Arrival and departure day:  
 Sunday to Saturday



# Brighton

## Course Fees

### General English and IELTS Preparation Prices and lessons are per week

Course	Lessons	1 to 11	12 to 23	24+
Standard	20	£320	£280	£245
Intensive	25	£360	£315	£285
Super Intensive	30	£410	£365	£315

**IELTS Preparation:** Available as a module booked part of an Intensive or Super Intensive Course. A combination of 20 or 25 General English lessons + 5 dedicated IELTS lessons. Core IELTS subject to demand and availability.

Minimum level for IELTS Preparation: B1

English Plus Add-ons	Lessons	Price	Notes
One to One lessons	5	£400	Custom packages available

Family Options	Lessons	1+	Extra adult/child	Course Dates
Young Learner (age 12+)	20	£320	£295	24 Jun - 09 Aug
Day Camp (age 12 -17)	20	£445		

Individual students aged 12 -15 must be accommodated with a parent/guardian  
Parents can study with Bayswater as per Price List, please note timetables will differ

### Cambridge Exam Preparation Prices are per course

Course	Lessons	4 week	10 week	Dates
Standard	20	£1,280	£3,200	
Intensive	25	£1,440	£3,600	See website
Super Intensive	30	£1,640	£4,100	

First (FCE) - min level B2 (level 6)

Advanced (CAE) - min level C1 (level 8)

Cambridge Preparation Available in Standard 20 lessons. Can be combined with 5 or 10 General English lessons as part of an Intensive or Super Intensive Course

### Premium Package\*

Professional and English	8 weeks	12 weeks	24 weeks	36 weeks
Any UK cities, any mix of professional and English courses**	£3,155	£4,315	£7,625	£10,895
Extra week	£395	£366	£320	£305

\*Includes registration fee and material fees

\*\*Courses to be studied one course at a time, not simultaneously

\*\*Professional Courses available in London only



▲ 61 Western Rd, Brighton  
Hove BN3 1JD

### Quick Facts

#### All Courses Include

- Online placement test
- Welcome activity
- Organised social programme
- Student handbook
- End of course certificate
- WiFi

#### Professional Courses

- Minimum age: 18
- Class size: Max 16, Average 10

#### English Courses

- Minimum age: 16
- Minimum stay: 1 week
- Courses start: Every Monday
- Class size: Max 15, Average 10

#### English Lessons

- 1 lesson: 45 min
- 20 lessons: 15 hrs/week
- 25 lessons: 18.75 hrs/week
- 30 lessons: 22.5 hrs/week

#### Family Options

- Parent & Child, Young Learner (Mon - Fri)
- Tuition only

- Day Camp (Mon - Fri)
- Tuition, lunch and half day activities

Course schedule may take place in the morning or afternoon

#### Centre Closure Dates

- 1 Jan 26 Aug
- 29 Mar 23 Dec 2024 to
- 1 Apr 3 Jan 2025
- 6, 27 May





# Brighton

## Accommodation, Transfers and Other Fees

### Accommodation Prices are per week

Homestay Age 16+		Time	Bed & Breakfast	Half Board
Single Shared Bathroom		30 - 60 min	£155	£200
Twin Shared Bathroom*		30 - 60 min	£135	£180
<b>Summer Supplement</b> 9 Jun - 31 Aug £30 p/w	<b>Christmas Supplement</b> 22 Dec - 28 Dec £50	<b>Dietary Supplements</b> £25 - 45 p/w		
<b>Private Bathroom</b> En-suite or Exclusive use £75 p/w	<b>Under 18 Supplement Year Round</b> (Valid for arrivals from 12 Feb 2024) £20 p/w			

\*Twin rooms are only available for two people travelling together  
 Students in a single room may be housed in the same homestay as other students  
 Students under 18 in a homestay must book a return transfer and provide a guardian consent form

Residences Age 18+	Time	1-25 weeks	26+ weeks	Dates
Britannia Study Hotel Single En-suite	5 - 10 min	£350	£340	Year round
North Laine Summer Residence	30 min 15 min	£295		29 Jun - 10 Aug

### Other Charges

Prices per booking	
Registration Fee	£90
Accommodation Booking Fee	£50
Bank Charges	£12
Exam Fee - IELTS*	£240
Exam fee - FCE*	£212
Exam fee - CAE*	£215
YMS Internship Fee**	£1000
Prices per week	
Materials Fee***	£6
Insurance*	£8

\* Optional Charges  
 \*\*Applicable for YMS Internship students only  
 \*\*\*Applies to all language courses

All prices are subject to change



▲ Britannia Study Hotel, 150 Western Road, Brighton, BN1 2DA

### Quick Facts

#### Room Types

- Single
- Twin
- Studio

#### Board Types

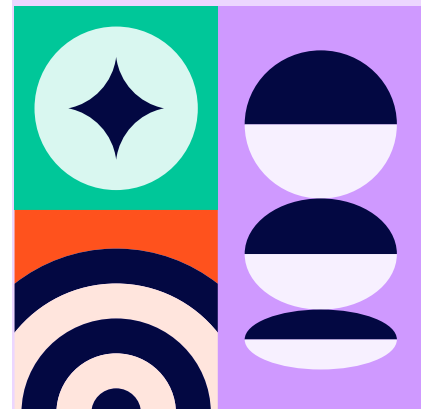
- Bed & breakfast:** Room and breakfast provided
- Half Board:** Room, breakfast and evening meal provided
- Self-catering:** Room provided without meals

Residences are self-catering

#### Bathroom Types

- En-suite:** Ensuite OR exclusive use of a bathroom
- Shared Bathroom:** Bathroom shared with other residents and/or host family

Arrival and departure day:  
 Sunday to Saturday



# Bournemouth

## Course Fees

### General English and IELTS Preparation Prices and lessons are per week

Course	Lessons	1 to 11	12 to 23	24+
Standard	20	£265	£245	£225
Intensive	25	£290	£265	£240
Super Intensive	30	£330	£315	£285

IELTS Preparation available in Standard 20 lessons. Can be combined with General English as part of an Intensive or Super Intensive Course  
Minimum level for IELTS Preparation: B1

English Plus Add-ons	Lessons	Price	Notes
One to One lessons	5	£350	Custom packages available

Family Options	Lessons	1+	Extra adult/child	Course Dates
Young Learner (age 12+)	20	£265	£255	24 Jun - 16 Aug
Day Camp (age 12 -17)	20	£425		

Young learners must be accommodated with a parent/guardian

### Premium Package\*

Professional and English	8 weeks	12 weeks	24 weeks	36 weeks
Any UK cities, any mix of professional and English courses**	£3,155	£4,315	£7,625	£10,895
Extra week	£395	£366	£320	£305

\*Includes registration fee and material fees

\*\*Courses to be studied one course at a time, not simultaneously

\*\*Professional Courses available in London only



▲ St Peters Quarter, Bournemouth, BH1 2AD

### Quick Facts

#### All Courses Include

- Online placement test
- Welcome activity
- Organised social programme
- Student handbook
- End of course certificate
- WiFi

#### Professional Courses

- Minimum age: 18
- Class size: Max 16, Average 10

#### English Courses

- Minimum age: 16
- Minimum stay: 1 week
- Courses start: Every Monday
- Class size: Max 15, Average 10

#### English Lessons

- 1 lesson: 45 min
- 20 lessons: 15 hrs/week
- 25 lessons: 19 hrs/week
- 30 lessons: 23 hrs/week

#### Family Options

- Parent & Child, Young Learner (Mon - Fri)
- Tuition only
- Day Camp (Mon - Fri)
- Tuition, lunch and half day activities

Course schedule may take place in the morning or afternoon

#### Centre Closure Dates

- 1 Jan 26 Aug
- 29 Mar 23 Dec 2024 to
- 1 Apr 3 Jan 2025
- 6, 27 May



# Bournemouth

## Accommodation, Transfers and Other Fees

### Accommodation Prices are per week

Homestay Age 16+		Bed & Breakfast	Half Board
Single Shared Bathroom		£140	£165
Twin Shared Bathroom*		£130	£155
<b>Summer Supplement</b> 9 Jun - 31 Aug £30 p/w	<b>Christmas Supplement</b> 22 Dec - 28 Dec £50	<b>Private bathroom</b> En-suite or exclusive use £45 p/w	
<b>Dietary Supplements</b> £25 - 45 p/w	<b>Under 18 Supplement Year Round</b> (Valid for arrivals from 12 Feb 2024) £20 p/w		

\*Twin rooms are only available for two people travelling together  
Students in a single room may be housed in the same homestay as other students  
Students under 18 in a homestay must book at least Half Board, a return transfer and provide a guardian consent form  
Extra nights: billed on a pro rata basis

Residences Age 16+	Time	Per week	Dates
Lansdowne Point En-suite* + Half Board	15 min 🚶 - 8 min 🚗	£410	23 June to 18 Aug
<b>Full Board Supplement</b> (packed lunch) 16-17 only £40 p/w	<b>Dietary Supplements</b> £25 - 45 p/w		

Residences Age 18+			
Lansdowne Point Single En-suite**	15 min 🚶 - 8 min 🚗	£275	Year-round
Piccadilly Hotel Single En-suite	7 min 🚶 - 5 min 🚗	£250	03 Sep 2023 - 20 May 2024
Piccadilly Hotel Twin*** En-suite	7 min 🚶 - 5 min 🚗	£160	

\* Includes breakfast and evening meals, cleaning every 2 weeks and staff member support and supervision on site  
\*\* Includes linen, bedding and kitchen pack  
\*\*\* Twin rooms are only available for two people travelling together  
Students under 18 in a residence must also book a return transfer and provide a guardian consent form

### Other Charges

Prices per booking	
Registration Fee	£90
Accommodation Booking Fee	£50
Bank Charges	£12
Exam Fee - IELTS*	£220
YMS Internship Fee**	£1000
Prices per week	
Materials Fee***	£6
Insurance*	£8

\* Optional Charges  
\*\* Applicable for YMS Internship students only  
\*\*\* Applies to all language courses

All prices are subject to change



▲ 51-65 Holdenhurst Rd,  
Bournemouth BH8 8GN

### Quick Facts

#### Room Types

Single 🛏

Twin 🛏🛏

#### Board Types

**Bed & breakfast:** Room and breakfast provided

**Half Board:** Room, breakfast and evening meal provided

**Self-catering:** Room provided without meals

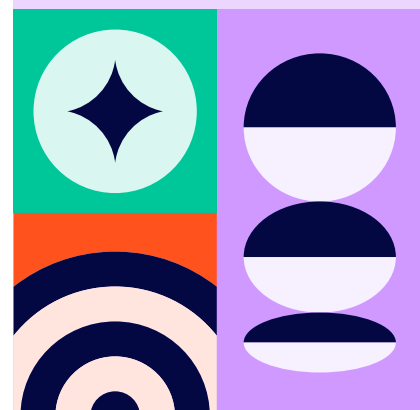
All residences are self-catered unless otherwise stated

#### Bathroom Types

**En-suite:** Bedroom with adjoining private bathroom

**Shared Bathroom:** Bathroom shared with other residents and/or host family

Arrival and departure day:  
Sunday to Saturday



# Vancouver

## Course Fees

### General English, Business and IELTS Preparation Prices and lessons are per week

Course	Lessons	1 to 11	12 to 23	24+
Standard	20	\$370	\$350	\$315
Intensive	25	\$420	\$405	\$370
Super Intensive	30	\$465	\$450	\$415

IELTS Preparation and Business English: Available in Intensive or Super Intensive  
 A combination of 20 or 25 General English lessons + 5 dedicated IELTS/ or Business English lessons  
 Minimum level for IELTS Preparation: B1 or students in level 4  
 Minimum level for Business English: B2

English Plus Add-ons	Lessons	Price	Notes
One to One lessons	5	\$500	Custom packages available

University Preparation	Lessons	12 to 23	24+
University Pathway Program	30	\$450	\$415

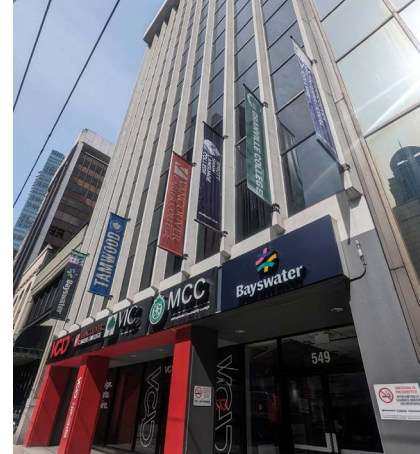
### Professional Prices are per course

Professional Certificate Suite	Duration	Price	Start Dates
International Business Management	4 weeks	\$2,250	2 Jan, 25 Mar, 17 Jun, 9 Sep
Digital Marketing	4 weeks	\$2,250	29 Jan, 22 Apr, 15 Jul, 7 Oct
Project Management	4 weeks	\$2,250	26 Feb, 21 May, 12 Aug, 4 Nov

### Premium Package\*

Professional and English	8 weeks	12 weeks	24 weeks	36 weeks	48 weeks
Any Canadian cities, any mix of professional and English courses**	\$3,695	\$5,460	\$10,455	\$14,365	\$18,645
Extra week	\$460	\$455	\$435	\$399	\$385

\*Includes registration fee and material fees  
 \*\*Courses to be studied one course at a time, not simultaneously  
 \*\*Professional Courses available in Vancouver & Toronto only



▲ 549 Howe Street, 9th Floor  
 Vancouver BC Canada V6C 2C2

### Quick Facts

#### All Courses Include

- Online placement test
- Welcome activity
- Organised social programme
- Student handbook
- End of course certificate
- WiFi
- Bayswater student portal
- Solo-study online content

#### Professional Courses

Minimum age: 18  
 Class size: Max 16, Average 10

#### English Courses

Minimum age: 16  
 Minimum stay: 1 week  
 Courses start: Every Monday  
 Class size: Max 15, Average 10

#### English Lessons

1 lesson: 45 min  
 20 lessons: 15 hrs/week  
 25 lessons: 18.75 hrs/week  
 30 lessons: 22.5 hrs/week

Course Schedule is subject to change and availability

#### Centre Closure Dates

1 Jan            2 Sep  
 19 Feb        2, 14 Oct  
 29 Mar        11 Nov  
 20 May        23 to 27 Dec  
 1 Jul           1 Jan 2025  
 5 Aug



# Vancouver

## Accommodation, Transfers and Other Fees

### Accommodation Prices are per week

Homestay Age 16+		Full Board	Half Board
Single Room Shared Bathroom		\$315	\$290
<b>Summer Supplement</b> 09 Jun - 31 Aug \$40	<b>Minors Fee</b> Students Under 18 years old \$50 p/w		
<b>Extra night</b> \$55	<b>Dietary Supplement</b> may incur charges		

Students in a single room may be housed in the same homestay as other students  
Students under 18 in a homestay must book at least half-board, a return transfer and provide a guardian consent form

Silverstone Age 19+	5-25 weeks	26 weeks +
Shared Bedroom without ensuite	\$325	\$320
Shared bedroom with Ensuite	\$350	\$345
Private room without ensuite	\$450	\$445
Private room with Ensuite	\$475	\$470

Minimum stay is 5 weeks. Only available to students 19 and older.  
Includes bedding, kitchen supplies, utilities, WiFi, in-suite laundry, lounge and gym, weekly cleaning

GEC Pearson, Burnaby Age 19+	17-25 weeks	26 weeks +
Economy Shared Bedroom	\$385	\$339
Shared Bedroom	\$395	\$348
Premium Shared Bedroom	\$537	\$490
Sectioned Bedroom	\$560	\$514
Private Bedroom	\$467	\$420

**Security Deposit** Non-refundable  
2 week's rent

**Accommodation bookign fee / Placement fee**  
\$275

**Amenities Fee** Non-refundable  
Silverstone \$85  
GEC Pearson and Burnaby \$131.25

Minimum stay is 17 weeks. Only available to students 19 years old and older  
Includes bedding, kitchen supplies, utilities, WiFi, in-suite laundry, lounge and gym  
Semester weekly rates apply to bookings longer than 16 weeks  
Students must purchase Bayswater Insurance if living in Bayswater Student residences in Canada

### Other Charges

Prices per booking	
Registration Fee	\$185
Accommodation Booking Fee	\$275
Bank Charges	\$35
Exam Fee - Cambridge & IELTS*	\$350
Custodianship Document	\$150
Professional Courses Materials Fee	\$40
Prices per week	
Materials Fee**	\$10
Insurance***	\$25

\* Optional Charges  
\*\* Applies to all language courses  
\*\*\* Students must purchase Bayswater Insurance if living in Bayswater Student residences in Canada

All prices are subject to change

### Transfers

Airport	One Way
Vancouver International	\$150

Transfer prices can include up to 2 people per vehicle - same flight & address



▲ GEC - Student Residences - Vancouver and Burnaby, BC

### Quick Facts

#### Room Types

- Single 🛏
- Twin 🛏🛏

#### Board Types

**Full Board:** 3 meals per day (breakfast, lunch and dinner). 21 meals per week

**Half Board:** 2 meals per day (breakfast and dinner). 14 meals per week

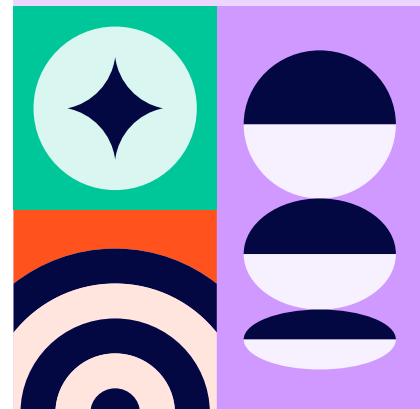
**Self-catering:** Room provided without meals

Residences are self-catering

#### Bathroom Types

**Shared Bathroom:** Bathroom shared with other residents and/or host family

Arrival and departure day:  
Sunday to Saturday



# Toronto

## Course Fees

### General English, Business and IELTS Preparation Prices and lessons are per week

Course	Lessons	1 to 11	12 to 23	24+
Standard	20	\$370	\$350	\$315
Intensive	25	\$420	\$405	\$370
Super Intensive	30	\$465	\$450	\$415

IELTS Preparation & Business English: Available in Standard 20 lessons  
 Can be combined with General English as part of an Intensive or Super Intensive Course  
 Minimum level for IELTS Preparation: B1 or students in level 4  
 Minimum level for Business English: B2

English Plus Add-ons	Lessons	Price	Notes
One to One lessons	5	\$500	Custom packages available

University Preparation	Lessons	12 to 23	24+
University Pathway Program	30	\$450	\$415

### Cambridge Exam Preparation Prices are per course

Course	Lessons	8 weeks	11 weeks	12 weeks	Dates
Intensive	25	\$3,360	\$4,620	\$4,860	See website
Super Intensive	30	\$3,720	\$5,115	\$5,400	

First (FCE) - min level B2 (level 6)  
 Advanced (CAE) - min level C1 (level 8)  
 A combination of 20 Cambridge exam preparation lessons + 5/10 General English lessons.

### Professional Upper Intermediate (B2) English level required

Professional Certification	Duration	20 lessons	Start Dates
International Business Management	4 weeks	\$2,250	2 Jan, 25 Mar, 17 Jun, 9 Sep
Digital Marketing	4 weeks	\$2,250	29 Jan, 22 Apr, 15 Jul, 7 Oct
Project Management	4 weeks	\$2,250	26 Feb, 21 May, 12 Aug, 4 Nov

### Premium Package\*

Professional and English	8 weeks	12 weeks	24 weeks	36 weeks	48 weeks
Any Canadian cities, any mix of professional and English courses**	\$3,695	\$5,460	\$10,455	\$14,365	\$18,645
Extra week	\$460	\$455	\$435	\$399	\$385

\*Includes registration fee and material fees  
 \*\*Courses to be studied one course at a time, not simultaneously  
 \*\*Professional Courses available in Vancouver & Toronto only



▲ 5 Park Home Ave 6th floor, North York, Toronto ON M2N 6L4

### Quick Facts

#### All Courses Include

- Online placement test
- Welcome activity
- Organised social programme
- Student handbook
- End of course certificate
- WiFi
- Bayswater student portal
- Solo-study online content

#### Professional Courses

Minimum age: 18  
 Class size: Max 16, Average 10

#### English Courses

Minimum age: 16  
 Minimum stay: 1 week  
 Courses start: Every Monday  
 Class size: Max 15, Average 11

#### English Lessons

1 lesson: 45 min  
 20 lessons: 15 hrs/week  
 25 lessons: 18.75 hrs/week  
 30 lessons: 22.5 hrs/week

Course Schedule is subject to change and availability

#### Centre Closure Dates

1 Jan 5 Aug  
 19 Feb 2 Sep  
 29 Mar 14 Oct  
 20 May 23 to 27 Dec  
 1 Jul 1 Jan 2025



# Toronto

## Accommodation, Transfers and Other Fees

### Accommodation Prices are per week

Homestay Age 16+		Full board	Half Board
Single Room Shared Bathroom		\$320	\$290
Twin* Room Shared Bathroom		\$300	\$275
<b>Summer Supplement</b> 9 Jun - 31 Aug \$40 p/w	<b>Minors Fee</b> Students Under 18 years old \$50 p/w	<b>Dietary Supplements</b> \$30 - 80	

\*Twin rooms are only available for two people travelling together  
Students in a single room may be housed in the same homestay as other students  
Students under 18 in a homestay must book, a return transfer and provide a custodianship consent form  
Extra nights: billed on a pro rata basis

Seneca Newnham Residence Age 18+	Dates	Time	Summer only
Private room / shared bathroom	28 Apr to 31 Aug	35 min 🚗	\$400

Casa Toronto Residences Age 18+	Time	Per week
Shared room* / shared bathroom	25 min 🚗	\$325
Private room / shared bathroom	25 min 🚗	\$425

\*Shared rooms are only available for two people travelling together  
Placement fee: \$250 | Bookings from Saturday to Saturday | Minimum stay 4 weeks

Casa Dream House Age 18+	Time	Per week
Private room / shared bathroom	35 min 🚗	\$425
Private room / semi-private bathroom	35 min 🚗	\$475
Private room / private bathroom	35 min 🚗	\$525

Placement fee: \$250 | Bookings from Saturday to Saturday | Minimum stay 4 weeks

Casa Dream Apartments Age 18+	Time	Per week
Dream Apartments private room / shared bathroom	35 min 🚗	\$425
Dream Apartments private room / semi-private bathroom	35 min 🚗	\$475

Placement fee: \$250 | Bookings from Saturday to Saturday | Minimum stay 4 weeks

### Other Charges

Prices per booking	
Registration Fee	\$185
Accommodation Booking Fee	\$265
Bank Charges	\$35
Exam Fee - Cambridge & IELTS*	\$395
Custodianship Document	\$150
Professional Courses Materials Fee	\$40
Prices per week	
Materials Fee**	\$10
Insurance***	\$25

\* Optional Charges

\*\* Applies to all language courses

\*\*\* Students must purchase Bayswater Insurance if living in Bayswater Student residences in Canada

All prices are subject to change

### Transfers

Airport	One Way
Pearson International	\$150

Transfer prices can include up to 2 people per vehicle - same flight & address



▲ Harrington Residence  
561 Sherbourne St Unit 2703

### Quick Facts

#### Room Types

Single 🛏

Twin 🛏🛏

#### Board Types

**Full Board:** 3 meals per day (breakfast, lunch and dinner). 21 meals per week

**Half Board:** 2 meals per day (breakfast and dinner). 14 meals per week

**Self-catering:** Room provided without meals

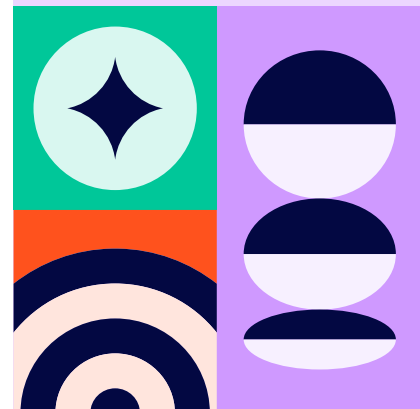
Residences are self-catering

#### Bathroom Types

**En-suite:** Bedroom with adjoining private bathroom

**Shared Bathroom:** Bathroom shared with other residents and/or host family

**Arrival and departure day:** Sunday to Saturday



# Calgary

## Course Fees

### General English, Business and IELTS Preparation Prices and lessons are per week

Course	Lessons	1 to 11	12 to 23	24+
Standard	20	\$370	\$350	\$315
Intensive	25	\$420	\$405	\$370
Super Intensive	30	\$465	\$450	\$415

IELTS Preparation & Business English: Available in Standard 20 lessons  
 Can be combined with General English as part of an Intensive or Super Intensive Course  
 Minimum level for IELTS Preparation: B1 or students in level 4  
 Minimum level for Business English: B2

English Plus Add-ons	Lessons	Price	Notes
One to One lessons	5	\$500	Custom packages available

University Preparation	Lessons	12 to 23	24+
University Pathway Program	30	\$450	\$415

### Premium Package\*

Professional and English	8 weeks	12 weeks	24 weeks	36 weeks	48 weeks
Any Canadian cities, any mix of professional and English courses**	\$3,695	\$5,460	\$10,455	\$14,365	\$18,645
Extra week	\$460	\$455	\$435	\$399	\$385

\*Includes registration fee and material fees  
 \*\*Courses to be studied one course at a time, not simultaneously  
 \*\*Professional Courses available in Vancouver & Toronto only



▲ 840 6 Ave SW,  
Calgary, AB T2P 3E5

### Quick Facts

#### All Courses Include

- Online placement test
- Welcome activity
- Organised social programme
- Student handbook
- End of course certificate
- WiFi
- Bayswater student portal
- Solo-study online content

#### Professional Courses

Minimum age: 18  
 Class size: Max 16, Average 10

#### English Courses

Minimum age: 16  
 Minimum stay: 1 week  
 Courses start: Every Monday  
 Class size: Max 15, Average 10

#### English Lessons

1 lesson: 45 min  
 20 lessons: 15 hrs/week  
 25 lessons: 18.75 hrs/week  
 30 lessons: 22.5 hrs/week

Morning and Afternoon Course schedule is subject to change and availability.

#### Centre Closure Dates

1 Jan	5 Aug
19 Feb	2 Sep
29 Mar	14 Oct
20 May	11 Nov
1 Jul	23 to 27 Dec
	1 Jan 2025





# Calgary

## Accommodation, Transfers and Other Fees

### Accommodation Prices are per week

Homestay Age 16+	Full-board	Half Board
Single Room Shared Bathroom	\$310	\$280

<b>Summer Supplement</b> 9 Jun - 31 Aug \$40 p/w	<b>Minors Fee</b> Students Under 18 years old \$50 p/w	<b>Dietary Supplements</b> \$50 p/w
-----------------------------------------------------	-----------------------------------------------------------	----------------------------------------

Students in a single room may be housed in the same homestay as other students  
 Students under 18 in a homestay must book a return transfer and provide a custodianship consent form  
 Extra nights: billed on a pro rata basis

The HUB Student Residence	Time	2 - 4 weeks	5 - 11 weeks	12 - 23 weeks	24+ weeks
Single Deluxe room, shared bathroom	20 min 🚗	\$385	\$330	\$300	\$275

<b>Refundable Security Deposit</b> \$200	<b>Bayswater Insurance (Guardme)</b> \$25/weekly*	<b>Laundry Card</b> \$2 per load
---------------------------------------------	------------------------------------------------------	-------------------------------------

Private room in a shared apartment  
 Free bedding, towels, kitchen supplies, utilities, Wifi, lounge, and gym  
 \*Required for all Hub Student Residents

### Other Charges

Prices per booking	
Registration Fee	\$185
Accommodation Booking Fee	\$210
Bank Charges	\$35
Exam Fee - IELTS*	\$375
Custodianship Document	\$150
Prices per week	
Materials Fee**	\$10
Insurance***	\$25

\* Optional Charges  
 \*\* Applies to all language courses  
 \*\*\* Students must purchase Bayswater Insurance if living in Bayswater Student residences in Canada

### Transfers

Airport	One Way
Calgary International	\$150

Transfer prices can include up to 2 people per vehicle - same flight & address



▲ The HUB Student Residence  
 2416 16 Ave NW,  
 Calgary AB T2M 5C7

### Quick Facts

#### Room Types

Single 🚗

#### Board Types

**Full Board:** 3 meals per day (breakfast, lunch and dinner). 21 meals per week

**Half Board:** 2 meals per day (breakfast and dinner). 14 meals per week

**Self-catering:** Room provided without meals

**Residences are self-catering**

#### Bathroom Types

**Shared Bathroom:** Bathroom shared with other residents and/or host family

**Arrival and departure day:** Sunday to Saturday

All prices are subject to change



bayswater.ac/calgary

E-mail us  
 partners@bayswater.ac

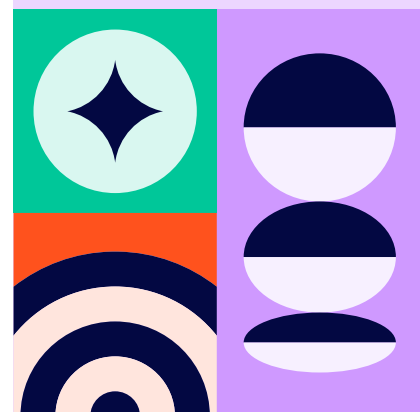
Call us  
 +1 403-265-6936

Visit us  
 840 6 Ave SW, Calgary, AB T2P 3E5

#### Agent Enquiries

Our Agents are appointed experts in your country and can give you specialist advice on our courses, as well as any visa requirements. Contact us for an Agent in your area.

For agent sales enquiries please contact us at  
 partners@bayswater.ac



# Cape Town

## Course Fees

### General English and IELTS Preparation Prices and lessons are per week

Course	Lessons	1 to 11	12 to 23	24+
Standard	20	€265	€230	€215
Intensive	25	€320	€275	€245
Super Intensive	30	€360	€320	€275

IELTS Preparation: Available in Intensive or Super Intensive.  
A combination of 20 or 25 General English lessons + 5 dedicated IELTS lessons  
Minimum level for IELTS Preparation: B1

English Plus Add-ons	Lessons	Price	Notes
One to One lessons	5	€350	Custom packages available

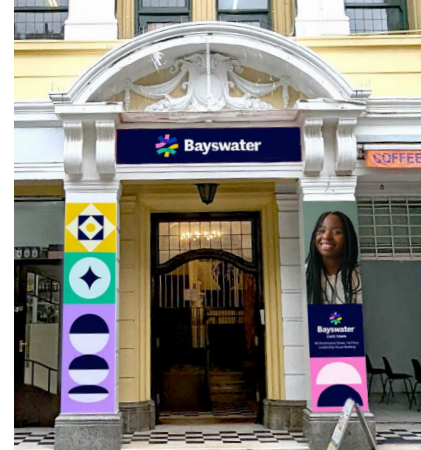
Family Options	Lessons	1+	Extra adult/child	Course Dates
Young Learner (age 8+)	20	€265	€250	All -year
Parent & Child (age 8+)	20	€500	€250	

Young Learners must be accommodated with a parent/guardian

### Cambridge Exam Preparation Prices are per course

Course	Lessons	10 weeks	12 weeks	Dates
Intensive	25	€3,200	€3,300	See website
Super Intensive	30	€3,600	€3,840	See website

First (FCE) - min level B2 (level 6)  
Advanced (CAE) - min level C1 (level 8)  
A combination of 20 Cambridge exam preparation lessons + 5/10 General English lessons



▲ Leadership House Building  
40 Shortmarket Street

### Quick Facts

#### All Courses Include

- Online placement test
- Welcome activity
- Organised social programme
- Student handbook
- End of course certificate
- WiFi

#### English Courses

- Minimum age: 16
- Minimum stay: 1 week
- Courses start: Every Monday
- Class size: Max 15, Average 10

#### English Lessons

- 1 lesson: 45 min
- 20 lessons: 15 hrs/week
- 25 lessons: 18.75 hrs/week
- 30 lessons: 22.5 hrs/week

#### Family Options

- Parent & Child, Young Learner (Mon - Fri)
- Tuition only

Course Schedule is subject to change and availability

#### Centre Closure Dates

- 1 Jan 9 Aug
- 21, 29 Mar 24 Sep
- 1 Apr 16 Dec
- 1 May 23 to 31 Dec
- 17 Jun 3 Jan 2025



# Cape Town

## Accommodation, Transfers and Other Fees

### Accommodation Prices are per week

Homestay Age 16+	Half Board
Single Room - Shared Bathroom	€195
Single Room - Private Bathroom	€245
Twin room - Shared Bathroom*	€145
Twin Room - Private Bathroom*	€195

#### Dietary Supplements

€30 - 55 p/w

Students in a single room may be housed in the same homestay as other students

Students under 18 in a homestay must book at least Half Board, a return transfer and provide a guardian consent form

\*Twin rooms are only available for two people travelling together

Residences Age 18+	Time	Time	
		01 Jan - 01 Oct	From 01 Oct
Neighbourgood East City, Single En-suite room with shared kitchen facilities*	5 min	€190	€320
		From 01 July	
Student at Home, Single studio apartment, En-suite	5 min	€180	-

#### Non-refundable lease fee

€70 (one-off)

All options self catering

\*Minimum stay 4 weeks

### Other Charges

Prices per booking	
Registration Fee	€75
Accommodation Booking Fee	€55
Bank Charges	€12
Exam Fee - IELTS*	€275
Exam fee - FCE*	€212
Exam fee - CAE*	€215
Prices per week	
Materials Fee**	€6

\* Optional Charges

\*\*Applies to all language courses

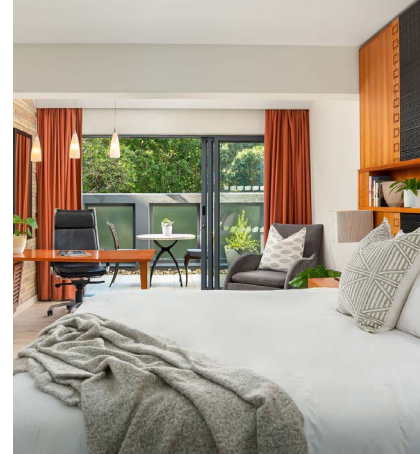
All prices are subject to change



### Transfers

Airport	One Way
Cape Town International	€55

Transfer prices can include up to 2 people per vehicle - same flight & address



▲ Neighbourgood, 60 Corporation Street, Cape Town

### Quick Facts

#### Room Types

Single

Twin

Single apartment

Shared apartment

#### Board Types

**Half Board:** Room, breakfast and one evening meals provided

**Self-catering:** Room provided without meals

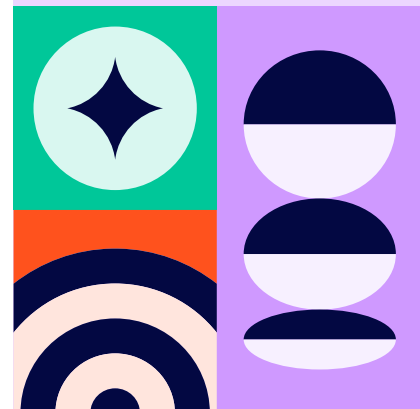
**Residences are self-catering**

#### Bathroom Types

**En-suite:** Bedroom with adjoining private bathroom

**Shared Bathroom:** Bathroom shared with other residents and/or host family

**Arrival and departure day:** Sunday to Saturday



#### Agent Enquiries

Our Agents are appointed experts in your country and can give you specialist advice on our courses, as well as any visa requirements. Contact us for an Agent in your area.

For agent sales enquiries please contact us at partners@bayswater.ac

# Paris

## Course Fees

### General French Prices and lessons are per week

Course	Lessons	1 to 11	12 to 23	24+
Standard	20	€335	€295	€250
Intensive	25	€380	€340	€295

French Plus Add-ons	Lessons	Price	Notes
One to One lessons	5	€350	Custom packages available

Family Options	Lessons	1 to 4	Extra adult/child	Course dates
Young Learner (age 10+)	20	€335	€315	1 Jul, 15 Jul, 12 Aug
Parent & Child (age 10+)	20	€630	€315	

Young Learners must be accommodated with a parent/guardian

### DELFDALF Exam Preparation Prices are per week

Course	Lessons	2 - 4 weeks	Dates
Intensive	25	€380	See website

Available as a module booked part of an Intensive Course. A combination of 20 General French lessons + 5 dedicated Exam lessons



▲ 13 Passage Dauphine,  
75006 Paris

### Quick Facts

#### All Courses Include

- Online placement test
- Welcome activity
- Organised social programme
- Student handbook
- End of course certificate
- WiFi

#### French Courses

- Minimum age: 16
- Minimum stay: 1 week
- Courses start: Every Monday
- Class size: Max 15, Average 10

#### French Lessons

- 1 lesson: 45 min
- 20 lessons: 15 hrs/week
- 25 lessons: 18.75 hrs/week

#### Family Options

- Parent & Child, Young Learner (Mon - Fri) Tuition only

Course schedule is subject to availability

#### Centre Closure Dates

- 1 Jan 15 Aug
- 1 Apr 1, 11 Nov
- 1, 8, 20 May 23 Dec to
- 14 Jul 3 Jan 2025

#### Beginner Course Dates

- 8 Jan 1, 15 Jul
- 12 Feb 12 Aug
- 25 Mar 9 Sep
- 22 Apr 14 Oct
- 3 Jun 18 Nov



# Paris

## Accommodation, Transfers and Other Fees

### Accommodation Prices are per week

Homestay Age 16+	Bed & Breakfast	Semi-Board	Half-board
Single shared bathroom	€295	€365	€390
Twin shared bathroom	€260	€320	€350

<b>Dietary Supplements</b> Bed & Breakfast - €55 Half board - €75	<b>Private Bathroom</b> Bed & Breakfast - €75 Half board - €75	<b>Extra night</b> Bed & Breakfast - €50 Half board - €65
-------------------------------------------------------------------------	----------------------------------------------------------------------	-----------------------------------------------------------------

Students in a single room may be housed in the same homestay as other students  
 Students under 18 in a homestay must book at least Half Board, a return transfer and provide a guardian consent form

Residences Age 18+	Time	1-4 weeks	5+	1-4 weeks	5+
		01 Jan - 01 April		From 01 April	
Noisy-Le-Grand, Studio, private bathroom	45 min	€350	€325	€350	€325
Bagnolet, Single room, private shower, private bathroom	40 min	€645	€510	€645	€535
Bagnolet, Twin room, private shower, private bathroom	40 min			€725	€575
Davout, Single room, private shower, private bathroom	45 min		€745	€825	€575
St Mandé, Single room, private shower, private bathroom	40 min	€780	€580	€845	€595

Please note subject to changes pre Olympics

### Other Charges

Prices per booking	
Registration Fee	€85
Accommodation Booking Fee	€55
Bank Charges	€12
Exam Fee - DELF A2	€190
Exam Fee - DELF B1	€225
Exam Fee - DELF B2	€280
Exam Fee - DALF C1	€280

Prices per week	
Materials Fee**	€6

\* Optional Charges  
 \*\*Applies to all language courses

All prices are subject to change



▲ Noisy-Le-Grand Residence  
 2 Bd du Levant,  
 Noisy-le-Grand 93160

### Quick Facts

#### Room Types

Single

Studio

1 -bed apartment

#### Board Types

**Bed & breakfast:** Room and breakfast provided

**Half Board:** Room, breakfast and one evening meals provided

**Self-catering:** Room provided without meals

**Semi-Board:** Room, breakfast and 5 evening meals per week

Residences are self-catering

#### Bathroom Types

**En-suite:** Bedroom with adjoining private bathroom

**Shared Bathroom:** Bathroom shared with other residents and/or host family

Arrival and departure day:  
 Sunday to Saturday

# Cyprus

## Course Fees

### General English and IELTS Preparation

Prices and lessons are per week

Course	Lessons	1 to 11	12 to 23	24+
Standard	20	€255	€215	€180
Intensive	25	€310	€245	€210
Combination course	30	€585	€520	€485

IELTS Preparation available in Standard 20 lessons. Can be combined with General English as part of an Intensive Course  
Minimum level for IELTS preparation: B1

One -to -One and Small Group	Lessons	Price	Extra lesson
One to One lessons	5	€275	€55
Additional person		€20 (per lesson)	

### Family and Young Learners

Family Options	Lessons	1+	Extra adult/child
Parent & Child (age 5+)	20	€490	€245

Available all year round

Young Learner (age 5 - 15)	Lessons	1+	Extra adult/child
Standard English (age 5-15)	20	€270	€245

Available from April to September. October to March will be subject to availability & upon request

### Summer Camp

Course & ages	Accomm. & Catering	Lessons	Dates	Price
UCLan Summer Camp (ages 12 -17)	Twin en -suite, full -board	20	23 Jun - 11 Aug	€895
Limassol Day Camp (ages 7 -15)	Lunch + snack, no accomm	20	17 Jun - 09 Aug	€400



▲ 138 Vasileos Constantinou  
Limassol 3080 Cyprus

### Quick Facts

#### All Courses Include

Online placement test  
Organised social programme  
End of course certificate  
WiFi

#### English Courses

Minimum age: 16  
Minimum stay: 1 week  
Courses start: Every Monday Class  
Size: Max 15, Low season avg. 6,  
High season av. 12

#### English Lessons

1 lesson: 45 min  
20 lessons: 15 hrs/week  
25 lessons: 18.75 hrs/week  
30 lessons: 22.5 hrs/week

#### Family Options

Parent & Child, Young Learner  
(Mon - Fri)  
Tuition only

Day Camp (Mon - Fri)  
Tuition, lunch and half day activities

Course schedule is subject  
to availability

#### Centre Closure Dates

1 to 5 Jan 15 Aug  
18, 25 Mar 1, 28 Oct  
1 Apr 23 Dec 2024 to  
3, 6 May 6 Jan 2025  
24 Jun



# Cyprus

## Accommodation, Transfers and Other Fees

### Accommodation Prices are per week

Hotel & Apartment <small>Age 18+ and accompanied children</small>	Winter rate 1-4 weeks 31 Dec - 1 Jun, 3 Nov - 29 Dec	Summer rate 1-4 weeks 2 Jun - 2 Nov	Winter rate 4+ weeks 31 Dec - 1 Jun, 3 Nov - 29 Dec	Summer rate 4+ weeks 2 Jun - 2 Nov
Navarria Blue Hotel Single En-Suite BB	€380	€480	€360	€460
Navarria Blue Hotel Twin En-Suite BB	€225	€270	€215	€250
Navarria Blue Hotel Triple En-Suite BB	€210	€260	€200	€240
Navarria Blue Hotel Single En-Suite HB	€470	€565	€430	€535
Navarria Blue Hotel Twin En-Suite HB	€320	€365	€300	€335
Navarria Blue Hotel Triple En-Suite HB	€310	€350	€290	€320

Includes shuttle bus to and from school if booked directly through Bayswater Cyprus  
Twin and Triple rooms available only for students travelling together

Hotel & Apartment <small>Age 18+ and accompanied children</small>	Winter rate 1-4 weeks 31 Dec - 27 Apr, 3 Nov - 29 Dec	Summer rate 1-4 weeks 28 Apr - 2 Nov
Tasiana Star Hotel Single En-Suite SC	€440	€525
Tasiana Star Twin Hotel En-Suite SC	€265	€300
Tasiana Star Triple Hotel En-Suite SC	€200	€230

Additional person € 120  
Tasiana Star: Bed & Breakfast €55 p/w

Homestay Age 16+	B&B	Half Board
Single Shared Bathroom	€210	€260

Students in a single room may be housed in the same homestay as other students

Homestay Summer Supplement	Dietary Supplements
2 Jun - 31 Aug €35 p/w	€30 - 55 p/w

### Other Charges

Prices per booking	
Registration Fee	€75
Accommodation Booking Fee	€55
Exam Fee - IELTS*	€240
English in Cyprus	1-2 people €80
Shuttle bus per week	3-4 people €100
Credit card fee	1.50%
Prices per week	
Materials Fee**	€6

\* Optional Charges  
\*\*Applies to all language courses

All prices are subject to change



▲ Navarria Blue Hotel  
Verginas 14, Limassol 4532,  
Cyprus

### Quick Facts

#### Room Types

Single 🛏

Twin 🛏🛏

Studio 🛏🛏

#### Board Types

**Bed & breakfast (BB):** Room and breakfast provided

**Half Board:** Room, breakfast and one evening meals provided

**Self-catering (SC):** Room provided without meals

Residences are self-catering  
**Summer Residence self-catering**

#### Bathroom Types

**En-suite:** Bedroom with adjoining private bathroom

**Shared Bathroom:** Bathroom shared with other residents and/or host family

**Arrival and departure day:**  
Sunday to Sunday

Summer Residence Age 18+	Self Catering
1-Bed Studio	€285

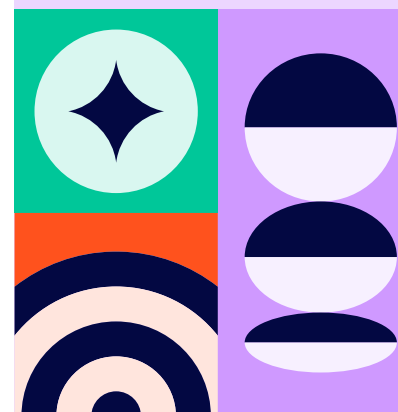
Availability  
30 Jun - 25 Aug 2024

### Transfers

Larnaca or Paphos	One way
Medium 1-4 people with 3 bags	€80
Large 3-6 people with 6 bags	€100

Summer Camp Transfers	One way
Larnaca	
Medium 1-4 people with 3 bags	€45
Large 3-6 people with 6 bags	€55

Paphos	
Medium 1-4 people with 3 bags	€180
Large 3-6 people with 6 bags	€220



# Find out more

## Agent enquiries

Our agents are appointed experts in your country and can give you specialist advice on our courses, as well as any visa requirements. Contact us for an agent in your area. For agent sales enquiries please contact us at [partners@bayswater.ac](mailto:partners@bayswater.ac)

## Email us

[partners@bayswater.ac](mailto:partners@bayswater.ac)

## Call us

+44 (0)20 7221 7259

## Visit us

167 Queensway, London W2 4SB

 [bayswatercollege](https://www.facebook.com/bayswatercollege)

 [studybayswater](https://www.instagram.com/studybayswater)

 [bayswater.ac](https://www.bayswater.ac)

A social education enterprise  
made in London

12042024 -00009

