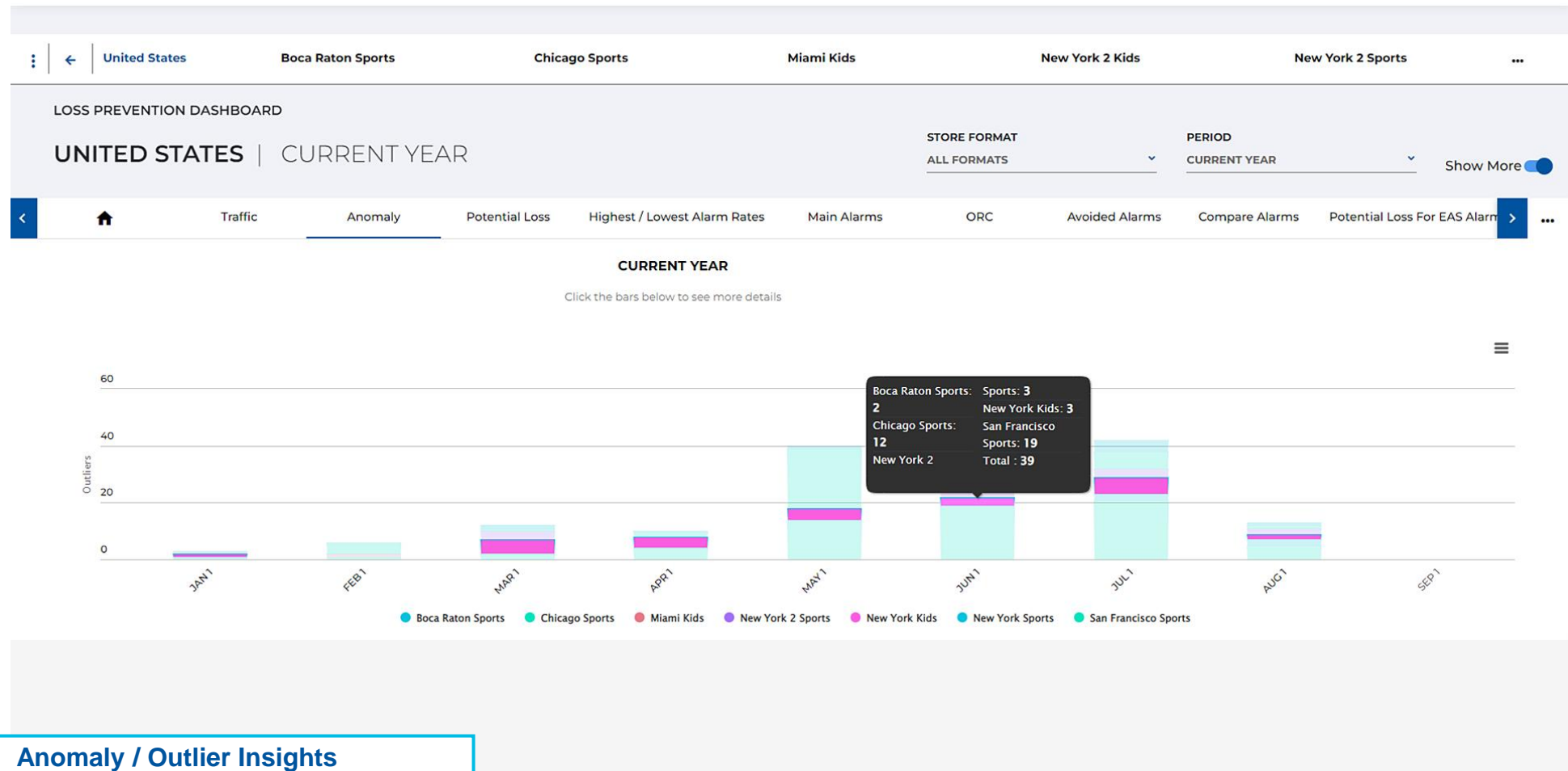




### Power Hours / EAS Alarms

Reduce EAS activity by understanding the most vulnerable hours for theft.

- Identify hours and days where EAS alarms are the highest and lowest
- Adjust staffing to address problem hours and locations



### Anomaly / Outlier Insights

Identify anomalies and outliers where unusual shrink activity is occurring

- Identify problem stores where shrink activity is inconsistent
- Identify possible patterns of unusual behavior

← BACK TO MAIN DASHBOARD

## COMPARE STORES

STORES

ALBUQUERQUE - (55), BOULDER CITY - (40), ...

PERIOD

PREVIOUS MONTH

COMPARE

EAS

Traffic

Metal Foil Detection

Jammer Detection

Magnet Detection

PREVIOUS MONTH

200

150

100

50

0

OCT 1 THU   OCT 2 WED   OCT 3 THU   OCT 4 FRI   OCT 5 SAT   OCT 6 SUN   OCT 7 MON   OCT 8 TUE   OCT 9 WED   OCT 10 THU   OCT 11 FRI   OCT 12 SAT   OCT 13 SUN   OCT 14 MON   OCT 15 TUE   OCT 16 WED   OCT 17 THU   OCT 18 FRI   OCT 19 SAT   OCT 20 SUN   OCT 21 MON   OCT 22 TUE   OCT 23 WED   OCT 24 THU   OCT 25 FRI   OCT 26 SAT   OCT 27 SUN   OCT 28 MON   OCT 29 TUE   OCT 30 WED   OCT 31 THU

● ALBUQUERQUE - (55) ● BOULDER CITY - (40) ● CHLORIDE - (43) ● GALVESTON - (46) ● HAMBURG - (61)



### Store Comparison

Identify anomalies and outliers where unusual shrink activity is occurring comparing multiple stores

- Identify possible patterns of unusual behavior across EAS, Traffic, and ORC data types.

## LOSS PREVENTION DASHBOARD

DEMO | 🔄 CURRENT YEAR

STORE FORMAT

ALL FORMATS

PERIOD

CURRENT YEAR

Show More

- Home
- EAS
- Traffic
- Potential Loss
- Highest & Lowest EAS/Traffic Rates**
- Main Alarms
- ORC
- Avoided Alarms
- Compare Alarms
- Potential Loss For EAS
- ...

ⓘ Stores with both Traffic and EAS are only considered for alarm rate.

EAS | Traffic | **EAS/Traffic**

### ! HIGHEST ALARM RATE BY TRAFFIC

Based on alarm rate



STORE	COUNTRY	EAS	TRAFFIC	EAS/TRAFFIC	CHANGE
San Francisco - (21)	United States	26,459	466,446	5.67%	4.38%
Tucumcari - (8)	United States	26,369	465,555	5.66%	1.97%
Dortmund - (58)	Germany	26,237	464,026	5.65%	1.44%
Ridgecrest - (24)	United States	26,076	462,480	5.64%	0.9%
Garden Grove - (5)	United States	26,284	466,341	5.64%	0.79%
Shoshone - (23)	United States	26,518	470,954	5.63%	1.69%
Albuquerque - (55)	United States	26,268	466,566	5.63%	0.61%
Houston - (48)	United States	26,335	467,878	5.63%	1.62%
Carlsbad - (18)	United States	26,346	468,987	5.62%	1.74%
Meadview - (41)	United States	26,529	472,940	5.61%	0.38%

### ✓ LOWEST ALARM RATE BY TRAFFIC

Based on alarm rate



STORE	COUNTRY	EAS	TRAFFIC	EAS/TRAFFIC	CHANGE
New Braunfels - (52)	United States	26,071	484,527	5.38%	2.7%
Stuhr - (59)	Germany	26,068	483,299	5.39%	3.36%
Laughlin - (15)	United States	26,003	477,949	5.44%	2.66%
Amarillo - (9)	United States	26,097	479,658	5.44%	0.96%
Los Angeles - (16)	United States	25,761	473,243	5.44%	2.34%
Las Vegas - (13)	United States	25,902	474,320	5.46%	2.13%
Tucson - (28)	United States	26,187	478,750	5.47%	0.74%
Hamburg - (63)	Germany	26,136	476,950	5.48%	1.79%
Pahrump - (32)	United States	26,095	474,881	5.5%	1.22%
Boulder City - (39)	United States	26,036	473,380	5.5%	1.4%



### Highest/Lowest EAS/Traffic Rates

Identify stores with high EAS, Traffic, and Alarm rate over traffic for the selected period. Identify red stores in a single view

LOSS PREVENTION DASHBOARD

DEMO | CURRENT YEAR

STORE FORMAT  
ALL FORMATS

PERIOD  
CURRENT YEAR

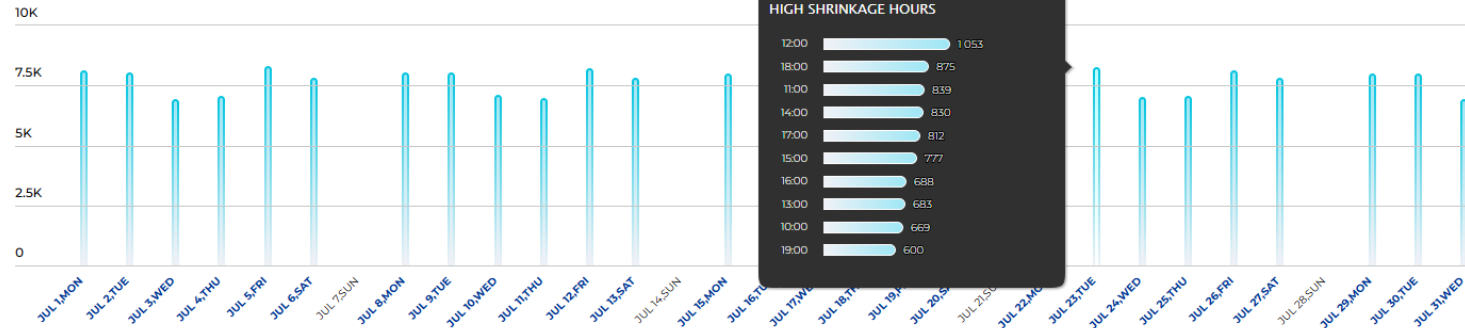
Show More

- Home
- EAS**
- Traffic
- Potential Loss
- Highest & Lowest EAS/Traffic Rates
- Main Alarms
- ORC
- Avoided Alarms
- Compare Alarms
- Potential Loss For EAS
- ...

Show Details

JULY

Click the bars below to see more details



**EAS widget**

Provides patterns and trends on the shrinkage data and provides the high shrinkage hours

- Identify possible patterns of unusual behavior

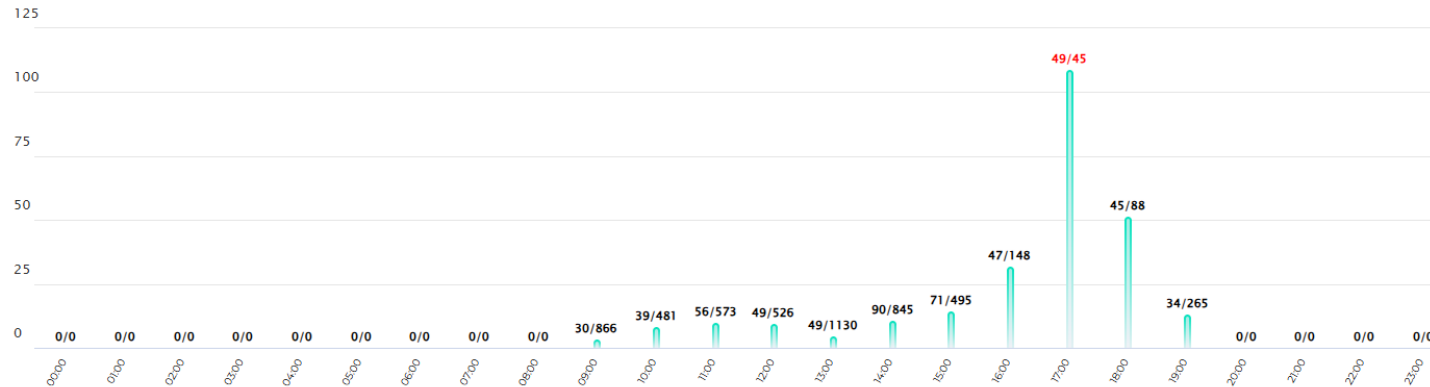
- <
- Home
- EAS
- Traffic
- Main Alarms
- ORC
- Alarms By Hour
- Alarm Rate By Traffic In Store
- Deactivations By Day And Hour
- Avoided Alarms
- Deactivations
- >
- ...

Show the alarm trend according to average traffic over the period

ALARM RATE (%)

ALARM RATE - SEPTEMBER 21 SATURDAY

< BACK



xxxx / xxxx - EAS / Traffic

Alarm rate



### Alarm Rate By Traffic in store

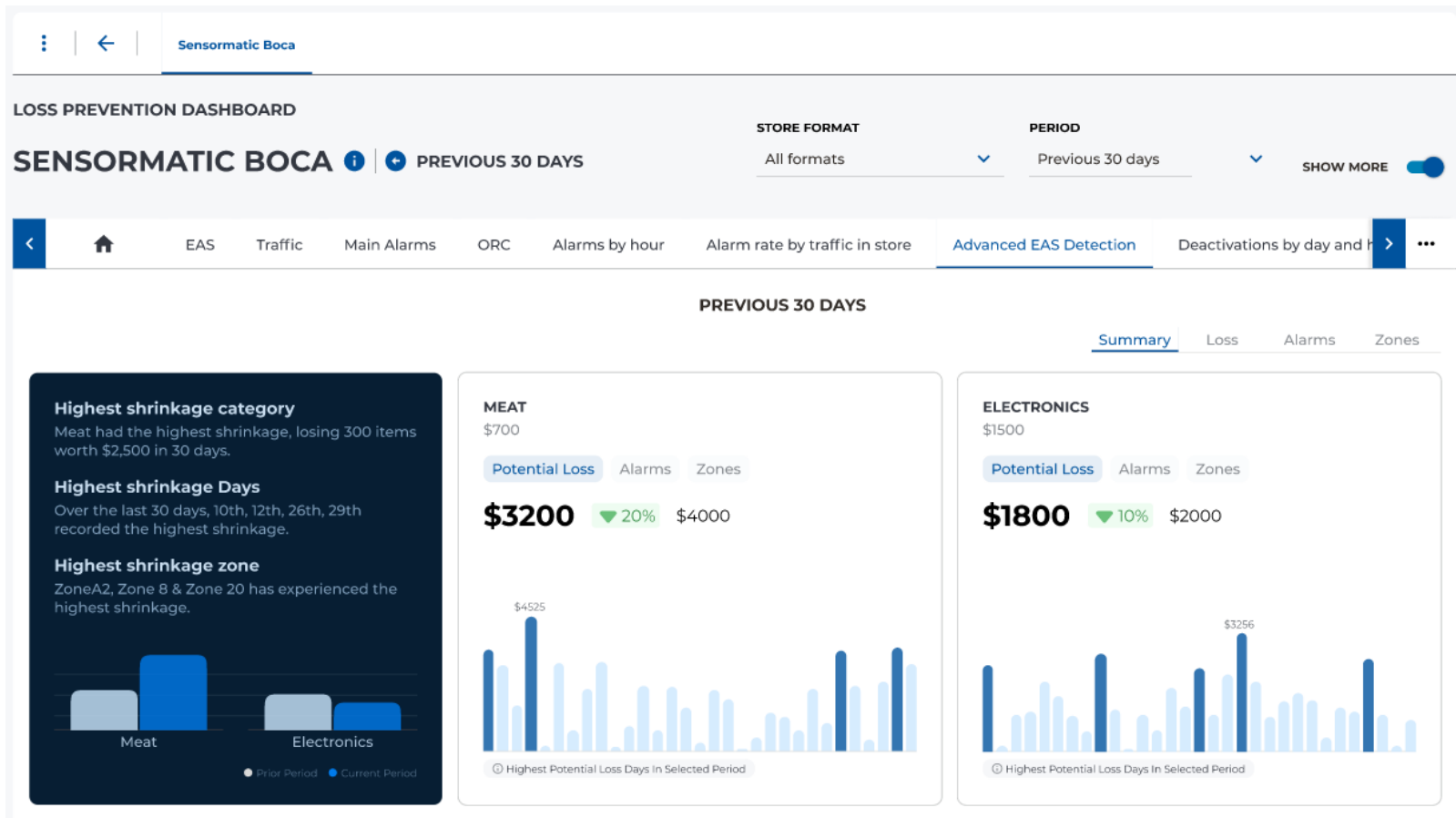
Identify alarm rate by traffic in store at the hourly level granularity

- Identify problem stores where EAS is greater comparing traffic

# Advanced EAS: MVP



**Advanced EAS - MVP**  
Identify category level

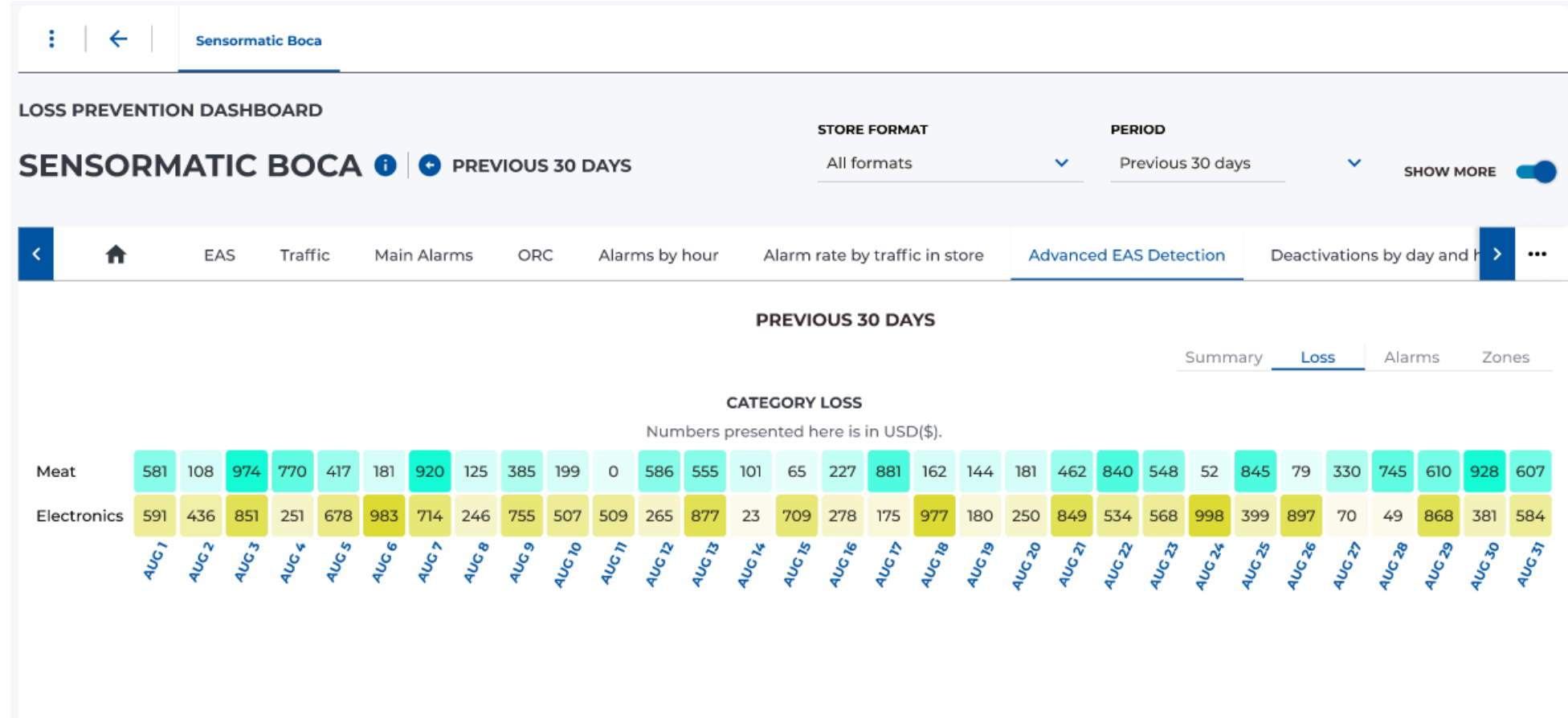


### Advanced EAS – Category level Summary

Identify category level insights of EAS alarms

- Identify problem category to help in shrink reduction and right placement of category items in right zone.





**Advanced EAS - Loss**

Identify category loss value(\$) by category day and drill down to hourly level granularity

- Identify problem category and hour to pinpoint the shrinkage event.

Sensormatic Boca

LOSS PREVENTION DASHBOARD

**SENSORMATIC BOCA** ⓘ + PREVIOUS 30 DAYS


STORE FORMAT: All formats | PERIOD: Previous 30 days | SHOW MORE

EAS Traffic Main Alarm

Summary Loss Alarms Zones

Meat

TIME STAMP	VIDEO
11:01:42 AM	video_rec_11:01:42_A
11:10:29 AM	video_rec_11:10:29_A
11:16:44 AM	video_rec_11:16:44_A
11:20:10 AM	video_rec_11:20:10_A
11:27:05 AM	video_rec_11:27:05_A

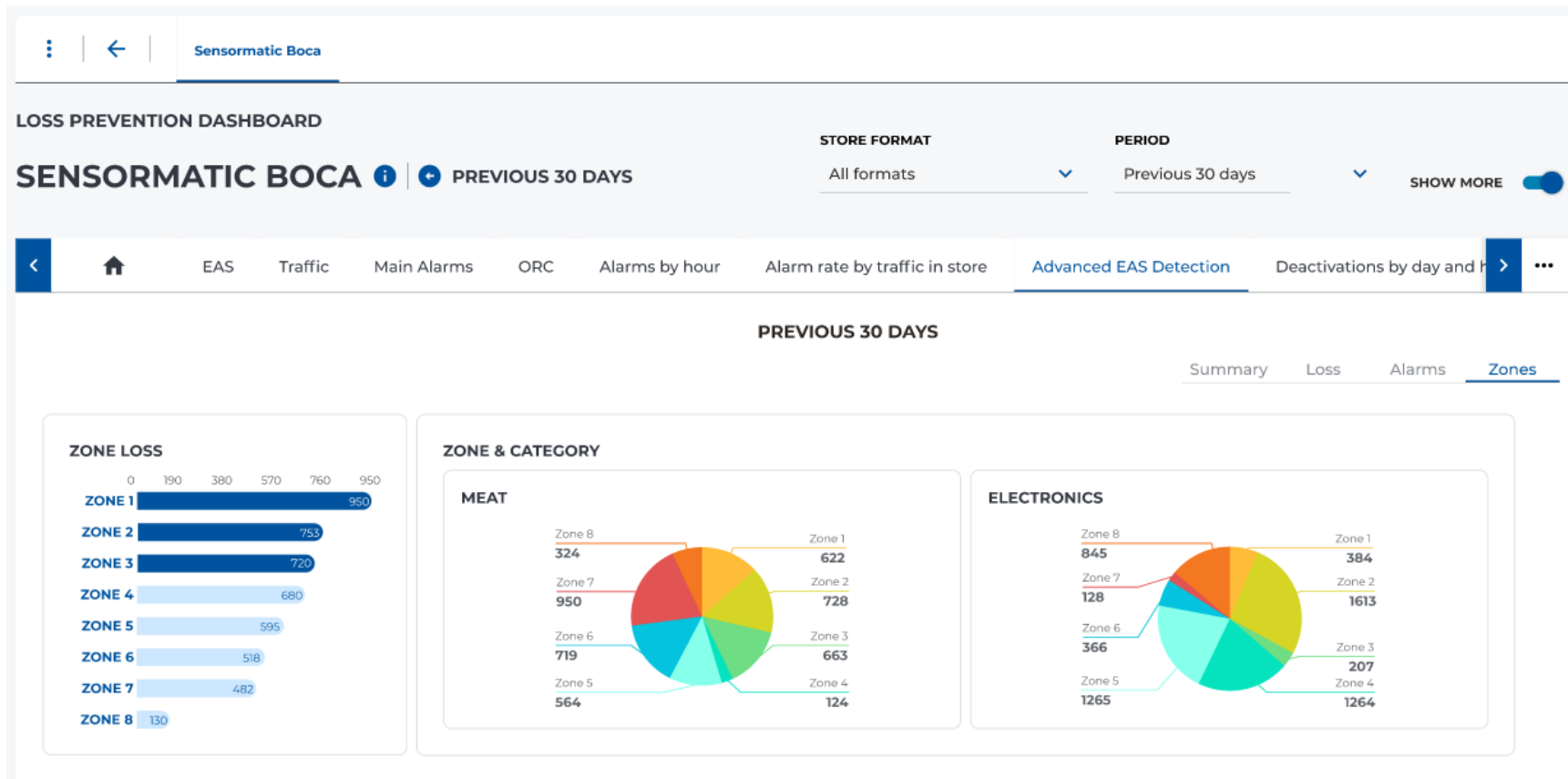


Close



### Advanced EAS – Video

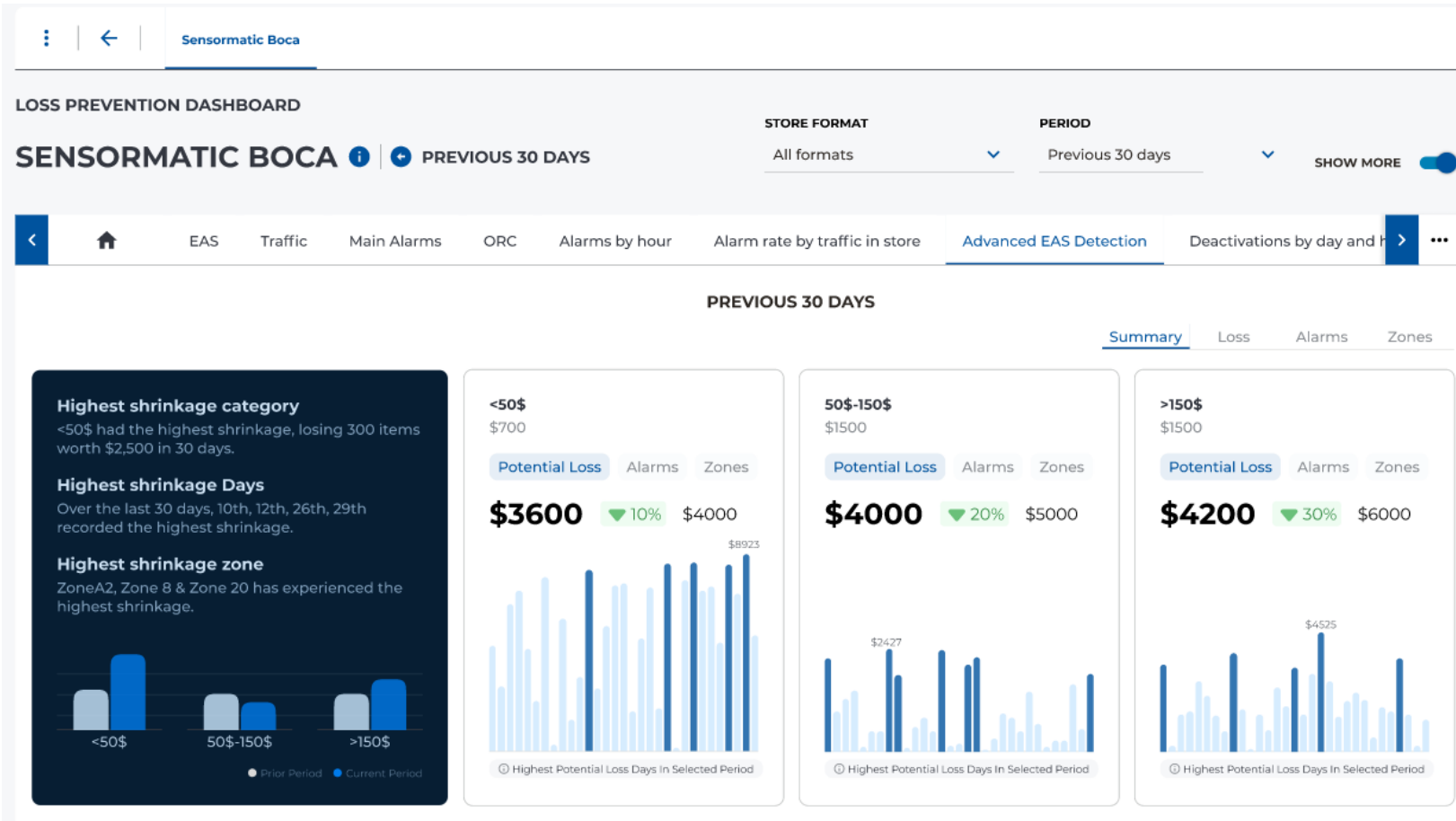
Identify category level EAS event and can go play video to identify the red shopper



### Advanced EAS - Zone

Identify category level insights for a category by Zone for previous 30 days.

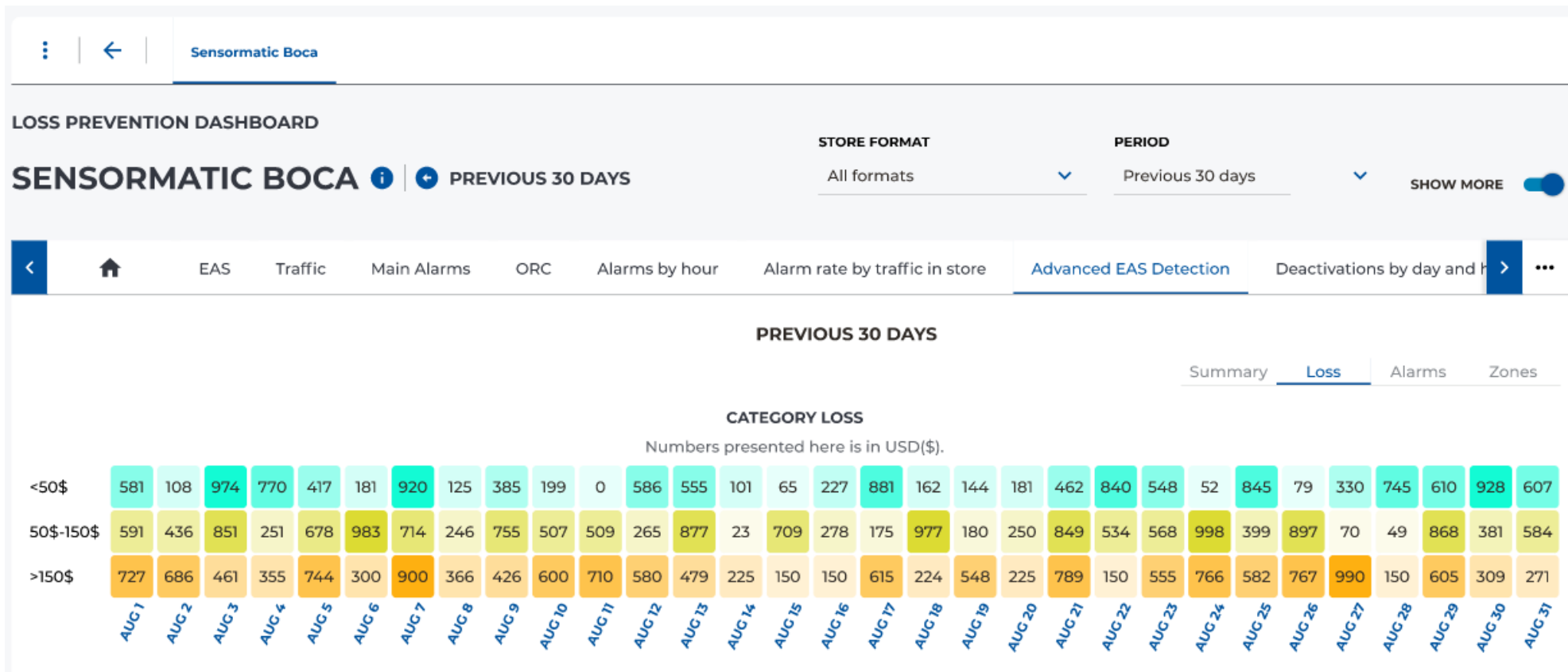
- Identify problem zones where EAS is greater comparing other zones



### Advanced EAS – Price level Summary

Identify Price level insights of EAS alarms

- Identify price categories to help in shrink reduction and right placement of items in right zone.



**Advanced EAS - Loss**

Identify category loss value(\$) by category day and drill down to hourly level granularity

- Identify problem category and hour to pinpoint the shrinkage event.

Sensormatic Boca

LOSS PREVENTION DASHBOARD

**SENSORMATIC BOCA** ⓘ + PREVIOUS 30 DAYS

STORE FORMAT: All formats | PERIOD: Previous 30 days | SHOW MORE

EAS Traffic Main Alarms ORC Alarms by hour **Advanced EAS Detection** Deactivations by day and h

PREVIOUS 30 DAYS

Summary **Loss** Alarms Zones

BACK

**<50\$** EAS 5

TIME STAMP	VIDEO
11:01:42 AM	📺 video_rec_11:01:42_AM
11:10:29 AM	📺 video_rec_11:10:29_AM
11:16:44 AM	📺 video_rec_11:16:44_AM
11:20:10 AM	📺 video_rec_11:20:10_AM
11:27:05 AM	📺 video_rec_11:27:05_AM

**50\$-150\$** EAS 4

TIME STAMP	VIDEO
11:01:42 AM	📺 video_rec_11:01:42_AM
11:10:29 AM	📺 video_rec_11:10:29_AM
11:16:44 AM	📺 video_rec_11:16:44_AM
11:20:10 AM	📺 video_rec_11:20:10_AM

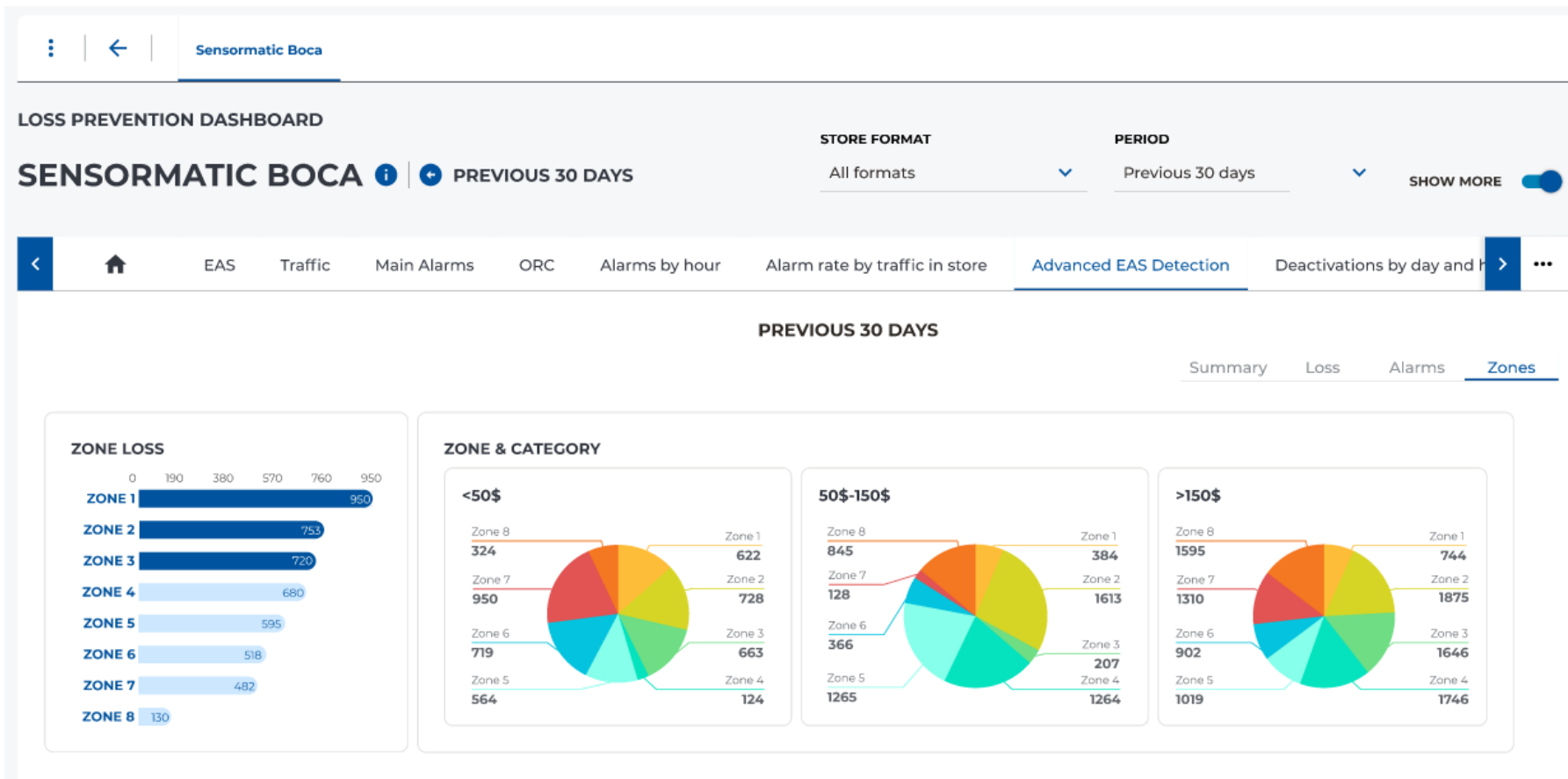
**>150\$** EAS 3

TIME STAMP	VIDEO
11:01:42 AM	📺 video_rec_11:01:42_AM
11:10:29 AM	📺 video_rec_11:10:29_AM
11:16:44 AM	📺 video_rec_11:16:44_AM



### Advanced EAS – Video

Identify category level EAS event and can play video to identify the red shopper



### Advanced EAS - Zone

Identify price level insights for a category by Zone for previous 30 days.

- Identify problem zones where EAS is greater comparing other zones