



Clear Craft Ice Maker

Instruction Manual and Safety Guide

Rev 5

KLARIS IS A TRADEMARK OF KLARIS INC.

Klaris Clear Craft Ice Maker
Klaris Inc.
www.craftklaris.com
email: info@craftklaris.com
Minneapolis, Minnesota



Warranty: 1-Year, Limited Warranty
Model: KLARIS-001
Power: 120V~ | 60Hz | 1.2A
Weight: 9.0lbs (4.1kg)
Size: 9" x 9" x 12" (229mm x 229mm x 305mm)
Designed & Engineered in Minnesota
Made in China
Patent Pending

USA: THIS PRODUCT IS FOR HOUSEHOLD USE ONLY
CANADA: THIS PRODUCT IS FOR HOUSEHOLD &
COMMERCIAL USE ONLY

For more information, visit www.craftklaris.com

Table of Contents

IMPORTANT SAFEGUARDS AND SAFETY INSTRUCTIONS.....	3
PRODUCT DIAGRAM.....	4
BEFORE FIRST USE.....	5
OPERATION OF ICE MAKER.....	5
CARE AND CLEANING.....	7
SERVICE AND REPAIR.....	8
WARRANTY.....	8

Important Safeguards

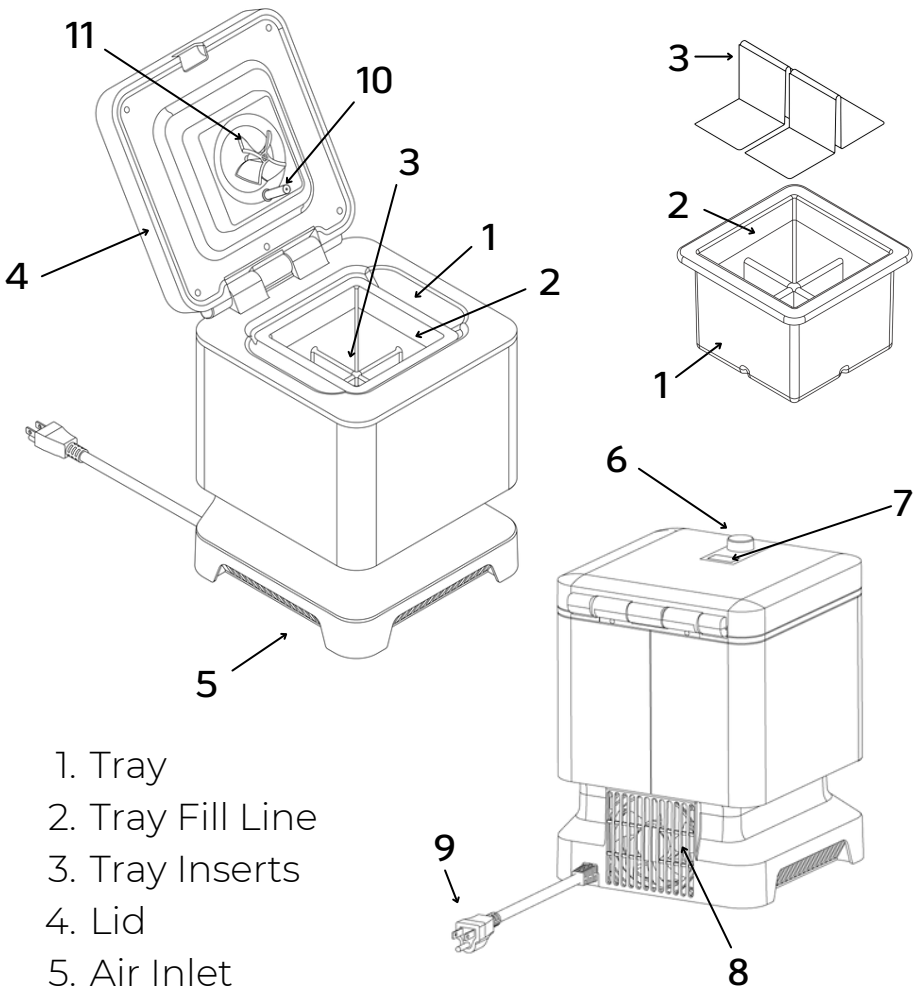
READ ALL INSTRUCTIONS BEFORE USE.
DO NOT THROW AWAY THIS SAFETY GUIDE.

When using electrical appliances, basic safety precautions should always be followed including the following:

- To protect against risk of electrical shock, DO NOT put ice maker in water or other liquid.
- This appliance is not intended for use by children or by persons with reduced physical, sensory, or mental capabilities, or lack of experience and knowledge. Close supervision is necessary when any appliance is used near children. Children should be supervised to ensure that they do not play with the appliance.
- Turn the appliance OFF, then unplug from the outlet when not in use, before assembling or disassembling parts and before cleaning. To unplug, grasp the plug and pull from the outlet. Never pull from the power cord. Avoid contacting moving parts. Do not attempt to defeat any safety interlock mechanisms.
- Do not operate any appliance with a damaged cord or plug or after the appliance malfunctions, or is dropped or damaged in any manner. Contact the manufacturer at their customer service email address (info@craftklaris.com) for information on examination, repair, or adjustment.
- The use of attachments not recommended or sold by the manufacturer may cause fire, electric shock or injury.
- Do not let cord hang over edge of table or counter.
- Do not let cord contact hot surface, including the stove.
- Do not use any other tray or insert other than the Klaris tray and insert provided with the machine. Use of unapproved trays or inserts could lead to a potential fire, bodily injury or a damaged product.
- Use caution when removing the tray from the machine as water could spill.
- Unplug the ice maker when not in use or before cleaning or servicing.
- Ensure that the main supply voltage is 120V.
- To avoid an electrical overload, make sure that no other appliances, like microwaves or toasters are plugged into the same circuit as the ice maker.
- The ice maker is not suited for outdoor use. Only use indoors. The device is intended for indoor countertop use only.
- Do not attempt to service the ice maker. There are no user serviceable parts inside the ice maker. Repair should be completed by authorized personnel only. Opening the ice maker or removing any parts will result in a void of the warranty.
- Do not use the ice maker if any of the rubber feet have been removed.
- Clean the ice maker with caution. Use a wet sponge or cloth to wipe spills on the machine and dry area after.
- Do not fill the tray past the fill line.
- Do not use extension cords. A short power cord is used to avoid tripping over or becoming entangled in the cord.
- Avoid using the ice maker or attempting to handle the power cord or power plug if your hands are wet as it can lead to electric shock.
- To reduce the risk of fire and electric shock, do not remove any components of the ice maker or attempt to use the ice maker if it has been disassembled in any way.
- Use of ice maker for anything other than intended use will result in a void of the warranty.
- Do not turn the ice maker upside down or on its' side.
- When ice maker is moved or transported, please wait two (2) hours before operation.
- !Caution; cold burn hazard, do not touch cold plate, switch power OFF to stop finger freezing.
- USA: This product is for household use only.
- CANADA: This product is for household & commercial use only.

SAVE THESE INSTRUCTIONS

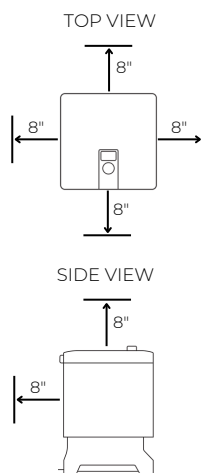
Product Diagram



1. Tray
2. Tray Fill Line
3. Tray Inserts
4. Lid
5. Air Inlet
6. Control Panel - Scroll/Knob
7. Control Panel - Screen
8. Air Outlet
9. AC Cord & Plug
10. Ice Measurement Probe
11. Mixer

Before First Use

- Remove all interior and exterior packaging materials.
- Open the lid and remove the tray and inserts from the ice maker cavity. Wash the tray and inserts by hand using warm water and soap. Carefully clean the inside of the lid using warm, soapy water and a cloth.
- The ice maker must be placed on a dry, stable and level surface with sufficient ventilation, far from heat sources such as ovens, heaters and corrosive gases.
- Leave an 8-inch clearance on all sides of the ice maker for proper ventilation.
- For best performance, ice maker should be run in an environment between 65-72F (18-22C). Temperatures above 72F (22C) may increase freeze times 0-3 hours beyond the typical cycle time of 8-12 hours. Do not operate in environments greater than 80F (27C).
- Do not fill the tray with hot water. This may damage the ice maker. It is best to fill the tray with room temperature water.
- Do not place other liquids or solids into the tray as it may damage the mixer or other components of the ice maker. Use for anything other than water will result in a void of the warranty.



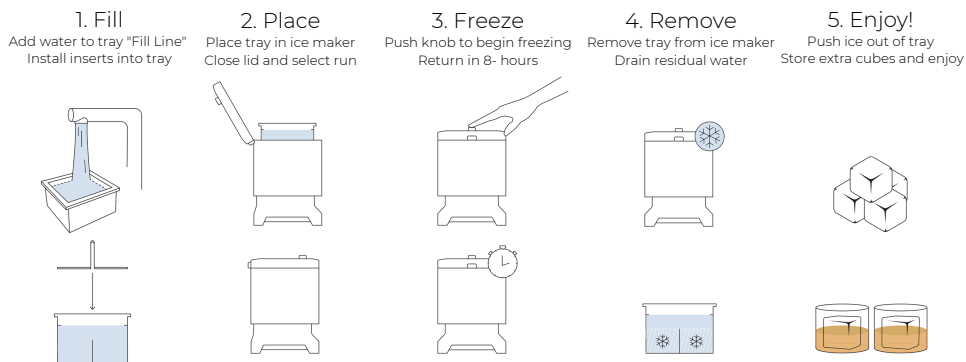
Operation of Ice Maker

- Plug the ice maker into a 120V wall outlet. This will turn on the ice maker. The digital display will illuminate with the Klaris logo and then default to the idle screen. The screen will read "Idle - Press to Start"
- Fill the tray to the "Fill Line." Do not over or under fill. See diagram on Page 6.
- Install the inserts into the tray until the inserts are flush with the bottom of the tray. Make sure all air bubbles are removed from underneath the inserts.
- Carefully place the tray assembly into the cavity of the ice maker and close the lid.
- If the digital display is no longer showing the progress screen, rotate the knob until it appears.
- Push down on the knob to start the process. The screen will change from "Idle - Press to Start" to "Chilling."
- To initiate Delayed Start - From the "Idle - Press to Start" screen, rotate the knob. Additional screens showing different delay times will appear (ie "Delay Start - 4hrs"). Push the knob in to initiate the desired delayed start time. A countdown timer to the start of the run will appear.
- If for any reason the process needs to be stopped during the delayed start or processing time period, rotate the knob and follow the on screen instruction to cancel the run.
- At the top of the screen, the overall process time will be displayed.
- Do not open the lid during the ice making process otherwise an alarm will trigger.
- Ice making should be completed in 8-12 hours, assuming an ambient environment of 65-72F (18-22C). Temperatures above 72F (22C) may increase freeze times 0-3 hours. When the ice making cycle is complete, the machine will beep 3 times to notify the user and the screen will read "Ice Ready."
- The machine will actively cool the ice for up to 6 hours after completion. A hold timer will be displayed below "Ice Ready" telling the user how long they have to retrieve their ice.
- At any point during these 6 hours, the user can open the lid and remove the tray from the ice maker. For best results, try and retrieve the ice within 0-3 hours. Note: residual water and ice will be present in the tray. Drain residual water from the tray.
- Carefully remove the inserts and ice from the tray, then peel ice away from the inserts.
- Store extra cubes and/or enjoy immediately.
- If the ice is not retrieved within the 6 hour window, the machine will transition to a Timeout state and stop actively cooling the ice. See Error Table for further instructions.
- To turn the ice maker off, unplug from the outlet.

Progress Screen



User Workflow



Troubleshooting Errors

When an error message is triggered on the display screen:

- Screen will display error description
- Machine will beep 3 times
- Machine will shut down the cooling cycle and any ice and/or water in the tray will no longer be actively cooled

To clear an error:

- Note the error code and review the corresponding error description. Determine the action needed.
- Remove the tray from the machine and empty its contents. **CAUTION:** The lid should open easily. If not, do not try to pry open the lid as this can damage the mixer and the ice measurement probe. Unplug the machine and let it thaw completely (~ 24 hours). Do not restart a cycle until all ice has thawed, the tray has been removed, and ice/water contents emptied.
- **CAUTION:** If the tray is not removed and emptied of its contents, ice overgrowth could occur in the next cycle, potentially damaging the machine. Ice overgrowth is defined as ice that has formed higher than designed for machine use.
- Once complete, follow the onscreen instructions (may need to rotate knob in either direction) to acknowledge the error and progress the machine back to the "Idle - Press to Start" screen.
- Fill the tray with water. Re-install the inserts into the tray and place into the machine. The machine is now ready to start a new cycle.



Error Descriptions

The Table below shows the error codes, description of the error on the machine screen, and actions to be taken to correct the error.

Error #	Description	Explanation of Action Required
1	Hot Water Temp	Water temperature exceeds 95F (35C). Placing hot water into the machine could damage components and impact the freezing process. Use ambient or room temperature water to make ice.
2	Hot Plate Temp	Plate temperature exceeds 130F (55C). WARNING: Unplug the machine and contact support if error is observed.
3	Low Air Temp	The ambient air temperature is lower than 50F (C). The recommended ambient (room) operating air temperature environment is 65-72F (18-22C).
4	Open Lid	Lid is opened for more than 3 seconds while the machine is running. If error occurs, remove the tray from the machine and empty the water and/or ice contents before restarting.
5	High Air Temp	Ambient air exceeds 90F (32C). The recommended ambient (room) operating air temperature environment is 65-72F (18-22C).
6	Timeout	The machine has exceeded the 6 hour hold time. Once ice is sensed at the probe, the machine will be in an Ice Ready/Hold state for up to 6 hours. If this error occurs, ice will remain in the tray but will no longer be actively cooled and will slowly melt from the bottom up. Remove the tray from the machine and remove contents from tray. Do not restart the machine with ice in the tray. NOTE: The longer the ice is held in the "Ice Ready" state, more deformations can occur on the top surface of the cubes.
7	Mixer Frozen	Motor current exceeds a preset threshold during the ice making cycle. This can happen due to ice overgrowth or the inserts floating up into the mixer during the process. In the case of ice overgrowth, do not force open the lid if met with significant resistance, as this can damage the ice measurement probe and mixer. If the mixer frozen alarm is persistent from run to run, please reach out for support.
11	Mixer Stuck	Motor current exceeds a preset threshold in the first 10 minutes of an ice making cycle. Verify that the inserts are fully seated and not floating up into the mixer. Verify the mixer in the lid can turn freely by rotating it 180 degrees clockwise. If the mixer stuck alarm is persistent from run to run, please reach out for support.

For additional error details and technical FAQs, please visit
www.craftklaris.com/pages/support

Care and Cleaning

- ! WARNING: To avoid the risk of electrical shock, always ensure the product is unplugged from the electrical outlet before assembling, disassembling, relocating, servicing or cleaning it.
- ! WARNING: Never submerge the ice maker into water or any other liquid as this may damage the unit or create a hazard.
- Before cleaning, make sure that the machine has had sufficient time to reach room temperature.
- ! Caution; cold burn hazard, do not touch cold plate, switch power OFF to stop finger freezing.
- Never use harsh, abrasive cleaners, heavy-duty cleaners or solvents on any surface.
- All exterior surfaces can be washed with a damp, soapy cloth and then dried with a clean towel.
- The tray and inserts can be hand washed with warm water and soap.
- Before storage, clean and dry the ice maker. Make sure to store in a clean, dry place.

Service and Repair

For service, repair or any questions regarding your Klaris product, first visit www.craftklaris.com. If questions remain or there is a need for service, email info@craftklaris.com. Do not return the product to the manufacturer without talking to or emailing a Klaris customer service associate. A return authorization is required

Do not try to service or disassemble the product in any way.
Service to only be done by a trained Klaris representative.

All inquiries should be directed to
info@craftklaris.com.

Warranty

Limited One Year Warranty - Ice Maker

Klaris Inc warrants the ice maker (see below for tray, inserts and accessory warranty information) against any defects that are due to faulty material or workmanship for a one (1) year period after the original purchase date. The ice maker warranty is only valid for:

- The original customer.
- A product that has been purchased through authorized retailers.
- A product with the original receipt for proof of purchase to make a warranty claim.
- Products purchased and used within the United States and Canada.
- The warranty does not include damage to the product resulting from:
 - Accident, misuse or repairs performed by unauthorized personnel
 - Operation with the wrong type of current or voltage
 - Operation with trays or inserts other than official Klaris trays and inserts purchased through an authorized retailer
 - Operation with liquids/solids other than water
 - Failure to follow the cleaning, operating or storage instructions
 - Failure to comply with the safeguards listed in the safeguards and operating instruction sections of this document

Limited 3 Month Warranty - Tray, inserts and Accessories

Klaris Inc warrants the tray, inserts and accessories against any defects that are due to faulty material or workmanship for a 3 month period after the original purchase date. The tray, inserts and other accessories warranty is only valid for:

- The original customer.
- A product that has been purchased through authorized retailers.
- A product with the original receipt for proof of purchase to make a warranty claim.
- Products purchased and used within the United States and Canada.
- The warranty does not include damage to the product resulting from:
 - Accident, misuse or repairs performed by unauthorized personnel
 - Operation with the wrong type of current or voltage
 - Operation with ice makers other than official Klaris ice makers purchased through an authorized retailer
 - Operation with liquids/solids other than water
 - Failure to follow the cleaning instructions, operating or storage instructions
 - Failure to comply with the safeguards listed in the safeguards and operating instruction sections of this document

If this product should become defective within its warranty period, or you have questions regarding warranty or service, email us at info@craftklaris.com.

Rev 5