

# RF25C5A01SR

SAMSUNG

Bespoke AI 25 cu. ft. 3-Door French Door Refrigerator  
with Auto Ice Maker & All-Around Cooling in Stainless Steel



## Available Color



Fingerprint Resistant  
Stainless Steel  
RF25C5A01SR

## Design

- 24.5 cu. ft. Capacity
- Fingerprint Resistant Finish
- ADA Compliant

## Technology

- Wi-Fi Enabled
- Power Cool & Power Freeze
- Door Alarm
- Water Filter Indicator

## Performance

- All-Around Cooling
- AI Energy Mode\*
- Auto Ice Maker with Cubed Ice

\* Available on Android and iOS devices. A Wi-Fi connection and a Samsung account are required.

## Additional Specifications

### Refrigerator: 16.5 cu. ft.

- 1 Slide-In Shelf, 3 Tempered Glass Spill-Proof Shelves
- Full-Width Drawer
- 2 Clear Drawers
- 6 Door Bins with 1 Gallon Door Bin
- Top LED Lighting

### Freezer: 8 cu. ft.

- LED Lighting

## Accessories

- Water Filter: HAF-QIN/EXP

## Rating



ENERGY STAR® rated:  
643 kWh/yr

## Dimensions

### Product Dimensions & Weight

Dimensions (WxHxD with hinges, handles and doors):  
32<sup>3</sup>/<sub>16</sub>" x 70" x 35<sup>5</sup>/<sub>8</sub>"

Dimensions (WxHxD without hinges and door):  
32<sup>3</sup>/<sub>16</sub>" x 68<sup>7</sup>/<sub>8</sub>" x 29<sup>3</sup>/<sub>4</sub>"

Dimensions (WxHxD with hinge and door, no handle):  
32<sup>3</sup>/<sub>16</sub>" x 70" x 33<sup>5</sup>/<sub>16</sub>"

Weight: 246.9 lbs

### Shipping Dimensions & Weight

Dimensions: 32<sup>5</sup>/<sub>8</sub>" x 73<sup>1</sup>/<sub>2</sub>" x 35"

Weight: 253.5 lbs

## Warranty

One (1) Year Parts and Labor on Refrigerator  
Five (5) Years Parts and Labor on Sealed Refrigeration System Only\*  
Ten (10) Years Parts and Five (5) Years Labor on Digital Inverter Compressor

\*Compressor, evaporator, condenser, drier and connecting tubing.

## UPC

Color	Model #	UPC Code
Fingerprint Resistant Stainless Steel	RF25C5A01SR	198957273872

# RF25C5A01SR

# SAMSUNG

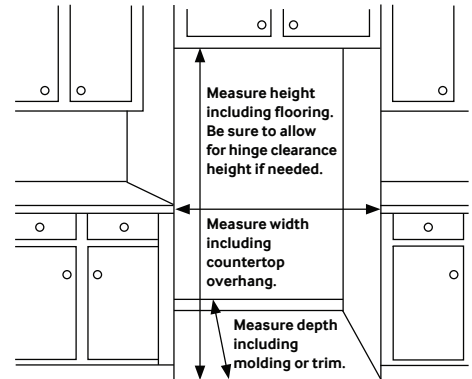
## Bespoke AI 25 cu. ft. 3-Door French Door Refrigerator with Auto Ice Maker & All-Around Cooling in Stainless Steel

### Installation Specifications

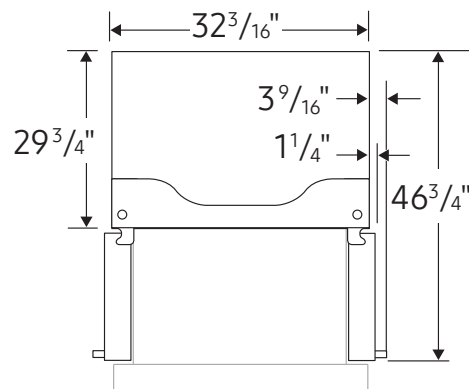
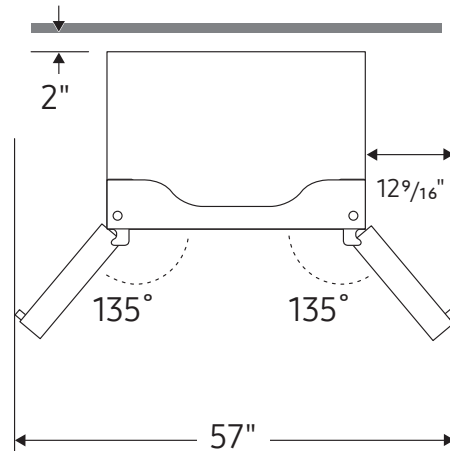
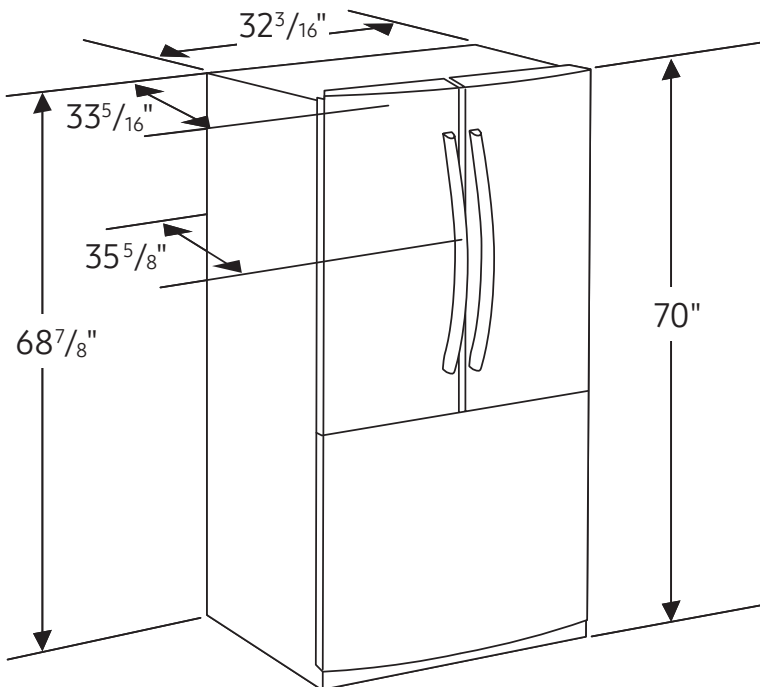
1. Measure the height, width and depth of the opening, making sure to include baseboards, molding tile, countertop overhang, etc. Check to be sure there is enough room to open the door (consider walls, islands or other obstacles when measuring).
2. Refer to illustrations below to determine dimensions.
3. Allow 2.5" of clearance on hinge side of refrigerator when installing next to a wall where handle may make contact.
4. Allow 2" minimum clearance at rear for proper air circulation and water/electrical connections. Allow a 3/8" minimum clearance at top for ease of installation.
5. Ensure each door and entryway in the home is wide enough for the refrigerator to be moved through easily.

For optimal usage and ability to open refrigerator doors completely, do not install next to a wall.

Please note: The following dimensions and cutout information is for planning purposes only. For complete installation details, consult manual packed with product or download manual online at [samsung.com](http://samsung.com).



### Dimensions



\*Allow 3<sup>3</sup>/<sub>4</sub>" of clearance when installing next to a wall.

