

Brio[®]

740i

COUNTERTOP NUGGET ICE MAKER

Setup Manual

Model No.: IMCT740ISC



Table of Contents

| | |
|--|-----------|
| Safety Information | 3 |
| Intended Use | 4 |
| Product Features | 4 |
| Control Panel Description | 5 |
| Operational and Technical Specifications | 5 |
| Installation | 6 |
| Determine Installation Location | 6 |
| Install Ice Scoop and Drip Tray | 6 |
| Operation | 7 |
| Connecting the Ice Maker | 7 |
| Fill Side Water Tank and Run Clean Cycle | 7 |
| Make Ice | 8 |
| Adjust Ice Storage Bin Light | 8 |
| Open Ice Storage Bin Drawer | 8 |
| Refill Side Water Tank | 9 |
| Troubleshooting | 9 |
| Normal Operating Sounds | 10 |
| Cleaning and Maintenance | 10 |
| External Cleaning | 10 |
| Descale the Ice Maker | 11 |
| Warranty | 12 |

Safety Information

WARNING: To reduce risk of injury and property damage, you must read this entire guide before assembling, installing and operating the ice maker.

- For indoor use only. Keep the ice maker in a dry place away from direct sunlight. Do NOT use outdoors.
- Install and use only on a hard, flat and level surface.
- Do NOT place the ice maker in an enclosed space or cabinet.
- Do NOT operate ice maker in the presence of explosive fumes.
- Use only properly grounded outlets.
- Do not use an extension cord.
- Always grasp the plug and pull straight out from the outlet. Never unplug by pulling on the power cord.
- Do NOT use the ice maker if the cord becomes frayed or otherwise damaged. If the supply cord is damaged, it must be replaced by the manufacturer, its service agent or similarly qualified persons in order to avoid a hazard.
- To protect against electric shock, do NOT immerse cord, plug, or any other part of the ice maker in water or other liquids.
- Do NOT use ice maker with water that is microbiologically unsafe or of unknown quality.
- Ensure the ice maker is unplugged prior to cleaning.
- Unplug the unit to prevent unsupervised use by children.
- Service should be performed only by a certified technician.
- The appliance must not be cleaned by a water jet and is not suitable for installation in an area where a water jet could be used.
- Never turn the ice maker upside down or lean it more than 45°.

WARNING: Designed for use with 120V AC power only. DO NOT use with 220V outlet.

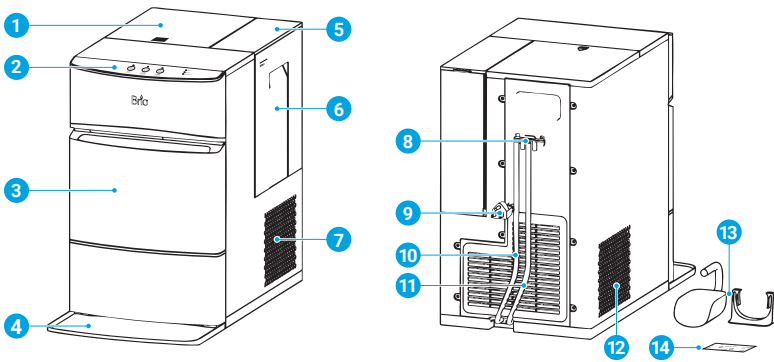
Intended Use

This ice maker is intended to be used in household and similar applications such as:

- Staff kitchen areas, offices, and other working environments
- Houses, apartments, and other residential-type environments
- Hotels, motels, bed-and-breakfasts, short-term rentals, and other hospitality-type environments
- Catering and similar non-retail applications

This ice maker is not intended for use by persons (including children) with reduced physical, sensory or mental capabilities, or lack of experience and knowledge, unless they have been given supervision or instruction concerning use of the appliance by a person responsible for their safety.

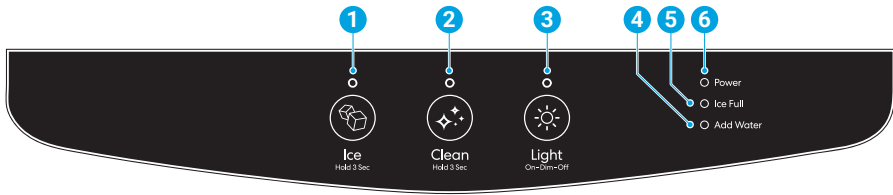
Product Features



| Part | Description |
|------|------------------------|
| 1 | Top lid |
| 2 | Control Panel |
| 3 | Ice storage bin drawer |
| 4 | Drip tray |
| 5 | Side water tank lid |
| 6 | Side water tank |
| 7 | Hot air outlet |

| Part | Description |
|------|------------------------------|
| 8 | Drain-tube plug bracket |
| 9 | Power cord |
| 10 | Top water tank drain tube |
| 11 | Bottom water tank drain tube |
| 12 | Cold air inlet |
| 13 | Ice scoop & holder |
| 14 | Extra adhesive tape |

Control Panel Description



| Part | Description |
|------|--------------------------|
| 1 | Ice button & indicator |
| 2 | Clean button & indicator |
| 3 | Light button & indicator |

| Part | Description |
|------|---------------------|
| 4 | Add Water indicator |
| 5 | Ice Full indicator |
| 6 | Power indicator |

Operational and Technical Specifications

| Model No. | IMCT740ISC |
|---|--|
| Current | 2.2 A |
| Rated Voltage / Frequency | 115 V / 60 Hz |
| Watts | 250 W |
| Ice Storage Capacity | 4.0 lb (1.81 kg) |
| Ice-Making Rate | 44 lb / 24 h |
| Initial Ice Production Time | 10-15 mins. |
| Side Water Tank Capacity | 0.68 gal / 2.57 L / 87 fl oz |
| Source Water Type | Potable Water |
| Operating Water Temperature | 50°F – 70°F (10°C – 21°C) |
| Net Weight | 28.7 lb (13 kg) |
| Product Dimensions with Drip Tray (WxHxD) | 10.04 x 16.53 x 18.9 in. (25.5 x 42 x 48 cm) |
| Noise (dBA) | 40 – 50 dB at approximately 1 meter distance |
| Power Cord Length | 72 in. (180 cm) |

Installation

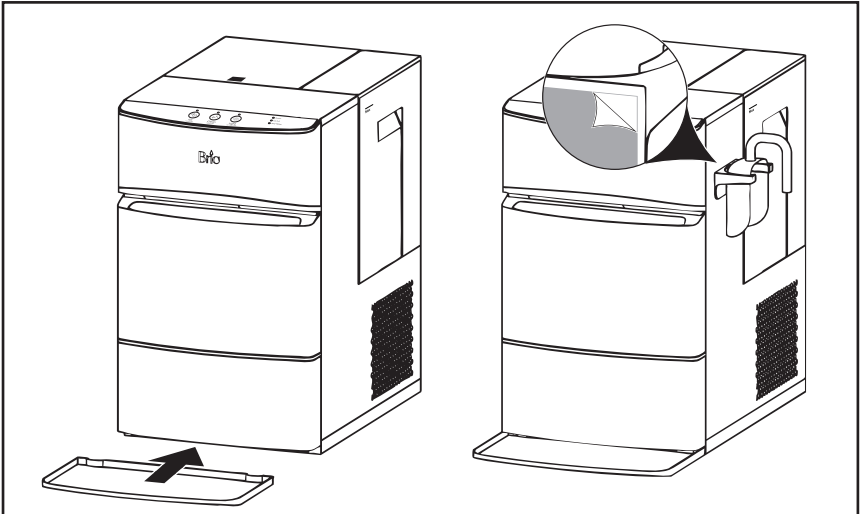
Determine Installation Location

1. After unboxing, thoroughly wipe down the ice maker interior, ice storage bin drawer, and side water storage tank with lukewarm water and a soft cloth.
2. Locate ice maker on a hard, level surface away from direct sunlight and other heat sources, such as stoves, furnaces, and radiators.
3. Position the back of the ice maker at least 6 in. (15 cm) from the wall, and the cold air intake side at least 8 in. (20 cm) from the wall. Insufficient airflow/ventilation space may negatively impact ice-making capability and product lifespan.

IMPORTANT: Ensure ice maker stands upright for at least one hour BEFORE plugging in to allow oil to settle back into the compressor. Failure to do so may damage compressor and void warranty.

Install Ice Scoop Holder and Drip Tray

1. To attach the ice scoop holder, select your preferred side of the ice maker. Ensure it's clean and dry.
2. Peel off the backing from the adhesive pad on the ice scoop holder. Firmly press the ice scoop holder against the side of the ice maker for 30 seconds.
3. Wait at least one hour before placing ice scoop in holder. This will allow the adhesive bond to reach its full strength.
4. Attach drip tray to small tabs at base of ice maker.



Operation

STEP 1: Connecting the Ice Maker

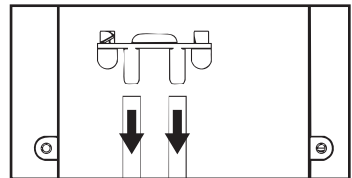
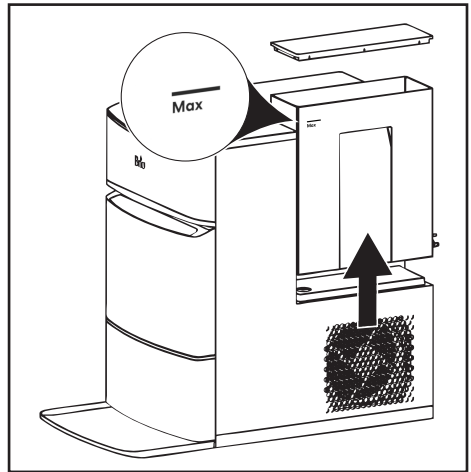
WARNING: Improper use of the grounding plug can lead to risk of electrical shock. Do not use if power cord is damaged.

1. For your safety this ice maker should be properly grounded. The power cord of this ice maker is equipped with a grounding plug that matches a standard grounded wall socket to minimize risk of electric shock.
2. Ice maker should be connected into a dedicated, properly installed grounded wall socket. Under no circumstances should the grounding device of the plug be tampered with. If you have any questions about power supply, contact a licensed electrician.
3. This ice maker requires a standard 115V / 60Hz power outlet with proper grounding device.

STEP 2: Fill Side Water Tank and Run Clean Cycle

IMPORTANT: We strongly recommend running the clean cycle before first use and if the ice maker has not been used for an extended period of time.

1. Remove side water tank by grasping handle and pulling straight up until tank disengages from latches.
2. Remove the side water tank lid and fill side water tank with potable water to the MAX line.
3. Reinstall lid. Align tank with side of ice maker, then slide down to engage latches. Move tank down until it sits securely on base.
4. Plug in the ice maker. All indicator lights will turn on and then off. The power indicator light will remain on.
5. Touch and hold the Clean button for 3 seconds. The indicator will illuminate, and the ice maker will run the clean cycle for approximately 20 minutes, after which the indicator will turn off. To stop the cleaning process at any time, touch and hold the Clean button for 3 seconds.
6. After the clean cycle ends, move the ice maker to the edge of a sink or other receptacle.
7. Lift up the drain-tube plug bracket to remove it from the back of the ice maker. Unplug the top and bottom tank drain tubes from bracket.



8. Position the open end of each tube into the sink or receptacle and allow all water to drain out.
9. After ice maker tanks have drained, reattach tubes to plug bracket, then reinstall bracket.

STEP 3: Make Ice

1. Fill the side water tank with potable water to the MAX line.

NOTE: Use of warmer water will slow down initial ice production. Optimal source water temperature is 50°F to 70°F (10°C to 21°C).

2. Touch and hold the Ice button for 3 seconds. The indicator will illuminate, indicating ice production has commenced. Touch and hold the button for 3 seconds at any time to stop the process.
3. Regularly check the water level in the side tank. If the water level falls too low, the ice maker will stop ice production and the Add Water indicator will illuminate. If this happens, refill the side tank, then touch and hold the Ice button for 3 seconds to restart the ice-making process.
4. When the Ice Full indicator illuminates, the ice storage bin drawer is full, and the ice maker will automatically stop making ice.

NOTE: The actual volume of ice produced can vary due to changes in environmental conditions, such as temperature, humidity, water quality, and pressure.

STEP 4: Adjust Ice Storage Bin Light

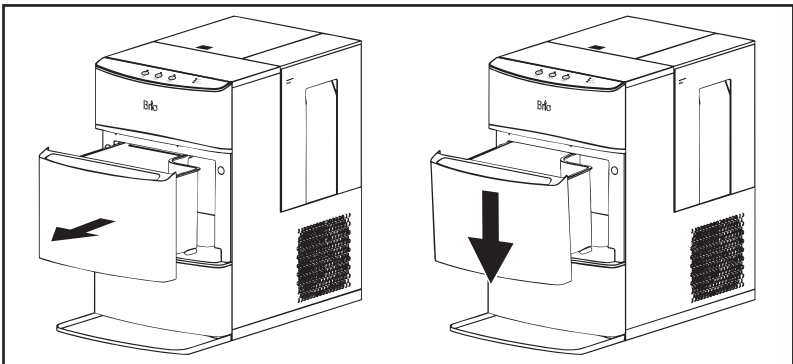
The ice storage bin drawer has an internal light that allows you to see ice status. To access:

1. Repeatedly touch the Light button to cycle through light options: bright, dim, and off.

STEP 5: Open Bin, Scoop Ice, and Enjoy

1. Grasp the handle and pull storage bin drawer straight out until it meets resistance. Allow drawer to rest at an angle on the front opening edge.
2. Use ice scoop to retrieve ice.
3. To close the storage bin drawer, grasp the handle, lift up drawer, and push back into ice maker.

NOTE: The storage bin drawer can be completely removed from the ice maker by pulling it out, then angling it upward to detach it from unit.



Refill Side Water Tank

When the Add Water indicator illuminates, the side water tank needs to be refilled:

1. Grasp side water tank handle and lift tank straight up until it tank disengages from latches.
2. Remove the tank lid and fill side water tank with potable water to the MAX line.
3. Reinstall the side tank lid. Align tank with side of ice maker, then slide down to engage latches. Move tank down until it sits securely on base. Touch and hold the Ice button for 3 seconds to restart ice-making process.

NOTE: Alternatively, side water tank can be refilled without removing. To do so, remove lid and fill tank with potable water to MAX line. Do NOT overfill so that water spills from tank into base.

Troubleshooting

| Problem | Probable Cause | Solution |
|--|---|---|
| “Add Water” indicator light is on. | Side tank water level is too low. | Refill the side water tank, then touch and hold Ice button for 3 seconds to restart the process. |
| “Ice Full” indicator light is on but there is no ice in the storage bin. | There is a possible obstruction in ice storage bin. | Clear any potential obstructions or clean the inner walls of the ice storage bin by wiping down interior. If you continue to experience a problem, simultaneously touch and hold the Ice and Clean buttons for 5 seconds. The unit will continue making ice for 60 minutes. The Ice icon will slowly blink during this process. |
| Power and Ice indicators are flashing. | Ambient temperature or water temperature is too warm. | Use ice maker in a room where the air temperature and water temperature are below 70°F (21°C). |
| Ice making is slow. | Hot air outlet is blocked. | Ensure there is at least 6 in. (15 cm) of clearance between the outlet and wall for proper ventilation. |
| | Water temperature in the top internal tank is too high. | Fill the side water tank with water that is between 50°F (10°C) and 70°F (21°C). |
| There is a water leak. | Back drain tubes are not installed properly. | Unplug drain tubes from drain-tube plug bracket, then plug in again, ensuring a secure fit. |
| Ice bin light is not on or is dim. | Ice bin light has not been turned on or is in “dim” mode. | To turn on or brighten ice bin light, repeatedly touch Light button to cycle through 3 modes: bright, dim, and off. |
| Control panel buttons are unresponsive. | There is moisture or residue on the control panel. | Unplug the unit, then wipe the control panel clean. |

Normal Operating Sounds

The ice maker may make sounds that are unfamiliar to you. Most are normal. Hard surfaces, like countertops, can amplify these sounds. Here are some of the normal sounds you may hear:

Buzzing: When the water pump first turns on, the ice maker will make a buzzing sound. After the ice maker is filled with water, the buzzing will diminish significantly.

Squeaking: When the ice maker needs to be defrosted, you may hear a light squeaking as ice builds up. If the squeaking becomes more frequent, run a clean cycle using citric acid crystals to dissolve mineral deposits. Mineral deposits can cause the ice maker to get stuck in the freeze cycle which causes frost to buildup.

Humming: The compressor is the motor of the ice maker, and you'll hear a low, steady humming while it's running.

Cleaning and Maintenance

External Cleaning

WARNING: Electric Shock Hazard. Always disconnect ice maker from power before performing any maintenance.

- Gently wipe external surfaces with a soft, clean cloth dipped in soapy water. Dry with a clean cloth.
- Remove ice storage bin drawer and set aside. Use a clean, damp cloth to wipe bottom water tank clean. DO NOT use soap or soapy water. Use fresh water only.

IMPORTANT: Ice storage bin drawer is NOT dishwasher safe. Manually clean with a gentle detergent and clean water. Rinse and dry thoroughly before reinstalling.

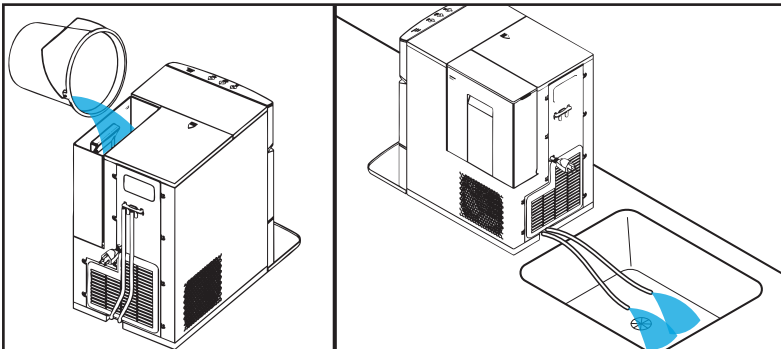
- From time to time, melted ice water will need to be drained from the bottom tank. To drain, detach bottom tank drain tube on back of ice maker and route open end into sink or receptacle. Allow water to drain out. Reinstall drain tube.
- If ice maker is not going to be used for an extended period of time, dispose of ice, drain all water tanks, and unplug unit. Run clean cycle before using again.

Descal the Ice Maker

Depending on hardness of source water, the ice maker should be descaled every 2 to 3 weeks to remove mineral buildup and optimize ice maker performance.

Gather the following supplies:

- 150g Citric acid crystals
 - 2.5 Liters water
1. Unplug ice maker, then empty all ice from ice storage bin drawer. Reinstall bin drawer if it's been removed.
 2. Move the ice maker to the edge of sink or other receptacle.
 3. Lift up the drain-tube plug bracket to remove it from the back of the ice maker. Unplug the top and bottom tank drain tubes from bracket.
 4. Position the open end of each tube into the sink or receptacle and allow all remaining water to drain out.
 5. After ice maker tanks have drained, reinstall bracket and tubes.
 6. Prepare descaling solution by combining citric acid crystals and water. Stir solution until crystals have completely dissolved.
 7. Remove side tank lid and pour descaling solution into side water tank. Reinstall lid. Plug in ice maker.
 8. Touch and hold the Clean button for 3 seconds and allow cleaning process to take place for approximately 5 minutes. This will distribute descaling solution throughout ice maker. Unplug ice maker again. Allow descaling solution to sit in ice maker for 12 to 18 hours.
 9. Plug in the ice maker. Touch and hold the Clean button for 3 seconds. Allow entire cleaning process to take place, approximately 20 minutes.
 10. When the Clean indicator turns off, the cleaning process is done. Drain all cleaning solution from tanks by following steps 3 through 5.
 11. Thoroughly rinse interior by repeating steps 7 to 10 twice more with fresh, clean water, and omitting 12 to 18 hour wait period.



Warranty

Brio (“Vendor”) warrants to the original purchaser of the Brio Ice Maker (the “Product”), and to no other person, that if the Product is assembled and operated in accordance with the printed instructions accompanying it, then for a period of one (1) year from the date of purchase, all parts in the Product shall be free from defects in material and workmanship. This Limited Warranty shall be limited to repair or replacement of parts, which prove defective under normal use and service and which Vendor shall determine in its reasonable discretion upon examination to be defective. To take advantage of this Limited Warranty, please follow these steps:

1. Please retain your sales slip or invoice, as Vendor may require reasonable proof of your date of purchase.
2. Contact Vendor’s Customer Service Department using the contact information listed below.
3. Return parts to Vendor, per Vendor’s instructions, at your cost and expense.
4. Upon receipt by Vendor, Vendor shall advise you in writing whether a defect covered by this Limited Warranty exists in any returned part and whether your claim has been approved or denied.
5. Upon Vendor’s approval of your claim, Vendor will replace such defective part without charge to you.

WHAT THIS LIMITED WARRANTY DOES NOT COVER: This Limited Warranty does not cover any failures or operating difficulties of the Product due to accident, abuse, misuse, alteration, misapplication, improper installation or improper maintenance or service by you or any third party, or failure to perform normal and routine maintenance on the Product, as set out in the User’s Manual. In addition, this Limited Warranty does not cover damages to the finish, such as scratches, dents, discoloration or rust after purchase.

This Limited Warranty is the only express warranty given on the Product and is in lieu of all other express warranties. Vendor disclaims all warranties for products that are purchased from seller other than authorized retailers or distributors. THIS LIMITED WARRANTY RESTRICTS THE DURATION OF ANY AND ALL IMPLIED WARRANTIES, INCLUDING WITHOUT LIMITATION, THE IMPLIED WARRANTY OF MERCHANTABILITY AND FITNESS FOR A PARTICULAR PURPOSE TO THE ONE (1) YEAR TERM OF THIS LIMITED WARRANTY. UPON THE EXPIRATION OF THE ONE (1) YEAR TERM OF THIS LIMITED WARRANTY, VENDOR DISCLAIMS ANY AND ALL IMPLIED WARRANTIES, INCLUDING WITHOUT LIMITATION THE IMPLIED WARRANTIES OF MERCHANTABILITY AND FITNESS FOR A PARTICULAR PURPOSE, THE PRODUCT BEING THUS SOLD AS-IS, WITH ALL FAULTS. FURTHER, VENDOR SHALL HAVE NO LIABILITY WHATSOEVER TO PURCHASER OR ANY THIRD PARTY FOR ANY SPECIAL, INDIRECT, PUNITIVE, INCIDENTAL, OR CONSEQUENTIAL DAMAGES. OTHER THAN THIS LIMITED WARRANTY, THERE ARE NO WARRANTIES WHICH EXTEND BEYOND THE DESCRIPTION ON THE FACE HEREOF. Vendor assumes no responsibility for any defects caused by third parties. This Limited Warranty gives you specific legal rights, and you may have other rights which vary from state to state. State law may also override statements in this Limited Warranty regarding the restriction on the duration of implied warranties. Some jurisdictions do not allow exclusion or limitation of special, incidental or consequential damages, or limitations on how long a warranty lasts, so the above exclusion and limitations may not apply to you.

Intentionally Left Blank

Intentionally Left Blank

Intentionally Left Blank



WWW.BRIOWATER.COM

©2026 Brio Water Technology, Inc.