



# RF70H30KE

SAMSUNG

Bespoke AI 30 cu. ft. 3-Door French Door Refrigerator  
with Zero Clearance Fit & In-Door Tall Water Dispenser



## Available Colors

-  Fingerprint Resistant  
Stainless Steel  
RF70H30KER
-  Fingerprint Resistant  
Matte Black Steel  
RF70H30KEE

## Design

- Zero clearance fit
- 30 cu. ft. Capacity
- Full Depth and Counter Depth Available
- In-Door Tall Water Dispenser
- Filtered Water and Ice Dispenser
- Fingerprint Resistant Finishes
- New Bar Handles
- ADA Compliant

## Technology

- Wi-Fi Enabled
- Power Cool & Power Freeze
- Door Alarm
- Water Filter Indicator

## Performance

- AI Energy Mode\*
- AI Precise Cooling
- AI Inverter Compressor
- Cubed Ice

\* Available on Android and iOS devices. A Wi-Fi connection and a Samsung account are required.

## Additional Specifications

### Refrigerator: 20.8 cu. ft.

- Ice Maker - Stores up to 5.1 lbs of ice
- 1 Slide-In Shelf, 3 Tempered Glass Spill-Proof Shelves
- Full-Width Drawer
- 2 Clear Drawers
- 6 Door Bins with 1 Gallon Door Bin
- Top LED Lighting

### Freezer: 8.7 cu. ft.

- LED Lighting

## Accessories

- Water Filter: HAF-QIN/EXP

## Rating



ENERGY STAR® rated:  
689 kWh/yr

## Dimensions

### Product Dimensions & Weight

Dimensions (WxHxD with hinges, handles and doors):  
35<sup>7</sup>/<sub>8</sub>" x 70<sup>1</sup>/<sub>4</sub>" x 34"

Dimensions (WxHxD without hinges and door):  
35<sup>7</sup>/<sub>8</sub>" x 68<sup>7</sup>/<sub>8</sub>" x 29<sup>1</sup>/<sub>2</sub>"

Dimensions (WxHxD with hinge and door, no handle):  
35<sup>7</sup>/<sub>8</sub>" x 70<sup>1</sup>/<sub>4</sub>" x 31<sup>15</sup>/<sub>16</sub>"

Weight: 302 lbs

### Shipping Dimensions & Weight

Dimensions: 37<sup>5</sup>/<sub>7</sub>" x 75<sup>5</sup>/<sub>8</sub>" x 34"

Weight: 313 lbs

## Warranty

One (1) Year Parts and Labor on Refrigerator  
Five (5) Years Parts and Labor on  
Sealed Refrigeration System Only\*  
Ten (10) Years Parts and Five (5) Years  
Labor on Digital Inverter Compressor

\*Compressor, evaporator, condenser, drier and connecting tubing.

## UPC

Colors	Model #	UPC Code
Fingerprint Resistant Stainless Steel	RF70H30KER	198957277894
Fingerprint Resistant Matte Black Steel	RF70H30KEE	198957277887



# RF70H30KE

# SAMSUNG

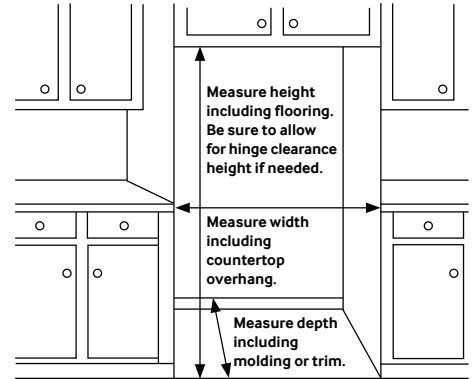
## Bespoke AI 30 cu. ft. 3-Door French Door Refrigerator with Zero Clearance Fit & In-Door Tall Water Dispenser

### Installation Specifications

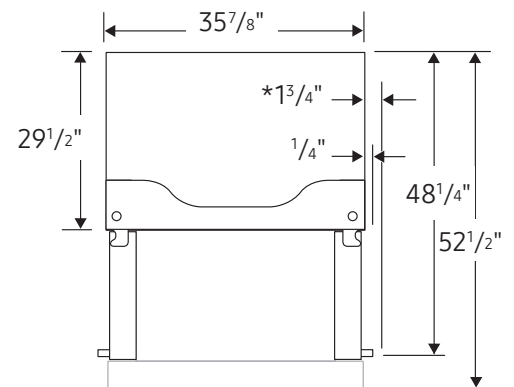
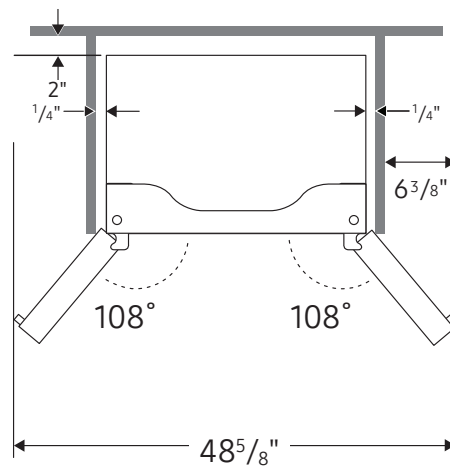
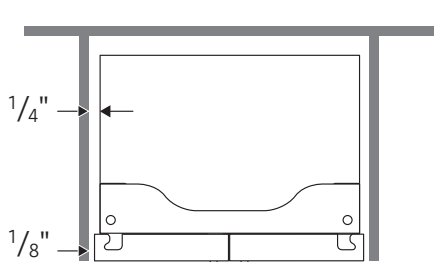
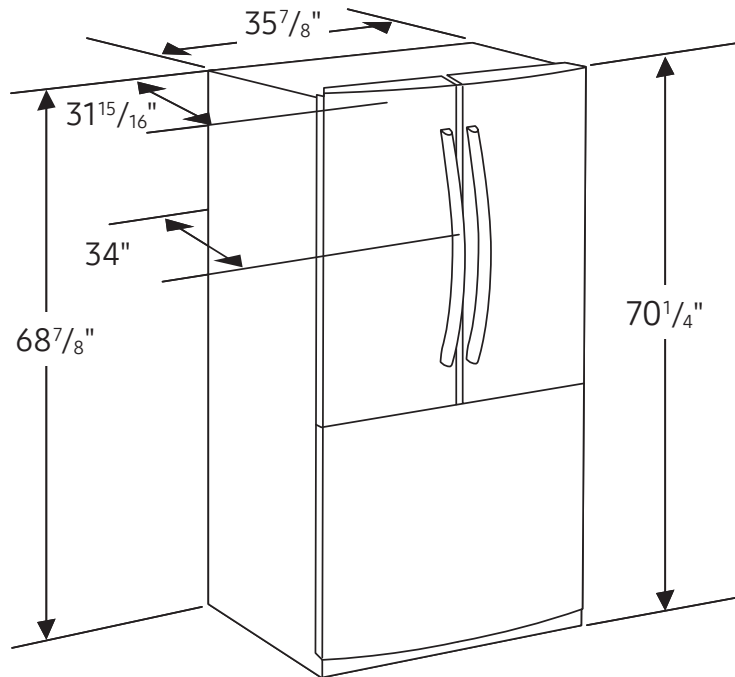
1. Measure the height, width and depth of the opening, making sure to include baseboards, molding tile, countertop overhang, etc. Check to be sure there is enough room to open the door (consider walls, islands or other obstacles when measuring).
2. Refer to illustrations below to determine dimensions.
3. Allow 1/8" (4mm) of clearance on hinge side of refrigerator when installing next to a wall where handle may make contact.
4. Allow 2" minimum clearance at rear for proper air circulation and water/electrical connections. Allow a 3/8" minimum clearance at top for ease of installation.
5. Ensure each door and entryway in the home is wide enough for the refrigerator to be moved through easily.

For optimal usage and ability to open refrigerator doors completely, do not install next to a wall.

Please note: The following dimensions and cutout information is for planning purposes only. For complete installation details, consult manual packed with product or download manual online at [samsung.com](http://samsung.com).



### Dimensions



\*Allow 3 3/4" of clearance to enable doors to open 90° when installed next to a wall.

