

User manual

● *Blueair*



SCAN FOR SUPPORT

Blue Pure

Mini Max 2 Pack

Product name	Model number
Blue Pure Mini Max	3131000100

- Blueair purifiers are electrical appliances for indoor use only, take the necessary precautions to reduce the risk of fire, electric shock or injury.
- Cleaning and user maintenance shall not be done by children without supervision.
- Always disconnect the appliance from the power supply before maintenance.
- If your Blueair appliance is found to be defective, we will replace it with the same or a similar model at no cost, per the warranty terms. Please use caution attempting repairs yourself, as this presents the danger of electrical shock or injury.
- Ensure that the power cable and the power plug are not at risk of getting damaged.
- If the appliance is damaged or malfunctions, turn it off, disconnect it from the power supply and contact Blueair.
- The power plug must be firmly inserted in the power socket.
- When disconnecting the unit from the power supply, do not pull on the power cord, pull on the power plug.
- Use the power cable provided with your Blueair air purifier to plug directly and firmly in to an appropriate, electrical outlet.
- Do not use an extension cord or a power strip. Do not use the included power cord for anything else but the appliance.
- Do not allow objects to enter or block the air inlets and air outlets as this can cause electric shock or damage the appliance.
- Do not place any objects on top of or directly against the appliance.
- Do not sit on, stand, climb onto or hang from the appliance.

- Keep the appliance, including the power cable, at a safe distance from heated surfaces and open fire.
- Keep the appliance and power plug away from water and other liquids.
- Keep the appliance and power plug away from chemicals such as pesticides and deodorants.
- Place the appliance on the floor. The appliance must be placed on a stable surface.
- Do not use the appliance outdoors or in wet environments such as bathrooms, laundry rooms or pool areas.
- This appliance is not intended for use by persons (including children) with reduced sensory or mental capabilities, or lack of experience and knowledge, unless they have been given supervision or instruction concerning use of the appliance by a person responsible for their safety.
- Children should be supervised to ensure that they do not play with the appliance.
- To reduce the risk of electric shock, this equipment has a polarized plug (one blade is wider than the other). This plug will fit in a polarized outlet only one way. If the plug does not fit fully in the outlet, reverse the plug. If it still does not fit, contact qualified personnel to install the proper outlet. Do not alter the plug in any way.
- This product complies with the maximum allowable concentration of ozone of 0.050 parts per million by volume (ppmv) in a 24-h period.
- The energy efficiency of this ENERGY STAR certified model is measured based on a ratio between the model's CADR for Smoke and the electrical energy it consumes, or CADR/ Watt.



Regulatory information

CAUTION: Changes or modifications to this unit not expressly approved by the party responsible for compliance could void the user's authority to operate the equipment.

NOTE: This equipment has been tested and found to comply with the limits for a Class B digital device, pursuant to Part 15 of the FCC Rules. These limits are designed to provide reasonable protection against harmful interference in a residential installation. This equipment generates, uses and can radiate radio frequency energy and, if not installed and used in accordance with the instructions, may cause harmful interference to radio communications.

However, there is no guarantee that interference will not occur in a particular installation. If this equipment does cause harmful interference to radio or television reception, which can be determined by turning the equipment off and on, the user is encouraged to try to correct the interference by one or more of the following measures:

- Reorient or relocate the receiving antenna.
- Increase the separation between the equipment and receiver.
- Connect the equipment into an outlet on a circuit different from that to which the receiver is connected.
- Consult the dealer or an experienced radio/TV technician for help.

This device complies with Part 15 of the FCC Rules. Operation is subject to the following two conditions:

- This device may not cause harmful interference.
- This device must accept any interference received, including interference that may cause undesired operation.

The Class B digital apparatus complies with Canadian ICES-003.

Product map

A User interface

B Air outlet

D Noise shield

C Fan motor

E Particle & carbon filter

F Washable fabric pre-filter

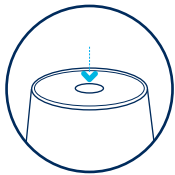
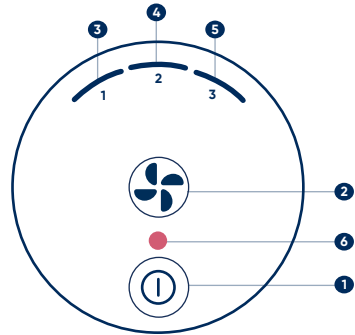


Getting started

- 1 ON/Standby button
- 2 Fan Speed button

Indicators

- 3 1 Night mode (lowest speed setting)
- 4 Speed 2
- 5 Speed 3
- 6 Filter replacement



Two button control

Press the **ON/Standby button** to turn the air purifier.

Adjust the mode and the fan speed using the **Fan Speed button**.

This air purifier has a total of three fan speeds - **Night mode** being the lowest/most silent one, Speed three being the highest one.

Night mode

Lowest fan speed and fully dimmed lights.

1,2,3

Fan speeds 1-2-3

Fan speed levels which you can manually set by pressing the Fan Speed button on the interface.

How to use tips

Filter reset

Extra long press Fan Speed button for about 15 seconds (until all the LEDs of the interface light up). Then release.

After replacing the filter, it is required to manually conduct filter reset on the appliance. If done correctly, the red filter replacement indicator will blink three times and then disappear.



15 seconds

Enable/disable Child lock

Long press On/Standby button for about 5 seconds (until all the LEDs of the interface light up and blink once). Then release.

When the Child lock is on the air purifier will continue to operate but the speed/mode button will be locked.

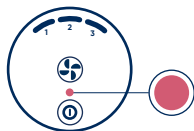


5 seconds

Maintenance information

Important! Turn the air purifier off and disconnect the air purifier from the power supply before maintenance.

Changing your filter



When your air purifier's indicator light turns red, it's time to change the main filter. This typically occurs at 6 months of active operation

Step 1

Turn off the air purifier and unplug it. Rotate the top counter-clockwise to unlock, then lift up to remove it.



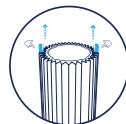
Step 2

Remove the fabric pre-filter and the noise shield.



Step 3

Use the filter handles to pull out the old filter and replace with new. Make sure to remove plastic wrapping before inserting the new filter in the appliance.



Step 4

Place the noise shield back on top of the filter. Pull up the fabric pre-filter over the filter and the noise shield. (Please ensure that the leather tag is on the upper side of the fabric pre-filter.)



Step 5

Twist the top back on and plug in the air purifier.



Step 6

Important! Turn the air purifier back on and reset the filter indicator by pressing down the Fan Speed button for 15 seconds. (until all the LEDs of the interface light up for the second time and blink once). Then release.

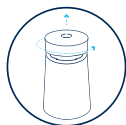


Cleaning your washable pre-filter

Clean your pre-filter regularly when you see dust or dirt. Vacuum the exterior of the fabric with a soft brush attachment. If the pre-filter requires a deeper clean, wash according to the instructions on the pre-filter's label. Hang to dry.

Step 1

Turn the air purifier off and unplug it. Rotate the top counter-clockwise to unlock and remove it.



Step 2

Remove the fabric pre-filter from the noise shield and main filter.



Step 3

Wash according to instructions on the fabric pre-filter's label.



Step 4

Pull the clean pre-filter back over the noise shield and main filter.



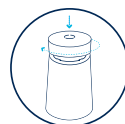
Step 5

Please ensure that the leather tab of the pre-filter is on the upper part.



Step 6

Push the top cylinder down, rotate it clockwise to lock it.



Disposal and recycling

This air purifier should be recycled as electronic waste. If you have any questions regarding the disposal of this air purifier, please contact your local waste management for best way to recycle.

Troubleshooting

Issue	Potential Cause	Try this
There is a red circle on my air purifier's panel.	It is time to change the main filter.	<ol style="list-style-type: none">1. Change filter according to the instructions in this guide.2. Reset the filter life timer: press down the fan speed button until the red light disappears (15 seconds).
My air purifier is making too much noise.	Air purifiers that are set on a high-speed level produce more noise because they function at faster rates.	Set a lower fan speed. The air purifier should be quieter.
	The plastic sealing is still on the filter.	<ol style="list-style-type: none">1. Remove the main filter according to the instructions in this guide.2. Make sure that the plastic cover is removed from the filter.
I cannot change the fan speed modes on my air purifier.	If the main filter or pre-filter are clogged or dirty, the engine might not get sufficient airflow, which may result in increased noise levels.	Unplug your air purifier and vacuum the air purifier and its fabric pre-filter from the outside with a soft brush attachment. Clean the fabric pre-filter in the washing machine. Replace the main filter when your filter indicator turns red.
	The Child lock function is activated, which means that the fan speed modes can only be controlled from the Blueair app.	To deactivate the Child lock: Press the ON/Standby button on your air purifier for 5 seconds or, deactivate the Child lock from the Blueair App.
My indoor air quality is not improving.	Indoor air quality is polluted. Air quality sensors are dusty and showing incorrect levels.	<ol style="list-style-type: none">1. Disconnect the power cable from the wall outlet and wait approximately 30 seconds2. Make sure that there are no objects or dust around the air quality sensors at the back of the air purifier.3. Reconnect the power cable.4. Press the power button If the air quality does not improve with the use of the air purifier and with ventilation, please contact us.
My air purifier does not start or fails to operate.	The power cable is not fully inserted.	<ol style="list-style-type: none">1. Turn off and unplug your air purifier.2. Make sure there are no objects or dust on and around the air purifier.3. Ensure the top of the air purifier is correctly attached to the bottom.4. Plug the power cable firmly into an outlet.5. Press the On button and select a speed level.6. Make sure the LED indicators on the air purifier are lighting up.7. Make sure the airflow is working (feel with your hand that air is coming out from the air outlet). If your device still fails to operate, please contact us.
The LEDs on my air purifier are too bright.	The LEDs are on the maximal brightness setting.	Several LED dimming options are available on your air purifier: Select the Night mode on your air purifier, or set your LED brightness preferences from your air purifier according to the instructions in this guide.

For more information and troubleshooting tips, please check the Support page on www.blueair.com