



**NEVERCLOG® 3-IN-1
JUICER – SLICER – SHREDDER**
JC152 Series | Owner's Guide



IMPORTANT SAFETY INSTRUCTIONS

PLEASE READ ALL INSTRUCTIONS BEFORE USE • FOR HOUSEHOLD USE ONLY

	Read and review instructions for operation and use.
	Indicates the presence of a hazard that can cause personal injury, death, or substantial property damage if the warning included with this symbol is ignored.
	For indoor and household use only.
When using electrical appliances, basic safety precautions should always be followed, including the following:	

WARNING

To reduce the risk of injury, fire, electrical shock, or property damage, basic safety precautions must always be followed, including the following numbered warnings and subsequent instructions. Do not use appliance for other than intended use.

- 1 Read all instructions prior to using the appliance and its accessories.
- 2 Carefully observe and follow all warnings and instructions. This unit contains electrical connections and moving parts that potentially present risk to the user.
- 3 **DO NOT** submerge the motor base or control panel in water or other liquids.
- 4 **DO NOT** spray motor base or control panel with any liquid. Take inventory of all contents to ensure you have all parts needed to properly and safely operate your appliance.
- 5 Always make sure pulp spout is securely in place before motor is turned on. **DO NOT** unfasten parts while juicer is in operation.
- 6 Be sure to turn the appliance off after each use. Make sure the motor stops completely before disassembling.
- 7 Turn the appliance **OFF**, then unplug the appliance from the outlet when not in use, before assembling or disassembling parts, and before cleaning. To unplug, grasp the plug by the body and pull from the outlet. **NEVER** unplug by grasping and pulling the flexible cord.
- 8 Before use, wash all parts that may contact food. Follow washing instructions covered in this instruction manual.
- 9 Before each use, inspect auger for damage. If auger is bent or damage is suspected, contact SharkNinja to arrange for replacement.
- 10 **DO NOT** use this appliance outdoors. It is designed for indoor household use only.
- 11 This appliance has a polarized plug (one prong is wider than the other). To reduce the risk of electric shock, this plug will fit in a polarized outlet only one way. If the plug does not fit fully in the outlet, reverse the plug. If it still does not fit, contact a qualified electrician. **DO NOT** modify the plug in any way.
- 12 **DO NOT** operate any appliance with a damaged cord or plug, or after the appliance malfunctions, or is dropped or damaged in any manner. This appliance has no user-serviceable parts. If damaged, contact SharkNinja for servicing.
- 13 This appliance has important markings on the plug blade. The entire supply cord is not suitable for replacement. If damaged, please contact SharkNinja for service.
- 14 Extension cords should **NOT** be used with this appliance.

IMPORTANT SAFETY INSTRUCTIONS

PLEASE READ ALL INSTRUCTIONS BEFORE USE • FOR HOUSEHOLD USE ONLY

- 15 To protect against the risk of electric shock, **DO NOT** submerge the appliance or allow the power cord to contact any form of liquid.
- 16 **DO NOT** allow the cord to hang over the edges of tables or counters. The cord may become snagged and pull the appliance off the work surface.
- 17 **DO NOT** allow the unit or the cord to contact hot surfaces, including stoves and other heating appliances.
- 18 **ALWAYS** use the appliance on a dry and level surface.
- 19 **DO NOT** allow children to operate this appliance or use as a toy. Close supervision is necessary when any appliance is used near children.
- 20 This appliance is **NOT** intended to be used by people with reduced physical, sensory, or mental capabilities, or lack of experience and knowledge, unless they have been given supervision or instruction concerning use of the appliance by a person responsible for their safety.
- 21 **ONLY** use attachments and accessories that are provided with the product or are recommended by SharkNinja. The use of attachments, including canning jars, not recommended or sold by SharkNinja may cause fire, electric shock, or injury.
- 22 **DO NOT** put your fingers or other objects into the juicer opening while it is in operation. If food becomes lodged in opening, use the tamper or another piece of fruit or vegetable to push it down. When this method is not possible, turn the motor off and disassemble juicer to remove the remaining food.
- 23 Keep hands, hair, and clothing out of the container when loading and operating.
- 24 During operation and handling of the appliance, avoid contact with moving parts.
- 25 **DO NOT** use the appliance if the rotating sieve is damaged.
- 26 **DO NOT** operate the appliance without the pulp container in place.
- 27 **DO NOT** microwave container or accessories provided with the appliance.
- 28 **NEVER** leave the appliance unattended while in use.
- 29 **DO NOT** juice hot liquids. Doing so may result in pressure buildup and steam exposure that can pose a risk of the user being burned.
- 30 **NEVER** operate the appliance without lids and caps in place. **DO NOT** attempt to defeat the interlock mechanism. Ensure attachments are properly installed before operation.
- 31 Before operation, ensure all utensils are removed from container. Failure to remove utensils can cause container to shatter and potentially result in personal injury and property damage.
- 32 **DO NOT** attempt to remove the feed chute chamber from the motor base while the auger is still spinning. Allow the appliance to come to a complete stop before removing attachments.
- 33 If the appliance is overloaded, the unit will temporarily disable the motor. Wait approximately 2 minutes before using again.
- 34 **DO NOT** juice hot ingredients.
- 35 Remove the seeds and pits from fruits such as mangoes or plums, as well as peels and tough skins from fruits such as oranges, lemons, and limes, as they could damage the unit.
- 36 **DO NOT** add water to the feed chute while the unit is operating to clean the unit.
- 37 **DO NOT** submerge the motor base or control panel in water or other liquids.
- 38 **DO NOT** spray motor base or control panel with any liquid.
- 39 **DO NOT** attempt to sharpen auger.
- 40 Turn off the appliance and unplug the motor base before cleaning.
- 41 **DO NOT** add frozen fruit, frozen vegetables, or ice to the juicer.
- 42 Consumers with sensitivity to pulp may wish to strain their juice as a precaution.
- 43 **ALWAYS** make sure dispense spout is securely in place before motor is turned on when using food prep attachment. **DO NOT** unfasten parts while unit is in operation.

- 44 Before each use, inspect blade for damage. If blade is bent or damage is suspected, contact SharkNinja to arrange for replacement.
- 45 **DO NOT** put your fingers or other objects into the food prep attachment feed chute while it is in operation. If food becomes lodged in the opening, use the tamper to push it down. When this method is not possible, turn the motor off and disassemble to remove the remaining food.
- 46 **DO NOT** put your finger or other objects into the food prep attachment dispense chute while it is in operation. If food becomes lodged while dispensing, turn the unit off and use a small utensil to take ingredients out of dispense chute. When this method is not possible, turn the motor off and disassemble to remove the remaining food.
- 47 **DO NOT** use the appliance without a large bowl to catch food prep outputs.
- 48 **DO NOT** food prep hot ingredients. Doing so may result in pressure buildup and steam exposure that can pose a risk of the user being burned.
- 49 **DO NOT** attempt to remove the food prep chamber from the motor base while the blade is still running. Allow the appliance to come to a complete stop before removing attachments.
- 50 **DO NOT** attempt to sharpen blades.
- 51 **DO NOT** add ice when using food prep attachment.
- 52 **DO NOT** operate machine with food prep attachment if the dispense chute is not engaged as this also secured the blade into system.

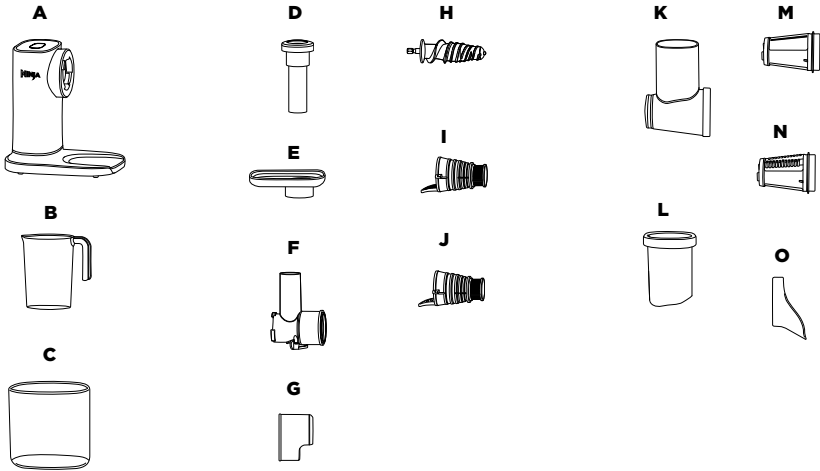
SAVE THESE INSTRUCTIONS

PARTS

- A Motor Base (power cord not shown)
- B Juice Jug
- C Pulp Container

- JUICER ONLY**
- D Tamper
 - E Food Tray
 - F Feed Chute Chamber with Anti-Drip Lever
 - G Pulp Spout
 - H Auger
 - I Gray Filter (less pulp)
 - J Orange Filter (lots of pulp)

- FOOD PREP ONLY**
- K Food Prep Chamber
 - L Food Prep Pusher
 - M Food Prep Slicer
 - N Food Prep Thick Shredder
 - O Food Prep Dispense Chute



BEFORE FIRST USE

IMPORTANT: Review all warnings at the beginning of this Owner’s Guide before proceeding.

NOTE: All attachments are BPA free and dishwasher safe.

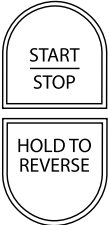
- 1 Remove all packaging materials from the unit.
- 2 Wash parts in warm, soapy water, then thoroughly rinse and air-dry all parts.
- 3 Wipe control panel with a soft cloth. Allow it to dry completely before using.

ORDERING REPLACEMENT PARTS

To order additional parts and attachments, visit ninjaaccessories.com.

FEATURES

USING THE CONTROL PANEL

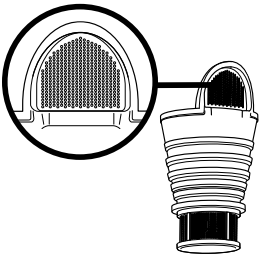


START/STOP
Press once to start continuous running up to 12 minutes; press again to stop.

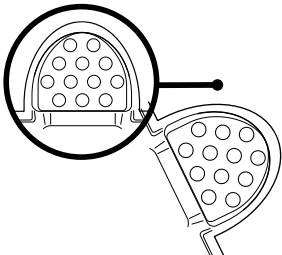
REVERSE
If the feed chute chamber becomes blocked or ingredients are not processing, press and hold **REVERSE**. There will be a beep and a brief pause, then the juicing auger or food prep blade will rotate in the opposite direction. Release **REVERSE** to stop. Repeat as needed. Press **START/STOP** to resume normal operation.

USING THE FILTERS FOR PULP CONTROL

Control the amount of pulp by choosing the appropriate filter.



LESS PULP
Use the Gray filter with the finest mesh for juice with less pulp.

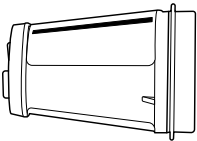


LOTS OF PULP
Use the Orange filter with the largest mesh for juice with lots of pulp.

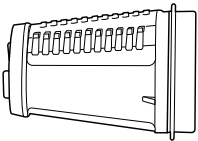
NOTE: For best results, we recommend using the **Orange (Lots of Pulp) filter** when processing soft fibrous fruits like pears, berries, seeded melons, and pineapple.

USING THE FOOD PREP BLADES

Control your size and shape by choosing the appropriate blade.



FOOD PREP SLICER
Get knife-level, uniform slices in seconds. The precision-ground blade guarantees consistent thickness for faster, even results. Just load, press, and plate.



FOOD PREP THICK SHREDDER
Turn dense, thick ingredients into flawless, wide ribbons with one press—no pre-cutting needed. The oversized shred blades create perfectly balanced strands for every recipe.

NOTE: For best results, we recommend using **cold ingredients** when processing to ensure the most uniform slicing and shredding.

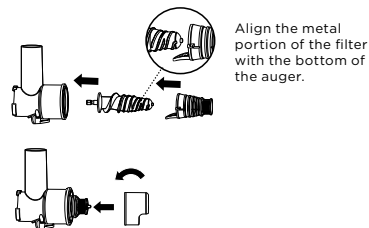
USING THE JUICING FILTERS

IMPORTANT:

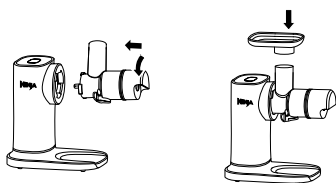
- Review all warnings before proceeding.
- **DO NOT** add frozen fruits and vegetables or ice to the unit.

NOTE: If the feed chute chamber becomes blocked or ingredients are not processing, press and hold **REVERSE**. There will be a beep and a brief pause, then the auger will rotate in the opposite direction. Release **REVERSE** to stop. Repeat as needed. Press **START/STOP** to resume normal operation.

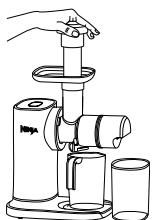
- 1 Plug in motor base and place on a clean, dry, level surface such as a countertop or table.
- 2 Insert the auger into the feed chute chamber, then attach the desired filter onto the auger, with the metal portion of the filter on the bottom of the auger.
- 3 Attach the pulp spout to the feed chute chamber by installing at an angle on top of the filter, then turning counterclockwise to lock in place. Ensure Ninja is facing up.



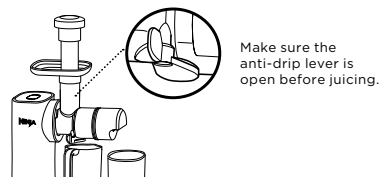
- 4 Install the assembled feed chute chamber on the motor base at an angle, then turn counterclockwise until it clicks into place.
- 5 Install the food tray on the top of the feed chute.



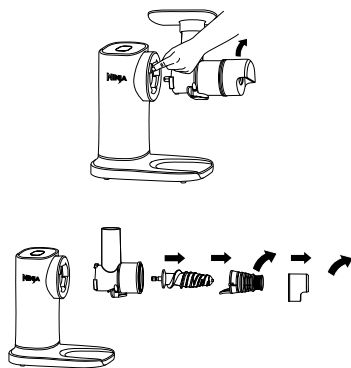
- 6 Place the pulp container under the pulp spout, then place the juice jug under the anti-drip lever on the feed chute chamber.



- 7 Select **START/STOP**, then gradually add ingredients to the feed chute. For best results, allow juicer to process each ingredient before adding more to the feed chute. Use the tamper to push ingredients down through the feed chute, as needed.
- 8 When juicing is complete, select **START/STOP**, then close the anti-drip lever. Stir juice and serve.



- 9 To disassemble, press and hold the **RELEASE** button while turning the feed chute chamber clockwise and removing it from motor base.
- 10 Remove the pulp spout from the feed chute chamber by turning clockwise. Remove the filter and auger by gently pulling them out of the feed chute.
- 11 Unplug the unit when finished. If moving the unit, grab from the bottom of the base. Refer to the Care & Maintenance section for cleaning and storage instructions.



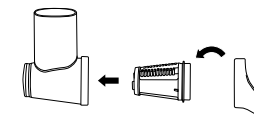
USING THE FOOD PREP ATTACHMENTS

IMPORTANT:

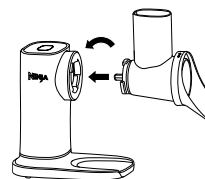
- Review all warnings before proceeding.
- **DO NOT** press down fingers past the chute entry, use included pusher.

NOTE: If the feed chute chamber becomes blocked or ingredients are not processing, press and hold **REVERSE**. There will be a beep and a brief pause, then the blade will rotate in the opposite direction. Release **REVERSE** to stop. Repeat as needed. Press **START/STOP** to resume normal operation.

- 1 Plug in motor base and place on a clean, dry, level surface such as a countertop or table.
- 2 Insert the desired blade into the food prep chamber by dropping in and connecting slots until you hear a click into place.
- 3 Attach the dispense chute onto food prep chamber by turning counterclockwise to lock in place. Use indicators on dispense chute to assist. Dispense chute locks blade into place, ensure it is properly locked.



- 4 Install the assembled food prep chamber on the motor base at an angle, then turn counterclockwise until it clicks into place.



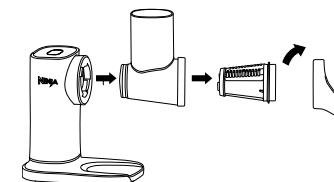
- 5 Place the pulp container or a wide bowl under the dispense chute to receive prepped ingredients.



- 6 Select **START/STOP**, then gradually add ingredients into the feed chute. For best results, allow unit to process each ingredients before adding more to the chute. Use the pusher to push ingredients down through the chute.
- 7 When prepping is complete, select **START/STOP**.



- 8 To disassemble, press and hold the **RELEASE** button while turning the feed chute chamber clockwise and removing it from motor base.
- 9 Remove the dispense chute from the food prep chamber by turning clockwise. Remove the blade by gently pulling them out of food prep chamber.
- 10 Unplug the unit when finished. If moving the unit, grab the bottom of the base. Refer to the Care & Maintenance section for cleaning and storage instructions.



CARE & MAINTENANCE

IMPORTANT: DO NOT attempt to clean the unit by adding water to the feed chute while attached to the motor base.

CLEANING

- **Hand-Washing**

Separate all parts and wash in warm, soapy water with a soft cloth. Thoroughly rinse and air-dry all parts.

- **Dishwasher**

All parts, except the motor base, are dishwasher safe.

- **Motor Base**

Unplug the motor base before cleaning. Wipe with a clean, damp cloth.

STORING

For cord storage, wrap cord with hook-and-loop fastener near the back of the motor base.

DO NOT wrap the cord around the bottom of the base for storage.

When moving the unit, lift from the bottom of the motor base. Store the auger and filter assembled in the feed chute chamber with the pulp spout installed. Place the juice jug into the pulp container for easy storage. Store the blade in the food prep chamber with dispense spout installed. Additional blades and filters can nest inside juice jug..

OVERLOADING THE UNIT

This unit features a unique safety system that prevents damage to the motor and drive system should you inadvertently overload the motor. If the unit is overloaded, the motor will be temporarily disabled. Should this occur, wait 2 minutes, then press **START/STOP** to start the unit.

If your unit needs servicing, please call Customer Service at 1-877-646-5288. So we may better assist you, please register your product online at registeryourninja.com and have the product on hand when you call.



To watch videos on how to use and clean the
NINJA® NEVERCLOG® 3-IN-1 JUICER - SLICER - SHREDDER
scan the QR code.

TROUBLESHOOTING GUIDE

⚠ WARNING: To reduce the risk of shock and unintended operation, turn power off and unplug unit before troubleshooting.

The REVERSE program is not operating.

- After pressing and holding **REVERSE**, there will be a beep and a brief pause, then the juicing auger or food prep blade will rotate in the opposite direction. Release **REVERSE** to stop. Repeat as needed. Press **START/STOP** to resume normal operation.

There is a buildup of pulp in the feed chute chamber.

- There may be a clog in the pulp spout. Press **START/STOP** to stop the unit, then remove the pulp spout. Separate all parts and wash in warm, soapy water with a soft cloth. Thoroughly rinse and air-dry all parts.
- For best results, allow juicer to process each ingredient before adding more to the feed chute. Use the tamper to push ingredients down through the feed chute, as needed.

The unit stopped working and is beeping.

- The unit was overloaded with ingredients. Wait 2 minutes then press **START/STOP** to start the unit.

Can I juice fruit with seeds and pits in it?

- No. Seeds and pits should be removed from the fruit prior to juicing. For example, remove the seeds from cherries and the pit from a plum.

Can I juice frozen fruits and vegetables or add ice?

- No, do not use frozen fruit, frozen vegetables, or ice with this unit.

The unit makes a squeaking noise when I juice certain ingredients.

- When the auger is breaking down fibrous ingredients like apples, celery, herbs, and leafy greens, the unit will sometimes make this noise. This is normal and not a cause for concern.

There is clogging in the pulp filter.

- When juicing solely fibrous ingredients, such as pineapple, you may have to clear the filter of pulp more often, especially when using the Less Pulp Filter.

The unit is producing less juice than I anticipated based on the amount of produce I used.

- With this juicer, you can expect 1 lb. of produce to yield approximately 8 oz. of juice.
- Depending on the seasonality of ingredients, you may experience lower juice and pulp yield when using the Less Pulp Filter. If this occurs, try using the Lots of Pulp Filter.

ONE (1) YEAR LIMITED WARRANTY

NJA_1_YR_IB_LMTD_WRNTY_US_ENG

The One (1) Year Limited Warranty applies to purchases made from authorized retailers of **SharkNinja Operating LLC**. Warranty coverage applies to the original owner and to the original product only and is not transferable.

SharkNinja warrants that the unit shall be free from defects in material and workmanship for a period of one (1) year from the date of purchase when it is used under normal household conditions and maintained according to the requirements outlined in the Owner's Guide, subject to the following conditions and exclusions:

What is covered by this warranty?

1. The original unit and/or non-wearable parts deemed defective, in SharkNinja's sole discretion, will be repaired or replaced up to one (1) year from the original purchase date.
2. In the event a replacement unit is issued, the warranty coverage ends six (6) months following the receipt date of the replacement unit or the remainder of the existing warranty, whichever is later. SharkNinja reserves the right to replace the unit with one of equal or greater value.
California Residents Only: The One (1) Year Limited Warranty period begins on the original date of delivery or pickup.

What is not covered by this warranty?

1. Normal wear and tear of wearable parts (such as blending vessels, lids, cups, blades, blender bases, removable pots, racks, pens, etc.), which require regular maintenance and/or replacement to ensure the proper functioning of your unit, are not covered by this warranty. Replacement parts are available for purchase at ninjaaccessories.com.
2. Any unit that has been tampered with or used for commercial purposes.
3. Damage caused by misuse, abuse, negligent handling, failure to perform required maintenance (e.g., failure to keep the well of the motor base clear of food spills and other debris), or damage due to mishandling in transit.
4. Consequential and incidental damages.
5. Defects caused by repair persons not authorized by SharkNinja. These defects include damages caused in the process of shipping, altering, or repairing the SharkNinja product (or any of its parts) when the repair is performed by a repair person not authorized by SharkNinja.
6. Products purchased, used, or operated outside North America.

How to get service

If your appliance fails to operate properly while in use under normal household conditions within the warranty period, visit ninjakitchen.com/support for product care and maintenance self-help. Our Customer Service Specialists are also available at 1-877-646-5288 to assist with product support and warranty service options, including the possibility of upgrading to our VIP warranty service options for select product categories. So we may better assist you, please register your product online at registeryourninja.com and have the product on hand when you call.

SharkNinja will cover the cost for the customer to send in the unit to us for repair or replacement. A fee of \$20.95 (subject to change) will be charged when SharkNinja ships the repaired or replacement unit.

How to initiate a warranty claim

You must call 1-877-646-5288 to initiate a warranty claim. You will need the receipt as proof of purchase. We also ask that you register your product online at registeryourninja.com and have the product on hand when you call, so we may better assist you. A Customer Service Specialist will provide you with return and packing instruction information.

How state law applies

This warranty gives you specific legal rights, and you also may have other rights that vary from state to state. Some states do not permit the exclusion or limitation of incidental or consequential damages, so the above may not apply to you.



REGISTER YOUR PURCHASE



registeryourninja.com



Scan QR code using mobile device

RECORD THIS INFORMATION

Model Number: _____

Serial Number: _____

Date of Purchase: _____
(Keep receipt)

Store of Purchase: _____

TECHNICAL SPECIFICATIONS

Voltage: 120V-, 60Hz

Power: 150 Watts

SharkNinja Operating LLC

US: Needham, MA 02494

CAN: Ville St-Laurent, QC H4S 1A7

1-877-646-5288

ninjakitchen.com

Illustrations may differ from actual product. We are constantly striving to improve our products, therefore the specifications contained herein are subject to change without notice.

NINJA and NEVERCLOG are registered trademarks of SharkNinja Operating LLC.

This product may be covered by one or more U.S. patents.
See sharkninja.com/patents for more information.

© 2025 SharkNinja Operating LLC

JC152Series_IB_MP_Mv1



@ninjakitchen