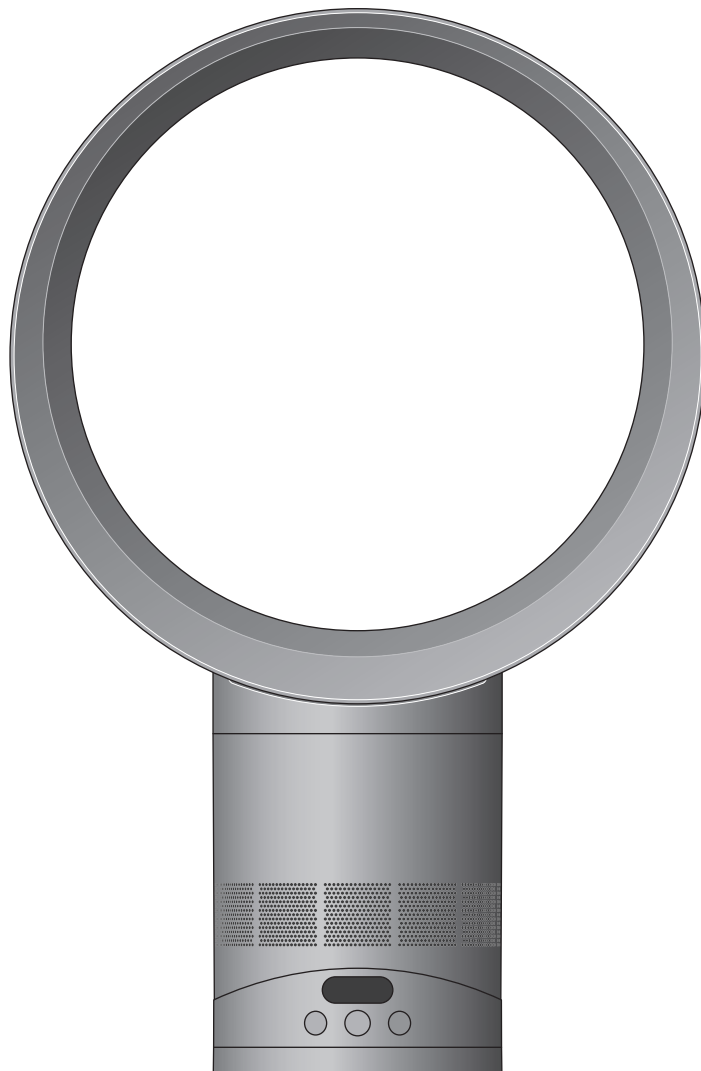


CF 1

cool

User manual

SV12 JN.00000 PN.000000-00-00
00.00.00 VERSION NO.01



Contents

In the box

Assembling your machine

Product controls

Connecting to the MyDyson™ app
via Bluetooth®

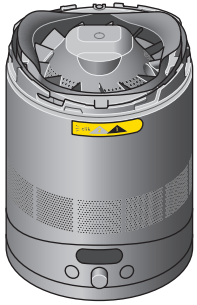
Connecting to your smart home

Cleaning your machine

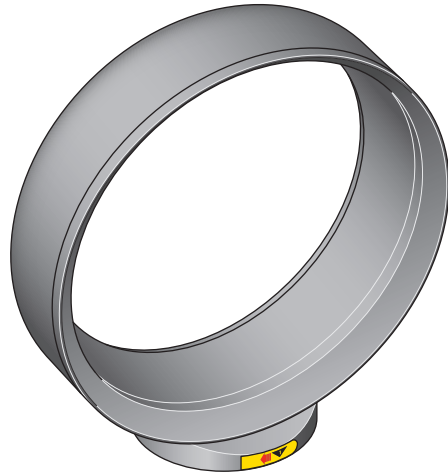
Clearing blockages

dyson

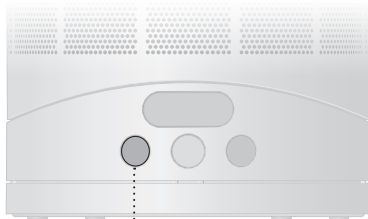
In the box



Fan base



Loop amplifier



Sleep mode button



Power button and Fan speed dial

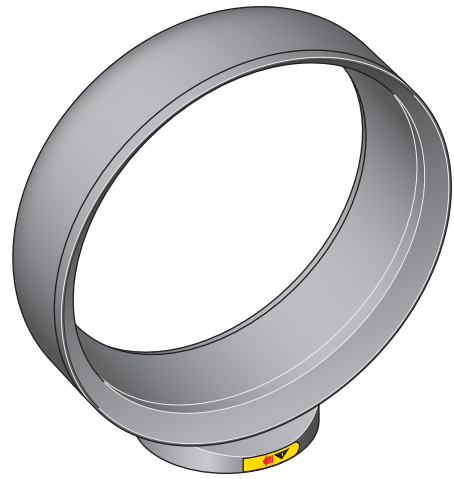


Oscillation mode button

Assembling your machine

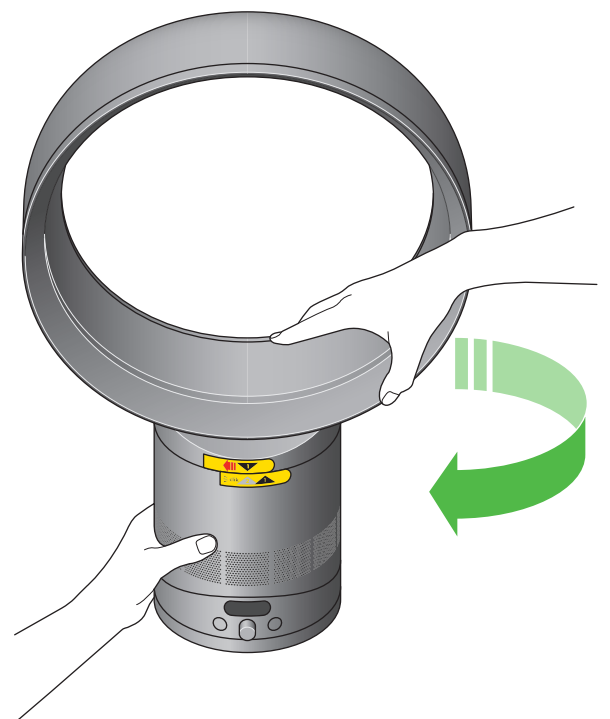
Step 1

Lower the loop amplifier onto the base, aligning the arrows.



Step 2

Once aligned, turn the loop amplifier clockwise to lock.



Product controls

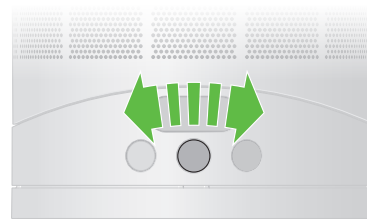
Power

Press the combined Power button and Fan speed dial, situated in the middle of the controls, to start/stop your machine.



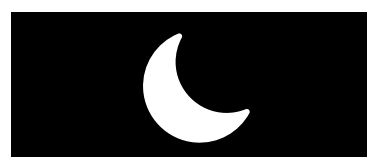
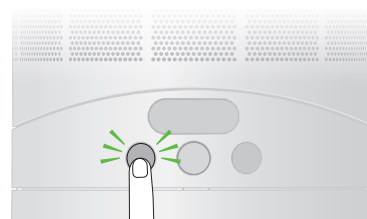
Fan speed control

Turn the combined Power button and Fan speed dial to the right to increase fan speed, turn it to the left to decrease fan speed.



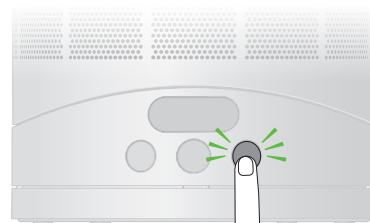
Sleep mode

Press the button on the left to activate Sleep mode. Your fan will blow air at a lower speed and with its LCD screen dimmed.



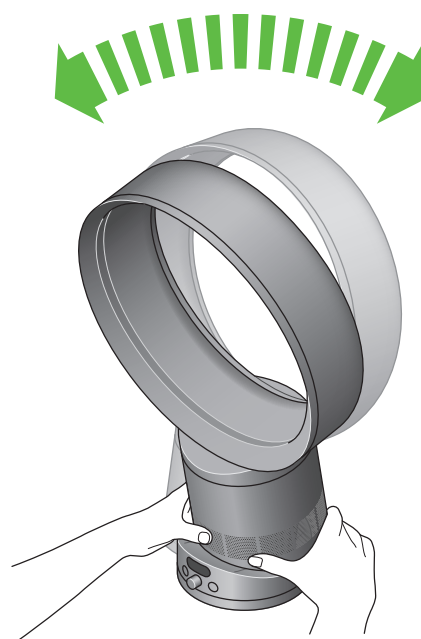
Oscillation

Press the button on the right to cycle through oscillation angles.
Choose from 10, 40 or 70 degrees.



Manual tilt

Carefully hold the base and the top of the air loop amplifier. Tilt forward or backward for the required airflow angle.



Connecting to the MyDyson™ app via Bluetooth®

Take full control with the MyDyson™ app and access step-by-step setup and support, control how and when your fan operates, and automatically keep up to date with the latest software updates.

Download the MyDyson™ app from the App Store or Google Play.

Open the app and follow the on-screen instructions to create a new account.



Apple, the Apple logo, and Siri are trademarks of Apple Inc. App Store is a service mark of Apple Inc. Google Play, the Google Play logo, Google Assistant are trademarks of Google LLC.



Android and the Android logo are trademarks of Google LLC.

The Android robot is reproduced or modified from work created and shared by Google and used according to terms described in the Creative Commons 3.0 Attribution License.



Connecting to your smart home

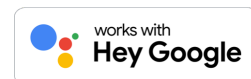
Using Amazon Alexa

Ask Alexa to enable the Dyson skill, to control your Dyson fan. And set a routine that automates how your machine works with other devices in your home.



Using Google Assistant

Control all of your connected fans with Google or set a routine to automate how your machine works with other devices in your home. Just say "Hey Google" to get started.



Using Siri

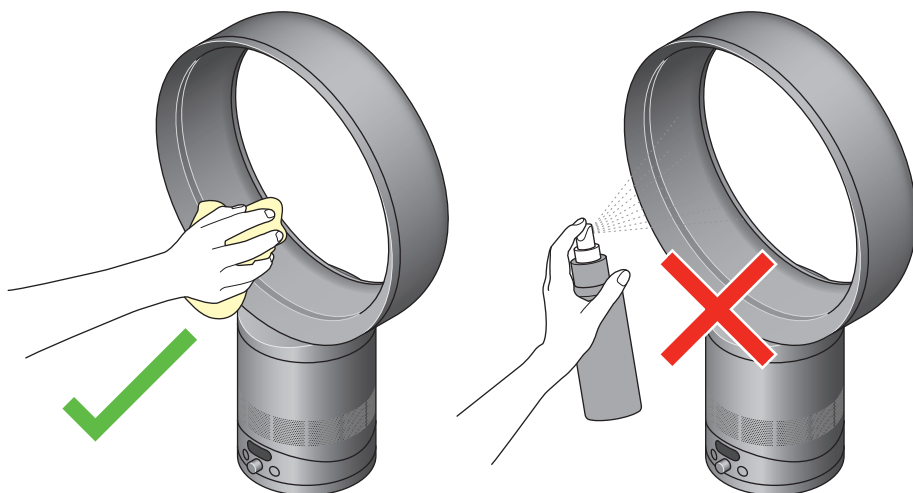
Connect your Dyson machines to Siri Shortcuts and you'll be able to control them with your voice, on your Apple device.



Amazon, Alexa, Amazon Echo and all related logos are trademarks of amazon.com, Inc. or its affiliates.

Cleaning your machine

Unplug your machine before cleaning. To clean, wipe with a dry or damp cloth. Do not use detergents or polishes to clean the appliance.



Clearing blockages

Look for blockages in the air inlet holes. Use a soft brush to remove debris. Look for blockages in the small aperture inside the loop amplifier. Use a soft brush to remove debris.

