

Shark **STAINFORCE**

CORDLESS STAIN-DESTROYING SYSTEM

HX105



Scan QR code to view
HOW-TO VIDEOS



CONTENTS

Important Safety Instructions3

What’s Included..... 4

Getting Started..... 5

How To Clean 6

Tool Guide7

Member Bonus & Emptying The Dirty Water Tank..... 8

Full Cleaning..... 9

Self-Wash Cycle..... 10

Shark Cleaning Solution11

Charging Your StainForce.....12

Troubleshooting13

Three (3) Year Limited Warranty14

TECHNICAL SPECIFICATIONS

HX100 Series: 14.4V DC
RECORD THIS INFORMATION

Model Number: _____

Date of Purchase: _____
(Keep receipt)

Store of Purchase: _____

IMPORTANT SAFETY INSTRUCTIONS
FOR HOUSEHOLD USE ONLY

READ CAREFULLY BEFORE USE. SAVE THESE INSTRUCTIONS. FOR HOUSEHOLD USE ONLY.
READ ALL INSTRUCTIONS BEFORE USING THIS SPOT AND STAIN CLEANER

⚠ WARNING TO REDUCE THE RISK OF FIRE, ELECTRIC SHOCK, INJURY, OR PROPERTY DAMAGE:
This appliance is not intended for use by persons (including children) with reduced physical, sensory or mental capabilities, or lack of experience and knowledge, unless they have been given supervision or instruction concerning use of the appliance by a person responsible for their safety. Children should be supervised to ensure that they do not play with the appliance.

General Safety and Usage Instructions

- 1. **DO NOT** put any object into openings. **DO NOT** use with any opening blocked; keep free of dust, lint, hair, and anything that may reduce air flow.
 - 2. To reduce the risk of fire or electric shock due to internal component damage, use ONLY Shark formula, as intended for use with this appliance.
 - 3. The areas around where you are cleaning may become wet. Use care to avoid slipping and falling.
 - 4. **DO NOT** refill the solution sprayer with any different chemicals. Use ONLY Shark formula.
 - 5. **DO NOT** operate if any exterior surface of the appliance is wet. If the appliance is wet, dry with a cloth before use.
 - 6. Before each use, carefully inspect each part for damage or wear. If a part is damaged or worn out, immediately discontinue use. **DO NOT** use if any part is damaged or if stain cleaner is not working as it should, has been dropped, left outdoors, or submerged in water.
 - 7. **DO NOT** immerse or spray water on the body of the stain cleaner. To clean the surface, wipe with a dry cloth.
 - 8. **DO NOT** use without the dirty water tank, tools, or filters in place.
 - 9. Use only identical Shark® replacement parts. Only use Shark branded filters and accessories.
 - 10. **DO NOT** place the appliance on uneven surfaces.
 - 11. **DO NOT** use in the following areas:
 - a. Poorly lit areas.
 - b. Outdoor areas.
 - c. Spaces that are enclosed and may contain explosive or toxic fumes or vapors (lighter fluid, gasoline, kerosene, paint, paint thinners, mothproofing substances, or flammable dust).
 - 12. Keep hair, loose clothing, fingers, and all parts of the body away from openings and moving parts.
 - 13. **DO NOT** store appliance where temperatures reach freezing levels to avoid damaging internal parts.
 - 14. **FIRST AID:** Keep out of reach of children. Causes skin and serious eye irritation. If in eyes, rinse continuously with water for minutes. Remove contact lenses if present and easy to do so. Continue rinsing. If on skin, wash with soap and water. If skin and eye irritation persists, seek medical attention.
 - 15. Please recycle container. Dispose of contents/container with licensed waste disposal site in accordance with the requirements of the local waste disposal authority. **DO NOT** dispose in drains or watercourses in concentrate form.
 - 16. This product is for use on carpets and upholstery only. **DO NOT** use on hard surfaces like wood, laminate, tile, metal, etc.
 - 17. Shark Cleaning Solution contains hydrogen peroxide, which has the potential to damage some materials like unsealed wood, tile, metal, and electronics. Use caution when spraying chemicals or storing chemical bottles. Only spray on upholstered or carpeted surfaces as intended.
 - 18. Always conduct a chemical spot test on a discreet or hidden area of the material before cleaning.
 - 19. Ensure the unit is powered off before carrying the appliance. **DO NOT** carry the appliance with your finger on the power button.
 - 20. To prevent unintentional starting, ensure the appliance is powered off before picking it up or carrying it. **DO NOT** carry the appliance with your finger on the power switch.
 - 21. Use extra care when cleaning on stairs.
- Electrical Safety Instructions**
- 22. **DO NOT** modify the plug provided with the appliance. If the plug does not fit fully into the outlet, reverse the plug. If it still does not fit, contact a qualified electrician.
 - 23. **DO NOT** force the plug into the outlet or try to modify it.

- 24. **DO NOT** pull cord, close door on cord, or wrap it around sharp edges or corners. To unplug, grasp the plug, not the cord. Keep cord away from heated surfaces.
 - 25. To reduce the risk of shock and unintended operation, turn off and unplug stain cleaner before any adjustment, cleaning, maintenance, or troubleshooting.
 - 26. **DO NOT** handle plug or stain cleaner with wet hands.
 - 27. If plugging unit into extension cord, ensure cord is no more than 15 meters long to prevent damage to the motor.
 - 28. For use only with charger YINLI YLXA-T180050 or GANGQI GQ20A-180050-AU. Use of an incorrect charger may result in no charging, and/or unsafe conditions.
 - 29. The battery is the power source for the appliance. **DO NOT** carry the appliance with your finger on the button. **DO NOT** charge appliance with the power on.
- Battery Safety**
- 30. Battery should not be stored at temperatures below 37.4° F (3° C) or above 104° F (40° C) to maintain long term battery life.
 - 31. Under abusive conditions, liquid may be ejected from the battery. Avoid contact with this liquid, as it may cause irritation or burns. If contact occurs, flush with water. If liquid contacts eyes, seek medical help.
 - 32. The battery pack is non-serviceable. Call Customer Service with any questions and concerns.
 - 33. **DO NOT** expose appliance to fire or temperature above 266° F (130° C) as it may cause explosion.
 - 34. **DO NOT** use a battery pack or appliance that is damaged or modified. Damaged or modified batteries may exhibit unpredictable behavior resulting in fire, explosion or risk of injury.
 - 35. **DO NOT** charge battery at temperatures below 40°F (5°C) or above 104°F (40°C). Charging improperly or at temperatures outside of the specified range may damage the battery and increase the risk of fire.
 - 36. Store the appliance indoors. **DO NOT** use or store it below 37.4°F (3°C). Ensure the appliance is at room temperature before operating.

Chemical and Material Safety

- 37. **DO NOT** spray solution on your skin or in your eyes.
- 38. **DO NOT** use to pick up:
 - a. Large objects
 - b. Hard or sharp objects (glass, nails, screws, or coins)
 - c. Large quantities of dust (e.g., drywall dust)
 - d. Smoking or burning objects (hot coals, cigarette butts, or matches)
 - e. Flammable or combustible materials (lighter fluid, gasoline, or kerosene)
 - f. Toxic materials (chlorine bleach, ammonia, or drain cleaner)
- 39. **DO NOT** use or extract vinegar in this device. The combination of vinegar and other substances may produce peracetic acid, which can accelerate rusting and cause damage to internal components.

Child Safety

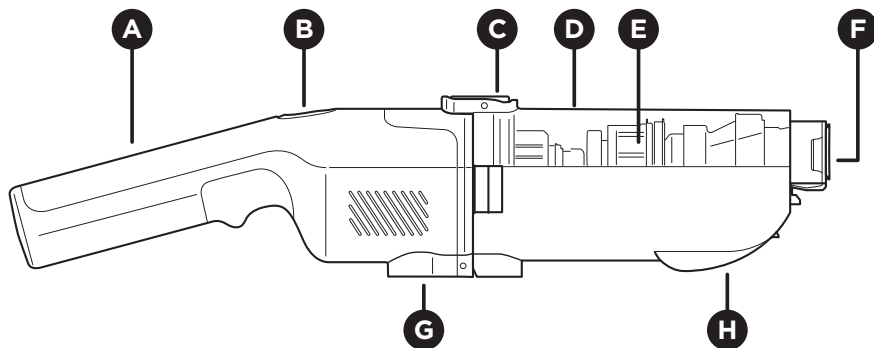
- 40. **DO NOT** allow appliance to be used by children or as a toy. Close supervision is necessary when used near children.
- 41. This appliance can be used by persons with reduced physical, sensory, or mental capabilities or lack of experience or knowledge if they have been given supervision or instruction concerning use of the appliance in a safe way and understand the hazards involved. Cleaning and user maintenance shall not be done by children.

Pet Safety Instructions

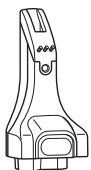
- 42. Allow all treated surfaces to dry completely before reintroducing pets.
- 43. Any treated surface should be allowed to dry completely, and ventilate areas as needed before allowing pets access to the treated areas.
- 44. **DO NOT** use near pets or in occupied pet enclosures.

WHAT'S INCLUDED

- | | | |
|-----------------------------------|--------------------------------|------------------------------------|
| A Handle | G Charging Port | M 2x Replacement Filters |
| B Power Button | H Quick-Pour Door | N Reusable Solution Sprayer |
| C Dirty Water Tank Release | I Stain Eliminator Tool | O Shark Refill Cartridge |
| D Dirty Water Tank | J Crevice Tool* | P Storage Caddy |
| E Water Separator Motor | K Charger | |
| F Hair Filter | L Rubber Bristle Strip | |



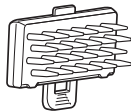
I



J



O



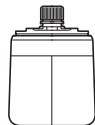
L



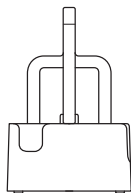
M



N

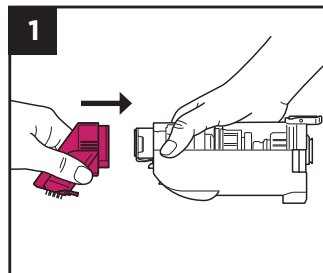


O

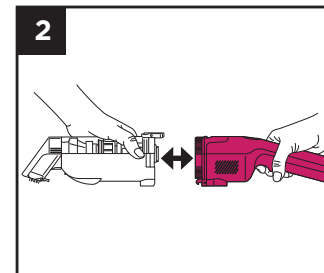


P

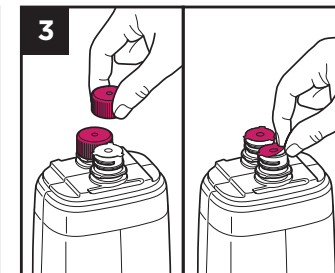
GETTING STARTED



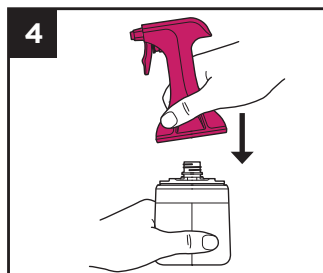
Align the Stain Eliminator Tool with the end of the Dirty Water Tank. Insert the tool onto the tank until it clicks into place.



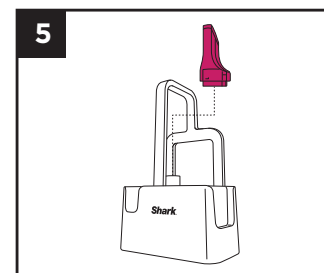
Align the handle with the other end of the tank, then insert the handle until it clicks securely into place.



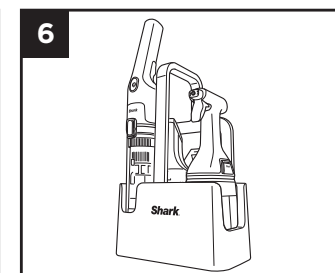
Twist off both caps on the refill cartridge, then peel off the foil seals.



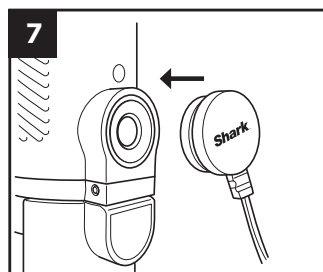
Press the sprayer down over the openings on top of the refill cartridge. Make sure it clicks securely into place.
Note: The sprayer only fits one way.



Place the Crevice Tool onto the Tool Post on the inside of the caddy.



Store StainForce and the refill cartridge in the caddy.
Note: The StainForce can only be stored in the caddy with the Stain Eliminator Tool attached.



Charge the unit fully before use. To start charging, open the charging port cover and plug in the charger. It can take up to 4 hours to charge completely.

NOTE: *Not all accessories come with all units. Tools may vary by model. For additional accessories available, please visit sharkclean.com

NOTE: Charge battery completely after every use for best results and maximum runtime next time.

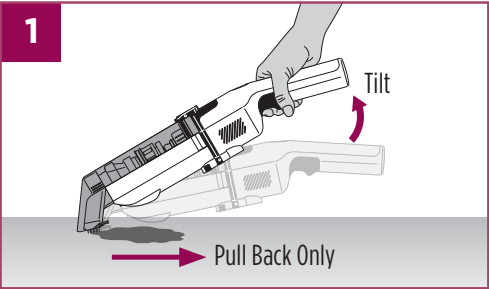
HOW TO CLEAN

Preparing for Use:

- 1. Before first use, make sure to charge the unit completely. See Charging Your StainForce section for instructions.
- 2. StainForce is designed for cleaning carpets and upholstery only. Do not use on hard surfaces.
- 3. Before spraying a dry stain, vacuum the surface with a traditional vacuum cleaner to remove loose dirt.
- 4. Always follow instructions below for cleaning wet and dry stains.

NOTE: Clean water is not required to use this product.

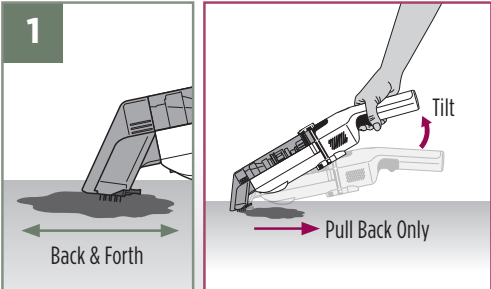
WET STAIN



1. EXTRACT SPILL

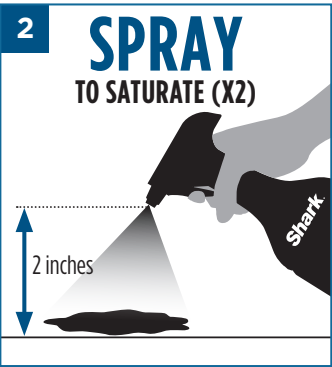
First, suction up the liquid spill to prevent spreading the stain.

DRY STAIN



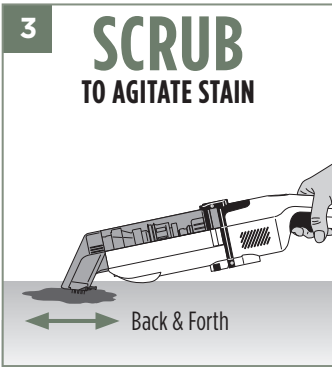
1. SCRUB STAIN & EXTRACT

Scrub stain back and forth using bristles or fins, then, turn on unit, tilt handle, and drag backwards to extract dry debris.



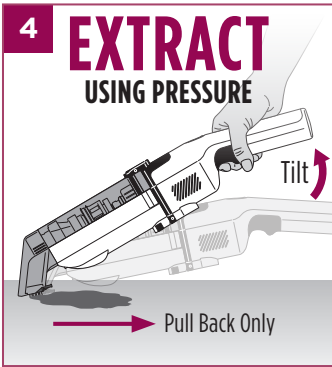
2. SPRAY

Spray cleaning solution to over-saturate, 2 inches from the stain.
Let soak for a few minutes and spray again. Apply at least 2 layers of solution.



3. SCRUB

Lay bristles flat on the surface & scrub the stain back and forth firmly.
See bristle information → next page.



4. EXTRACT

For best suction be sure to tilt up (as shown) and apply pressure. Slowly pull backwards to extract the solution. **Pull back only.**

LET DRY. REPEAT STEPS 2-4 UNTIL STAIN FULLY FADES.

TIPS AND TOOLS

Cleaning Tips:

- 1. Scrub ink stains carefully to avoid spreading. Extract the stain immediately after spraying.
- 2. For older and tougher stains, let the spray solution sit for 5 minutes before extracting.
- 3. If a difficult stain was not removed, wait 24 hours and repeat the stain cleaning process. Very old or tough stains may require multiple attempts to fully clean.

Scan QR code to view HOW-TO VIDEOS.



TOOL GUIDE

	Stain Eliminator Tool	Crevice Tool
Tough Stains	✓	✓
Delicate Stains	✓ (With Hair-Gripping Fins)	
Tight Corner Stains		✓
Hair Pickup	✓ (With Hair-Gripping Fins)	
Dry Stains	✓	✓
Wet Stains	✓	✓
Self-Wash Cycle	✓	
Storage	Always on the unit	Tool post only

Included tools may vary by model*.

REVERSIBLE BRISTLES

BRISTLES
Deep cleaning & agitation.

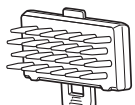
FINS
For delicate or hairy surfaces.

TIPS:

- Use bristles for deep cleaning and to agitate stains.
- Use Hair-Gripping Fins on delicate or hairy surfaces to prevent tangling.
- For hair removal, use short backward strokes to avoid clumping.

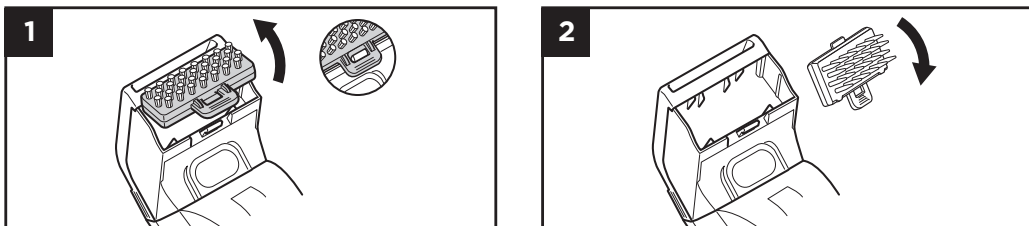
MEMBER BONUS

RUBBER BRISTLE STRIP



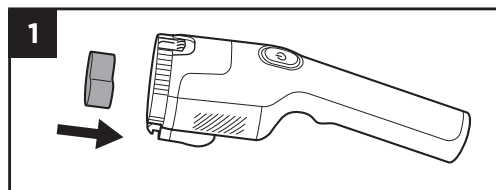
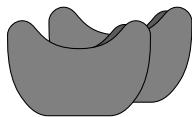
Rubber bristle strip are easy to attach to your existing Stain Eliminator Tool; offers gentler clean on delicate surface.

HOW TO USE WITH YOUR EXISTING STAIN ELIMINATOR TOOL



2X REPLACEMENT FILTERS

Rinse the foam filter after every use and replace yearly, or sooner if it shows signs of wear or significant buildup.



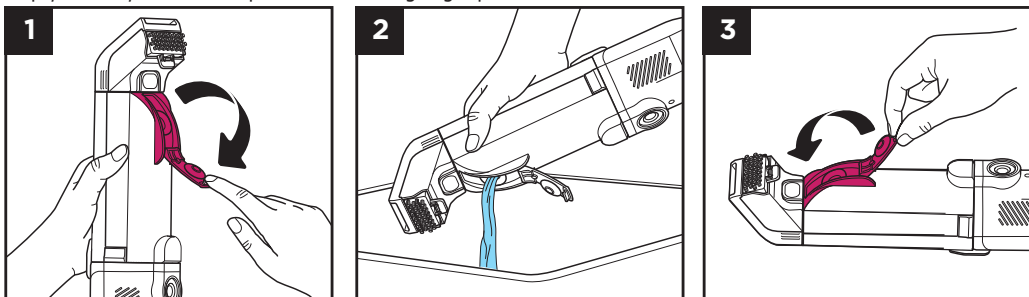
EMPTYING THE DIRTY WATER TANK

IMPORTANT:

1. Always empty and clean the unit after each use. DO NOT store the unit with dirty water in the tank, as this could cause odor, mold, or mildew.
2. After maintenance, please make sure each part is installed correctly or your unit may not work properly.
3. Always charge the unit after every use.

Using the Quick-Pour Door

Designed to enable continuous cleaning with minimal stoppage, the quick-pour door allows you to quickly and easily empty the dirty water tank—perfect for handling large spills and stains.



Align the unit with the quick-pour door facing up. Pull down the door to open.

Carry the unit to a sink or drain and pour the dirty water out through the door.

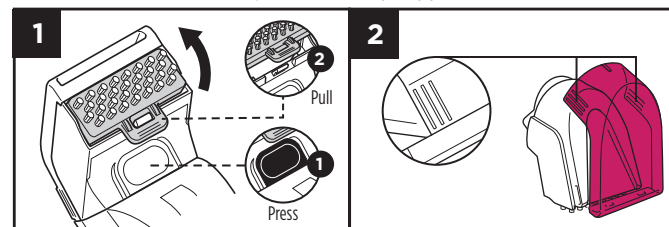
When dirty water is completely drained, close the door.

NOTE: DO NOT submerge the handle in liquid. Please allow all the parts to air-dry fully before reassembly.

FULL CLEANING

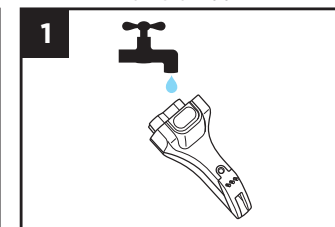
CLEANING THE TOOLS

STAIN ELIMINATOR TOOL



Press the release button on the tool to detach it from the water tank. Pull the tab to remove the bristles from the tool.

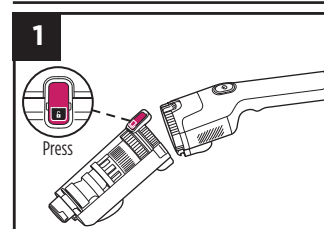
CREVICE TOOL



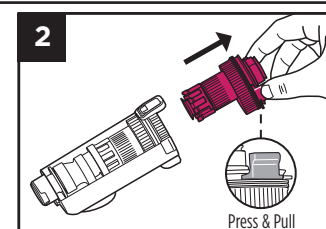
Rinse off the Crevice Tool with running water, then allow it to air-dry.

Press both sides of the tool to detach the window. Rinse off the bristles, tool, and window with water.

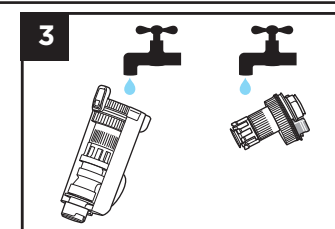
CLEANING THE DIRTY WATER TANK



Press the release button to detach the tank from the handle.

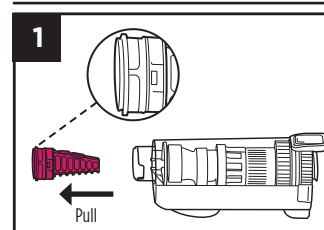


To remove the motor from inside the tank, press the tabs on both sides of the motor, then slide it out of the tank.

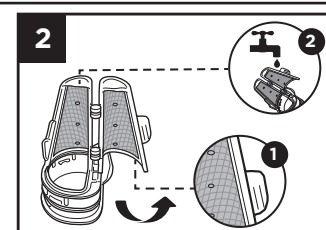


Wash the tank and the motor with soapy water. Rinse them and allow them to air-dry completely before reinstalling.

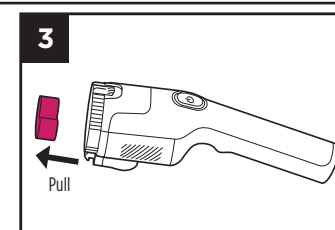
CLEANING FILTERS



With the cleaning tools detached, remove the hair filter from the opening in the end of the water tank. Press the tabs on both sides of the filter and pull it out.



Pull the filter open. Remove any hair or debris and rinse the filter with running water.



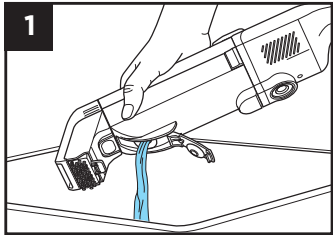
Pull the foam filter out of the handle. Rinse the filter with water only. Squeeze out excess water, then allow the filter to air-dry completely before reinstalling.

Do NOT submerge the handle in liquid.

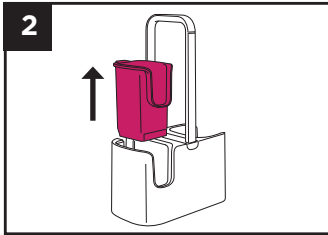
NOTE: Make sure to inspect, rinse, and air-dry the filters after each cleaning session. Make sure to reinstall the filters before use. Make sure that the hair filter door is properly closed before reinstalling the hair filter into place. If the tool collects debris, rinse it with water and allow it to air dry.

SELF-WASH CYCLE

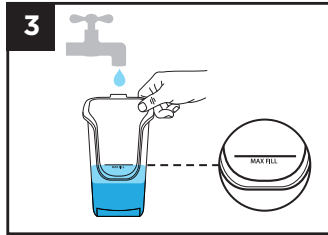
Designed for effortless maintenance, the self-wash feature helps give your StainForce a quick clean after tackling small messes.



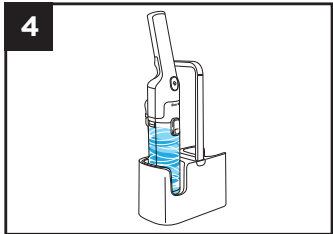
Empty the dirty water tank, using the **quick-pour** door.



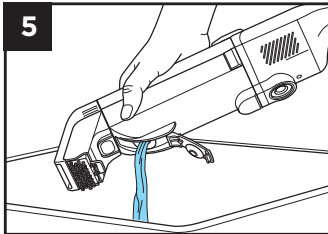
Gently squeeze the tab on the side of the self-wash caddy cup. Pull it up and out of the caddy.



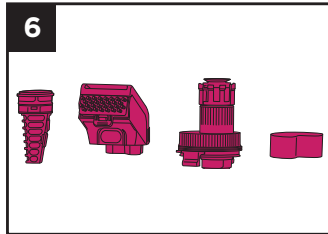
Fill the cup with clean water to the **Max Fill** line, then replace the cup in the caddy.



With the Stain Eliminator Tool attached, **insert** the StainForce into the cup and power on.



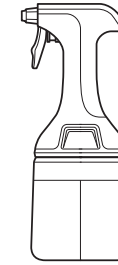
Remove the StainForce unit from the cup and turn power off. Open the **quick-pour** door latch and pour the water down a drain. Repeat the cycle if needed.



Check the other parts and the tools and clean them if necessary. See the Full Cleaning section for details.

NOTE: If unit needs further cleaning, follow the instructions in the Full Cleaning section.

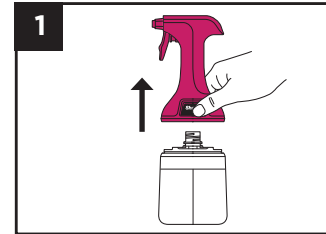
SHARK® CLEANING SOLUTION



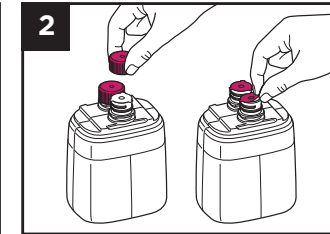
Use **ONLY** Shark branded cleaning solutions and sprayers. Your StainForce unit is not compatible with the other chemical solutions or cleaners.

The Solution Sprayer is **reusable**. **DO NOT** dispose of it.

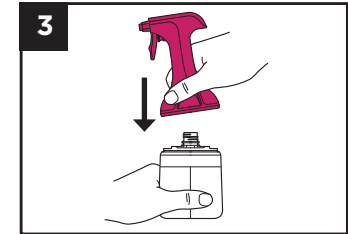
REPLACING THE CLEANING SOLUTION



Press both release buttons at the same time, then lift the reusable sprayer off the solution cartridge.

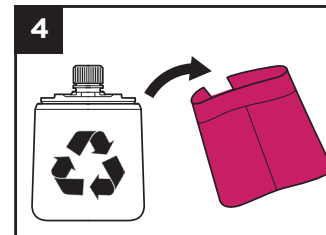


Remove both caps from the refill cartridge, then peel off the foil seals.



Press the sprayer down over the openings in the cartridge until it clicks securely into place.

Note: The sprayer only fits one way.



Remove the label from the empty solution cartridge and recycle the cartridge.

Running low?
Scan QR code to order replacements, or visit sharkclean.com

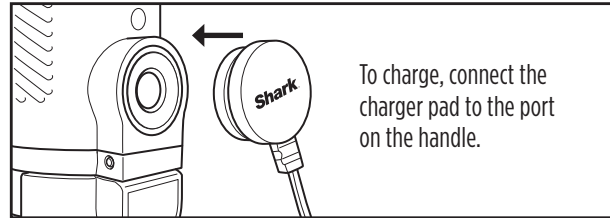


IMPORTANT: Before cleaning a surface, check the manufacturer's tag. **DO NOT** clean delicate rugs (including wool, cotton, silk, antique, or area rugs) unless they have a manufacturer's tag. If the manufacturer's tag says S or "Dry Clean Only," **DO NOT** clean that surface. If the tag says W or WS, you **CAN** use Shark Cleaning Solution on that surface.

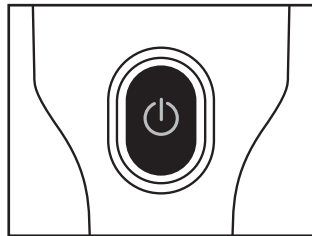
CHARGING YOUR STAINFORCE

It's important to fully charge your StainForce before using it for the first time, and after every use.

When the battery is fully charged, the power button LED will be solid green for 5 minutes.



LED INDICATOR LIGHTS



Error Warnings

Dirty Water Tank Full
Blinking White

Dirty Water Tank Missing
Blinking White/Red

Wrong Charger
Blinking Red/Green

CHARGING INDICATORS

100 - 51% Charged
Solid White/Blue

50 - 26% Charged
Solid Orange

25 - 1% Charged
Blinking Red

Recharge Needed
Solid Red

Unit Charging
Blinking Orange

Fully Charged
Solid Green

TROUBLESHOOTING

PROBLEM	SOLUTION
Low or no suction	Inspect and remove any trapped debris from the StainForce filters, cleaning tools, and tank. Make sure all parts are connected securely.
Cannot install reusable solution sprayer onto refill cartridge	The reusable solution sprayer only fits in one direction. Turn it around and try to click into place again.
Cannot install tool	Ensure the Hair Filter is fully closed and inserted. Tools cannot be placed on the unit without the Hair Filter present.
Water separator motor not spinning	Remove the Water Separator Motor, and clear any stuck debris. Rinse the motor with clean water and ensure it spins freely. Reassemble the unit and begin cleaning.
Unit not charging	Make sure the unit is fully charged and that you are using the correct charger. Try a different socket. Wipe the charging contact on the unit with a cloth to remove any debris or buildup.
Liquid is leaking from the unit	Make sure the Dirty Water Tank is correctly attached to the handle. Make sure the Quick-Pour Door is firmly closed. Remove the foam filter, and allow unit to dry before reassembly and use.
Unit is emitting air that smells bad	Disassemble unit and wash parts with clean, soapy water. Allow all parts to air-dry fully before reassembling.
Debris present in the Dirty Water Tank	Disassemble your StainForce and perform full maintenance. Reassemble the unit, ensuring that the hair filter door is closed and it is securely inserted.
Dirty Water Tank Full indicator light flashing - Tank is empty (LED blinking white)	Remove the Water Separator Motor and clear any stuck debris. Rinse the motor with clean water and ensure it spins freely. Reassemble the unit and begin cleaning. Detach the Dirty Water Tank, then reinstall it.
LED blinking white Dirty Water Tank full	Empty the Dirty Water tank. You can either pour dirty water out through the quick-pour door, or remove the Water Separator Motor from the tank, then pour out the dirty water.
LED alternating white/red Dirty Water Tank missing	Install the Dirty Water Tank onto the handle. Wait 15 seconds after emptying the tank before restarting the unit. Make sure the Dirty Water Tank is completely installed on both ends and is clicked securely into place.
LED alternating red/orange Discharge/charge protection	Remove any blockages from the air path. Ensure you are using the correct charger. Use only the Shark-provided charger.
LED alternating blue/orange Overheat protection	Allow the unit to cool down to room temperature for a minimum of 30 minutes before powering on.
LED blinking orange/white Water separator overcurrent protection	Make sure the Water Separator Motor inside the Dirty Water Tank is spinning freely. If the motor is stuck, remove it, reinstall, then try again. If the issue persists, contact Customer Service.
LED blinking green/white Wrong charger	Make sure you are using the included Shark charger.
LED blinking purple	Contact Customer Service.

THREE (3) YEAR LIMITED WARRANTY

The Three (3) Year Limited Warranty applies to purchases made from authorized retailers of **SharkNinja Operating LLC**. Warranty coverage applies to the original owner and to the original product only and is not transferable.

SharkNinja warrants that the unit shall be free from defects in material and workmanship for a period of two (2) years from the date of purchase when it is used under normal household conditions and maintained according to the requirements outlined in the Owner's Guide, subject to the following conditions and exclusions:

***CALIFORNIA RESIDENTS ONLY:** The Three (3) Year Limited Warranty period begins on the original date of delivery or pick-up.

What is covered by this warranty?

1. The original unit and/or non-wearable components deemed defective, in SharkNinja's sole discretion, will be repaired or replaced up to two (2) years from the original purchase date.
2. In the event a replacement unit is issued, the warranty coverage ends six (6) months following the receipt date of the replacement unit or the remainder of the existing warranty, whichever is later. SharkNinja reserves the right to replace the unit with one of equal or greater value.

What is not covered by this warranty?

1. Normal wear and tear of wearable parts (such as Shark Cleaner, foam filter, hair filter, Impeller Motor, Pad, etc.), which require regular maintenance and/or replacement to ensure the proper functioning of your unit, are not covered by this warranty. Replacement parts are available for purchase at sharkaccessories.com.
2. Any unit that has been tampered with or used for commercial purposes.
3. Damage caused by misuse, abuse, negligent handling, failure to perform required maintenance, or damage due to mishandling in transit.
4. Consequential and incidental damages.
5. Defects caused by repair persons not authorized by SharkNinja. These defects include damages caused in the process of shipping, altering, or repairing the SharkNinja product (or any of its parts) when the repair is performed by a repair person not authorized by SharkNinja.
6. Products purchased, used, or operated outside North America.

How to get service

If your appliance fails to operate properly while in use under normal household conditions within the warranty period, visit sharkclean.com/support for product care and maintenance self-help. Our Customer Service Specialists are also available at **1-800-798-7398** to assist with product support and warranty service options, including the possibility of upgrading to our VIP warranty service options for select product categories.

SharkNinja will cover the cost for the customer to send in the unit to us for repair or replacement. A fee of \$24.95 (subject to change) will be charged when SharkNinja ships the repaired or replacement unit.

How to initiate a warranty claim

You must call **1-800-798-7398** to initiate a warranty claim. You will need the receipt as proof of purchase. A Customer Service Specialist will provide you with return and packing instruction information.

How state law applies

This warranty gives you specific legal rights, and you also may have other rights that vary from state to state. Some states do not permit the exclusion or limitation of incidental or consequential damages, so the above may not apply to you.

To better assist you, we ask that you register the product and have it with you when you call.

NOTES

PLEASE READ CAREFULLY AND KEEP FOR FUTURE REFERENCE.

This Owner’s Guide is designed to help you get a complete understanding of your new Shark® StainForce.

SharkNinja Operating LLC
Needham, MA 02494

1-800-798-7398
sharkclean.com

Illustrations may differ from actual product. We are constantly striving to improve our products, therefore the specifications contained herein are subject to change without notice.

This product may be covered by one or more U.S. patents. See sharkninja.com/patents for more information.

©2025 SharkNinja Operating LLC. SHARK is a registered trademark of SharkNinja Operating LLC.
STAINFORCE is a trademark of SharkNinja Operating LLC.
HX105_IB_26_MP_Mv11



@sharkhome