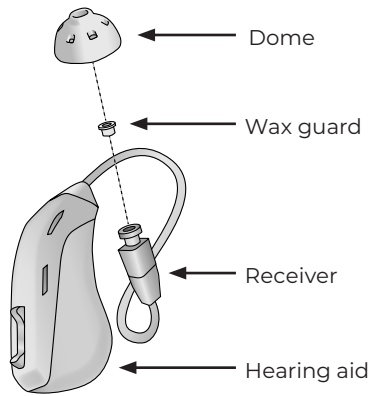




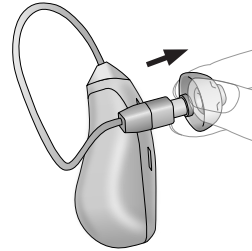
## Lexie Hearing Aids Powered by Bose

### WAX GUARD REPLACEMENT GUIDE



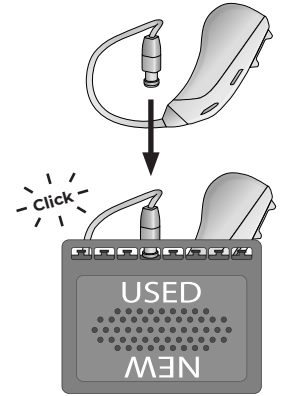
For help, call (800) 499-1336 and speak to a Lexie Expert™ or go to [lexiehearing.com/us/support](http://lexiehearing.com/us/support)

**Step 1:** Firmly peel off dome.

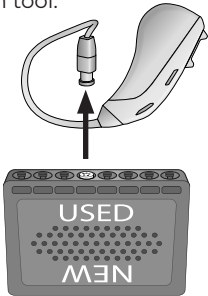


Dirty wax guard

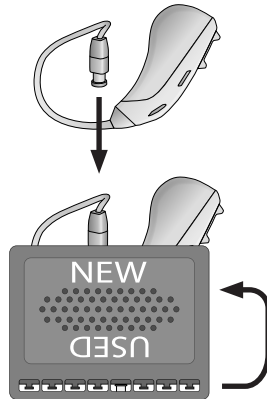
**Step 2:** Press receiver into empty USED slot.



**Step 3:** Remove receiver from tool.



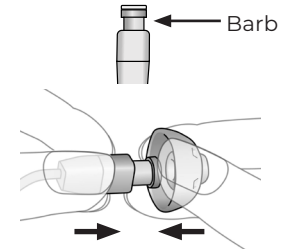
**Step 4:** Rotate tool and firmly press receiver into NEW slot.



**Step 5:** Remove receiver from tool.



**Step 6:** Attach dome fully over barb.



Wax guard removed from receiver, remains in tool.

INCORRECT

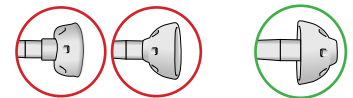
CORRECT



New wax guard stays in receiver.

INCORRECT

CORRECT



Copyright © 2023  
HearX LP (Pty) Ltd.  
44-0023-02 REV1