

# IMPORTANT SAFETY INSTRUCTIONS

SUITABLE FOR HOUSEHOLD USE ONLY.

## WARNING

TO REDUCE THE RISK OF FIRE, ELECTRIC SHOCK, OR INJURY: READ ALL THESE INSTRUCTIONS BEFORE USE.

1. Do not incinerate battery cells. Consult your local waste authority for information regarding available recycling and/or disposal options.
2. This appliance comes with a remote control that contains (2) AAA batteries. Dispose of batteries properly. Always keep batteries away from children (choke hazard). Even used batteries can cause injury.
3. To reduce the risk of an electric shock, connect only to an outlet provided with a Residual Current Device (RCD).
4. The fan should be used on a stable and level surface.
5. Never use this fan near pools, bathtubs, showers, basins, or other vessels containing water.
6. Do not operate any unit with a damaged wire. Discard the unit or return to an authorized service facility for examination and/or repair.
7. Do not run cord under carpeting. Do not cover charge cord with throw rugs, runners, or similar coverings. Do not route charger cord under furniture or appliances. Keep charger cord away from high-traffic areas. Place charger in an area where the cord will not be tripped over.
8. If the charger cord is damaged, it should be replaced.
9. This appliance is not intended for use by anyone (including children) with reduced physical, sensory, or mental capabilities, or lack of experience and knowledge, unless they have been given supervision or instruction concerning use of the appliance by a person responsible for their safety.
10. Children should be supervised to ensure that they DO NOT play with the appliance.
11. Cleaning and user maintenance shall not be made by children without supervision.
12. Prior to cleaning or other maintenance, the appliance must be unplugged from the electrical outlet.
13. Only use Shark™ branded accessories.
14. Do not use if appliance is not working as it should, or has been dropped, damaged, left outdoors, or dropped into water.
15. Turn off all controls before plugging in or unplugging the appliance.
16. Unplug from electrical outlet when not in use and before any maintenance or cleaning.
17. Hand wash exterior/hard plastic/non-electronic parts with water only. Do not immerse. Cleaning with chemicals could damage the unit.
18. Do not attempt to repair or adjust any electrical or mechanical functions of this appliance, as this may cause danger and void the warranty.
19. Remove and immediately recycle or dispose of used batteries according to local regulations and keep away from children. Do NOT dispose of batteries in household trash or incinerate.
20. Even used batteries may cause severe injury or death.
21. Call a local poison control center for treatment information.
22. Compatible battery type is AAA.
23. The nominal battery voltage is 3V.
24. Non-rechargeable batteries are not to be recharged.
25. Do not force discharge, recharge, disassemble, heat above 60°C, or incinerate. Doing so may result in injury due to venting, leakage, or explosion resulting in chemical burns.
26. Ensure the batteries are installed correctly according to polarity (+ and -).
27. Do not mix old and new batteries, different brands or types of batteries, such as alkaline, carbon-zinc, or rechargeable batteries.

28. Remove and immediately recycle or dispose of batteries from equipment not used for an extended period of time according to local regulations.
29. Always completely secure the battery compartment. If the battery compartment does not close securely, stop using the product, remove the batteries, and keep them away from children.

 **WARNING: Not suitable for use with solid-state speed controls.**

### BATTERY REMOVAL AND DISPOSAL

This remote control uses a AAA battery. When the remote battery no longer has a charge, it should be removed from the remote and recycled. DO NOT incinerate or compost the product with its integral battery or the remote battery. When your remote battery needs to be replaced, dispose of it or recycle it in accordance with local ordinances or regulations. In some areas, it is illegal to place spent batteries in the trash or in a municipal solid waste stream. Return spent battery to an authorized recycling center or to retailer for recycling. Contact your local recycling center for information on where to drop off the spent battery.

### POWER SUPPLY SAFETY

1. Read and follow all instructions that are on the product or provided with the product.
2. Do not use an extension cord.
3. Do not use within 10 feet of pool and do not use in a bathroom.

### FCC WARNINGS

**Note:** This equipment has been tested and complies with the limits for a Class B digital device, pursuant to part 15 of the FCC Rules. These limits are designed to provide reasonable protection against harmful interference in a residential installation. This equipment generates, uses, and can radiate radio frequency energy, and if not installed and used in accordance with the instructions, may cause harmful interference to radio communications.

To see if this equipment interferes with radio or television reception, try turning the equipment off and on.

To correct any interference:

- Reorient or relocate the receiving antenna.
- Increase the distance between the equipment and the receiver.
- Connect the equipment to a different outlet than the receiver.
- Consult the dealer or an experienced technician for help.

This device complies with Part 15 of the FCC Rules. Operation is subject to two conditions:

1. This device may not cause harmful interference, and
2. this device must accept any interference received, including interference that may cause undesired operation.

**Caution:** Any changes or modifications to this unit not expressly approved by the party responsible for compliance could void the user's authority to operate the equipment.

### IC statement:

This device contains licence-exempt transmitter(s)/receiver(s) that comply with Innovation, Science and Economic Development Canada's licence-exempt RSS(s). Operation is subject to the following two conditions:

1. This device may not cause interference.
2. This device must accept any interference, including interference that may cause undesired operation of the device.

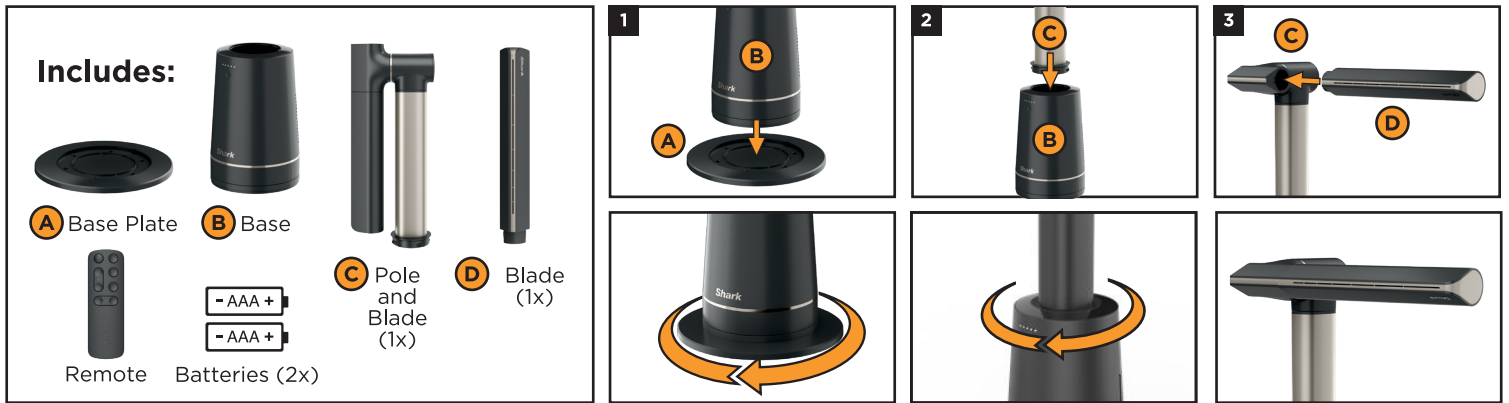
---

## READ AND SAVE THESE INSTRUCTIONS

Please be sure to read and save the warnings on other side prior to using your unit.

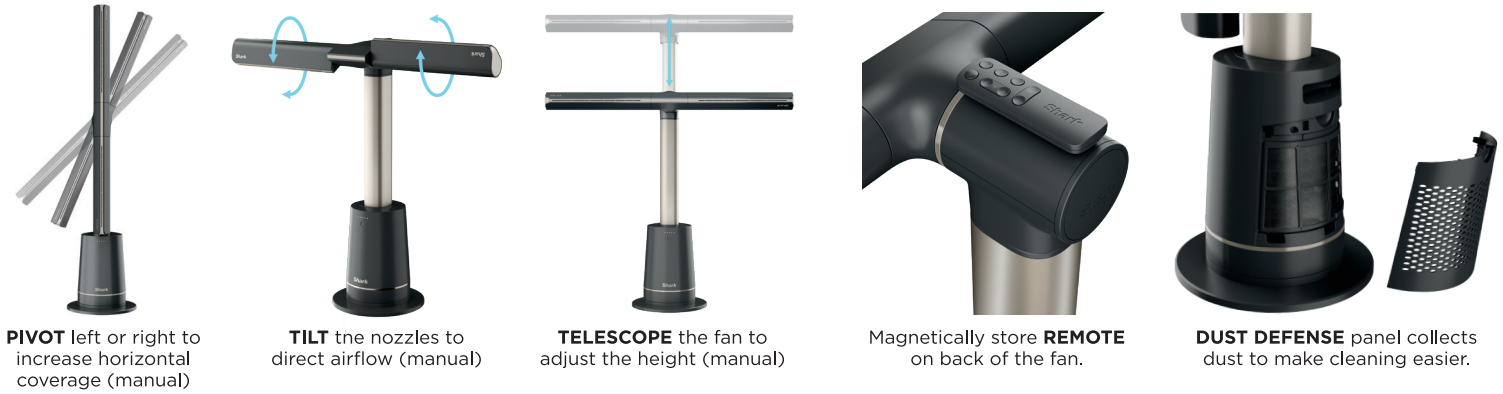
# QUICK START GUIDE

## SETTING UP YOUR FAN



1. Use assembly stickers to align the **Base** onto the **Base Plate**. Rotate the base clockwise until it clicks into place.
2. Use assembly stickers to align the red arrow printed on the **Pole** with the red arrow printed on the **Base**. Twist the **Pole** clockwise to lock it into the **Base**. Remove tape after assembly has been completed.
3. Remove assembly tape and cardboard from **Pole**. Line up the printed red circle on the **Blade** with the red circle on the inner **Pole**. Press the **Blade** firmly into the **Pole** until it clicks into place.

## FEATURES



**PIVOT** left or right to increase horizontal coverage (manual)

**TILT** the nozzles to direct airflow (manual)

**TELESCOPE** the fan to adjust the height (manual)

Magnetically store **REMOTE** on back of the fan.

**DUST DEFENSE** panel collects dust to make cleaning easier.

## CUSTOMIZABILITY

	<b>Power On</b> <i>Press button on base or remote</i>	Press  to turn the unit on or off.
	<b>Fan Speeds</b> <i>Press and hold button on base or press on remote</i>	Press the  fan icon on the remote or hold down the power button on the unit to switch between fan speeds 1-10. LED lights will indicate selected fan speed.
	<b>Specialty Modes</b> <i>BreezeBoost™ / Sleep Mode</i>	Press the  specialty mode icon on the remote to toggle through specialty modes: BreezeBoost™: Select for a burst of powerful airflow. When BreezeBoost mode is activated, the LED lights will cycle from left to right. Sleep Mode: Select Sleep mode to mute chimes, dim lights, and switch to a fan speed optimized for sleep. When Sleep mode is activated, the LED lights will cycle from right to left.
	<b>Oscillation</b> <i>Remote only</i>	<p><b>Setting 1: 45 degrees</b> <b>Setting 2: 90 degrees</b> <b>Setting 3: 180 degrees</b></p> <p>Press the  oscillation icon on the remote to toggle between oscillation angles. LED lights will indicate which angle is selected. ⚠️ If you'd like to oscillate the unit when it is horizontal, make sure to place it somewhere where it will not hit any walls or objects.</p>
	<b>Timer</b> <i>Remote only</i>	<p><b>Setting 1: 1 Hour</b> <b>Setting 2: 2 Hours</b> <b>Setting 3: 4 Hours</b> <b>Setting 4: 8 Hours</b> <b>Setting 5: 12 Hours</b></p> <p>Press the  timer icon on the remote to switch between timer settings of 1-12 hours. LED lights will indicate how many hours the timer is set for. LEDs will switch off after 20 seconds. To check how long is left on your timer, press the  timer icon and LED lights will appear.</p>
	<b>Horizontal Angle Adjust</b> <i>Remote only</i>	Press the  angle adjust arrows on the remote to change the horizontal angle of the fan. From a distance.

**TO DISABLE CHIME:** Hold down the timer and oscillation buttons on the remote at the same time for 3 seconds to disable chiming. Repeat to re-enable.

**CARRYING POSITION:** Carry the unit by the handle on the base while supporting the air duct.



## FOR MORE INFORMATION

visit [qr.sharkclean.com/TF200series](http://qr.sharkclean.com/TF200series) or

**SCAN HERE**

USING YOUR SMARTPHONE CAMERA FOR FULL INSTRUCTIONS OR TO PURCHASE ACCESSORIES.

