

nuwave®

Hot Brew

TEMPERATURE CONTROL MUG



Scan for important product information and updates.

Owner's Manual

Model: 80110CT



Questions or Concerns?

Customer Service: assist@nuwavenow.com

1-888-502-7805

Mon-Fri 7:30am-4:30pm CST

THANK YOU!

Congratulations on your Nuwave® purchase. We know there are many options available and sincerely appreciate the trust you have placed in us.

For the last 30 years, we have committed to introducing products that promote healthy living at affordable prices. By combining the highest quality designs with cutting edge technology, we always strive to blend feature, function, and innovation into every product we make. We hope you will agree.

We would love to hear from you. Please feel free to reach out with any feedback or comments that could improve your experience. We would also enjoy hearing about your successes. **Scan the QR code below to email us.**



Customer Service
assist@nuwavenow.com

Connect with Us!

#Nuwavenow



Visit [Nuwavenow.com](https://www.nuwavenow.com) to see other great products and accessories.



Register Today!

Use your smartphone or device to scan the QR code located on the bottom of your unit to register your product, or visit [Nuwavenow.com/register](https://www.nuwavenow.com/register).

TABLE OF CONTENTS

Safeguards & Information	4-5
Electrical Information	5
Parts & Accessories	6
Getting Started	7-9
Display Guide	7-8
Charging the Mug.....	8
Adjusting the Temperature & Timer During Use	9
Lock, Unlock, Mute & Unmute	9
Fahrenheit to Celsius.....	9
Heating & Brewing Modes	10-13
Brewing Coffee	10-11
Brewing Green & Black Tea.....	11-12
Warm & Hot Mode	13
Precision Warm Mode	13
Changing the Default Temperature and Timer.....	13
Tips for Optimal Brewing	14
Filter Lid	15
Cleaning & Maintenance	16
Trouble Shooting Guide	17
Warranty	18-19

SAFEGUARDS & INFORMATION

ALWAYS KEEP THIS MANUAL HANDY FOR FUTURE REFERENCE.

IMPORTANT SAFEGUARDS

Save these instructions. Read and follow all instructions carefully.

When using electrical appliances, basic safety precautions should always be followed to reduce the risk of fire, electric shock, and injury, including the following:

1. Read all instructions.
2. **Household Use Only. DO NOT** use outdoors.
3. **DO NOT** use appliance for other than intended use.
4. **DO NOT** touch hot surfaces. Use handles or knobs.
5. To protect against electrical shock do not immerse cord, plugs, or main body of appliance in water or other liquid.
6. Close supervision is necessary when any appliance is used by or near children.
7. Unplug from outlet when not in use and before cleaning. Allow to cool before putting on or taking off parts.
8. **DO NOT** operate any appliance with a damaged cord or plug or after the appliance malfunctions or has been damaged in any manner. Return appliance to the nearest authorized service facility for examination, repair, or adjustment.
9. The use of accessory attachments not recommended by the appliance manufacturer may cause injuries.
10. **DO NOT** let cord hang over edge of table or counter, or touch hot surfaces.
11. **DO NOT** place on or near a hot gas or electric burner, or in a heated oven.
12. Extreme caution must be used when moving an appliance containing hot liquids.
13. The heating element surface may remain hot after use and is subject to residual heat. Use caution to avoid burns.
14. **ALWAYS** attach plug to appliance first, then plug cord into the wall outlet. To disconnect, turn any control to "off," then remove plug from wall outlet.
15. This appliance is not intended for use by persons (including children) with reduced physical, sensory or mental capabilities, or lack of experience and knowledge, unless they have been given supervision or instruction concerning use of the appliance by a person responsible for their safety.
16. Children should be supervised to ensure that they do not play with the appliance.
17. Avoid spillage on the connector.
18. Mug contents and interior may be hot. Risk of burns. Use caution when handling.
19. Scalding may occur if the Lid is removed during the brewing cycles.

WARNING

This Mug heats liquids to **dangerously high temperatures**. Hot contents can cause serious burns or scalding injuries if spilled, splashed, or consumed. There is risk of permanent injury to the mouth, throat, skin, and eyes. Always check temperature before drinking. Handle, carry, and open with extreme caution.

DO NOT allow use by children or any person unaware of the burn hazard. Failure to follow these warnings may result in severe personal injury.

SAFEGUARDS & INFORMATION

ALWAYS KEEP THIS MANUAL HANDY FOR FUTURE REFERENCE.

ADDITIONAL SAFEGUARDS

1. Hand wash only. **DO NOT** place in dishwasher unless otherwise marked. Do not submerge the Mug or Charging Base, to protect against electric shock. Dry thoroughly before charging.
2. This product is **NOT** microwave or freezer safe.
3. Keep hands and face away from the Mug opening during and immediately after brewing, as hot steam may escape. Scalding may occur if the Lid is removed during the brewing cycles.
4. Use caution when consuming hot liquids. Ensure the Lid is secured firmly to prevent spills. It is highly recommended to use the Lid when traveling.
5. Place the Mug on a flat, stable surface while brewing to prevent tipping.
6. Monitor the Mug during brewing and do not leave it unattended.
7. Contains a rechargeable lithium-ion battery. **DO NOT** expose to fire or disassemble, as this may cause damage or injury. Lithium-ion batteries may pose a risk of short-circuiting if improperly handled or damaged.
8. Avoid exposing the battery to extreme heat or very low air pressure.
9. Follow EPA and local recycling guidelines for proper battery disposal.

WARNING

The Mug Lid must be fully closed and properly sealed on the Mug before use. An unsealed, partially sealed, or damaged Lid can cause hot liquid to leak, splash, or spill without warning. This can cause **severe burns or scalding injuries**, with a risk of permanent damage to the mouth, face, skin, or eyes. Always examine the Lid's seal gasket for damage, debris, cracks, warping, or misalignment before use. Handle, carry, and drink with extreme caution, especially while moving. **DO NOT** use if the Mug Lid does not fit securely or if the seal is damaged or missing. Use extreme caution when drinking, tilting, or carrying—especially when the Mug contains hot liquid. Failure to follow these warnings may result in severe personal injury.

Electrical Information

Note regarding power supply cord:

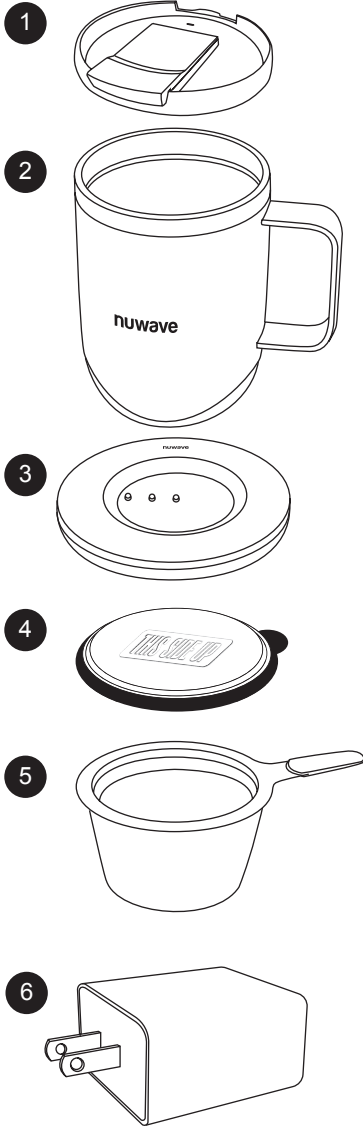
- a) A short power-supply cord (or detachable power-supply cord) is provided to reduce the risks associated with becoming entangled in or tripping over a longer cord.
- b) Longer detachable power-supply cords or extension cords are available and may be used if care is exercised in their use.
- c) If a longer detachable power-supply cord or extension cord is used:
 - 1) The marked electrical rating of the cord set or extension cord must be at least as great as the electrical rating of the appliance;
 - 2) The cord should be arranged so that it does not drape over the counter-top or tabletop where it can be pulled on by children or tripped over unintentionally; and
 - 3) If the appliance is of the grounded type, the cord set or extension cord should be a grounding-type 3-wire cord.



SAVE THESE INSTRUCTIONS

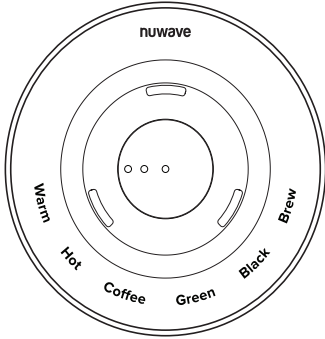
PARTS & ACCESSORIES

Unit Part #: 80110CT



- 1 Mug Lid
Part #: HBA3
- 2 Mug
Part #: HBP1B
- 3 Charging Base
Part #: HBP2B
- 4 Filter Lid
Part #: HBA2
- 5 Filter
Part #: HBA1
- 6 Power Plug
Part #: HBP4
- 7 Detachable Cord
Part #: HBP3B

GETTING STARTED



CHARGING BASE

SETTING UP THE CHARGING BASE

Connect one end of the detachable cord to the power plug and the other end to the Charging Base. Insert the power plug into a wall outlet. The **nuwave** logo will glow softly, indicating the Charging Base is powered on.

TURNING THE CHARGING BASE ON & OFF:

1. Plug in the Charging Base, and the control panel will briefly light up. **nuwave** will continue to glow dimly.
2. Press **nuwave** to turn the Base on. The control panel will glow dimly, displaying all the modes.
3. Press it again to turn it off.

TURNING THE MUG ON & OFF:

1. To turn on the Mug, press and hold **nuwave** for 2 seconds. The screen will say "HELLO."
2. To turn it off, press and hold **nuwave** again for 2 seconds. The screen will say "GOODBYE."

MODES ON THE CHARGING BASE

Brewing Modes:

Coffee, **Green**, and **Black** are preset with ideal temperatures and Brewing Timers to help you achieve the perfect cup of coffee or tea every time.

Temperature Range: **70°F-205°F**

Default Temperature and Timer:

Coffee: 200°F for 4 minutes

Green Tea: 175°F for 2 minutes

Black Tea: 205°F for 3 minutes

Hot and Warm Modes

Hot and Warm modes are designed to maintain your preferred drink temperature. Unlike brewing modes, they do not use timers—these modes simply keep your beverage warm or hot for as long as needed.

Temperature Range: **70°F-150°F**

Warm: **135°F** Hot: **150°F**

DISPLAY GUIDE

Tap **nuwave** on the Mug to scroll through display information at any time.

1 Tap: Shows the current temperature.

2 Taps: Shows the target temperature.

3 Taps: Shows the timer (if set).

On the Charging Base: Brewing Timer

Off the Charging Base: Temperature Hold Time

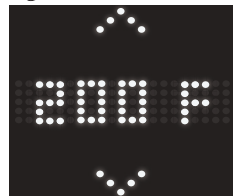
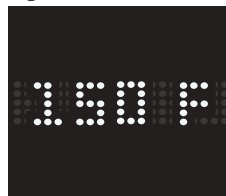
4 Taps: Shows the battery level.



Current Temp



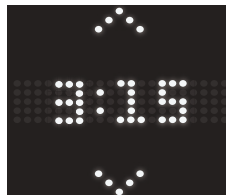
Target Temp



Timer (Hr:Mins)



Battery Life (80%)



GETTING STARTED

TIMER

The TIMER feature adjusts based on the Mug's position:

- While on the Charging Base: The timer operates as a brew timer for Coffee, Black, and Green modes. Time is set in minutes and seconds.
- While off the Charging Base: The timer controls how long the Mug maintains your selected drinking temperature. It keeps your drink warm for the set time (in hours and minutes) or until the battery runs out—whichever comes first.

Note:

- Once the brew timer has started, it will continue counting down even if the Mug is removed from the charging base. It will not reset.

EMPTY ALERT

The “EMPTY” alert appears when little or no liquid is detected. This safety feature prevents dry heating and protects the Mug from overheating. The Mug requires liquid to operate. If no liquid is detected, it will not heat and will shut off automatically.



This may occur when:

- The Mug is powered on with no liquid inside.
- The Mug runs out of liquid during use.
- The Mug detects no liquid during a brewing cycle.

When no liquid is detected:

- The display shows “EMPTY.”
- After approximately 2 minutes, the display will show “GOODBYE,” and the Mug will automatically shut off.

To resume use:

Add liquid, then press and hold **nuwave** for 2 seconds to turn the Mug back on.

CHARGING THE MUG

For optimal performance, use only the included cord and plug provided with the Mug.

1. Place the Mug on the Charging Base.
2. A flashing battery icon will appear to show its charging.
3. Once fully charged, the icon will remain solid for 5 seconds and then disappear.

Note:

- Charging will pause if the Mug is turned on.
- The Charging Base will not function with power sources that provide 5V or 9V. Use a standard wall outlet or compatible adapter.

▲ NOTICE

CHARGING: Cold Battery

For best results, charge the Mug in room temperature above 59°F (15°C). In colder environments, the Mug will preheat the battery before charging which may cause a delay. Charging begins automatically once a safe battery temperature is reached.

▲ CAUTION

CHARGING: Cold Battery, Empty Mug

If the Mug is empty during the preheating process, the bottom surface of the Mug may become hot to the touch. This is normal and part of the battery warming process. However, to avoid discomfort or potential burns, do not touch the bottom of the Mug while it is empty and charging in cold environments.

▲/▼ ARROW BUTTONS

Use the ▲ UP ARROW and ▼ DOWN ARROW icons on the Mug to adjust the temperature and timer, whether the Mug is on or off the Charging Base.

1. Tap ▲ to increase or ▼ to decrease the temperature or time.
2. Press and hold either button to scroll faster.

GETTING STARTED

ADJUSTING THE TEMPERATURE DURING USE

Temperature is adjusted in 1-degree increments with each press of the ▲/▼ buttons.

The minimum and maximum temperature is dependent on the selected mode. See page 7 for more details.

When the Mug is on the Charging Base

1. Ensure there is liquid in the Mug.
2. Select Hot, Warm or the desired brewing mode.
3. Tap twice to display the Target Temperature.
4. Use the ▲/▼ arrows to adjust the temperature.

When the Mug is off the Charging Base

1. Ensure there is liquid in the Mug.
2. Turn on the Mug and tap **nuwave** twice to display the Target Temperature.
3. Use the ▲/▼ arrows to adjust the temperature.

ADJUSTING THE TIMER

To Adjust the Brewing Timer:

The Brewing Timer can only be changed while on the Charging Base and a brewing mode is selected.

1. Place the Mug on the Charging Base and select a brewing mode. The target temperature will be displayed.
2. Tap **nuwave** once to display the timer.
3. Press ▲ or ▼ to set the time in minutes and seconds.
4. Press and hold to scroll faster.

To adjust your preferred drinking temperature hold time for Hot or Warm mode and after brewing:

1. Tap **nuwave** three times to display the timer.

2. Press ▲ or ▼ to set the time in hours and minutes.

Note:

- The Mug will automatically shut off when the set time ends to conserve battery life.

MUTE

Enable or disable the beep sounds on the Charging Base and Mug.

1. Press and hold **Brew** for 2 seconds.
2. The Mug will beep twice and display “MUTE” or “UNMUTE” to confirm the change.
3. Repeat to mute or unmute.

LOCK

Disables the button functionality on the Mug, preventing unintentional target temperature changes.

To lock the temperature:

1. Tap **nuwave** twice to display the Target Temperature.
2. Press and hold both **nuwave** and the ▲ on the Mug until you hear two beeps.
3. “LOCK” or “UNLOCK” will be displayed.
4. Repeat the same step to lock or unlock.

Note:

- When the Mug displays “LOCK,” the temperature lock has been activated.
- The locked setting remains active even after the Mug is powered off.

SWITCHING BETWEEN FAHRENHEIT (°F) AND CELSIUS (°C)

To change the temperature display format:

1. Place the Mug on the Charging Base.
2. When the current temperature appears on the display, press and hold both **Hot** and **Coffee** at the same time.
3. The Mug will beep twice, and the new temperature format will appear.

MODES

BREWING COFFEE

For proper brewing, ensure the Mug is placed on the Charging Base, positioned on a stable, flat surface.

Before starting, confirm the Filter is securely in place to help prevent spills or splashing during the brewing process.

Important: When **NOT** using boiling water, the Mug must first heat the water to the target temperature. Wait for the Brew button to start blinking before adding the filter with coffee grounds. Use caution when placing the filter into the Mug, as the water level may rise and could overflow.

Customize Your Brew Strength

Coffee strength depends on the amount of coffee grounds used and the brewing time.

Begin with the recommended amounts for 14 oz of water (the maximum capacity of the Mug), and adjust as needed based on preference.

For optimal brewing performance, it is recommended to use boiling or hot water. This helps maintain the desired temperature throughout the brewing cycle and enhances flavor extraction.

COFFEE (Based on 14 oz water)		
Strength	Tbsp	Strength
Standard	3	Balanced flavor
Strong	4	Bolder taste
Extra Strong	5	Robust & intense flavor

Step 1: Add coffee grounds to the Filter and place the Filter securely into the Mug.

Step 2: Slowly pour boiling water into the Mug (up to 14 oz).

- As you pour, the coffee grounds will bloom. Gently stir the grounds as needed to help the water flow through and prevent accidental overflow.
- **ALWAYS** keep the water level below the maximum fill line.

Step 3: Press **Coffee**.

- The target temperature will appear on the Mug display.
- **Coffee** will blink while the Mug is heating.

Step 4: Press the **Brew** button immediately when using boiling water.

- When heating water with the Mug, wait for **Brew** to blink—this indicates the target temperature has been reached. Press **Brew** to begin the brewing cycle.
- The Mug will beep three times and the display will blink once the water is ready.
- The brew timer will appear and begin counting down.

Step 5: The display will briefly show “LID ON.”

- This is optional—place the Filter Lid on the Mug at this time if desired. The message will disappear automatically.

Step 6: When brewing is complete, the Mug will beep three times and display “0,” indicating that the brew cycle has ended.

- The Mug will automatically switch to Warm Mode (135°F).
- The **Warm** button on the base will light up and remain on until the Mug reaches the target temperature.
- Once the target temperature is reached, the **Warm** button will begin blinking.
- To switch to Hot Mode (150°F), press **Hot** at any time.

Caution: The Mug was brewing at 200°F and may be extremely hot. Handle with care to avoid burns.

Step 7: Allow the hot liquid to cool before drinking or placing the Mug Lid on the Mug.

Notes:

- When using boiling water, the initial temperature reading on the display may appear lower than the water temperature. This is due to the lower temperature of the coffee grounds and Filter. Allow a few moments for the Mug to adjust and display the accurate temperature.

- When removing the Filter from the Mug, remove the Filter Lid first to help the liquid drain faster. Then lift the Filter Basket and allow it to fully drain before discarding or setting it aside.
- While brewing, you can view the battery level, current temperature, and target temperature on the display.

CAUTION

Contents may be extremely hot. The Mug Lid helps retain heat and includes a steam vent to release pressure—keep hands and face away. Allow liquid to cool before drinking.

BREWING GREEN AND BLACK TEA

For proper brewing, ensure the Mug is placed on the Charging Base, positioned on a stable, flat surface.

Before starting, confirm the Filter is securely in place to help prevent spills or splashing during the brewing process.

Customize Your Brew Strength

Strength depends on the amount of tea leaves used and the brewing time.

Begin with the recommended amounts for 14 oz of water, which is the maximum capacity of the Mug, and adjust as needed based on preference.

GREEN TEA (Based on 14 oz water)		
Strength	Tsp	Strength
Light & Delicate	1	Subtle flavor
Medium	1.5	Balanced strength
Strong	2	Richer, bolder flavor

BLACK TEA (Based on 14 oz)		
Strength	Tsp	Strength
Light & Mellow	1.5	Smooth & gentle
Medium	2	Classic cup
Strong	2.5	Bold & brisk

Green Tea Steps

Step 1: Slowly pour up to 14 oz of hot water into the Mug.

- **DO NOT** exceed the maximum fill line.

Step 2: Press **Green**.

- The target temperature will appear on the display.
- **Green** will blink while the Mug begins heating.

Step 3: The Mug will beep three times and the display will blink when the target temperature is reached.

Step 4: Press the **Brew** button immediately when using boiling water.

- When heating water with the Mug, wait for **Brew** to blink—this indicates the target temperature has been reached. Press **Brew** to begin the brewing cycle.
- The Mug will beep three times and the display will blink once the water is ready.
- The brew timer will appear and begin counting down.

Note:

- If the water is already above the target temperature or at the preferred brewing temperature, **Brew** can be pressed before the Mug reaches the target temperature.

Step 5: Brewing time will count down automatically.

Step 6: When brewing is complete, the Mug will beep three times and display “0,” indicating that the brew cycle has ended.

- The Mug will automatically switch to Warm Mode (135°F).
- The **Warm** button on the Base will turn solid, and the LED display will remain on until the Mug reaches the target temperature.
- Once the target temperature is reached, the **Warm** button will begin blinking.
- To switch to Hot Mode (150°F), press **Hot** at any time.

MODES

Step 7: Allow the hot liquid to cool before drinking or placing the Mug Lid on the Mug.

Note:

- When removing the Filter from the Mug, remove the Filter Lid first to help the liquid drain faster. Then lift the Filter Basket and allow it to fully drain before discarding or setting it aside.
- While brewing, you can view the battery level, current temperature, and target temperature on the display.

Black Tea Steps:

Step 1: Add tea leaves to the Filter and place the Filter securely into the Mug.

Step 2: Slowly pour boiling water into the Mug (up to 14 oz).

- As you pour, the tea leaves will expand. Gently stir to help the water flow through and prevent overflow.
- Always keep the water level below the maximum fill line.

Step 3: Press **Black**.

- The target temperature will appear on the display.
- BLACK will blink while the Mug is heating.

Step 4: Immediately press **Brew**.

- If heating with the Mug, wait until the Brew button starts blinking, then press it. The Mug will beep three times when the target temperature is reached.
- The brew timer will appear and begin counting down.

Step 5: The display will briefly show “LID ON.”

- This is optional—place the Filter Lid on the Mug at this time if desired. The message will disappear automatically.

Step 6: When brewing is complete, the Mug will beep three times and display “0,” indicating that the brew cycle has ended.

- The Mug will automatically switch to Warm Mode (135°F).

- The **Warm** button on the base will turn solid, and the LED display will remain on until the Mug reaches the target temperature.
- Once the target temperature is reached, the **Warm** button will begin blinking.
- To switch to Hot Mode (150°F), press **Hot** at any time.

CAUTION: The Mug was brewing at 200°F and may be extremely hot. Handle with care to avoid burns.

Step 8: Allow the hot liquid to cool before drinking or placing the Mug Lid on the Mug.

Notes:

- When using boiling water, the initial temperature reading may appear lower due to the cooler coffee grounds and filter. Allow a few moments for the Mug to adjust and display the correct temperature.
- When removing the Filter from the Mug, remove the Filter Lid first to help the liquid drain faster. Then lift the Filter Basket and allow it to fully drain before discarding or setting it aside.

While brewing, you can view the battery level, current temperature, and target temperature on the display.

⚠ WARNING

During the brewing process, this Mug maintains optimal steeping temperatures. Coffee is set at **200°F**, Black Tea is set for **205°F**, Green Tea is set for **175°F**. The liquid inside may remain dangerously hot even after brewing is complete. Drinking immediately may result in serious burns to the mouth, throat, or tongue. **ALWAYS** allow the beverage to cool before drinking. For safe consumption, wait until the liquid has cooled to approximately **135°F to 150°F**. **NEVER** assume contents are safe to drink based on appearance or steam level alone. Failure to follow these warnings may result in severe personal injury.

CAUTION

Contents may be extremely hot. The Mug Lid helps retain heat and includes a steam vent to release pressure—keep hands and face away. Allow liquid to cool before drinking.

USING WARM OR HOT MODE ON THE CHARGING BASE

1. Turn the Mug on and press the desired Heating Mode button: **Warm** (135°F) or **Hot** (150°F)
2. Adjust the target temperature using the ▲/▼ arrows if desired.
3. The Mug will maintain the selected temperature while on or off the Charging Base.

Note:

- If Warm or Hot mode are selected before adding liquid, “EMPTY” will appear. Once the liquid is added, the current temperature will display.

Adjusting the Temperature Off the Charging Base

1. Ensure there is liquid in the Mug.
2. Turn on the Mug by pressing and holding **nuwave** for 2 seconds.
3. Tap **nuwave** to cycle to the Target Temperature display.
4. Adjust the target temperature using the ▲/▼ arrows. The maximum temperature is 150°F.
5. The Mug will maintain the selected temperature.

98.6°F-PRECISION WARM MODE

Safely Warm Liquids to the Ideal Feeding Temperature

PRECISION WARM MODE is designed to quickly and accurately heat liquids to **98.6°F (37°C)**, the ideal temperature for safe and gentle warming without overheating. This mode is perfect for warming formula, milk, or other beverages that require delicate temperature control.

How to Set Precision Warm Mode (On the Charging Base)

1. Press and hold **Warm**, then press **Hot** on the Charging Base.
2. Two beeps will confirm the target temperature is set to 98.6°F (37°C).

How to Set Precision Warm Mode (Off the Charging Base)

1. Turn on the Mug by pressing and holding **nuwave** for 2 seconds.
2. Ensure there is liquid in the Mug.
3. Tap **nuwave** to cycle to the Target Temperature display.
4. Press and hold **nuwave**, then press the ▼ on the Mug.
5. Two beeps will confirm the target temperature is set to 98.6°F (37°C).

CHANGING THE DEFAULT TEMPERATURE

1. Select a mode desired: Green, Black, Coffee, Warm, or Hot.
2. Use the ▲/▼ arrows to adjust the temperature.
3. To save the new default temperature, press and hold the selected mode button for 1 second. The Mug will beep twice, confirming the change.

CHANGING THE DEFAULT TIMER FOR BREWING MODES

1. Select the desired mode: Green, Black, or Coffee. The target temperature will display.
2. Tap **nuwave** to cycle to the Timer display.
3. Use the ▲/▼ arrows to adjust the timer.
4. To save the new default timer, press and hold the selected mode button for 1 second. The Mug will beep twice, confirming the change.

TIPS FOR OPTIMAL BREWING

OPTIMAL BREWING TEMPERATURE

To help maintain higher temperatures while brewing coffee or tea, preheat both the Mug and the filter before starting the brew cycle.

1. **Preheat the Mug:** Pour approximately 3 oz of boiling water into the Mug (recommended for Coffee or Black modes), then place it on the Charging Base. This helps stabilize the Mug at or near 200°F before brewing begins.
2. **Preheat the Filter:** Pour boiling water over the empty filter to warm it. Once preheated, add the desired

Preheating both components minimizes heat loss and ensures a more consistent brewing temperature for optimal flavor extraction.

Tips for Coffee

1. **Let the Coffee Grounds Bloom:**
After pouring a small amount of hot water over the grounds, let them sit for 30–45 seconds before continuing. This releases trapped gases and helps improve flavor extraction.
2. **Use the Right Coffee-to-Water Ratio:**
Start with 2.5 to 4 tablespoons of coffee for 14 oz of water. Adjust to your preferred strength from there.

Tips for Tea

1. **Use Loose-Leaf Tea When Possible:** Loose-leaf tea allows for better water flow and expansion, resulting in a richer, more balanced flavor.
2. **Give Tea Leaves Room to Expand:**
For the best flavor, avoid overpacking the filter. Tea leaves need space to fully expand during brewing, which allows proper infusion and helps release their natural aroma and taste.

FILTER LID

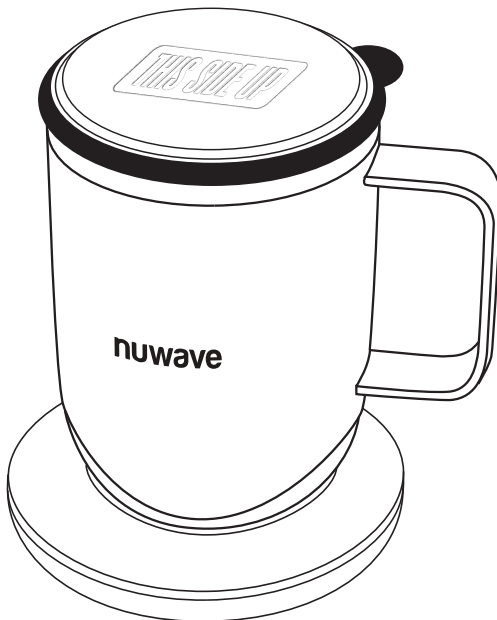
FILTER LID ORIENTATON

When using the filter lid during brewing, make sure the top side is facing upward.

- Placing the lid with the bottom side facing up can create suction, making it difficult to remove and potentially causing hot water to spill.
- Proper orientation allows for even brewing by giving the grounds or leaves space to expand.



When placed correctly, the angled edge will be visible on the top of the Mug.



CLEANING AND MAINTENANCE

MUG CLEANING INSTRUCTIONS

For best results, clean the Mug after each use.

- **ALWAYS** allow the Mug to cool completely before washing.
- Hand wash only using a mild non-abrasive cleaner and a soft cloth or no-scratch sponge.
- **DO NOT** use bleach, chlorine, or harsh scouring agents.

Important: The Mug is **NOT** dishwasher safe and should **NEVER** be submerged in water.

Charging Base Care

- Wipe the Charging Base with a slightly damp cloth to remove dust or residue.
- Dry immediately with a clean, soft towel.

IMPORTANT: Always ensure the Charging Base and pins remain dry.

Accessories

The Mug Lid, Filter, and Filter Lid are top-rack dishwasher safe.

- The Mug Lid may be soaked in warm, soapy water, then rinsed and dried completely.
- After cleaning, store the Mug Lid separately from the Mug in the open position to prevent odor and moisture retention.

Removing Stains

Option 1: Baking Soda Method

1. Create a paste using 3 parts baking soda to 1 part water.
2. Gently scrub the inside of the Mug with a soft cloth or toothbrush.
3. Let sit for up to 10 minutes, then rinse thoroughly.
4. Repeat as needed.

Option 2: Vinegar Method

1. Add 1 tablespoon of vinegar, then fill the Mug with water.
2. Let the solution sit for 10–15 minutes to sanitize and loosen buildup.
3. Wipe the interior with a soapy, damp cloth, rinse well, and dry thoroughly.

Important Reminder

- If the display shows “EMPTY,” allow the Mug to cool completely, then wash and dry it thoroughly.

Storage Guidelines

After cleaning, store all components in a cool, dry location. Avoid storing the Mug or charger in areas with high humidity, as this may affect overall performance and safety.

TROUBLESHOOTING GUIDE

Mug is not charging

Possible Cause: Improper Mug placement or issue with the power source.

1. Ensure the Mug is properly seated on the Charging Base.
2. Confirm the Charging Base is plugged into a compatible power source.

Note: The Charging Base will not function with power sources that provide 5V or 9V. Use a standard wall outlet or compatible adapter.

Mug is not connecting to the Charging Base

Possible Cause: Static interference or dirty contact points.

1. Wipe the bottom of the Mug and the surface of the Charging Base with a dry paper towel to remove static or debris.
2. Ensure both surfaces are clean and dry before placing the Mug on the Base..

Mug is not Heating, EMPTY is shown on the display

Possible Cause: Insufficient liquid detected.

1. The Mug will not heat unless it is sufficiently filled with liquid.
2. Add more liquid to the Mug to activate the desired heating function.

Temperature display seems inaccurate while brewing

Possible Cause: Room temperature ingredients inside the Mug.

1. Coffee grounds, tea leaves, and the filter can temporarily affect the Mug's temperature reading.
2. As the Mug continues to brew, the temperature reading will naturally adjust and display an accurate temperature.

Charging Base does not power on with power bank, laptop, or car charger

Possible Cause: Incompatible voltage output.

1. The Charging Base requires a power source of at least 12V to function properly.
2. Most power banks, laptops, and car chargers output 5V or 9V, which are not supported.
3. Use a standard wall outlet or a power source with the required voltage for proper operation.

E1 error code

The Mug is malfunctioning. Contact customer service.

E2 error code

The Mug is malfunctioning. Contact customer service.

E3 error code

The Mug is malfunctioning. Contact customer service.

LIMITED WARRANTY

THE MANUFACTURER WARRANTIES

Nuwave, LLC warrants the Nuwave® Hot Brew Temperature Control Mug will be free from manufacturer defects for 1 year from the date of purchase, under normal household use, and when operated in accordance with the Manufacturer's written instructions. The Limited Warranty covers the Original Purchaser only. The Manufacturer will provide the necessary parts and labor to repair the product at the Nuwave LLC Service Department. After the expiration of the warranty, the cost of the parts and labor will be the responsibility of the owner.

THE WARRANTY DOES NOT COVER

The Limited Warranty is voided if repairs are made by an unauthorized dealer or the serial number data plate is removed or defaced. Normal deterioration of finish due to use or exposure is not covered by this Warranty. This Limited Warranty does not cover failure, damages, or inadequate performance due to accidents, acts of God (such as lightning), fluctuations in electric power, alterations, abuse, misuse, misapplications, corrosive-type atmospheres, improper installation, failure to operate in accordance with the Manufacturer's written instructions, abnormal use, commercial or rental uses, or resold units. Nuwave LLC reserves the right to void the Limited Warranty, where allowable by law, for products purchased from an unauthorized dealer.

TO OBTAIN SERVICE

The owner shall have the obligation and responsibility to pay for all services and parts not covered by the warranty; prepay the freight to and from Service Department for any part or system returned under this warranty; and carefully package the product using adequate padding material to prevent damage in transit. The original container is ideal for this purpose. Include in the package the owner's name, address, daytime telephone number, a detailed description of the problem, and RGA (Return Goods authorization number). To obtain the RGA number, email us at:

Customer Service: assist@nuwavenow.com

Provide the product, model, & serial number and proof of date of purchase (a copy of the receipt) when making claims under this warranty.

MANUFACTURER'S OBLIGATION

The Manufacturer's obligation under this Limited Warranty is limited, to the extent allowable by law, to repairing or replacing any part covered by this Limited Warranty which upon examination is found to be defective under normal use. The Limited Warranty is applicable only within the continental United States and only to the original purchaser of the manufacturer's authorized channels of distribution.

THE LIMITED WARRANTY MAY NOT BE ALTERED, VARIED OR EXTENDED EXCEPT BY A WRITTEN INSTRUMENT EXECUTED BY THE MANUFACTURER. THE REMEDY OF REPAIR OR REPLACEMENT AS PROVIDED UNDER THIS LIMITED WARRANTY IS EXCLUSIVE. IN NO EVENT SHALL THE MANUFACTURER BE LIABLE FOR ANY CONSEQUENTIAL OR INCIDENTAL DAMAGES TO ANY PERSON, WHETHER OR NOT OCCASIONED BY NEGLIGENCE OF THE MANUFACTURER, INCLUDING WITHOUT LIMITATION, DAMAGES FOR LOSS OF USE, COSTS OF SUBSTITUTION, PROPERTY DAMAGE, OR OTHER MONEY LOSS.

Some states do not allow the exclusion or limitation of incidental or consequential damages, so the above limitation exclusions may not apply. This Limited Warranty gives specific legal rights, and there may also be other rights which vary from state to state. **EXCEPT AS OTHERWISE EXPRESSLY PROVIDED ABOVE, THE MANUFACTURER MAKES NO WARRANTIES EXPRESSED OR IMPLIED ARISING BY LAW OR OTHERWISE, INCLUDING WITHOUT LIMITATION, THE IMPLIED WARRANTIES OF MERCHANTABILITY AND FITNESS FOR A PARTICULAR PURPOSE TO ANY OTHER PERSON. READ YOUR OWNER'S MANUAL. IF YOU STILL HAVE ANY QUESTIONS ABOUT OPERATION OR WARRANTY OF THE PRODUCT, PLEASE CONTACT Nuwave LLC.**

LIMITED WARRANTY

DISPUTE RESOLUTION PROCEDURE

For disputes relating to use of the website or use or purchase of a Nuwave product or service (collectively "Disputes"), you agree to first contact Nuwave LLC at legal@nuwavenow.com. If we cannot resolve your dispute informally, any and all disputes shall be submitted to final and binding arbitration. You may start the arbitration process by submitting in writing a demand to the American Arbitration Association ("AAA") and sending a copy to Nuwave. Nuwave will pay all filing costs. A single arbitrator of the AAA will conduct the arbitration in a location convenient to you or by phone. The arbitrator's award will be binding and may be entered as a judgment in a court of competent jurisdiction. The arbitration will be conducted in accordance with the provisions of AAA's Commercial Arbitration Rules and Mediation Procedures in effect at the time of submission of your demand for arbitration. See https://www.adr.org/media/r1bgkegp/commercialrules_web-final.pdf. Except as may be required by law as determined by an arbitrator, no party or arbitrator may disclose the existence, content, or results of any arbitration hereunder without prior written consent of both parties.

A. WAIVER OF RIGHT TO SUE. By agreeing to arbitration, you understand that, to the maximum extent permitted by law, you are agreeing to waive your right to file suit in any court, to a court hearing, a judge trial, or a jury trial.

B. CLASS ACTION WAIVER. To the maximum extent permitted by law, you expressly agree to refrain from bringing or joining any claims in any representative or class-wide capacity, including but not limited to, bringing or joining any claims in any class action or class-wide arbitration.

C. OPT OUT PROCEDURE. To request to opt out of arbitration you must contact Nuwave LLC at legal@nuwavenow.com, Nuwave LLC, 560 Bunker Ct., Vernon Hills, IL 60061, U.S.A. You will have thirty (30) days from the date of product delivery to opt out of arbitration with respect to any dispute arising out of or relating to use or purchase of any Nuwave product. If more than 30 days have passed, you are not eligible to opt out of arbitration and will have waived your right to sue or participate in a class action with respect to the dispute arising out of your purchase or use of a Nuwave product. For any dispute arising out of your use of Nuwave's website, you have thirty (30) days from the date you provided information to the website to opt out of arbitration. If more than 30 days have passed, you are not eligible to opt out of arbitration and you will have waived your right to sue and participate in a class action with respect to the dispute arising out of your use of Nuwave's website.

D. SOME MATTERS ARE NOT SUBJECT TO ARBITRATION. Notwithstanding the foregoing, the following shall not be subject to arbitration and may be adjudicated only in the state and federal courts of Illinois: (i) any dispute, controversy, or claim relating to or contesting the validity of our intellectual property rights and proprietary rights, including without limitation, patents, trademarks, service marks, copyrights, or trade secrets; (ii) an action by a party for temporary, preliminary, or permanent injunctive relief, whether prohibitive or mandatory, or other provisional relief; or (iii) interactions with governmental and regulatory authorities. You expressly agree to refrain from bringing or joining any claims in any representative or class-wide capacity, including but not limited to, bringing or joining any claims in any class action or any class-wide arbitration.

Para la versión en español de este manual,
visita www.nuwavenow.com.

www.nuwavenow.com



Scan code for important product information and updates.

Questions or Concerns?

Customer Service: assist@nuwavenow.com

1-888-502-7805

Mon-Fri 7:30am-4:30pm CST

FOR HOUSEHOLD USE ONLY

DC20V / 2.5A / 50 Watts

Model:

80110CT

For patent information please go to:

www.nuwavenow.com/legal/patent

Designed & Developed in USA

Nuwave LLC

560 Bunker Ct.

Vernon Hills, IL 60061, U.S.A.

Made in China

©2025 • All Rights Reserved.

Item No: BM80110CT

V1-YK

08-15-25