

ALL-IN-ONE KITCHEN SET / KCC-1400

Dual Mount Single Bowl Stainless Steel Kitchen Sink, Commercial Pull-Down Faucet in Stainless Steel Finish, Stainless Steel Grid, Stainless Steel Strainer

Kräus®

SPECIFICATION SHEET

INCLUDED WITH COMBO

Faucet KPF-1610SFS
 Kitchen Sink KWT310-33/18
 Strainer ST-1
 Grid Model No. KBG-UN1-33
 Colander CS-6
 Drain Cap STC-2
 Cutting Board KCB-WS103AC
 Soap Dispenser Hole Cap KP22189
 Installation Template
 Mounting Hardware

SINK FEATURES

- 18 Gauge Stainless Steel Construction
- 3.5mm Thick Deck
- Dual Mount Installation
- Single Bowl Sink
- Rear Off-Set Drain
- Required Minimum Cabinet Size: 36" Left to Right, 24" Front to Back
- 3 1/2" Drain Opening
- NoiseDefend Undercoating and Sound Dampening Pads

FAUCET FEATURES

- Commercial Style Pull Down Faucet
- Metal Body
- Lead Free Braided Nylon Waterway
- 180° Swivel Spout
- Flow Rate: 1.8 gpm (6.8L/min) @ 60 psi
- Dual Function Sprayhead - Spray/Stream
- Silicone Nozzles
- 35mm Ceramic Cartridge
- 26.5" Integrated Nylon Waterlines
- Dome Shaped Screen Washer
- Quick Weight
- Quick Connect Sprayer Hose
- Connections 3/8"
- Max Deck Thickness: 1 1/2"
- TPI of aerator in the Sprayer - M24*1

CODES/STANDARDS:

Sink Certification

cUPC (ASME A112.19.3/CSA B45.4)

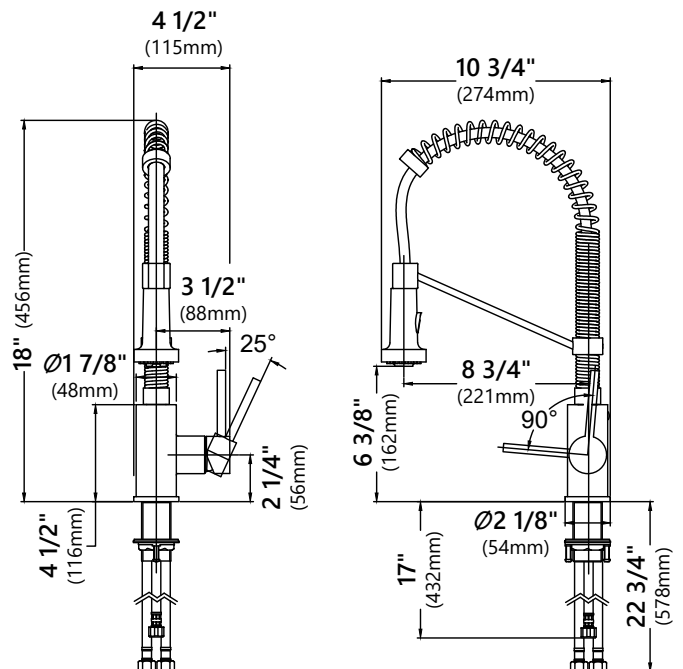
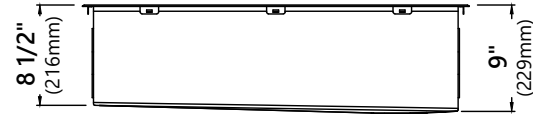
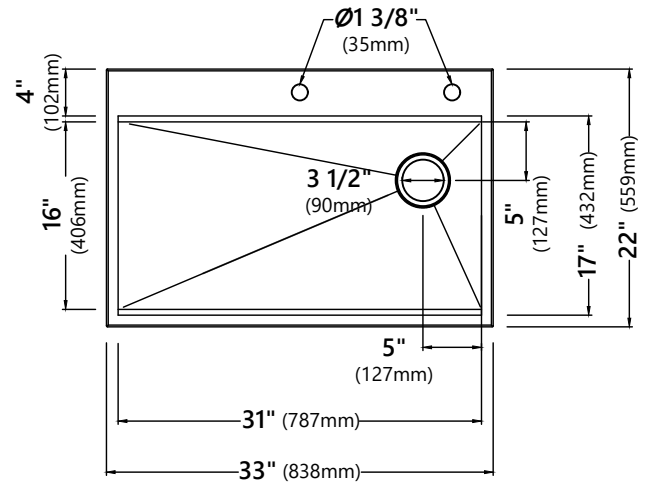
Faucet Certification

cUPC (ASME A112.18.1/CSA B125.1)

NSF/ANSI Standard 61 and 372 certified by IAPMO
 AB1953, MASS, FTC, DOE, CEC, ADA

Kraus Lifetime Limited Warranty

See website for details



ALL-IN-ONE KITCHEN SET / KCC-1400

Dual Mount Single Bowl Stainless Steel Kitchen Sink, Commercial Pull-Down Faucet in Stainless Steel Finish, Stainless Steel Grid, Stainless Steel Strainer

Kräus®

SPECIFICATION SHEET

GRID FEATURES

- Commercial Grade Stainless Steel Construction
- Protects Bottom of Sink from Daily Wear and Tear
- Rubber Feet Provide Additional Protection

STRAINER FEATURES

- Premium Stainless Steel Construction
- Fits Standard 3 1/2" or 4" Drain Opening
- Open/Close Stopper Prevents Debris from Clogging Drain Pipe

SOAP DISPENSER HOLE CAP FEATURES

- Premium Stainless Steel Construction
- Fits Standard Soap Dispenser Hole Opening

DRAIN CAP FEATURES

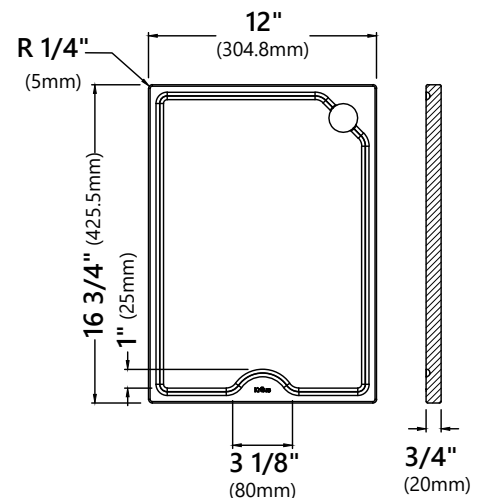
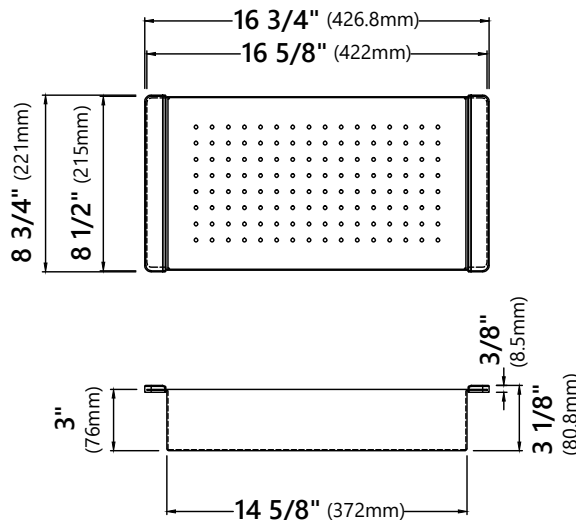
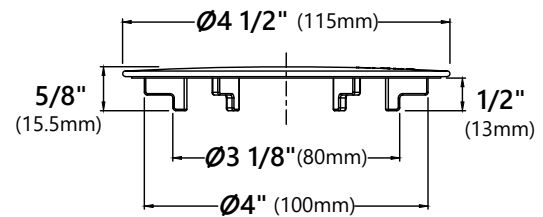
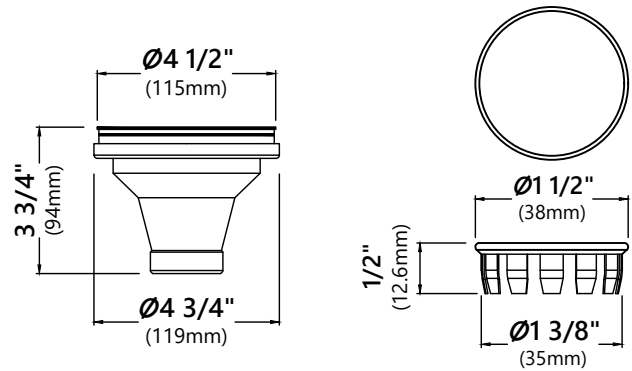
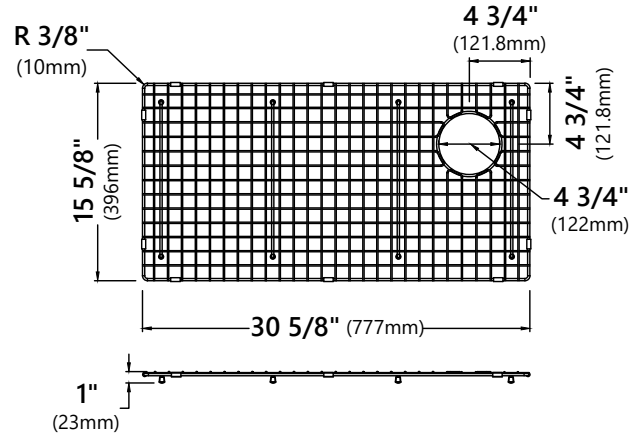
- Premium Stainless Steel Construction
- Fits Standard 3 1/2" Drain Opening
- Allows Water to Drain Easily When Installed
- Conceals Garbage Disposal and Waste Fittings for a Seamless Look

COLANDER FEATURES

- Chrome-Plated T-304 Stainless Steel Construction
- Multi-Functional Kitchen Accessory
- Dishwasher Safe

CUTTING BOARD FEATURES

- Designed to Use Over the Sink and On the Counter
- Non-slip Grip Feet Insure Stability for Use On the Counter
- Outer Groove Traps Liquids to Prevent Messy Counter
- BPA-free and FDA-approved



Kraus One Year Limited Warranty
See website for details