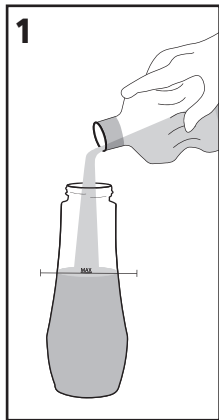
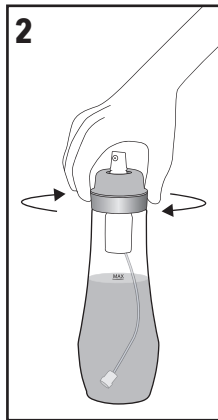


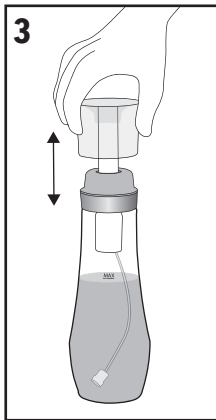
Oil Pump Instructions



1
Fill bottle up to the fill line.
If flavoring is added, only use dry herbs and spices.



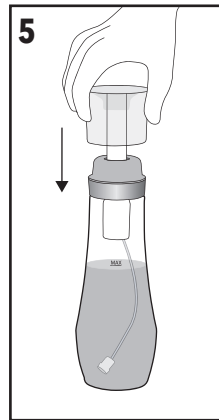
2
Tightly twist on top to ensure this is a good seal.



3
Pump the plastic top up and down to create pressure inside of the bottle until there is strong resistance. The bottle will not spray unless it is pumped first.



4
Gently press down on spray button to spray oil.
Step 3 may need to be repeated if spraying large amounts.



5
Replace cap on top for storage. If Pump cap will not close completely, unscrew top to release pressure inside bottle and then retighten. Cap should now fit securely.