

BaBylissPRO®

Operating Instructions
Model FX890 Series
Dual Interchangeable
Lithium Battery Clipper



For your safety and continued enjoyment of this product, always read the instruction book carefully before using.



Operating Instructions
Model FX890 Series
Dual Interchangeable
Lithium Battery Clipper



Afin que votre appareil vous procure en toute sécurité beaucoup de satisfaction, lire attentivement le manuel d'utilisation avant de l'utiliser.
Para su seguridad y para disfrutar plenamente de este producto, siempre lea atentamente las instrucciones antes del uso.

BaBylissPRO®

IMPORTANT SAFETY INSTRUCTIONS

When using electrical appliances, especially when children are present, basic safety precautions should always be taken, including the following:

READ ALL INSTRUCTIONS BEFORE USING KEEP AWAY FROM WATER

DANGER — Any appliance is electrically live, even when the switch is off. To reduce the risk of death or injury by electric shock:

1. **Always unplug appliance from electrical outlet immediately after using (except when charging unit).**
2. Do not place or store appliance where it could fall or be pulled into a tub or sink.
3. Do not use appliance while bathing or in the shower.
4. Do not place appliance in, or drop into water or other liquids.
5. **If appliance has fallen into water, do not reach for it. Unplug immediately.**
6. Unplug this appliance before cleaning.

WARNING — To reduce the risk of burns, electric shock, fire, or injury to persons:

1. **Never leave a plugged-in appliance unattended.**
2. Close supervision is required when this appliance is used by, on, or near children, persons with limited physical, sensory, or mental capabilities or invalids.
3. Use appliance only for its intended use as described in this manual. Use only attachments recommended by the manufacturer. Do not use an extension cord to operate the appliance.
4. **Never operate the appliance if it has a damaged cord or plug, is not working properly, or has been dropped, damaged, or dropped into water. Return the appliance to a BaBylissPRO Service Center for examination and repair.**
5. Keep the appliance cord away from heated surfaces.
6. Do not pull, twist or wrap the cord around the appliance.

7. Never drop or insert any object into any opening on the appliance.
8. Do not place the appliance on any surface while it is operating.
9. Do not use the appliance with a damaged or broken comb or with teeth missing from the blades, as injury may result. Before each use, make certain the blades are aligned properly and oiled.
10. Make sure the switch is in the OFF position when the clipper is not operating.
11. Do not use the appliance outdoors or where aerosol (spray) products are being used or where oxygen is being administered.
12. Do not crush, heat above 212°F (100°C) or incinerate the appliance due to risk of fire, explosion or burns.
13. Always attach plug to appliance first, then to outlet. To disconnect, turn all controls to OFF position then remove from outlet.
14. Use of a charger not sold by BaBylissPRO may result in risk of fire, electric shock, or injury to person.
15. Do not disassemble charger. Incorrect reassembly may result in a risk of electric shock or fire. When repair is required, send or take it to a BaBylissPRO Authorized Service Center.
16. The batteries for this clipper are designed to provide maximum trouble-free life. However, like all batteries, they will eventually wear out. Do not attempt to replace the batteries. When repair or replacement is required, contact a BaBylissPRO Authorized Service Center.
17. Batteries can be harmful to the environment if disposed of improperly. Many communities offer recycling or battery collection. Contact your local government about disposal practices in your area.
18. **WARNING:** Never touch both terminals on clipper with metal objects and/or body parts, as short circuit may result. Keep away from children. Failure to comply with these warnings could result in fire or serious injury.
19. This appliance is intended for clipping purposes only.
20. During use, do not place or leave the appliance where it is expected to be: A) Subject to damage by an animal or B) exposed to the weather.

SAVE THESE INSTRUCTIONS

OPERATING INSTRUCTIONS

CHARGING STAND

To charge, plug charging stand into 100-240V, 50/60 cycle AC electrical outlet or as noted on the unit. Place a battery into either pocket on the charging stand. The battery has electrical contacts that touch electrical contacts in the charger. The weight of the battery unit will provide sufficient contact. Before using your clipper for the first time, make sure the battery has been fully charged. Note that it is normal for the battery and charging stand to feel warm to the touch when charging.

AUTOMATIC CHARGING MANAGEMENT

One Battery – 2.4A Fast Charging

Two Batteries – 1.2A Normal Charging

Blue/Red LED Charging Indicators

Charging – Blue Heartbeat (1 Cycle/4 Seconds)

Fully Charged – Blue Light ON

Error – Red Flashing Light (More Than 4 Flashes/Second)



1. Before using the clipper for the first time, charge battery continuously for 3 hours. Maximum battery capacity will only be reached after 3 charging and discharging cycles.

2. Make sure the switch on the clipper is in the OFF position. Remove battery from clipper and drop into charging stand.

3. Plug the charging stand into any electrical outlet (at the voltage listed on the label affixed to the charging stand). The charging indicator will light up blue and start flashing to indicate that the charging has begun. Charging is complete after 3 hours — the light will go from flashing to a solid blue to indicate charging is complete.

4. The charging stand may become warm while charging. This is normal.

5. Preserving the batteries: In order to maintain the optimum capacity of the rechargeable batteries, the batteries should be recharged for 3 hours approximately every 6 months.

6. If the charging light starts to flash red rapidly (more than 4 flashes per second), the appliance is faulty. If this happens, stop charging, remove the plug from the outlet and contact an Authorized Service Center.

FEDERAL COMMUNICATIONS COMMISSION NOTICE

WARNING: Changes or modifications to this unit not expressly approved by the party responsible for compliance could void the user's authority to operate the equipment.

This device complies with Part 15 of the FCC Rules. Operation is subject to the following two conditions: (1) This device may not cause harmful interference, and (2) This device must accept any interference received, including interference that may cause undesired operation.

NOTE: This equipment has been tested and found to comply with the limits for a Class B digital device, pursuant to Part 15 of the FCC Rules. These limits are designed to provide reasonable protection against harmful interference in a residential installation. This equipment generates, uses and can radiate radio frequency energy and, if not installed and used in accordance with the instructions, may cause harmful interference to radio communications. However, there is no guarantee that interference will not occur in a particular installation. If this equipment does cause harmful interference to radio or television reception, which can be determined by turning the equipment off and on, the user is encouraged to try to correct the interference by one or more of the following measures:

- Reorient or relocate the receiving antenna.
- Increase the separation between the equipment and receiver.
- Connect the equipment into an outlet on a circuit different from that to which the receiver is connected.
- Consult the dealer or an experienced radio/TV technician for help.

SUPPLIER'S DECLARATION OF CONFORMITY

Brand: BaBylissPRO®

Model No.: FX890

Description: Clipper

Responsible Party: Conair LLC

1 Cummings Point Road
Stamford, CT 06902
(203) 351-9000

Standards: FCC Part 15 Subpart B, ANSI C63.4-2014

This device complies with Part 15 of the FCC Rules. Operation is subject to the following two conditions:

(1) This device may not cause harmful interference, and (2) This device must accept any interference received, including interference that may cause undesirable operation.

DATE OF ISSUE: 00/00/2021

ON/OFF SWITCH

To operate, simply slide switch to ON (marked "I"). To stop operation, set to the OFF (marked "O") position.

VERY IMPORTANT: Blades must be cleaned and oiled on a regular basis for proper functioning. Failure to regularly clean and oil the blades will void the warranty.

USER MAINTENANCE INSTRUCTIONS

MAINTENANCE OF THE BLADES

Always apply oil to the blades before and after use. This will ensure maximum cutting performance and proper maintenance. Hold the clipper away from your body in a downward position, and apply a drop of BaBylissPRO lubricating oil on the front and sides of the cutter blade. Wipe off excess oil with a soft, dry cloth.

HOW TO USE COMB ATTACHMENTS

To use the comb attachments, turn the clipper to "O" position. Slide the comb attachment onto the top of the clipper blades and then pull down and over the back of the blade. To remove, pull up on the back of the comb attachment and then pull away from the blade.



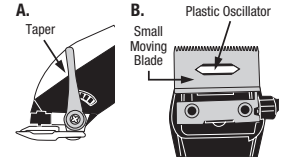
REPLACEMENT (REMOVAL) OF BLADE SET

Step 1. Unplug the unit and adjust the taper (see illustration A).

Step 2. Remove the screws and fixed blade. Save the screws.

Step 3. Lift off the small moving blade and replace it with the new one on the plastic oscillator (see illustration B).

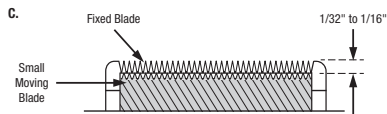
Step 4. Replace the fixed blade using the screws and lightly tighten them. Adjust the teeth to a gap of 1/32" (1 mm) to 1/16" (1.5 mm) with the small moving blade as centered and as parallel as possible to the fixed blade's teeth (see illustration C).



IMPORTANT NOTE:

The top edge of the fixed blade must be a minimum of 1/32" (1 mm) higher than the top edge of the moving blade and as centered as possible. This is important so that the moving blade does not come in contact with the skin.

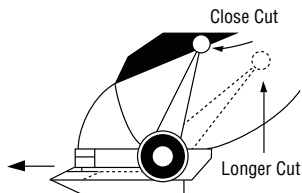
Be sure to add a few drops of BaBylissPRO lubricating oil to the blades before running. Don't forget to tighten the screws after the blades have been aligned.



ADJUSTABLE TAPER LEVER

The taper lever is positioned at your thumb. You can hold the clipper in your hand and adjust the lever at the same time – while you are clipping.

The taper lever adjusts the closeness of the cut from a close cut with the taper lever in the up position to a longer length cut with the taper lever in the down position. To increase cutting length, slowly push the lever down. To cut closer, push the lever up. As different cutting edges are used in each setting, using the taper lever lengthens the life of the clipper blades. Too much hair can slow down the hair clipper. Keep the clipper on remove hair. Then push the taper lever back and forth quickly for several times. If you do this every time, especially after frequent hair cutting, the clipper blades should remain free of cut hair. Oil the blades after the above procedures.



HAIR POCKET DOOR

The top housing of the FX890 clipper has a removable magnetic door integrated into the top housing – allowing for easy access to and cleaning of critical moving parts.

To remove the magnetic door, place fingers on the side tabs of the magnetic door and pull straight away from the unit.

To clean internal moving parts, use compressed air or included small cleaning brush to clear out



hair from the housing after the magnetic door has been removed.

Once finished with cleaning the moving parts of the clipper unit, carefully place the magnetic door back in its proper position. The magnets should pull the door back into place.

BATTERY REMOVAL AND INSTALLATION

The FX890 clipper features removable and rechargeable batteries, so you can cut and style for extended amounts of time with minimal interruption.

Make sure the switch is in the OFF position before remove or install batteries.

To remove the battery, press on the two tabs towards the bottom of the unit and pull the battery out of the bottom of the unit.

To install a new battery, line up the tabs of the charged battery with the sides of the unit and slide up into the housing, pressing firmly until battery clicks into place.



BATTERY INDICATORS

Extra Low Battery - Red Flashing Light

Low Battery - Blue Flashing Light

Unit On - Blue Light

Error - Red Flashing Light (More than 4 Flashes/Second)

WARNING — Make sure keyway slots are lined up before pushing battery all the way in. Do not force battery in if any resistance is felt.

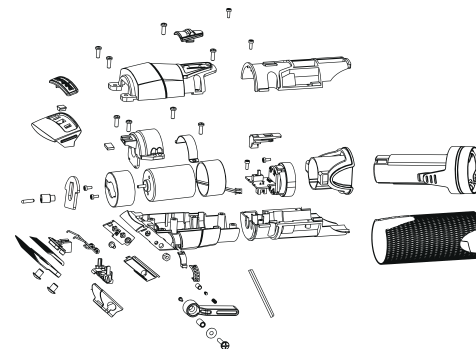
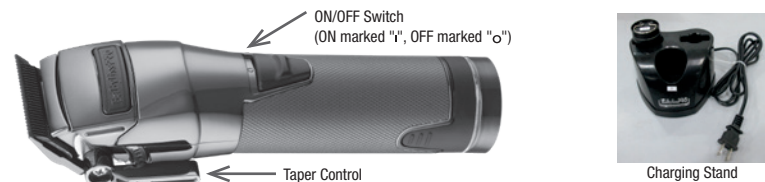
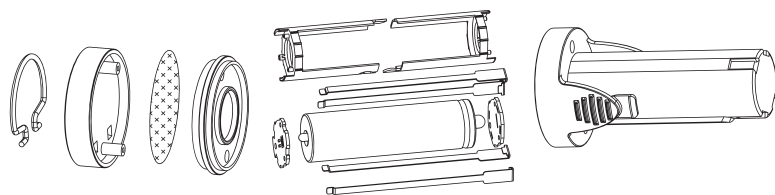
DISPOSAL OF LITHIUM-ION BATTERY

- The battery is to only be replaced by a BaBylissPRO Authorized Service Center.
- The battery must be removed from the appliance before it is recycled.
- The battery is to be recycled as a lithium-ion battery.

This clipper has a lithium-ion battery. To protect the environment, these batteries should be removed and properly disposed of when the unit is no longer operating. To remove the battery block for disposal or recovery, follow these instructions:

1. The batteries in this clipper set are protected in a plastic housing.
2. Press on tabs and pull battery housing out of clipper.
3. No further disassembly of the battery unit is required.
4. Take to an authorized battery recycling center, and recycle entire battery unit.

CONTAINS LITHIUM-ION BATTERY. MUST BE COLLECTED, RECYCLED OR DISPOSED OF PROPERLY. DO NOT DISPOSE OF IN THE MUNICIPAL WASTE.



PRODUCT FEATURES

- High-Torque 6800 RPM Brushless Motor
- Dual Lithium Interchangeable Batteries
- Dual Battery Charging Stand
- Magnetic, Removable Hair Pocket Door
- LED Ring Light Battery Indicator
- All-Metal Housing / Knurled Barbell Grip
- Black DLC Fade Blade
- Zero Gap Adjustable
- 5-Detent Locking Taper Control
- Detent Hanging Hook
- 8 Premium Metal Clip Guards

BEFORE USING THE CLASS 2 POWER SUPPLY, READ THESE INSTRUCTIONS CAREFULLY

Use only with charging stand Model No. FX890CB which is provided.

Rated input voltage: 100-240V ~, 50/60Hz 0.4A

Rated output: 4.5V DC 2.5A

OPERATION

1. For dry location use only. Do not expose to water.
2. When not in use, unplug unit completely.
3. Unit will become warm during operation.

CAUTION

1. Dry location use only. Do not expose to liquids, vapor, or rain.
2. Ensure charging stand is plugged into the outlet before charging batteries.
3. Do not operate any appliance that has a damaged output cord or housing.
4. Always unplug the unit before cleaning or when not in use.
5. The included adapter automatically adjusts to the input voltage. For connection to power supply not in the USA, use an attachment plug adapter (not included) of the proper configuration for power outlet. DO NOT USE A VOLTAGE CONVERTER.

BATTERY CHARGING PRECAUTIONS

- Avoid charging the battery at temperatures below 41° F (5° C) or above 95° F (35° C).
- Avoid charging the battery in direct sunlight or near a radiating heat source.
- Even though the clipper may not be used for an extended period, charge once a month to preserve battery life.
- The power cord cannot be replaced. If it is damaged, it should be discarded.

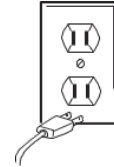
BATTERY OPERATING PRECAUTIONS

- This clipper has a removable rechargeable battery. Do not throw into fire, apply heat, or charge, use, or leave in a high-temperature environment.

CLIPPER OPERATING PRECAUTIONS

- This clipper has a removable rechargeable battery. Do not throw into fire, apply heat, or charge, use, or leave in a high-temperature environment.

**WARNING:
IF YOU THINK THE POWER IS OFF
WHEN THE SWITCH IS OFF,
YOU'RE WRONG.**



Everyone knows that electricity and water are a dangerous combination. But did you know that an electrical appliance is still electrically live even if the switch is off? If the plug is in, the power is on. So when you are not using the appliances, keep them unplugged.

This appliance has a polarized plug (one blade is wider than the other). As a safety feature, this plug will fit into a polarized outlet only one way. If the plug does not fit fully into the outlet, reverse the plug. If it still does not fit, contact a qualified electrician. Do not attempt to defeat this safety feature.

HASSLE-FREE 2-YEAR REPLACEMENT WARRANTY (U.S. AND CANADA ONLY)

BaBylissPRO will repair or replace (at our option) your unit free of charge for 24 months from the date of purchase if the appliance is defective in workmanship or materials.

To obtain service under this warranty, return the defective product to the service center listed below, with your purchase receipt. California residents need only provide proof of purchase and should call 1-800-326-6247 for shipping instructions. In the absence of a purchase receipt, the warranty period shall be 24 months from the date of manufacture.

ANY IMPLIED WARRANTIES, OBLIGATIONS, OR LIABILITIES, INCLUDING BUT NOT LIMITED TO THE IMPLIED WARRANTY OF MERCHANTABILITY AND FITNESS FOR A PARTICULAR PURPOSE, SHALL BE LIMITED IN DURATION TO THE 24-MONTH

DURATION OF THIS WRITTEN, LIMITED WARRANTY. Some states do not allow limitations on how long an implied warranty lasts, so the above limitations may not apply to you.

IN NO EVENT SHALL BABYLISPRO BE LIABLE FOR ANY SPECIAL, INCIDENTAL, OR CONSEQUENTIAL DAMAGES FOR BREACH OF THIS OR ANY OTHER WARRANTY, EXPRESSED OR IMPLIED WHATSOEVER. Some states do not allow the exclusion or limitation of special, incidental, or consequential damages, so the above limitation may not apply to you.

This warranty gives you specific legal rights, and you may also have other rights, which vary from state to state.

BaBylissPRO Clipper & Trimmer Service Program

Replacement parts may be available for your product.

Please contact our BaBylissPRO service department by calling 1-800-326-6247.

Please provide your product name/model number, details, date of purchase and part you require.

Service Center

BaBylissPRO Service Department
7475 N. Glen Harbor Blvd.
Glendale, AZ 85307
1-800-326-6247

©2022 BaBylissPRO
205 Shelhouse Drive
Rantoul, IL 61866

www.babylisspro.com

IF YOU LIVE OUTSIDE CANADA, PLEASE CONTACT YOUR LOCAL DISTRIBUTOR. CANADIAN TWO-YEAR REPLACEMENT WARRANTY

BaBylissPRO Canada is the exclusive Canadian distributor of this product. We offer the following excellent warranty on your professional electrical appliance. Keep your sales slip. This is your proof of purchase and your guarantee. This guarantee is not valid in case of abuse, misuse, alterations or repairs done by unauthorized persons. Before returning your defective electrical product, please read the warranty conditions listed in this brochure.

Should your professional electrical appliance possess a manufacturer's defect, it may be exchanged by your distributor or BaBylissPRO Canada at no charge within TWO YEARS from date of purchase, if the electrical appliance is accompanied by a proof of purchase.

If you are sending your defective appliance that is covered by this guarantee directly to the BaBylissPRO Canada Service Center, it must be accompanied by the following:

- 1) your dated sales slip
- 2) a precise description of the defect
- 3) your complete return address and daytime phone number
- 4) a \$10 money order for postage and handling

Please return your defective appliance to:

ATTN: BaBylissPRO Canada Service Center
CONAIR CONSUMER PRODUCTS ULC
100 Conair Parkway
Woodbridge, Ontario
L4H 0L2

This warranty applies only to residents of Canada. Products shipped from outside of Canada will not be processed and will not be returned to sender.

For questions regarding this product, you may call BaBylissPRO Canada Service Center at 1-800-363-0707, or email us at customerservice@dannyc.com.

21FA081990

IB-17257