



## IMPORTANT SAFETY RECALL

**NHTSA Recall # 25T008**

**June 30, 2025**

**Subject: RECALL NOTICE**

Dear Michelin Tire Owner,

This notice is sent to you in accordance with the requirements of the National Highway Traffic and Motor Vehicle Safety Act.

Michelin North America, Inc. and Michelin North America (Canada), Inc. have decided that certain Agilis CrossClimate C-Metric tires in the 185/60R15C size fail to conform to Federal Motor Vehicle Safety Standard No. 139 (Tire Endurance, "New Pneumatic Radial Tires for Light Vehicles") and Canadian Technical Standards Document (TSD) 139.

Tires that do not comply with regulatory requirements may increase the risk of a crash. Chunks of tread rubber may detach from the shoulder block. You are receiving this letter because our records indicate that you may have purchased one or more of these replacement tires at retail.

Tire identification information is molded into the sidewall of each tire, directly above the bead. For information that you will need to determine whether your tires are part of the recall or not, see section "Reading DOT Sidewall Markings" at the end of this document. If you have any questions concerning whether a tire is part of the recall or not, please contact Michelin Consumer Care at 1-888-971-3801 for assistance.

If your tires are part of the recall, please visit your local Michelin retailer. The Michelin retailer will have them removed and replaced with an equivalent tire, including mounting and balancing, free of charge. Michelin retailers may be located using the online dealer locator at [www.michelinman.com](http://www.michelinman.com). If your servicing Michelin retailer is unable to provide the service as described above without charge, or within a reasonable amount of time, please contact Michelin Consumer Care at 1-888-971-3801. This no charge replacement offer is valid through July 1, 2026.

If Michelin fails to address your concerns, you may submit a complaint to the Administrator, National Highway Traffic Safety Administration, 1200 New Jersey Avenue, S.E., Washington, DC 20590 or call the toll-free Auto Safety Hotline at 1-888-327-4236 (TTY 1-800-275-9171); or go to [www.nhtsa.gov](http://www.nhtsa.gov).

Commitment to safety, quality, and respect for the customer are our highest priorities. Please accept our sincerest apologies for any inconvenience that replacing these tires may cause. Thank you for your support in helping us to implement a successful recall.

Sincerely,

Nate Kirian  
Vice President, B2B Sales  
Michelin North America

Stephen Hoeft  
Vice President, B2C Sales  
Michelin North America

## READING DOT TIRE SIDEWALL MARKINGS

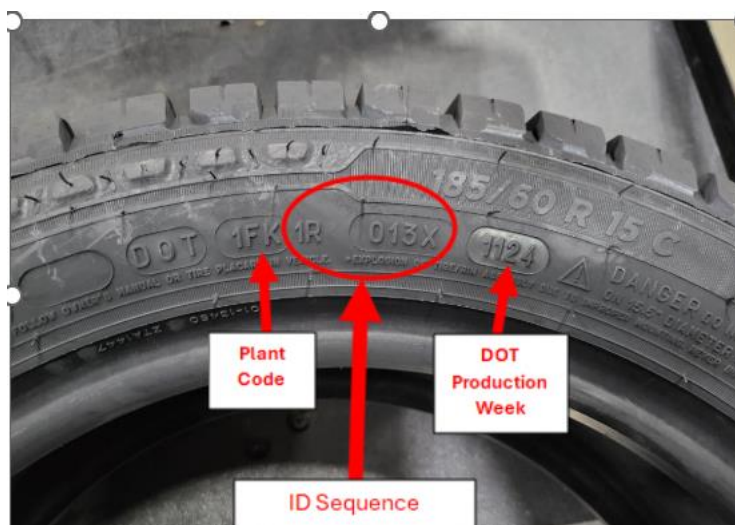
DOT tire sidewall markings serve as the tire's fingerprint and signify compliance with applicable safety regulations. The DOT markings can be found on the sidewall just above the wheel flange.

To find out if a tire is affected by the recall:

1. Determine if it matches the information below. If the information on the sidewall of your tires does not match these identifiers, it is not part of the recall.

CAI	MSPN	DIMENSION	PLANT CODE	ID SEQUENCE	DOT START DATE (WWYY)	DOT STOP DATE (WWYY)
121374	39451	185/60R15C 94T	FK or 1FK	1R013X	4023	1725

2. The following illustration shows the DOT information on a sample of the affected tires. The production DOT DATE codes is given by the last 4 digits of the TIN code, with the first two digits specifying the week of production and the second two digits specifying the year of production. For example, the production code of "1124" in the photo below refers to the 11<sup>th</sup> DOT week of the year 2024.



If you have any questions concerning the tire's DOT information, please contact Michelin Consumer Care at 1-888-971-3801.