

# COSORI®

## User Manual

### 5.0-Quart Rice Cooker

Model: CRC-R501-KUSR



#### Questions or Concerns?

support@cosori.com | 1-888-402-1684

Mon-Fri, 9:00 am-5:00 pm PST/PDT



Thank you for  
your purchase!



(We hope you love your new rice cooker as much as we do)



#### Get Creative with COSORI

Download the free VeSync app to access original recipes and video tutorials from the COSORI chefs, interact with our online community, and more!



Explore

our digital recipe gallery  
[cosori.com](http://cosori.com)



Enjoy

weekly, featured recipes  
made exclusively by our in-house chefs



#### CONTACT OUR CHEFS

Our helpful, in-house chefs are ready to assist you with any questions you might have!

Email: [recipes@cosori.com](mailto:recipes@cosori.com)

Toll-Free: 1-888-402-1684

Mon-Fri, 9:00 am-5:00 pm PST/PDT

On behalf of all of us at COSORI,

Happy cooking!

## Table of Contents

Package Contents	3
Specifications	3
Important Safeguards	4
Getting To Know Your Rice Cooker	7
Before First Use	9
Cooking with Your Rice Cooker	10
Care & Maintenance	17
Troubleshooting	18
Warranty Information	20
Customer Support	23

## Package Contents

1 x 5.0-Quart Rice Cooker
1 x Nonstick Inner Pot
1 x 2.3-Quart Steam Basket
1 x Standing Rice Paddle
1 x Measuring Cup
1 x Recipe Book
1 x User Manual

## Specifications

<b>Model</b>	CRC-R501-KUSR
<b>Power Supply</b>	AC 120V, 60Hz
<b>Rated Power</b>	1000W
<b>Capacity</b>	5 qt / 10 cup* (uncooked rice)
<b>Weight</b>	8.6 lb / 3.9 kg
<b>Dimensions</b>	12.3D x 10.6W x 9.2H in / 31.2D x 26.9W x 23.4H cm

\*using the included rice measuring cup, which is approximately 6.1 oz / 180 mL.

# READ AND SAVE THESE INSTRUCTIONS

## IMPORTANT SAFEGUARDS

---

Follow basic safety precautions when using your rice cooker.

Read all instructions.

### Key Safety Points

- **Do not** touch hot surfaces.
- **Do not** touch the steam vent or the area near the steam vent while cooking or in Keep Warm mode. **Do not** cover the area with a cloth.
- **Always** use heat-resistant gloves, pads, or oven mitts when moving the rice cooker, handling hot materials, and when placing items in or removing items from the rice cooker, including the inner pot, steam basket, and accessories.
- **Never** use the rice cooker without the inner pot in place.

### General Safety

- To protect against electric shock, **do not immerse the rice cooker**, cord, or plug in water or liquid.
- **Do not** use the rice cooker in water or under running water.
- Unplug when not in use and before cleaning. Allow to cool before putting on or taking off parts, and before cleaning or storage.
- **Do not** put food, liquid, or foreign objects on the heating plate.
- Ensure the heating plate is clean and the underside of the inner pot is dry before inserting the inner pot.
- Close supervision is necessary when the rice cooker is used by or near children.
- Children should be supervised to ensure that they **do not** play with the rice cooker.
- **Do not** allow children to clean or perform maintenance on the rice cooker.
- **Do not** use your rice cooker if it is damaged, not working, or if the cord or plug is damaged. Contact **Customer Support** (see page 23).
- This rice cooker does not contain any user-serviceable parts. For any repairs or servicing, contact **Customer Support** (see page 23).
- Using accessories or replacement parts not recommended by COSORI may cause injuries.
- **Do not** use outdoors.
- **Do not** place the rice cooker or any of its parts on or near hot gas or electric burners, or in a heated oven.
- **Do not** use the included accessories and inner pot in a microwave, on a stove or grill, or in an oven.
- Be extremely cautious when moving the rice cooker or inner pot if it contains hot oil or other hot liquids.
- The rice cooker is not intended to be operated by means of an external timer or separate remote-control system.
- This rice cooker is not intended for use by persons (including children) with reduced physical, sensory, or mental capabilities, or lack of experience and knowledge, unless

they have been given supervision or instruction concerning use of the rice cooker by a person responsible for their safety.

- **Only** use as directed in this manual. **Do not** use for any purpose other than its intended use.
- Not for commercial use. Household use **only**.

**Note:** See **Care & Maintenance** for instructions on how to clean accessories (page 17).

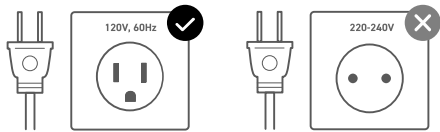
## While Cooking

- **CAUTION:** Risk of electric shock. Cook **only** in the removable inner pot. **Do not** put any liquid directly into the rice cooker.
  - Use on a flat, stable, heat-resistant surface away from heat sources or liquids.
  - The removable inner pot is extremely hot during use and can be heavy when full of ingredients.
  - Be careful when handling the inner pot or steam basket when it contains hot food, hot oil, or other hot liquids.
  - Place hot accessories on a heat-resistant surface or potholder.
  - **Do not** place anything on top of your rice cooker while it is operating. **Do not** store anything inside your rice cooker other than recommended accessories.
  - **Do not** touch the metal portion of the lid, hot surfaces, or any accessories during or immediately after cooking because they will be hot.
  - **Do not** place paper, cardboard, or plastic into your rice cooker, or any materials which may catch fire or melt.
- **Do not** use this rice cooker for deep frying with oil.
  - **Do not** block any ventilation openings. Hot steam is released through openings. Keep your hands and face clear of openings.
  - **Do not** leave the rice cooker unattended while in use.
  - The heating plate is subject to residual heat after use.

## Power & Cord

- This rice cooker uses a short power-supply cord to reduce the risk resulting from it being grabbed by children, becoming entangled in, or tripping over a longer cord.
- To turn the rice cooker off, tap **CANCEL** to stop cooking, then unplug. To unplug, grasp the plug and pull from the outlet. **Never** pull from the power cord.
- Avoid spillage on the supply cord connector.
- **Do not** spill water or liquid on the prongs of the plug.
- **Do not** use with an extension cord. This rice cooker is intended for countertop use only.
- **Do not** let the power cord hang over the edge of a table or counter or touch hot surfaces.
- **WARNING:** Spilled food can cause serious burns. Keep appliance and cord away from children. **Never** drape cord over edge of counter, **never** use outlet below counter, and **never** use with an extension cord.
- **Never** use an outlet below the counter when plugging in your rice cooker.

- Your rice cooker has a polarized plug (one prong is wider than the other), which fits into a polarized outlet only one way. If the plug does not fit, reverse the plug. If it still does not fit, **do not** use the plug in that outlet. **Do not** alter the plug in any way.
- Keep the rice cooker and its cord out of reach of children.
- Your rice cooker should **only** be used with **120V, 60Hz** electrical systems. **Do not** plug into another type of outlet.



- If the power supply cord is damaged, it must be replaced by Arovast Corporation or similarly qualified persons in order to avoid an electric or fire hazard. Please contact **Customer Support** (page 23).

## Electromagnetic Fields (EMF)

This rice cooker complies with all standards regarding electromagnetic fields (EMF). If handled properly and according to the instructions in this user manual, the appliance is safe to use based on scientific evidence available today.

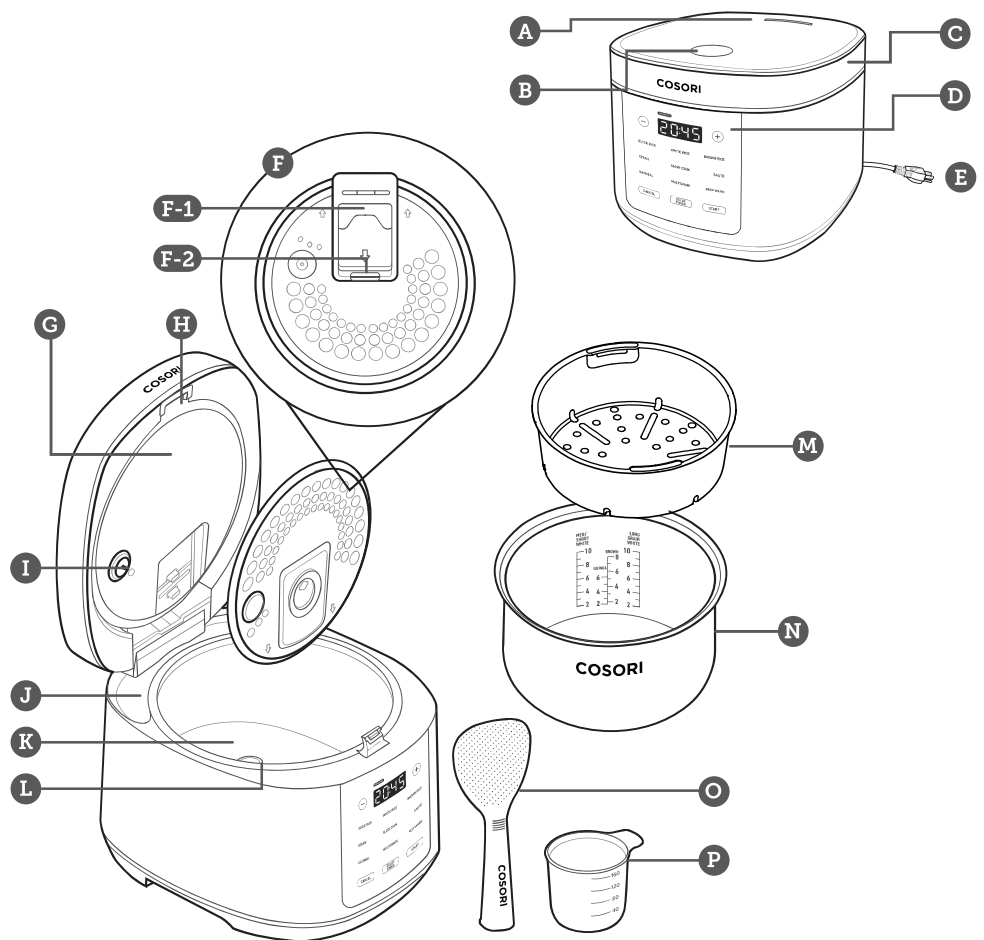
## SAVE THESE INSTRUCTIONS



**CAUTION: Hot surface.**

# GETTING TO KNOW YOUR RICE COOKER

## Rice Cooker Diagram

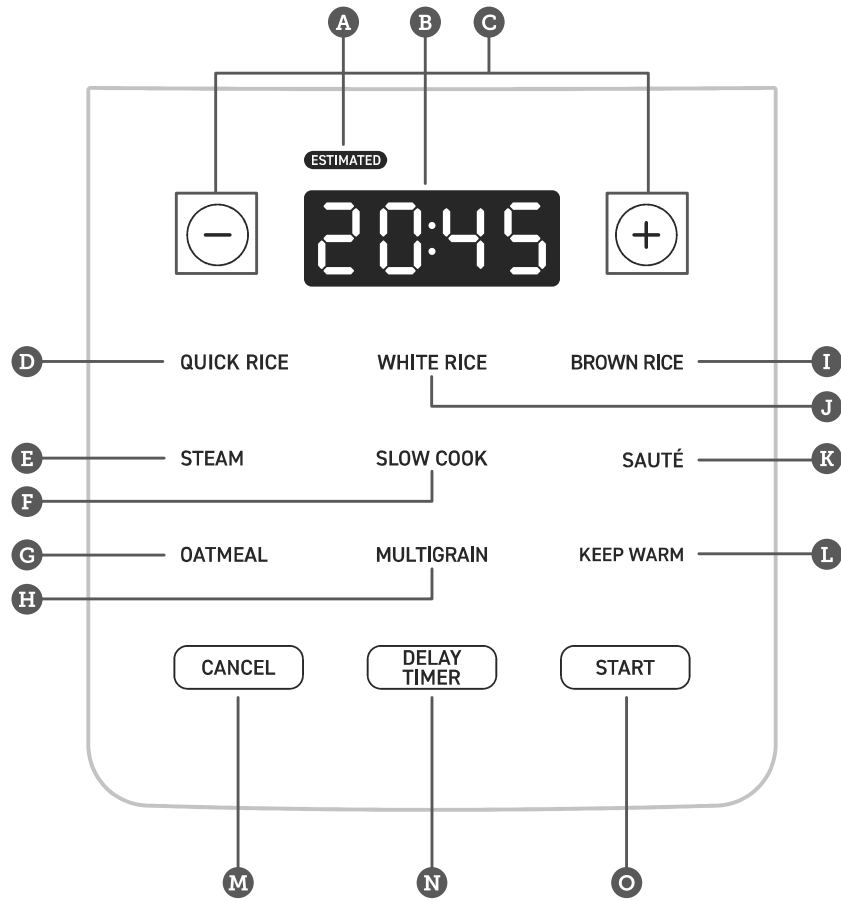


- A. Steam Vent
- B. Open Button
- C. Lid
- D. Control Panel
- E. Power Cord
- F. Inner Lid
  1. Steam Cap
  2. Steam Cap Release

- G. Radiator Plate
- H. Inner Lid Release Button
- I. Top Temperature Sensor
- J. Condensation Collectors
- K. Heating Plate
- L. Bottom Temperature Sensor

- M. 2.3-Quart Steam Basket
- N. Nonstick Inner Pot
- O. Standing Rice Paddle
- P. Measuring Cup

## Control Panel



- |                             |                       |
|-----------------------------|-----------------------|
| A. Estimated Time Indicator | I. Brown Rice Button  |
| B. Display                  | J. White Rice Button  |
| C. Increase/Decrease Time   | K. Sauté Button       |
| D. Quick Rice Button        | L. Keep Warm Button   |
| E. Steam Button             | M. Cancel Button      |
| F. Slow Cook Button         | N. Delay Timer Button |
| G. Oatmeal Button           | O. Start Button       |
| H. Multigrain Button        |                       |

# BEFORE FIRST USE

---

## Setting Up

1. Remove all packaging around and inside the rice cooker.
2. Place on a stable, level, heat-resistant surface. Keep away from areas that can be damaged by steam (such as walls or cupboards).
3. Remove the inner lid (see page 17).  
[Figure 1.1]
4. Wash the inner lid, steam cap, inner pot, steam basket, rice paddle, and measuring cup with hot, soapy water and a non-abrasive sponge.
5. Dry the parts and reinstall the inner lid. Place the inner pot in the rice cooker.

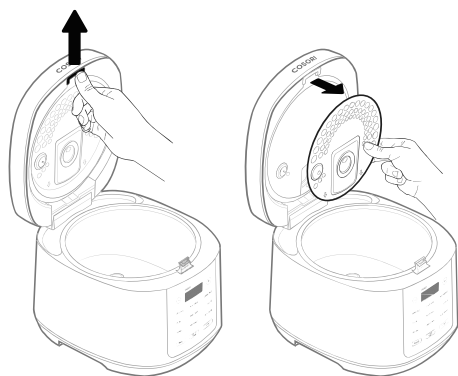


Figure 1.1

## Test Run

A test run will help you become familiar with your rice cooker, make sure it's working correctly, and clean it of possible residues.

1. Make sure there is no food or packaging in the rice cooker and plug it in.
2. Add water to the inner pot up to the "STEAM" water level marking. Close the lid.
3. Tap **STEAM**.
4. Tap **START** to start the Steam function.
5. The rice cooker will beep several times when finished.
6. Open the lid, carefully remove the inner pot, and discard the remaining water.
7. Let the rice cooker cool for 15 minutes. Wipe the inner lid and outside of the rice cooker with a dry cloth.

# COOKING WITH YOUR RICE COOKER

## Cooking Functions

Cooking functions are programmed with an ideal time and temperature for cooking certain rice and grains. For more information on each cooking function, see its individual section, or the **Cooking Functions Quick Reference Charts**.

### Note:

- Cook time is an estimate. Actual cook time may vary depending on factors such as amount of grain and water, room temperature, water temperature, and voltage.
- The inner pot **does not** have water level markings for 1 cup. If you are cooking 1 cup, use the "Grain : Water Ratio" column to determine the correct amount of water.

## Cooking Functions Quick Reference Charts

Grain Type	Function	Water Level Marking	Grain : Water Ratio	Cups*	Estimated Cook Time (Minutes)
Long Grain White Rice	WHITE RICE	LONG GRAIN WHITE	1 : 1¼	1	35-45
				5	45-55
				10	55-65
Medium/Short Grain White Rice	WHITE RICE	MED/SHORT WHITE	1 : 1¼	1	32-42
				5	41-51
				10	51-61
White Rice Porridge	OATMEAL	PORRIDGE	1 : 5	½	35-45
				1	45-55
				1½	50-60
				2	55-65
				2½	60-70
Quick White Rice**	QUICK RICE	LONG GRAIN WHITE	1 : 1¼	1	27-37
				5	39-49
				10	50-60
Jasmine White Rice	WHITE RICE	LONG GRAIN WHITE	1 : 1¼	1	35-45
				5	45-55
				10	55-65
Sushi Rice	WHITE RICE	MED/SHORT WHITE	1 : 1¼	1	32-42
				5	41-51
				10	51-61
Long Grain Brown Rice	BROWN RICE	BROWN	1 : 1½	1	59-69
				4	65-75
				8	72-82
Medium/Short Grain Brown Rice	BROWN RICE	BROWN	1 : 1½	1	60-70
				4	66-76
				8	73-83

Grain Type	Function	Water Level Marking	Grain : Water Ratio	Cups*	Estimated Cook Time (Minutes)
<b>Brown Rice Porridge</b>	<b>OATMEAL</b>	PORRIDGE	3 : 1/3	1/2	50-55
				1	55-60
				1 1/2	60-65
				2	70-75
				2 1/2	75-80
				3	80-85
				3 1/2	85-90
<b>Steel-Cut Oatmeal</b>	<b>OATMEAL</b>	STEEL CUT OATMEAL	1 : 3	1	35-40
				2	40-45
				4	45-50
<b>Rolled Oatmeal</b>	<b>OATMEAL</b>	ROLLED OATMEAL	1 : 3	1	20-25
				2	25-30
				4	30-35
<b>Quick Oatmeal</b>	<b>OATMEAL</b>	ROLLED OATMEAL	1 : 3	1	12-15
				2	15-20
				4	25-30
<b>Quinoa</b>	<b>MULTIGRAIN</b>	QUINOA	1 : 1 1/4	1	37-47
				3	42-52
				6	46-56
<b>Barley</b>	<b>MULTIGRAIN</b>	BARLEY	1 : 1 1/4	1	60-65
				3	65-70
				6	75-80
<b>Farro</b>	<b>MULTIGRAIN</b>	FARRO	1 : 1 1/4	1	60-65
				3	65-70
				6	70-75

\*1 rice measuring cup is approximately 6.1 oz / 180 mL.

\*\*The Quick Rice function cooks white rice faster but may result in slightly harder rice.

Function	Time Range	Default Time	Default Temperature
Slow Cook	5 min-24 hr	30 min	212°F / 100°C
Steam	1 min-1 hr	10 min	212°F / 100°C
Sauté	1 min-30 min	5 min	320°F / 160°C
Keep Warm	10 min-24 hr	-	158°F / 70°C
Delay Timer	10 min-24 hr	-	-

## White Rice / Brown Rice

1. Use the measuring cup to measure uncooked rice. Overfill the cup, then level it off to get an accurate measurement. [Figure 2.1]

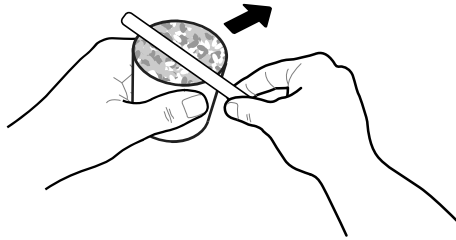


Figure 2.1

2. Place rice in a separate container or fine mesh sieve. Wash rice until the water appears clear.
3. Transfer washed rice to the inner pot and add the appropriate amount of water. You can reference the water level markings printed on the inside of the inner pot.
4. Place the inner pot in the rice cooker. Close the lid.
  - a. Make sure that the inner lid and steam cap are properly installed.
5. Plug in the rice cooker. Tap **WHITE RICE** or **BROWN RICE**. The estimated cook time will show on the display.
6. Optionally, tap **DELAY TIMER** and use **+** and **-** to delay cooking for up to 24 hours. Cooking will automatically start after counting down.
7. Tap **START** to start the cooking function.
8. The rice cooker will beep several times when finished and automatically switch to the Keep Warm function. The display will show how much time has passed since cooking finished. Tap **CANCEL** twice to stop the Keep Warm function.
  - a. Keep Warm can last up to 24 hours, but we recommend that you avoid leaving cooked rice in the rice cooker for more than 5 hours.

## Quick Rice

1. Use the measuring cup to measure uncooked rice. Overfill the cup, then level it off to get an accurate measurement.
2. Place rice in a separate container or fine mesh sieve. Wash rice until the water appears clear.
3. Transfer washed rice to the inner pot and add the appropriate amount of water. You can reference the water level markings printed on the inside of the inner pot.
4. Place the inner pot in the rice cooker. Close the lid.
  - a. Make sure that the inner lid and steam cap are properly installed.
5. Plug in the rice cooker. Tap **QUICK RICE**. The estimated cook time will show on the display.
  - a. The Quick Rice function cooks rice faster but the texture may be slightly harder.
6. Tap **START** to start the cooking function.
7. The rice cooker will beep several times when finished and automatically switch to the Keep Warm function. The display will show how much time has passed since cooking finished. Tap **CANCEL** twice to stop the Keep Warm function.
  - a. Keep Warm can last up to 24 hours, but we recommend that you avoid leaving cooked rice in the rice cooker for more than 5 hours.

## Oatmeal

1. Use the measuring cup to measure uncooked oats. Overfill the cup, then level it off to get an accurate measurement.
2. Place oats in the inner pot and add the appropriate amount of water. You can reference the water level markings printed on the inside of the inner pot.
3. Place the inner pot in the rice cooker. Close the lid.
  - a. Make sure that the inner lid and steam cap are properly installed.
4. Plug in the rice cooker. Tap **OATMEAL**.
5. Tap + and – to adjust the cook time.
6. Optionally, tap **DELAY TIMER** and use + and – to delay cooking for up to 24 hours. Cooking will automatically start after counting down.
7. Tap **START** to start the cooking function.
8. The rice cooker will beep several times when finished and automatically switch to the Keep Warm function. The display will show how much time has passed since cooking finished. Tap **CANCEL** twice to stop the Keep Warm function.
  - a. Keep Warm can last up to 24 hours, but we recommend that you avoid leaving cooked oatmeal in the rice cooker for more than 3 hours.

## Multigrain

1. Use the measuring cup to measure uncooked grains, such as quinoa. Overfill the cup, then level it off to get an accurate measurement.
2. Place grains in the inner pot and add the appropriate amount of water. You can reference the water level markings printed on the inside of the inner pot.
3. Place the inner pot in the rice cooker. Close the lid.
  - a. Make sure that the inner lid and steam cap are properly installed.
4. Plug in the rice cooker. Tap **MULTIGRAIN**. The estimated cook time will show on the display.
5. Optionally, tap **DELAY TIMER** and use **+** and **-** to delay cooking for up to 24 hours. Cooking will automatically start after counting down.
6. Tap **START** to start the cooking function.
7. The rice cooker will beep several times when finished and automatically switch to the Keep Warm function. The display will show how much time has passed since cooking finished. Tap **CANCEL** twice to stop the Keep Warm function.
  - a. Keep Warm can last up to 24 hours, but we recommend that you avoid leaving cooked grain in the rice cooker for more than 3 hours.

## Steam

1. Add water to the inner pot up to the "STEAM" water level marking.
2. Place food in the steam basket, then place the steam basket in the inner pot.
  - a. **Do not** overfill the steam basket.
3. Place the inner pot in the rice cooker. Close the lid.
  - a. Make sure that the inner lid and steam cap are properly installed.
4. Plug in the rice cooker. Tap **STEAM**.
5. Tap **+** and **-** to adjust the cook time.
6. Optionally, tap **DELAY TIMER** and use **+** and **-** to delay cooking for up to 24 hours. Cooking will automatically start after counting down.
7. Tap **START** to start the cooking function. "PrE" will show on the display and the rice cooker will begin preheating. When preheating is finished, the display will show the timer counting down.
8. The rice cooker will beep several times when finished and automatically switch to the Keep Warm function. The display will show how much time has passed since cooking finished. Tap **CANCEL** twice to stop the Keep Warm function.
  - a. Keep Warm can last up to 24 hours, but we recommend that you avoid leaving cooked food in the rice cooker for more than 3 hours.

## Slow Cook

1. Place food in the inner pot.
  - a. **Do not** fill past the 10-cup long grain white rice water level marking.
2. Place the inner pot in the rice cooker. Close the lid.
  - a. Make sure that the inner lid and steam cap are properly installed.
3. Plug in the rice cooker. Tap **SLOW COOK**.
4. Tap **+** and **-** to adjust the cook time.
5. Optionally, tap **DELAY TIMER** and use **+** and **-** to delay cooking for up to 24 hours. Cooking will automatically start after counting down.
6. Tap **START** to start the cooking function.
7. The rice cooker will beep several times when finished and automatically switch to the Keep Warm function. The display will show how much time has passed since cooking finished. Tap **CANCEL** twice to stop the Keep Warm function.
  - a. Keep Warm can last up to 24 hours, but we recommend that you avoid leaving cooked food in the rice cooker for more than 3 hours.

## Sauté

1. Place the inner pot in the rice cooker. You can leave the lid open or close the lid for faster preheating.
2. Plug in the rice cooker. Tap **SAUTE**.
3. Tap **+** and **-** to adjust the cook time.
4. Tap **START** to start the cooking function. "PRE" will show on the display and the rice cooker will begin preheating. When preheating is finished, the display will show the timer counting down.
  - a. You can add oil to the inner pot before or after preheating.
  - b. If food is added to the inner pot before preheating finishes, the countdown may not appear.
5. Place food in the inner pot to begin cooking.
6. When finished, tap **CANCEL** to stop the cooking function.

## Keep Warm

1. Place the inner pot in the rice cooker. Close the lid.
  - a. Make sure that the inner lid and steam cap are properly installed.
2. Plug in the rice cooker. Tap **KEEP WARM**.
3. Tap **+** and **-** to adjust the time.
4. Tap **START** to start the cooking function.

**Note:** After every cooking function (except "SAUTE"), the rice cooker will automatically switch to the Keep Warm function. The display will show how much time has passed since cooking finished. Tap **CANCEL** twice to stop the Keep Warm function.

## Delay Timer

1. Before cooking, tap **DELAY TIMER** to set a delay timer.
  - a. You **cannot** set a delay timer in "KEEP WARM", "SAUTE", or "QUICK RICE" functions.
2. Tap **+** and **-** to delay cooking for up to 24 hours.

**Note:** This is not a delayed start. The delay timer takes cook time into account, so food will finish cooking when the delay timer ends.

3. Tap **START** and cooking will automatically start after counting down.

## Auto Off

1. If no cooking function is selected, the rice cooker will turn off after 5 minutes of no operation. The display will turn off and **START** will be illuminated. [Figure 2.2]
2. Tap **START** to use the rice cooker.

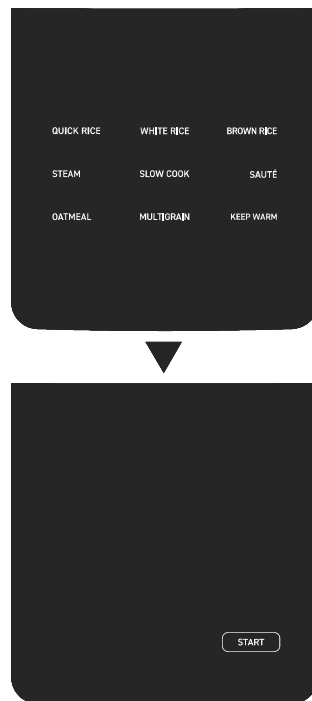


Figure 2.2

# CARE & MAINTENANCE

## Note:

- **Always** clean the inner pot and accessories after every use.
- The inner pot has a nonstick coating for easy cleaning.
- **Do not** use abrasive cleaners, metal scouring pads, or metal utensils on any part of the rice cooker, including inner pot and other accessories. These will scratch or damage their surfaces.
- This rice cooker does not contain any user-serviceable parts. For any repairs or servicing, contact **Customer Support** (see page 23).

1. Before cleaning, turn off and unplug the rice cooker and allow it to cool completely.
2. Wipe the outside and inside of the rice cooker with a moist cloth.
3. Press the Inner Lid Release Button, then pull the inner lid to remove it. If necessary, undo the Steam Cap Release to empty and clean the steam cap.
4. Wash the inner lid, steam cap, inner pot, steam basket, rice paddle, and measuring cup with hot, soapy water and a non-abrasive sponge. Soak if necessary.
  - a. Accessories are also dishwasher-safe on the top rack.
5. Dry the parts and reinstall the inner lid. Place the inner pot in the rice cooker.
6. Let all surfaces dry completely before plugging in or turning on the rice cooker.

## Detaching and Attaching the Inner Lid

### Detaching

1. Press the Inner Lid Release Button to detach the inner lid. [Figure 3.1]
2. Pull the inner lid out to remove it.

**Note:** Do not pull the inner lid or gasket without pushing the inner lid release button. This may cause the inner lid or outer lid to break.

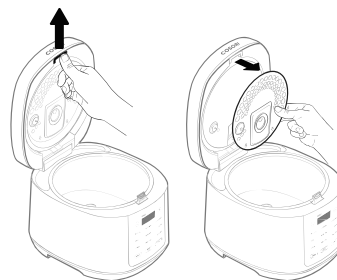


Figure 3.1

### Attaching

1. Position the inner lid so the side with steam cap is facing the outer lid.
2. Insert the tabs at the bottom of inner lid into the outer lid and push until it clicks into place. [Figure 3.2]

**Note:** Close the lid to make sure the inner lid is properly installed. The inner lid should not fall off or jam during closing.

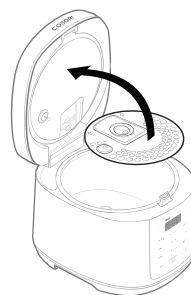


Figure 3.2

## Emptying the Steam Cap

1. Undo the Steam Cap Release located on the inner lid. **[Figure 3.3]**
2. Empty the water that is collected in the steam cap.
3. Clean the steam cap with hot, soapy water and a non-abrasive sponge.
  - a. If necessary, you can remove the steam cap for easy cleaning and drying.
4. To reassemble, insert the hinges into the slot and close the Steam Cap Release. **[Figure 3.4]**
  - a. Turn the inner lid upside down to make sure the steam cap is properly installed.



Figure 3.3

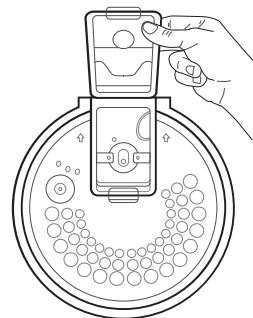


Figure 3.4

## Storage

1. Clean and dry the rice cooker and all accessories.
2. Place the inner pot in the rice cooker. Close the lid.
3. Store the rice cooker in an upright position. **Do not** store anything on top.

# TROUBLESHOOTING

Problem	Possible Solution
<b>The rice cooker will not turn on.</b>	Make sure the rice cooker is plugged into a powered outlet.
<b>The rice cooker has a plastic smell.</b>	Any rice cooker may have a plastic smell from the manufacturing process. This is normal. Follow the instructions for a <b>Test Run</b> (page 9) to decrease the plastic smell. If the plastic smell does not decrease, contact <b>Customer Support</b> (see page 23).
<b>Food is undercooked, too soft, or too hard.</b>	Make sure the food to water ratio is correct.
	Make sure you select the correct cooking function for the food you are cooking.
<b>Food boils over while cooking.</b>	Make sure the food to water ratio is correct.
	Make sure the inner lid and steam cap are properly installed.
<b>Display shows Error Code "E1\E3".</b>	There is an open circuit in the temperature monitor. Contact <b>Customer Support</b> (see page 23).
<b>Display shows Error Code "E2\E4".</b>	There is a short circuit in the temperature monitor. Contact <b>Customer Support</b> (see page 23).

If your problem is not listed, please contact **Customer Support** (see page 23).

# FEDERAL COMMUNICATION COMMISSION INTERFERENCE STATEMENT - PART 15

---

This device complies with Part 15 of the FCC Rules. Operation is subject to the following two conditions:

1. This device may not cause harmful interference, and
2. This device must accept any interference received, including interference that may cause undesired operation.

NOTE: This equipment has been tested and found to comply with the limits for a Class B digital device, pursuant to Part 15 of the FCC Rules. These limits are designed to provide reasonable protection against harmful interference in a residential installation. This equipment generates, uses and can radiate radio frequency energy and, if not installed and used in accordance with the instructions, may cause harmful interference to radio communications. However, there is no guarantee that interference will not occur in a particular installation. If this equipment does cause harmful interference to radio or television reception, which can be determined by turning the equipment off and on, the user is encouraged to try to correct the interference by one or more of the following measures:

- Reorient or relocate the receiving antenna.
- Increase the separation between the equipment and receiver.
- Connect the equipment into an outlet on a circuit different from that to which the receiver is connected.
- Consult the dealer or an experienced radio/TV technician for help.

**FCC Caution:** Any changes or modifications not expressly approved by the party responsible for compliance could void the user's authority to operate this equipment.

## **FCC SUPPLIER'S DECLARATION OF CONFORMITY (SDOC)**

Arovast Corporation hereby declares that this equipment is in compliance with FCC requirements. The declaration of conformity may be consulted in the support section of our website, accessible from [www.cosori.com](http://www.cosori.com)

# WARRANTY INFORMATION

---

<b>Product Name</b>	5.0-Quart Rice Cooker
<b>Model</b>	CRC-R501-KUSR
<i>For your own reference, we strongly recommend that you record your order ID and date of purchase.</i>	
<b>Date of Purchase</b>	
<b>Order ID</b>	

## COSORI Limited Product Warranty

Register your products at <https://warranty.cosori.com/warranty> to stay up to date with important product information such as product updates, limited warranties, usage and maintenance recommendations, and notifications concerning safety warnings or product recalls. Registration is not required to claim your limited warranty.

### Two (2) Year Limited Consumer Product Warranty

Arovast Corporation ("Arovast") warrants that the product shall be free from defects in material and workmanship for a period of **2 years from the date of original purchase** ("Limited Warranty Period"), provided the product was used in accordance with its use and care instructions (e.g. in the intended environment and under normal circumstances).

### Your Limited Warranty Benefits

During the Limited Warranty Period and subject to this limited Warranty Policy, Arovast will, in its sole and exclusive discretion, either (i) refund the purchase price if the purchase was made directly from the online COSORI store, (ii) repair any defects in material or workmanship, (iii) replace the product with another product of equal or greater value, or (iv) provide store credit in the amount of the purchase price.

### Who Is Covered?

This limited warranty extends only to the original consumer purchaser of the product and is not transferable to any subsequent owner of the product, regardless of whether the product transferred ownership during the specified term of the limited warranty. The original consumer purchaser must provide verification of the defect or malfunction and proof of the date of purchase to claim the Limited Warranty Benefits.

### Be Aware of Unauthorized Dealers or Sellers

This limited warranty does not extend to products purchased from unauthorized dealers or sellers. Arovast's limited warranty only extends to products purchased from authorized dealers or sellers that are subject to Arovast's quality controls and have agreed to follow its quality controls. Please be aware, products purchased from an unauthorized website or dealer may be counterfeit, used, defective, or may not be designed for use in your country. You can protect yourself and your products by making sure you only purchase from Arovast or its authorized dealers.

If you have any questions about a specific seller, or if you think you may have purchased your product from an unauthorized seller, please contact our Customer Support via [support@cosori.com](mailto:support@cosori.com).

### What's Not Covered?

- Normal wear and tear, including parts that might wear out over time (e.g. batteries, filters, cleaning brush, essential oil pads, etc.).
- If the proof-of-purchase has been altered in any way or is made illegible.
- If the model number, serial number or production date code on the product has been altered, removed or made illegible.
- If the product has been modified from its original condition.
- If the product has not been used

in accordance with directions and instructions in the user manual.

- Damages caused by connecting peripherals, additional equipment or accessories other than those recommended in the user manual.
- Damages or defects caused by accident, abuse, misuse, or improper or inadequate maintenance.
- Damages or defects caused by service or repair of the product performed by an unauthorized service provider or by anyone other than Arovast.
- Damages or defects occurring during commercial use, rental use, or any use for which the product is not intended.
- If the unit has been damaged, including but not limited to damage by animals, lightning, abnormal voltage, fire, natural disaster, transportation, dishwasher, or water (unless the user manual expressly states that the product is dishwasher-safe).
- Incidental and consequential damages.
- Damages or defects exceeding the cost of the product.

#### **Claiming Your Limited Warranty Service in 5 Simple Steps:**

1. Make sure your product is within the specified limited warranty period.
2. Make sure you have a copy of the invoice and order ID or proof-of-purchase.
3. Make sure you have your product. **DO NOT** dispose of your product before contacting us.
4. Contact our Customer Support team via support@cosori.com.
5. Once our Customer Support team has approved your request, please return the product with a copy of the invoice and order ID.

#### **Sole and Exclusive Remedy**

THE FOREGOING LIMITED WARRANTY CONSTITUTES AROVAST CORPORATION'S EXCLUSIVE LIABILITY, AND YOUR SOLE

AND EXCLUSIVE REMEDY, FOR ANY BREACH OF ANY WARRANTY OR OTHER NONCONFORMITY OF THE PRODUCT COVERED BY THIS LIMITED PRODUCT WARRANTY STATEMENT. THIS LIMITED WARRANTY IS EXCLUSIVE, AND IN LIEU OF ALL OTHER WARRANTIES. NO EMPLOYEE OF AROVAST CORPORATION OR ANY OTHER PARTY IS AUTHORIZED TO MAKE ANY WARRANTY IN ADDITION TO THE LIMITED WARRANTY IN THIS LIMITED PRODUCT WARRANTY STATEMENT.

#### **Disclaimer of Limited Warranties**

TO THE FULLEST EXTENT PROVIDED BY APPLICABLE LAW, EXCEPT AS WARRANTED IN THIS LIMITED PRODUCT WARRANTY POLICY, AROVAST CORPORATION PROVIDES THE PRODUCTS YOU PURCHASE FROM AROVAST CORPORATION "AS IS" AND AROVAST CORPORATION HEREBY DISCLAIMS ALL WARRANTIES OF ANY KIND, WHETHER EXPRESS OR IMPLIED, STATUTORY, OR OTHERWISE, INCLUDING BUT NOT LIMITED TO ANY WARRANTIES OF MERCHANTABILITY, NON-INFRINGEMENT, AND FITNESS FOR PARTICULAR PURPOSE.

#### **Limitations of Liability**

TO THE FULLEST EXTENT PROVIDED BY APPLICABLE LAW, IN NO EVENT WILL AROVAST CORPORATION, ITS AFFILIATES, OR THEIR LICENSORS, SERVICE PROVIDERS, EMPLOYEES, AGENTS, OFFICERS, OR DIRECTORS BE LIABLE FOR:

(a) DAMAGES OF ANY KIND ARISING OUT OF OR IN CONNECTION WITH PRODUCTS PURCHASED FROM AROVAST CORPORATION IN EXCESS OF THE PURCHASE PRICE PAID BY THE PURCHASER FOR SUCH PRODUCTS, OR

(b) INDIRECT, SPECIAL, INCIDENTAL, CONSEQUENTIAL, OR PUNITIVE DAMAGES EVEN IF AROVAST CORPORATION OR ONE OF ITS SUPPLIERS HAS BEEN ADVISED OF THE POSSIBILITY OR LIKELIHOOD OF SUCH DAMAGES.

AND REGARDLESS OF WHETHER CAUSED BY TORT (INCLUDING NEGLIGENCE), BREACH OF CONTRACT, OR OTHERWISE. OUR LIABILITY SHALL UNDER NO CIRCUMSTANCES EXCEED THE ACTUAL AMOUNT PAID BY YOU FOR THE DEFECTIVE PRODUCT, NOR SHALL WE UNDER ANY CIRCUMSTANCES BE LIABLE FOR ANY CONSEQUENTIAL, INCIDENTAL, SPECIAL OR PUNITIVE DAMAGES OR LOSSES, WHETHER DIRECT OR INDIRECT.

EXCEPT AS COVERED BY THIS LIMITED PRODUCT WARRANTY STATEMENT, AROVAST CORPORATION SHALL NOT BE LIABLE FOR COSTS ASSOCIATED WITH THE REPLACEMENT OR REPAIR OF PRODUCTS PURCHASED FROM IT, INCLUDING, BUT NOT LIMITED TO, LABOR, INSTALLATION, OR OTHER COSTS INCURRED BY THE USER AND, IN PARTICULAR, ANY COSTS RELATING TO THE REMOVAL OR REPLACEMENT OF ANY PRODUCT.

**OTHER RIGHTS YOU MAY HAVE**

SOME JURISDICTIONS DO NOT ALLOW FOR: (1) EXCLUSION OF IMPLIED WARRANTIES; (2) LIMITATION ON THE DURATION OF IMPLIED WARRANTIES; AND/OR (3) EXCLUSION OR LIMITATION OF INCIDENTAL OR CONSEQUENTIAL DAMAGES; SO THE DISCLAIMERS IN THIS POLICY MAY NOT APPLY TO YOU. IN THESE JURISDICTIONS YOU HAVE ONLY THE IMPLIED WARRANTIES THAT ARE EXPRESSLY REQUIRED TO BE PROVIDED IN ACCORDANCE WITH APPLICABLE LAW. THE LIMITATIONS OF WARRANTIES, LIABILITY, AND REMEDIES APPLY TO THE MAXIMUM EXTENT PERMITTED BY LAW.

ALTHOUGH THIS LIMITED WARRANTY GIVES YOU SPECIFIC LEGAL RIGHTS, YOU MAY HAVE OTHER RIGHTS IN YOUR JURISDICTION. THIS STATEMENT OF LIMITED WARRANTY IS SUBJECT TO APPLICABLE LAWS THAT APPLY TO YOU AND THE PRODUCT. PLEASE REVIEW THE LAWS IN YOUR JURISDICTION TO UNDERSTAND YOUR RIGHTS FULLY.

**CHANGES TO THIS POLICY**

We may change the terms and availability of this limited warranty at our discretion, but

any changes will not be retroactive.

This warranty is made by:

**AROVAST CORPORATION**

1775 Flight Way, Suite 150, Tustin, CA 92782  
USA

# CUSTOMER SUPPORT

---

If you have any questions or concerns about your new product, please contact our helpful Customer Support Team.

**Arovast Corporation**

1775 Flight Way, Suite 150,  
Tustin, CA 92782  
USA

**Email:** [support@cosori.com](mailto:support@cosori.com)

**Toll-Free:** 1-888-402-1684

**Support Hours**

Mon–Fri, 9:00 am–5:00 pm PST/PDT

*\*Please have your invoice and order ID ready before contacting Customer Support.*

# COSORI®

**Questions or Concerns?**

Mon-Fri, 9:00 am-5:00 pm PST/PDT  
support@cosori.com | 1-888-402-1684

A3\_24K01\_us retail