

Wine CELL'R PLATINUM

Instruction manual



Models:

WC34PLSZ5 (1 zone)

WC38SSTBC5 (2 zones wine/beverages)

WC1958PLBC (2 zones wine/beverages)

WC46PLSZ5 (1 zone)

WC46PLDZ5 (2 zones)

PLEASE READ THIS MANUAL CAREFULLY BEFORE INSTALLATION AND USE.

VERSION FRANÇAISE P.21

Table des matières

<u>INFORMATION/SAFETY INSTRUCTIONS</u>	4 to 5
Before using your device.....	4
Important safety instructions.....	4
Pre-installation tips.....	5
<u>INSTALLATION</u>	6 to 10
Measurements and dimensions.....	6
Installing the handle.....	8
Reversing the door.....	8
Bottle layout and storage.....	10
<u>OPERATION</u>	11 to 15
Wine cabinet operation.....	11
• Display panel (A).....	12
• Before you start (B).....	12
• Temperature setting (C).....	13
• Locking and unlocking the panel (D).....	13
• Light adjustment.....	13
• Changing the display to Celsius or Fahrenheit.....	13
• Ideal temperature for serving your wine.....	14
• Lock.....	14
• How to remove a telescopic shelf.....	15
<u>MAINTENANCE</u>	15 to 16
Cleaning the wine cabinet.....	15
Filter change.....	16
Power outage.....	16
Energy Saving Tips.....	16
<u>TROUBLESHOOTING</u>	17 to 18
<u>YOUR WINE CELL'R WARRANTY</u>	19 to 21
Limited Warranty.....	19
Terms & Exclusions.....	19
Contact us.....	21
Registration card.....	21
Model and serial number of the unit.....	21


INFORMATION/SAFETY INSTRUCTIONS

Before using your device

- Remove inner and outer packing material.
- Allow the appliance to stand upright for approximately 24 hours before plugging it in to avoid complications in the cooling system.
- Use a soft cloth with warm water to clean the inside and outside.

Important safety instructions

Before using the appliance, please position and install it properly according to the specifications in the manual. To avoid the risk of fire, electric shock or injury when using the unit, please read and follow the precautions suggested in this manual.

- Never clean any part of the unit with flammable liquids that may cause a fire or explosion hazard.
- Do not store gas or other flammable products near the appliance.
- Do not plug or unplug the appliance when your hands are wet.
- Unplug the appliance or disconnect the power supply before making a service call, servicing or cleaning the appliance. Failure to do so may result in electric shock or death.
- Do not attempt to replace or repair any parts on the appliance unless specified in the manual or refer servicing to a qualified technician.
- The front of the appliance must not be obstructed in any way to ensure adequate ventilation.
- This appliance is designed and intended for use by persons who are familiar with the operation of electrical appliances. All other persons (including children) must be supervised or instructed in advance by a person responsible for their safety.
- Children must be supervised not to play with the appliance.
- Do not use solvent-based or abrasive cleaners inside the appliance, as these may discolour the interior.
- Do not use this unit for any purpose other than recommended.
- The use of an extension cord is not recommended by the manufacturer and may be dangerous.
- When disposing of the appliance, be sure to remove the door and leave the shelves in place to prevent children from climbing inside. Make sure that the cooling and heating circuit at the bottom rear of the unit is not damaged. The symbol  on the product or on its packaging indicates that this appliance is not a product to be disposed of in the household waste, but rather should be taken to an appropriate recycling facility for electrical appliances.

Pre-installation tips

This appliance is designed for flush-mounted or freestanding installation

- The appliance is intended to be used exclusively for the storage of wine.
- Place your wine cabinet on a flat floor strong enough to support it when fully loaded.
- **It is important that the appliance is level** to operate properly (check with a level from left to right and front to back). You can adjust the feet of the appliance to level it.
- Make sure that there are enough people to move and install the appliance to prevent damage to the appliance or people. When moving the appliance, **do not tilt it more than 45 degrees**.
- The appliance must be installed away from heat sources such as heating system, radiator, oven. Direct sunlight can affect the acrylic coating and heat sources can increase the energy use of the wine cabinet. Cold and extreme ambient temperatures can also cause malfunctions of the appliance.
- Avoid placing the appliance in damp locations.
- Once in its location, **wait 24 hours before plugging in the appliance**.
- Make sure that the voltage/current indicated on the label matches your supply voltage. Plug the appliance into a 3-pin socket, do not remove the grounding rod. **Do not use an adapter and do not use an extension cord**.
- It is recommended to plug the wine cabinet into a power bar with surge protector.
- It is recommended to provide a separate circuit for your appliance.
- The fuse (or circuit breaker) size should be 15 A or greater.
- Any questions regarding the power supply and/or grounding should be directed to an electrician or an authorized service center.

INSTALLATION

Measurements and dimensions

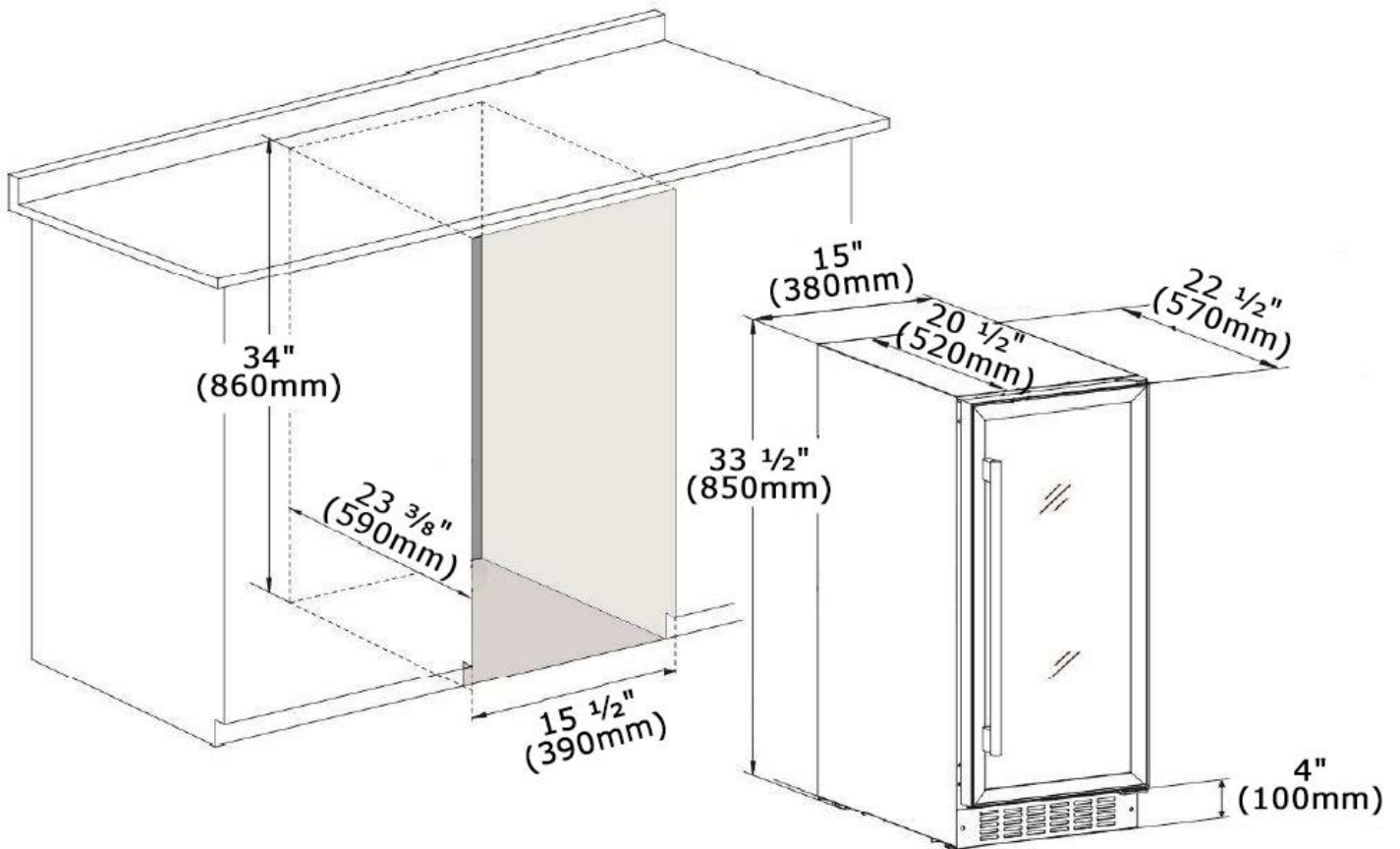
The cut-out dimensions shown below allow door clearance and access to the sliding shelves when the wine cabinet is installed as a flush-mounted appliance.

Your wine cabinet has been manufactured with a zero-clearance door, so no additional space is required to accommodate door swing when building your cabinets.

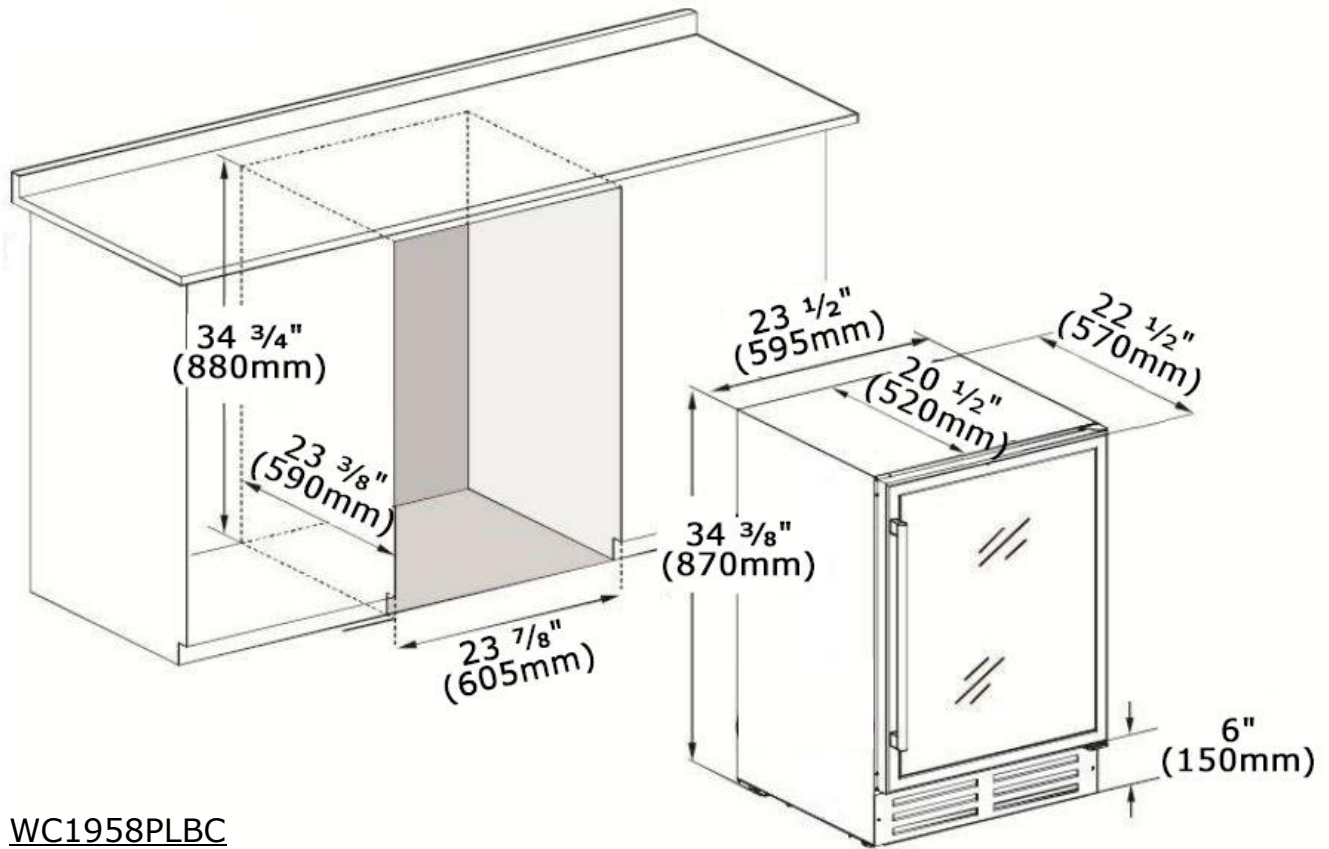
These cut-out dimensions indicate the minimum space required for your wine cabinet to function as intended.

Note that the plug on the socket requires 38 mm of clearance at the rear when plugged in and the handle is a maximum of 45 mm deep, depending on the model.

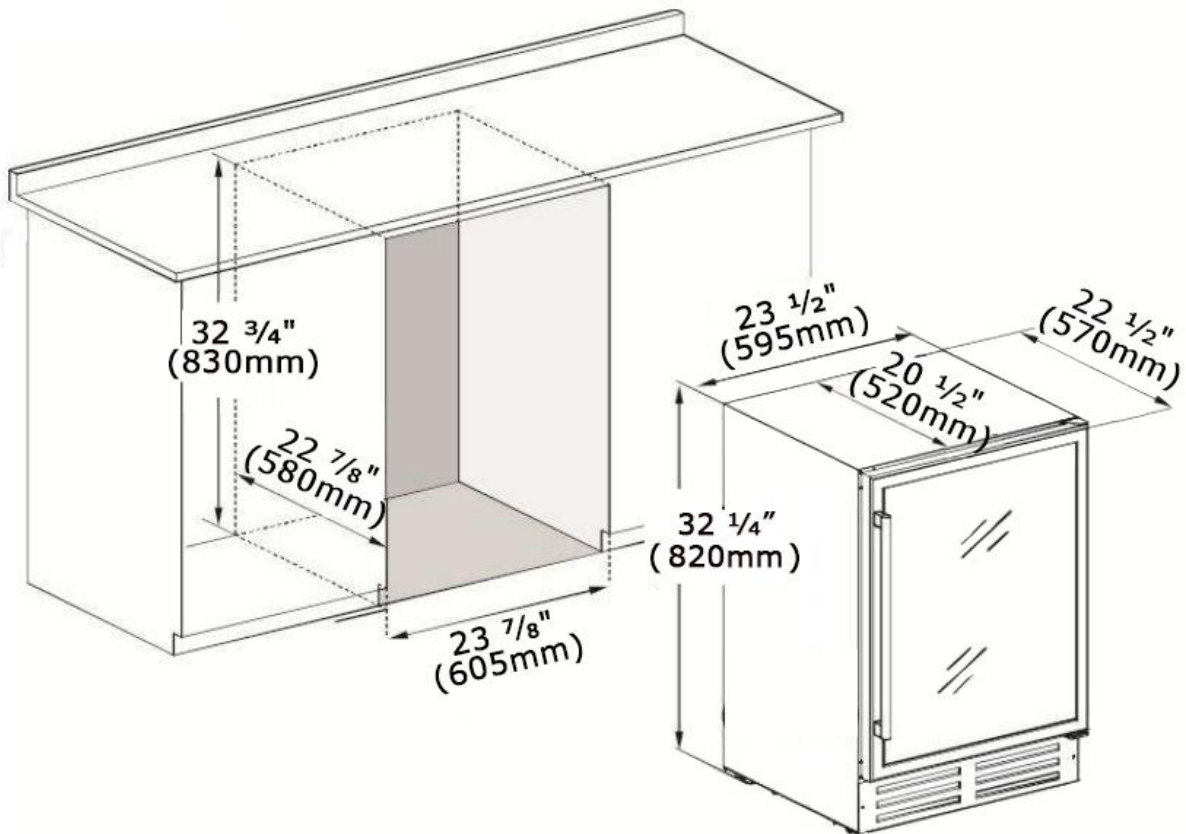
WC34PLSZ5



WC38SSTBC5 / WC46PLSZ5 / WC46PLDZ5

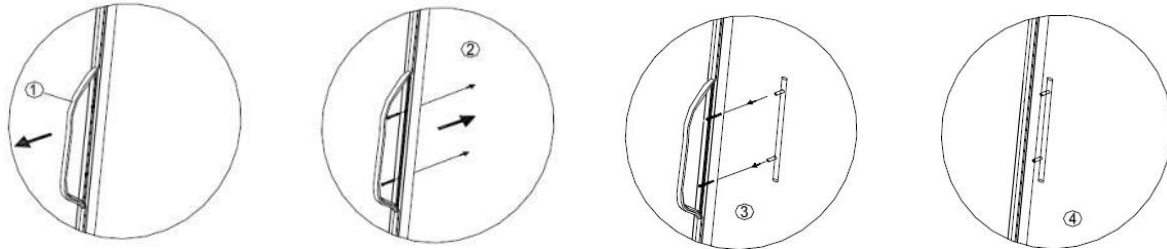


WC1958PLBC



Installing the handle

- 1.** Move the door seal behind the handle with your finger. In some models, plastic caps cover the screws; remove them to expose the screws.
- 2.** Insert the screws into the pre-drilled holes in the handle.
- 3.** Install the handle and tighten the screws.
- 4.** Replace the seal and the door caps.

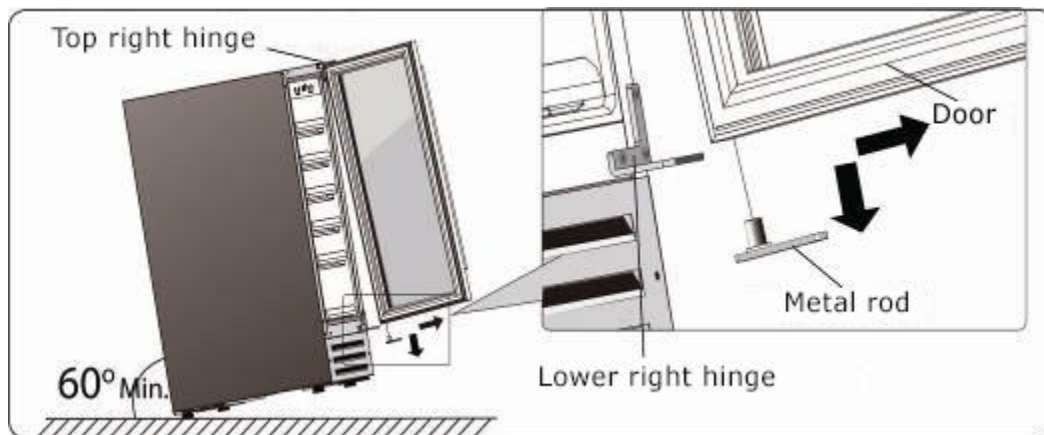


Reversing the door (WC34PLSZ5/WC46PLSZ5/WC46PLDZ5)

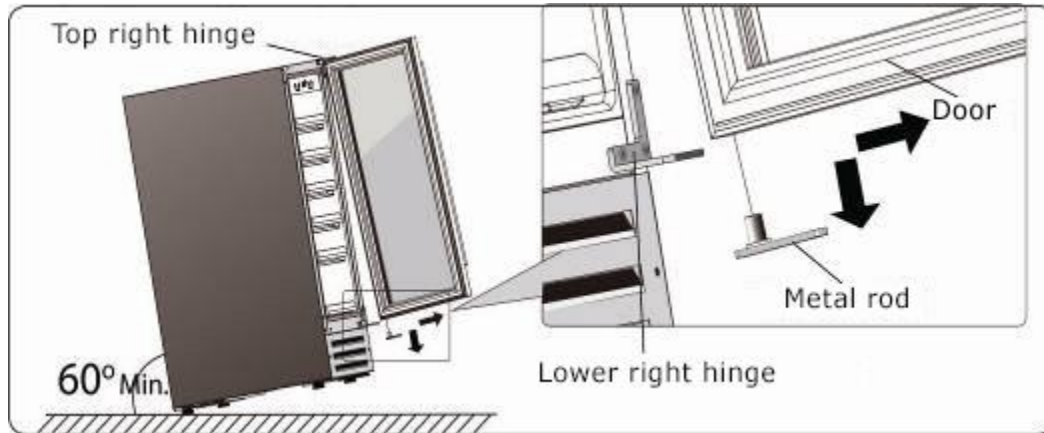
Before you start

Make sure the wine cabinet is level. Seal the shelves with tape to prevent movement during the process. The door of this appliance can be installed to open on the left or right side. To reverse the movement of your wine cabinet door and open it on the opposite side, please follow the instructions and diagram below.

- 1.** Open the door and unscrew the screws of the lower hinge.

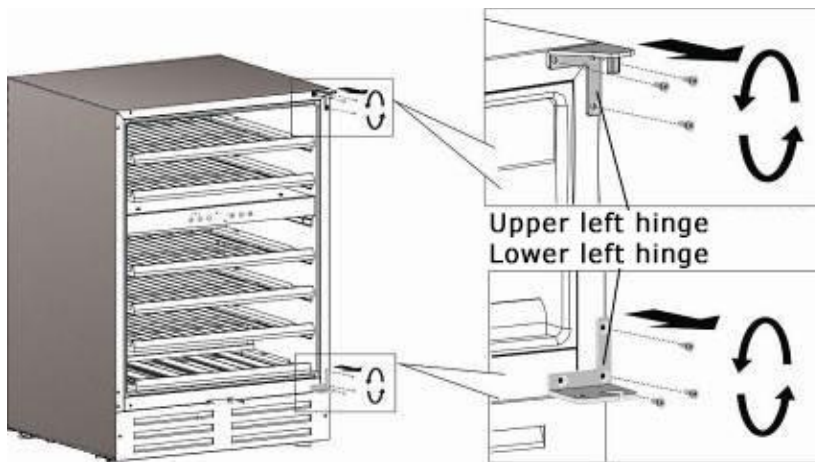


2. Remove the door from the top hinge, remove the metal pin and remove it.



3. Use a small flat head screwdriver to lift and remove the plastic cap on the upper center (locking hole) of the door and insert it into the lower center hole, rotate the door 180 degrees (counterclockwise) so that the top becomes the bottom.

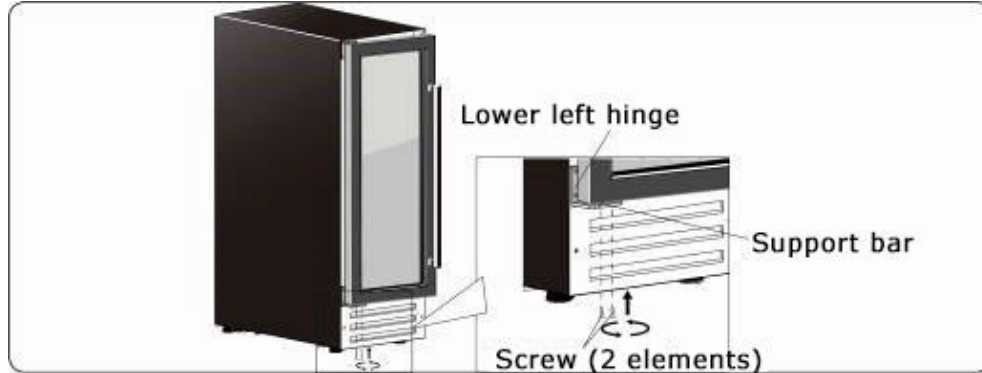
4. Unscrew the upper and lower hinge.



5. Dislodge the plastic caps on the left side of the cabinet and change them to the right side.

6. Install on the opposite side the left hinges included as accessories with the instruction manual.

7. Screw the metal pin under the door, then install the door by retracting it into the upper hinge and then into the lower hinge. Replace the screws of the support bar at the bottom to secure the door.



Bottle layout and storage

Your wine cabinet has been designed to safely store a maximum number of bottles. We recommend that you follow the tips below to optimize loading.

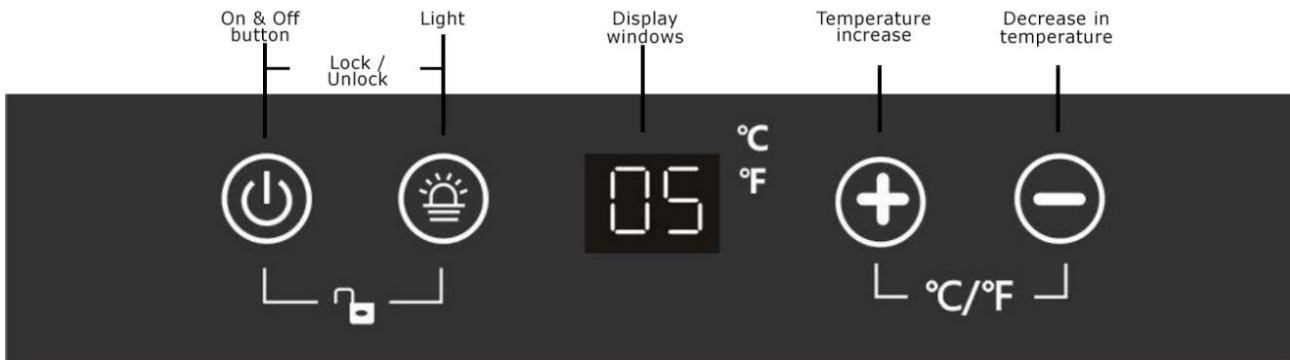
- Remove the tape from the shelves once the appliance is stable and ready for storage.
- Place the bottles evenly to avoid concentrating the weight in one place. Bottles should not touch the back of the wine cabinet. Your wine cabinet has been designed to store large bottles such as Pinot Noir and Champagne. These larger bottles reduce the number of bottles you can place on a shelf. Make sure that not all bottles are grouped together at the top or bottom of the wine cabinet for optimal cooling.
- Pull out only one telescopic shelf at a time. Never try to pull more than one telescopic shelf at a time.

OPERATIONS

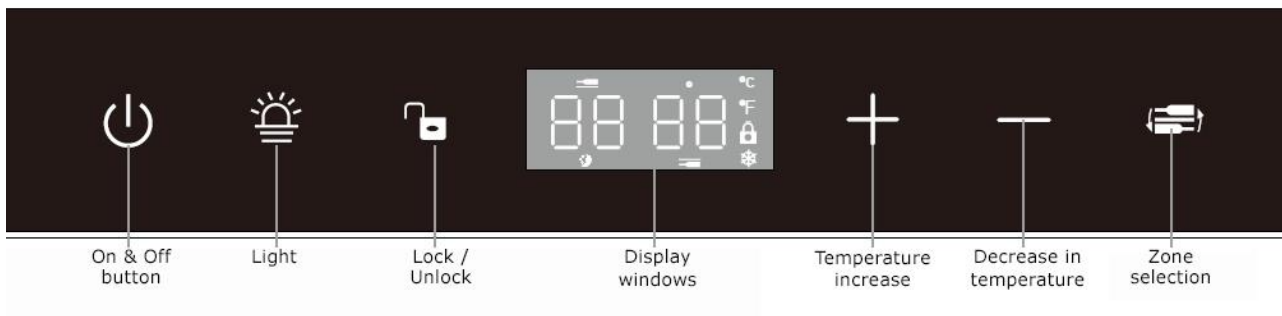
Wine cabinet operation

Your wine cabinet has a control panel with display on the front of the door. It includes several functions that allow you to control the temperatures of both the upper and lower zones of your wine cabinet.

1 zone model (Including WC1958PLBC & WC38SSTBC5)



2 zones model



ON & OFF button

Switches the wine cabinet on or off.

Press and hold for 3 seconds.

Press lightly to activate standby mode.

Light

Switches the interior lighting on and off (3 options)

Control Panel (padlock)

Press the PADLOCK icon for 3 seconds to lock or unlock the control panel. In the case of the 1 zone model, press the 2 left buttons simultaneously.

Display window

Displays set and actual temperature as well as operation icons.

Temperature increase (+)

Increases the set temperature.

Decrease in temperature (-)

Reduces the set temperature.

Temperature in Celsius or Fahrenheit

By simultaneously pressing the + and - controls with the locked panel **changes the temperature display to Fahrenheit or Celsius.**

Zone selection (Dual zone only)

Press to select the upper zone (left digits) or the lower zone (right digits) when setting temperatures.

(a) Display panel

The control panel has a "sleep mode" function to hide the control buttons and display digits. If you gently/shortly press the "on/off" button, all the control buttons will turn off; then, if you gently touch one of the buttons, the whole panel will turn on again.



You also have the option of turning off the temperature digit display when the control panel goes into sleep mode while locked. Simply press and hold the LIGHT button for 3 seconds; the temperature digits will darken. If you hold down the LIGHT icon for 3 seconds, this function will be reversed.

(b) Before you start

The wine cabinet must be installed in a location where the ambient temperature is between 60-80 °F or 15-27 °C. If the ambient temperature is outside this recommendation, the performance of the wine cabinet may be affected. Installing your appliance in extremely cold or hot conditions may cause temperature fluctuations inside your wine cabinet.

(c) Temperature setting

NOTE: The temperature reading indicates the actual temperature of the wine cabinet, it temporarily displays the temperature set during the adjustments, then returns to the temperature read inside after 5 seconds.

- 1.** Make sure the power cord is properly connected to a grounded outlet.
- 2.** Turn on the appliance.
- 3.** Dual zone models: Use the zone select button to select the upper or lower zone. The distance between the 2 zones should be between (7 °F or 4 °C) and (14 °F or 8 °C) colder than the lower zone to optimize the performance of the wine cabinet.
- 4.** Set the desired temperature by pressing the Temp (+) or (-) button.
- 5.** Temperatures will increase or decrease by 1 °F or °C each time the Temp (+) or (-) button is pressed.

NOTE: Temperatures may fluctuate with interior lighting ON or OFF and depending on bottles' position.

(d) Locking and unlocking the panel

To lock the control panel

- 1.** Press and hold the button (padlock) for 3 seconds.
- 2.** The control panel will emit a beep and a padlock will appear at the right of the digits.

To unlock the control panel

- 1.** Touch the panel to exit from standby mode.
- 2.** Press and hold the button (padlock) for 3 seconds.
- 3.** The control panel will beep and the padlock at the right of the numbers will disappear.

Light Adjustment

To embellish your wine cabinet, 3 mood lighting has been integrated in the wine cabinet. Simply press the (LIGHT) button once (1X) for 100%, twice (2X) for 50% and three times (3X) to turn off the light. For maximum energy efficiency, leave the light off when you are not using your wine cabinet.

Changing the display to Celsius or Fahrenheit

Depending on the model, either with the control panel crossed out or not, simultaneously press the + and - buttons for 3 seconds and the °C or °F mode will change.

Ideal temperature for serving your wine

Although the optimal storage temperature is generally considered to be between 53-57°F or 12-14°C, different varieties of wine have different recommended tasting temperatures for optimal taste. The recommended temperature ranges for serving different grape varieties are listed below.

Red wines	59-65 °F
	15-18 °C
White wines	45-52 °F
	7-11 °C
Champagnes	40-45 °F
	4-7 °C

Note:

- If the appliance is unplugged, loses power or is turned off, you must wait 5 minutes before restarting it. The compressor will not restart before this delay and the wine cabinet will not be able to cool down before this 5 minute wait.
- When you use the wine cabinet for the first time or if you restart it after a long period of shutdown, there will be a variation of a few degrees between the temperature you select and the temperature indicated on the control panel for the first hours of operation. After a few hours of operation, the temperature will normalize to the selected temperature.

Lock

- This appliance comes with a key lock (except model WC1958PLBC & WC38SSTBC5).
- The keys are located inside the plastic bag containing the user manual. To unlock the door, insert the key into the lock and turn counterclockwise.
- To lock the door, simply reverse the operation, making sure the metal pin is fully engaged. Then, remove the key and place it in a safe place for safekeeping.

Models with 94 bottles or more

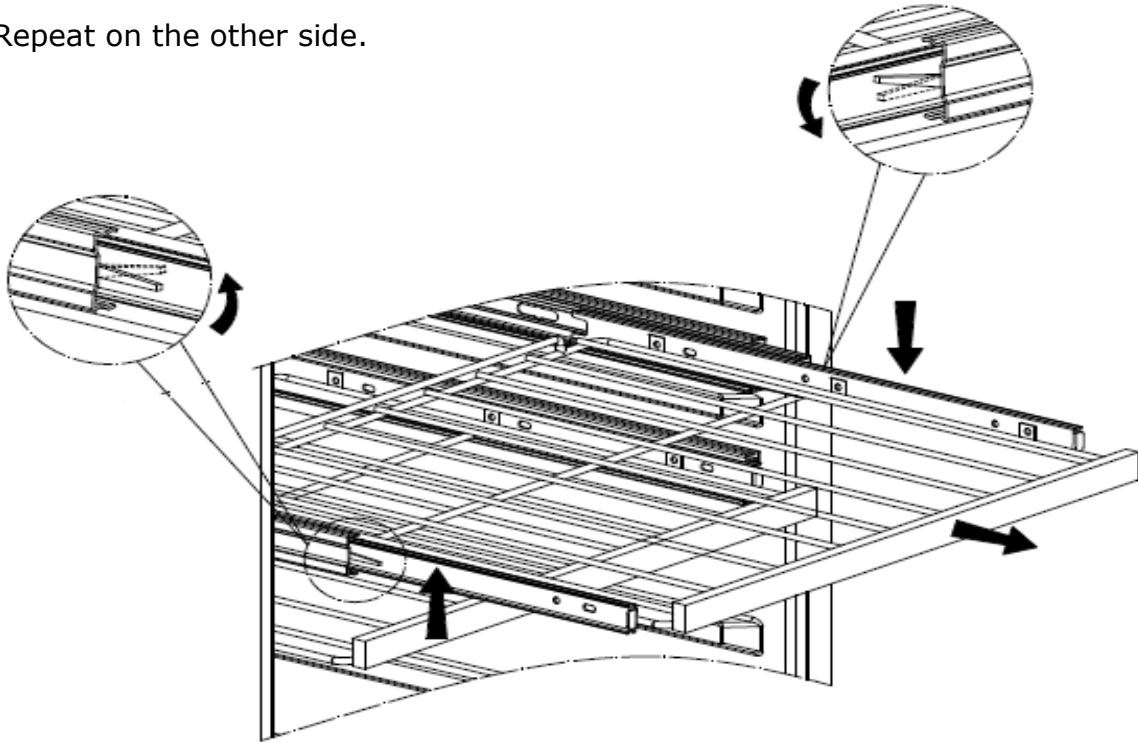


Models with less than 94 bottles



How to remove a telescopic shelf

1. Remove all bottles.
2. Pull the shelf out as far as it will go
3. Hold one of the telescopic shelves with one hand and with the other hand, gently lift the front of the shelf by the front tab, then push backwards to unlock the rear hook.
4. Repeat on the other side.



MAINTENANCE

Cleaning the wine cabinet

- Close the wine cabinet and unplug it. Remove the bottles and shelves inside.
- Clean interior surfaces with a sponge and baking soda.
 - The solution is 2 tablespoons mixed with 1 litre of warm water.
- Wash the shelves with mild soap.
- Remove excess water from the sponge or cloth before cleaning the control panel or electrical parts.
- Clean the outside of the cabinet with warm water, a cloth, and mild soap. For stainless steel grills and doors, use a cleaner specially designed for this type of surface.

- Vacuum the front grille and the back of the appliance twice a year.
 - Make sure the power is turned off before cleaning.
- It is recommended to clean the appliance thoroughly inside and out once a year to maximize the longevity of the wine cabinet and the finish of the various materials.

Filter change

The active carbon filter should be replaced once a year. It preserves the efficiency of your wine cabinet. To remove it, grasp the rim with your fingers and turn it to the left or right, pulling slightly until the holes in the panel and the plastic pins on the filter are aligned. To replace it, align and retract the plastic pins, then rotate to lock it in place.



Power outage

- Most power outages are resolved within a few hours. This should in no way affect the temperature of your wine cabinet, if you minimize the opening of the door. If the power outage persists for a long period of time, you must take the necessary measures to protect your bottles.
- If the appliance is unplugged, loses power or is turned off, you must wait 5 minutes before restarting it. The compressor will not restart before this delay and the wine cabinet will not be able to cool down before this 5 minute wait.

Energy Saving Tips

- The wine cabinet should be located in the coldest part of the room, away from heat-producing appliances and out of direct sunlight.
- Regularly check that the door is properly closed and that the door seal sticks to the wine cabinet.
- Fill the wine cabinet as much as possible (min. 50%); the more the contents, the more stable the temperature will be and the compressor will run less often.

TROUBLESHOOTING

Many common problems can be solved very easily. Follow the troubleshooting tips below if you encounter any problem:

No.	PROBLEM	CAUSES & SOLUTIONS
1	My cellar is not working.	<p>Check if it is plugged in.</p> <p>The cellar is not turned ON.</p> <p>The circuit is closed or a fuse is blown.</p> <p>It should be the only device plugged into the outlet. It is recommended to provide a 15 amp circuit dedicated exclusively to the cellar.</p>
2	My cellar is not cooling enough.	<p>Check the temperature parameters on the control.</p> <p>The outdoor environment requires cooler temperature settings on the control.</p> <p>The door is often open.</p> <p>The door is not completely closed.</p> <p>The door seal does not close well.</p>
3	The temperature of my cellar often varies from 3-4 degrees. Is this normal?	<p>This is normal: slight differences in temperature are necessary for the proper functioning of the cellar. When the cellar begins a defrost cycle, the temperature rises a little. When the refrigeration system turns on again, the temperature cools down.</p> <p>These changes are taking place over short periods and their influences are too small to affect the conservation of the wine. The liquid tends to maintain an average temperature.</p>
4	My cellar does not maintain its temperature and the compressor often starts.	<p>Is your cellar filled to at least 50% of its capacity? Has your cellar been running for more than 48 hours?</p> <p>Your cellar is installed near a heat source (heater, door, window, stove, etc.).</p> <p>The door is not completely closed.</p> <p>The door seal does not close well.</p>
5	My cellar automatically closes ON / OFF frequently.	<p>The room temperature is warmer than normal.</p> <p>A lot of content has been added to the cellar.</p> <p>The door is opened too often.</p> <p>The temperature is not well adjusted.</p>
6	The light does not work.	<p>Is your cellar plugged in?</p> <p>The circuit is closed or a fuse is blown.</p> <p>The light is closed, use the control panel to turn it on (see Operations section).</p>
7	Too much vibration.	<p>Check if the unit is level.</p> <p>Make sure that no part inside your cellar (shelf / rail) or in the back, near the compressor, is not loose (pipes that rub on metal, broken fastener, etc.).</p>

No.	PROBLEM	CAUSES & SOLUTIONS
8	My cellar seems to be making too much noise.	<p>Noise can come from the coolant, which is normal.</p> <p>At the end of each cycle, you can hear a gurgling sound caused by the coolant.</p> <p>The expansion and contraction of the interior walls can cause creaking noises.</p> <p>The unit is not level.</p> <p>The installation measures were not respected, leaving too much space between the cellar and the cabinets and amplifying the noise of the compressor and the fan at the back.</p> <p>The ceiling height and the size of the room (open area) may also increase the sound (echo effect).</p>
9	The door does not close properly.	<p>The unit is not level.</p> <p>The door was reversed and installed incorrectly.</p> <p>The door is open but the lock is locked.</p> <p>The gasket is dirty.</p> <p>Shelves are improperly installed on the rails or bottles that are too large or improperly placed prevent a shelf from closing.</p>
10	The door of my cellar is not equal to the box.	<p>Adjust the leveling feet at the front until the door is equal to the cellar.</p> <p>The hinge screws are not tight enough; replace the door equal to the box and tighten the screws.</p>
11	A shelf in my cellar is not level.	Make sure that the shelf is properly secured on its rails.
12	There is water on the floor of my cellar.	<p>Check that the drain is in the evaporation tray at the back of the cellar. If so, during very humid periods, you may need to soak up the excess water in the pan.</p> <p>Make sure the cellar is leveled from front to back and left to right.</p>
13	Water collects inside my cellar.	This is a phenomenon observed especially in summer due to humidity. Check that the door seal is watertight. During very humid weather, it is recommended to sponge off the excess water that forms inside your cellar and if necessary in the back pan near the compressor.
14	There is frost on back wall of my cellar.	This is a very normal phenomenon when water vapours freeze. However, when the cooling cycle ends, the ice melts and runs down the drain. These drops normally evaporate.
15	There is steam / humidity between the thermal windows of my cellar.	During very wet periods, mainly in summer, this can happen.
16	The digital display shows HH or LL and a continuous beep is heard.	The temperature sensor is non-functional and must be replaced.

YOUR WINE CELL'R WARRANTY

The appliance must have been used under the normal conditions recommended by the manufacturer. **Proof of the date of original purchase** is required to obtain warranty service, as well as the **serial number of the appliance** (white sticker inside, bottom right; e.g.: 2020010123, see page. 20). All warranty repairs are carried out by our authorized repair center, taking into account the conditions and exclusions described below. Warranty applicable in Canada only.

2-year limited warranty on parts and labour

Wine Cell'R will provide, at its discretion, all parts that prove to be defective due to a defect in material or workmanship and will also provide, free of charge, labour and repair services to replace said defective parts, and this, 2 years from the date of purchase.

3-year limited compressor warranty

During the first 2 years of the warranty (from the date of purchase), WineCell'R will replace the defective compressor free of charge for parts and labour, as long as the appliance has been installed and used according to the instructions supplied with the appliance.

During the third year of the warranty, WineCell'R will only replace the compressor. The costs of labor, transportation or other costs will be at the expense of the purchaser. In the event that the appliance must be returned to the shop, the cost of the transfer and return home will be at the expense of the purchaser.

An extended warranty may be available for an additional cost at the time of purchase. Please check with your dealer for details.

During the limited warranty period, Wine Cell'R will repair or replace, at its discretion, any appliance that does not operate according to the manufacturer's specifications. Wine Cell'R reserves the right to substitute substantially similar materials in the event that materials are not available at the time warranty service is performed.

Terms & Exclusions

Plastic parts are guaranteed for thirty (30) days only from the date of purchase, with no extensions.

What Wine Cell'R does not cover

- Visit of a technician at home to explain how the wine cabinet works.
- Improper installation (e.g., flush-mounting of a freestanding appliance or outdoor use of an appliance not designed for this purpose).
- Any loss of contents.
- Replacing the fuse or resetting the circuit breakers on your home's distribution panel.
- Any damage to the appliance due to accident, fire, flood, robbery, lightning, a case of force majeure or lack of maintenance.
- Diagnostics of the type no problem found.

- A perforated evaporator voids the warranty on the entire sealing system.
- Repairs made by technicians not authorized by Wine Cell'R.
- Any damage incurred during transport or movement of the appliance.
- Expenses related to the removal or reinstallation of the product that is not accessible to the technician.
- Visit from a technician to change the side of the door, level or install the appliance.
- Any direct or indirect damage to your personal property caused by a possible defect in the appliance.
- Incorrect power supply (low voltage, faulty wiring, incorrect fuses, use of an extension cord).
- Inadequate air circulation in the room or abnormal operating conditions (extremely high or low temperatures).

The purchaser must understand and accept that the product purchased is a wine cabinet designed to store wine. The purchaser assumes all responsibility for his wine while using this appliance, including the risk of deterioration, humidity and temperature variations, leaks, mould and dryness.

Contact us

Thank you for purchasing a Wine Cell'R quality appliance. We advise you to activate your warranty now. Simply fill out the attached registration form and return it to us by mail or by email at service@eurocelcanada.com or by fax at 450 688-2324.



WARRANTY REGISTRATION CARD
CARTE D'ENREGISTREMENT DE GARANTIE

WINE CELL'R

First Name / Prénom: Last Name / Nom:

Address / Adresse: City / Ville: Prov.: Postal Code / Code Postal:

Tel / Tél.: Email / Courriel:

Purchase Date / Date d'achat: Purchased From / Acheté par:

Sérial Number / Numéro de série:

Model Number / Numéro de modèle:

Send to / Expédier à :
DISTRIBUTION **EuroCel** CANADA INC. Exclusive Distributor / Distributeur Exclusif Wine Cell'R Canada

3208 Desserte Sud A440 Ouest.
Laval (Québec) H7T 2H6
Tel / Tél. : 450-688-2320
Toll Free / Sans frais: 1877-847-9467
Email / Courriel: service@eurocelcanada.com

www.winecellr.ca

Warranty must be active within 30 days of purchase. La garantie doit être enregistrée dans les 30 jours suivant l'achat.

Date:

Signature:

Note:

Model and serial numbers are printed on the white label located on the bottom right inside the wine cabinet

