



REEL YAKS

Assembly Instructions

Raptor

9.5ft Modular Fin Drive Pedal Fishing Kayak
380lbs Capacity | 2 Piece



Our Commitment

Congratulations on buying your Reel Yaks pedal kayak! We want you to love your kayak as much as we do. If you have any questions on your Reel Yaks kayak assembly, then please email us at info@reelyaks.com or call us on 855 202 5035. Note we also have assembly videos on our website at WWW.REELYAKS.COM and on YouTube. If you run into any other issues, no matter how small, let us know and we'll take care of you.

Don't forget to fill out the **warranty form** on our website at www.reelyaks.com/pages/warranty-registration

If you are looking for any accessories to go with your Reel Yaks kayak such as a trolling mount, bimini, etc. then please visit us at WWW.REELYAKS.COM

Unboxing your Kayak

- 1** The kayak halves will come wrapped in a storage cover and some parts may be in cardboard boxes or plastic bags or bubble wrap (e.g. pedal drive). Please ensure to dispose of these packing materials safely, in particular the plastic.



- 2** Each package will have:
- 1 x kayak (in two sections)
 - 1 x rudder
 - 1 x rudder security (cotter) pin
 - 1 x paddle (in two sections)
 - 1 x fin pedal drive unit
 - 1 x set of pedals (2)
 - 1 x set of spare fins (2)
 - 1 x stadium chair
 - 1 x fishing rod holder
 - 2 x side carry handles, on the front section (attached to the accessory rails)
 - 4 x accessory rail sliders

The larger items will be secured in the main cockpit area: pedal drive unit, pedal drive pedals, spare fins, paddle and stadium chair. Others like the fishing rod holder will be inside the cockpit hatch.

7 Assembly Steps

There are seven key pieces of assembly to be done:

1. Kayak halves
2. Rudder
3. Fishing Rod Holder
4. Front Carry Handles
5. Stadium Chair
6. Paddle
7. Pedal Drive



1. Kayak Assembly

1 For the kayak assembly ensure you have the two halves facing each other. Lift the rear section so that the lip of the rear overlaps the front half lip and then push down firmly on both sides.



2 When this is done your kayak should be evenly aligned on both sides.



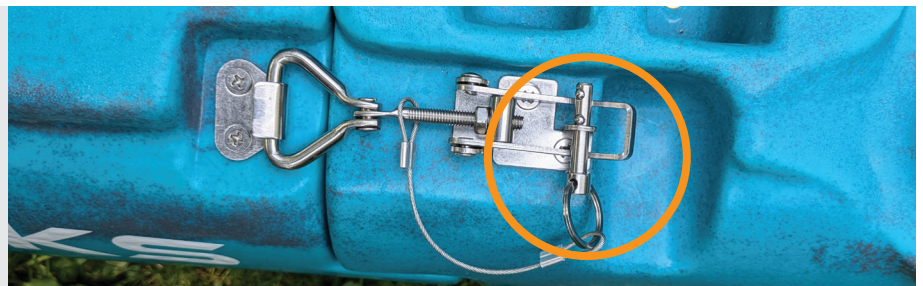
3 Next close the latches on both sides. The latches should be set correctly for your kayak, but if you find you're having to force it then stop. Adjust the nut (orange arrow) to get a firm lock closure, but not without forcing it.



4 If it's too loose then adjust the nut accordingly to get a good firm fit. Forcing the latch closed for an overly tight fit can damage the screws unnecessarily (yellow arrow) on the adjoining catch.



5 Lastly insert the safety pin into the latch to prevent it from opening unexpectedly. The pin has two notches on it, insert it behind the second notch.



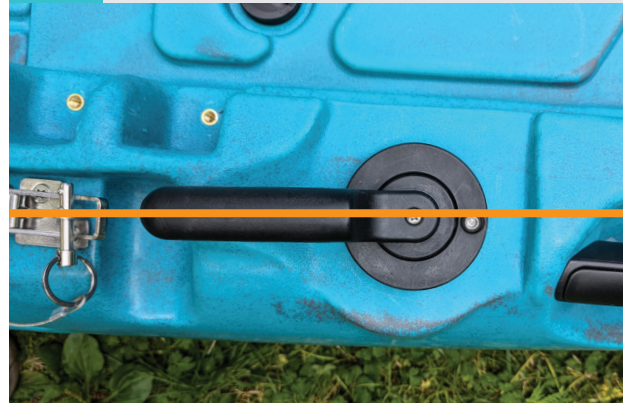
2. Rudder Assembly

Steering Part

1 The base of the rudder steering mechanism is located to the left of the seat. The rudder handle needs to be properly mounted and aligned with the base, before tightening with the single screw provided.



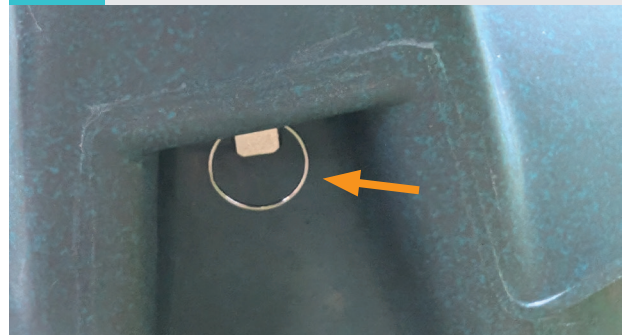
2 Ensure that your rudder steering handle is in a neutral position with the handle parallel to the centre line of the kayak.



3 Put the pin of the rudder through the rear hole in the kayak.



4 Thread the security ring through the hole at the bottom of the rudder pin.



5 Next unwind the butterfly nuts and put them through the plastic holes on either side of the rudder and tighten the butterfly nuts again.



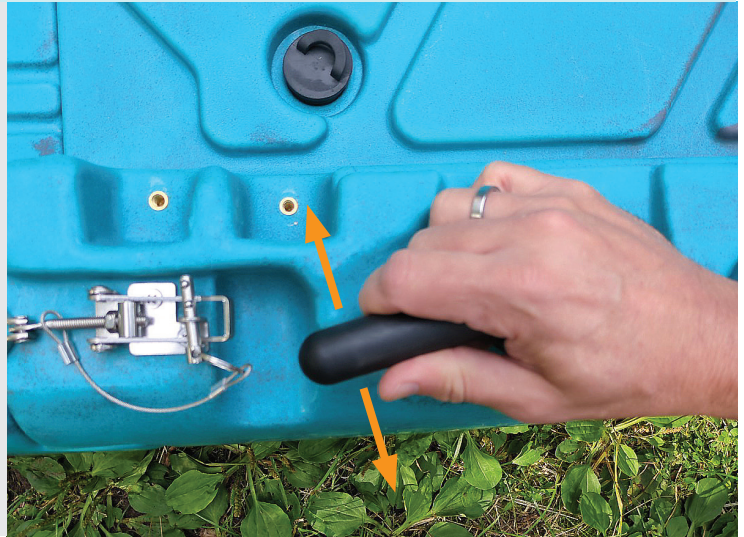
6 Check that your rudder is centered: adjust the wing nuts as needed.



2. Rudder Assembly *continued*

Lifting Part

7 Next grab hold of the rudder steering handle on the left side of the kayak near where the seat would be located. Pull the rudder handle all the way left and then all the way right, to ensure the rudder is tracking correctly, adjust the butterfly nuts as needed. Leave the rudder steering in the approximate centre spot. The steering wires should have a little bit of slack for ease of turning and to ensure minimal wear and tear where they enter the kayak.



8 The red ball and string to the right of the seat is for raising and lowering the rudder. Release the red ball and string from the cleat. Then untie the rudder rope at the back of the kayak, you'll need to thread the rudder rope through the main hole at the start of the rudder (orange arrow) and down through the gap (blue arrow). Then thread it around the right side of the rudder and through the hole at the top of the rudder (yellow arrows) and tie a knot.



9 In order to test the lowering of the rudder unlock the rudder string and pull the red ball to the right of the seat. You need to lock the string in the V of the cleat to keep the rudder in a down position.



3. Fishing Rod Holder Assembly

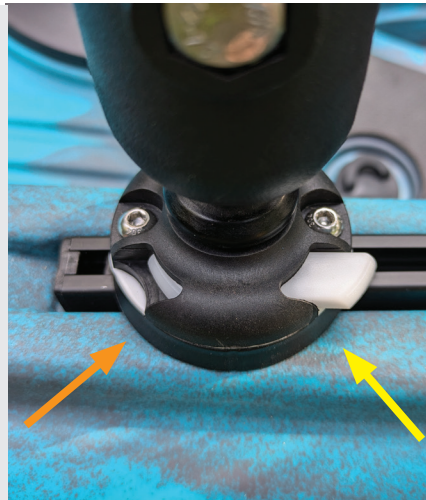
1 The rod holder base is already installed at the front of the kayak, in front of the pedals. If you wish to move the rod holder base to the side rails, you will need an Allen key to remove the 2 screws.



2 You can then choose which side rail to place the rod base holder and how far along the rail you want it mounted. Align two of the accessory rail sliders beneath the rod base holder and then mount in the 2 screws for the rod base holder into the sliders.



3 Next insert the fishing rod holder into the now secure base by 'opening' the base as indicated below (orange arrow). Next close the slider to lock the fishing rod holder in place (yellow arrow).



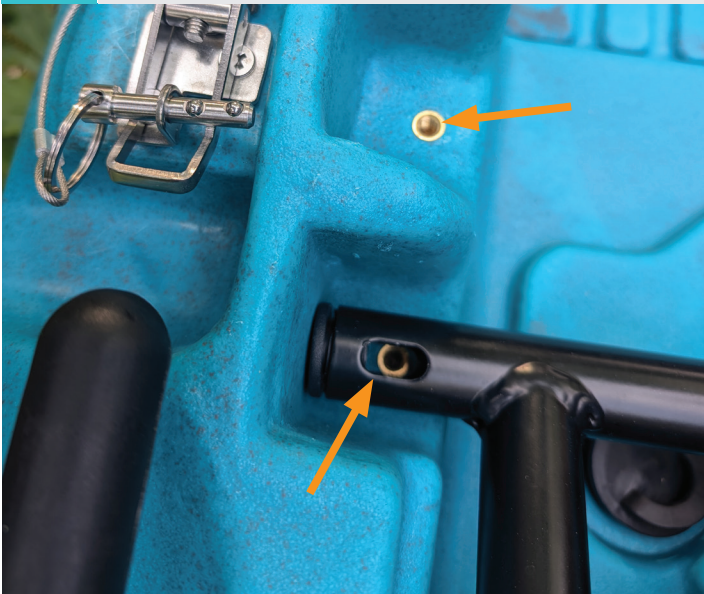
4. Front Carry Handles Adjustment

1 The kayak comes with side handles for both the front and rear section to make it easier to carry your kayak in two pieces. The rear handles are molded into the kayak body and the front side handles are located in the accessory rails. The front rails are easy to attach if they are not already. Simply insert the two screws into two of the rail sliders and tighten with an Allen key. These handles can also help you to pull yourself to a standing position to fish.



5. Stadium Chair Assembly

- 1 Your stadium chair should be pre-installed in the front of the two seating option locations (orange arrows). If you're 5.8' and under then we recommend keeping it there to start with, if you're over 5.8 in height then move it to the rear seating location. You can easily adjust the seat at the water's edge if either of these positions isn't optimal for you. Also remember that the pedals on the pedal drive are adjustable for leg length so you have two items you can move to get the best pedaling position for you. Use the two screw bolts to secure the front of the seat (yellow arrow) left and right side. There are no screw bolts for the back seat rail.



6. Paddle Assembly

- 1 The paddle assembly is super simple, just depress the button and pop it into the desired hold (3 locations to choose from) to get the preferred orientation of your blades.



- 2 Then use the paddle stretch cord to secure it. Remember not to leave it attached like that when the kayak is travelling on your car or truck.



7. Pedal Drive Assembly

- 1** For the pedal drive assembly ensure that you have the main unit with flaps (x1) attached and the pedals (x2).



- 2** Note the numbering on the top of the pedal drive unit, to know which is forward, '1' will be at the bottom (closest to the seat) for shorter people and '7' for taller people. For the time being don't worry about the numbering as this will help you set the correct leg length later on.



- 3** Insert each pedal (orange arrow) with the main bolt fully unscrewed (mint arrow), and while holding the red handle depressed. Aim for insertion around '3' on the top of the unit so each pedal is at the same locked location. The insertion will deliver a tight fit and once the spring-loaded pin beneath the red handle pops in then go ahead and secure the main bolt again. It's always worth checking all the nuts on the drive are tight before using if for the first time e.g. brass nuts, etc. *Loctite, while not required, is always a good preventative measure if you have any concerns.*



Complete steps 4 – 7 once you are in the kayak on the water.

- 4** Put the pedal drive into the locks with '1' facing you.



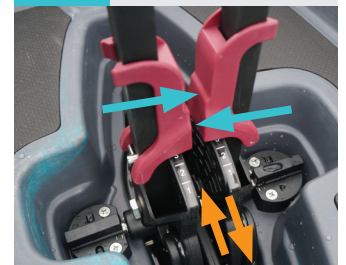
- 5** Turn the locks 90 degrees to lock in place.



- 6** Complete by closing the lock on the other side.



- 7** Push in the red handles to adjust your leg length.



Note

When beaching the kayak either remove the fins prior or push forward on one of the pedals to ensure the flaps are flared and be careful when dragging the kayak up the beach.