

# Cuisinart®

## Single-Cup Hot & Cold Brew Coffee Maker

SS-27PC



Instruction  
Booklet

For your safety and continued enjoyment of this product,  
always read the instruction book carefully before using

ITM./ART. 1994217

---

# IMPORTANT SAFEGUARDS

When using electrical appliances, basic safety precautions should always be taken to reduce the risk of fire, electric shock, and/or injury to persons, including the following:

1. **READ ALL INSTRUCTIONS.**
2. Do not touch hot surfaces. Use handles and knobs.
3. To protect against fire, electric shock, and injury to persons, do not place cord, plug, or appliance in water or other liquids.
4. Close supervision is necessary when any appliance is used by or near children or individuals with certain disabilities.
5. Always unplug from outlet when not in use and before cleaning. Allow to cool before putting on or taking off parts and before cleaning the appliance.
6. Do not operate any appliance with a damaged cord or plug, or after the appliance malfunctions or has been dropped or damaged in any manner. Return appliance to the nearest Cuisinart Repair Center for examination, repair, or electrical or mechanical adjustment.
7. The use of accessory attachments not recommended by Cuisinart may cause injuries.
8. Do not use outdoors.
9. Do not let cord hang over edge of table or counter, or touch hot surfaces.
10. Do not place on or near a hot gas or electric burner, or in a heated oven.
11. Always fill water reservoir first, then plug cord into the wall outlet. To disconnect, turn control to Off, then remove plug from wall outlet.
12. Scalding may occur if the water filter compartment cover is removed during the brewing cycle.
13. Do not use appliance for other than its intended use.
14. Do not lift handle to open the lid of the brewer while brewing is in progress.
15. Do not overfill the water reservoir with water. Use **only water** in this appliance! Do not put any other liquids or foods in the water reservoir except as instructed in the cleaning instructions in this guide.
16. Do not clean drip tray with cleansers, steel wool pads, or other abrasive materials.
17. **WARNING: To reduce the risk of fire or electric shock, do not remove the base panel. No user-serviceable parts are inside. Repair should be done only by authorized personnel.**
18. Do not operate your appliance in an appliance garage or under a wall cabinet. When storing in an appliance garage, always unplug the unit from the electrical outlet. Not doing so could create a risk of fire, especially if the appliance touches the walls of the garage or the door touches the unit as it closes.
19. This appliance is not intended for use by persons (including children) with reduced physical, sensory or mental capabilities, or lack of experience and knowledge, unless they have been given supervision or instruction concerning use of the appliance by a person responsible for their safety.
20. Children should be supervised to ensure that they do not play with the appliance.
21. Only use pods intended for this appliance. If the pod does not fit, do not force it into the pod holder.
22. **WARNING: To avoid the risk of injury, do not open the brewing chamber during the brewing process.**

## SAVE THESE INSTRUCTIONS FOR HOUSEHOLD USE ONLY

## **WARNING: RISK OF FIRE OR ELECTRIC SHOCK**



The lightning flash with arrowhead symbol within an equilateral triangle is intended to alert the user to the presence of uninsulated, dangerous voltage within the product's enclosure that may be of sufficient magnitude to constitute a risk of fire or electric shock to persons.



The exclamation point within an equilateral triangle is intended to alert the user to the presence of important operating and maintenance (servicing) instructions in the literature accompanying the appliance.

## **SPECIAL CORD SET INSTRUCTIONS**

A short power-supply cord is provided to reduce the risks resulting from becoming entangled in or tripping over a longer cord.

Longer extension cords are available and may be used if care is exercised in their use.

If a longer extension cord is used, the marked electrical rating of the extension cord must be at least as great as the electrical rating of the appliance, and the longer cord should be arranged so that it will not drape over the countertop or tabletop where it can be pulled on by children or tripped over.

## **NOTICE**

This appliance has a polarized plug (one blade is wider than the other). To reduce the risk of electric shock, this plug will fit into a polarized outlet only one way. If the plug does not fit fully into the outlet, reverse the plug. If it still does not fit, contact a qualified electrician. Do not modify the plug in any way.

	<b>WARNING</b> RISK OF FIRE OR ELECTRIC SHOCK DO NOT OPEN	
<p><b>WARNING: TO REDUCE THE RISK OF FIRE OR ELECTRIC SHOCK, DO NOT REMOVE COVER (OR BACK). NO USER-SERVICEABLE PARTS INSIDE. REPAIR SHOULD BE DONE BY AUTHORIZED SERVICE PERSONNEL ONLY.</b></p>		

## CONTENTS

Important Safeguards . . . . .	2
Important Unpacking Instructions . . . . .	4
The Quest for the Perfect Cup of Coffee . . . . .	4
Features and Benefits . . . . .	5
Getting to Know Your Control Panel . . . . .	6
Inserting the Water Filter . . . . .	7
Setting Up Your Brewer . . . . .	7
Brewing with the HomeBarista® XL . . . . .	8
Cold Brew with the HomeBarista® XL . . . . .	9
Brewing with Pods . . . . .	10
Over Ice with Pods . . . . .	11
Cleaning and Maintenance . . . . .	11
Cleaning External Parts . . . . .	11
Cleaning the Capsule Pod Holder . . . . .	11
Cleaning the HomeBarista® XL Reusable Filter Cup . . . . .	12
Cleaning the Water Reservoir . . . . .	12
Descaling Your Brewer . . . . .	12
Troubleshooting . . . . .	14
Warranty . . . . .	15

## IMPORTANT UNPACKING INSTRUCTIONS

1. Place the box on a large, sturdy, flat surface.
2. Remove the instruction booklet and any other literature.
3. Turn the box so that the back side of the brewer is down and slide the brewer from the box.
4. After removing the brewer, place the box out of the way and take the side pulp-molded inserts away.
5. Remove the polybag covering the brewer.

We suggest you save all packing materials in the event that future shipping of the machine is needed. Keep all plastic bags away from children.

## THE QUEST FOR THE PERFECT CUP OF COFFEE

### Element 1: Water

Coffee is 98% water. The quality of that water is as important as the quality of your coffee. If water doesn't taste good from the tap, it won't taste good in your coffee.

### Element 2: Coffee

The flavor of your beverage comes from the coffee, tea, cocoa—or whatever you're brewing. To achieve the best taste, always use the best ingredients. Select fresh, high-quality beans or ground coffee, and only the best single-serve pods.

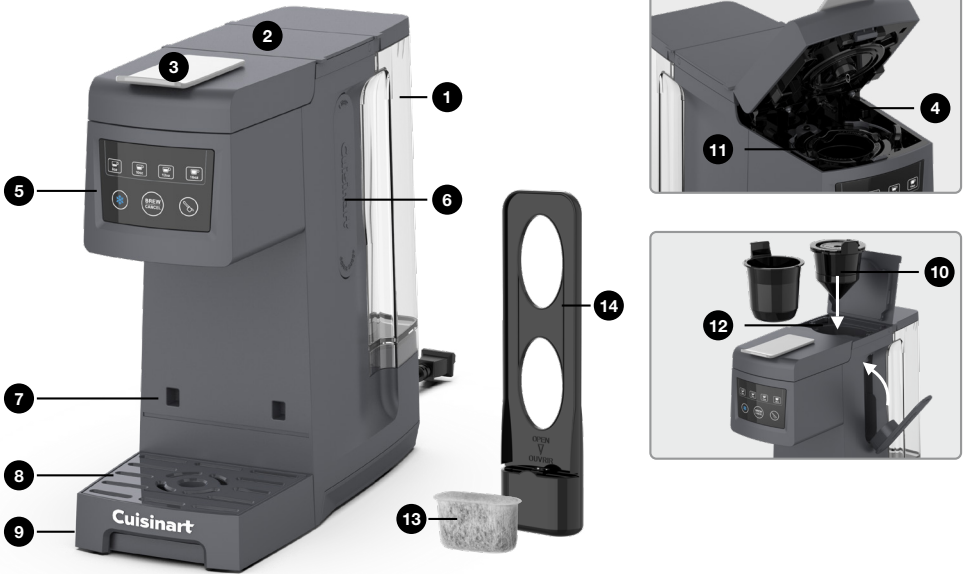
### Element 3: Grind

The grind of coffee or the refinement of tea leaves is critical for proper flavor extraction. Pre-ground ingredients in top-quality, single-serve pods ensure excellent, flavorful results. When using pre-ground coffee to brew using the HomeBarista® XL Reusable Filter Cup, the grind is just as critical. If it's too fine, over-extraction will result in bitterness and may clog the filter. If too coarse, maximum flavor is not extracted. We recommend a medium-fine grind.

### Element 4: Proportion

No matter which cup size you choose, the Cuisinart Single-Cup Hot & Cold Brew Coffee Maker, working in conjunction with a single-serve pod, will always produce the perfect cup every time. When grinding your own coffee and using it in the HomeBarista® XL Reusable Filter Cup, remember to add the amount of ground coffee that corresponds to the number of ounces being brewed.

# FEATURES AND BENEFITS



**1. Removable 48 oz. Water Reservoir**

**2. Storage Compartment**

Holds the HomeBarista® XL Reusable Filter Cup or Pod Holder.

**3. Brewing Chamber Handle**

**4. Brew Head/Brewing Chamber**

Holds the HomeBarista® XL Reusable Filter Cup or Pod Capsule Holder for brewing.

**5. Control Panel**

See detailed illustration on page 6.

**6. Coffee Scoop**

Integrated for easy storage.

**7. Drip Tray Upper Position**

Reposition drip tray to accommodate smaller cups.

**8. Removable Drip Tray Plate**

Removes for easy cleaning.

**9. Removable, Adjustable Drip Tray**

Removes for easy cleaning and positions for different size cups or travel mugs.

**10. HomeBarista® XL Reusable Filter Cup**

Holds up to 25 grams of coffee grounds.

**11. Removable Pod Capsule Holder**

**12. Storage Compartment Tray**

Removes for easy cleaning.

**13. Charcoal Water Filter**

**14. Charcoal Water Filter Holder**

**15. Cord Storage (not shown)**

**16. Sleep Mode (not shown)**

As a safety feature, your brewer will automatically go into sleep mode when it is idle for longer than 5 minutes.

Press the Brew/Cancel button to wake up screen and turn unit back on.

**17. 60-Second Reset (not shown)**

One-minute protection in case a breaker trips, the unit is unplugged, or the power fails. The unit will continue unfinished brewing once turned back on.

---

# GETTING TO KNOW YOUR CONTROL PANEL



## 1. Brew Sizes

- a. **Available sizes when using the HomeBarista® XL Reusable Filter Cup:**  
8 oz., 10 oz., 12 oz., and 16 oz.
- b. **Available sizes when using pods:**  
8 oz., 10 oz., and 12 oz.

## 2. Cold Brew/Over Ice Button

Use to prepare cold brew (using the HomeBarista® XL Reusable Filter Cup) or over-ice coffee (using a pod). See pages 8–9 for more details. For more details on Cold Brew, see page 8, or Over-Ice brewing see page 11.

## 3. Grounds Button (Scoop)

Use for brewing coffee using coffee grounds when using the HomeBarista® XL Reusable Filter Cup for both Hot and Cold Brew.

## 4. Brew/Cancel Button

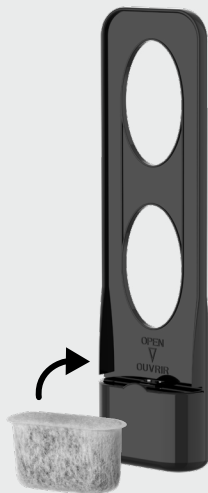
Use to begin or stop brewing.

## Inserting the Water Filter

Your coffee maker comes with a charcoal water filter that eliminates chlorine, bad tastes and odors from tap water.

- Remove the filter from the polybag and soak it, fully immersed, in cold tap water for 15 minutes.
- Lift the water filter holder out of the water reservoir.
- Press down on the filter compartment and pull toward you to open.
- Place the filter into the holder and then snap it closed. Be careful – improper placement can tear the filter skin.
- Flush the filter by running cold tap water through the holes in the bottom of the compartment for 10 seconds.
- Allow the filter to drain completely.
- Slide the water filter holder back into the channel in the water reservoir, pushing it down to the base of the unit.

**NOTE:** We recommend changing the water filter every 60 days or after 60 uses, and more often if you have hard water. Replacement filters can be purchased in stores, or by calling Cuisinart Consumer Service, or at [www.cuisinart.com](http://www.cuisinart.com).



**Coffee Maker Charcoal Water Filter and Holder**

## SETTING UP YOUR BREWER

### Initial Cleaning

Perform an initial cleaning before making your first beverage. Follow these instructions, without inserting the HomeBarista® XL Reusable Filter Cup or pod.

1. Insert the charcoal water filter in the water reservoir, if you haven't already.
2. Remove the water reservoir from the unit.
3. Fill the reservoir with water pass the MIN line, and replace it back into the unit.



4. If you haven't already, plug the power cord into an independent outlet.
5. Open and close the brew head. Do not add the HomeBarista® XL Reusable Filter Cup or a pod.



6. Place a mug on the drip tray.
7. Press the 8 oz. Brew Size button, then the Brew/Cancel button. The brew size will illuminate, the Brew/Cancel button will be breathing and hot water will dispense into the mug.
8. The one-time cleaning process is complete. Discard hot water. Your brewer is ready to use.

## BREWING WITH THE HOMEBARISTA® XL REUSABLE FILTER CUP

When using the coffee maker for the first time follow instructions in “Setting Up Your Brewer,” page 7.

1. Remove the water reservoir, fill it to the desired level with water pass the MIN line, and replace it on the unit.



2. Place a mug on the drip tray.
3. Remove the HomeBarista® XL Reusable Filter Cup from the storage compartment. Open the lid and add coffee grounds with the coffee scoop. Do not fill with grounds past the max fill line (25 grams). See chart below for recommended amount of grounds per brew size. Adjust the amount to your personal preference.

BREW SIZE	SCOOPS
8 oz.	2¼
10 oz.	2¾
12 oz.	3¼
16 oz.	4¼



**Note:** 1 level scoop equals 6 grams of coffee, max fill for HomeBarista® is 4¼ scoops (25 grams).

4. After adding coffee grounds to the HomeBarista® XL Reusable Filter Cup, do not tamp the grounds. Make sure there are no grounds remaining on the upper rim of the filter basket. Close the lid.
5. Open the brew head lid; the indicators will flash, signaling the lid is open. Remove the Pod Capsule Holder from brewing chamber by pulling it up, and place it in the storage compartment.



**Caution:** There are two sharp needles in the brewing chamber that puncture the pod, one above and one below. To avoid risk of injury, do not put your fingers in the brewing chamber.

- a. Place the HomeBarista® XL Reusable Filter Cup into the brewing chamber, it should fit securely in place. Close the brew head lid, all indicators will illuminate solid.



6. Press the Grounds button (scoop) and your desired brew size, then press the Brew/Cancel button to begin brewing. The chosen selections will illuminate and the Brew/Cancel button will breathe to indicate brewing is in process.



**Note:** To cancel brewing, simply press the Brew/Cancel button again.

**Caution:** There is very hot water in the capsule chamber during the brewing process. To avoid risk of injury, do not lift the handle or open the capsule chamber during the brewing process.

7. Once fully dispensed, the unit beeps once and the panel returns to standby mode. Raise the brewing chamber handle and remove the HomeBarista® XL Reusable Filter Cup. Use caution as it will be hot if it has been less 5 minutes since brewing.
8. Empty and clean the HomeBarista® XL Reusable Filter Cup to brew again or if a new pod needs to be used, then replace the Pod Capsule Holder in the brew chamber. Ensure that the arrow on the capsule rim aligns with the arrow on the brewing chamber. Gently push the Capsule Holder until it snaps into place.
9. Store the HomeBarista® XL Reusable Filter Cup in the storage compartment if pods are being used.

## COLD BREW WITH THE HOMEBARISTA® XL REUSABLE FILTER CUP

The Cold Brew feature, when using the HomeBarista® XL, slows down the brewing process to maximize coffee flavor and strength. The heater is turned off during brewing to brew with water at ambient temperature. Your cold brew can be brewed directly over ice for a quick and easy refreshing cold coffee!

**Note:** When using the Cold Brew feature, the brew time is slower than brewing hot coffee or Over Ice with pods.

1. Remove the water reservoir, fill it to the desired level with water, and replace it on the unit.



2. Fill a glass with ice and place it on the drip tray.



3. Follow steps 3–5 in Brewing with the HomeBarista® XL Reusable Filter Cup.

See chart below for recommended grounds per brew size for Cold Brew. Adjust the amount to your personal preference.

BREW SIZE	SCOOPS
8 oz.	3
10 oz.	3½
12 oz.	4¼
16 oz.	4¾

4. Press the Grounds button (scoop), Cold Brew/Over Ice (Snowflake) button and your desired brew size, then the Brew/Cancel button to begin brewing. The chosen selections will illuminate and the Brew/Cancel button will be breathing to indicate brewing is in process.



**Note:** To cancel brewing, simply press the Brew/Cancel button again.

5. Once fully dispensed, the unit beeps once and the panel returns to standby mode. Raise the brewing chamber handle and remove the HomeBarista® XL Reusable Filter Cup.
6. Empty and clean the HomeBarista® XL Reusable Filter Cup to brew again or if a pod needs to be used, then replace the Pod Capsule Holder in the brewing chamber. Ensure that the arrow on the capsule rim aligns with the arrow on the brewing chamber. Gently push the capsule holder until it snaps into place.
7. Store the HomeBarista® Reusable Filter Cup in the storage compartment.

## BREWING WITH PODS

When using the coffee maker for the first time, follow instructions in “Setting Up Your Brewer,” page 7.

1. Remove the water reservoir, fill it to the desired level with water, and replace it on the unit.



2. Place a mug on the drip tray.

**Note:** Adjust positioning of the mug depending on its size. The two-position drip tray can be moved up to accommodate shorter cups, and the drip

tray can be removed to accommodate most travel mugs.

3. Select a pod.

**Note:** Do not remove the foil lid or puncture the pod.

4. Open the brew head lid; the indicators will flash, signaling the lid is open. Place the pod into the Capsule Holder in the brewing chamber and press it down in place.

**Caution:** There are two sharp needles in the brewing chamber that puncture the pod, one above and one below. To avoid risk of injury, do not put your fingers in the capsule brewing chamber.



5. Close the brew head. All indicators will illuminate including the 16 ounces.
6. Press your desired brew size, then the Brew/Cancel button to begin brewing. The chosen selections will illuminate and the Brew/Cancel button will flash slowly to indicate brewing is in process.



**Note:** To cancel brewing, simply press the Brew/Cancel button again.

**Caution:** There is very hot water in the capsule chamber during the brewing process. To avoid risk of injury, do not lift the handle or open the brewing chamber during the brewing process.

7. Once the beverage is fully dispensed, the chosen selections will remain illuminated until brew head lid is opened to remove the pod. Raise the handle and dispose of the pod, then close the brew head lid.

**Caution:** Pod will be hot.

8. Enjoy your cup of coffee! Your brewer is ready to use again.

## OVER ICE WITH PODS

The Over Ice feature adjusts the brew process to maximize coffee flavor; ideal for making iced coffee. Either brew coffee directly over ice or add ice to coffee after it is brewed.

**Brew sizes in over ice are approximately half the size of hot brew sizes to accommodate for ice melting when brewed over ice.**



1. Remove the water reservoir, fill it to the desired level with water, and replace it on the unit.
2. Fill a glass with ice and place it on the drip tray.

**Note:** Adjust amount of ice based on personal preference. Adding too much ice could impact the overall flavor of the coffee.

3. Follow steps 3–4 in Brewing with Pods.



4. Press your desired brew size, the Cold Brew/Over Ice button, reference Snowflake and the Brew/Cancel button to begin

Brewing. The selections chosen will illuminate, and the Brew/Cancel button will breathe to indicate brewing is in process.



**Note:** To cancel brewing, simply press the Brew/Cancel button again.

5. Once the beverage is fully dispensed, the unit beeps once and panel returns to standby mode. Raise the handle and dispose of the pod, close the brew head lid. Caution Pod and Capsule Holder will be hot.

## CLEANING AND MAINTENANCE

### Cleaning External Parts

We recommend regular cleaning of the coffee maker's external components.

1. Never immerse the coffee maker in water or other liquids. The housing and other external components may be cleaned with a soapy, damp, nonabrasive cloth.
2. To remove the drip tray, simply lift it, keeping it level at all times in order to prevent spills. Hand-wash the drip tray in warm, soapy water. Only drip tray plate is top-rack dishwasher safe. Do not clean the drip tray with cleansers, steel wool pads, or other abrasive materials.

### Cleaning the Pod Holder

**Caution:** There are sharp needles that puncture the pod above and below. To avoid risk of injury, do not put your fingers in the capsule brewing chamber.

1. The capsule holder is top-shelf dishwasher safe (use a low-temperature cycle). To remove, lift the handle to open the brewing chamber. Grasp the top of the capsule holder and pull up.

## 2. Cleaning the funnel

To remove the funnel from the capsule holder, grip the funnel with your left hand, twist the bottom towards you slightly, and pull away from the capsule holder to remove. The funnel is top-rack dishwasher safe.

**Note:** The funnel may be tight the first few times you remove it; this is normal and will loosen with continued use.

## 3. Cleaning the exit needle

The exit needle is located on the inside bottom of the capsule holder assembly. Should a clog arise because of coffee grounds, it can be cleared using a paper clip or similar tool. Remove the capsule holder from the unit, then remove the funnel from the capsule holder and insert the paper clip into the exit needle to loosen the clog and push it out.



Replace the funnel onto the capsule holder by lining up the tabs in the funnel with the notches on the capsule holder, and then pull away from you until the funnel locks into place. After cleaning, replace the capsule holder, being sure to align the arrow on the capsule holder rim with the arrow on the brewing chamber.

## 4. Cleaning the piercing needle

The piercing needle is located on the inside of the brewing chamber. Should a clog arise because of coffee grounds, it can be cleared using a paper clip or similar tool. Insert the paper clip to loosen the clog and push it out.

## Cleaning The Homebarista® XL

### Reusable Filter Cup

**Caution:** Please be careful when cleaning out the filter to prevent grounds from going into the cup, then hand-wash both the filter cup and filter, or clean on the top rack of a dishwasher.

## Cleaning the Water Reservoir

It is normal over time for discoloration, spotting, or staining to appear in the water reservoir. Results will vary depending on the mineral content of the water used, but will not affect the operation of the brewer. However, be sure to clean the water reservoir regularly to minimize buildup.

Clean inside the water reservoir with a damp, lint-free cloth as necessary.

## Maintenance

Any other servicing should be performed by an authorized service representative.

## Descaling Your Brewer

Mineral content in water varies from place to place. Depending on the mineral content of the water in your area, calcium deposits or scale may build up in your brewer. Though scale is nontoxic, it can hinder brewer performance. Descaling your brewer will help maintain the heating element and other parts that come in contact with water.

For optimal performance, descale your brewer every 3 to 6 months. It is possible for calcium deposits to build up faster, making it necessary to descale more often. When the Descal indicator illuminates on the control panel, this indicates the need to descale.

### To begin, you will need the following:

- 13 oz. of distilled white vinegar
- 26 oz. of water
- 16 oz. ceramic mug or container (do not use a paper cup)
- Access to a sink

### Step 1: First Vinegar Rinse

- Fill the water reservoir with 13 oz. of white vinegar and 26 oz. of water.
- Place the ceramic mug on the drip tray.
- Lift the brew head handle, but do not add a coffee pod.
- Close the brew head, and press and hold the Snowflake and 8 oz. buttons for 3 seconds to start the cleaning cycle.

- 
- Once diluted vinegar dispenses, discard contents of mug into the sink.
  - Repeat until you have emptied the water reservoir.
  - Discard any remaining diluted vinegar into the sink.

**Step 2: Fresh Water Rinse**

- Repeat Step 1 three times, using fresh water in place of vinegar.
- This will clean the coffee maker plumbing and remove any residual vinegar taste.

# TROUBLESHOOTING

<b>Problem</b>	<b>Solution</b>
<b>Brewer does not have power.</b>	Plug brewer into an independent outlet.
	Make sure the brewer is securely plugged in.
	Plug into a different outlet.
	Reset your home's circuit breaker.
<b>Brewer will not brew.</b>	Turn off and unplug the brewer for 60 seconds or more. When you plug the brewer back in, be sure to open and close the brew head to reset the brew cycle.
	Check to make sure the water reservoir is properly filled. If not, add at least 12 oz. of water. If the Brew/Cancel button is flashing even after adding at least 12 oz. of water to the water reservoir, contact Consumer Service at 1-800-726-0190.
	The piercing needle and/or exit needle may be clogged (see page 12).
	Make sure brew head is fully closed.
<b>Chlorine or mineral taste in coffee.</b>	Consider using bottled water or filtered water.
<b>Brewer doesn't brew a full cup.</b>	Turn off and unplug the brewer for 30 seconds or more. When you plug the brewer back in, be sure to turn the power back on.
	The piercing needle and/or exit needle may be clogged (see page 12).
	Descal the brewer (refer to page 12). If you have repeated the descaling procedure two times and it is still brewing only a partial cup, contact Consumer Service at 1-800-726-0190.
<b>BREW/CANCEL LED indicator flashes quickly 3 times upon turning the unit on.</b>	It is time to descale the brewer (see pages 12–13). Once the descaling procedure has been completed, this alert will go away until the next time the brewer must be descaled.
<b>BREW/CANCEL indicator is flashing.</b>	Make sure water has been added to the reservoir. Open and close the brew head after a pod has been added. The Brew/Cancel LED indicator will remain solid, indicating the unit is ready to brew.
	Make sure the brew head has been opened since the last brew cycle ran. If it has not, open brew head, discard old pod, insert new pod into the chamber, and close. Brew/Cancel LED indicator will remain solid, and the brew cycle is ready to be activated.

---

# Limited Warranty

Subject to the exclusions and limitations contained herein, Conair LLC dba Cuisinart ("Cuisinart") warrants that the Cuisinart® Single-Cup Hot & Cold Brew Coffee Maker ("Product") will be free from material defects in materials and workmanship under normal, home-use conditions conditions for a period of THREE (3) years beginning on the date the Product was purchased in its original, sealed packaging, unless otherwise specified in this Limited Warranty. This Limited Warranty is only for U.S. consumers (defined herein as purchasers at retail for personal, family, or household use) who originally purchase the Product from Cuisinart or an authorized Cuisinart® reseller (if you are unsure whether a retailer or other point of sale is an authorized or unauthorized Cuisinart reseller, contact Cuisinart).

## This Limited Warranty does NOT cover:

- Normal wear and tear;
- Any Product purchased by commercial purchasers or for commercial or nonhousehold uses;
- Accessories, parts, or software added to the Product after the system is shipped from Cuisinart;
- Any costs associated with the replacement or repair of the Product, including labor, installation, or other costs incurred by you without prior Cuisinart approval;
- Damage to the Product, defective conditions, or nonconformities due to: (1) external causes, including shipping, accidents, problems with electrical power (Product designed only for use with 120-volt outlets), abnormal conditions (such as mechanical or environmental); (2) usage not in accordance with Product instructions; (3) misuse, neglect, unauthorized alteration, unauthorized repair; and (4) acts of God or other events beyond Cuisinart's control;
- Damage caused by you or any nonauthorized third party, even though necessary repairs and maintenance might be performed by any company;
- Damage caused by accessories or replacement parts not specifically authorized by Cuisinart may void this Limited Warranty; and
- Any Product where the original Product identification markings (trademark or serial number) have been removed, altered, or obliterated from the Product.

It is recommended that you visit our website, <https://www.cuisinart.com/register-your-product.html>, for a fast, efficient way to complete your product

registration. However, product registration does not eliminate the need for the consumer to maintain the original proof of purchase in order to obtain the warranty benefits. In the event that you do not have proof of purchase date, the purchase date for purposes of this Limited Warranty will be the date of manufacture.

## Hassle-free warranty

If the Product that is the subject of this Limited Warranty fails during the warranty period for reasons covered by this Limited Warranty, Cuisinart will, at its option, repair the Product, replace the Product with another identical or reasonably equivalent product, or if Cuisinart is unable to repair or replace the Product, refund the purchase price, less the amount directly attributable to the consumer's prior usage of the Product. To obtain a return shipping label, email us at <https://www.cuisinart.com/customer-care/product-assistance/product-inquiry/>, or call our Consumer Service Center toll-free at **1-800-726-0190** to speak with a representative.

Upon receipt of the Product, Cuisinart will inspect the Product and, if required under this Limited Warranty, attempt to repair, replace, or refund the Product within thirty (30) days. However, there may be delays beyond Cuisinart's control, in which case that time period may be extended as reasonably necessary.

**IMPORTANT:** If the nonconforming Product is to be serviced by someone other than Cuisinart's Authorized Service Center, please remind the servicer to call our Consumer Service Center at **1-800-726-0190** to ensure that the problem is properly diagnosed, the Product is serviced with the correct parts, and the product is still under warranty.

## California residents only

The THREE (3) year Limited Warranty period begins on the date the Product was delivered, which may be different than the date the Product was purchased. California residents also have the option of obtaining the benefits of this Limited Warranty by bringing the Product to (A) the store where it was purchased or (B) another retail store that sells Cuisinart products of the same type. The retail store shall then, according to its preference, either repair the Product, refer the consumer to an independent repair facility, replace the Product with another identical or reasonably equivalent product, or refund the purchase price less the amount directly attributable to the consumer's prior usage of the Product. California residents may also, according to their preference, return nonconforming products directly to Cuisinart for repair or, if necessary, replacement with another identical or reasonably equivalent product by calling our Consumer Service Center toll-free at **1-800-726-0190**. Cuisinart will be responsible for the cost of such repair, replacement,

---

and/or shipping and handling for such nonconforming products under warranty.

**THIS LIMITED WARRANTY GIVES YOU SPECIFIC LEGAL RIGHTS, AND YOU MAY ALSO HAVE OTHER RIGHTS THAT VARY FROM STATE TO STATE OR BY JURISDICTION. IN THE EVENT THIS LIMITED WARRANTY IS BREACHED, YOU MAY HAVE CLAIMS FOR REPLACEMENT, DAMAGES, OR OTHER PENALTIES.**

**LIMITATIONS OF LIABILITY/ADDITIONAL LIMITATIONS AND EXCLUSIONS**

ALL EXPRESS AND IMPLIED WARRANTIES ARE LIMITED IN DURATION TO THE LIMITED WARRANTY PERIOD. NO WARRANTIES APPLY AFTER THAT PERIOD. SOME STATES (OR JURISDICTIONS) DO NOT ALLOW LIMITATIONS ON HOW LONG AN IMPLIED WARRANTY LASTS, SO THIS LIMITATION MAY NOT APPLY TO YOU. CUISINART'S RESPONSIBILITY UNDER THIS OR ANY OTHER WARRANTY, IMPLIED OR EXPRESS, IS LIMITED TO REPAIR, REPLACEMENT, OR REFUND, AS SET FORTH ABOVE. THESE REMEDIES ARE THE SOLE AND EXCLUSIVE REMEDIES FOR ANY BREACH OF WARRANTY. TO THE MAXIMUM EXTENT PERMITTED BY LAW, CUISINART IS NOT RESPONSIBLE FOR ANY DIRECT, INDIRECT, SPECIAL, INCIDENTAL, OR CONSEQUENTIAL DAMAGES RESULTING FROM ANY BREACH OF WARRANTY OR UNDER ANY OTHER LEGAL THEORY (INCLUDING, BUT NOT LIMITED TO, LOST PROFITS, DOWNTIME, LOSS OF GOODWILL, DAMAGE TO OR REPLACEMENT OF EQUIPMENT AND PROPERTY, AND ANY COSTS OF RECOVERING, REPROGRAMMING, OR REPRODUCING ANY PROGRAM OR DATA STORED IN OR USED WITH A SYSTEM CONTAINING THE PRODUCT), EVEN IF CUISINART HAS BEEN ADVISED OF THE POSSIBILITY OF SUCH DAMAGES. SOME STATES DO NOT ALLOW THE EXCLUSION OR LIMITATION OF INCIDENTAL OR CONSEQUENTIAL DAMAGES, SO THE ABOVE LIMITATIONS OR EXCLUSIONS MAY NOT APPLY TO YOU. ALL EXPRESS AND IMPLIED WARRANTIES ARE LIMITED IN DURATION TO THE LIMITED WARRANTY PERIOD. NO WARRANTIES APPLY AFTER THAT PERIOD. SOME STATES (OR JURISDICTIONS) DO NOT ALLOW LIMITATIONS ON HOW LONG AN IMPLIED WARRANTY LASTS, SO THIS LIMITATION MAY NOT APPLY TO YOU.

This Limited Warranty is issued by:

Conair LLC  
1 Cummings Point Road  
Stamford, CT 06902  
1-800-726-0190







©2025 Cuisinart, a division of Conair LLC  
7475 North Glen Harbor Boulevard  
Glendale, AZ 85307

Printed in China

25CE201160

IB-19084