



SIMPL

Touchscreen Countertop Water Dispenser with Refillable 2.7-Liter Water Tank



Setup Manual

Model No.: CLCTPOUW3UVF1

Table of Contents

Safety Information	3
Product Features	4
Touchscreen Description	5
Operational Specifications	6
Technical Specifications	6
Installation	6
Determine Installation Location	6
Fill Raw Water Tank and Turn On Dispenser	6
Flush the Filter	7
Fill the Internal Cold Water Tank	7
Operation	7
Water Cooling Function	7
Replace the Filter	8
Filter Replacement Schedule	8
Troubleshooting	9
Error Codes	9
High-Temperature Protection Mode	10
Care and Maintenance	10
Drain the Internal Cold Water Tank	10
Warranty	11

Safety Information

WARNING: To reduce risk of injury and property damage, you must read this entire guide before assembling, installing and operating the dispenser.

WARNING: This product dispenses water at very high temperatures. Failure to use properly can cause personal injury. When operating this dispenser, always exercise basic safety precautions, including the following:

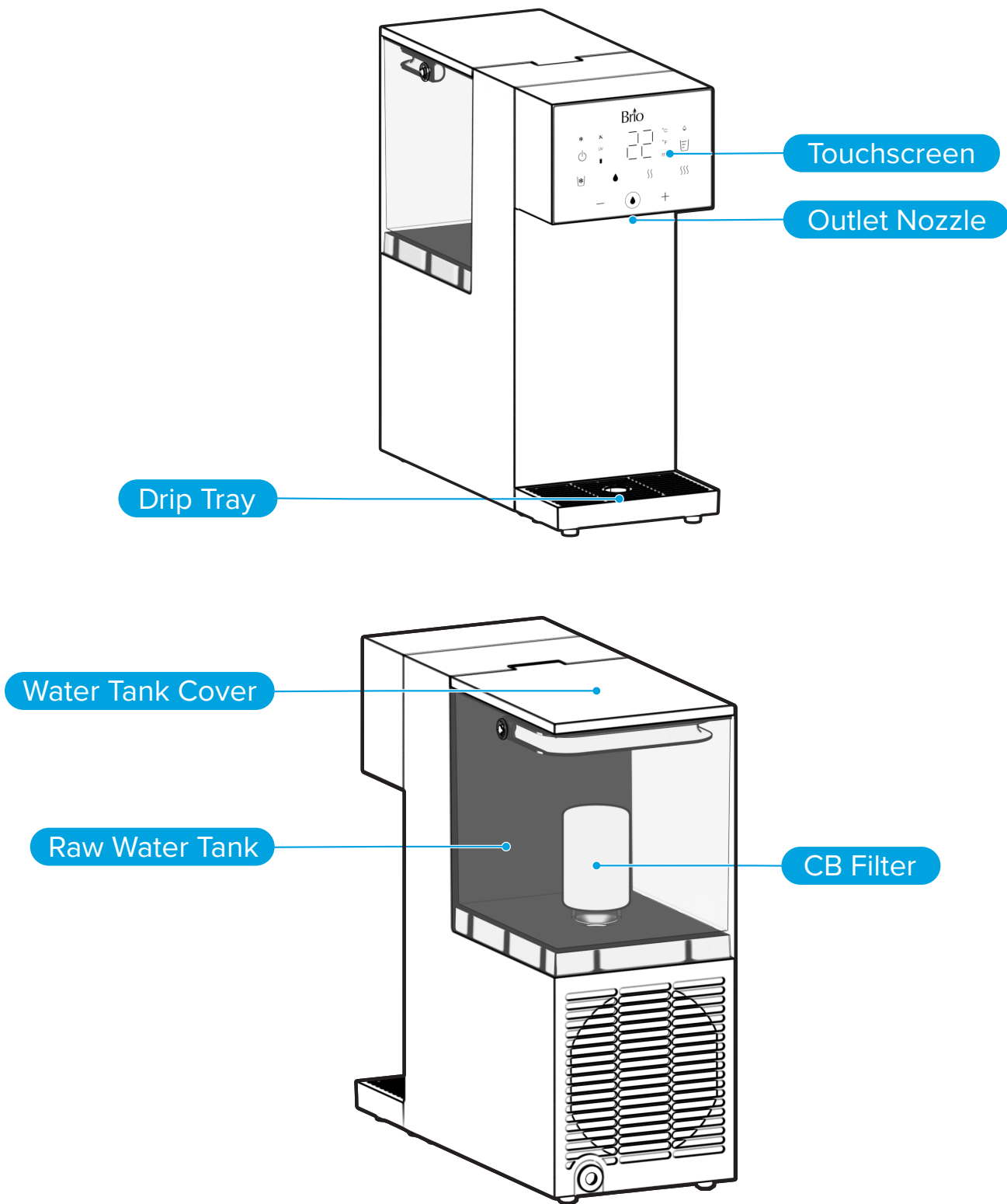
- ALWAYS empty the water tank completely before moving the dispenser.
- The dispenser must be installed so that the drip tray is fully supported by the counter and does not extend off it.
- Do NOT place ice or liquids such as milk or juice in raw water tank.
- Do NOT immerse outlet nozzle in container liquid when dispensing water so as to avoid danger of blockage of the outlet nozzle by boiling water.
- This water purifier is intended for use by children 8 years and above, persons with reduced physical, sensory or mental capacity or lack of experience and knowledge, provided that they are supervised or instructed on the safe use of the machine and are aware of the risks involved. Children must not perform cleaning and maintenance without supervision.
- If the power cord is damaged, it must be replaced by the manufacturer, service agent, or relevant professional to avoid danger.
- When the raw water does not meet the municipal tap water standard (high sediment content in water and TDS exceeding the standard), the service life of the filter element will be reduced.
- Install and use on a hard, flat, and level surface with less than a 10-degree incline.
- The machine is fully inspected before shipment from the factor, so some residual water left inside the machine is normal.

WARNING: WARNING: UV light source. Disconnect the electrical supply to the UV radiation BEFORE opening cover.


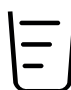




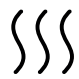
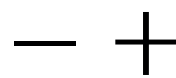


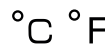




- UV-LED lamp must be repaired by manufacturer only.
- UV-LED lamp model no. YT-SUN56, rated DC 12/24V.
- Disposal of the UV-LED lamp must be done in accordance with local laws and regulations.

WARNING: Designed for use with 120V AC power only. DO NOT use with 220V outlet.

Product Features



Touchscreen Description

Indicator/Button	Description	Function/Operation
	Power button	Press and hold for 2 seconds to turn on machine. Press and hold for 2 seconds to turn off machine.
	Size selection button	The default serving size is 500 mL (16.9 oz.). To select a different size, repeatedly press button to scroll through serving size choices: 150 mL (5 oz.), 250 mL (8.5 oz.), 500 mL (16.9 oz.), 999 mL (33.8 oz.). After choice is made, machine will remember serving size for next dispense.
	Dispense button	Press to initiate dispensing. Press again to stop dispensing. Also, use this button to dispense room temperature water. NOTE: When dispensing hot water, the dispense button illuminates in red. When dispensing cold water, the dispense button illuminates in blue.
	Cold water button	Press button to select cold water. The water temperature will be displayed in the display screen. Press dispense button to dispense cold water. NOTE: If cold water is not going to be used/dispensed, the cold water function can be turned off to save energy. To do this, press and hold the cold water button for 5 seconds. To turn the cold water function back on, press and hold the cold water button for 5 seconds.
	113°F Temperature selection button	Press to select 113°F (45°C) water. Press dispense button to dispense water. You can use the – / + buttons to adjust the default temperature with the range of 104°F (40°C) to 122°F (50°C).
	185°F Temperature selection button	Press to select 185°F (85°C) water. Press dispense button to dispense water. You can use the – / + buttons to adjust the default temperature within the range of 167°F (75°C) to 194°F (90°C).
	203°F Temperature selection button	Press to select 203°F (95°C) water. Press dispense button to dispense water. You can use the – / + buttons to adjust the default temperature within the range of 176°F (80°C) to 203°F (95°C).
	Water temperature adjustment buttons	In the hot water temperature selection modes, the temperature selection can be adjusted within a certain range with the +/- buttons. NOTE: Cold and room temperature water selections are not adjustable.
	Water shortage indicator	When illuminated in red, it indicates a shortage of water. Once raw water tank is refilled, the indicator light will go out.
	Filter life indicator	Indicates the life of the filter element. When filter element is at 10%, the filter life indicator light will illuminate in white and flash. When the filter element has expired, the filter life indicator light will illuminate in red.
	Temperature unit indicator	Illuminates when value of water temperature you are dispensing is displayed.
	Water yield indicator	Illuminates when the volume (size) of water you've selected is displayed while dispensing.
	Fault indicator	Illuminates in red when the machine malfunctions. An error code will appear in the display screen.
	UV indicator	Illuminates when self-cleaning UV is on. Water can be dispensed at this time.
	Cooling indicator	Illuminates in white while water is cooling. It takes approximately 30 minutes for water to fully chill. When water temperature reaches 46.4°F (8°C) or lower, the light changes to blue.

Operational Specifications

You must use the dispenser within the following operational parameters to ensure safe, optimal performance.

Model No.	CLCTPOUW3UVF1
Rated Voltage / Frequency	110 V / 60 Hz
Rated Power	1600W
Rated Heating Power	1500W
Rated Cooling Power	90–120W
Operating Source Water	Municipal water with TDS ≤500 ppm
Operating Source Water Temperature	41–100.4 °F (5–38 °C)

Technical Specifications

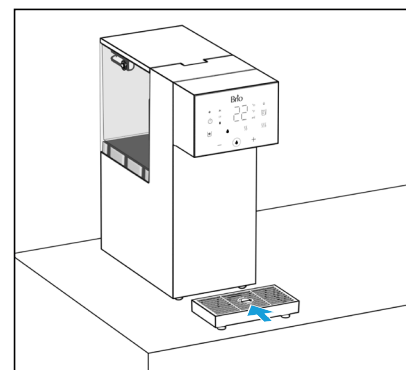
CAUTION: This unit dispenses water at temperatures that can cause severe burns. Avoid direct contact with hot water. Keep children and pets away from unit while dispensing. Never allow children to dispense hot water without proper and direct supervision. Unplug unit to prevent unsupervised use by children.

Model No.	CLCTPOUW3UVF1
Raw Water Tank Volume	2.7 L
Water Cooling Capacity	1.2 L/h (≤50°F / 10°C)
Hot Water Capacity	18 L/h (≥194°F / 90°C)
Room Temperature Water Flow Rate	700 mL/min
Cold Water Flow Rate	700 mL/min
Hot Water Flow Rate	300 mL/min
Net Weight	8.81 lb. (4.0 kg)
Product Dimensions (WxHxD)	5.9 x 14 x 12.55 in. (15 x 35.5 x 31.9 cm)
Dispense Point to Drip Tray (H)	9.0 in. (22.86 cm)

Installation

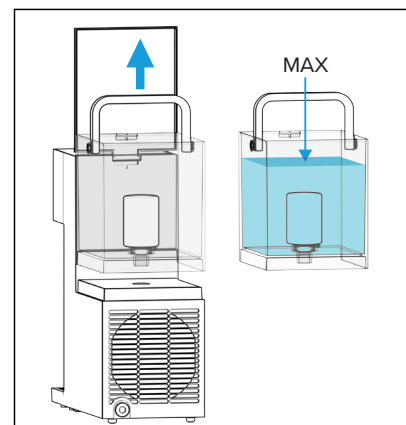
Determine Installation Location

1. Locate the dispenser on a hard, level surface that is out of direct sunlight and near a grounded outlet. Position back of dispenser at least 4 in. (10 cm) from wall to permit free airflow between wall and dispenser.
2. Attach drip tray to dispenser. Ensure the drip tray sits fully and securely on the counter and does not extend off it.



Fill Raw Water Tank and Turn On Dispenser

1. Lift water tank cover. Grasp the water tank handle and lift the water tank straight up to remove.
2. Fill the raw water tank to just below handle with tap water.
3. Reinstall the water tank, then secure the cover on top.
4. Plug power cord into dispenser, then plug dispenser into working outlet. Press and hold Power button for 2 seconds to turn on the dispenser.



Flush the Filter

Before first use of dispenser and after filter replacement, the filter must be flushed. To do so, follow these steps:

1. Place a large container under the outlet nozzle.
2. Simultaneously press and hold the “+” and “–” buttons for 5 seconds. The dispenser enters filter flushing mode. Flushed water will dispense into the container. This process will last approximately 300 seconds (5 minutes). A countdown will appear on the display screen. Replenish water in tank if necessary. If water is not replenished, flushing mode will pause until tank is refilled.
3. Once flush process ends, dispose of flushed water.
4. Refill the raw water tank, then reinstall.

Fill the Internal Cold Water Tank

Upon first use of dispenser and after draining cold water tank, the internal cold water tank has no water. To use dispenser, the internal cold water tank needs to be filled. To do so, follow these steps:

1. Fill the raw water tank with water. Plug in and power on dispenser.
2. Place a container under the outlet nozzle. Press the cold water temperature button, then press the dispense water button. Some water will dispense, then the raw water tank will begin filling the internal cold water tank. This process will be accompanied by a humming sound, which is normal.
NOTE: At this time, no water can be dispensed.
3. After approximately 1 minute, the dispense nozzle will discharge some water. Press any button to stop the water from discharging.

The internal cold water tank is now full and water will begin chilling. Dispenser can be used.

Operation

To dispense water, follow these steps:

1. Select your serving size by repeatedly pressing the serving size selection button to scroll to your desired serving size. The choices are: 150 mL (5 oz.), 250 mL (8.5 oz.), 500 mL (16.9 oz.), and 999 mL (33.8 oz.).

NOTE: The greatest amount of water that can be dispensed at one time is 999 mL (33.8 oz.). The flow will automatically stop once that amount is reached.

2. Select your desired water temperature: cold, room, 113°F, or 203°F. If desired, adjust selected hot water temperature using –/+ buttons.
3. Place a cup or container under the spout, then press the dispense button.
4. Dispenser will dispense the serving size selected.

NOTE: You can stop the dispense flow at any time by pressing the dispense button again.

IMPORTANT: If a jet of air comes out when dispensing hot water, immediately press the dispense button to stop dispensing. Check whether the filter has reached end of service life and replace if necessary.

Water Cooling Function

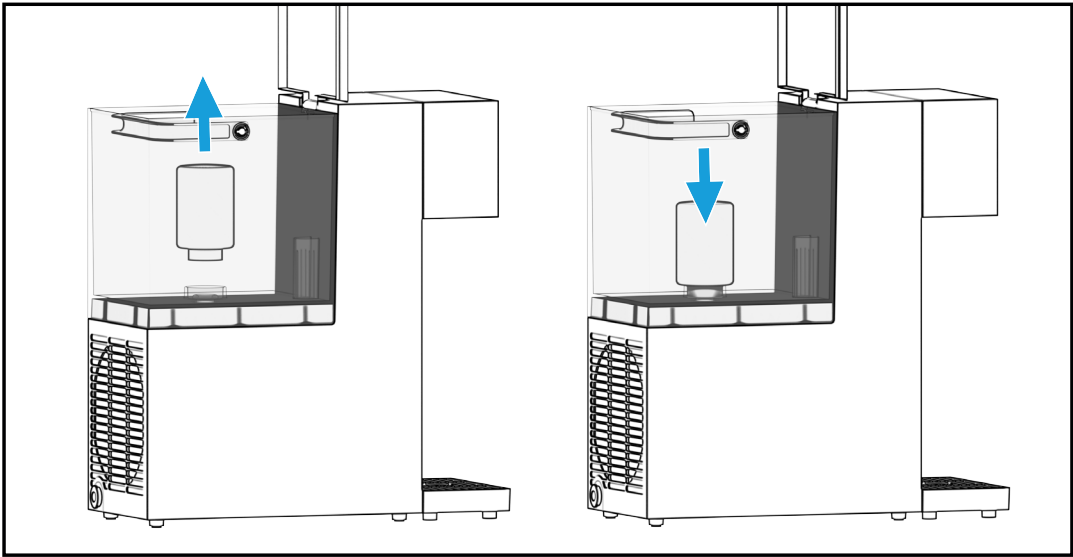
The water cooling function is on by default to chill water. To turn it off because cold water is not desired or to save energy, press and hold the cold water temperature button for 5 seconds. Water cooling is now off.

To turn the water cooling function back on, press and hold the cold water temperature button for 5 seconds. Water cooling is now back on.

Replace the Filter

When Filter reset button illuminates in red, the filter element has expired and needs to be replaced. To do so, follow these steps:

- 1. Press and hold the Power button for 2 seconds to turn off the dispenser, then unplug.
- 2. Remove raw water tank from dispenser and discard any remaining water.
- 3. To remove expired filter at bottom of raw water tank, grasp filter and pull straight up and out. Discard responsibly.
- 4. To install new filter, insert straight into filter port at the bottom of the raw water tank. Press down and tighten.
- 5. Refill raw water tank and reinstall onto back of dispenser.
- 6. Follow the instructions under “Flush the Filter” to flush new filter.



Filter Replacement Schedule

The filter lifetime capacity listed below is for typical dispenser usage and municipal source water quality with TDS ≤500 ppm.

Filter Name	Filter Type	Model No.	Capacity	Function
CB	2-in-1 Composite Filter Element	RFCLCTPOUW3UVF1	2 Months or 53 Gallons	Adsorbs colors and odors, while infusing water with beneficial minerals to improve taste of filtered water.

Troubleshooting

Problem	Solution
The machine does not produce water.	<ul style="list-style-type: none"> • Ensure the raw water tank has water. • Filter may be clogged or has expired. Change filter.
Water flow is smaller.	<ul style="list-style-type: none"> • Filter may be clogged or has expired. Change filter.
Water does not taste good.	<ul style="list-style-type: none"> • Filter may be clogged or has expired. Change filter.
Water seepage at screw joint.	<ul style="list-style-type: none"> • Check whether parts on the dispenser have been dismantled without authorization. • Ensure parts at seepage point are securely screwed in. • Check whether the silicone seal ring at the seepage joint is aged or damaged.
There is electrical leakage and induced electricity of the dispenser body.	<ul style="list-style-type: none"> • The dispenser is poorly grounded. Ensure dispenser is connected to a properly grounded outlet.
Hot water doesn't heat.	<ul style="list-style-type: none"> • Ensure dispenser is connected to a working power supply. • The temperature-controlled protector on the heating barrel is not reset. Contact a certified repair technician for assistance.
Cold water doesn't chill.	<ul style="list-style-type: none"> • Ensure dispenser is connected to a working power supply. • Ensure cooling function is on. If it isn't, press and hold cold water button for 5 seconds to turn on.

Error Codes

When an error code appears in the display, make note of it, power down the dispenser, then consult the table below.

Code	Reason	Solution
E2	Inlet water temperature NTC open circuit.	Plug in terminal or replace heating parts.
E3	Outlet water temperature NTC open circuit.	Plug in terminal or replace heating parts.
E4	Inlet water temperature has been detected below 32°F (0°C).	Use water that is above 41°F (5°C).
E5	Display communication failure.	Restart by powering off then powering on.
E6	Hardware heating circuit board fault has been detected.	Restart by powering off then powering on.
E7	High temperature detected in heating parts.	Machine will return to normal after heating-part temperature goes down.
E8	Water inlet NTC short circuit.	Contact a certified repair technician for assistance.
E10/E21	Open circuit fault of water suction pump.	Contact a certified repair technician for assistance.
E14	Water outlet NTC short circuit.	Contact a certified repair technician for assistance.
E15/E16	High/low supply voltage fault.	Troubleshoot supply voltage before using dispenser.
E17	Shortage of water in raw water tank.	Refill raw water tank.
E18	Overly long continuous heating. Internal temperature is too high, triggering high temperature protection.	Wait 10 minutes before powering dispenser back on.
E19	Cold water temperature NTC open circuit.	Plug in terminal or replace cooling parts.
E20	Cold water temperature NTC short circuit.	Contact a certified repair technician for assistance.

High-Temperature Protection Mode

If hot water has been continuously dispensed for a long time, the dispenser will enter high-temperature protection mode. All hot water temperature selection buttons will slowly flash, and the dispenser will not produce hot water.

NOTE: High-temperature protection mode does not affect the dispensing of room temperature or cold water.

After approximately 20 minutes, the dispenser will automatically exit high-temperature protection mode and return to normal mode. Hot water can be dispensed again.

Care and Maintenance

IMPORTANT: Always unplug dispenser before undertaking any cleaning or maintenance.

- Remove side water tank and clean as needed. Follow the instructions of a purchased food-grade citric acid cleaner to remove any scale buildup.
- Do not immerse the dispenser in water or any other liquid for cleaning.
- Use a clean, damp cloth to wipe off dispenser.
- Always replace filter element in timely manner according to Filter reset indicator prompts.

Drain the Internal Cold Water Tank

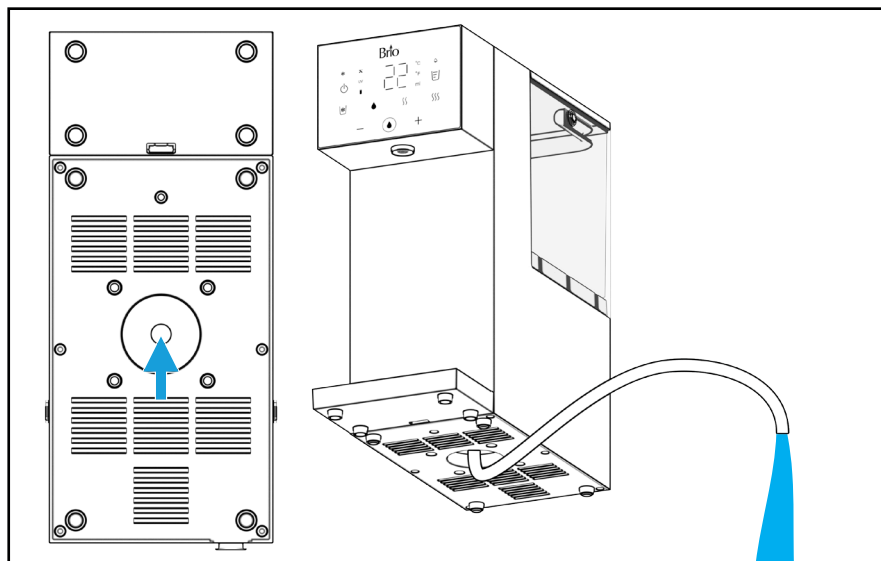
If the dispenser will not be used for an extended period of time or needs to be moved to a new location, the water must be drained from the cold water tank. You will need a bucket or other container to collect drain water. To drain tank, follow the steps below:

1. Remove the silicone plug from the cold water tank located at the bottom center of the dispenser.
2. Insert the tube included with the dispenser into the drainage hole to a depth of 0.75 to 1.25 in. (2 to 3 cm). Allow water in tank to drain into container or bucket. The draining process takes approximately 5 to 10 minutes.

NOTE: If tube has been misplaced, a straw can be used instead.

3. After there is no more water flow from the dispenser, remove the tubing. Gently shake the dispenser to drain the residual water inside tank.
4. Reinstall the silicone plug into the drainage hole.

When using the dispenser again, follow the instructions under “Fill the Internal Cold Water Tank” to refill tank.



Warranty

Brio ("Vendor") warrants to the original purchaser of the Brio Water Coolers (the "Product"), and to no other person, that if the Product is assembled and operated in accordance with the printed instructions accompanying it, then for a period of one (1) year from the date of purchase, all parts in the Product shall be free from defects in material and workmanship. This Limited Warranty shall be limited to repair or replacement of parts, which prove defective under normal use and service and which Vendor shall determine in its reasonable discretion upon examination to be defective. To take advantage of this Limited Warranty, please follow these steps:

1. Please retain your sales slip or invoice, as Vendor may require reasonable proof of your date of purchase.
2. Contact Vendor's Customer Service Department using the contact information listed below.
3. Return parts to Vendor, per Vendor's instructions, at your cost and expense.
4. Upon receipt by Vendor, Vendor shall advise you in writing whether a defect covered by this Limited Warranty exists in any returned part and whether your claim has been approved or denied.
5. Upon Vendor's approval of your claim, Vendor will replace such defective part without charge to you.

WHAT THIS LIMITED WARRANTY DOES NOT COVER: This Limited Warranty does not cover any failures or operating difficulties of the Product due to accident, abuse, misuse, alteration, misapplication, improper installation or improper maintenance or service by you or any third party, or failure to perform normal and routine maintenance on the Product, as set out in the User's Manual. In addition, this Limited Warranty does not cover damages to the finish, such as scratches, dents, discoloration or rust after purchase.

This Limited Warranty is the only express warranty given on the Product and is in lieu of all other express warranties. Vendor disclaims all warranties for products that are purchased from seller other than authorized retailers or distributors. THIS LIMITED WARRANTY RESTRICTS THE DURATION OF ANY AND ALL IMPLIED WARRANTIES, INCLUDING WITHOUT LIMITATION, THE IMPLIED WARRANTY OF MERCHANTABILITY AND FITNESS FOR A PARTICULAR PURPOSE TO THE ONE (1) YEAR TERM OF THIS LIMITED WARRANTY. UPON THE EXPIRATION OF THE ONE (1) YEAR TERM OF THIS LIMITED WARRANTY, VENDOR DISCLAIMS ANY AND ALL IMPLIED WARRANTIES, INCLUDING WITHOUT LIMITATION THE IMPLIED WARRANTIES OF MERCHANTABILITY AND FITNESS FOR A PARTICULAR PURPOSE, THE PRODUCT BEING THUS SOLD AS-IS, WITH ALL FAULTS. FURTHER, VENDOR SHALL HAVE NO LIABILITY WHATSOEVER TO PURCHASER OR ANY THIRD PARTY FOR ANY SPECIAL, INDIRECT, PUNITIVE, INCIDENTAL, OR CONSEQUENTIAL DAMAGES. OTHER THAN THIS LIMITED WARRANTY, THERE ARE NO WARRANTIES WHICH EXTEND BEYOND THE DESCRIPTION ON THE FACE HEREOF. Vendor assumes no responsibility for any defects caused by third parties. This Limited Warranty gives you specific legal rights, and you may have other rights which vary from state to state. State law may also override statements in this Limited Warranty regarding the restriction on the duration of implied warranties. Some jurisdictions do not allow exclusion or limitation of special, incidental or consequential damages, or limitations on how long a warranty lasts, so the above exclusion and limitations may not apply to you.



WWW.BRIOWATER.COM

©2025 Brio Water Technology, Inc.