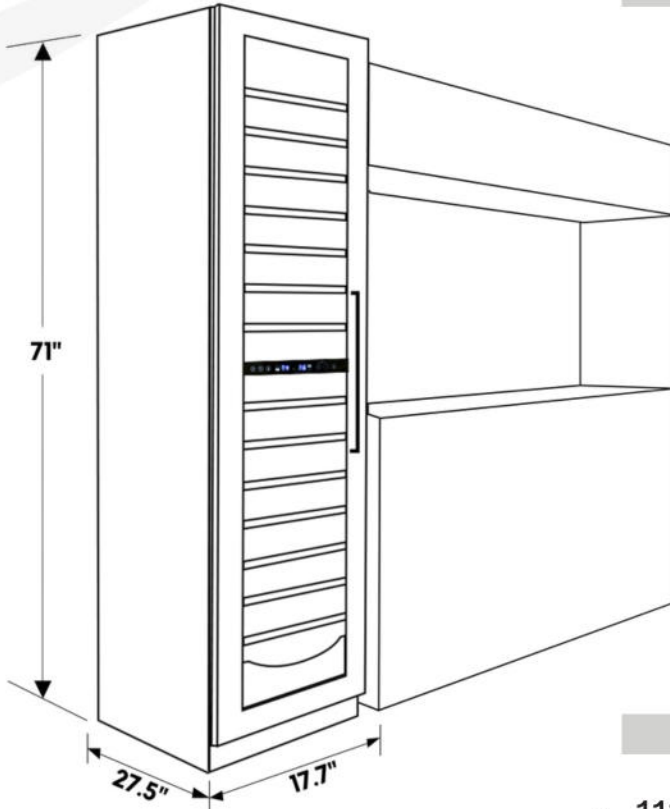




Kenmore Elite 111 Bottle Dual Zone Built-In or Freestanding Wine Cellar

dimensions & weight



product height 71" / 180 cm
product width 17.7" / 44.9 cm
product depth 27.5" / 69.9 cm
(without handle)

depth including handle 29.1" / 73.9 cm

depth with door open 44" / 111.8 cm

product weight 191 lbs / 87 kg

door orientation reversible

product features

- 111 bottle capacity
- Compressor cooled with fans for precise temperature
- Seamless reversible door with hidden hinge
- Two independently controlled temperature zones
- Temperature range: Upper zone 40-56°F (5-12°C) / lower zone 56-68°F (12-20°C)
- Front-exhaust allows for built-in or freestanding use
- Wine view racks allow labels to face forward
- Touch pad temperature control with LED display
- 14 beechwood shelves
- Smooth rolling shelves on ball-bearing tracks
- One solid drawer
- Interior theatre lighting
- Sleek black cabinet with dual pane glass door

