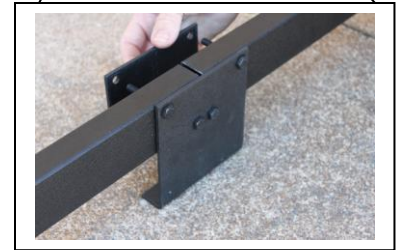


# The Costco 8' Easy Slide Firewood Rack



- Parts:
- 1 Full cover
  - 2 Vertical welded end sections
  - 4 Horizontal tubes
  - 2 Bent Outside Brackets
  - 2 Straight Brackets
  - 8 1 3/4" Bolts
  - 8 Nuts
- Tools needed: (2) 7/16" wrenches

Slide the four straight horizontal tubes down each welded end section, making sure that the hole pattern used for the center supports follows as shown in inset (right). After the horizontal tubes are in place, connect the two sections together by using support brackets, bolts and nuts.



Place rack on a hard, level sturdy surface. Sturdy concrete stepping stones under each leg of support may be used. Never allow children to play on rack.

Cover is suggested for use with seasoned wood. If wood is not seasoned, leave wood exposed to sun and air to promote curing. For tips on wood storage, visit [www.firewoodcenter.com](http://www.firewoodcenter.com)

**WARNINGS: THIS PRODUCT IS DESIGNED FOR HOLDING FIREWOOD ONLY AND SHOULD NOT BE USED FOR ANY OTHER PURPOSE. PRE-ASSEMBLED PARTS MAY HAVE SHARP EDGES AND CARE SHOULD BE TAKEN DURING ASSEMBLY TO PREVENT CUTS. THIS PRODUCT MUST BE PLACED ON A HARD, LEVEL, STABLE SURFACE. NEVER PLACE THIS RACK ON DIRT OR OTHER UNSTABLE SURFACES. THICK CONCRETE STEPPING STONES UNDER EACH POINT OF CONTACT CAN BE USED. THIS PRODUCT IS NOT A TOY. NEVER ALLOW CHILDREN OR ANYONE TO PLAY OR CLIMB ON THIS FIREWOOD RACK.**

For friendly customer support, please call 888-421-5010, 8:00 a.m. to 5:00 p.m. M-F CST