

IMPORTANT SAFETY INSTRUCTIONS

HOUSEHOLD USE ONLY

⚠ WARNING TO REDUCE THE RISK OF FIRE, ELECTRIC SHOCK, OR INJURY:

- DO NOT** operate any unit with a damaged cord or plug. Discard the unit or return to an authorized service facility for examination and/or repair.
- DO NOT** run cord under carpeting. **DO NOT** cover cord with throw rugs, runners, or similar coverings. **DO NOT** route cord under furniture or appliances. Keep cord away from high traffic areas where it will not be tripped over.
- If the power cord is damaged, it must be replaced by the manufacturer, its service agent, or similarly qualified persons in order to avoid a hazard.
- This appliance should only be placed on flat and dry surfaces.
- This appliance is not intended for use by anyone (including children) with reduced physical, sensory or mental capabilities, or lack of experience and knowledge, unless they have been given supervision or instruction concerning use of the appliance by a person responsible for their safety.
- Children should be supervised to ensure that they **DO NOT** play with the appliance.
- Cleaning and user maintenance shall not be made by children without supervision.
- Prior to cleaning or other maintenance, the appliance must be unplugged from the electrical outlet.
- DO NOT** handle plug or appliance with wet hands.
- DO NOT** use without filter in place.
- Only use Shark® branded filters and accessories.
- DO NOT** damage the power cord:
 - DO NOT** pull or carry appliance by the cord or use the cord as a handle.
 - DO NOT** unplug by pulling on cord. Grasp the plug, not the cord.
 - DO NOT** stand the appliance on the power cord, close a door on the cord, pull the cord around sharp corners, or leave the cord near heated surfaces.
- DO NOT** use with any opening blocked; keep free of dust, lint, hair, and anything that may reduce airflow.
- DO NOT** use if airflow is restricted. If the air paths become blocked, turn the appliance off and unplug from electrical outlet. Remove all obstructions before you plug in and turn on the unit again.
- DO NOT** use if appliance is not working as it should, or has been dropped, damaged, left outdoors, or dropped into water.
- DO NOT** place appliance on unstable surfaces such as chairs or tables.
- DO NOT** use in the following areas:
 - Wet or damp surfaces.
 - Outdoor areas.
 - Spaces that are enclosed and may contain explosive or toxic fumes or vapors (lighter fluid, gasoline, kerosene, paint, paint thinners, mothproofing substances, or flammable dust).
- Turn off all controls before plugging in or unplugging the appliance.
- Unplug from electrical outlet when not in use and before any maintenance or cleaning.
- Hand wash exterior/hard plastic/non-electronic parts with water only. **DO NOT** immerse. Cleaning with chemicals could damage the unit.
- Make sure filter is in place after routine maintenance.
- Not suitable for use with solid-state speed controls.

FCC WARNINGS

Note: This equipment has been tested and complies with the limits for a Class B digital device - pursuant to part 15 of the FCC Rules. These limits are designed to provide reasonable protection against harmful interference in a residential installation. This equipment generates, uses, and can radiate radio frequency energy, and if not installed and used in accordance with the instructions, may cause harmful interference to radio communications.

To see if this equipment interferes with radio or television reception, try turning the equipment off and on.

To correct any interference:

- Reorient or relocate the receiving antenna.
- Increase the distance between the equipment and the receiver.
- Connect the equipment to a different outlet than the receiver.
- Consult the dealer or an experienced technician for help.

This device complies with Part 15 of the FCC Rules. Operation is subject to two conditions:

- This device may not cause harmful interference, and
- this device must accept any interference received, including interference that may cause undesired operation.

Caution: Any changes or modifications to this unit not expressly approved by the party responsible for compliance could void the user's authority to operate the equipment.

IC Statement:

This device contains licence-exempt transmitter(s)/receiver(s) that comply with Innovation, Science and Economic Development Canada's licence-exempt RSS(s). Operation is subject to the following two conditions:

- This device may not cause interference.
- This device must accept any interference, including interference that may cause undesired operation of the device.

visit support.sharkninja.com or

SCAN HERE

USING YOUR SMARTPHONE CAMERA



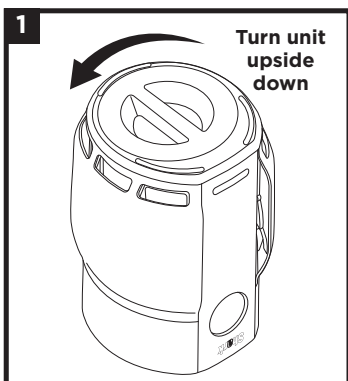
FOR FULL INSTRUCTIONS OR TO PURCHASE ACCESSORIES.

READ AND SAVE THESE INSTRUCTIONS

QUICK START GUIDE

SETTING UP YOUR AIR PURIFIER

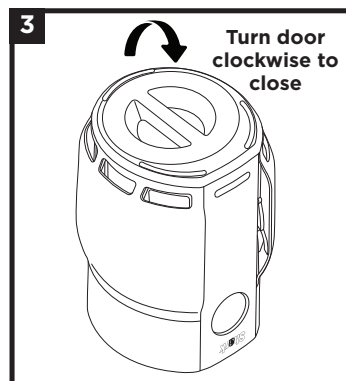
Functions and colors may vary by model.



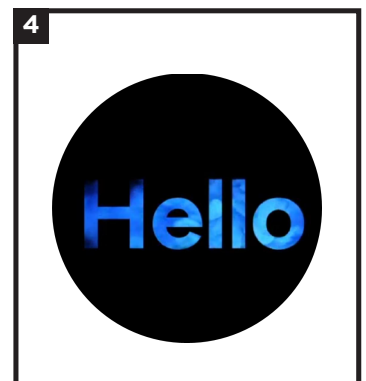
- DO NOT** plug in the air purifier. First, carefully turn the air purifier upside down and place it on a level floor surface. Rotate the filter door counterclockwise to the unlocked position, then lift off the door to access the HEPA filter.



- Take the HEPA filter out of its plastic packaging. Reinstall the HEPA filter in either orientation.



- With the HEPA filter reinstalled, replace the door, then rotate it clockwise until it clicks into place.



- Plug in and press the power button (⏻) on your air purifier. Follow the steps to set up your unit. All information can be adjusted later in the **SETTINGS** ⚙️ menu. The sensor in the unit will take 5 minutes to calibrate when turned on.

BREATHCLEAR SETTINGS AND CONTROLS

Functions and colors may vary by model.



Power
Turn unit on or off.

Settings
Sleep Mode: Set or schedule daily routine for Sleep Mode.
Brightness: Adjust screen brightness.
Device Settings: Adjust date, clock, or other system settings.
More Settings: Toggle through Mute and Motion Sensor features.

My Air IQ
 Press to access data and information about your air purifier and the air in your home. Use navigation buttons to select:
Air Insights: Tracks daily and weekly history of air quality, humidity, and temperature.
Pollutants: Particle matter and VOC details.
Filter Status: Displays remaining filter life.

Speed Control & Navigation

Press up and down arrows to manually change the fan speed, or to navigate through different sections. Press the check mark to confirm settings.

BreatheClear (auto)

Switch to BreatheClear to automatically adjust fan speed based on air quality. Press again for more info about BreatheClear status. Press and hold while in BreatheClear mode to immediately enable Sleep Mode.

To activate or deactivate child lock, press and hold the **SETTINGS** ⚙️ and **MY AIR IQ** 📊 buttons at the same time for 3 seconds.

KEY FEATURES

AIR INSIGHTS

Track daily and weekly air quality, humidity, and temperature in your home.

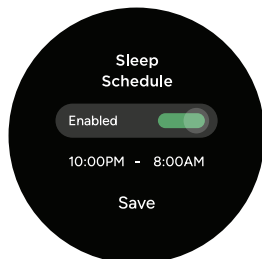


The top of the bar indicates the maximum recorded air quality, and the bottom of the bar indicates the minimum recorded air quality.

Access through My Air IQ 📊

SLEEP MODE

Activate to dim lights and mute sounds for sleeping or other quiet times.

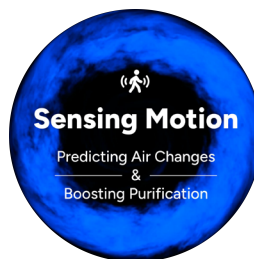


Slows motor speed to low, dims lights, and mutes sounds. Suggested for use when you would prefer a quieter experience.

Access through Settings ⚙️

MOTION DETECT

Boosts purification power when motion has been detected, proactively responding to potential movement of dust & particles.



Your air purifier is always reacting to your air quality and providing you updates when you need it.

Disable or enable in Settings ⚙️

POLLUTANT INFO

- The built-in sensor detects your air quality to give you real-time information. You can see more details about the pollutants in your home by looking at the Pollutants screen under My Air IQ 📊
- Your PM (particulate matter) value is the amount of particulate in your air, measured in micrograms (µg) per cubic meter. Your air purifier measures three particle sizes, PM1, PM2.5, and PM10.
- Your unit is also capable of measuring VOCs (volatile organic compounds). VOCs are gases and odors emitted from common household products such as cleaners, makeup, paint, and carpet.

PM1		Ultra-fine particles, typically from cooking, smoke, and exhaust
PM2.5		Small particles, typically from microplastics, smoke, smog, and cooking
PM10		Larger particles, typically from dust, pollen, and mold spores
VOCs		Organic compounds, typically from gases / odors emitted from cleaners, paint, and upholstery.

BREATHCLEAR

BreatheClear technology automatically adjusts fan speed in response to changes in air quality. When air quality decreases, the fan speed increases. When air quality improves, fan speed decreases.

DARK BLUE: EXCELLENT

Clean Air Level:
100% to 95%



LIGHT BLUE: GOOD

Clean Air Level:
94% to 85%



YELLOW: FAIR

Clean Air Level:
84% to 60%



ORANGE: MODERATE

Clean Air Level:
59% to 30%

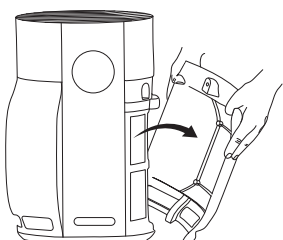


RED: POOR

Clean Air Level:
29% to 0%



MAINTENANCE



CHANGE FILTER ALERT

To clean the mesh pre-filters, pull them out of the sides of the unit and use a vacuum cleaner on low speed OR a cloth/towel to remove debris. Do not use abrasive chemical cleaners, and always allow the screens to air-dry completely for 24 hours before reinstalling.

An alert will appear on the front display when the mesh pre-filters need to be cleaned (approximately every 8 weeks.) You can also view the estimated remaining filter life through the My Air IQ menu. Filter maintenance alerts can be disabled in the Settings. ⓘ

For full instructions on cleaning filters, or to view how-to videos and the online Owner's Guide, visit sharkninja.com/support.